

Devon County Council Historic Environment Record

Civil Parish & District: Axminster, East Devon	National Grid Reference SY 29917 97475	Number: (Leave blank for HES to fill in)
Subject: Land north of Woodbury Lane Axminster EX13 5TL		Photo attached? Y
Planning Application no: 15/1221/OUT	Recipient museum: Royal Albert Memorial Museum	
OASIS ID: contexto1-228617	Museum Accession no: 15/46	
Contractor's reference number/code: C1/EVA/15/WAD	Dates fieldwork undertaken: 13/10/2015	
<p>Description of works.</p> <p>Context One Archaeological Services Ltd (COAS) carried out a programme of archaeological evaluation relating to a development proposal for two residential units at land north of Woodbury Lane, Axminster, Devon (the 'Site') (Figure 1), on 13 October 2015. The project was commissioned by Stone and Partners and funded by Mr D Churchill. The evaluation programme was requested by Mr Stuart Rogers of Stone and Partners on 6 July 2015 following a consultation response from Mr Stephen Reed (Archaeologist, Devon Historic Environment Team (HET)) (ref, ARCH/DM/ED/23233). The work was carried out in compliance with the Devon Historic Environment Team's specification for archaeological field evaluation.</p> <p>The Site is located immediately to the north of a Scheduled Roman fort and Romano-British settlement (HE Ref. 1011921). A gradiometry survey was conducted by Stratascan over the 0.35 ha of the Site during August 2015 (see attached report). No features were noted that may have been of probable archaeological origin, although there were areas of magnetic disturbance including those resulting from the line of a pipe, which would be likely to mask less prominent magnetic anomalies from archaeological sources (Figure 2). Trenches were positioned to examine an area with a potential land drain and a further two areas to examine areas without magnetic disturbance, one in the central part of the Site and one on the northern boundary.</p> <p>The evaluation strategy comprised the excavation of four trenches measuring c. 1.60m wide and variable lengths of 10m (Trench 1), 15m (Trench 2), 5m (Trench 2a) and 20m (Trench 3). These were excavated by a machine equipped with a 0.60m toothless bucket to remove topsoil/ploughsoil and continued until the natural geology was encountered. In the absence of archaeological features and deposits, a representative section was then recorded to define the sequence of deposits using COAS <i>pro forma</i> evaluation trench sheets paper format. A digital photograph was also taken of each section as well as the long axis of each trench. All photographs included an appropriate scale.</p> <p>No archaeological features or finds were encountered during the monitoring programme.</p> <p>In all trenches, the upper part of the stratigraphic sequence consisted of:</p> <p>(001) Brown silty clay topsoil (002) Brown silty clay with frequent sub-angular gravels - subsoil</p> <p>Trench 1 (Plate 1) 0 - 0.20m (101) Brown silty clay topsoil 0.20m - 0.35m (102) Brown silty clay with frequent sub-angular gravels - subsoil 0.35m-0.40m (103) Angular-sub-angular gravels of variable geology in yellowish brown clay - natural</p> <p>Trench 2 (Plate 2) 0 - 0.10m (101) Brown silty clay topsoil 0.10m - 0.25m (102) Brown silty clay with frequent sub-angular gravels - subsoil 0.25m-0.30m (103) Angular-sub-angular gravels of variable geology in yellowish brown clay- natural</p> <p>Trench 2a (Plate 3) 0 - 0.25m (101) Brown silty clay topsoil 0.25m - 0.50m (102) Brown silty clay with frequent sub-angular gravels - subsoil</p>		

0.50m-0.60m (103) Angular-sub-angular gravels of variable geology in yellowish brown clay- natural

Trench 3 (Plate 4)

0 - 0.10m (101) Brown silty clay topsoil

0.10m - 0.40m (102) Brown silty clay with frequent sub-angular gravels - subsoil

0.40m-0.55m (103) Angular-sub-angular gravels of variable geology in yellowish brown clay- natural

Two bands of more compacted brownish yellow clay were noted at the southern end of Trench 3, interpreted as a variation in the natural deposits.

The evaluation trenches confirmed the absence of archaeological remains in the areas without magnetic disturbance and did not encounter the potential land drain identified on the geophysical survey.

A plan as well as any other relevant drawings must be attached showing the location and extent of site, areas investigated and features exposed.

Recorder: Clare Randall

Context One Archaeological Services Ltd.

Date sent to HER:

3/11/2015



Figure 1: Site location and setting showing proposed development area and evaluation trenches

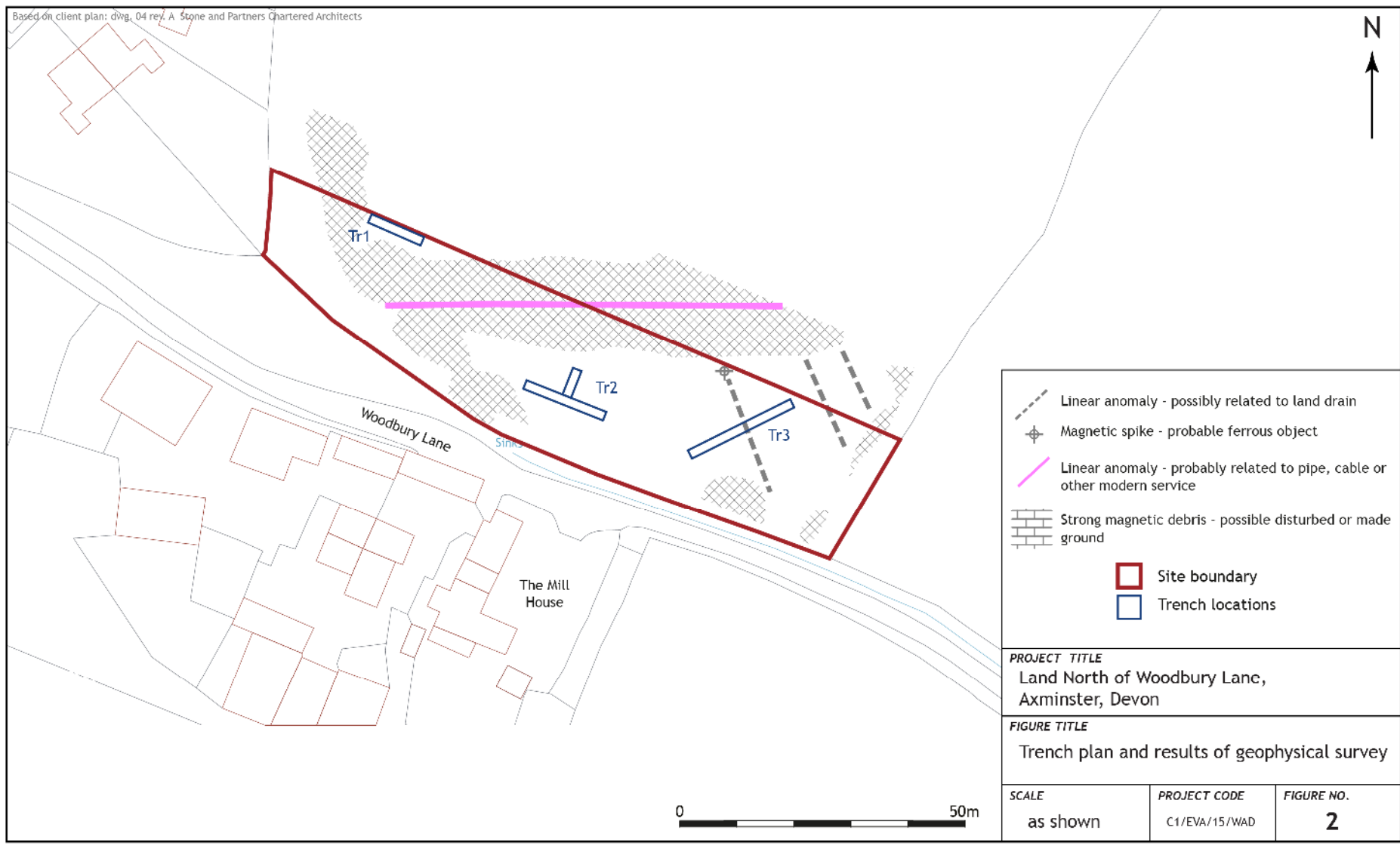


Figure 2: Location of evaluation trenches in relation to magnetic anomalies



Plate 1. Trench 1 profile (from N; 1m scale)



Plate 2. Trench 2 (from NE; 1m scales)



Plate 3. Trench 3 (from N; 1m scales)



Plate 4. Trench 3 profile (from SW; 1m scale)

Please email completed form to: archaeol@devon.gov.uk or post to County Archaeology Service, Environment Directorate, Matford Lane Offices, County Hall, Topsham Road, Exeter EX2 4QW. Information recorded on this form will be added to the Historic Environment Record, and made available to all researchers. Any plans or photographs embedded within or attached to this form remain the copyright © of the recorder, and must not be reproduced in any publication without the explicit consent of the copyright holder.