

Appendix 1. Photographic survey (images not used in main report)



DSC 001. North-east elevation of B1 & B2 (from NE; 2m scales)



DSC 003. South-east facing gable end of B1 (from SE)



DSC 005. North-east elevation of B1 showing southern-most full-height door (from NE; 2m scales)



DSC 006. North-east elevation of B1 showing windows between two full-height doors (from NE; 2m scales)



DSC 007. North-east elevation of B1 showing northern-most full height door (from NE; 2m scales)



DSC 008. North-east elevation of B1 where it adjoins B2 (from NE; 2m scales)



DSC 009. North-east elevation of B2 (from NE; 2m scales)



DSC 0012. North-east elevation of B2 (from NE; 2m scales)



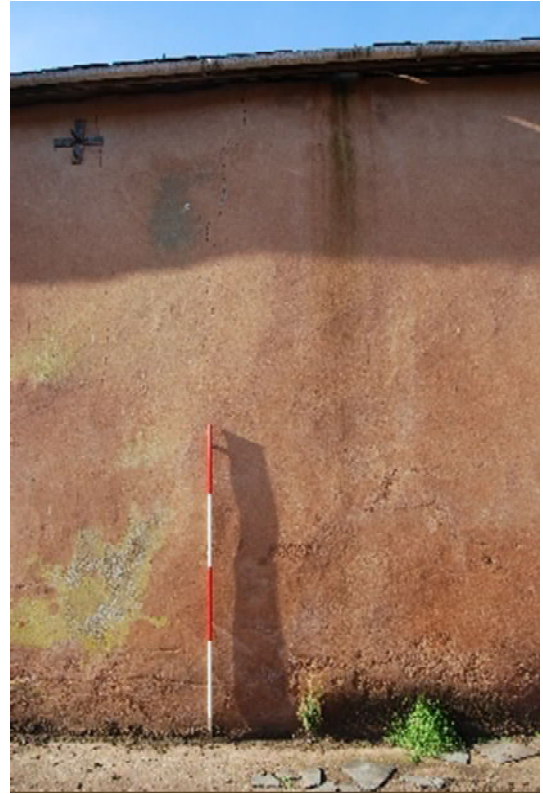
DSC 0013. North-east elevation of B2 (from NE; 2m scales)



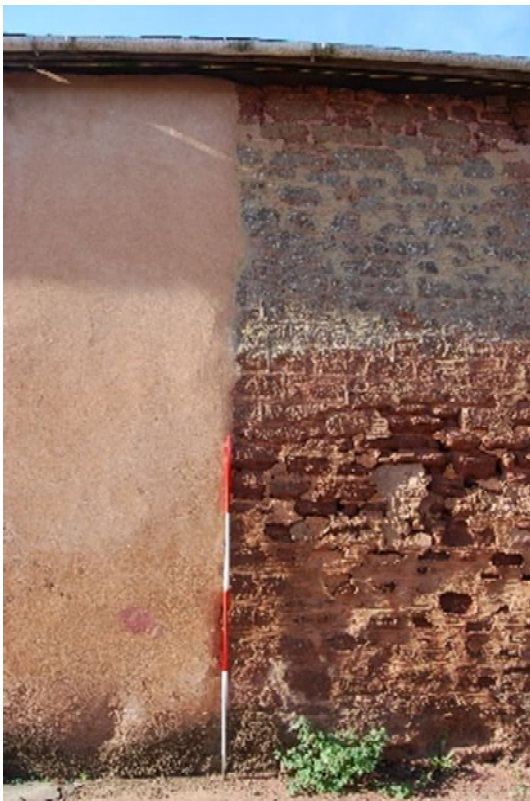
DSC 0014. North-east elevation of B2 (from NE; 2m scales)



DSC 0015. North-east elevation of B2 (from NE; 2m scales)



DSC 0016. North-east elevation of B2 (from NE; 2m scales)



DSC 0017. North-east elevation of B2 (from NE; 2m scales)



DSC 0018. North-east elevation of B2 (from NE; 2m scales)



DSC 0020. South-west elevation of B2 (from SW; 2m scales)



DSC 0024. South-west elevation of B2 at junction between modern blockwork & old fabric (from SW; 2m scales)



DSC 0025. South-west elevation of B2 (from SW; 2m scales)



DSC 0026. South-west elevation of B2 (from SW; 2m scales)



DSC 0027. South-west elevation of B2 (from SW; 2m scales)



DSC 0029. South-west elevation of B2 (from SW; 2m scales)



DSC 0037. South-west elevation of B1 showing southern-most full height door (from SW; 2m scales)



DSC 0042. Interior of main part of B3 (from NE; 2m scales)



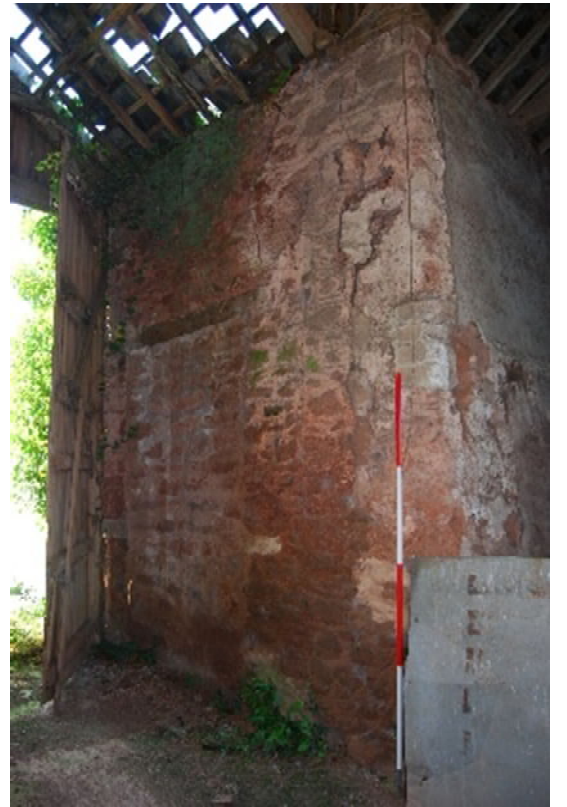
DSC 0045. Interior of small eastern part of B3 (from NW; 2m scales)



DSC 0052. Interior of southern end of B1 (from NE; 2m scales)



DSC 0055. North-west side of southern-most porch of B1, added to SW elevation (from WNW; 2m scales)



DSC 0059. North-west side of northern-most porch of B1, added to SW elevation & with blocked door (from NE; 2m scales)



DSC 0063. South-east interior gable end of B1 (from NW; 2m scales)



DSC 0072. North-east interior elevation of B2, NW end (from SW; 2m scales)



DSC 0073. North-east interior elevation of B2, near centre (from SW; 2m scales)



DSC 0074. North-east interior elevation of B2, along centre (from SW; 2m scales)



DSC 0075. North-east interior elevation of B2, near centre (from SW; 2m scales)



DSC 0076. North-east interior elevation of B2, SE end (from SW; 2m scales)



DSC 0077. South-east interior gable elevation of B2 (from NW; 2m scales)



DSC 0078. South-west interior elevation of B2, SE end (from NE; 2m scales)



DSC 0079. South-west interior elevation of B2, near centre (from NE; 2m scales)



DSC 0080. South-west interior elevation of B2, centre (from NE; 2m scales)



DSC 0088. South-west elevation of B8 bordering farm lane (from SW; 2m scales)



DSC 0092. North-east interior elevation of B8 (from SW; 2m scales)



DSC 0094. South-west interior elevation of B8 (from NE; 2m scales)



DSC 0095. North-west interior elevation of B8 (from SE; 2m scales)



DSC 0098. Interior of B7 (from NE; 2m scales)



DSC 0099. Roof of B7 (from NE; 2m scales)



DSC 0103. South-west interior elevation of B5 (from ESE; 2m scales)



DSC 0102. South-east interior gable elevation of B5 (from N; 2m scales)



DSC 0108. North-east interior elevation of B6, central (from SW; 2m scales)



DSC 0109. North-east interior elevation of B6, central (from SW; 2m scales)



DSC 0118. South-east exterior gable elevation of B1 & south-east exterior elevation & roof of B3 adjacent to graveyard (from SE; 2m scales)



DSC 0121. View of B1 & B2 roofs from graveyard (from SSW)