

APPENDIX 1
PHOTOGRAPHIC RECORD

APPENDIX 1: PHOTOGRAPHIC RECORD

Film 1: Colour digital photographs taken 19th April 2010

Film 2: Colour digital photographs taken 22nd April 2010

Unless labelled (1F), all photos in the register are ground floor views

a) Photographic register by film/frame number

| <i>Film</i> | <i>Frame</i> | <i>Subject</i> | <i>Scale</i> |
|-------------|--------------|---|--------------|
| 1 | 001 | East revetment of mill pond, looking SE | 1m |
| 1 | 002 | Headrace sluice, mill pond, looking S | 1m |
| 1 | 003 | Mill pond dam, looking W | 1m |
| 1 | 004 | Mill pond by-pass sluice, looking W | 1m |
| 1 | 005 | Mill pond by-pass sluice, looking W | - |
| 1 | 006 | Headrace sluice, mill pond, looking S | 1m |
| 1 | 007 | By-pass sluice, looking S | - |
| 1 | 008 | Mill pond dam/weir, looking N | - |
| 1 | 009 | Dairy parlour, S gable and W elevation, looking NE | 1m |
| 1 | 010 | Dairy parlour, W elevation, looking NE | 1m |
| 1 | 011 | Byre, S gable and W elevation, looking NE | 1m |
| 1 | 012 | Byre, detail of quoins and kneeler at SW corner, looking NE | 1m |
| 1 | 013 | Byre, N gable and W elevation, looking SE | 1m |
| 1 | 014 | Byre, N gable, looking S | 1m |
| 1 | 015 | Granary/cart shed range, W gable, looking E | 1m |
| 1 | 016 | Granary/cart shed range, detail of kneeler at SE corner, looking NE | - |
| 1 | 017 | Granary/cart shed range, typical herringbone dressing in W gable, looking E | 1m |
| 1 | 018 | Granary/cart shed range, N elevation and W gable, looking SE | 1m |
| 1 | 019 | Granary/cart shed range, quoins and kneeler at NW corner, looking SE | 1m |
| 1 | 020 | Granary/cart shed range, hatch/trap in centre of N elevation, looking S | 1m |
| 1 | 021 | Granary/cart shed range, N elevation, looking SW | 1m |
| 1 | 022 | Granary/cart shed range, E gable, looking SW | 1m |
| 1 | 023 | Byre, S gable, looking NW | 1m |
| 1 | 024 | Dairy parlour, N gable, looking SW | 1m |
| 1 | 025 | Dairy parlour, E elevation, looking SW | 1m |
| 1 | 026 | Dairy parlour, S gable, looking N | 1m |
| 1 | 027 | Dairy parlour interior, looking S | 1m |
| 1 | 028 | Dairy parlour, roof truss, looking SW | - |
| 1 | 029 | Dairy parlour, detail of roof truss, looking SW | - |
| 1 | 030 | Byre, E elevation, looking NW | 1m |
| 1 | 031 | Byre, E elevation, looking NW | 1m |
| 1 | 032 | Byre, interior of S cell, looking W | 1m |
| 1 | 033 | Byre, typical roof truss in S cell, looking N | - |
| 1 | 034 | Byre, detail of laths to roof slope in S cell, looking W | - |
| 1 | 035 | Byre, interior of N centre cell, looking NE | 1m |
| 1 | 036 | Byre, interior of N cell, looking W | 1m |
| 1 | 037 | Byre, shears on back of door in N cell, looking S | 1m |
| 1 | 038 | Granary/cart shed range, E gable, looking NW | 1m |
| 1 | 039 | Granary/cart shed range, E gable, looking SW | 1m |
| 1 | 040 | Granary/cart shed range, S elevation of cart shed, looking NW | 1m |
| 1 | 041 | Granary/cart shed range, centre arch in S elevation of cart shed, looking N | 1m |
| 1 | 042 | Granary/cart shed range, detail of pier in S elevation of cart shed, looking NW | 1m |
| 1 | 043 | Granary/cart shed range, detail of pier in S elevation of cart shed, looking N | 1m |
| 1 | 044 | Granary/cart shed range, detail of arch voussoirs in S elevation of cart shed, looking NW | - |
| 1 | 045 | Granary/cart shed range, E internal wall of cart shed, looking E | 1m |
| 1 | 046 | Granary/cart shed range, N internal wall of cart shed, looking NE | 1m |
| 1 | 047 | Granary/cart shed range, W internal wall of cart shed, looking W | 1m |
| 1 | 048 | Granary/cart shed range, flagstones to NW corner of cart shed, looking NW | 1m |
| 1 | 049 | Granary/cart shed range, S elevation, looking NW | 1m |
| 1 | 050 | Granary/cart shed range, S elevation, looking E | 1m |
| 1 | 051 | Granary/cart shed range, S elevation, looking NW | 1m |
| 1 | 052 | Granary/cart shed range, S elevation, looking NW | - |
| 1 | 053 | Granary/cart shed range, ventilated opening (closed) in S elevation (stables), looking N | 1m |

| | | | |
|---|-----|--|--------|
| 1 | 054 | Granary/cart shed range, ventilated opening (open) in S elevation (stables), looking N | 1m |
| 1 | 055 | Granary/cart shed range, passage in 2nd cell from W end (stables), looking E | 1m |
| 1 | 056 | Granary/cart shed range, ventilated opening in S wall of 2nd cell from W end (stables), looking S | - |
| 1 | 057 | Granary/cart shed range, central feeding trap in ceiling of 2nd cell from W end (stables), looking N | - |
| 1 | 058 | Granary/cart shed range, tack pegs on S wall of 2nd cell from W end (stables), looking W | - |
| 1 | 059 | Granary/cart shed range, blocked opening in W wall of 2nd cell from W end (stables), looking W | - |
| 1 | 060 | Granary/cart shed range, W end of S elevation (stables), looking NW | 1m |
| 1 | 061 | Granary/cart shed range, interior of W cell (stables), looking NW | 1m |
| 1 | 062 | Granary/cart shed range, interior of W cell (stables), looking E | 1m |
| 1 | 064 | Granary/cart shed range, 1F interior of W cell, looking E | 1m |
| 1 | 066 | Granary/cart shed range, 1F interior of W cell, looking SW | 1m |
| 1 | 067 | Granary/cart shed range, graffiti on W wall of 1F W cell, looking S | 1m |
| 1 | 068 | Granary/cart shed range, 1F E central cell, looking W | 1m |
| 1 | 069 | Granary/cart shed range, roof truss in 1F E central cell, looking W | 1m |
| 1 | 070 | Granary/cart shed range, painting on S wall of 1F E central cell, looking S | 1m |
| 1 | 071 | Granary/cart shed range, W wall doorway of 1F E central cell, looking W | 1m |
| 1 | 073 | Granary/cart shed range, detail of handle on W wall doorway of 1F E central cell, looking W | - |
| 1 | 074 | Granary/cart shed range, roof truss in 1F E cell, looking E | - |
| 1 | 075 | Granary/cart shed range, painting on N wall of 1F E cell, looking NE | - |
| 1 | 076 | Granary/cart shed range, painting on N wall of 1F E cell, looking NE | - |
| 1 | 077 | Granary/cart shed range, painting on S wall of 1F E cell, looking S | - |
| 1 | 078 | Granary/cart shed range, painting on S wall of 1F E cell, looking S | - |
| 1 | 079 | Mill range (E part), E gable, looking W | 1m |
| 1 | 080 | Mill range (E part), plinth to E gable, looking SW | 2 x 1m |
| 1 | 081 | Mill range (E part), E elevation of outshot, looking W | 1m |
| 1 | 082 | Mill range (E part), modern pipe 'tailrace' in E elevation of outshot, looking W | - |
| 1 | 083 | Mill range (E part), E end of S elevation, looking N | - |
| 1 | 084 | Mill range (E part), tail race, looking E | - |
| 1 | 085 | Mill range (E part) and outshot, looking NW | 1m |
| 1 | 086 | Millstone set into floor SE of farmhouse, looking NE | 1m |
| 1 | 087 | Millstone set into floor SE of farmhouse, looking W | 1m |
| 1 | 088 | Mill range (E part), N elevation, looking SE | 1m |
| 1 | 089 | Farm building between mill range and granary/cart shed range, looking W | - |
| 1 | 090 | N side of covered yard, looking W | - |
| 1 | 091 | Mill range (E part), N elevation, looking SW | 1m |
| 1 | 092 | Mill range (E part), N elevation, looking S | 1m |
| 1 | 093 | Mill range (E part), N elevation, looking S | 1m |
| 1 | 094 | Mill range (central part), N elevation, looking SW | 1m |
| 1 | 095 | Mill range (central part), W end of N elevation, looking SE | 1m |
| 1 | 096 | Mill range (W part), looking SE | 1m |
| 1 | 097 | Mill range (W part), looking NE | 1m |
| 1 | 098 | Mill range (central part), S elevation, looking N | 1m |
| 1 | 099 | Mill range (central part), 1F doors in S elevation, looking N | 1m |
| 1 | 100 | Mill range (E part), S elevation, looking NE | 1m |
| 1 | 101 | Mill range (E part), W elevation of outshot, looking NE | 1m |
| 1 | 102 | Mill range (E part), W elevation of outshot, looking N | 1m |
| 1 | 103 | Mill range (E part), S elevation of outshot, looking N | 1m |
| 1 | 104 | Revetment wall to S side of beck, E of Askew Bridge, looking S | - |
| 1 | 105 | Askew Bridge, looking NW | - |
| 1 | 106 | Mill range (E part), internal E wall, looking E | 2m |
| 1 | 107 | Mill range (E part), internal N wall, looking NE | 2m |
| 1 | 108 | Mill range (E part), E roof truss, looking E | - |
| 1 | 109 | Mill range (E part), central roof truss, looking E | - |
| 1 | 110 | Mill range (E part), detail of timber marks on central roof truss, looking W | - |
| 1 | 111 | Mill range (E part), timber over opening to outshot, looking S | - |
| 1 | 112 | Mill range (E part), internal outshot detail, looking SE | 2m |
| 1 | 113 | Mill range (E part), recess to E wall of outshot, looking SE | 2m |
| 1 | 114 | Mill range (E part), internal W wall of outshot, looking SW | 2m |

| | | | |
|---|-----|---|--------|
| 1 | 115 | Mill range (E part), blocked opening in internal W wall of outshut, looking W | 2m |
| 1 | 116 | Mill range (E part), internal NW corner, looking NW | 2m |
| 1 | 117 | Mill range (E part), upper part of internal W wall, looking W | - |
| 1 | 118 | Mill range (E part), socket to internal S wall, looking S | - |
| 1 | 119 | Mill range (central part), internal E wall, looking E | - |
| 1 | 120 | Mill range (central part), roof trusses, looking E | - |
| 1 | 121 | Mill range (central part), internal S wall, looking SW | - |
| 1 | 122 | Mill range (central part), upper part of internal W wall, looking SW | - |
| 1 | 123 | Mill range (central part), upper part of internal W wall, looking SW | - |
| 1 | 124 | Mill range (W part), internal view looking E | - |
| 1 | 125 | Mill range (W part), internal view looking SW | - |
| 1 | 126 | Granary/cart shed range, interior of 3rd cell from E end (loose boxes), looking NE | 1m |
| 1 | 128 | Mill pond, looking SE | 2 x 1m |
| | | | |
| 2 | 126 | Fieldhouse, looking NE | 1m |
| 2 | 127 | Fieldhouse, looking NE | 1m |
| 2 | 128 | Fieldhouse (main part), S elevation of W end, looking N | 1m |
| 2 | 129 | Fieldhouse (main part), doorway to S elevation, looking N | 1m |
| 2 | 130 | Fieldhouse (S range), W elevation, looking E | 1m |
| 2 | 131 | Fieldhouse (S range), front of door to S cell in W elevation, looking E | 1m |
| 2 | 132 | Fieldhouse (S range), rear of door to N cell in W elevation, looking E | 1m |
| 2 | 133 | Fieldhouse (S range), S gable, looking N | 1m |
| 2 | 134 | Fieldhouse (S range), detail of tusked quoins in SW corner, looking NE | 1m |
| 2 | 135 | Fieldhouse, looking W | 1m |
| 2 | 136 | Fieldhouse (main part), E gable, looking W | 1m |
| 2 | 137 | Fieldhouse (main part), W gable, looking E | 1m |
| 2 | 139 | Fieldhouse (main part), fireplace to W gable, looking E | 1m |
| 2 | 140 | Fieldhouse (main part), 1F doorway to W gable, looking E | - |
| 2 | 142 | Fieldhouse (main part), N elevation, looking S | 1m |
| 2 | 143 | Fieldhouse (S range), rear of door to S cell in W elevation, looking S | 1m |
| 2 | 144 | Fieldhouse (S range), front of door to N cell in W elevation, looking E | 1m |
| 2 | 145 | Fieldhouse (S range), doorway to S cell in W elevation, showing cut outs for earlier door, looking SE | 1m |
| 2 | 146 | Fieldhouse (S range), S tethering post in S cell, looking SE | 1m |
| 2 | 147 | Fieldhouse (S range), tethering posts in S cell, looking E | 1m |
| 2 | 148 | Fieldhouse (S range), S internal wall of S cell, looking SE | 1m |
| 2 | 149 | Fieldhouse (S range), N tethering post in S cell, looking NE | 1m |
| 2 | 150 | Fieldhouse (S range), internal N cell, looking NE | 1m |
| 2 | 151 | Fieldhouse (S range), rack to S wall in N cell, looking SE | 1m |
| 2 | 152 | Fieldhouse (S range), flooring in N cell, looking W | 1m |
| 2 | 153 | Fieldhouse (main part), front of door to S elevation, looking N | 1m |
| 2 | 154 | Fieldhouse (main part), rear of door to S elevation, looking S | 1m |
| 2 | 155 | Fieldhouse (main part), W internal wall, looking W | 1m |
| 2 | 156 | Fieldhouse (main part), S internal wall, looking SW | 1m |
| 2 | 157 | Fieldhouse (main part), E internal wall, looking E | 1m |
| 2 | 158 | Fieldhouse (main part), N internal wall, looking NE | 1m |
| 2 | 159 | Fieldhouse (main part), roof trusses, looking W | - |
| 2 | 160 | Fieldhouse (main part), E truss, looking E | - |
| 2 | 161 | Fieldhouse (main part), roof trusses, looking E | 1m |
| 2 | 162 | Fieldhouse (main part), detail of rear of upper leaf, door of S elevation, looking S | - |
| 2 | 163 | Fieldhouse (main part) detail of rear of lower leaf, door of S elevation, looking S | - |
| 2 | 164 | Fieldhouse (main part), handle to door of S elevation, looking S | - |
| 2 | 165 | Fieldhouse (main part), graffiti on W internal wall, looking W | - |
| 2 | 166 | Fieldhouse (main part), graffiti on E internal wall, looking E | - |
| 2 | 169 | Fieldhouse (S range), N tethering post in S cell, looking N | - |
| 2 | 170 | Fieldhouse (S range), S tethering post in S cell, looking S | - |
| 2 | 171 | Fieldhouse (S range), detail of catch to door to S cell, looking E | - |

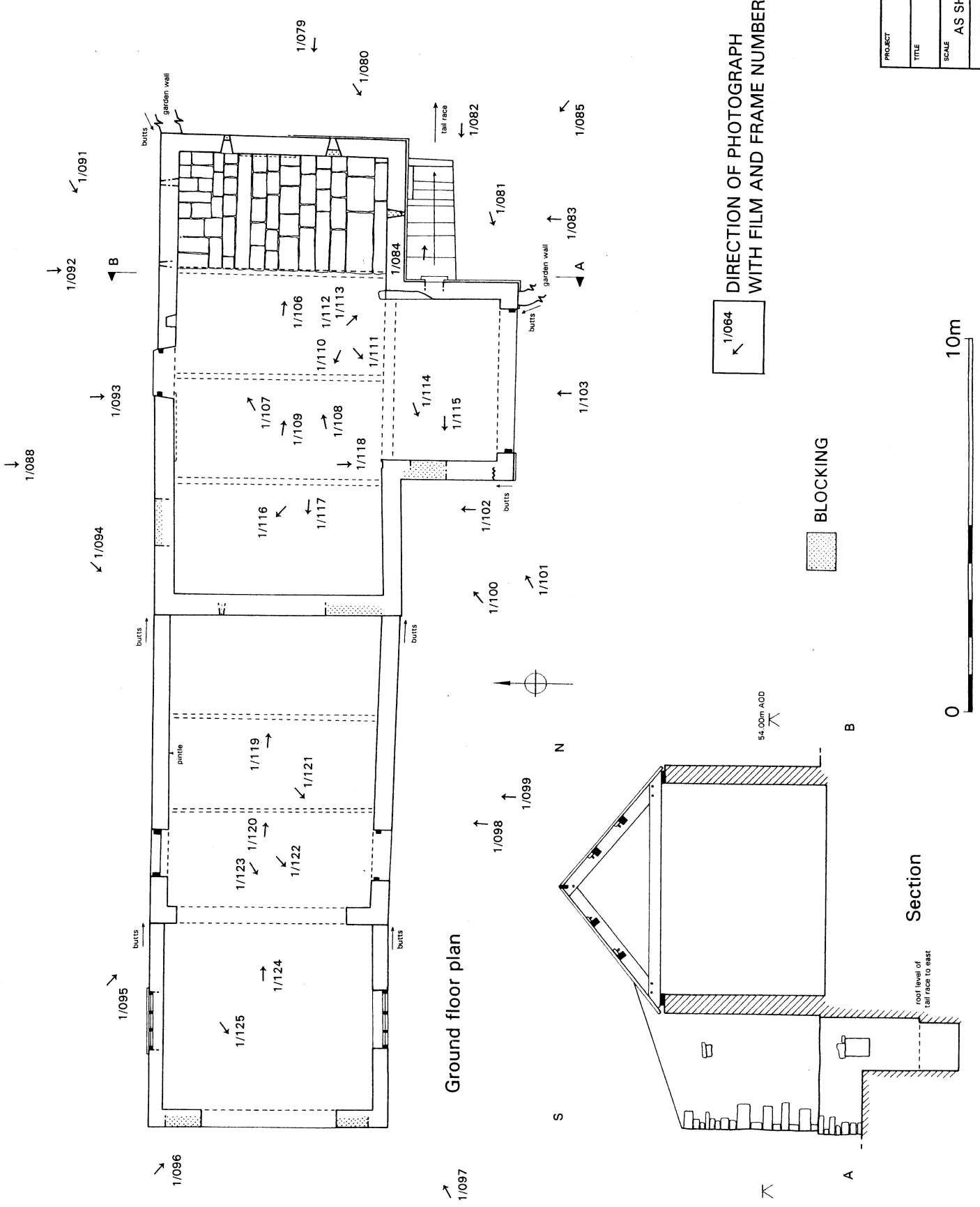
b) Photographic register by recorded building

| <i>Film</i> | <i>Frame</i> | <i>Subject</i> | <i>Scale</i> |
|-------------------------|--------------|--|--------------|
| Granary/cart shed range | | | |
| 1 | 015 | Granary/cart shed range, W gable, looking E | 1m |
| 1 | 016 | Granary/cart shed range, detail of kneeler at SE corner, looking NE | - |
| 1 | 017 | Granary/cart shed range, typical herringbone dressing in W gable, looking E | 1m |
| 1 | 018 | Granary/cart shed range, N elevation and W gable, looking SE | 1m |
| 1 | 019 | Granary/cart shed range, quoins and kneeler at NW corner, looking SE | 1m |
| 1 | 020 | Granary/cart shed range, hatch/trap in centre of N elevation, looking S | 1m |
| 1 | 021 | Granary/cart shed range, N elevation, looking SW | 1m |
| 1 | 022 | Granary/cart shed range, E gable, looking SW | 1m |
| 1 | 038 | Granary/cart shed range, E gable, looking NW | 1m |
| 1 | 039 | Granary/cart shed range, E gable, looking SW | 1m |
| 1 | 040 | Granary/cart shed range, S elevation of cart shed, looking NW | 1m |
| 1 | 041 | Granary/cart shed range, centre arch in S elevation of cart shed, looking N | 1m |
| 1 | 042 | Granary/cart shed range, detail of pier in S elevation of cart shed, looking NW | 1m |
| 1 | 043 | Granary/cart shed range, detail of pier in S elevation of cart shed, looking N | 1m |
| 1 | 044 | Granary/cart shed range, detail of arch voussiors in S elevation of cart shed, looking NW | - |
| 1 | 045 | Granary/cart shed range, E internal wall of cart shed, looking E | 1m |
| 1 | 046 | Granary/cart shed range, N internal wall of cart shed, looking NE | 1m |
| 1 | 047 | Granary/cart shed range, W internal wall of cart shed, looking W | 1m |
| 1 | 048 | Granary/cart shed range, flagstones to NW corner of cart shed, looking NW | 1m |
| 1 | 049 | Granary/cart shed range, S elevation, looking NW | 1m |
| 1 | 050 | Granary/cart shed range, S elevation, looking E | 1m |
| 1 | 051 | Granary/cart shed range, S elevation, looking NW | 1m |
| 1 | 052 | Granary/cart shed range, S elevation, looking NW | - |
| 1 | 053 | Granary/cart shed range, ventilated opening (closed) in S elevation (stables), looking N | 1m |
| 1 | 054 | Granary/cart shed range, ventilated opening (open) in S elevation (stables), looking N | 1m |
| 1 | 055 | Granary/cart shed range, passage in 2nd cell from W end (stables), looking E | 1m |
| 1 | 056 | Granary/cart shed range, ventilated opening in S wall of 2nd cell from W end (stables), looking S | - |
| 1 | 057 | Granary/cart shed range, central feeding trap in ceiling of 2nd cell from W end (stables), looking N | - |
| 1 | 058 | Granary/cart shed range, tack pegs on S wall of 2nd cell from W end (stables), looking W | - |
| 1 | 059 | Granary/cart shed range, blocked opening in W wall of 2nd cell from W end (stables), looking W | - |
| 1 | 060 | Granary/cart shed range, W end of S elevation (stables), looking NW | 1m |
| 1 | 061 | Granary/cart shed range, interior of W cell (stables), looking NW | 1m |
| 1 | 062 | Granary/cart shed range, interior of W cell (stables), looking E | 1m |
| 1 | 064 | Granary/cart shed range, 1F interior of W cell, looking E | 1m |
| 1 | 066 | Granary/cart shed range, 1F interior of W cell, looking SW | 1m |
| 1 | 067 | Granary/cart shed range, graffiti on W wall of 1F W cell, looking S | 1m |
| 1 | 068 | Granary/cart shed range, 1F E central cell, looking W | 1m |
| 1 | 069 | Granary/cart shed range, roof truss in 1F E central cell, looking W | 1m |
| 1 | 070 | Granary/cart shed range, painting on S wall of 1F E central cell, looking S | 1m |
| 1 | 071 | Granary/cart shed range, W wall doorway of 1F E central cell, looking W | 1m |
| 1 | 073 | Granary/cart shed range, detail of handle on W wall doorway of 1F E central cell, looking W | - |
| 1 | 074 | Granary/cart shed range, roof truss in 1F E cell, looking E | - |
| 1 | 075 | Granary/cart shed range, painting on N wall of 1F E cell, looking NE | - |
| 1 | 076 | Granary/cart shed range, painting on N wall of 1F E cell, looking NE | - |
| 1 | 077 | Granary/cart shed range, painting on S wall of 1F E cell, looking S | - |
| 1 | 078 | Granary/cart shed range, painting on S wall of 1F E cell, looking S | - |
| 1 | 126 | Granary/cart shed range, interior of 3rd cell from E end (loose boxes), looking NE | 1m |
| Mill range | | | |
| 1 | 079 | Mill range (E part), E gable, looking W | 1m |
| 1 | 080 | Mill range (E part), plinth to E gable, looking SW | 2 x 1m |
| 1 | 081 | Mill range (E part), E elevation of outshot, looking W | 1m |
| 1 | 082 | Mill range (E part), modern pipe 'tailrace' in E elevation of outshot, looking W | - |

| | | | |
|----------------|-----|---|----|
| 1 | 083 | Mill range (E part), E end of S elevation, looking N | - |
| 1 | 084 | Mill range (E part), tail race, looking E | - |
| 1 | 085 | Mill range (E part) and outshot, looking NW | 1m |
| 1 | 088 | Mill range (E part), N elevation, looking SE | 1m |
| 1 | 091 | Mill range (E part), N elevation, looking SW | 1m |
| 1 | 092 | Mill range (E part), N elevation, looking S | 1m |
| 1 | 093 | Mill range (E part), N elevation, looking S | 1m |
| 1 | 094 | Mill range (central part), N elevation, looking SW | 1m |
| 1 | 095 | Mill range (central part), W end of N elevation, looking SE | 1m |
| 1 | 096 | Mill range (W part), looking SE | 1m |
| 1 | 097 | Mill range (W part), looking NE | 1m |
| 1 | 098 | Mill range (central part), S elevation, looking N | 1m |
| 1 | 099 | Mill range (central part), 1F doors in S elevation, looking N | 1m |
| 1 | 100 | Mill range (E part), S elevation, looking NE | 1m |
| 1 | 101 | Mill range (E part), W elevation of outshot, looking NE | 1m |
| 1 | 102 | Mill range (E part), W elevation of outshot, looking N | 1m |
| 1 | 103 | Mill range (E part), S elevation of outshot, looking N | 1m |
| 1 | 106 | Mill range (E part), internal E wall, looking E | 2m |
| 1 | 107 | Mill range (E part), internal N wall, looking NE | 2m |
| 1 | 108 | Mill range (E part), E roof truss, looking E | - |
| 1 | 109 | Mill range (E part), central roof truss, looking E | - |
| 1 | 110 | Mill range (E part), detail of timber marks on central roof truss, looking W | - |
| 1 | 111 | Mill range (E part), timber over opening to outshot, looking S | - |
| 1 | 112 | Mill range (E part), internal outshot detail, looking SE | 2m |
| 1 | 113 | Mill range (E part), recess to E wall of outshot, looking SE | 2m |
| 1 | 114 | Mill range (E part), internal W wall of outshot, looking SW | 2m |
| 1 | 115 | Mill range (E part), blocked opening in internal W wall of outshot, looking W | 2m |
| 1 | 116 | Mill range (E part), internal NW corner, looking NW | 2m |
| 1 | 117 | Mill range (E part), upper part of internal W wall, looking W | - |
| 1 | 118 | Mill range (E part), socket to internal S wall, looking S | - |
| 1 | 119 | Mill range (central part), internal E wall, looking E | - |
| 1 | 120 | Mill range (central part), roof trusses, looking E | - |
| 1 | 121 | Mill range (central part), internal S wall, looking SW | - |
| 1 | 122 | Mill range (central part), upper part of internal W wall, looking SW | - |
| 1 | 123 | Mill range (central part), upper part of internal W wall, looking SW | - |
| 1 | 124 | Mill range (W part), internal view looking E | - |
| 1 | 125 | Mill range (W part), internal view looking SW | - |
| Byre/cow house | | | |
| 1 | 011 | Byre, S gable and W elevation, looking NE | 1m |
| 1 | 012 | Byre, detail of quoins and kneeler at SW corner, looking NE | 1m |
| 1 | 013 | Byre, N gable and W elevation, looking SE | 1m |
| 1 | 014 | Byre, N gable, looking S | 1m |
| 1 | 023 | Byre, S gable, looking NW | 1m |
| 1 | 030 | Byre, E elevation, looking NW | 1m |
| 1 | 031 | Byre, E elevation, looking NW | 1m |
| 1 | 032 | Byre, interior of S cell, looking W | 1m |
| 1 | 033 | Byre, typical roof truss in S cell, looking N | - |
| 1 | 034 | Byre, detail of laths to roof slope in S cell, looking W | - |
| 1 | 035 | Byre, interior of N centre cell, looking NE | 1m |
| 1 | 036 | Byre, interior of N cell, looking W | 1m |
| 1 | 037 | Byre, shears on back of door in N cell, looking S | 1m |
| Dairy parlour | | | |
| 1 | 009 | Dairy parlour, S gable and W elevation, looking NE | 1m |
| 1 | 010 | Dairy parlour, W elevation, looking NE | 1m |
| 1 | 024 | Dairy parlour, N gable, looking SW | 1m |
| 1 | 025 | Dairy parlour, E elevation, looking SW | 1m |
| 1 | 026 | Dairy parlour, S gable, looking N | 1m |
| 1 | 027 | Dairy parlour interior, looking S | 1m |
| 1 | 028 | Dairy parlour, roof truss, looking SW | - |
| 1 | 029 | Dairy parlour, detail of roof truss, looking SW | - |
| Fieldhouse | | | |

| | | | |
|-------|-----|---|--------|
| 2 | 126 | Fieldhouse, looking NE | 1m |
| 2 | 127 | Fieldhouse, looking NE | 1m |
| 2 | 128 | Fieldhouse (main part), S elevation of W end, looking N | 1m |
| 2 | 129 | Fieldhouse (main part), doorway to S elevation, looking N | 1m |
| 2 | 130 | Fieldhouse (S range), W elevation, looking E | 1m |
| 2 | 131 | Fieldhouse (S range), front of door to S cell in W elevation, looking E | 1m |
| 2 | 132 | Fieldhouse (S range), rear of door to N cell in W elevation, looking E | 1m |
| 2 | 133 | Fieldhouse (S range), S gable, looking N | 1m |
| 2 | 134 | Fieldhouse (S range), detail of tusked quoins in SW corner, looking NE | 1m |
| 2 | 135 | Fieldhouse, looking W | 1m |
| 2 | 136 | Fieldhouse (main part), E gable, looking W | 1m |
| 2 | 137 | Fieldhouse (main part), W gable, looking E | 1m |
| 2 | 139 | Fieldhouse (main part), fireplace to W gable, looking E | 1m |
| 2 | 140 | Fieldhouse (main part), 1F doorway to W gable, looking E | - |
| 2 | 142 | Fieldhouse (main part), N elevation, looking S | 1m |
| 2 | 143 | Fieldhouse (S range), rear of door to S cell in W elevation, looking S | 1m |
| 2 | 144 | Fieldhouse (S range), front of door to N cell in W elevation, looking E | 1m |
| 2 | 145 | Fieldhouse (S range), doorway to S cell in W elevation, showing cut outs for earlier door, looking SE | 1m |
| 2 | 146 | Fieldhouse (S range), S tethering post in S cell, looking SE | 1m |
| 2 | 147 | Fieldhouse (S range), tethering posts in S cell, looking E | 1m |
| 2 | 148 | Fieldhouse (S range), S internal wall of S cell, looking SE | 1m |
| 2 | 149 | Fieldhouse (S range), N tethering post in S cell, looking NE | 1m |
| 2 | 150 | Fieldhouse (S range), internal N cell, looking NE | 1m |
| 2 | 151 | Fieldhouse (S range), rack to S wall in N cell, looking SE | 1m |
| 2 | 152 | Fieldhouse (S range), flooring in N cell, looking W | 1m |
| 2 | 153 | Fieldhouse (main part), front of door to S elevation, looking N | 1m |
| 2 | 154 | Fieldhouse (main part), rear of door to S elevation, looking S | 1m |
| 2 | 155 | Fieldhouse (main part), W internal wall, looking W | 1m |
| 2 | 156 | Fieldhouse (main part), S internal wall, looking SW | 1m |
| 2 | 157 | Fieldhouse (main part), E internal wall, looking E | 1m |
| 2 | 158 | Fieldhouse (main part), N internal wall, looking NE | 1m |
| 2 | 159 | Fieldhouse (main part), roof trusses, looking W | - |
| 2 | 160 | Fieldhouse (main part), E truss, looking E | - |
| 2 | 161 | Fieldhouse (main part), roof trusses, looking E | 1m |
| 2 | 162 | Fieldhouse (main part), detail of rear of upper leaf, door of S elevation, looking S | - |
| 2 | 163 | Fieldhouse (main part) detail of rear of lower leaf, door of S elevation, looking S | - |
| 2 | 164 | Fieldhouse (main part), handle to door of S elevation, looking S | - |
| 2 | 165 | Fieldhouse (main part), graffiti on W internal wall, looking W | - |
| 2 | 166 | Fieldhouse (main part), graffiti on E internal wall, looking E | - |
| 2 | 169 | Fieldhouse (S range), N tethering post in S cell, looking N | - |
| 2 | 170 | Fieldhouse (S range), S tethering post in S cell, looking S | - |
| 2 | 171 | Fieldhouse (S range), detail of catch to door to S cell, looking E | - |
| Other | | | |
| 1 | 001 | East revetment of mill pond, looking SE | 1m |
| 1 | 002 | Headrace sluice, mill pond, looking S | 1m |
| 1 | 003 | Mill pond dam, looking W | 1m |
| 1 | 004 | Mill pond by-pass sluice, looking W | 1m |
| 1 | 005 | Mill pond by-pass sluice, looking W | - |
| 1 | 006 | Headrace sluice, mill pond, looking S | 1m |
| 1 | 007 | By-pass sluice, looking S | - |
| 1 | 008 | Mill pond dam/weir, looking N | - |
| 1 | 089 | Farm building between mill range and granary/cart shed range, looking W | - |
| 1 | 090 | N side of covered yard, looking W | - |
| 1 | 086 | Millstone set into floor SE of farmhouse, looking NE | 1m |
| 1 | 087 | Millstone set into floor SE of farmhouse, looking W | 1m |
| 1 | 104 | Revetment wall to S side of beck, E of Askew Bridge, looking S | - |
| 1 | 105 | Askew Bridge, looking NW | - |
| 1 | 128 | Mill pond, looking SE | 2 x 1m |

| | | | |
|---------|----------------|--------|----------|
| PROJECT | LOW ASKEW FARM | | |
| TITLE | MILL RANGE | | |
| SCALE | AS SHOWN | DATE | NOV 2011 |
| | EDAS | FIGURE | A1/1 |



1/064
 DIRECTION OF PHOTOGRAPH
 WITH FILM AND FRAME NUMBER

BLOCKING

Section

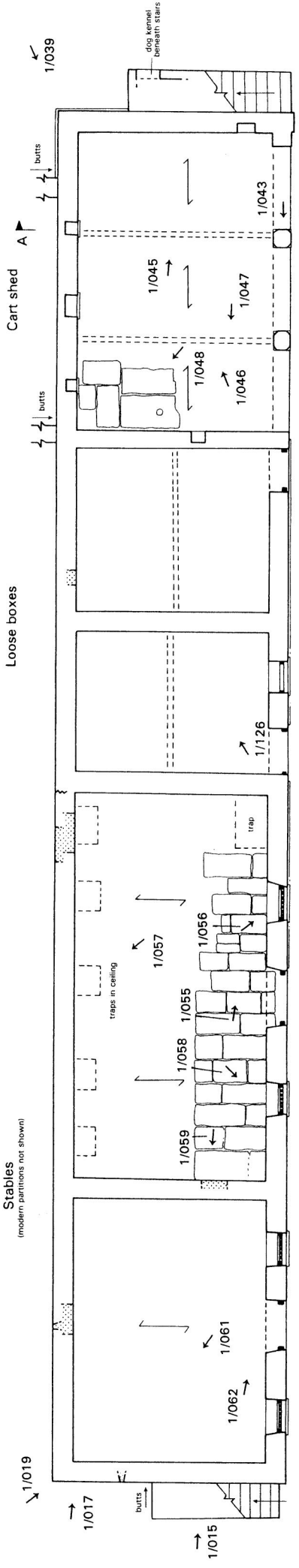


1/022 ↙

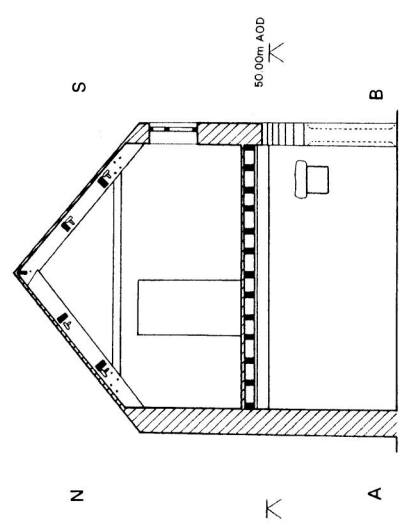
1/021 ↙

1/020 ↓

1/018 ↘



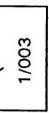
Ground floor plan



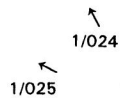
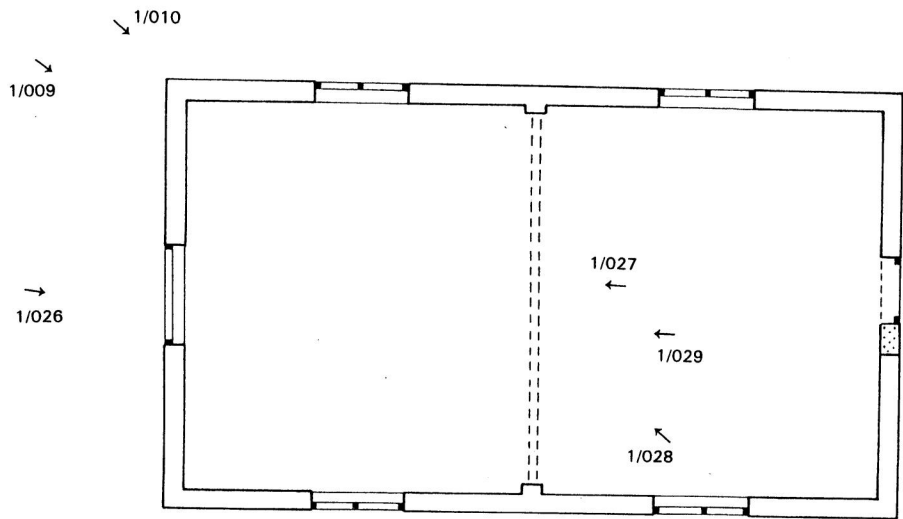
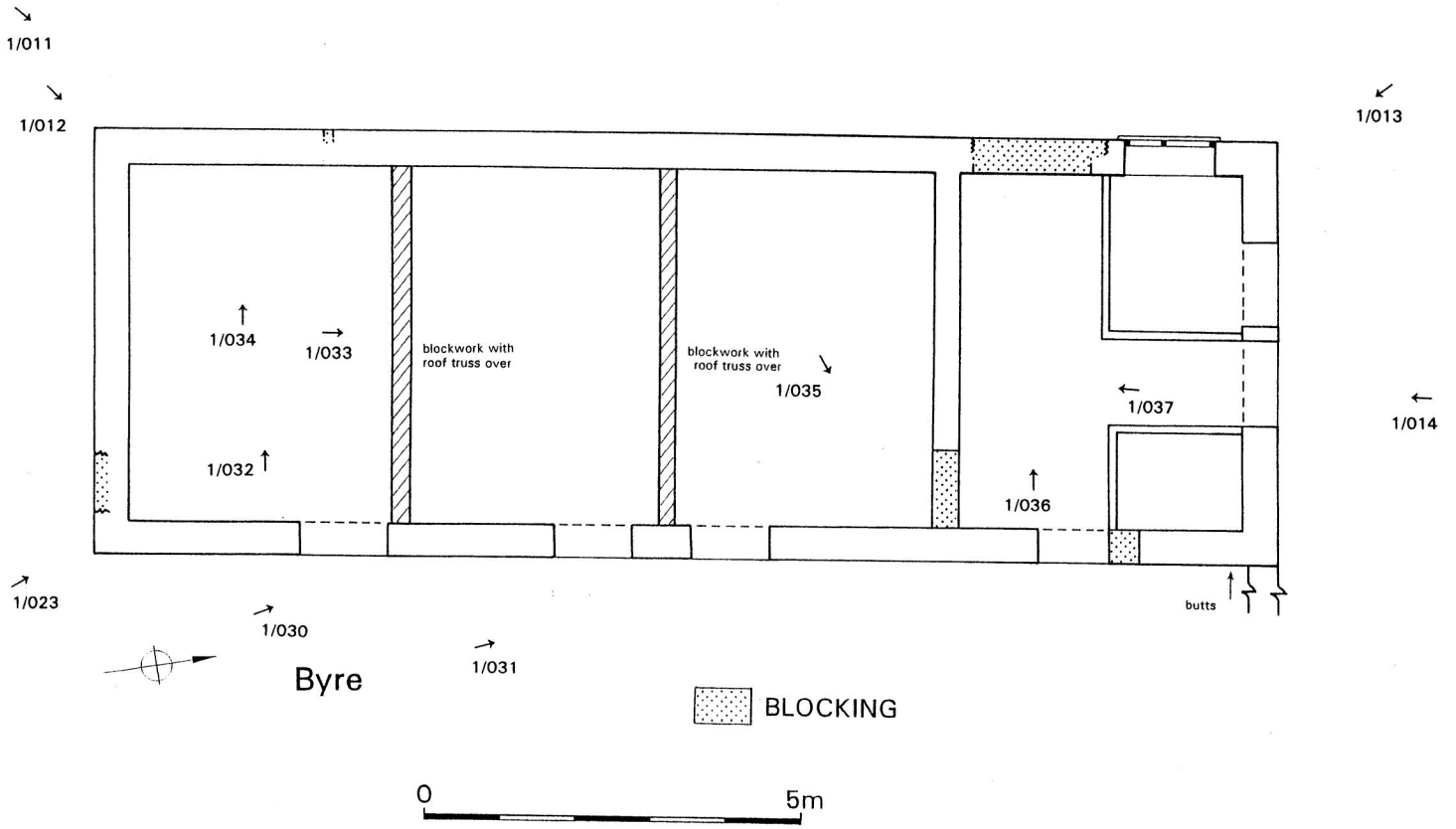
BLOCKING



DIRECTION OF PHOTOGRAPH
WITH FILM AND FRAME NUMBER
(ground floor only)



| | | | |
|---------|---------------------------|------|----------|
| PROJECT | LOW ASKEW FARM | | |
| TITLE | GRANARY / CART SHED RANGE | | |
| SCALE | AS SHOWN | DATE | NOV 2011 |
| FIGURE | EDAS | | A1/2 |

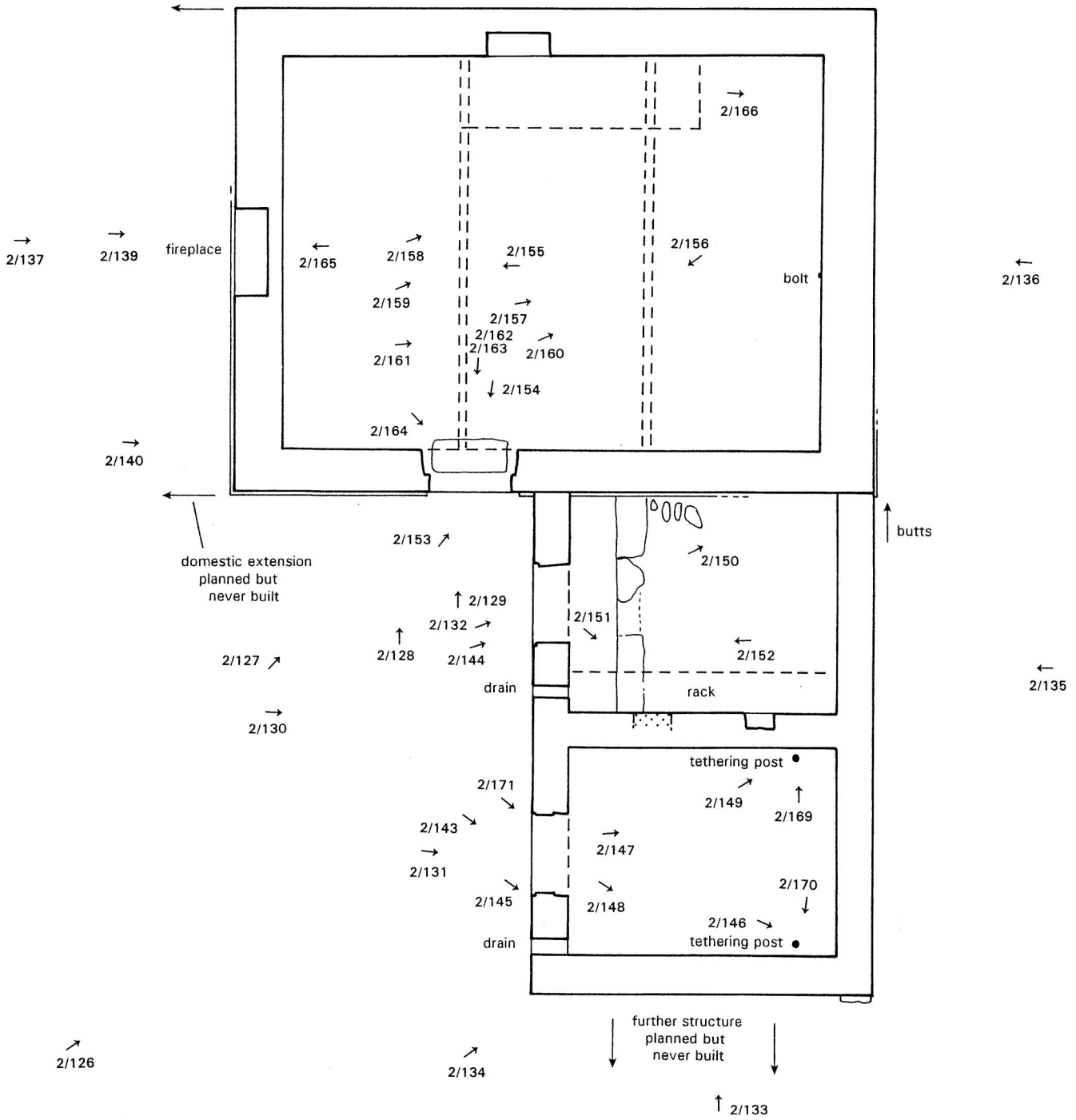


1/001
 DIRECTION OF PHOTOGRAPH
 WITH FILM AND FRAME NUMBER



| | | | |
|---------|----------|------------------------|----------|
| PROJECT | | LOW ASKEW FARM | |
| TITLE | | BYRE AND DAIRY PARLOUR | |
| SCALE | AS SHOWN | DATE | NOV 2011 |
| EDAS | | FIGURE | A1/3 |

↓ 2/142




 1/002 DIRECTION OF PHOTOGRAPH WITH FILM AND FRAME NUMBER



| | | | |
|------------|----------|----------------|----------|
| PROJECT | | LOW ASKEW FARM | |
| TITLE | | | |
| FIELDHOUSE | | | |
| SCALE | AS SHOWN | DATE | NOV 2011 |
| EDAS | FIGURE | | A1/4 |



1-001.JPG



1-002.JPG



1-003.JPG



1-004.JPG



1-005.JPG



1-006.JPG



1-007.JPG



1-008.JPG



1-009.JPG



1-010.JPG



1-011.JPG



1-012.JPG



1-013.JPG



1-014.JPG



1-015.JPG



1-016.JPG



1-017.JPG



1-018.JPG



1-019.JPG



1-020.JPG



1-021.JPG



1-022.JPG



1-023.JPG



1-024.JPG



1-025.JPG



1-026.JPG



1-027.JPG



1-028.JPG



1-029.JPG



1-030.JPG



1-031.JPG



1-032.JPG



1-033.JPG



1-034.JPG



1-035.JPG



1-036.JPG



1-037.JPG



1-038.JPG



1-039.JPG



1-040.JPG



1-041.JPG



1-042.JPG



1-043.JPG



1-044.JPG



1-045.JPG



1-046.JPG



1-047.JPG



1-048.JPG



1-049.JPG



1-050.JPG



1-051.JPG



1-052.JPG



1-053.JPG



1-054.JPG



1-055.JPG



1-056.JPG



1-057.JPG



1-058.JPG



1-059.JPG



1-060.JPG



1-061.JPG



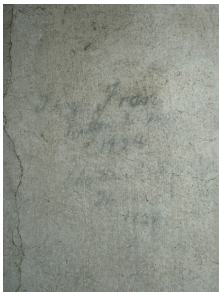
1-062.JPG



1-064.JPG



1-066.JPG



1-067.JPG



1-068.JPG



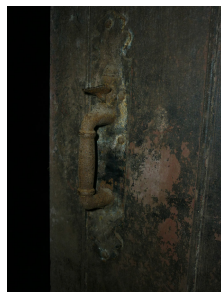
1-069.JPG



1-070.JPG



1-071.JPG



1-073.JPG



1-074.JPG



1-075.JPG



1-076.JPG



1-077.JPG



1-078.JPG



1-079.JPG



1-080.JPG



1-081.JPG



1-082.JPG



1-083.JPG



1-084.JPG



1-085.JPG



1-086.JPG



1-087.JPG



1-088.JPG



1-089.JPG



1-090.JPG



1-091.JPG



1-092.JPG



1-093.JPG



1-094.JPG



1-095.JPG



1-096.JPG



1-097.JPG



1-098.JPG



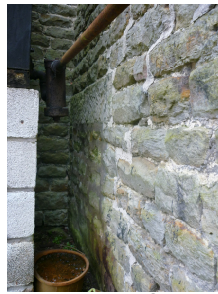
1-099.JPG



1-100.JPG



1-101.JPG



1-102.JPG



1-103.JPG



1-104.JPG



1-105.JPG



1-106.JPG



1-107.JPG



1-108.JPG



1-109.JPG



1-110.JPG



1-111.JPG



1-112.JPG



1-113.JPG



1-114.JPG



1-115.JPG



1-116.JPG



1-117.JPG



1-118.JPG



1-119.JPG



1-120.JPG



1-121.JPG



1-122.JPG



1-123.JPG



1-124.JPG



1-125.JPG



1-126.JPG



1-128.JPG



2-126.JPG



2-127.JPG



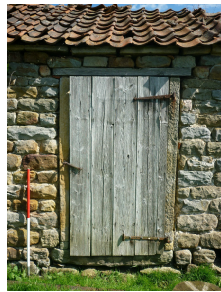
2-128.JPG



2-129.JPG



2-130.JPG



2-131.JPG



2-132.JPG



2-133.JPG



2-134.JPG



2-135.JPG



2-136.JPG



2-137.JPG



2-139.JPG



2-140.JPG



2-142.JPG



2-143.JPG



2-144.JPG



2-145.JPG



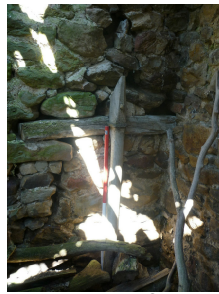
2-146.JPG



2-147.JPG



2-148.JPG



2-149.JPG



2-150.JPG



2-151.JPG



2-152.JPG



2-153.JPG



2-154.JPG



2-155.JPG



2-156.JPG



2-157.JPG



2-158.JPG



2-159.JPG



2-160.JPG



2-161.JPG



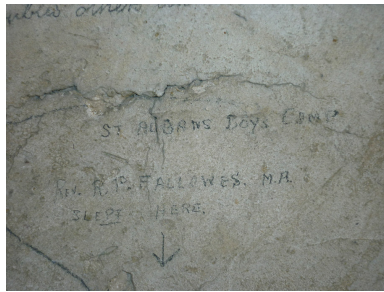
2-162.JPG



2-163.JPG



2-164.JPG



2-165.JPG



2-166.JPG



2-169.JPG



2-170.JPG



2-171.JPG