



Plate 1: Aerial photograph of Sheffield Markets, 1st January 2010 (Google Earth).

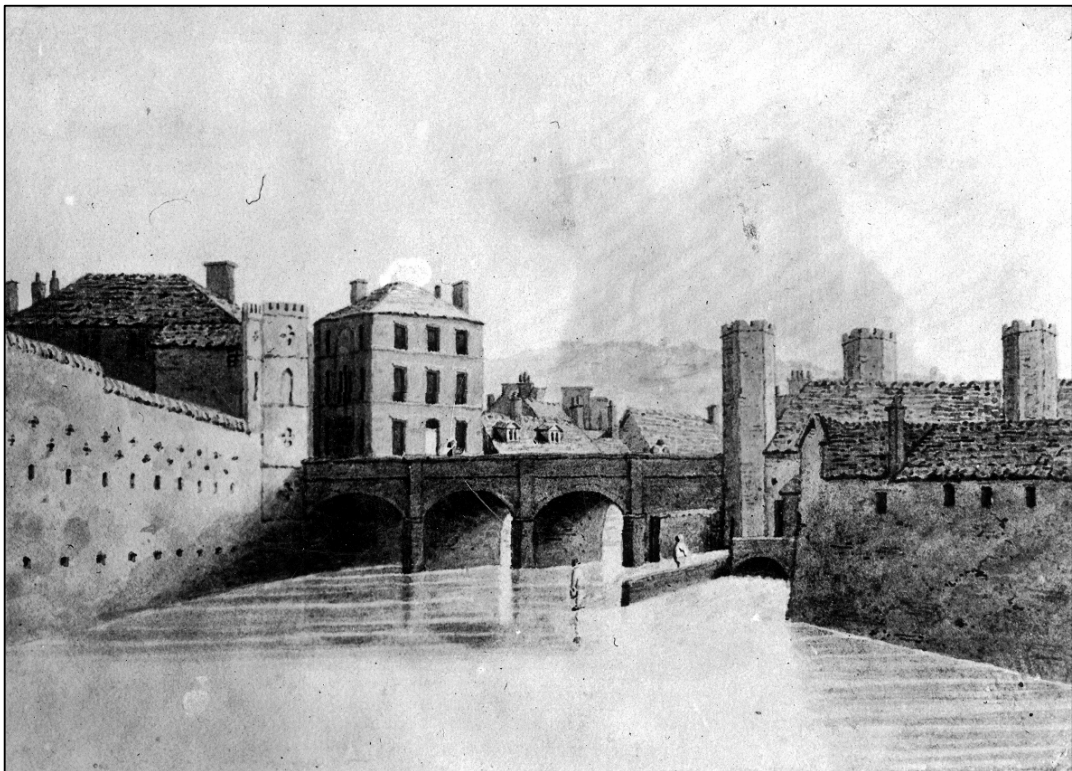


Plate 2: Lady's Bridge in 1802, Wicker Tilt on right (www.picturesheffield.com, s07499).



Plate 3: Lady's Bridge and Wicker Tilt (Huntsman's Forge), No. 2, Wicker, before 1901
(www.picturesheffield.com, s07493).



Plate 4: Royal Hotel, Waingate (left) and corner of Exchange Street (right)
(www.picturesheffield.com, y01611).



Plate 5: Retaining wall on west side of Castle Folds Lane, taken by J B Himsworth, September 1928 (www.picturesheffield.com, y00898).

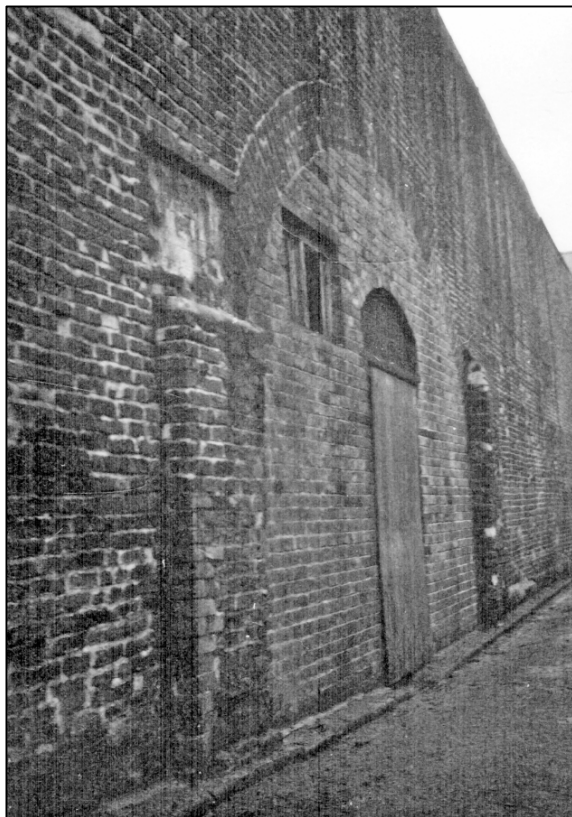


Plate 6: Brick wall on Chandlers Row, taken by J B Himsworth, October 1928 (www.picturesheffield.com, y00887).

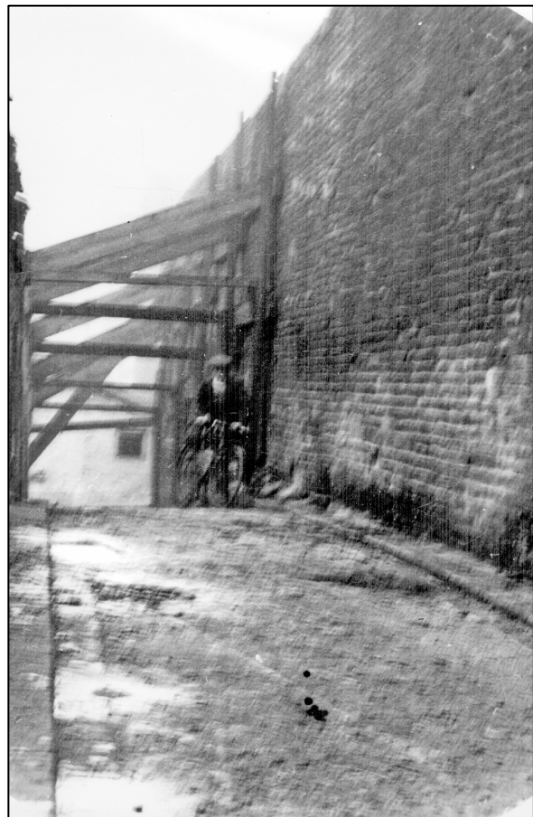


Plate 7: Overlooking Chandler's Row, taken by J B Himsworth, October 1928 (www.picturesheffield.com, y00884 - blurred).



Plate 8: Shambles Lane, Wholesale Meat Market and Slaughter Houses, taken 1900 (www.picturesheffield.com, s01744).



Plate 9: Demolition of Shambles Slaughter House, newly built sewer manhole (for a new road for the continuation of Bridge Street) right, Lady's Bridge Hotel and Exchange Brewery in background, taken by J B Himsworth, September 1929 (www.picturesheffield.com, y00890).



Plate 10: Remains of Shambles Slaughter House, showing ancient beams discovered in a horizontal position and newly built sewer manhole (for a new road for the continuation of Bridge Street) in background, taken by J B Himsworth, September 1929 (www.picturesheffield.com, y00892).



Plate 11: Shambles Lane approach, taken by J B Himsworth (www.picturesheffield.com, y00889).

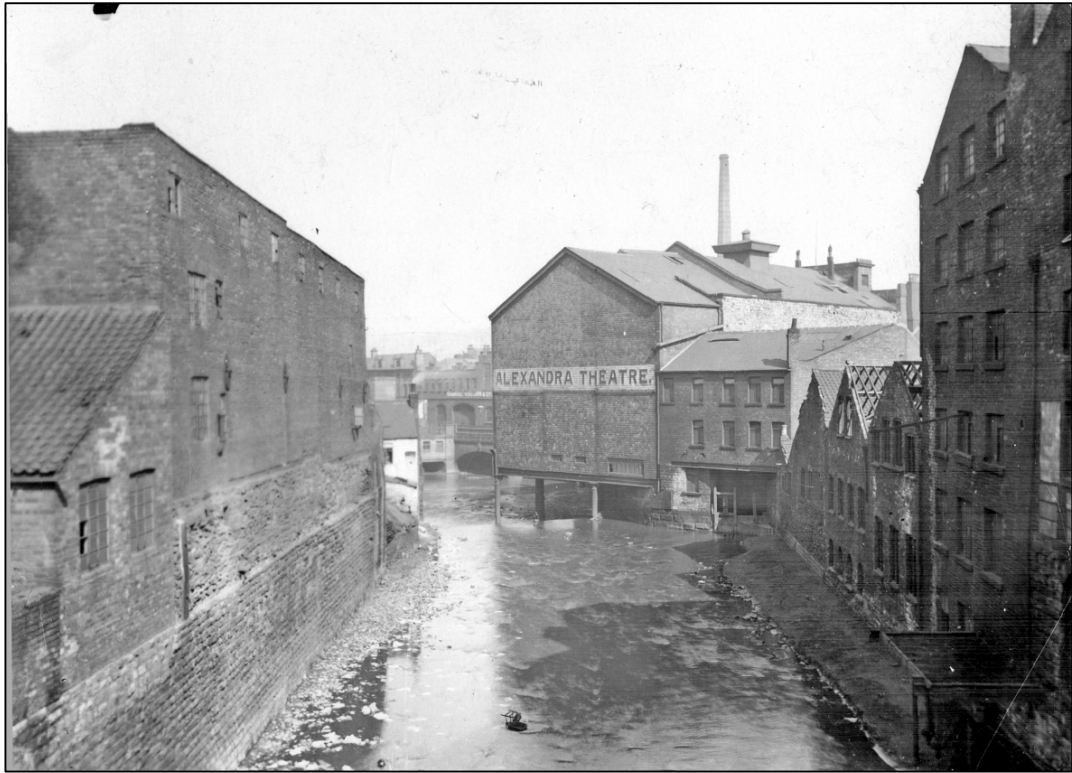


Plate 12: Rear view of Alexandra Theatre, showing stilts over the combined flow of the rivers Don and Sheaf, from Exchange Street Bridge, taken 1900-1919 (www.picturesheffield.com, s12223).

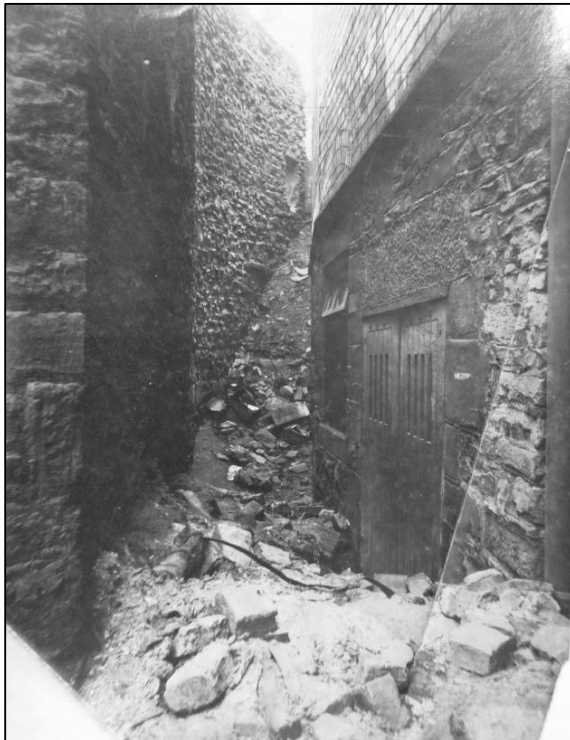


Plate 13: "East wall of passage connected with the Sheffield Castle", off Castle Folds Lane, taken June 1918 (MSA: Sheffield Castle Project File) (photo 3/872).

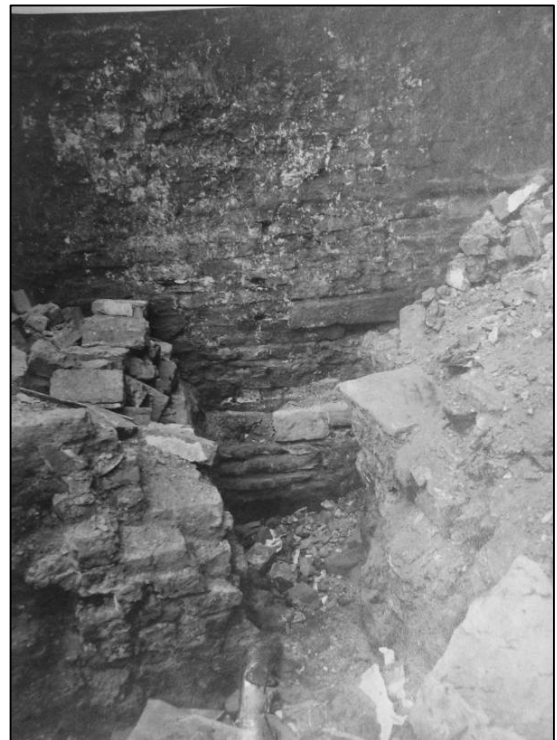


Plate 14: "Part of Sheffield Castle wall, discovered while pulling down old house built in 1666 on the site of the Sheffield Castle moat", taken June 1918 (MSA Sheffield Castle Project File) (photo 3/881).

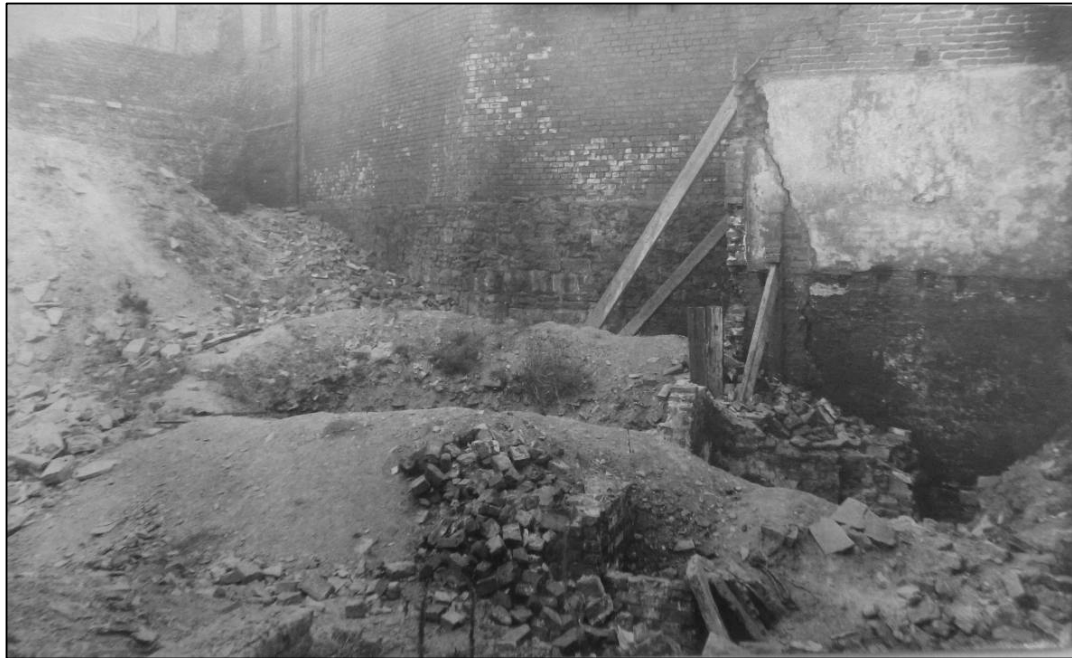


Plate 15: "West wall of passage, but East of Castle site", taken June 1918
(MSA: Sheffield Castle Project File) (photo 3/875).



Plate 16: Construction of Sheaf culvert, 1915-16 (photo IMG 6025 supplied by SCC).



Plate 17: Waingate, junction with Exchange Street, Haymarket and Castle Street, 1925-1939, showing single storey Brightside and Carbrook Co-operative Society building (www.picturesheffield.com, s20303).



Plate 18: Brightside and Carbrook Co-operative Society building, Exchange Street frontage, post 1936 as another three floors have been added (www.picturesheffield.com, s11206).



Plate 19: Brightside and Carbrook Co-operative Society building, Exchange Street frontage, after air raid on 12th/13th December 1940 (www.picturesheffield.com, s01212 - © Sheffield Newspapers).

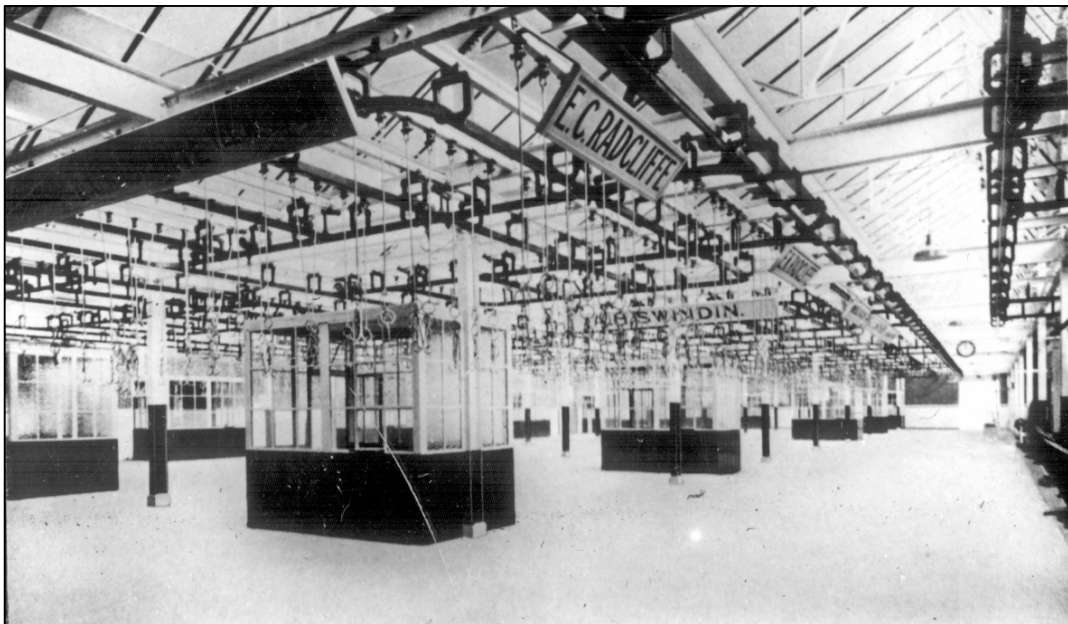


Plate 20: Interior of Castle Hill Market showing the square acre meat market (www.picturesheffield.com, w00572).



Plate 21: Castle Hill Market, vehicle entrance from Waingate, taken 9th May 1930 (www.picturesheffield.com, y02887).



Plate 22: Scrivens Opticians, 36-40 Waingate, looking E (photo 4/382).



Plate 23: Bull and Mouth Public House (now Tap and Barrel), 42 Waingate, taken 10th February 1982 (www.picturesheffield.com, s21924 - © Sheffield Newspapers).



Plate 24: Alexandra Hotel, at the junction of Castlegate and Exchange Street, taken 25th January 1979 (www.picturesheffield.com, s22233 - © Sheffield Newspapers).



Plate 25: Former South Yorkshire Passenger Transport Office, Exchange Street (photo 4/367).



Plate 26: The Market Tavern and Mudfords Building, Exchange Street (photo 4/370).



Plate 27: Low Block, part of the 1958-61 redevelopment works (photo IMG 5532 supplied by SCC).



Plate 28: The 'High Block', part of the 1958-61 redevelopment works (www.picturesheffield.com, s02016).



Plate 29: East Loading Dock, looking NW (photo 4/348).



Plate 30: Former Sheffield Transport canteen building, Castlegate frontage (photo IMG 5552 supplied by SCC).



Plate 31: Buildings forming Phase 5 Market extension, looking N (photo 4/380).



Plate 32: Spiral ramp at north end of East Loading Dock, looking S (photo IMG 5550 supplied by SCC).



Plate 33: 1972 retaining wall on south side of Castlegate, with North Loading Dock above (photo 4/388).

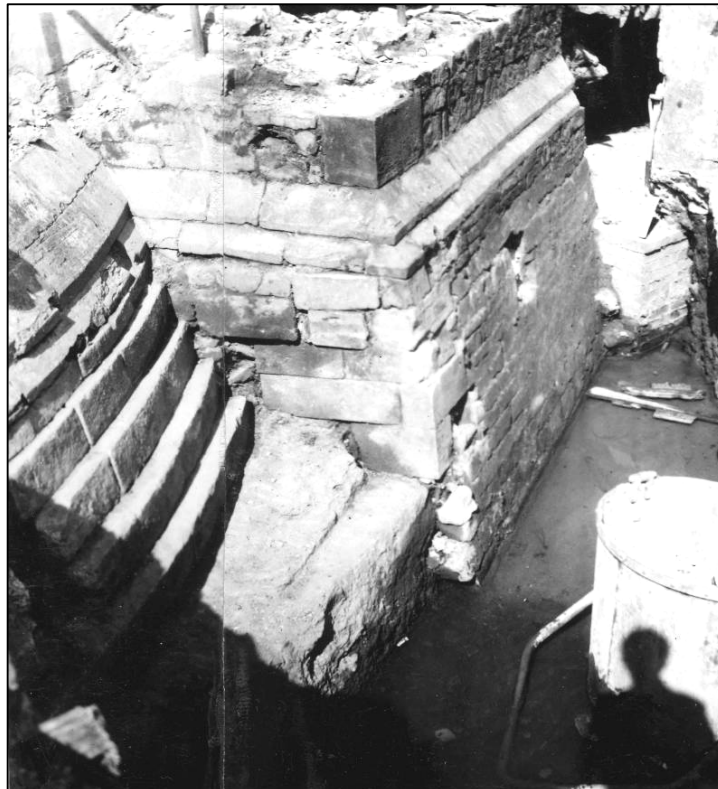


Plate 34: Western bastion tower and gatehouse structure (MSA Box file - Butcher 1976.1064 Sheffield Castle Notes/Photographs folder SC2/3).



Plate 35: Detail of gatehouse structure (MSA Box file - Butcher 1976.1064 Sheffield Castle Notes/Photographs folder SC2/3).



Plate 36: Detail of western bastion tower (MSA Box file - Butcher 1976.1064 Sheffield Castle Notes/Photographs folder SC2/3).



Plate 37: "H 2-4 from E. Drawbridge pier, ashlar face, E" (MSA Box file - Butcher 1976.1064 Sheffield Castle Notes/Photographs folder SC2/3).



Plate 38: Oldest Furnace in Sheffield, on site of Sheffield Castle, October 1928 (www.picturesheffield.com, s10000).



Plate 39: *Ex situ* masonry recorded behind Chandlers Row retaining wall, photographed by J B Himsworth, October 1930 (www.picturesheffield.com, y00900).



Plate 40: View taken after both Chandlers Row and Shambles Lane buildings had been demolished, leaving only the high south retaining wall to Chandlers Row still standing, looking W (photo 2/673).



Plate 41: Stepped bank on south side of Castlegate created by cutting back behind the former retaining wall to Chandlers Row (photo 2/683).



Plate 42: "Dry spars from moat A, 4 May 1958" (MSA 1995.88 Sheffield Castle 1958-63).



Plate 43: The 'comparatively late rough wall' built across the moat between the gate and drawbridge structures (MSA: Butcher b/w prints).



Plate 44: Subsidiary ditch or moat, revealed in section on north side of Exchange Street (MSA: Butcher b/w prints).

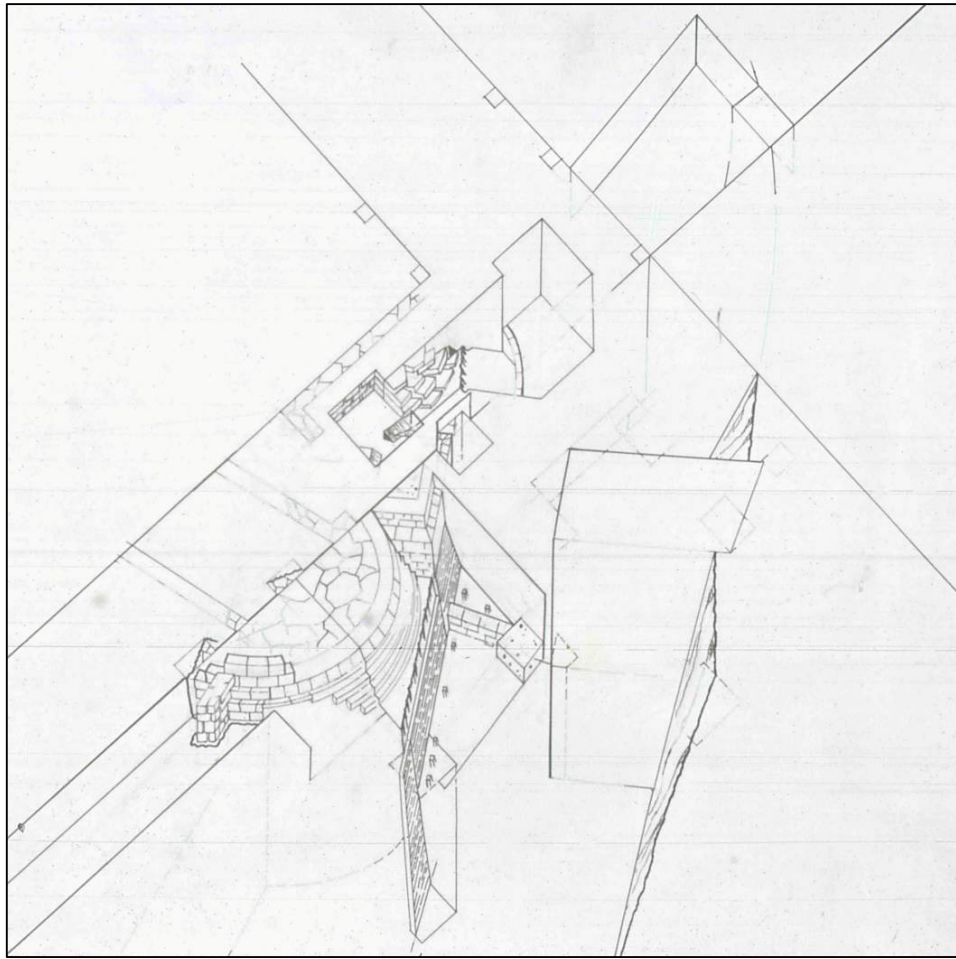


Plate 45: One of Butcher's isometric drawings of the gate structures (MSA: 1995.88 Sheffield Castle 1958-63 colour slide).



Plate 46: Collapsing paving covering the steep north-facing slope to Castlegate, photographed by Pauline Beswick, May 1972 (MSA Box file - Sheffield Castle Project File) (photo 3/884).

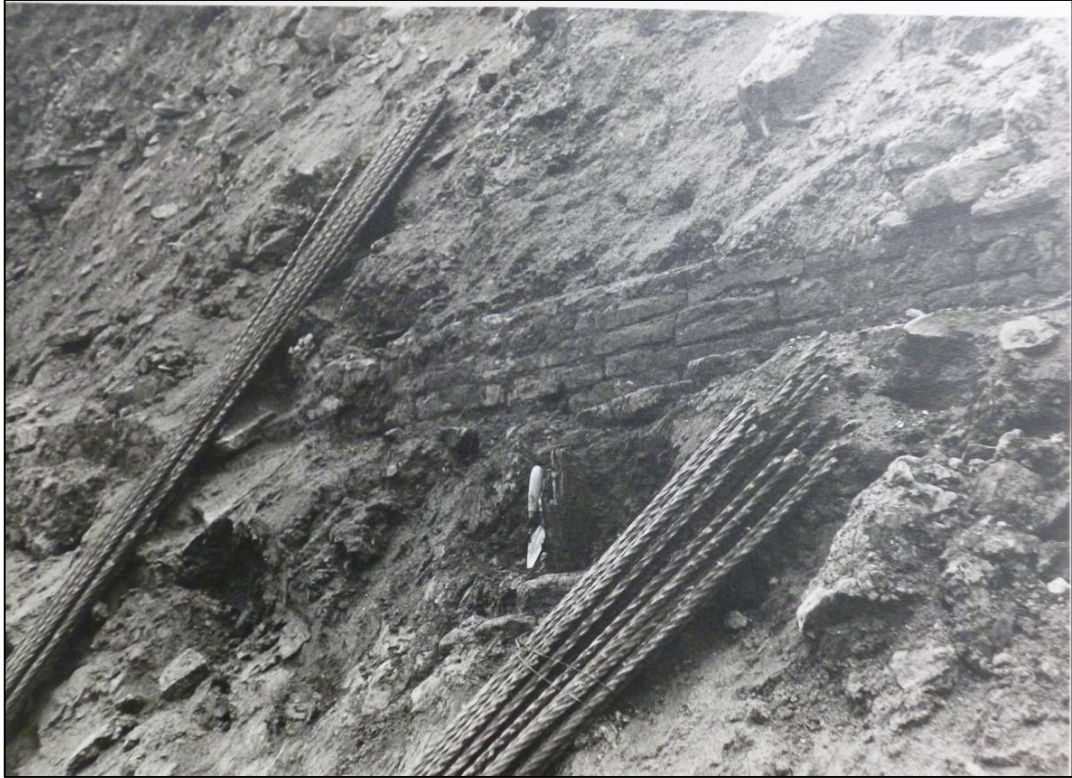


Plate 47: Revetment wall in steep north-facing slope to Castlegate, photographed by Pauline Beswick, May 1972 (MSA Box file - Sheffield Castle Project File) (photo 3/888).



Plate 48: Remains of gate structures in underground chamber, November 2013 (photo 5/645).



Plate 49: Remains of courtyard buildings in underground chamber, August 1975
(www.picturesheffield.com, s29251- © Sheffield Newspapers).



Plate 50: Remains of courtyard buildings in underground chamber,
October 2013 (photo 4/333).