



Plate 1: Section of the Dent 1846 tithe map, showing the area of survey (WYAS(S) BD114).



Plate 2: Section of the Dent 1846 tithe map, showing Stone House hamlet (WYAS(S) BD114).



Plate 3: Section of the Dent 1859 enclosure map, showing the northern watercourse crossing Brant Side and Stone House Brow (WYAS(W) A18).



Plate 4: Section of the Dent 1859 enclosure map, showing the southern culverted watercourse from Scale Gill Bridge and the various feeder becks (WYAS(W) A18).

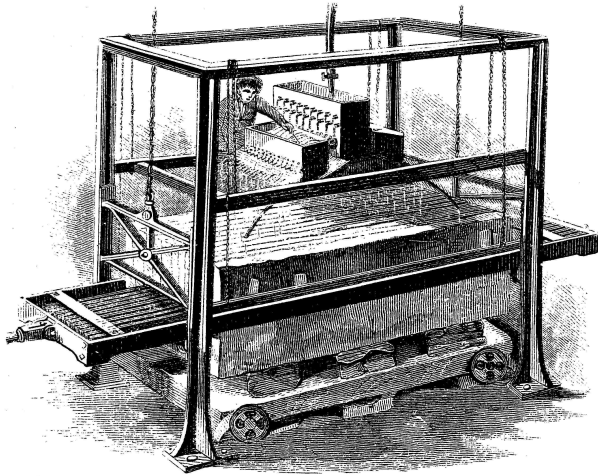


Fig. 1384. HORIZONTAL SAWING MACHINE.

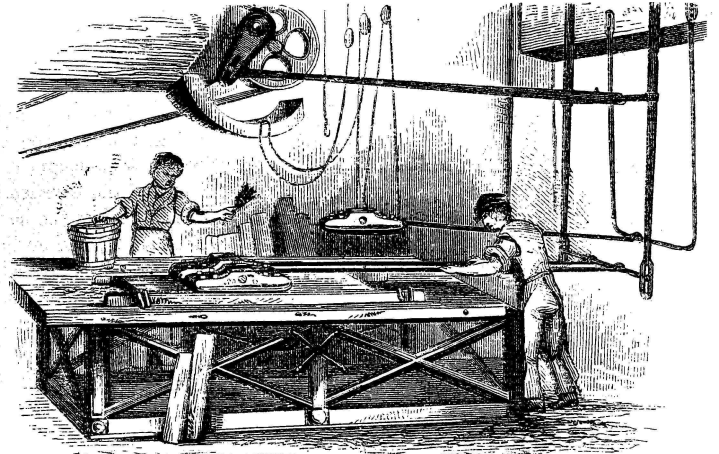


Fig. 1392. POLISHING BED.

Plate 5: Examples of 19th century marble working machinery – a horizontal sawing machine (left) and a polishing bed (right) (Tomlinson c.1860, 228 & 231).

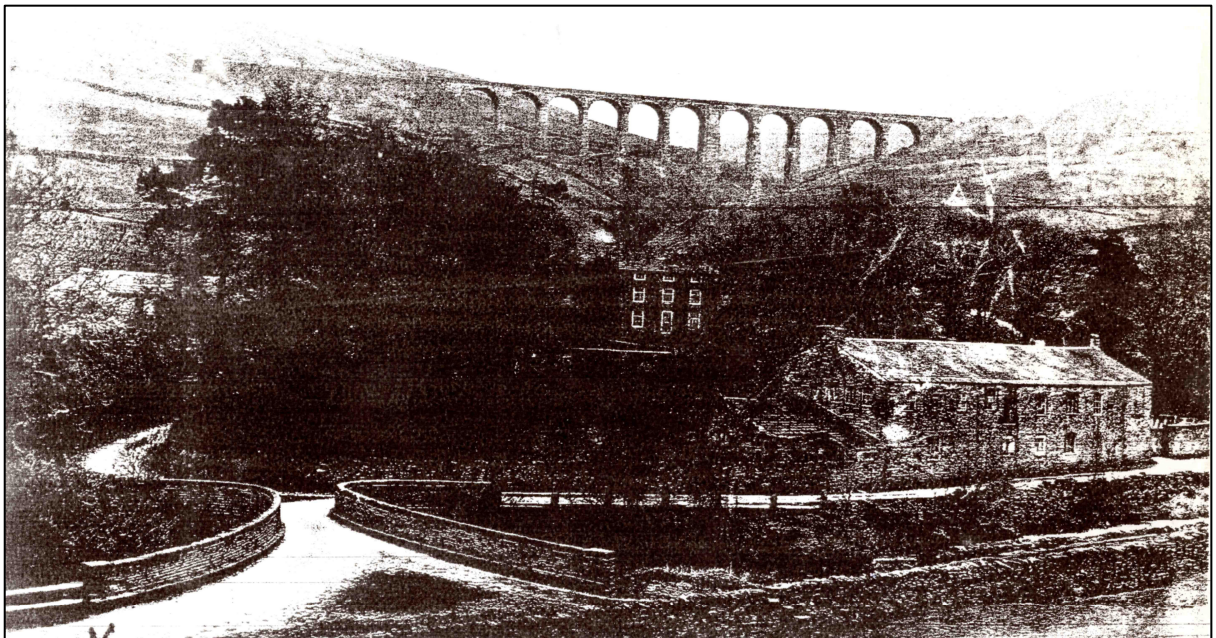


Plate 6: Late 19th/early 20th century photograph showing the Low Mill (Site 11) and Stonehouse (Site 9), with the Artengill Viaduct in the background (courtesy S Richardson, Stonehouse Farm).



Plate 7: General view of Stone House hamlet, looking north-west.



Plate 8: Upper section of Brant Side watercourse (Site 31), looking north.



Plate 9: Entrance to underground watercourse (Site 33), adjacent to Scale Gill Bridge, looking north.



Plate 10: Base for pillar and entrance to culvert to reservoir (Site 8), adjacent to Arten Ghyll Cottage bridge, looking north-west.



Plate 11: View up the Artengill Beck, showing butters (Site 4) on the left and the stone pillars (Site 3) behind, looking north-east.



Plate 12: General view of the marble works reservoir (Site 8), looking north-east.



Plate 13: Remains of the west gable of High Mill (Site 7), looking north.



Plate 14: West elevation of Stonehouse (Site 9), looking east.



Plate 15: Remains of the Low Mill wheelpit (Site 11), looking north-west.



Plate 16: Stonehouse Farm house (Site 12a), looking north-west.





Plate 17: South elevation of north-west range at East Stonehouse (Site 16b), looking north.



Plate 18: Stonehouse Bridge (Site 18), looking south-east.



Plate 19: Ruined field barn in Jean Fields (Site 24), looking north-west.



Plate 20: Ruined field barn in Jean Fields (Site 25), looking north-west.