

Photo 2/17: South aisle turret, looking SW.

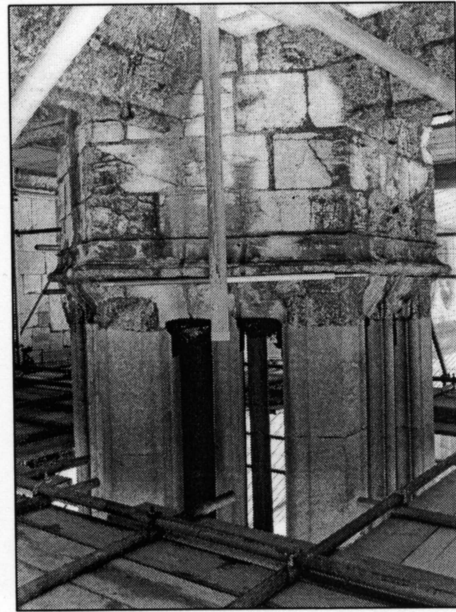


Photo 2/18: North aisle turret, looking SE.

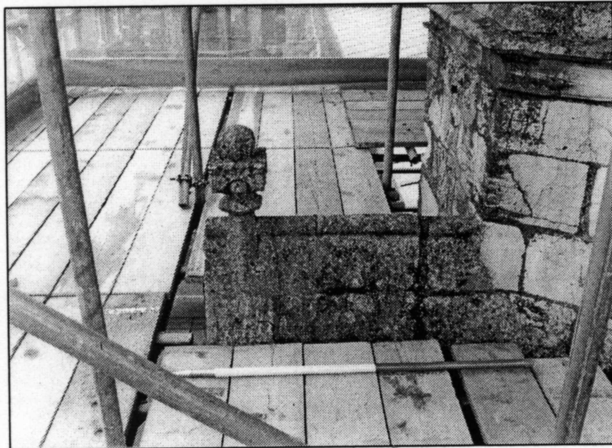


Photo 3/1: Detail of buttress gable, north aisle turret, looking E.

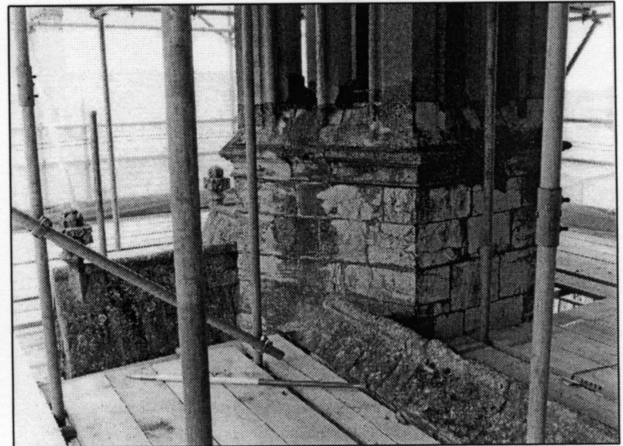


Photo 3/2: Base of north aisle turret, looking N.

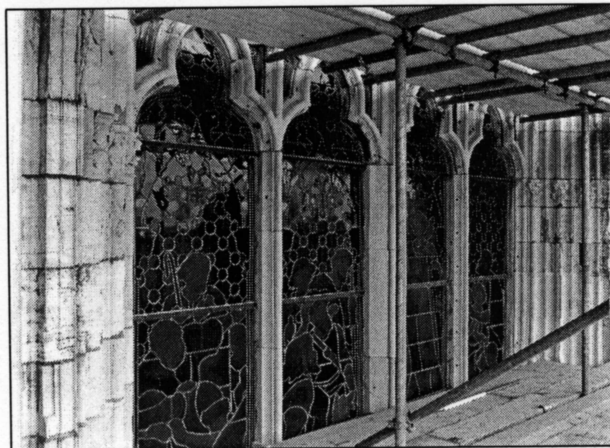


Photo 3/3: Four lights, west window, looking S.



Photo 3/5: Blind arcading, north side of west window, looking NE.



Photo 3/6: North jamb of west window, looking NE.



Photo 3/7: North aisle turret, central ring.



Photo 3/8: South aisle turret, looking S.

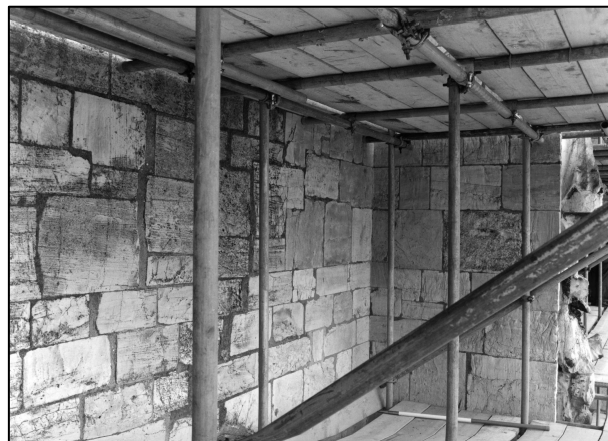


Photo 3/9: Possible joint, north aisle, looking S.



Photo 3/11: Canopy over figure, north nave buttress, looking N.



Photo 3/12: Figure, north nave buttress, looking N.



Photo 3/13: Canopy and figure, south nave buttress, looking N.



Photo 3/15: North jamb of west window, looking N.



Photo 3/14: Perpendicular transom, west window, looking NE.



Photo 3/17: North aisle window head, looking SE.





Photo 3/18: Base of figure, north nave buttress, looking N.



Photo 4/2: Lower part of west window, looking NE.

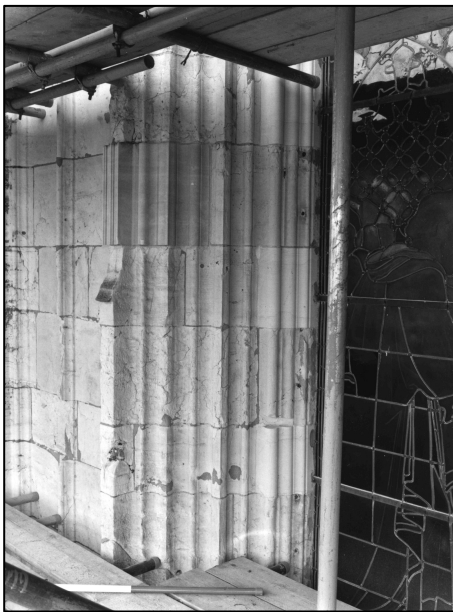


Photo 4/1: North jamb of west window, looking NE.



Photo 4/4: Base of figure, south nave buttress, looking N.

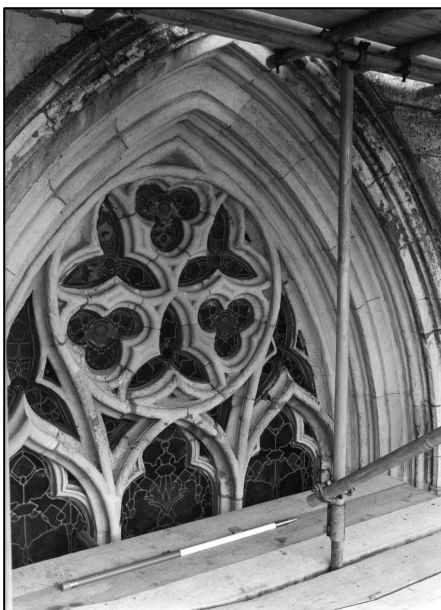


Photo 4/5: South aisle window head, looking SE.



Photo 4/6: Putlogs and winged figure corbel to south aisle turret, looking E.



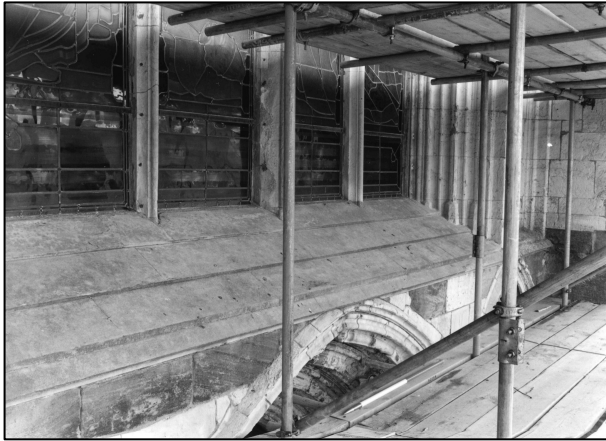


Photo 4/8: Sill of west window, looking SE.



Photo 4/10: Blind arcading on south side of west door, looking E.



Photo 4/7: Joint between south aisle and grammar school, looking SE.



Photo 4/13: Blind arcading on north side of west door, looking NE.



Photo 4/11: Sill and south jamb of south aisle window, looking S.



Photo 4/12: Head of west door, looking S.



Photo 4/14: Detail of moulding to north side of west door, looking NE.



Photo 4/17: Sill of south aisle window, looking NE.

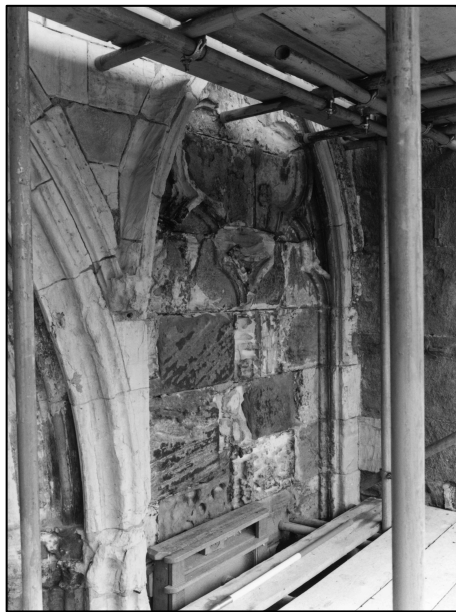


Photo 4/16: Blind arcading on south side of west door, looking SE.



Photo 4/18: Joint between south aisle and grammar school, looking SE.



Photo 5/1: South jamb of west door.



Photo 5/3: North jamb of west door.