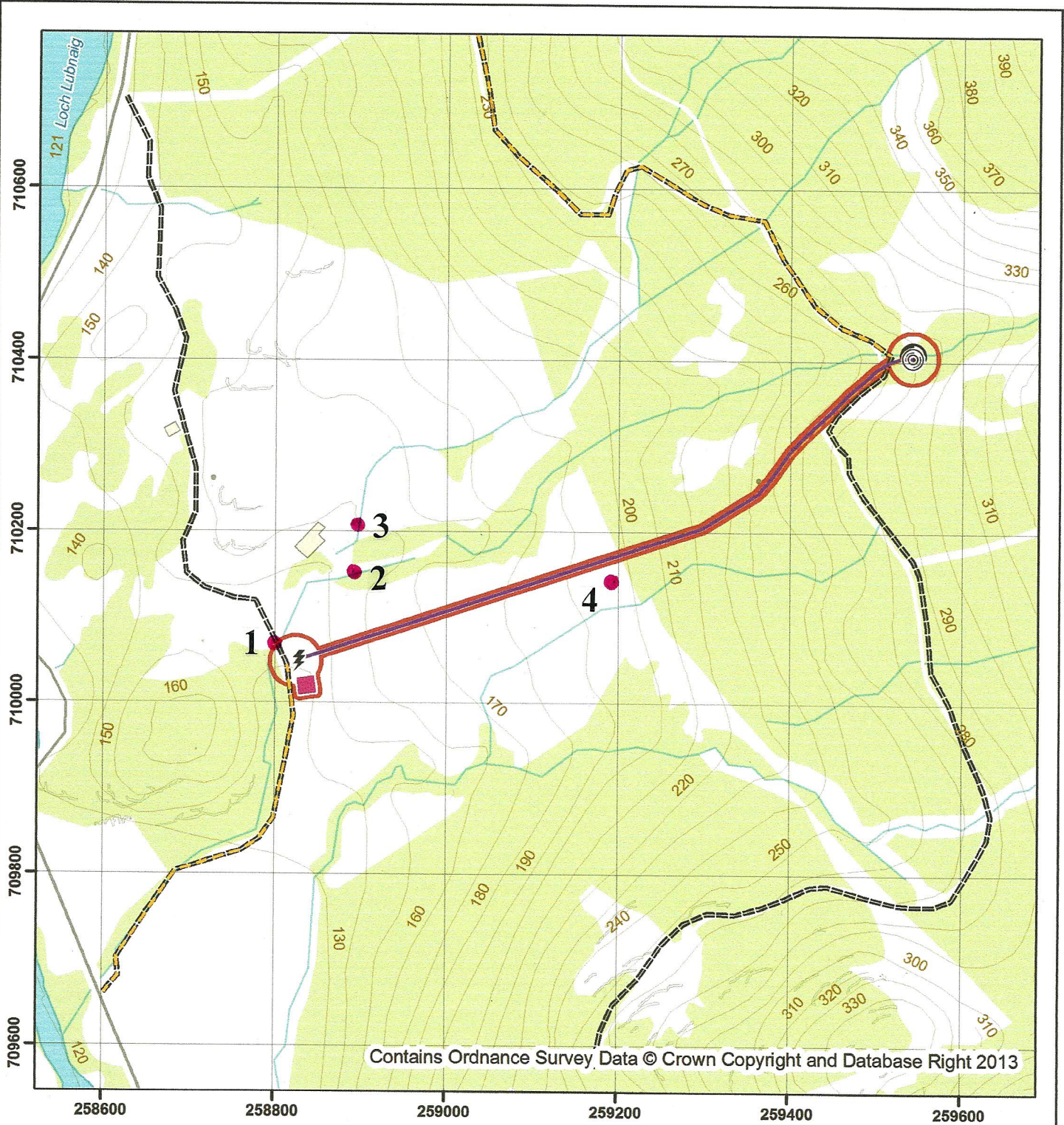


Anie Hydropower Development: General Layout



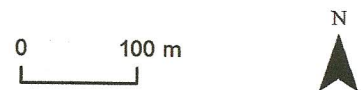
Legend

Proposed scheme

- ⊙ Intake
- ⚡ Turbine
- Penstock (buried)
- Proposed scheme selection

Access

- - - Development access
- - - Existing Track
- Development Corridor
- Construction Compound



Client: Neil Cameron
Drawing date: 29/07/2013



MNV
Consulting Ltd.

Stirling Road
Callander
FK17 8LE
Tel: 01877 331080
info@MNVconsulting.eu
www.MNVconsulting.eu