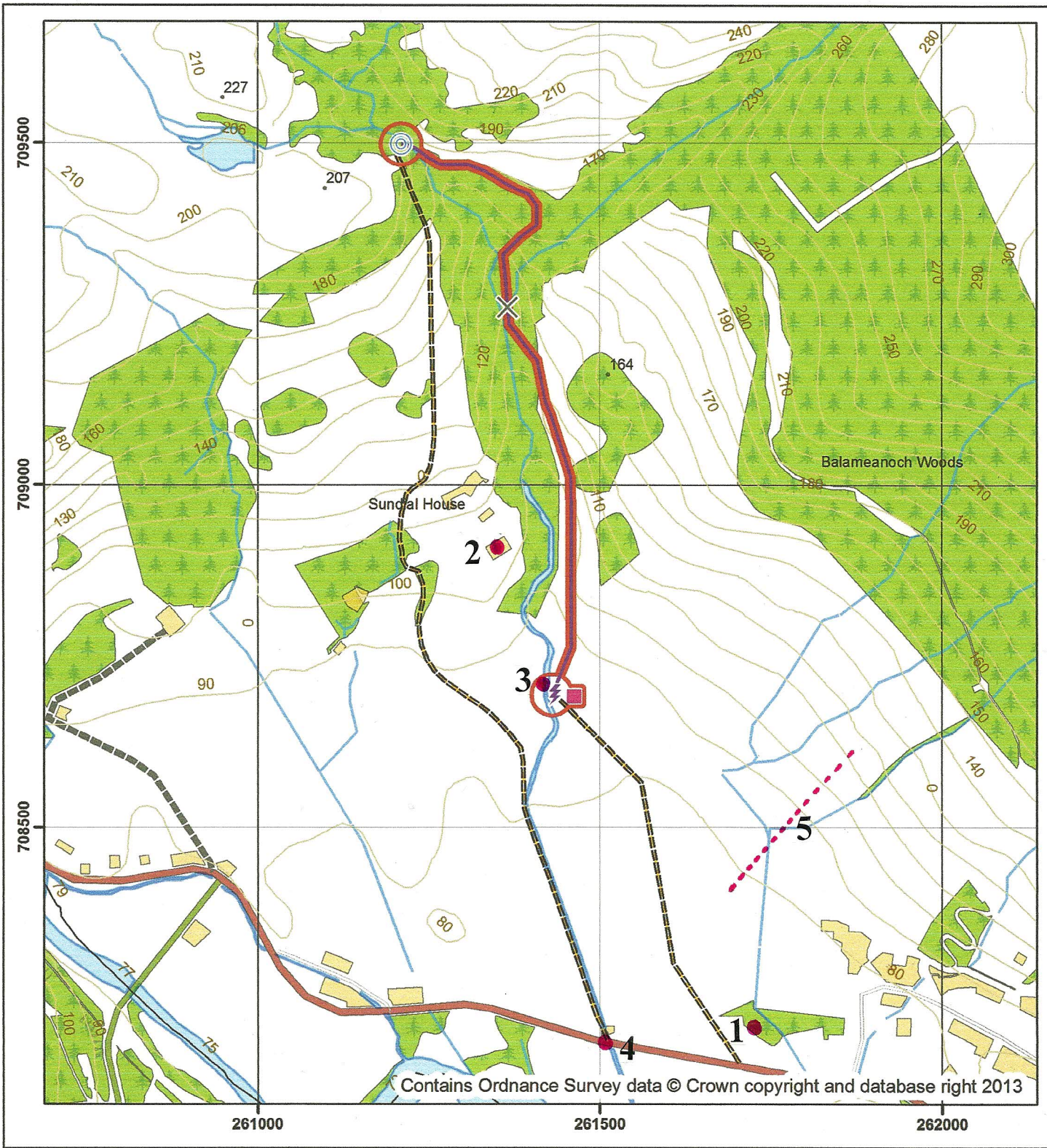










Leny Hydropower Development: General Layout



Legend

-  Intake
-  Turbine House
-  Pipe bridge
-  Penstock
-  Construction Corridor
-  Construction Compound
-  Existing track
-  Development access

0 100 m



Client: Neil Cameron
Drawing date: 30/07/13



Stirling Road
Callander
FK17 8LE
Tel: 01877 331080
info@MNVconsulting.eu
www.MNVconsulting.eu