

# Scotia Archaeology

REPORT  
TO  
SCOTTISH & SOUTHERN ENERGY

EARTH CABLE TRENCH  
AT  
KILNINVER,  
ARGYLL

ARCHAEOLOGICAL  
WATCHING BRIEF  
APRIL 2015

*Lismore  
Dollerie Terrace  
Crieff  
Perthshire  
Tel: 01764-652638  
email: [scotarc@btinternet.com](mailto:scotarc@btinternet.com)*

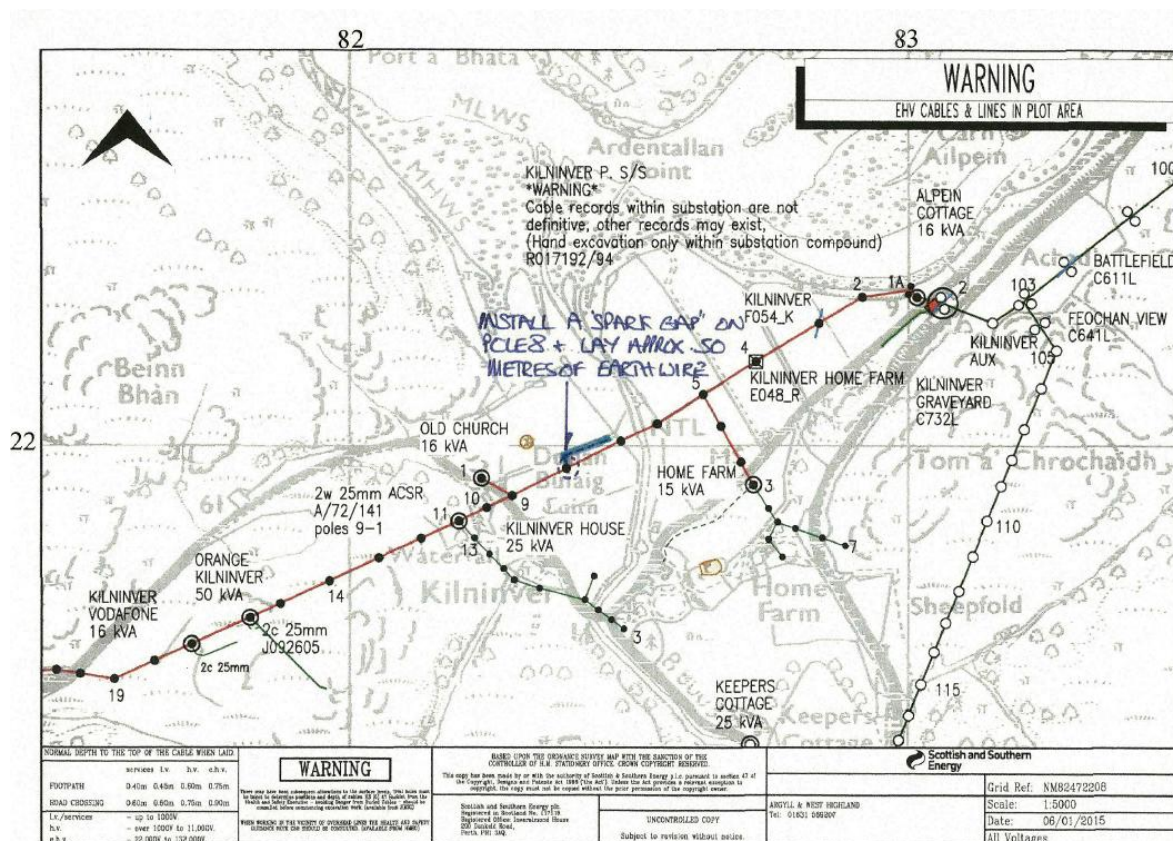
## INTRODUCTION

This report describes the results of an archaeological watching brief undertaken in April 2015 for Scottish & Southern Energy plc (SSE) during the excavation of a trench to accommodate an earth cable at Kilninver, Argyll.

The trench was close to the prehistoric burial cairn of Dunan Buiaig, a Scheduled Ancient Monument. As a consequence, Argyll & Bute Council, on the advice of the West of Scotland Archaeology Service (WoSAS), imposed a condition whereby an archaeological watching brief be implemented during trenching.

## THE SITE

Kilninver is a hamlet located at the mouth of Loch Feochan, a sea loch, and some 10km south of Oban. The location of the site is shown on the map below, supplied by SSE. The earth cable trench is highlighted in blue.



*Location map of site*

Dunan Buiaig now comprises the badly eroded remains of a cairn located at NM 8232 2200, within a level field near the mouth of the River Euchar. Evidently, the cairn was severely robbed for building materials circa 1810 when workmen discovered a cremation urn which is now lost. The cist is no longer visible and the cairn now covers an area of 25m by 20m and is 1m high although its dimensions were probably greater originally.

The cairn's Scheduled Ancient Monument number is SAM3996; the monument number attributed to it by the Royal Commission on the Ancient and Historical Monuments of Scotland (RCAHMS) is NM82SW 17. The cable trench was located some 100m from Dunan Buaig in an area where there could conceivably be satellite burials, the trench's proximity to the monument prompting the watching brief. The site is also close to the former location of a standing stone (NM82SW 13) which once stood on the bank of the Euchar at NM 8250 2207 but which has since been removed. In addition, Kilninver was the site of the Church of Saint Bean (SAM4191; NM82SW 20), built in the 13th century at NM 8265 2178, some 300m south-east of the cable trench.



*Dunan Buaig viewed from the south*

## **THE WATCHING BRIEF**

The watching brief was undertaken by John Lewis of Scotia Archaeology on 3 April 2015, a mild, misty day. Trenching was undertaken using a small mechanical excavator operated by EDM Plant Hire and Contractors, on behalf of SSE. The trench ran north-eastwards from Pole 8 on an overhead power line that runs to Seil Island.

Pole 8 stands at NM 82388 21979, on the edge of a small channel which drains into the River Euchar. The earth cable trench ran from the base of the pole, below a fence which defines the south-east side of the field before running north-eastwards, parallel with the fence and drain, as far as NM 82425 21996. The overall length of the trench was some 60m. The field through which it was excavated is relatively level and provides reasonably well drained pasture.



*Dunan Builaig viewed from the south-west with Pole 8 on the right*



*Earth cable trench viewed from the south-west*

The trench measured 0.4m wide and 0.4m deep. It cut through 0.2-0.3m of mid-brown, gravelly loam which gave onto orange-brown silt, gravel and pebbles of fluvio-glacial origin.

No structures, features or deposits of archaeological significance were uncovered within the trench and no artefacts retrieved from it.

## **CONCLUSIONS**

Nothing of archaeological interest was found during the watching brief although trenching nearer Dunan Builg might well reveal features associated with that monument.