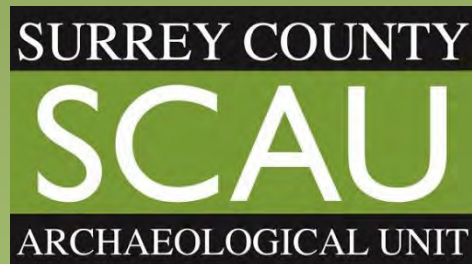


GROUNDWORKS FOR THAMES WATER, AT THE LONG WALK, WINDSOR GREAT PARK, WINDSOR

A Watching Brief Report



**GROUNDWORKS FOR THAMES WATER,
LONG WALK WINDSOR GREAT PARK, WINDSOR**

An archaeological watching brief

Summary

The excavation of a series of pits for the placement of a new water main to Windsor Castle were observed for archaeological material and features. All pits excavated revealed a broadly similar stratigraphy with topsoil and subsoil, including variable amounts of modern disturbance overlying a natural substrate of London Clay at 1.2-1.75m below ground level.

No finds or features of archaeological interest were identified and it is recommended that no further archaeological involvement is required in respect of the development.

Surrey County Archaeological Unit
Surrey History Centre, 130 Goldsworth Road,
Woking, Surrey, GU21 6ND
Tel: 01483 518777 Fax: 01483 518780
email: archaeology.scau@surreycc.gov.uk

website: www.surreycc.gov.uk/SCAU

Checked by	Rob Poulton
Author	Matt Saywood
Dates of fieldwork	Oct 2017 – Jan 2018
Date of report	February 2018
NGR	N end 49706;17662 S end 49698;17584
Post code	SL4 1UT
Site code	WLW17
Client	Thames Water



The material contained herein is and remains the sole property of the Surrey County Archaeological Unit and is not for publication to third parties, without the prior written consent of Surrey County Council, otherwise than in pursuance of the specific purpose for which it was prepared

CONTENTS

List of figures	2
List of Appendices.....	2
1 Introduction	2
2 Methodology	2
3 Results.....	2
4 Conclusions and recommendations	5
5 References.....	6
6 Appendices	12

LIST OF FIGURES

Fig 1 Windsor Thames Water Pipeline. General location map

Fig 2 Windsor Thames Water Pipeline. Location of Long Walk in relation to Windsor town and castle

Fig 3 Windsor Thames Water Pipeline. Plan of Long Walk showing location of detailed plans (figs 4-6) with test pit locations

Fig 4 Windsor Thames Water Pipeline. Proposed development and observation locations South

Fig 5 Windsor Thames Water Pipeline. Proposed development and observation locations Central

Fig 6 Windsor Thames Water Pipeline. Proposed development and observation locations North

LIST OF APPENDICES

Appendix 1 Images of individual excavations

1 INTRODUCTION

- 1.1 Thames Water is undertaking exploratory groundworks ahead of replacing an existing water main running alongside Long Walk Windsor Great Park, (see figs 1-3). The works are being carried out under permitted development rights but the archaeological monitoring is being undertaken due to their obligations under the Water Industry Act 1991 Code of Practice for Conservation, Access and Recreation.
- 1.2 Thames Water consulted with the County Archaeological Officer at Berkshire Archaeology and agreed that an archaeological watching brief should be undertaken to monitor the proposed groundworks which lie within both The Royal Estate Windsor: Windsor Castle and Home Park & Windsor Great Park Grade I listed Historic Park and Gardens
- 1.3 SCAU was commissioned by Thames Water to undertake the archaeological work required. A Written Scheme of Investigation (WSI) was produced by SCAU (Saywood 2017) to outline the form and scope of the work.
- 1.4 The Watching Brief was conducted by Surrey County Archaeological Unit (SCAU) in Oct 2017–Jan 2018 during the excavation of trenches associated with laying of a series of water mains in and around Windsor castle (fig 1).

2 METHODOLOGY

- 2.1 The contractor carried out the majority of excavations by Machine. The WSI (Saywood 2017) gives full details of the excavation and recording methods that were used during the Watching Brief.
- 2.2 The excavations were carefully monitored for the occurrence of features or artefacts of archaeological interest.

3 RESULTS

- 3.1 There were a series of excavations planned, many of which were moved or not dug, and a number of unplanned holes were also excavated. The majority

of these were dug over existing services, some of which had been put in the ground by horizontal drilling so that no cut lines for their insertion were visible. See figures 4-6 for the planned (labelled TH 1-12) and actual excavations (labelled LP1-8 for launch pits, 6(1), 7(1) and 1-Cambridge gate for first phase test pitting and, A1-8.2 for second phase test pitting). See Appendix one for images of all the pits excavated.

- 3.2 The Geological Survey of Great Britain covering this area at scale 1:50,000, shows that the geology underlying the castle itself is an outcrop of Seaford Chalk. A band of Lambeth group clays lies south of the castle. Moving southward and downhill, the Lambeth groups give way to the lower lying London Clay, upon which the majority of excavations were undertaken during this watching brief.
- 3.3 Across the whole site there was a good commonality between pits in terms of stratigraphy, with depths of disturbance or made ground increasing the closer to the castle excavations were undertaken. The general sequence of stratigraphy in most of the excavated pits was as follows:

Context Number	Layer	Description
101	Topsoil	Dark grey, clay sand, 0.15-0.35m deep. Occasional inclusions of clean modern gravels and pockets of modern building rubble.

102	Subsoil	Yellow/grey clay 0.40-1.1m deep. Consistently containing pockets of chalk and modern CBM as well as a general scattering throughout of similar material. This layer becomes significantly deeper with less clay and more CBM, the further north and towards the castle it was examined. All CBM layers contained frogged brick fragments and no pottery, suggesting fairly recent deposition, probably as levelling up of the landscape towards the castle.
103	Natural	Yellow Brown Clay observed in a number of locations at depths between 1.2-1.75m below ground level. It was seen as brown clay, often with chalk inclusions, again chalk was more frequent and consistently present the more northward the excavations went.

3.4 Individual observations relating to the pits

Phase	Pit no.	Photo graph number	Marking in photograph	Size of trench (mm)	Notes
1	TH6	DSC_0924	6	1200 * 500	
1	TH7	DSC_0932	7	1200 * 500	
1	LP1	DSC_0910	None	3500 * 1400	
2	TH1	DSC_1125	A1	2400*500	
2	TH2	DSC_1232	A2	2400*500	
2	TH3	DSC_1237	A3	2300*500	
2	TH4	N/A	N/A	N/A	Not excavated
2	TH5	N/A	N/A	N/A	Not excavated
2	TH6	DSC_1205	6	1500*2000	Unknown service in NE corner
2	TH6.1	DSC_1214	6 1	2700*500	
2	TH7	DSC_1246	A7	2400*500	
2	TH7.2	DSC_1260	A7 2	3000*500	
2	TH7.3	DSC_1288	A7 3	2400*500	
2	TH7.4	DSC_1291	A7 4	2400*500	
2	TH7.5	DSC_1325	A7 5	5000*500	Terrible photo quality
2	TH7.6	DSC_1334	A7.6	3000*500	
2	TH7.7	DSC_1345	A7.7	2400*500	

2	TH7.8	DSC_1359	A7.8	3500*500	
2	TH8	DSC_1350	A8	1500*300	Excavated by Hand
2	TH9	DSC_1356	A8.2	1500*600	Excavated without archaeologist present and backfill started without Archaeologist
2	TH10				
2	TH11				
2	TH12	DSC_1149	1	1300*700	Base of Cambridge Gate
2	LP2	DSC_1193	2	2500 * 1400	
2	LP3	DSC_1218	3	2500*1400	
2	LP4	DSC_1222	4	2500 * 1400	
2	LP5	DSC_1267	5	2500 * 1400	
2	LP6	N/A	N/A	N/A	Excavated on a Saturday with no archaeologist present - stratigraphy covered by temporary works, no observations possible
2	LP7	DSC_1296	7	2500 * 1400	
2	LP8	DSC_1317	8	2500 * 1400	1m of modern building waste before dark clay
2	G1	DSC_1370	G1	1500*500	Su 97136 76251
2	G2	DSC_1375	G2	1500*500	su 97108 76254

4 CONCLUSIONS AND RECOMMENDATIONS

- 4.1 Topsoil and Subsoil overlay the area to a maximum combined depth of 1.45m. No archaeological features were observed and no archaeological material of interest was identified or retained.
- 4.2 It is recommended that there is no need for further archaeological involvement in relation to this development.
- 4.3 The statements and recommendations in 4.1-4.2 are the considered views of the Surrey County Archaeological Unit, based on the evidence presented in the earlier part of this report. It must be emphasised, however, that whether further archaeological work is required, what form it should take and when it

might be scheduled are decisions to be made by the Local Planning Authority (generally acting under the advice of Berkshire County Council's Heritage Conservation Team) and any further action in response to this report should await their opinion.

5 REFERENCES

Saywood, M, 2017 *Groundworks for Thames Water, Long Walk Windsor Great Park, Windsor. Written Scheme of Investigation for an archaeological watching brief*, Surrey County Archaeological Unit Client report

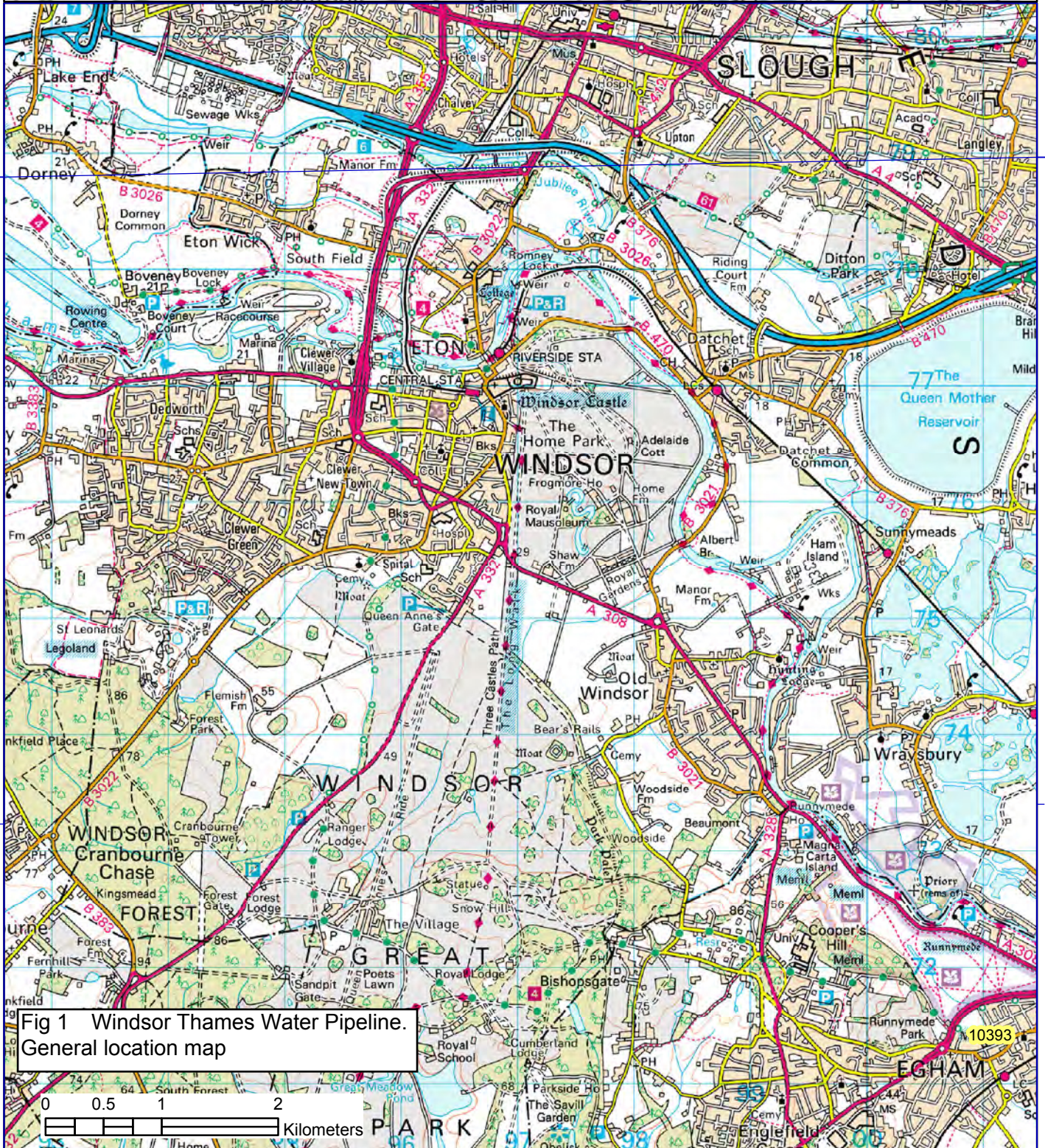
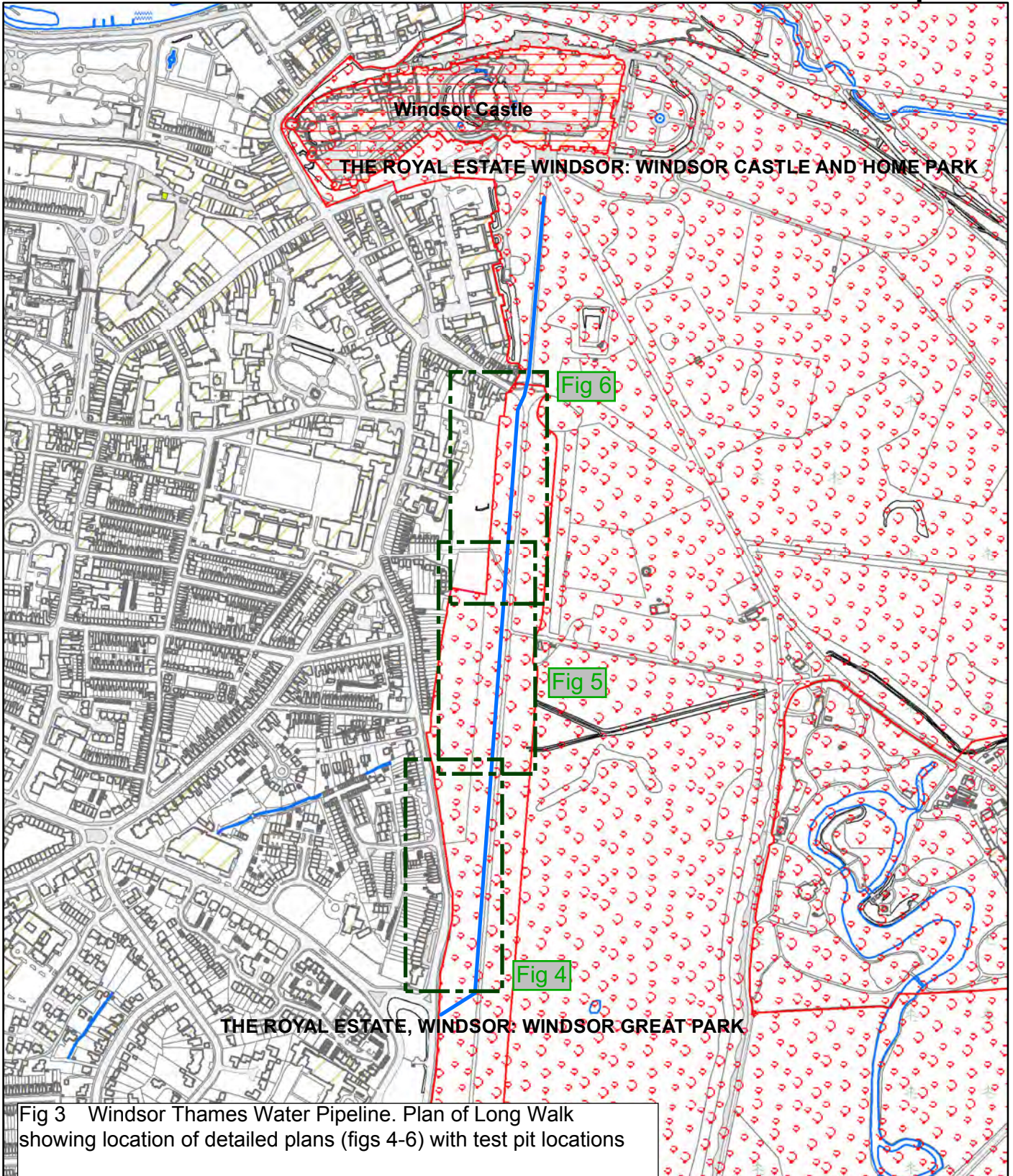


Fig 1 Windsor Thames Water Pipeline. General location map

Long Walk Mains Replacement Works - Historic Park and Garden and Scheduled Monument Map



Thames Water
Map

Printed By : CHALLYBO
 Print Date : 12/10/2017
 Map Centre On : 497032, 176353
 Centre Tile No. : SU9776SW

0 85 170 340 510 680 Meters

Current Scale : 1:7,500

Disclaimer: Based on the Ordnance Survey Map with the Sanction of the Controller of H.M Stationery Office License Number- 100019345

The position of the apparatus shown on this plan is given without obligation and warranty, and the accuracy cannot be guaranteed.

Service pipes are not shown but their presence should be anticipated. No liability of any kind whatsoever is accepted by Thames Water for any error or omission. The actual position of mains and services must be verified on site before any works are undertaken.

Copyrights: Unauthorised reproduction prohibited. Crown Copyright Reserved.



Legend

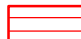


-  Scheduled Monuments
-  Registered Historic Parks & Gardens
-  Route of New Main



Fig 4 Windsor Thames Water Pipeline.
Proposed development and observation locations South.
Plan showing:
LP1, LP2 and LP3

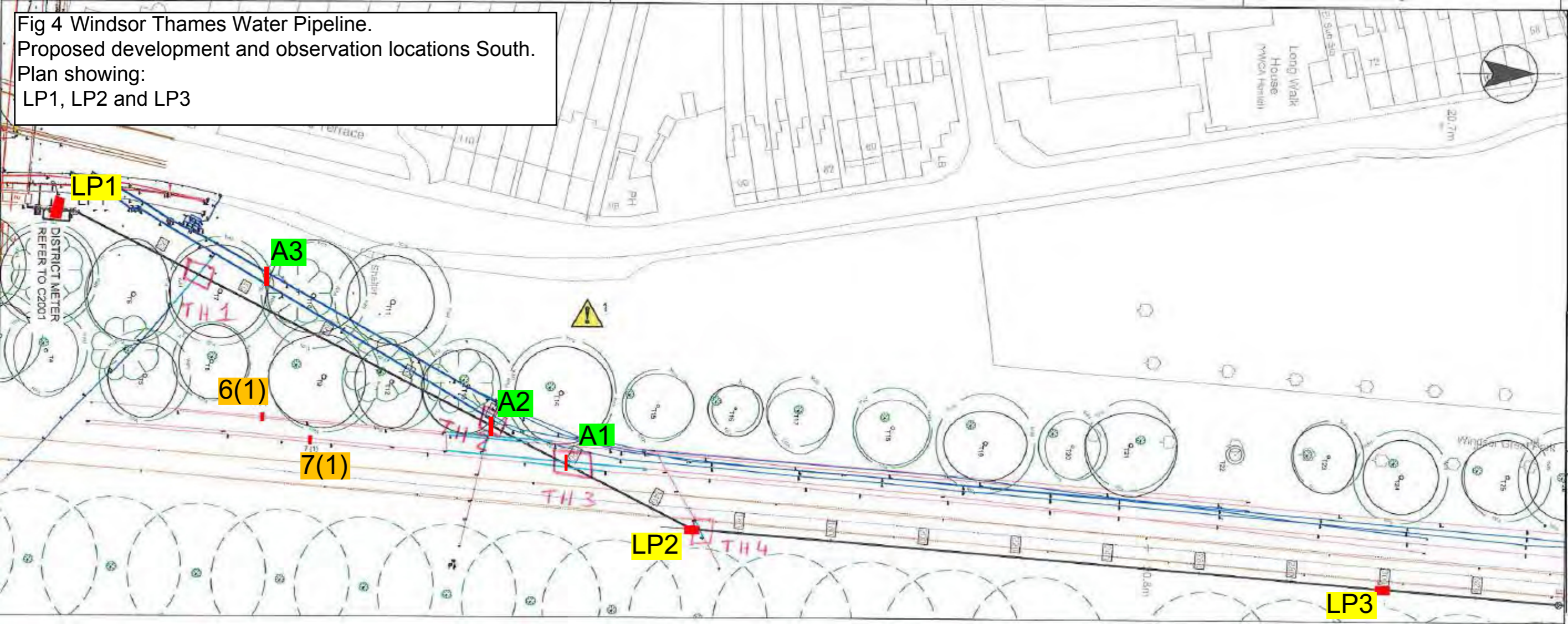


Fig 5 Windsor Thames Water Pipeline.
Proposed development and observation locations Central
Plan showing:
LP3, LP4, LP 5 and LP6.
6 ad 6.1
A7, A7.2, A7.3, A7.4, A7.5, A7.6, A7.7, A7.8, A8 and 8.2

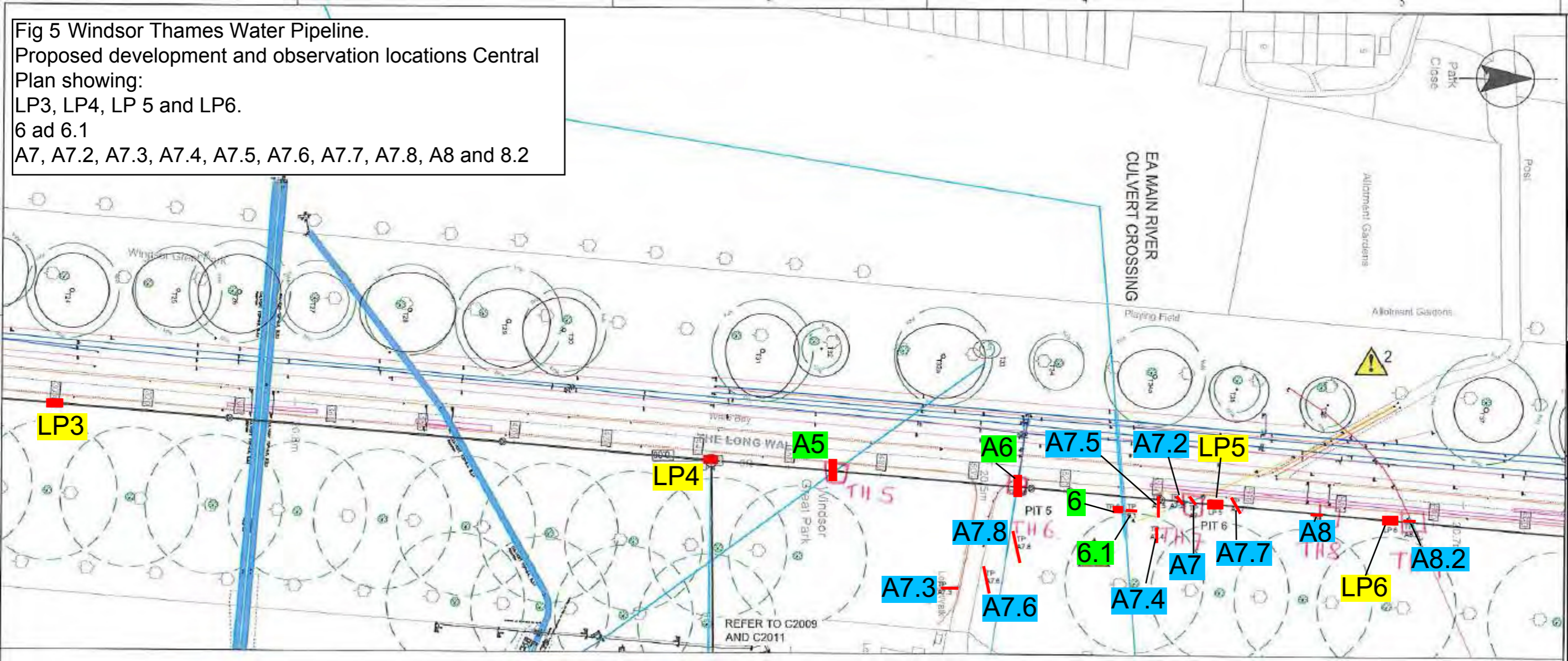
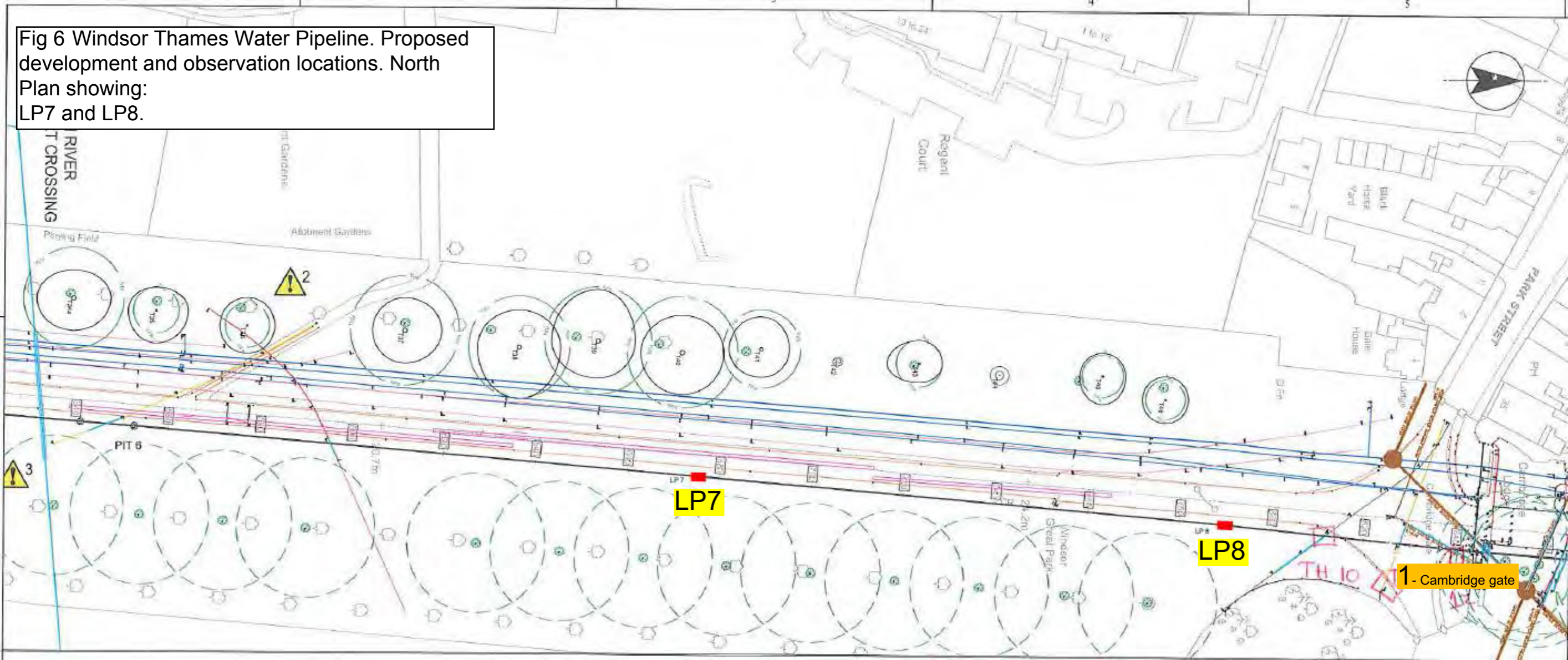


Fig 6 Windsor Thames Water Pipeline. Proposed development and observation locations. North Plan showing: LP7 and LP8.



Appendix 1 Images of individual excavations



LP1



LP2



LP3



LP4



LP5



LP7



LP8



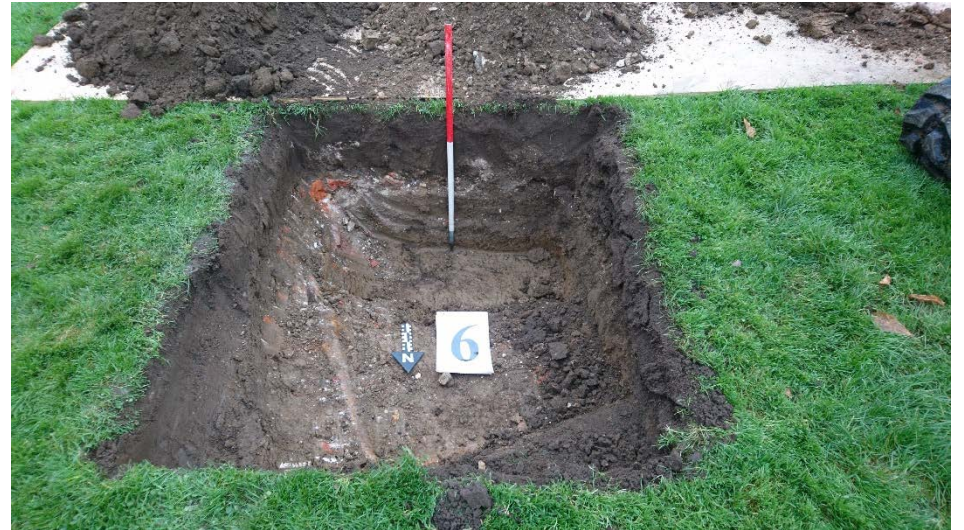
6 (1)



1- Cambridge Gate



7(1)



6



6.1



A1



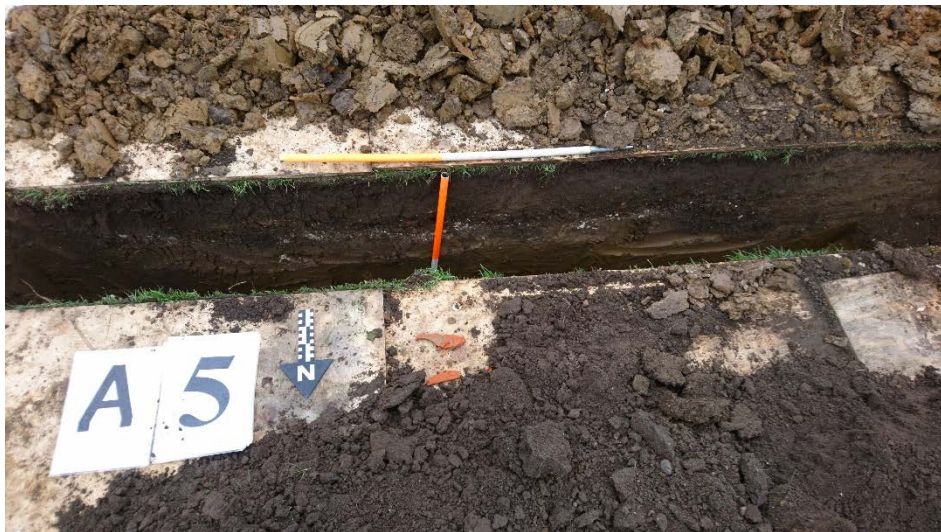
A2



A3



A6



A5



A7



A7.2



A7.3



A7.4



A7.5



A7.6



A7.6



A7.7



A8



A7.8



A8.2