
149-157 WESTGATE ROAD/
35-39 ST. JAMES BOULEVARD,
NEWCASTLE UPON TYNE

ARCHAEOLOGICAL ASSESSMENT

APRIL 2004



Prepared for: <i>The Jesmond Group Ltd</i>	By: <i>The Archaeological Practice Ltd.</i>
---	--

<i>Project code:</i> AP03/26	<i>Stage:</i> Final	<i>Compiled by:</i> RJC	<i>Control:</i> AR	<i>Completion date:</i> 02/04/04
---------------------------------	------------------------	----------------------------	-----------------------	-------------------------------------

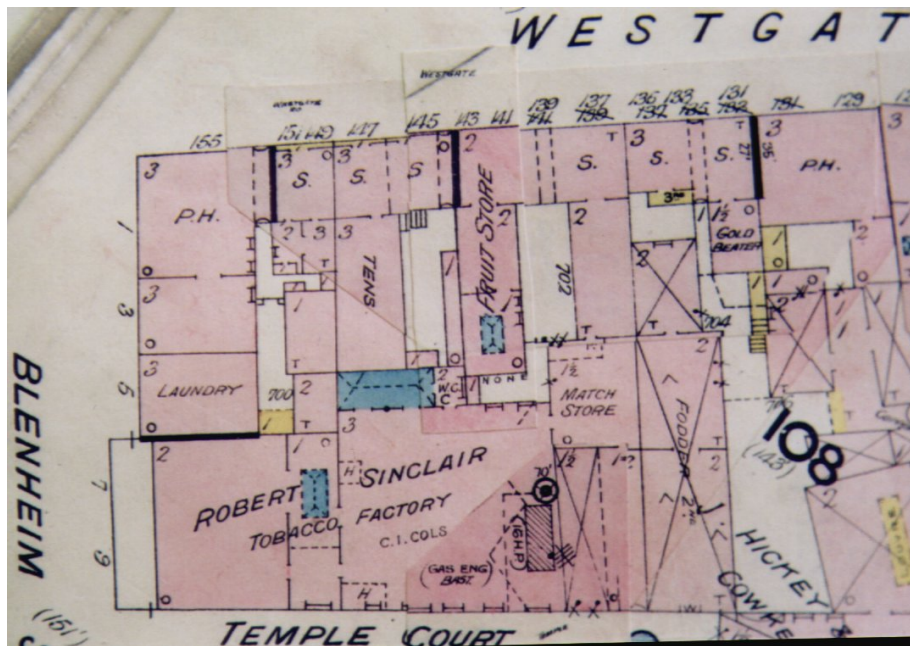
Registered Office: 34G Clayton Street West, Newcastle upon Tyne, NE1 5DZ
Telephone: 0191 2228130; FAX: 0191 2227809; E-mail: r.j.carlton@ncl.ac.uk
Registered Company no. 4549772

149-157 WESTGATE ROAD/
35-39 ST JAMES BOULEVARD,
NEWCASTLE UPON TYNE

Photographic Recording

Report prepared by

The Archaeological Practice Ltd.



Frontispiece: Extract from Goad's Insurance Plan, 1896

CONTENTS

SUMMARY

1. INTRODUCTION
2. HISTORIC SOURCES
3. PHOTOGRAPHIC RECORDING
4. CONCLUSIONS
5. REFERENCES
6. APPENDIX OF PHOTOGRAPHS

ILLUSTRATIONS

Cover: The Blenheim Street frontage, 1866

Frontispiece: Extract from Goad's Insurance Plan, 1896

Illus. 1: Extract from First Edition Ordnance Survey Plan, showing site location

Illus. 2: The Blenheim Street frontage, 1866 (from TWCA plan T186/1954)

Illus. 3: The Westgate Road frontage, 1866 (from TWCA plan T186/1954)

Illus. 4: Cross-section of Blenheim Street frontage, 1866 (from TWCA plan T186/1954)

Illus. 5: The Blenheim Street frontage, 1886 (from TWCA plan T186/116654a)

Illus. 6: The Westgate Road frontage, 1886 (from TWCA plan T186/116654a)

Illus. 7: North and West elevations, November 1886 (from TWCA plan T186/11799)

Illus. 8: Cross-section of building, 1896 (from TWCA plan T186/16913)

Illus. 9: Location Plan, 1928 (from TWCA plan T186/116654b)

Illus. 10: Building Plans, 1928 (from TWCA plan T186/116654b)

Illus 11: Outline plan of buildings complex

SUMMARY

This report provides background to a programme of recording carried out on buildings at the corner of Westgate Road and St James Boulevard (formerly Blenheim Street), Newcastle upon Tyne. The buildings have been abandoned for many years but formerly served as a public house, the Carlisle Pub, shops and residential units. Although surviving in an extremely poor state, the west and north facing facades retain their most significant original features, notably polychromatic brickwork and, at ground level, modestly decorative frontages, including doorways.

In addition to a catalogue of photographs provided as a permanent record of the buildings complex, the report provides a brief summary of sources available for charting its historic development and includes a number of historic plans and elevations drawn from archival sources.

1. INTRODUCTION

1.1. Purpose of Recording

Proposals for the redevelopment of the corner site incorporating 149-157 Westgate Road and 35-39 St James Boulevard include the demolition of all existing structures, including the former Carlisle Public House. A specification for archaeological recording produced by the Tyne and Wear County Archaeologist in 2003 briefly charted the history of the buildings and identified a number of surviving architectural elements of known and potential importance, including decorative polychromatic brickwork, stained glass, moulded surrounds and sash windows. A subsequent archaeological assessment of the site carried out by ASUD in 2002 provided a recommendation for architectural recording work to be carried out in mitigation of the anticipated loss to the cultural heritage of the area. A requirement for such work was imposed as a requirement for planning consent by the relevant authorities.

This report, prepared by The Archaeological Practice Ltd., was commissioned by The Jesmond Group in order to address the primary recording phase of mitigation works upon the site, the purpose of which is to provide a permanent record of the buildings complex.

In addition to recording significant internal and external features of the complex, the brief supplied by the archaeological officer stipulates a requirement for a limited amount of research into the historical development of the complex. Accordingly, a number of historical and archive sources have been accessed in order to provide information on the historic development of the site.

2. HISTORIC SOURCES

2.1 Archival Material and Secondary Sources

The following sources of documentary, cartographic and photographic evidence were consulted:

- ◆ *Tyne and Wear County Archives, Blandford Square (TWCA)*
- ◆ *Tyne and Wear County Sites and Monuments Record, Jesmond Road, Newcastle (SMR)*
- ◆ *Newcastle Central Library, Local Studies Room (NCL)*

2.2 Types of Information

The main sources of historic evidence regarding the nature and development of the buildings complex are contained in historic maps and plans, and building control records. While the social history of the site could be reconstructed from official registers of births, marriages, deaths, as well as census and tax records, trade directories and other publications, this purpose lies outside the scope of the present report and such documents were not examined .

2.2.1 Map Evidence

In addition to the historic maps previously examined as part of the archaeological assessment of the site (ASUD 2003), a number of others were examined, including the following:

Survey of Newcastle upon Tyne by J Corbridge, from Bourne's History of Newcastle, 1723.

Wood's *Map of Newcastle upon Tyne*, 1827.

Goat's Insurance Plan, Newcastle upon Tyne, edition updated to 1896 (Illus. 00).

The following building control plans were examined:

(TWCA) T186/997 – *Sketch plan of the building, n.d. (c.1950?)*

(TWCA) T186/1954 – *Alterations proposed in July 1866* (Illus. 00).

(TWCA) T186/116654a – *Alterations proposed for the owner, Mr Deuchar, August 1886* (Illus. 00).

(TWCA) T186/11799 – *Proposed alterations to bar and addition of shop, November 1886* (Illus. 00).

(TWCA) T186/ - *Alterations proposed in March 1896* (Illus. 00).

(TWCA) T186/116654b – Alterations proposed for the owner, Mr Deuchar, January 1928 (Illus. 00).

2.2.2 Site Inspection and Local Information

The site was inspected closely during the photographic recording exercise. The internal inspection revealed few features of importance, since most of the upper floors and many dividing walls have collapsed or been removed. With the exception of a single staircase and some iron support pillars, almost the only features of any interest survived on the internal faces of the main street frontages. Externally the buildings survived rather better, exhibiting most of the features visible on earlier photographs and elevation plans.

3. PHOTOGRAPHIC RECORDING

Photographic recording of the site was undertaken in March 2004 in accordance with the specification provided by the county archaeological officer.¹ All parts of the buildings complex were inspected both internally and externally, and colour and monochrome prints produced of all accessible facades and features of specific interest. General room views were photographed along with features and details of significance, including staircases, fireplaces, decorative woodwork, columns, brickwork and window surrounds. A number of photographs were also taken to show the buildings in the context of neighbouring buildings and the wider area. The photographs were taken with the aid of natural light where possible; otherwise using halogen lighting and flash photography.

¹ Specification for Archaeological Recording at the Carlisle Public House, Corner of Blenheim Street and Westgate Road, Newcastle Upon Tyne. Newcastle City Council, 2003.

4. CONCLUSIONS

4.1 Conclusions

The complex comprises a number of discrete structural elements, probably constructed in phases over a relatively short period in the early and middle parts of the nineteenth century. Some of the present structures on the site probably follow the layout of much earlier structures and land divisions, thereby providing a degree of continuity with the later medieval urban layout. The present character and appearance of the site derives largely from the process of addition, incorporation, adaptation and reconstruction of structures during and between discrete phases of new build.

The buildings complex may be regarded as of distinct local significance, representing a class of building and incorporating architectural features that are becoming scarcer in the region.

A number of plans and elevation drawings deriving from various phases of development and alteration works to the site survive in various local archives and provide a good visual impression of the layout and appearance of the buildings complex from the 1860s onwards.

4. REFERENCES

ASUD (Archaeological Services University of Durham), 2003, *Blenheim Street, Westgate Road, Newcastle upon Tyne: archaeological desk-top study*. (Unpublished report produced for Blenheim Street Developments Ltd.)

Pevsner N and I Richmond, 1957, *The Buildings of England: Northumberland* (second Penguin edition revised in 1992 by Grundy J, G McCombie, P Ryder and H Welfare). Yale University Press.

Newcastle City Council, 2003, *Specification for Archaeological Recording at the Carlisle Public House, Corner of Blenheim Street and Westgate Road, Newcastle Upon Tyne*. (Unpublished document produced by the Archaeological Officer of the Newcastle City Council Conservation Team)

7. PHOTOGRAPHIC APPENDIX

COLOUR FILM 1

Catalog .no.	Neg. ref. no.	Internal/ External	Description
1	C1/15	N/A	N/A
2	C1/14	Internal	Stair & stair rails
3	C1/13	Internal	Timber frame and brick infill on stair
4	C1/12	Internal	Timber frame and brick infill on stair
5	C1/11	Internal	Timber frame and brick infill on stair
6	C1/10	Internal	Upper stair
7	C1/9	Internal	Iron support pillar
8	C1/8	Internal	Iron support pillar upper detail
9	C1/7	Internal	Iron support pillar behind Blenheim St window frontage
10	C1/6	Internal	Blenheim St window
11	C1/5	Internal	Carved detail of Blenheim St window frame
12	C1/4	Internal	Entrance to yard at rear of property, beside stairs
13	C1/3	Internal	Hall leading to entrance to yard at rear of property, beside stairs
14	C1/2	Internal	Inside of door at corner of Westgate Road & Blenheim Street, dropping to cellar
15	C1/1	Internal	Upper part of Pillar over cellar wall

COLOUR FILM 2

Catalog .no.	Neg. ref. no.	Internal/ External	Description
16	C2/36	Internal	Rear face of Westgate Road frontage, former Carlisle Public House
17	C2/35	Internal	Detail of windows - rear face of Westgate Road frontage
18	C2/34	Internal	Gas fittings
19	C2/33	Internal	Rear face of Blenheim Street frontage, former Carlisle Public House
20	C2/32	Internal	Rear face of Blenheim Street frontage, dropping to cellar
21	C2/31	Internal	Cellar to rear of Blenheim Street frontage, looking South
22	C2/30	Internal	Pillar behind Blenheim Street frontage (see 15)
23	C2/29	Internal	Cupboard door, rear of Westgate Road frontage
24	C2/28	Internal	Cupboard door and ceiling, rear of Westgate Road frontage
25	C2/27	Internal	Remains of fireplace, rear of Westgate Road frontage
26	C2/26	Internal	Door at West end of Westgate Road frontage
27	C2/25	Internal	Shop frontage at West end of Westgate Road frontage
28	C2/24	External	West-facing elevation from SE corner of yard
29	C2/23	External	Upper West-facing elevation from SE corner of yard
30	C2/22	External	West-facing elevation from NE corner of yard
31	C2/21	External	Upper West-facing elevation from NE corner of yard
32	C2/20	External	South-facing elevation from South end of yard
33	C2/19	External	NE corner of yard, incl. West-facing elevation, from SW corner of yard – note structural remains in East wall
34	C2/18	External	North-facing elevation from NW corner of yard
35	C2/17	External	South-facing elevation (in sunlight)
36	C2/16	External	South-East corner of yard from NW corner, incl. south part of East elevation – note structural remains in South wall
37	C2/15	External	Arched passageway from yard to Westgate Road frontage
38	C2/14	External	Entrance door, east side of arched passageway
39	C2/13	External	West end of Westgate Road frontage
40	C2/12	External	Central part of Westgate Road frontage
41	C2/11	External	Central part of Westgate Road frontage
42	C2/10	External	East end of Westgate Road frontage
43	C2/9	External	East end of Westgate Road frontage
44	C2/8	External	Window, central part of Westgate Road frontage
45	C2/7	External	Brick- and stonework, upper Westgate Road frontage
46	C2/6	External	Remains of poster, Westgate Road frontage
47	C2/5	External	Remains of poster (dated 1968), Westgate Road frontage
48	C2/4	External	Name of licensee, Sarah Smith, Carlisle Public House
49	C2/3	External	Pub sign
50	C2/2	External	Carved detail of window surround, Westgate Road frontage
51	C2/1	External	View from west of the building, north side of Westgate Road

COLOUR FILM 3

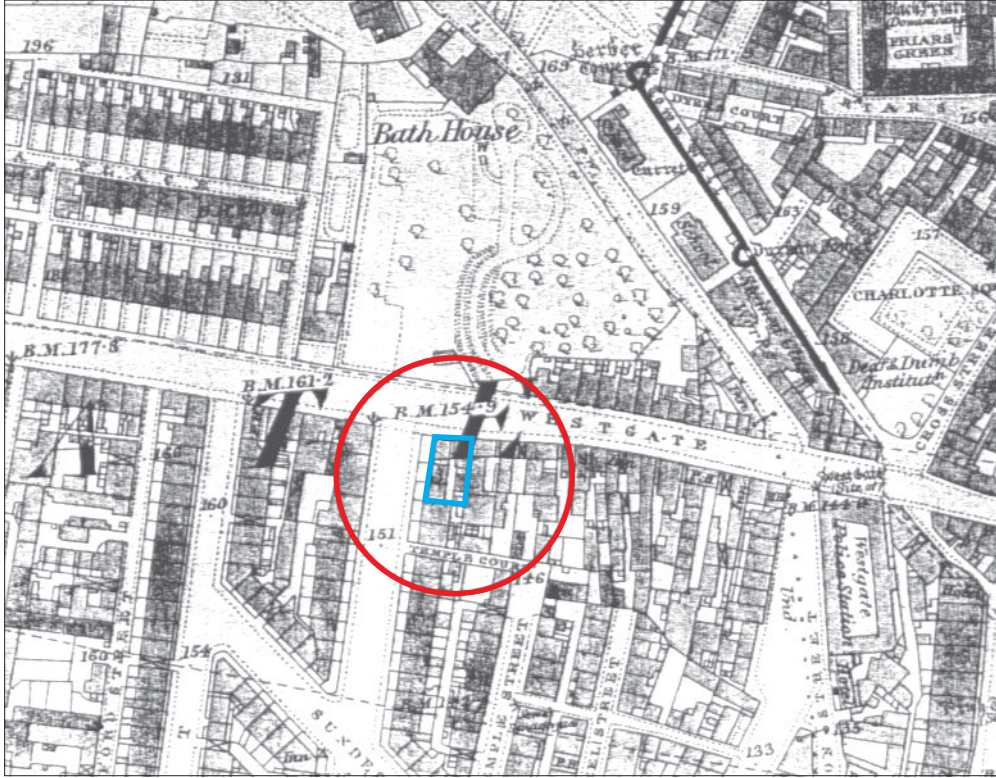
Catalog .no.	Neg. ref. no.	Internal/ External	Description
52	C3/27	External	South end of Blenheim Street (now St James Boulevard) frontage
53	C3/26	External	South end and central part of Blenheim Street frontage
54	C3/25	External	Central part and North end of Blenheim Street frontage
55	C3/24	External	North end of Blenheim Street frontage
56	C3/23	External	Windows at North end of Blenheim Street frontage
57	C3/22	External	Upper North end of Blenheim Street frontage, incl. decorative polychrome brickwork
58	C3/21	External	Carved detail of window surround, North end of Blenheim Street frontage
59	C3/20	External	Carved detail of window surround, North end of Blenheim Street frontage
60	C3/19	External	Doorway at south end of Carlisle PH building
61	C3/18	External	Shop sign, South end Blenheim Street frontage
62	C3/17	External	Wooden lower Carlisle PH frontage
63	C3/16	External	View of the building from the south-west, centre of St James Boulevard
64	C3/15	External	View of the building from the west, west side of St James Boulevard
65	C3/14	External	View of the building from the north-west, centre of St James Boulevard

MONOCHROME FILM 1

Catalog .no.	Neg. ref. no.	Internal/ External	Description
66	M1/1	Internal	Timber frame and brick infill on stair
67	M1/2	Internal	Timber frame and brick infill on stair
68	M1/3	Internal	Iron support pillar
69	M1/4	Internal	Iron support pillar upper detail
70	M1/5	Internal	Blenheim St window
71	M1/6	Internal	Carved detail of Blenheim St window frame
72	M1/7	Internal	Entrance to yard at rear of property, beside stairs
73	M1/8	Internal	Inside of door at corner of Westgate Road & Blenheim Street
74	M1/9	Internal	Detail of windows - rear face of Westgate Road frontage
75	M1/10	Internal	Detail of windows - rear face of Westgate Road frontage
76	M1/11	Internal	Gas fittings
77	M1/12	Internal	Windowed rear face of Blenheim Street frontage
78	M1/13	Internal	Cellar to rear of Blenheim Street frontage
79	M1/14	Internal	Pillar behind Blenheim Street frontage
80	M1/15	Internal	Cupboard door, rear of Westgate Road frontage
81	M1/16	Internal	Cupboard door and ceiling, rear of Westgate Road frontage
82	M1/17	Internal	Remains of fireplace, rear of Westgate Road frontage
83	M1/18	Internal	Door at West end of Westgate Road frontage
84	M1/19	Internal	Shop frontage at West end of Westgate Road frontage
85	M1/20	External	West-facing elevation from SE corner of yard
86	M1/21	External	Upper West-facing elevation from SE corner of yard
87	M1/22	External	West-facing elevation from NE corner of yard
88	M1/23	External	Upper West-facing elevation from NE corner of yard
89	M1/24	External	NE corner of yard, incl. West-facing elevation, from SW corner of yard – note structural remains in East wall
90	M1/25	External	South-facing elevation from south end of yard
91	M1/26	External	North-facing elevation from NW corner of yard
92	M1/27	External	South-East corner of yard from NW corner, incl. south part of East elevation – note structural remains in South wall
93	M1/28	External	Arched passageway from yard to Westgate Road frontage
94	M1/29	External	Entrance door, east side of arched passageway
95	M1/30	External	West end of Westgate Road frontage
96	M1/31	External	Central part of Westgate Road frontage
97	M1/32	External	East end of Westgate Road frontage
98	M1/33	External	Window, central part of Westgate Road frontage
99	M1/34	External	Brick- and stonework, upper Westgate Road frontage
100	M1/35	External	Detail of carved wooden window surround, Westgate Road frontage
101	M1/36	External	Remains of poster (dated 1968), Westgate Road frontage

MONOCHROME FILM 2

Catalog .no.	Neg. ref. no.	Internal/ External	Description
102	M2/1	External	South end of Blenheim Street (now St James Boulevard) frontage
103	M2/2	External	South end of Blenheim Street frontage
104	M2/3	External	South end and central part of Blenheim Street frontage
105	M2/4	External	Central part and North end of Blenheim Street frontage
106	M2/5	External	North end of Blenheim Street frontage
107	M2/6	External	Windows at North end of Blenheim Street frontage
108	M2/7	External	Upper North end of Blenheim Street frontage, incl. decorative polychrome brickwork
109	M2/8	External	Carved detail of window surround, North end of Blenheim Street frontage
110	M2/9	External	Carved detail of window surround, North end of Blenheim Street frontage
111	M2/10	External	Doorway at south end of Carlisle PH building
112	M2/11	External	Shop sign, South end Blenheim Street frontage
113	M2/12	External	Wooden lower Carlisle PH frontage
114	M2/13	External	View of the building from the south-west, centre of St James Boulevard
115	M2/14	External	View of the building from the west, west side of St James Boulevard
116	M2/15	External	View of the building from the north-west, centre of St James Boulevard



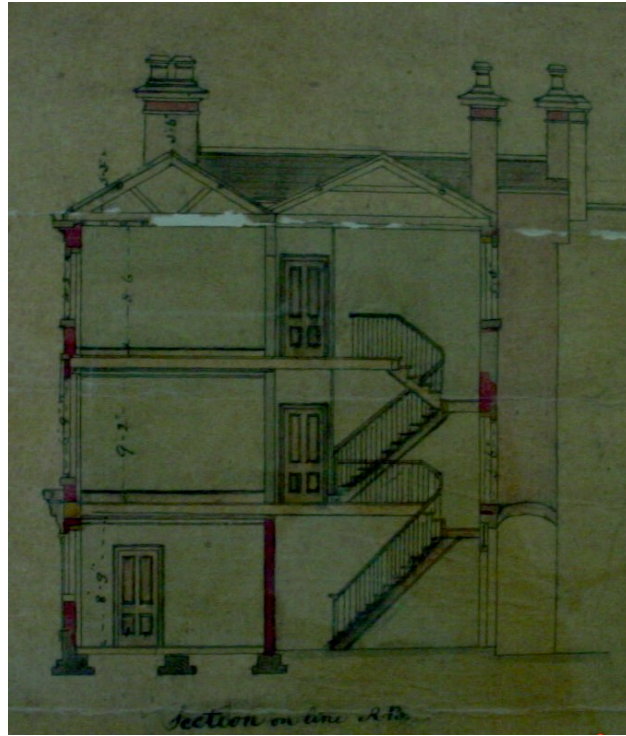
Illus. 1: Extract from First Edition Ordnance Survey Plan, showing site location



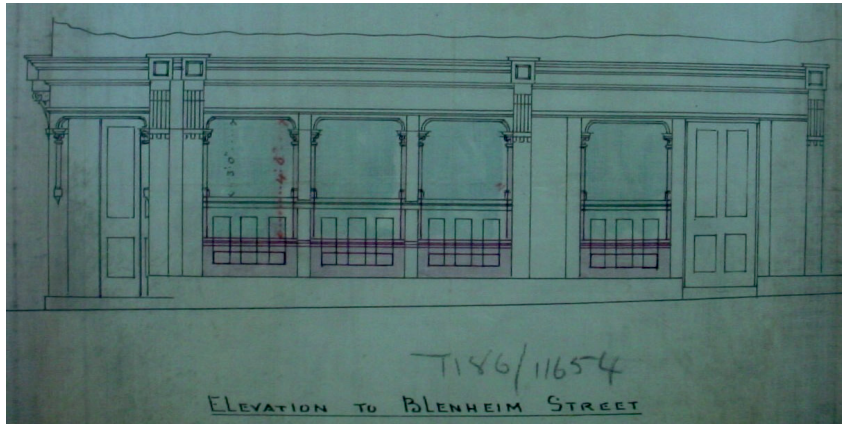
Illus. 2: The Blenheim Street frontage, 1866 (from T186/1954)



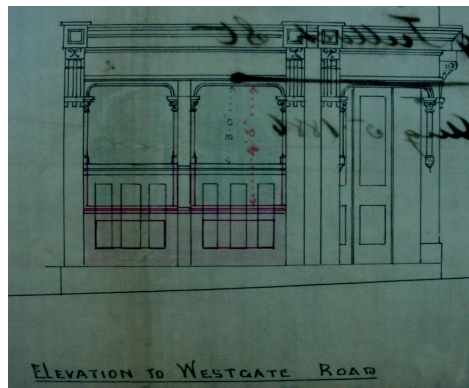
Illus. 3: The Westgate Road frontage, 1866 (from T186/1954)



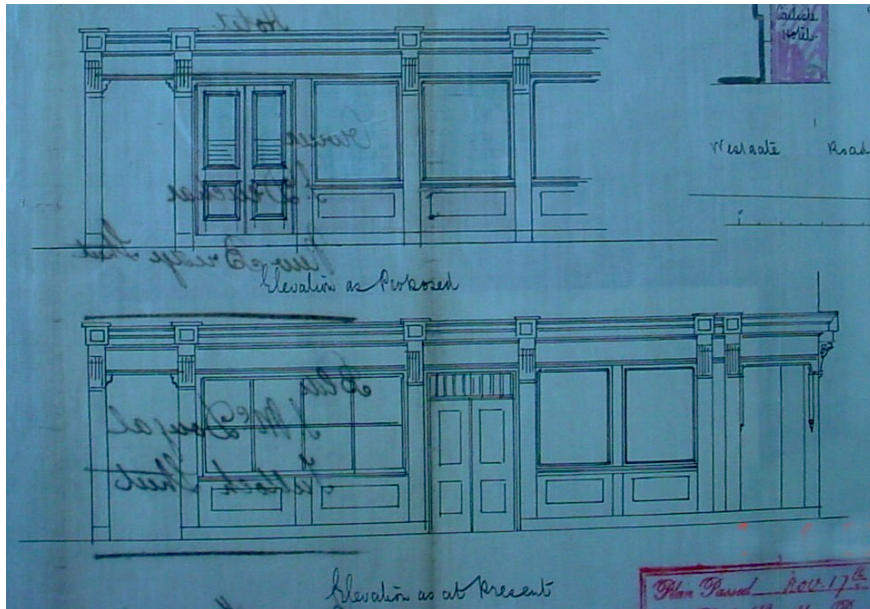
Illus. 4: Cross-section of Blenheim Street frontage, 1866 (from T186/1954)



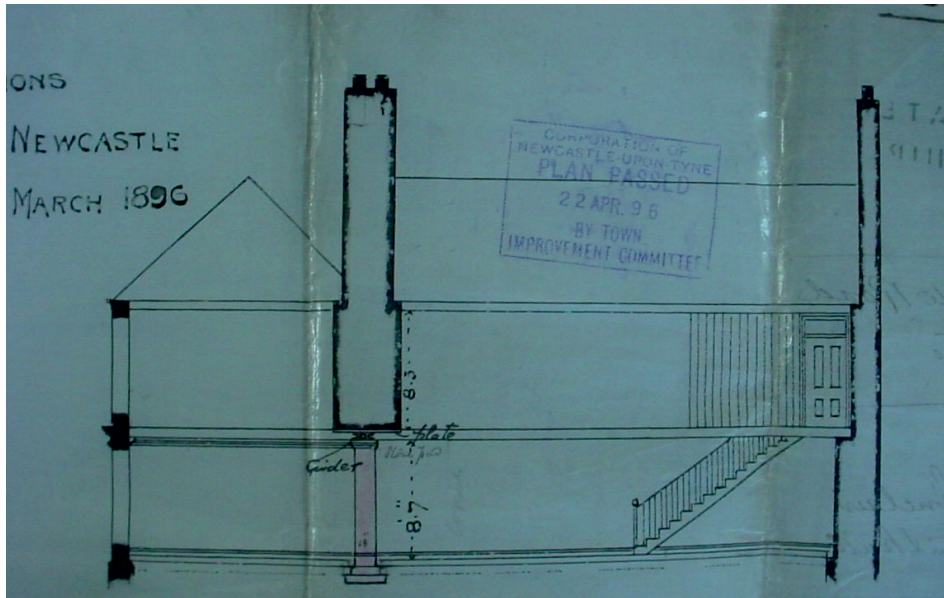
Illus. 5: Blenheim Street frontage, 1886 (from T186/11644a)



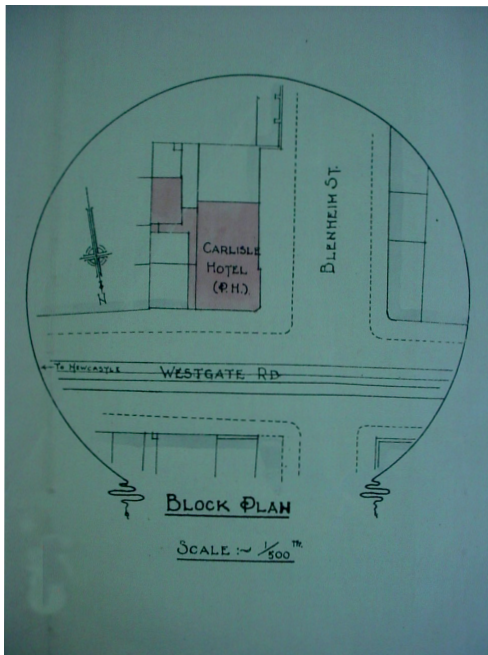
Illus. 6: Westgate Road frontage, 1886 (from T186/11644a)



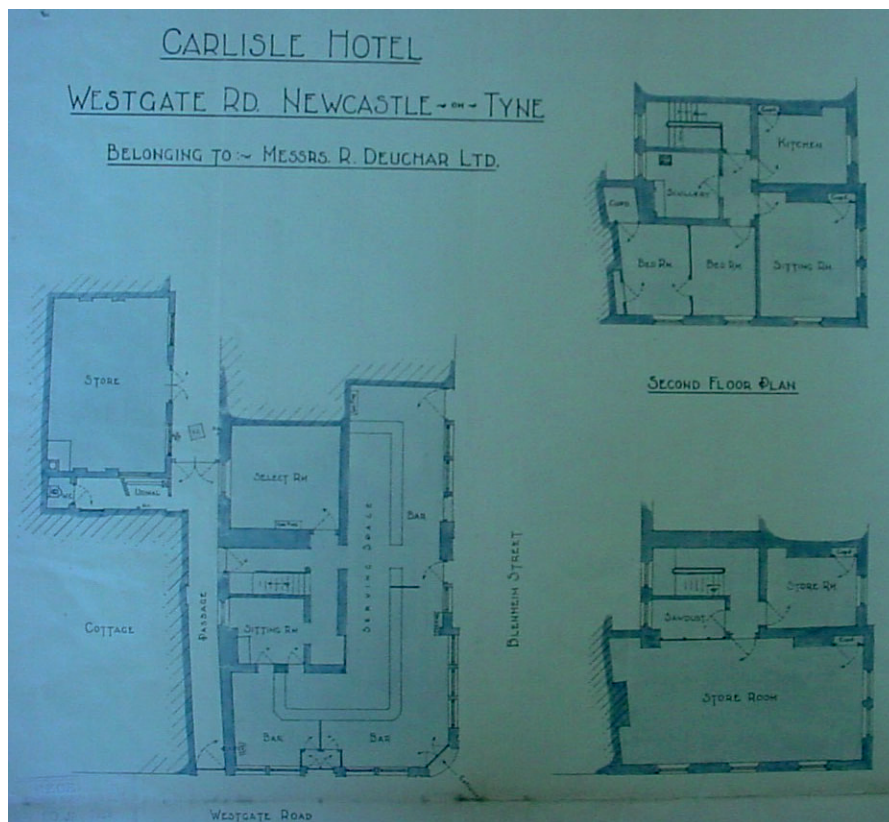
Illus. 7: North and West elevations, November 1886 (from T186/11799)



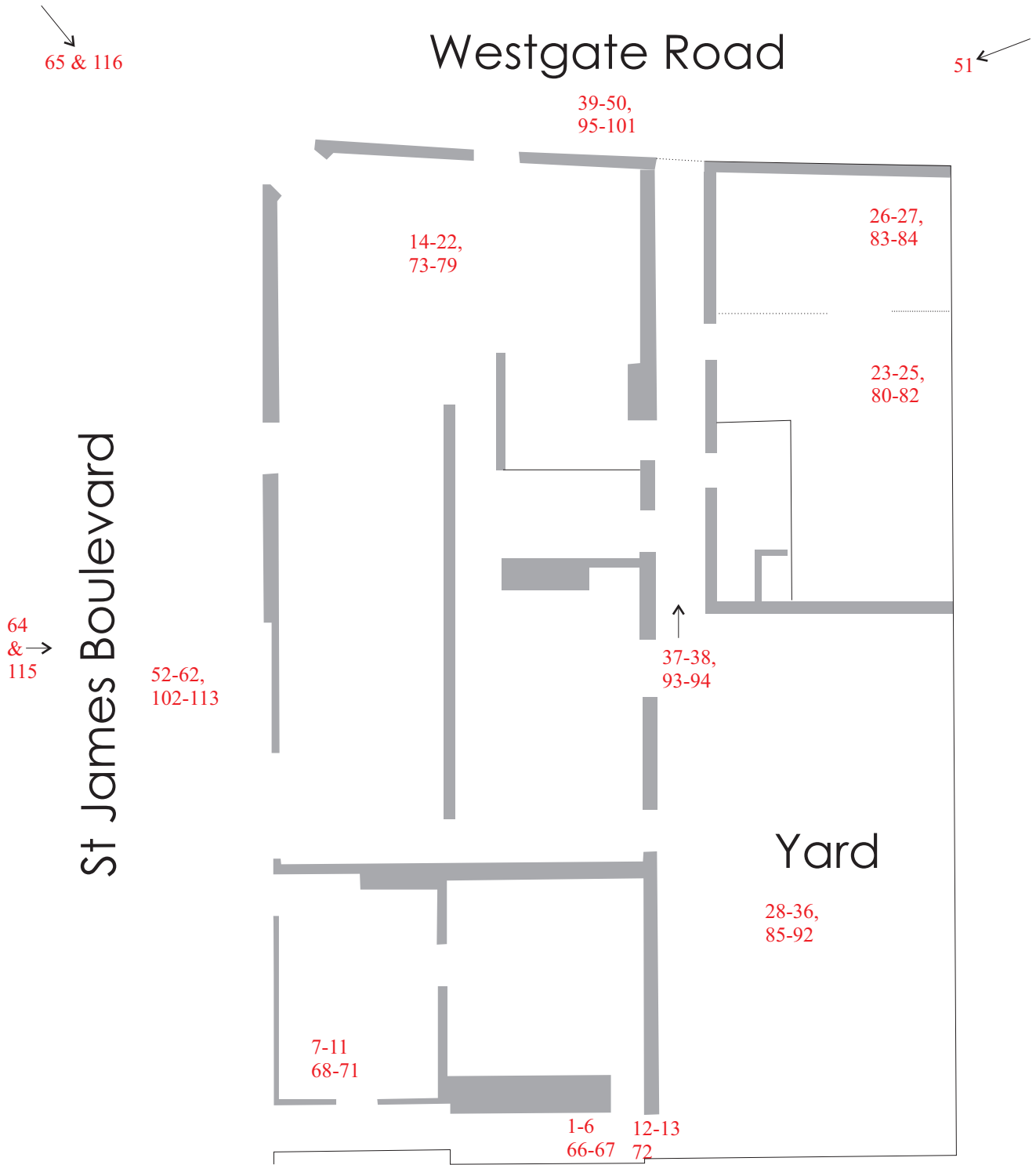
Illus. 8: Cross-section of building, 1896 (from T186/16913)



Illus. 9: Location plan, 1928 (from T186/116654b)



Illus. 10: Building plans, 1928 (from T186/116654b)



*Illus. 11: Outline plan of buildings complex
(photograph catalogue numbers keyed to Section 6)*