

The Old Vicarage,  
Main Street, Kings Norton

[Grid Ref: SK 6887 0049]

LEVEL 2 PHOTOGRAPHIC SURVEY

Stephen Bradwell, MA MRTPI IHBC  
Trigpoint Conservation & Planning Ltd.  
Report Date: 20<sup>th</sup> August 2008  
Accession No. X.A 120.2008

# CONTENTS

Summary	1
1. Introduction and Scope of the Survey	1
2. Site Location and Setting	1
3. Statutory Designations	2
4. Summary of the Building's Type, Age & Materials	2
5. Archive Deposition	3
Appendix 1: Photographic Record	4
Appendix 2: Architects Survey Drawings & Site Location Plan	24
Appendix 3: Photographic Register	25

## **Summary**

*Trigpoint Conservation & Planning Ltd. was engaged by Architects LE1 on behalf of their client Mr Richard Elliot to carry out a Level 2 Photographic Survey in advance of alterations to the Old Vicarage, Main Street, Kings Norton, a Grade II listed building. The archive will be deposited with the Leicestershire Museums, Arts and Records Service.*

## **1. Introduction and Scope of the Survey**

- 1.1 This record has been prepared by Stephen Bradwell of Trigpoint Conservation & Planning Ltd. in advance of alterations to the Old Vicarage, Main Street, Kings Norton, a Grade II listed building [Grid Ref: SK 6887 0049].
- 1.2 The County Council's Assistant Planning Archaeologist (APA), has previously recommended that prior to any alterations to the property and its outbuildings a photographic record of the building equivalent to a Level 2 Survey should be made. A Level 2 Survey is defined by English Heritage as essentially a descriptive investigation, with only limited interpretation of the phasing and use of the building - *Understanding Historic Buildings. A Guide to Good Recording Practice*, 2006.
- 1.5 To address the requirements of the APA, this survey therefore comprises two parts:
  - a Level 2 photographic record: a site visit and photographic survey was carried out on Tuesday 19<sup>th</sup> August 2008. The photographic survey was carried out using a 35mm SLR camera, with HP5 Ilford monochrome film, and a digital camera. The digital images were taken as raw image files and converted to TIFFs and transferred to a CD-rom.
  - a Level 1 written record.

## **2. Site Location and Setting**

- 2.1 Kings Norton (referred to as Norton by Galby on the 1814, 2" : 1 Mile, Ordnance Survey map<sup>1</sup>) is a small, compact village within open countryside six miles east, south-east of Leicester.
- 2.2 The Old Vicarage stands on the eastern side of Main Street, immediately to the north of St John the Baptist's Church, which by virtue of size and elevated location dominates the village and the surrounding countryside; with important views towards it from both close to and from a distance.
- 2.3 The village is a Conservation Area (designated on 22<sup>nd</sup> March 1994) and the published Conservation Area Appraisal notes that the Church (Grade I Listed) and the Manor Farmhouse (Grade II\* Listed) are the two most prominent buildings in the Conservation Area.

---

<sup>1</sup> Source: Ordnance Survey Drawings from the British Library's Collect Britain website:  
<http://www.collectbritain.co.uk/personalisation/object.cfm?uid=002OSD000000012U00222000&zoomimage=1>

### **3. Statutory Designations**

3.1 The existing property is Grade II listed and situated within the Kings Norton Conservation Area.

3.2 The listed building entry notes that the building was listed in December 1984 and describes it as follows:

*Cottage. Mid C19 with C18 origins. Red brick and Welsh slate roof with brick right end and 2 left end stacks. Brick dentilled eaves. 2½ storeys of 2, 2-light casements. Central blank window.*

*On ground floor a similar casement with top lights either side central part-glazed door. Cambered lintels overall.*

*On right end a 2-light in C18 ground floor walling and attic 2-light.*

*Right end adjoins left gate pier at Churchyard of St. John the Baptist (q.v.).*

*Formerly the vicarage/curate's house.*

*Included for group value.*

### **4. Summary of the Building's Type, Age and Materials**

4.1 The overall site comprises a two-storey dwellinghouse, with its main frontage facing in a westerly direction, alongside which is a range of single storey, utilitarian outbuildings that run along the northern boundary of the site. Whilst there is no obvious dating evidence within the building, the list description notes that the property was largely constructed in the mid-19<sup>th</sup> century with 18<sup>th</sup> century origins.

4.2 The property is built mainly of brick, with a section of ironstone rubble within the lower part of the rear elevation, with a natural slate pitched roof.

4.3 The property appears to have originally been built as a modest double-pile cottage and it largely retains its original form, there are no obvious extensions or alterations. At present there are 4 principal rooms on each floor, comprising of a living room, dining room, kitchen and store room the ground floor, with three bedrooms and a bathroom on the first floor. The two floors are linked by a timber dog-leg staircase which is lit by a window in the south facing gable overlooking the churchyard. The loft area is accessible by a step ladder and it is lit by two windows in either gable.

4.4 The front elevation is broadly symmetrical, the ground floor has two windows either side of a central doorway, which leads directly into the living room, while in the first floor there are two windows either side of a central blind window located over the doorway.

4.5 Fireplaces placed against the gable walls are expressed externally by two projecting brick chimneystacks on the north-facing elevation and a single projecting brick stack on the south-facing elevation.

4.6 To the rear of the property is an external courtyard and private garden.

## **5. Archive Deposition**

5.1 Following the approval of the APA, the photographic and digital archive along with a copy of this report and architect's drawings will be deposited with the County's Museums, Arts and Records Service.

5.2 The deposited archive will comprise of:

- One copy of the written report;
- Project brief submitted to the County Council's SPA;
- One set of black & white prints with negatives and contact sheet;
- One CD-rom with colour digital photographs in TIFF format and contact sheet;
- Photographic Register.

5.3 A copy of the final report will also be deposited with the English Heritage National Monuments Record in Swindon.

5.4 In addition, a summary of the project will be submitted to the 'Transactions of the Leicestershire Archaeological and Historical Society' and a record of the project made on the OASIS scheme.

## Appendix 1: Photographic Record

The photographic was carried out on Tuesday 19<sup>th</sup> August 2008, the weather was cloudy with intermittent sunshine.

### List of Plates

- Plate BW/01: Dividing wall between the dining room and the kitchen - proposed to be removed
- Plate BW/02: Alcove to the side of the chimney-breast in the dining room - proposed to be removed
- Plate BW/03: View through to the dining room from the living room
- Plate BW/04: View of the chimney-breast and wall cupboard in the living room
- Plate BW/05: View through the living room into the passageway between the staircase and the kitchen
- Plate BW/06: View from the passageway into the kitchen
- Plate BW/07: View from the kitchen along the passageway to the staircase
- Plate BW/08: View of the first floor landing from bedroom 1
- Plate BW/09: Bedroom 1 - showing the surviving fire place and wall cupboard
- Plate BW/10: Bedroom 2 - showing the surviving fire place
- Plate BW/11: Bedroom 3 - showing the surviving fire place and wall cupboard
- Plate BW/12: View across the loft space from the south-facing gable
- Plate BW/13: View across the loft space from the north-facing gable
- Plate BW/14: View through the external kitchen door through the kitchen towards the staircase
- Plate BW/15: View of the front elevation with St. John the Baptist's Church to the rear
- Plate BW/16: View of the front elevation with St. John the Baptist's Church to the rear
- Plate BW/17: View of the outbuildings and north-facing gable
- Plate BW/18: View of the south-facing gable and the churchyard wall and gate
- Plate BW/19: View of the south-facing elevation from the churchyard
- Plate BW/20: View of the rear elevation
- Plate BW/21: View of the rear elevation and north-facing gable
- Plate BW/22: Detail view of the rear elevation showing ironstone rubble
- Plate BW/23: View of the outbuildings looking north-west
- Plate BW/24: View of the outbuildings looking north-east
- Plate BW/25: Surviving cast iron range and copper in the outbuildings
- 
- Plate D/01: Dividing wall between the dining room and kitchen - proposed to be removed
- Plate D/02: Alcove to the side of chimney-breast in the dining room - proposed to be removed
- Plate D/03: View through to the dining room from the living room
- Plate D/04: View through the living room into the passageway between the staircase and the kitchen
- Plate D/05: View of the cast iron range in the kitchen to the side of the external door

- Plate D/06: View from the kitchen along the passageway to the staircase
- Plate D/07: View from of the first floor landing from bedroom 1
- Plate D/08: Bedroom 1 - showing the surviving fire place and wall cupboard
- Plate D/09: Bedroom 2 - showing the surviving fire place
- Plate D/10: Bedroom 3 - showing the surviving fire place and wall cupboard
- Plate D/11: View across the loft space from the south-facing gable
- Plate D/12: View across the loft space from the north-facing gable
- Plate D/13: View through the external kitchen door through kitchen and towards the staircase
- Plate D/14: View of the front elevation with St. John the Baptist's Church to the rear
- Plate D/15: View of the front elevation with St. John the Baptist's Church to the rear
- Plate D/16: View of the outbuildings and the north-facing gable
- Plate D/17: View of the south-facing gable and the churchyard wall and gate
- Plate D/18: View of the south-facing elevation from the churchyard
- Plate D/19: View of the rear elevation
- Plate D/20: View of the rear elevation and north-facing gable
- Plate D/21: Detail view of the rear elevation showing ironstone rubble
- Plate D/22: View of the outbuildings looking north-west
- Plate D/23: View of the outbuildings looking north-east
- Plate D/24: Surviving cast iron range and copper in the outbuildings

**Plate BW/01:**

Dividing wall between the dining room and the kitchen  
- proposed to be removed



**Plate BW/02:**

Alcove to the side of the chimney-breast in the dining room  
- proposed to be removed



**Plate BW/03:** View through to the dining room from the living room





**Plate BW/04:**

View of the chimney-breast and wall cupboard in the living room



**Plate BW/05:**

View through the living room into the passageway between the staircase and the kitchen



**Plate BW/06:**

View from the passageway into the kitchen



**Plate BW/07:**

View from the kitchen along  
the passageway to the staircase



**Plate BW/08:**

View of the first floor  
landing from bedroom 1



**Plate BW/09:**

Bedroom 1 - showing  
the surviving fire place and wall  
cupboard



**Plate BW/10:**

Bedroom 2 - showing the surviving  
fire place



**Plate BW/11:**

Bedroom 3 - showing the surviving  
fire place and wall cupboard



**Plate BW/12:**

View across the loft space from  
the south-facing gable



**Plate BW/13:**

View across the loft space from  
the north-facing gable



**Plate BW/14:**

View through the external kitchen  
door through the kitchen towards  
the staircase



**Plate BW/15:**

View of the front elevation with  
St. John the Baptist's Church  
to the rear



**Plate BW/16:**

View of the front elevation with St. John the Baptist's Church to the rear



**Plate BW/17:**

View of the outbuildings and the north-facing gable



**Plate BW/18:**

View of the south-facing gable and the churchyard wall and gate



**Plate BW/19:**

View of the south-facing elevation from the churchyard



**Plate BW/20:**

View of the rear elevation



**Plate BW/21:**

View of the rear elevation and  
the north-facing gable



**Plate BW/22:**

Detail view of the rear  
elevation showing ironstone  
rubble



**Plate BW/23:**

View of the outbuildings  
looking north-west





**Plate BW/24:**  
View of the outbuildings  
looking north-east



**Plate BW/25:**  
Surviving cast iron  
range and copper in the  
outbuildings





**Plate D/01:**

Dividing wall between the dining  
room and the kitchen  
- proposed to be removed



**Plate D/02:**

Alcove to the side of the  
chimney-breast in the dining room  
-  
proposed to be removed



**Plate D/03:**

View through to the  
dining room from the living room



**Plate D/04:**

View through the living room  
into the passageway between  
the staircase and the kitchen



**Plate D/05:**

View of the cast iron range in the  
kitchen to side of the external door



**Plate D/06:**

View from the kitchen  
along the passageway to the  
staircase





**Plate D/07:**  
View of the first  
floor landing from bedroom 1



**Plate D/08:**  
Bedroom 1 - showing  
the surviving fire place and wall  
cupboard



**Plate D/09:**  
Bedroom 2 - showing the surviving  
fire place



**Plate D/10:**

Bedroom 3 - showing the surviving  
fire place and wall cupboard



**Plate D/11:**

View across the loft space from  
the south-facing gable



**Plate D/12:**

View across the loft space from  
the north-facing gable





**Plate D/13:**

View through the external kitchen door through the kitchen towards the staircase



**Plate D/14:**

View of front elevation with St. John the Baptist's Church to the rear



**Plate D/15:**

View of the front elevation with St. John the Baptist's Church to the rear



**Plate D/16:**

View of the outbuildings and the north-facing gable





**Plate D/17:**

View of the south-facing gable and the churchyard wall and gate



**Plate D/18:**

View of the south-facing elevation from the churchyard



**Plate D/19:**

View of the rear elevation





**Plate D/20:**

View of the rear elevation and  
the north-facing gable



**Plate D/21:**

Detail view of the rear  
elevation showing ironstone  
rubble



**Plate D/22:**

View of the outbuildings  
looking north-west





**Plate D/23:**  
View of the outbuildings  
looking north-east

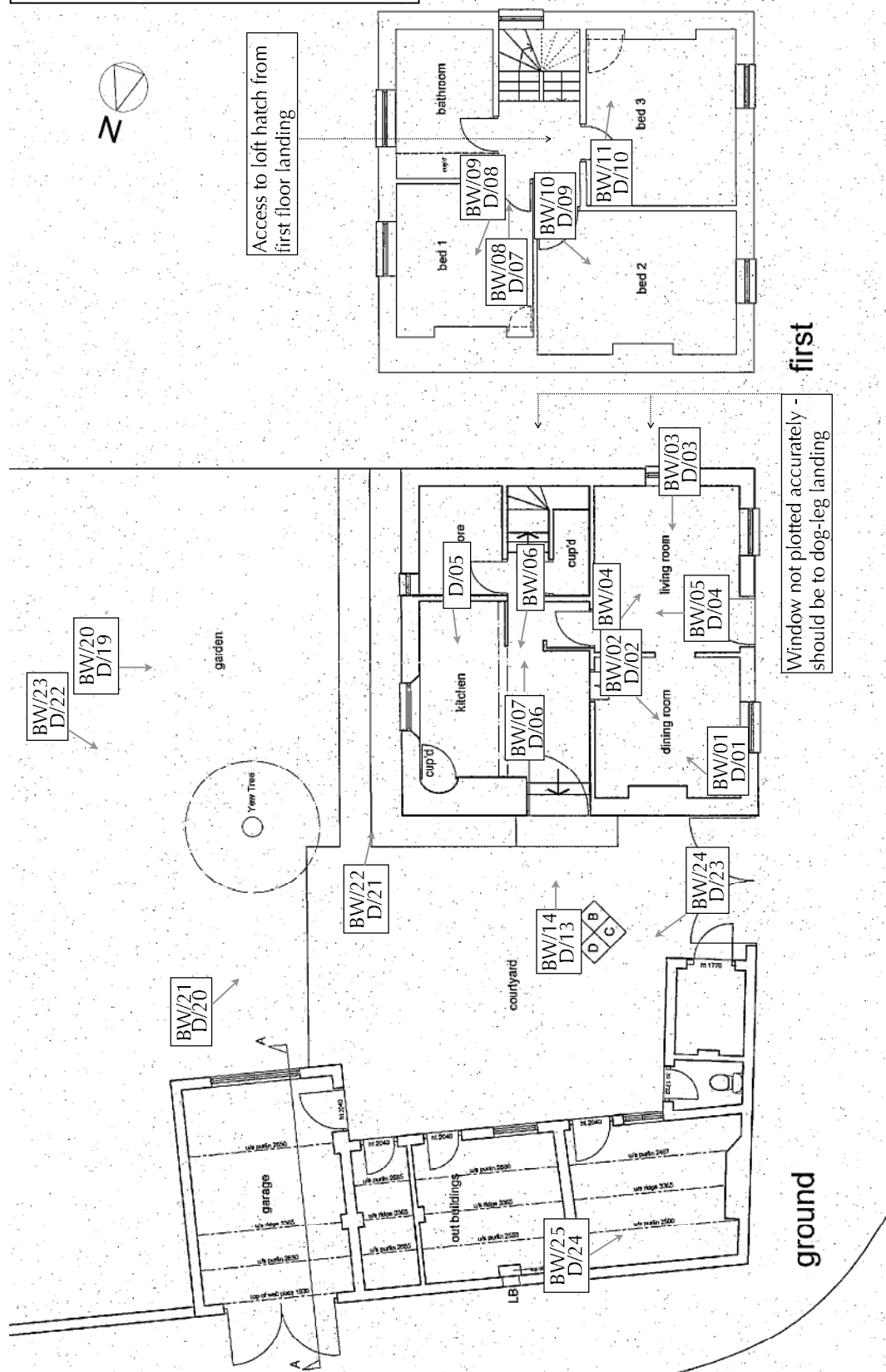


**Plate D/24:**  
Surviving cast iron  
range and copper in the  
outbuildings



[illegible]

### Appendix 3: Photographic Register



Appendix 3: Photographic Register (2)

