

Chapter 3

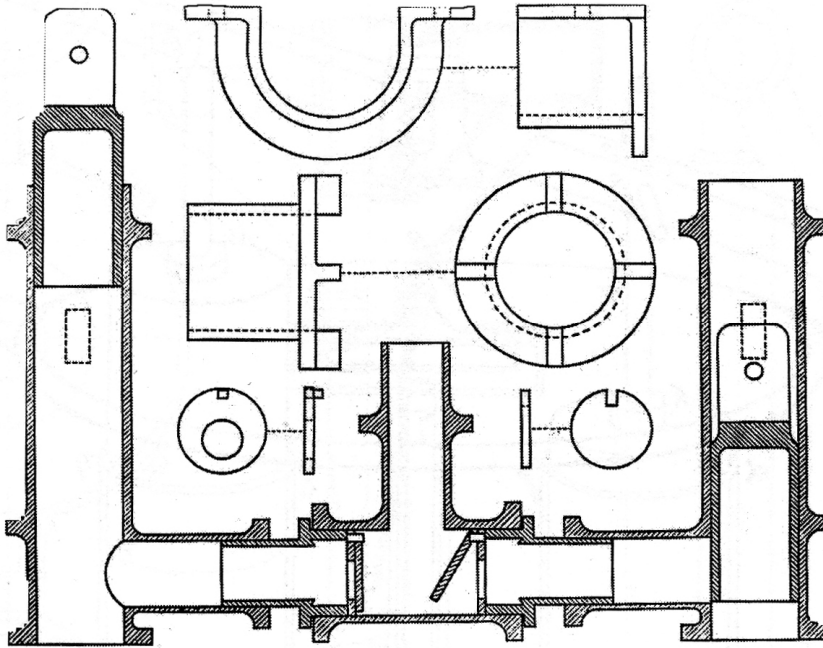


Fig. 3.1: Bolsena 1: section drawing of force pump [Davis, F 1896, fig. 8; Oleson 1984, fig 43].

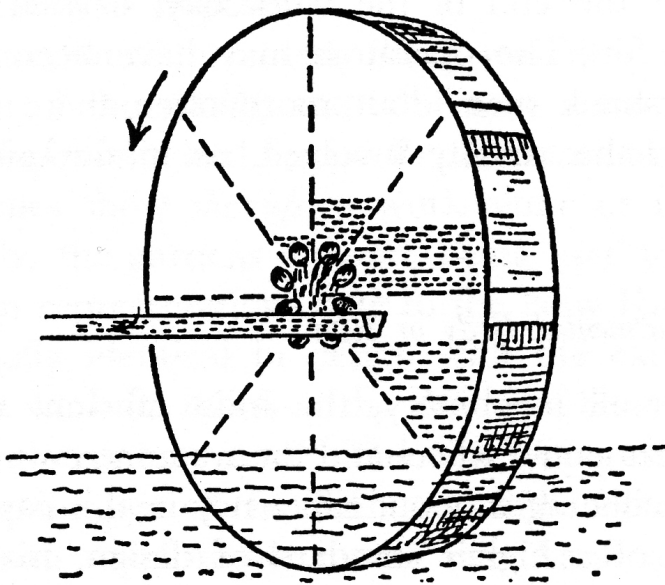


Fig. 3.2: Wheel with a compartmented body [Landels 1981, fig. 15].

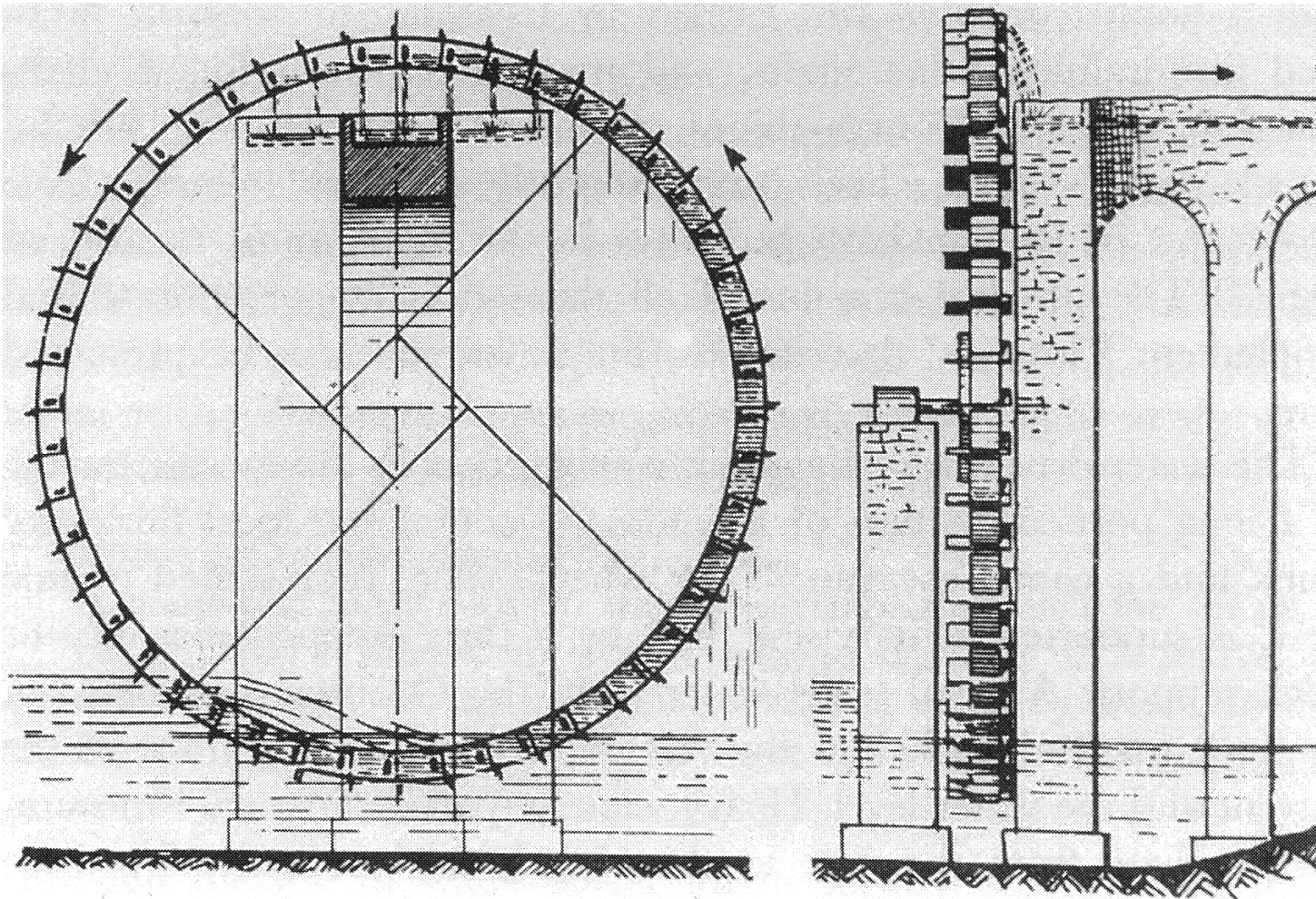


Fig. 3.3: Wheel with a compartmented rim (*noria*) [Weulersse 1940a, fig. 28].



Fig. 3.4: Modern *noria* on the Orontes at Hama, Syria [photo: author].



Fig. 3.5: 5th-century mosaic depicting *noria* from Apamea, Syria (now in Hama Museum, Syria) [photo: author].

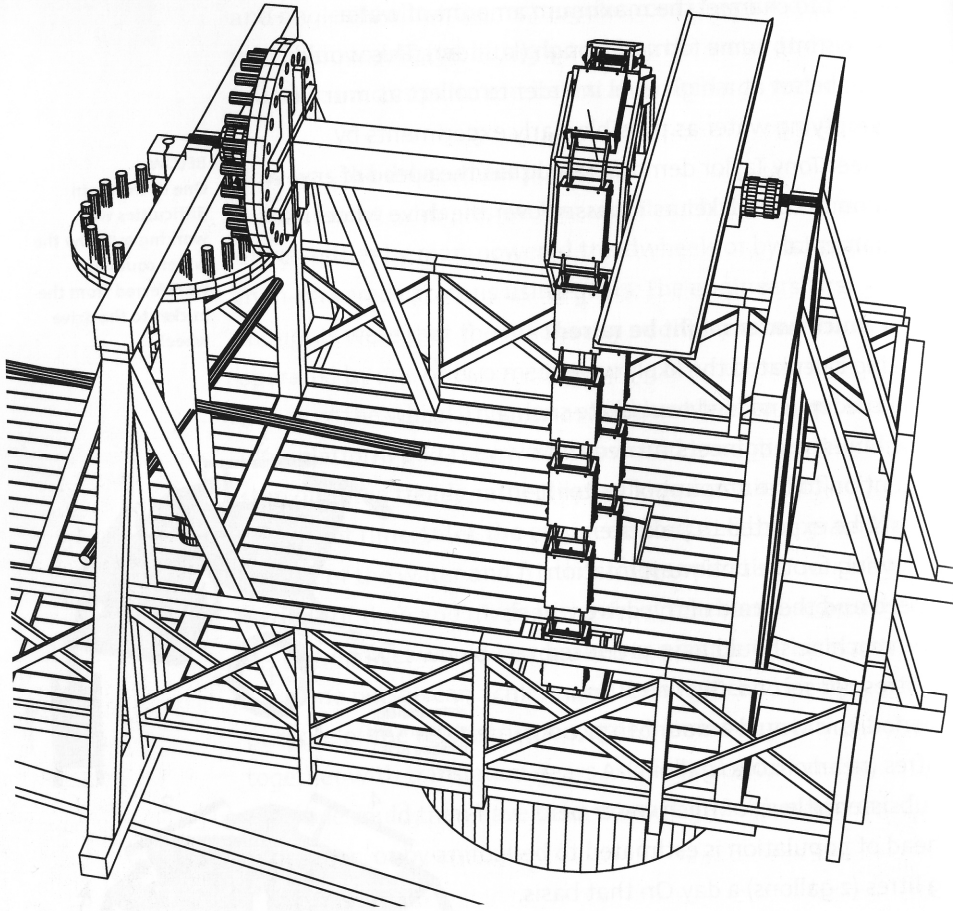


Fig. 3.6: Reconstruction of London bucket-chain [Blair and Hall 2003, 44].

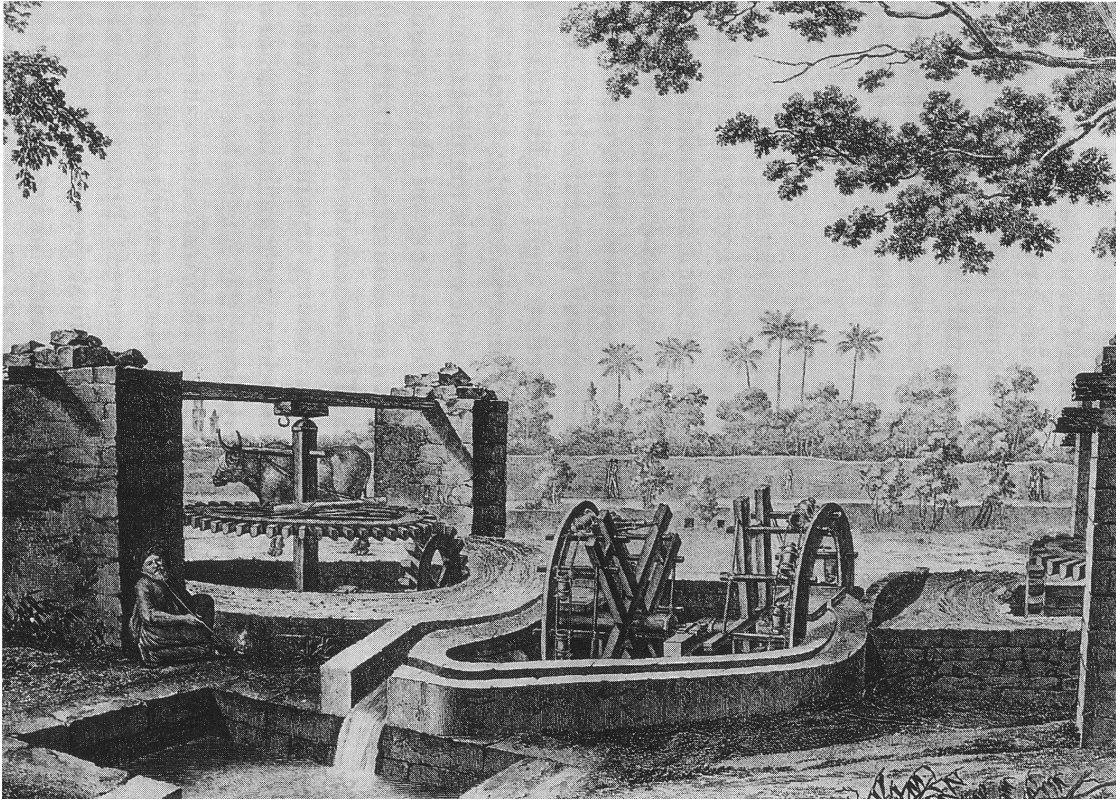


Fig. 3.7: 19th-century gear-driven double pot garland [*Description de l'Egypte*, Paris, 1822-9, II pl.5; Oleson 1984, fig. 7].

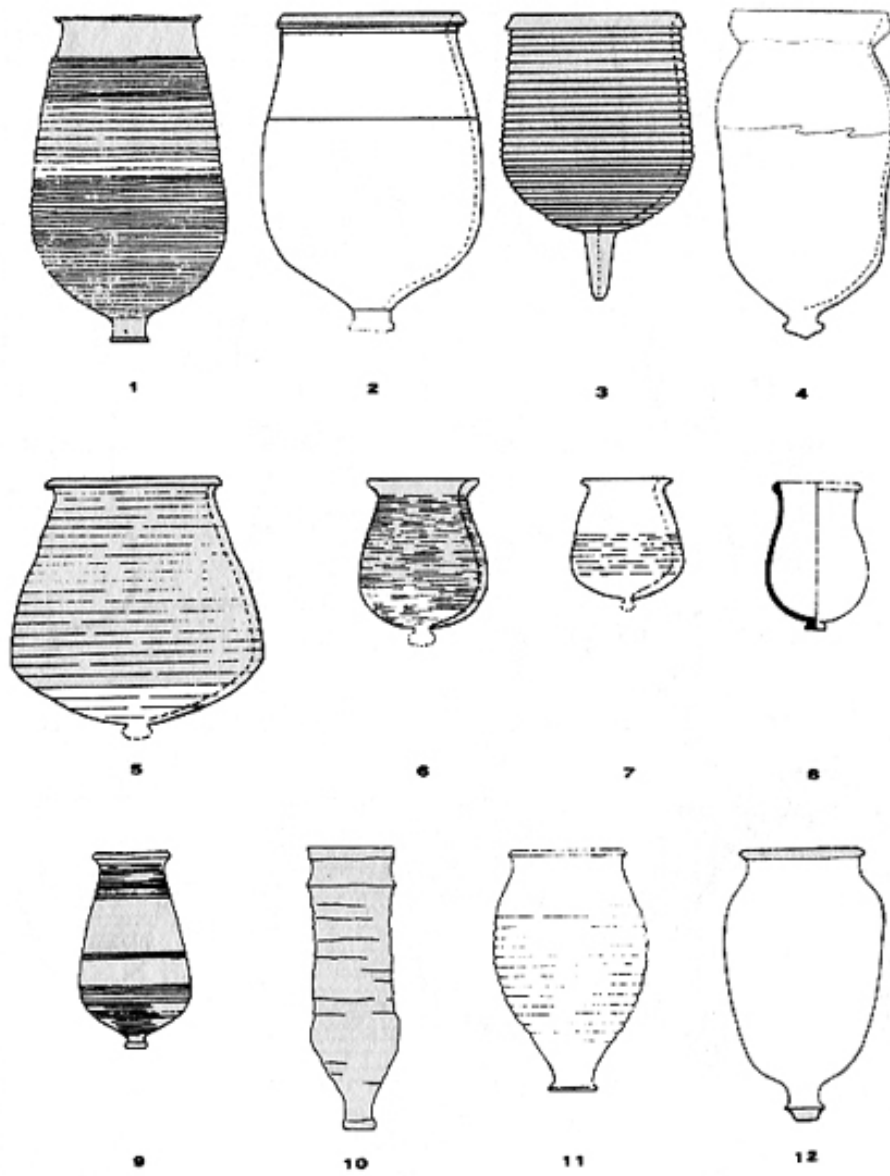


Fig. 3.8: Selection of *saqiya* pots (no. 10 may be a vaulting tube) [Oleson 1984, pl. 1].

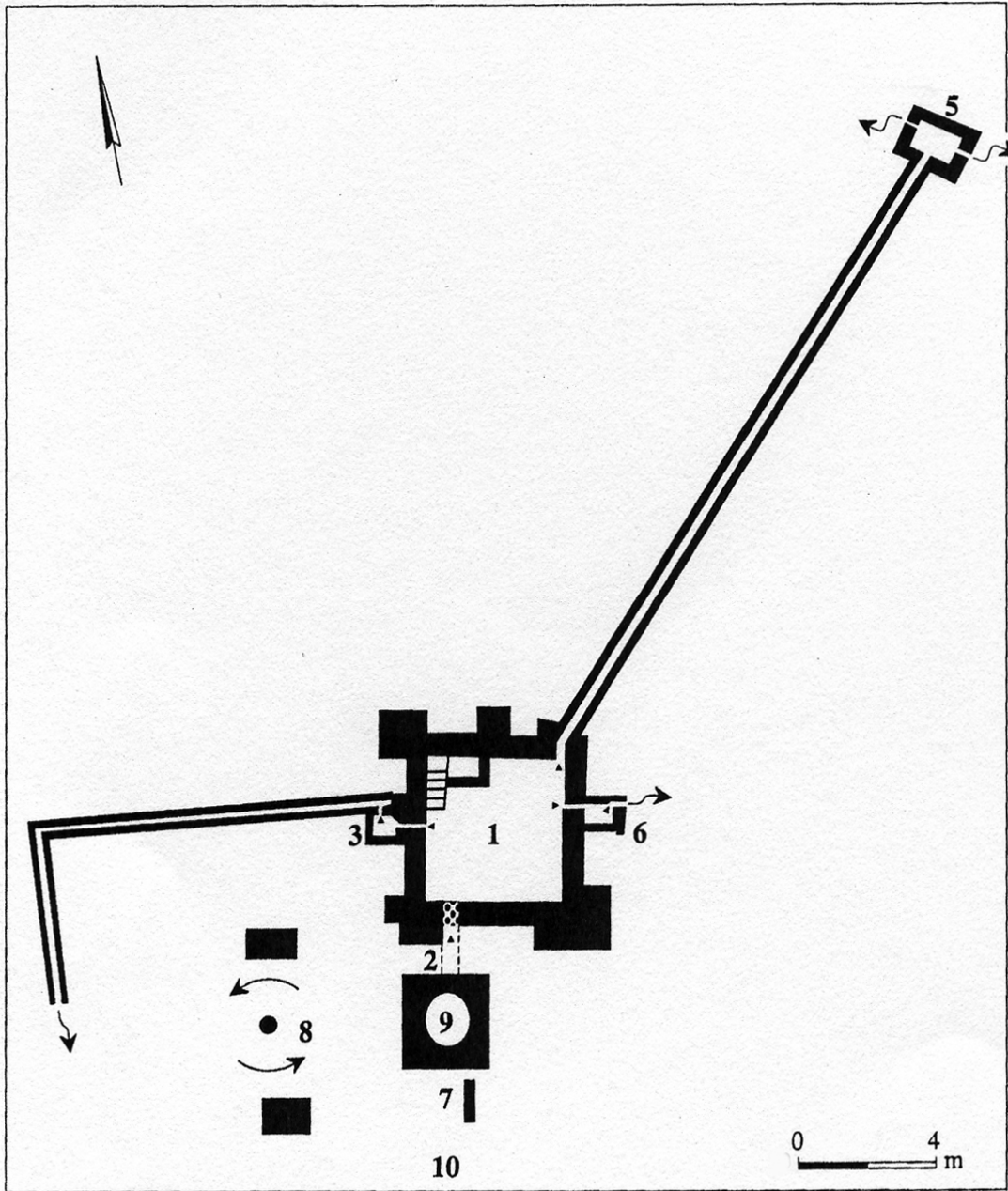


Fig. 3.9: *Saqiya* installation, Yavne Yam, Israel [Ayalon 1999, fig. 167].

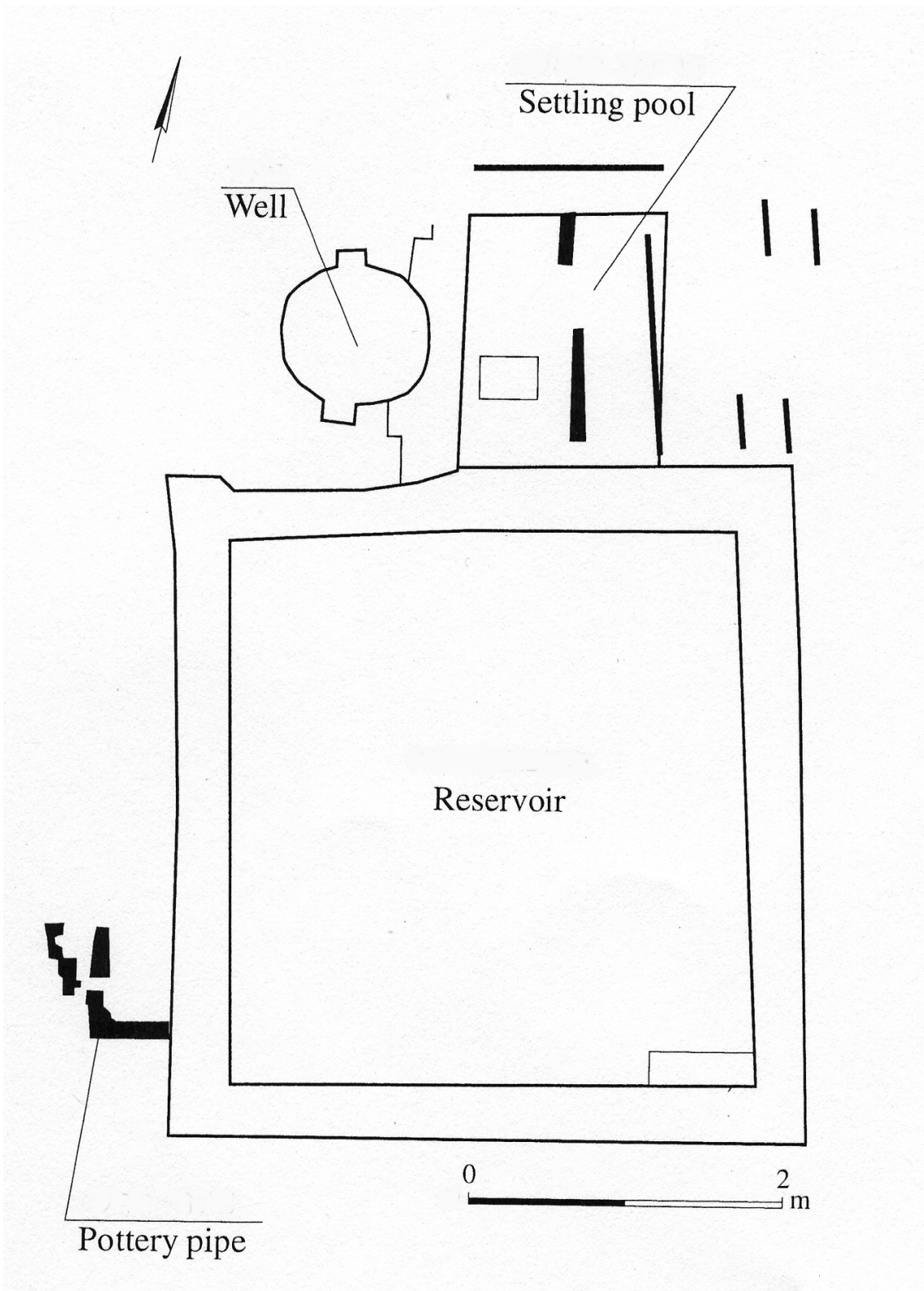


Fig. 3.10: *Saqiya* installation, Tel Ashdod, Israel [Baumgarten 1999, fig. 121].

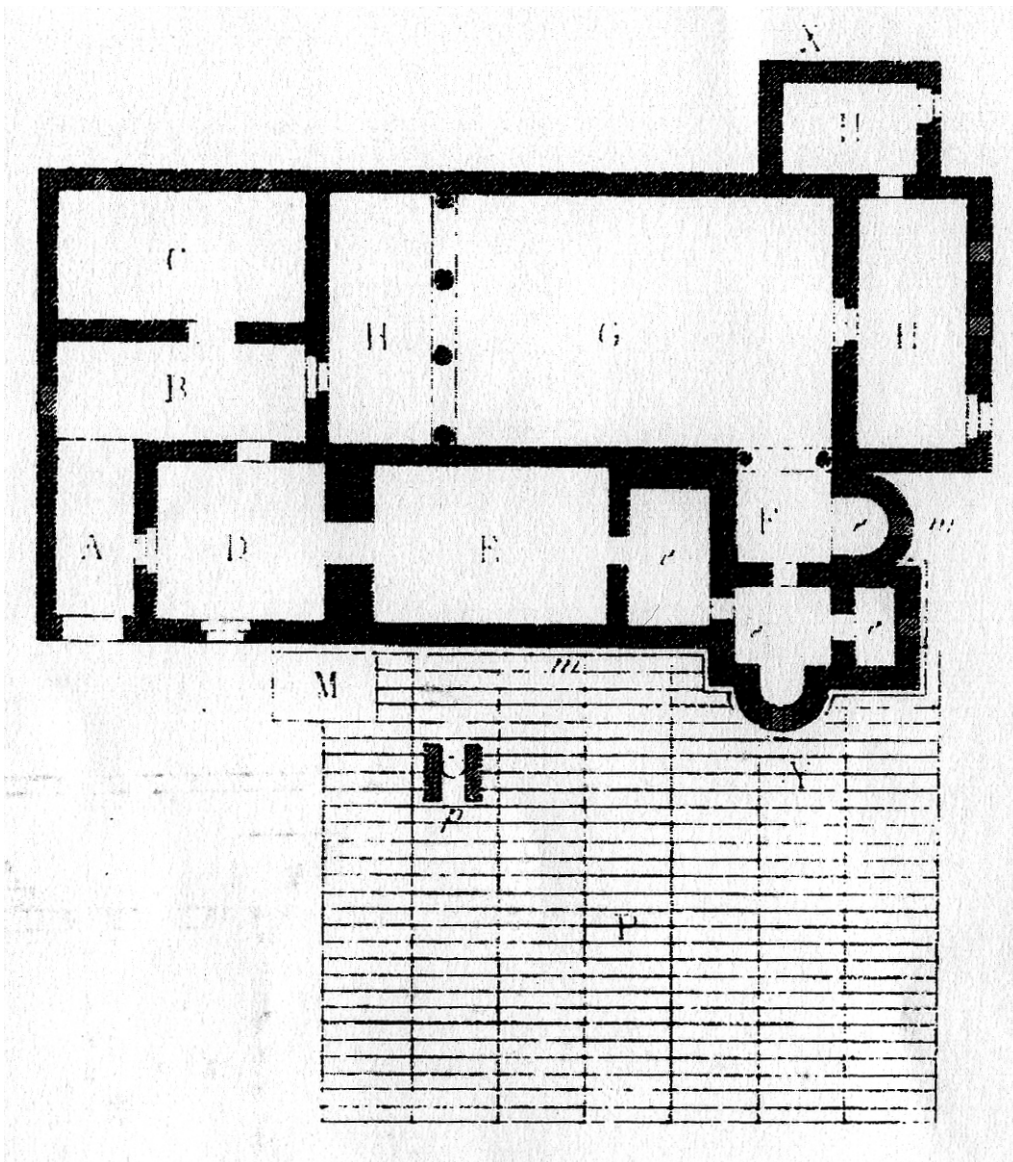


Fig. 3.11: Bathhouse at Serjilla, Syria; ?*saqiya* well at 'p' [De Voguë 1865, pl. 5].

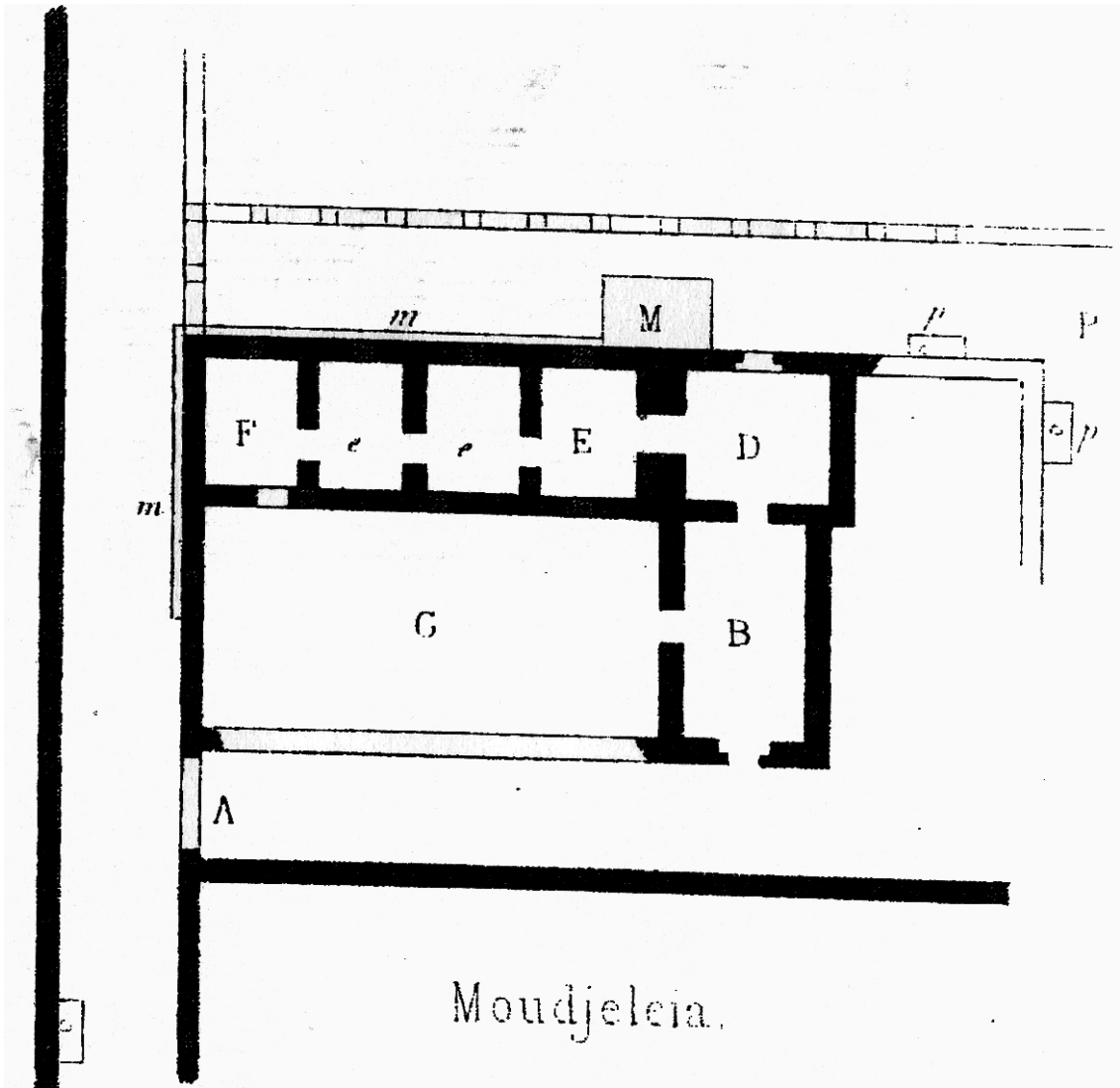


Fig. 3.12: Bathhouse at Moudjeleia, Syria; *saqiya* wells at 'p' [De Voguë 1865, pl. 5].