

Chapter 8

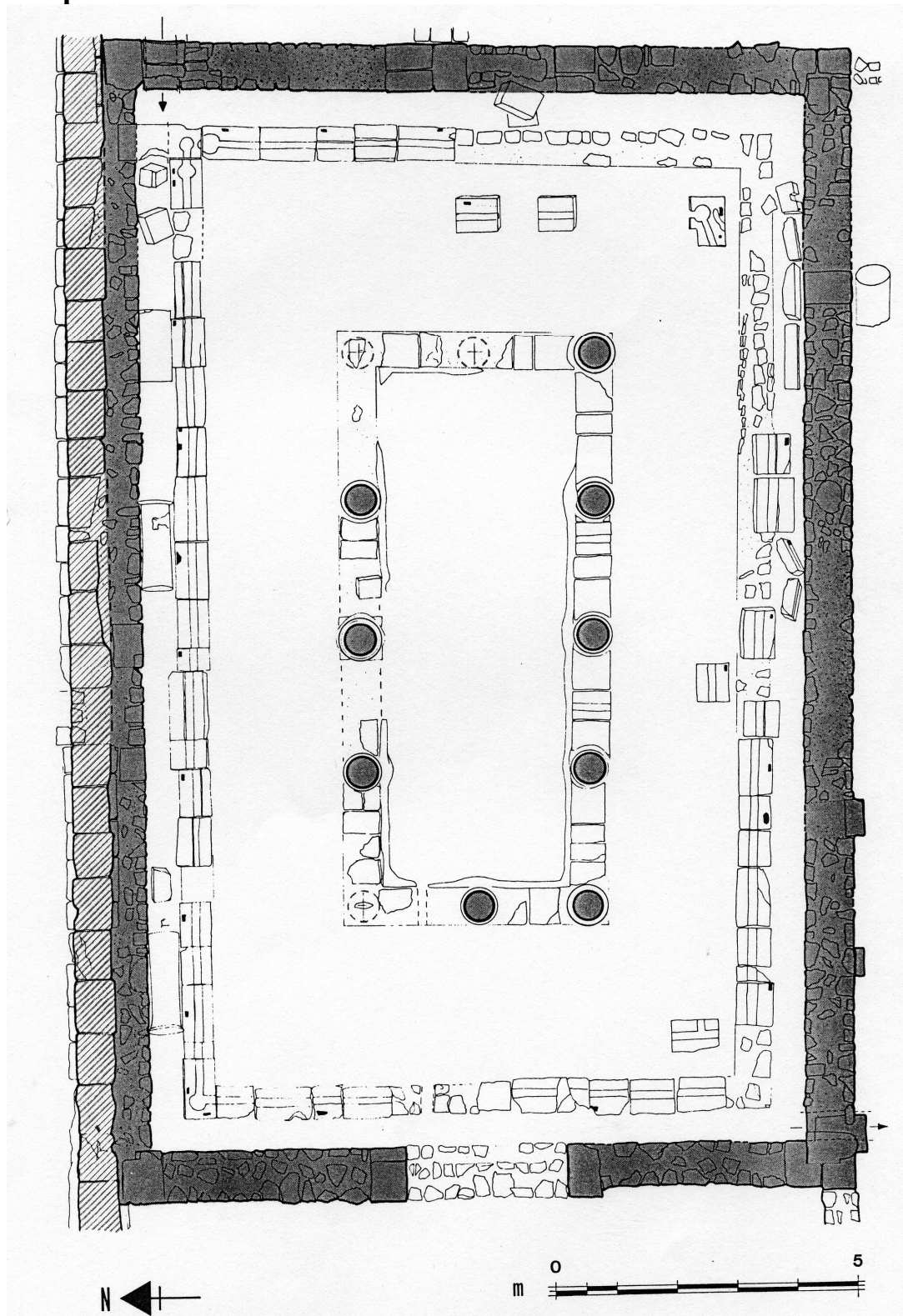


Fig. 8.1: Plan of latrine #210 showing *impluvium* design and holes for affixing seats in north-eastern corner, Apamea [Schmidt-Colinet 1984, fig. 1].



Fig. 8.2: Latrine #702, Apamea, showing the drain, gutter and basin in floor [photo: author].



Fig. 8.3: Detail of basin in latrine floor, Apamea [#702] showing gutter entering from top and pipeline leaving at base [photo: author].

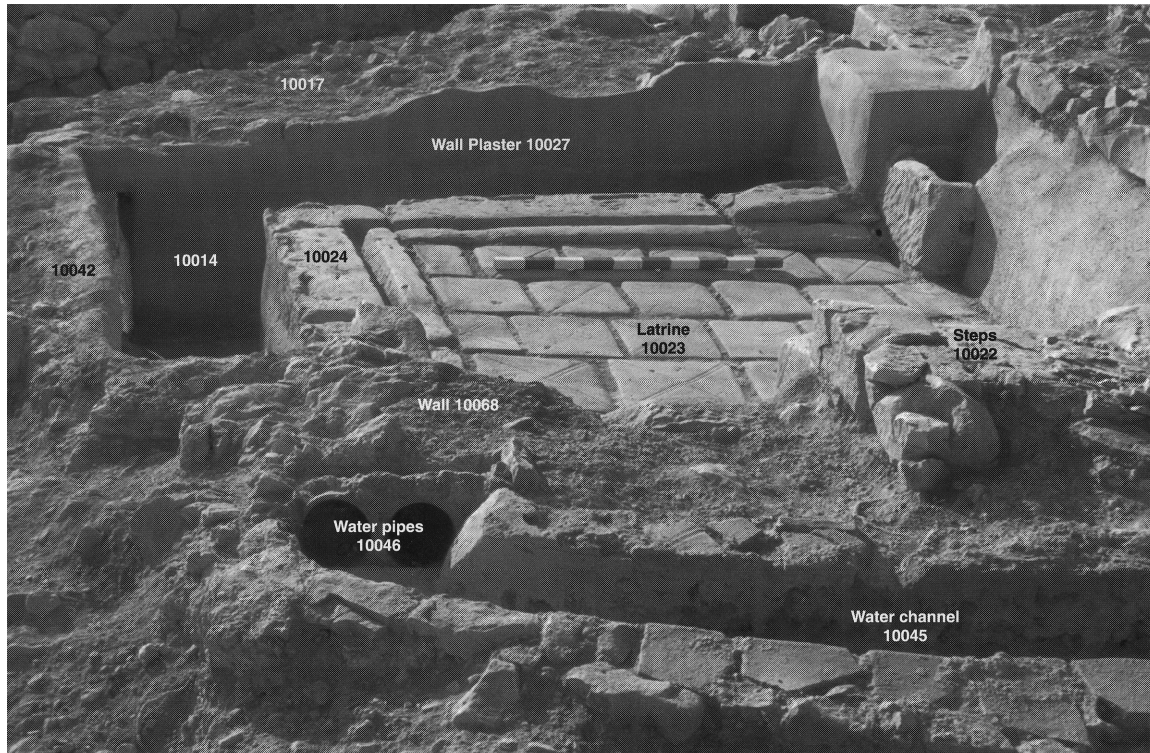


Fig. 8.4: Latrine #217, Zeugma [Early and Humphrey 2003, fig. 48].



Fig. 8.5: Geometric mosaic from latrine #210, Apamea [Balty 1981, fig. 79].

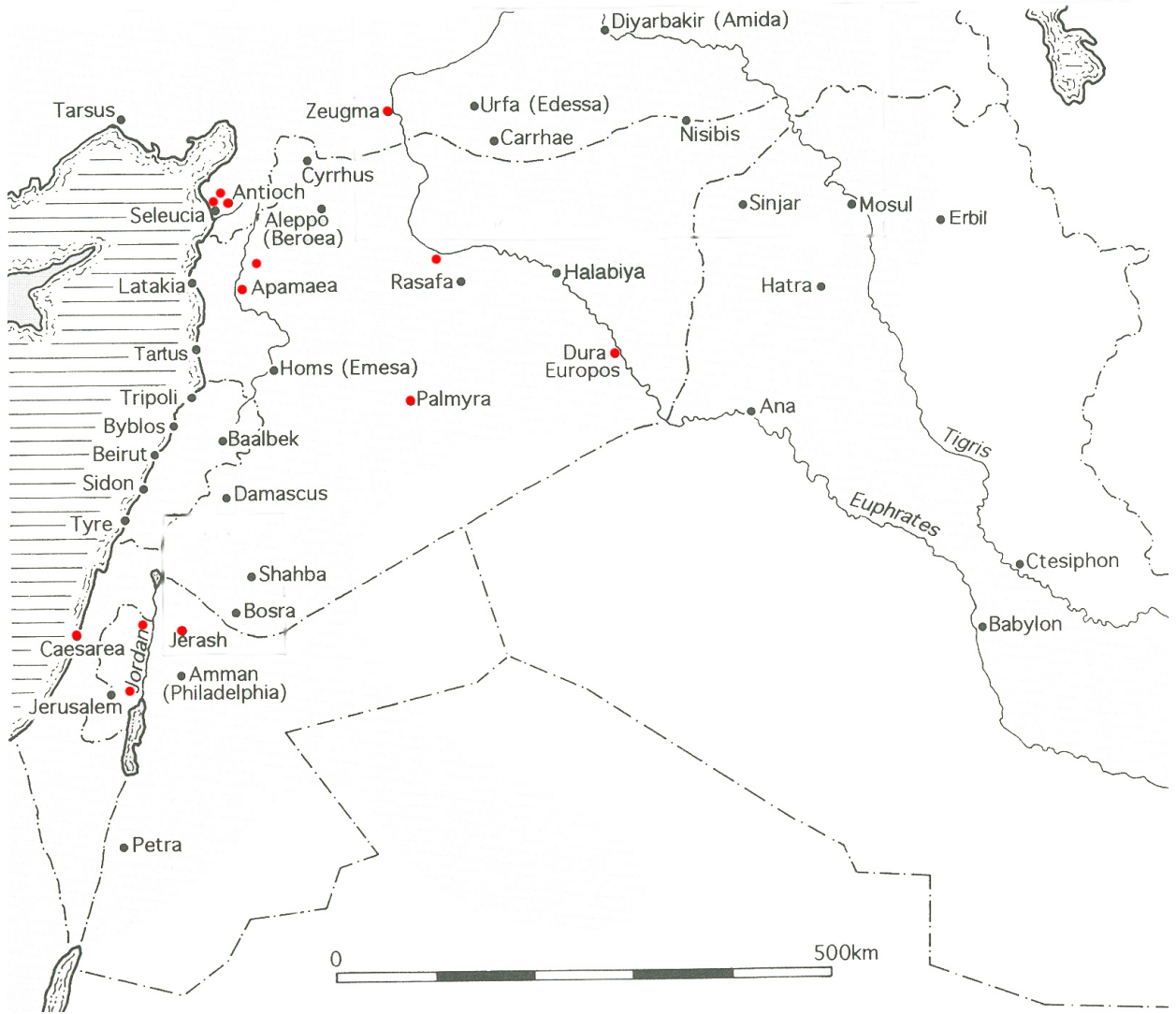


Fig. 8.6: Distribution map of sites with latrines in the Near East [drawn: author].



Fig. 8.7: Latrine from Herod's Second Palace, Jericho, showing 'channel' under seating on right [Netzer 2001, fig. 303].

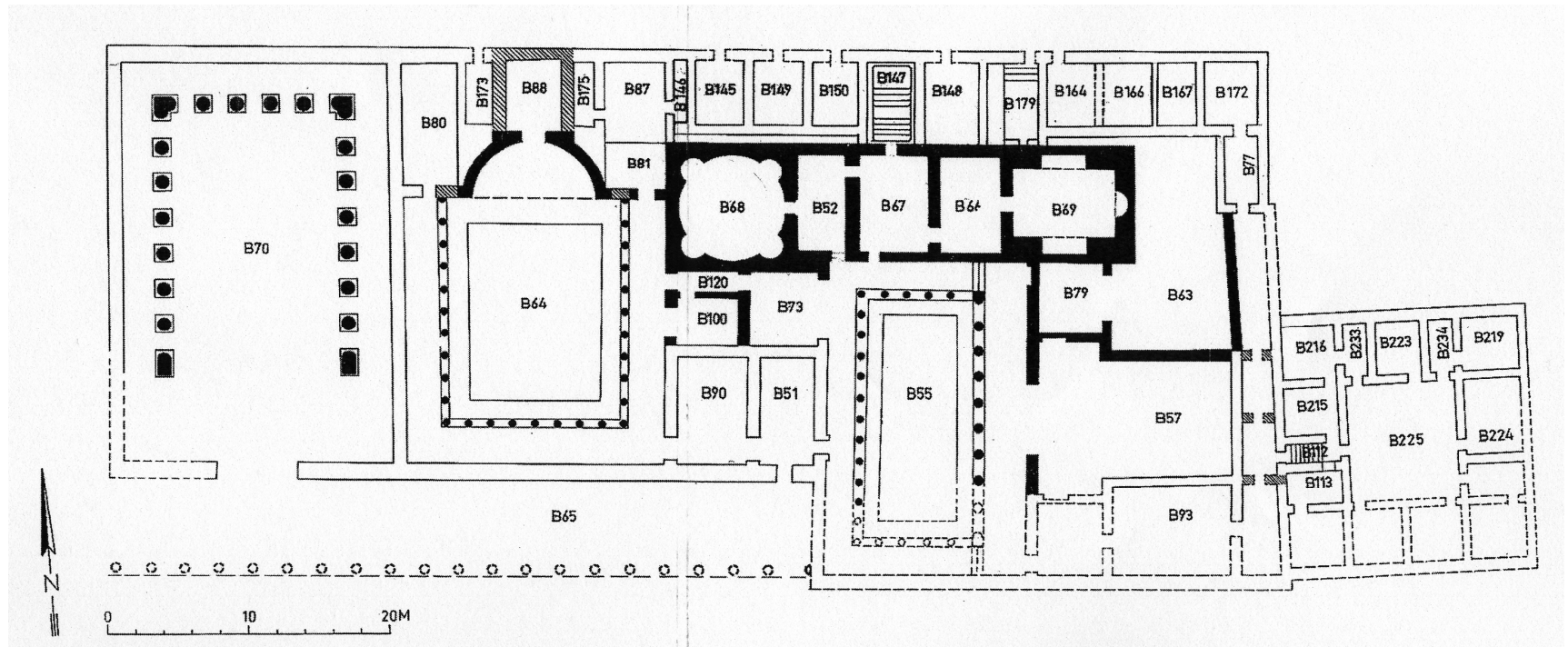


Fig. 8.8: Plan of Herod's Third Palace Northern Wing; black walls are concrete faced with *opus reticulatum* [Netzer 2004, plan 34].

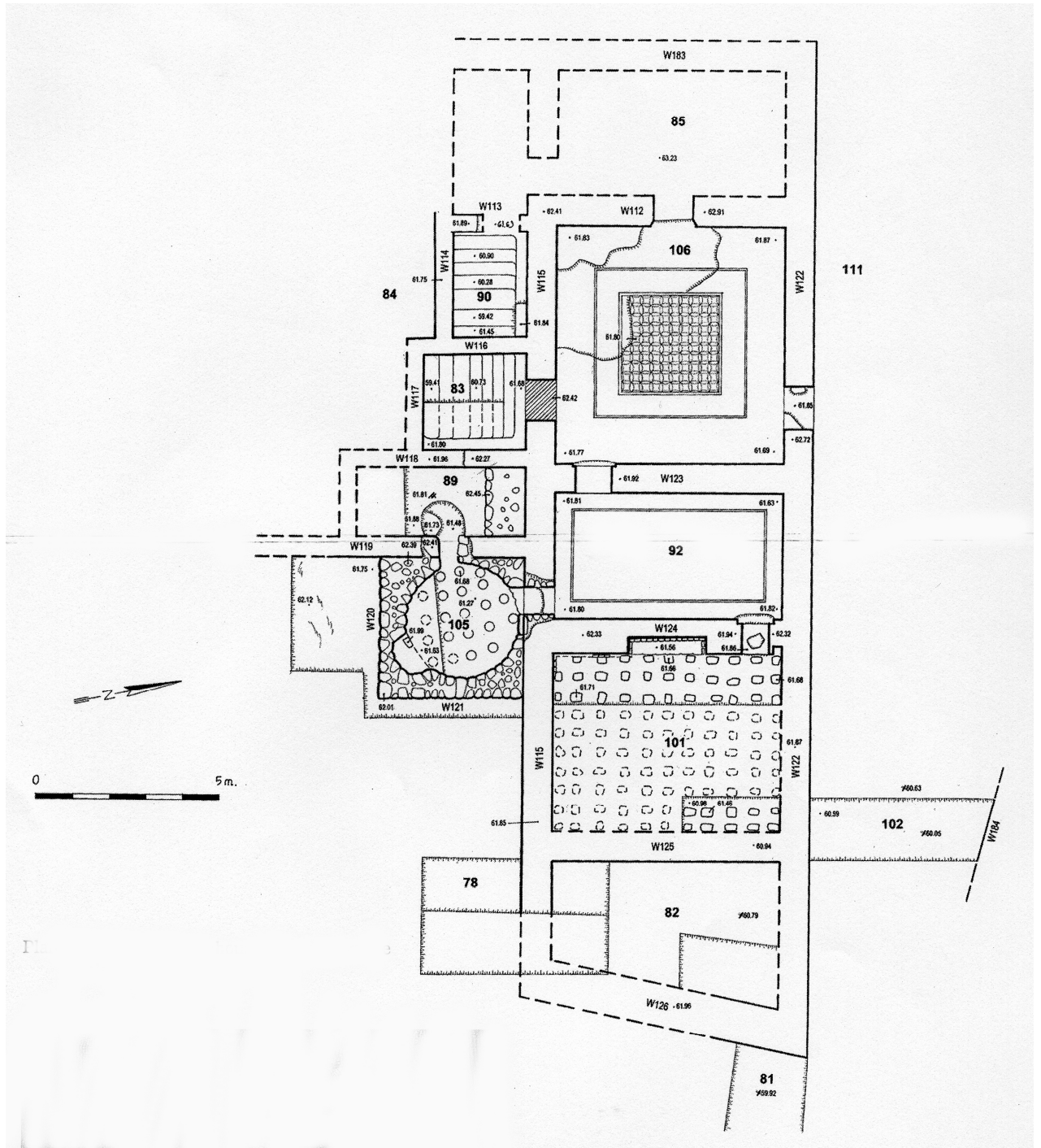


Fig. 8.9: Plan of the Cypros (shoulder) bathhouse [Netzer 2001, plan 35].

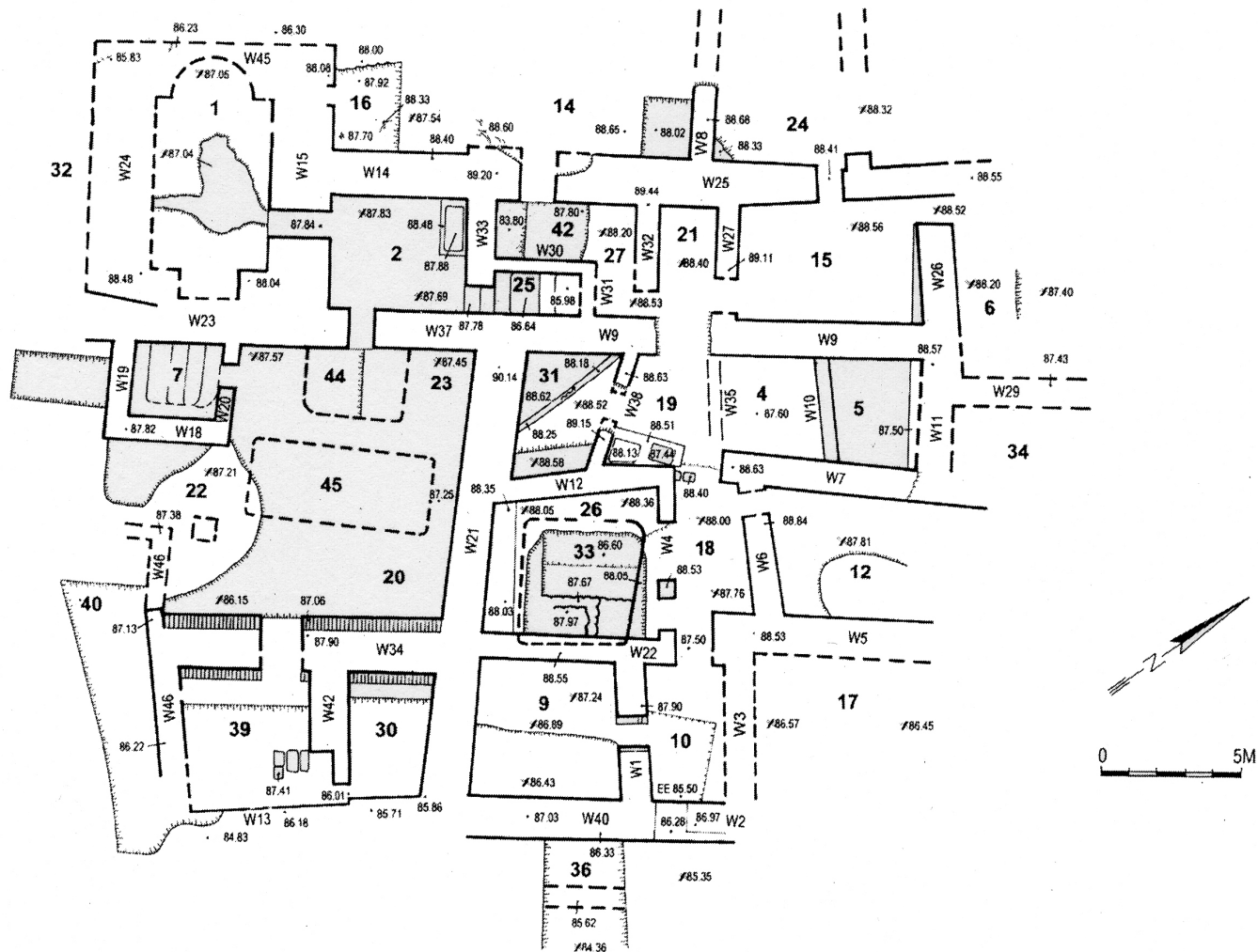


Fig. 8.10: Plan of the Cypros bathhouse [#712]. Note the locations of the two stepped pools, 7 and 25 [Netzer 2004, plan 33].

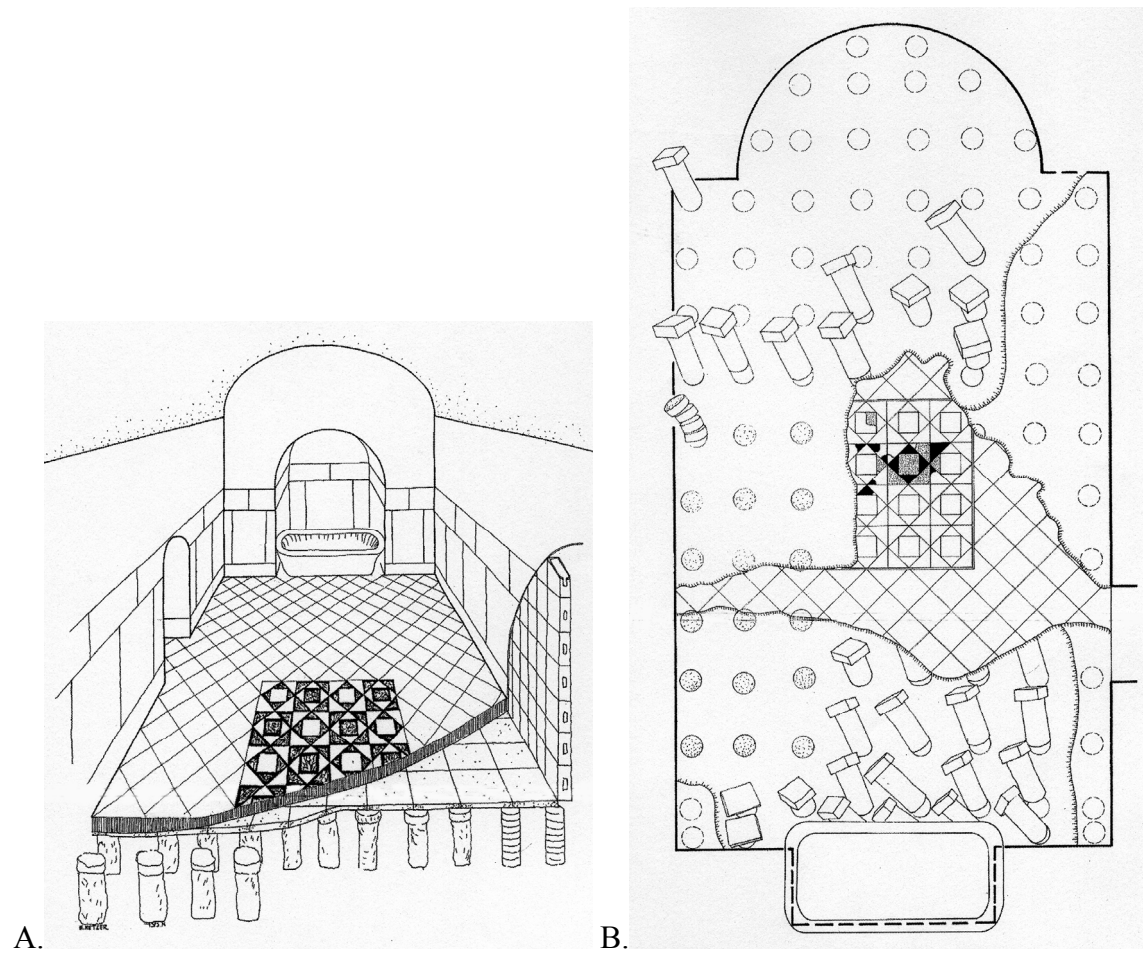


Fig. 8.11: Isometric (A) and plan (B) view of *caldarium* with tub (room 1 on fig. 8.10), Cypros #712 [Netzer 2001, figs 296-297].

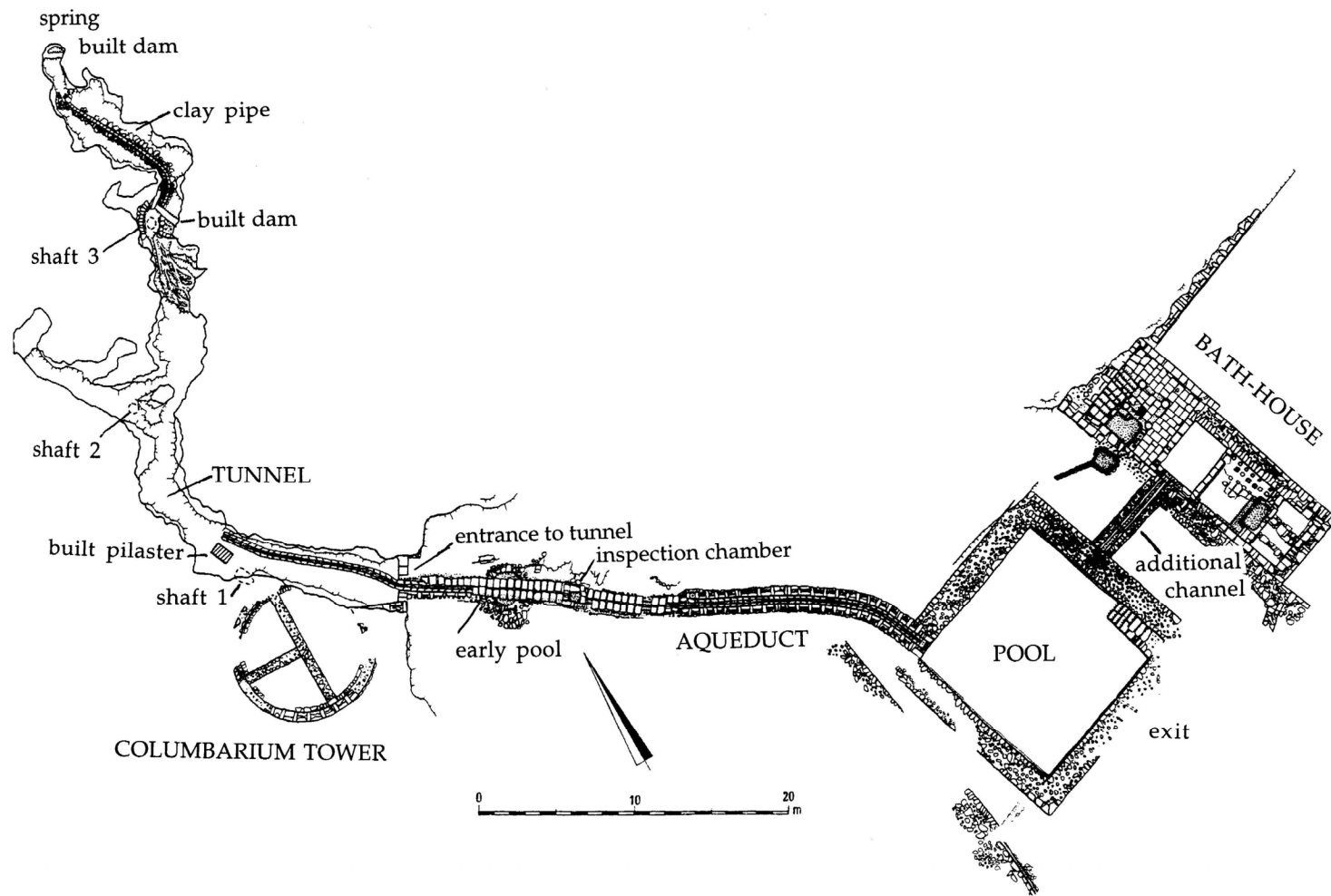


Fig. 8.12: Plan of the Ramat Hanadiv aqueduct, pool/reservoir and bathhouse complex (all phases) [Hirschfeld 2002b, fig. 3a].

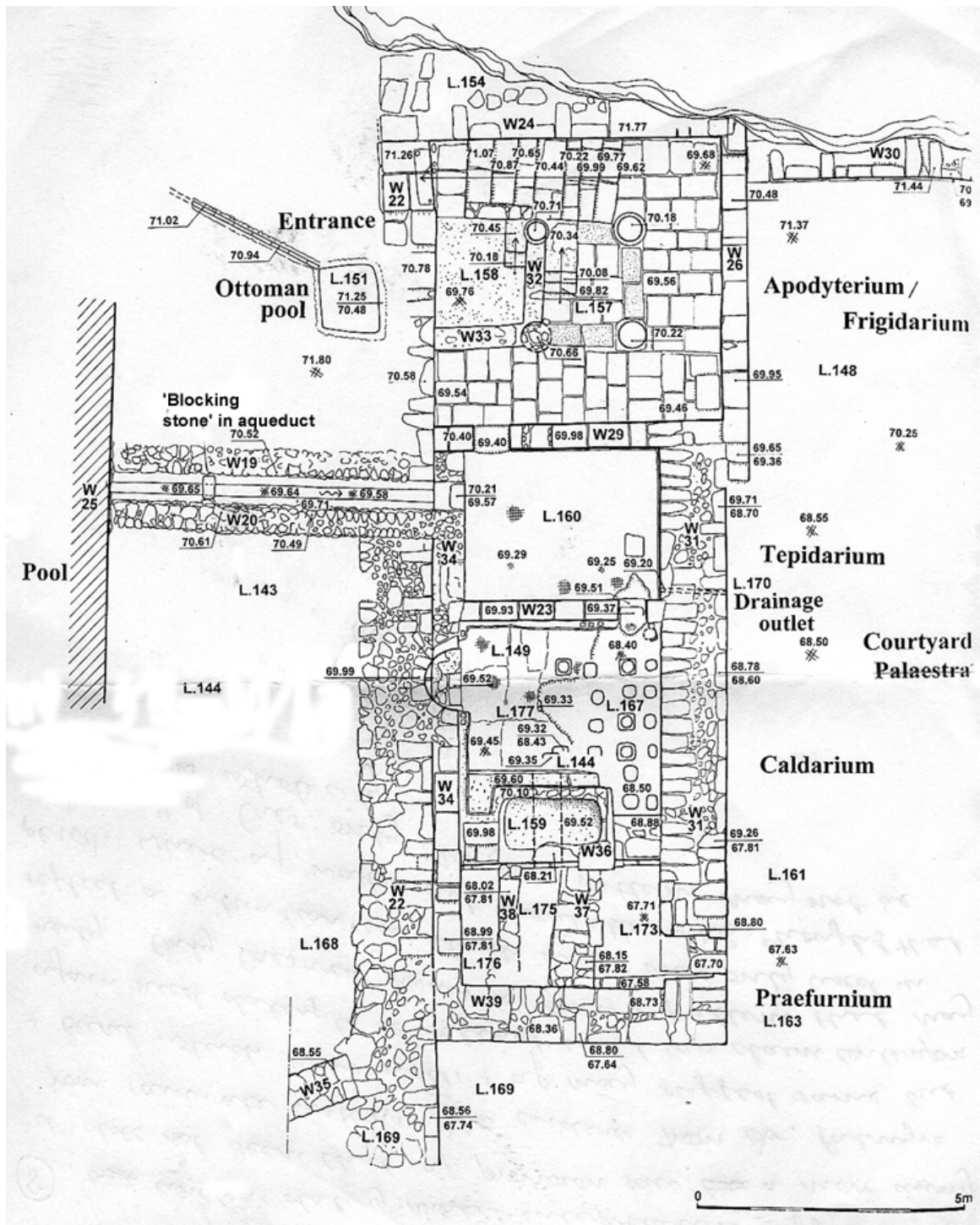


Fig. 8.13: Plan of the main bathhouse area, Ramat Hanadiv [after Hirschfeld 2000, fig. 180].

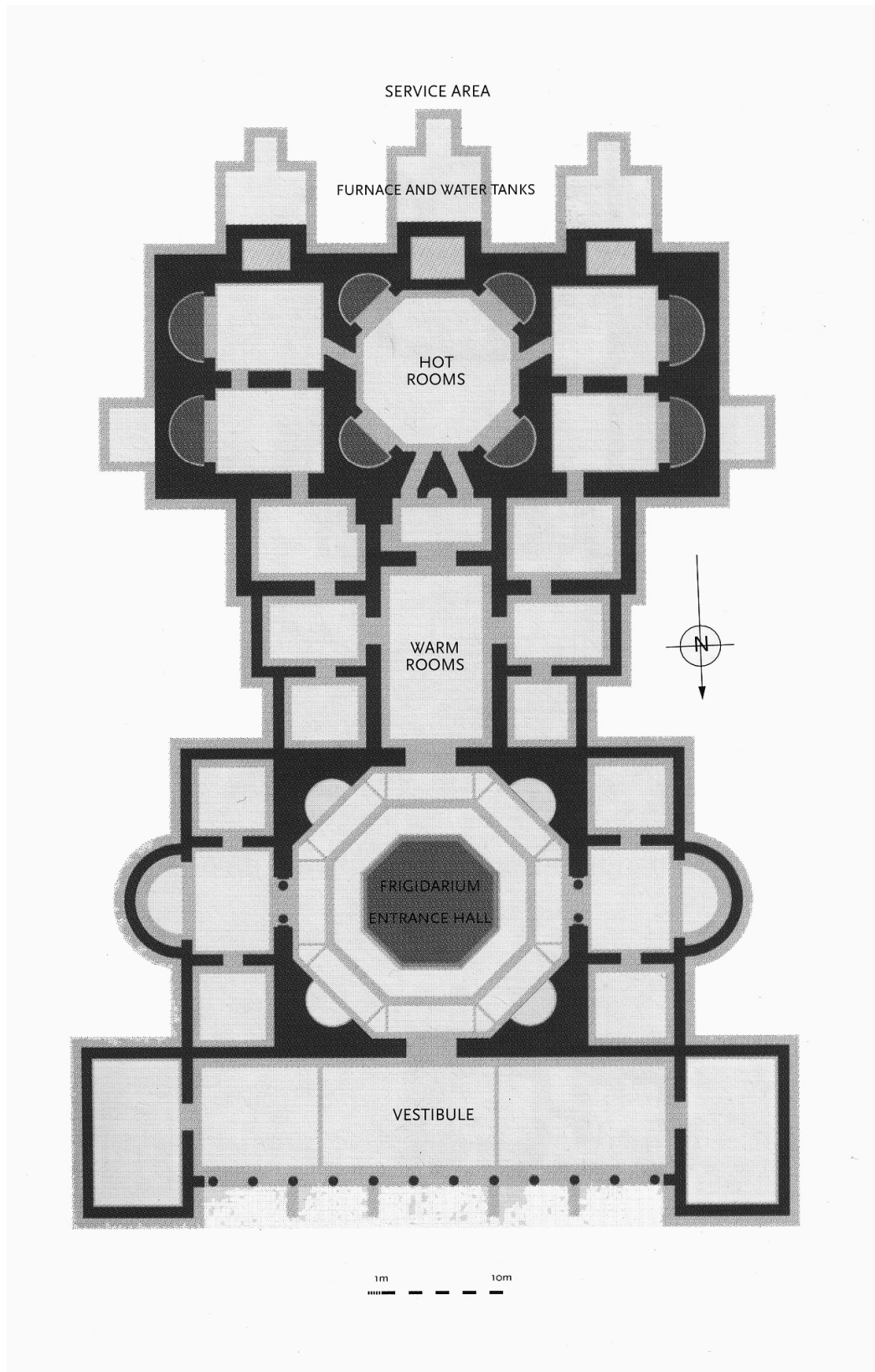


Fig. 8.14: Reconstructed plan of Antioch #240 [Yegül 2001, fig. 3].

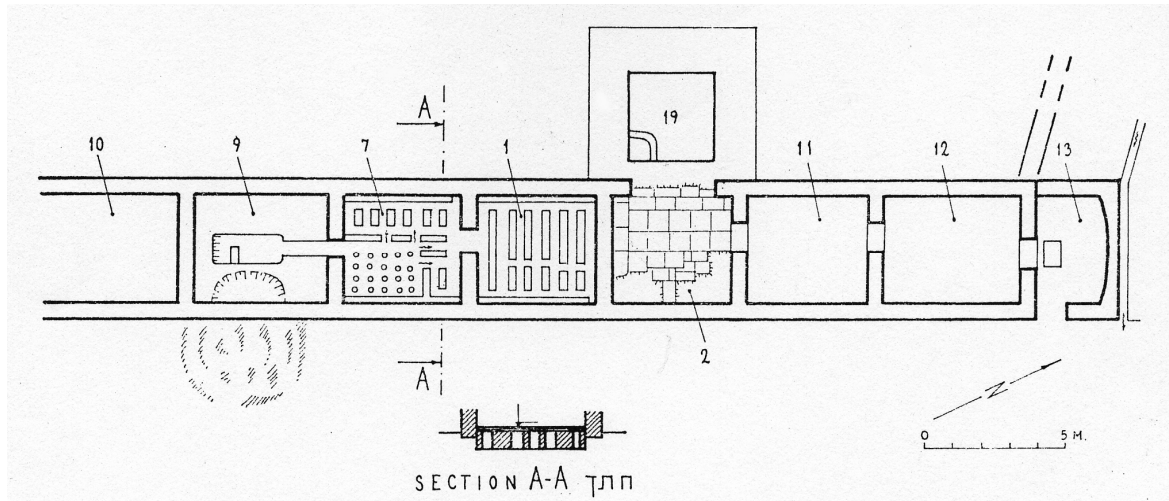


Fig. 8.15: Schematic plan of En Gedi bathhouse [Mazar and Dunayevsky 1967, fig. 3].

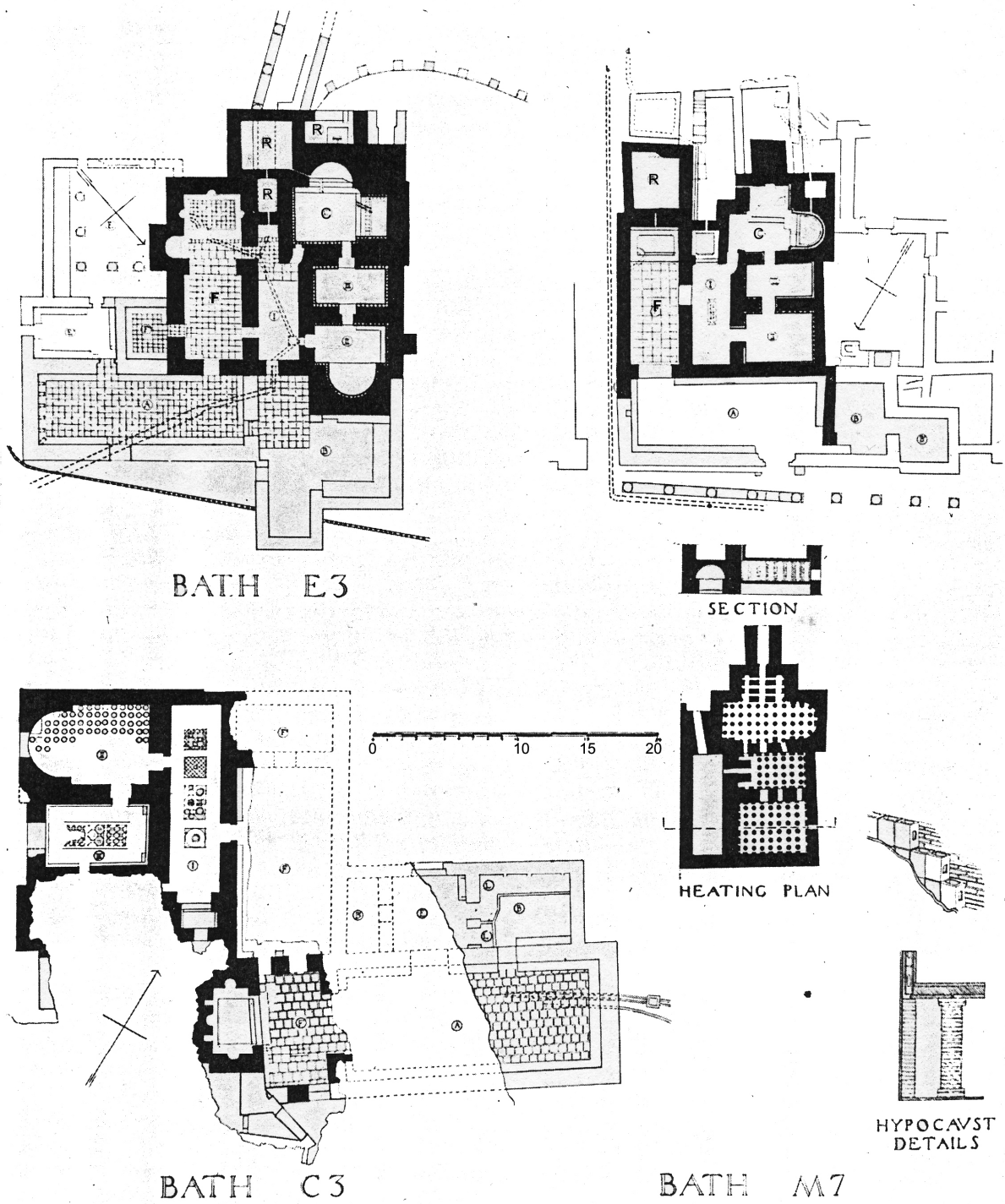


Fig. 8.16: Comparative plans of Dura Europos bathhouses E3 [#243], M7 [#245] and C3 [#246]. R = reservoir; C = caldarium; F = frigidarium [Rostovtzeff et al. 136, pl. 4].

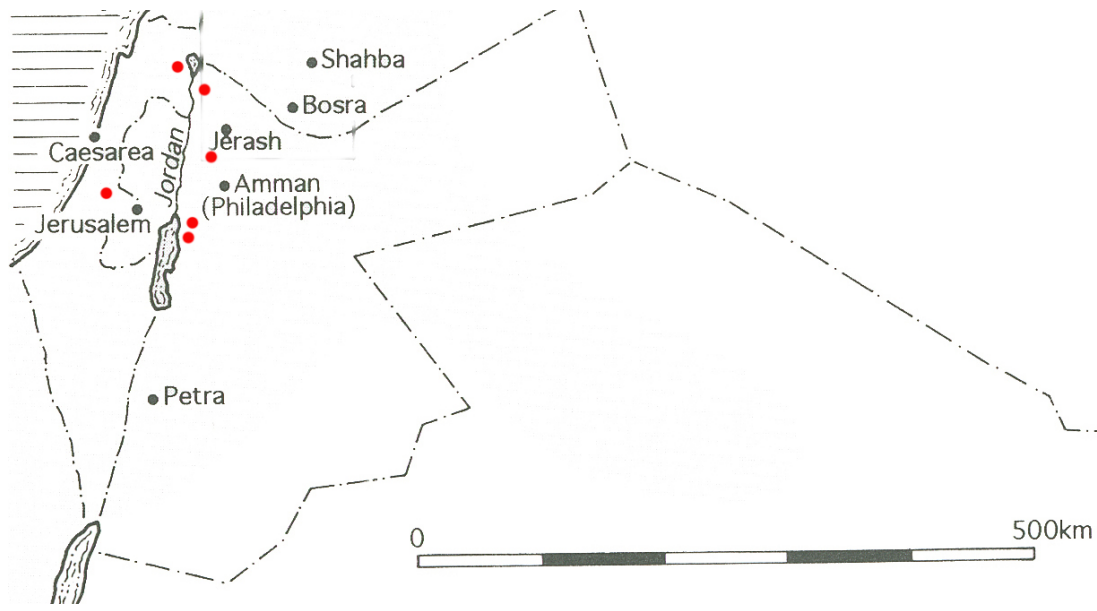


Fig. 8.17: Distribution map of thermal spas in the Near East [drawn: author].

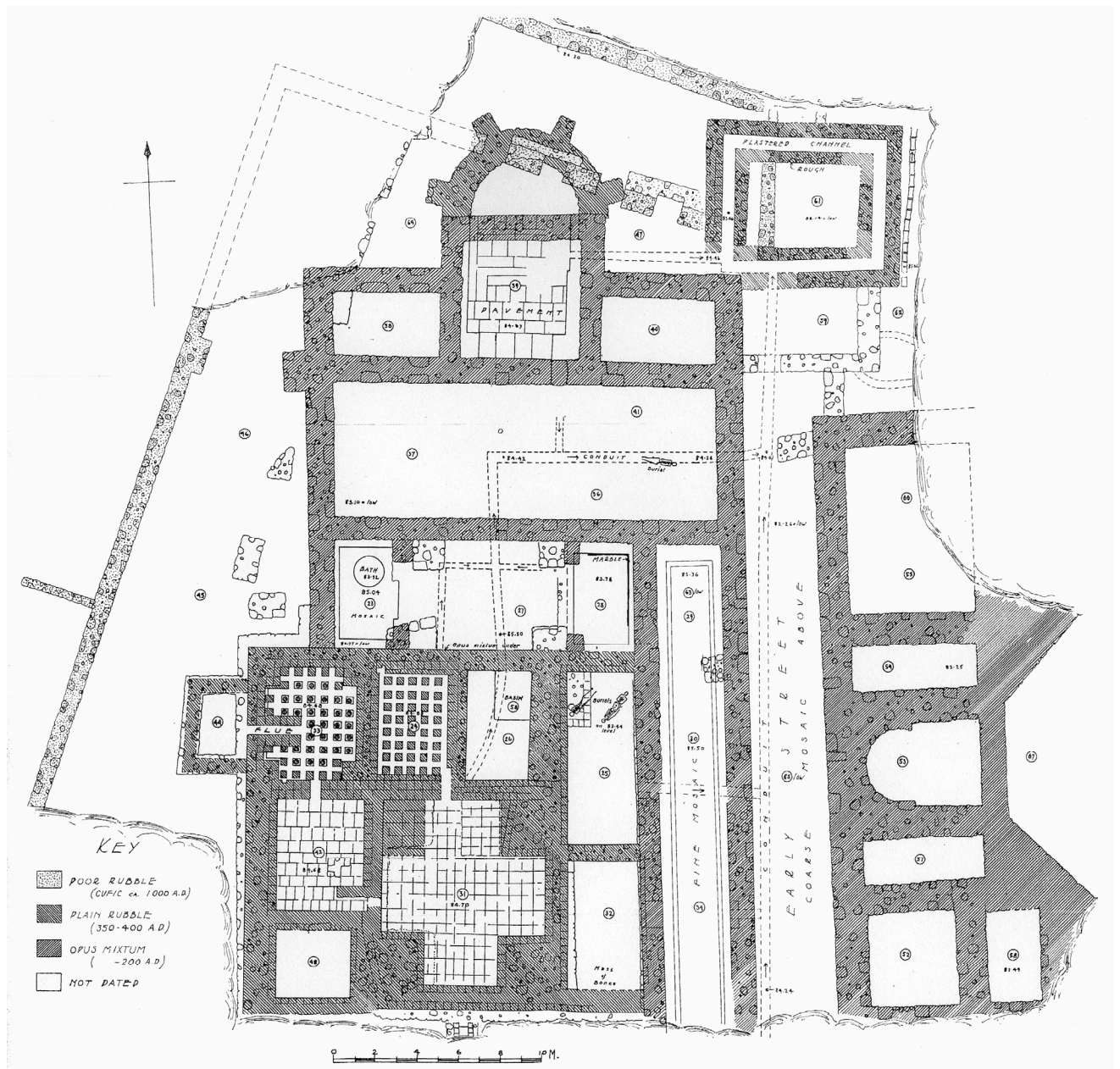


Fig. 8.18: Plan of Antioch #238 [Elderkin and Stillwell 1934, plate 3].

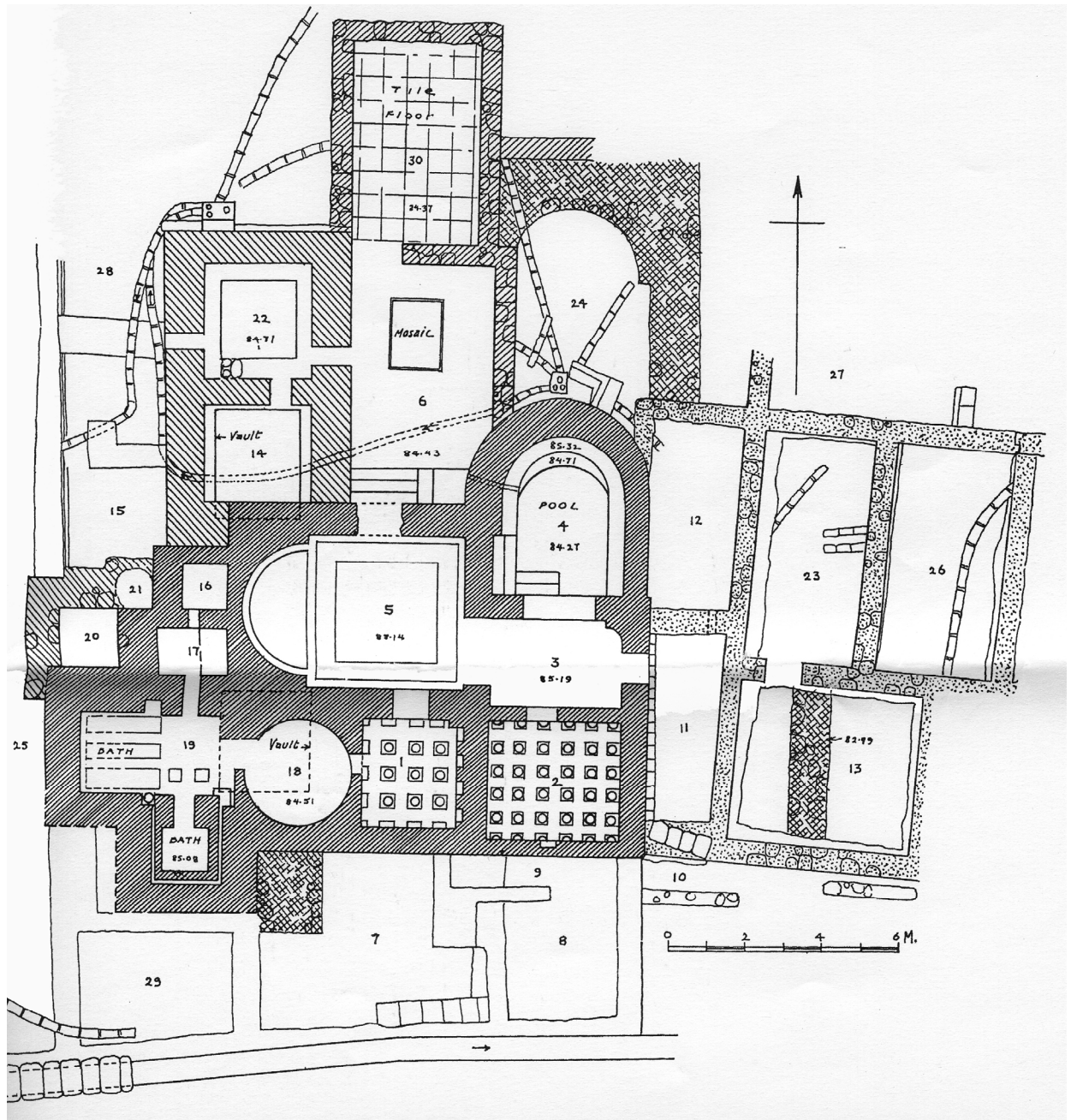


Fig. 8.19: Plan of Antioch #239 [Elderkin and Stillwell 1934, fig. 7].

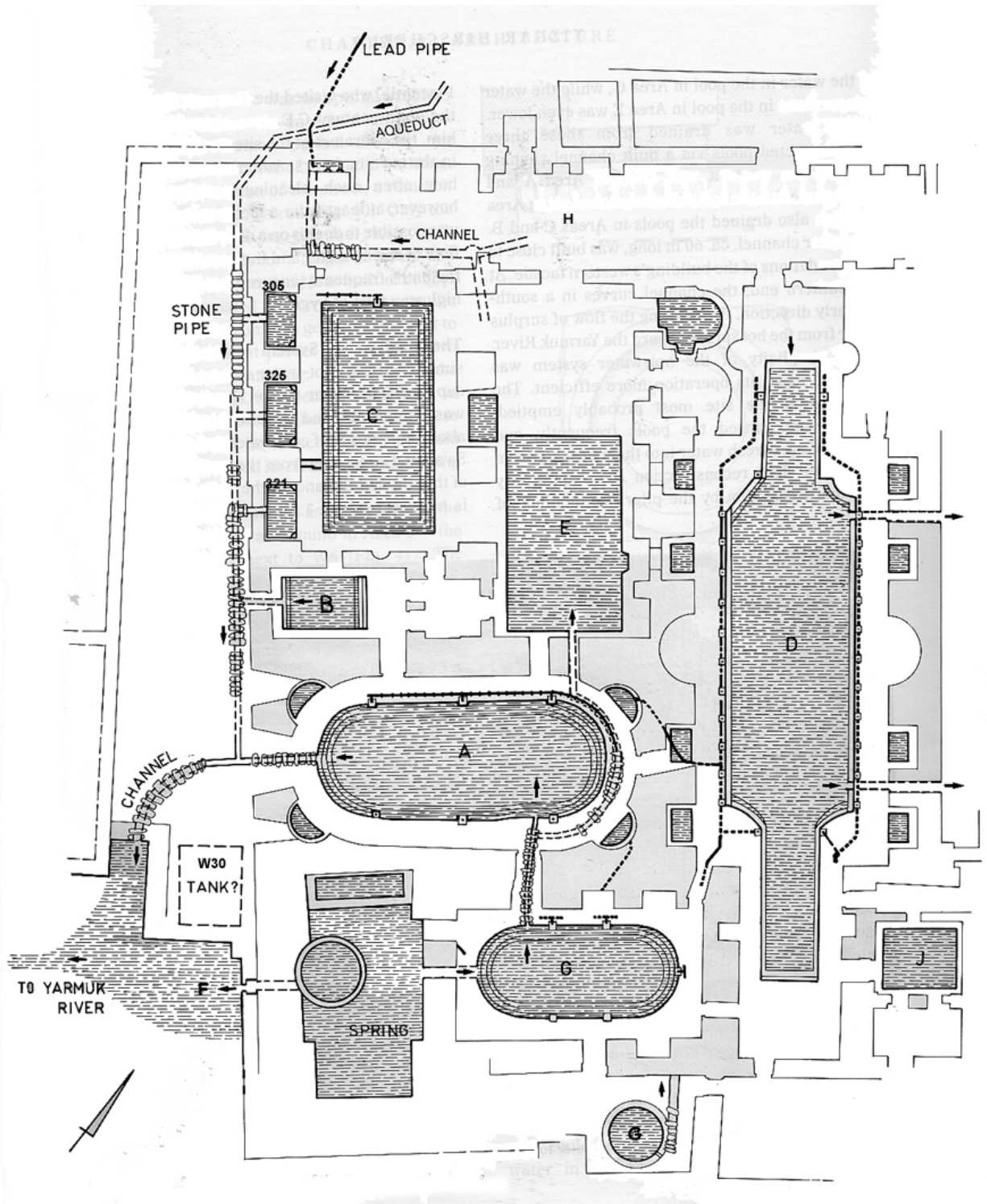


Fig. 8.20: Plan of the Hammat Gader baths [after Hirschfeld 1997, fig. 39].