



Fig. 8.21: Lead pipe network feeding fountain at the edge of the pool in Area D [Hirschfeld 1997, fig. 45].



Fig. 8.22: Lead pipe in fountain base (possibly a reused altar or statue base), Bosra [photo: author].



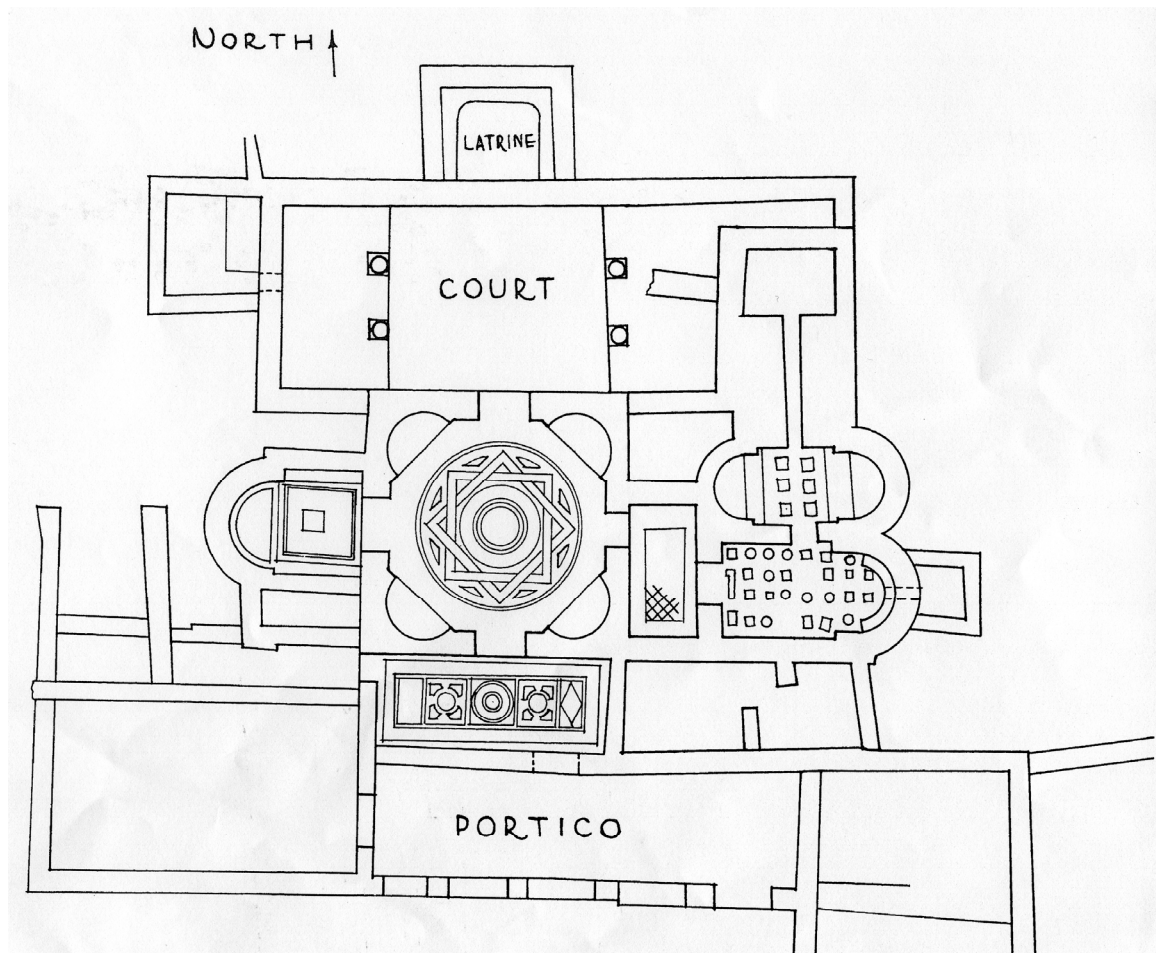


Fig. 8.23: Plan of the Toprak an-Narlidja bathhouse, near Antioch. Scale 1:100 [Stillwell 1941, plan 5].

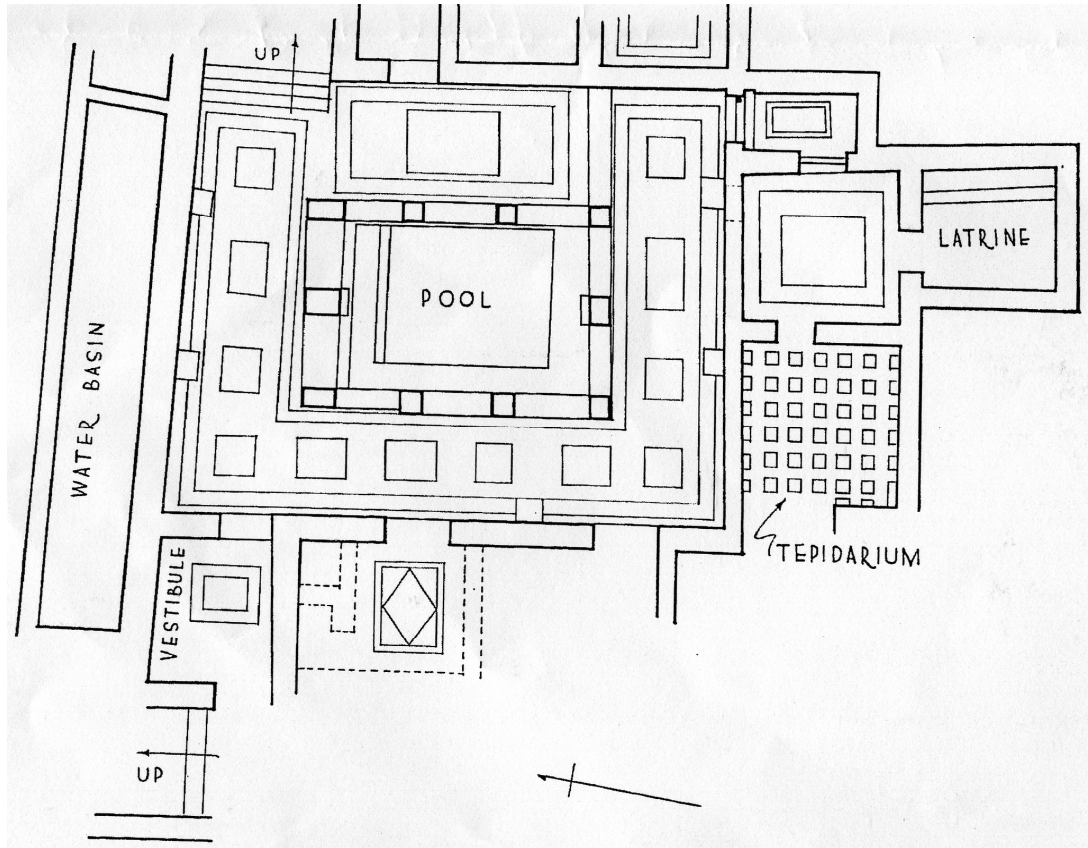


Fig. 8.24: Plan of the Jekmejev bathhouse, near Antioch. Scale 1:200 [Stillwell 1941, plan 6].





Fig. 8.25: Channel running around exterior of the bathhouse at Serjilla [photo: author].





Fig. 8.26: Apsidal pool inside the Serjilla bathhouse fed by the external channel entering through the window-sill. Note the small size of the pool as is typical of late Roman bathhouses [photo: author].



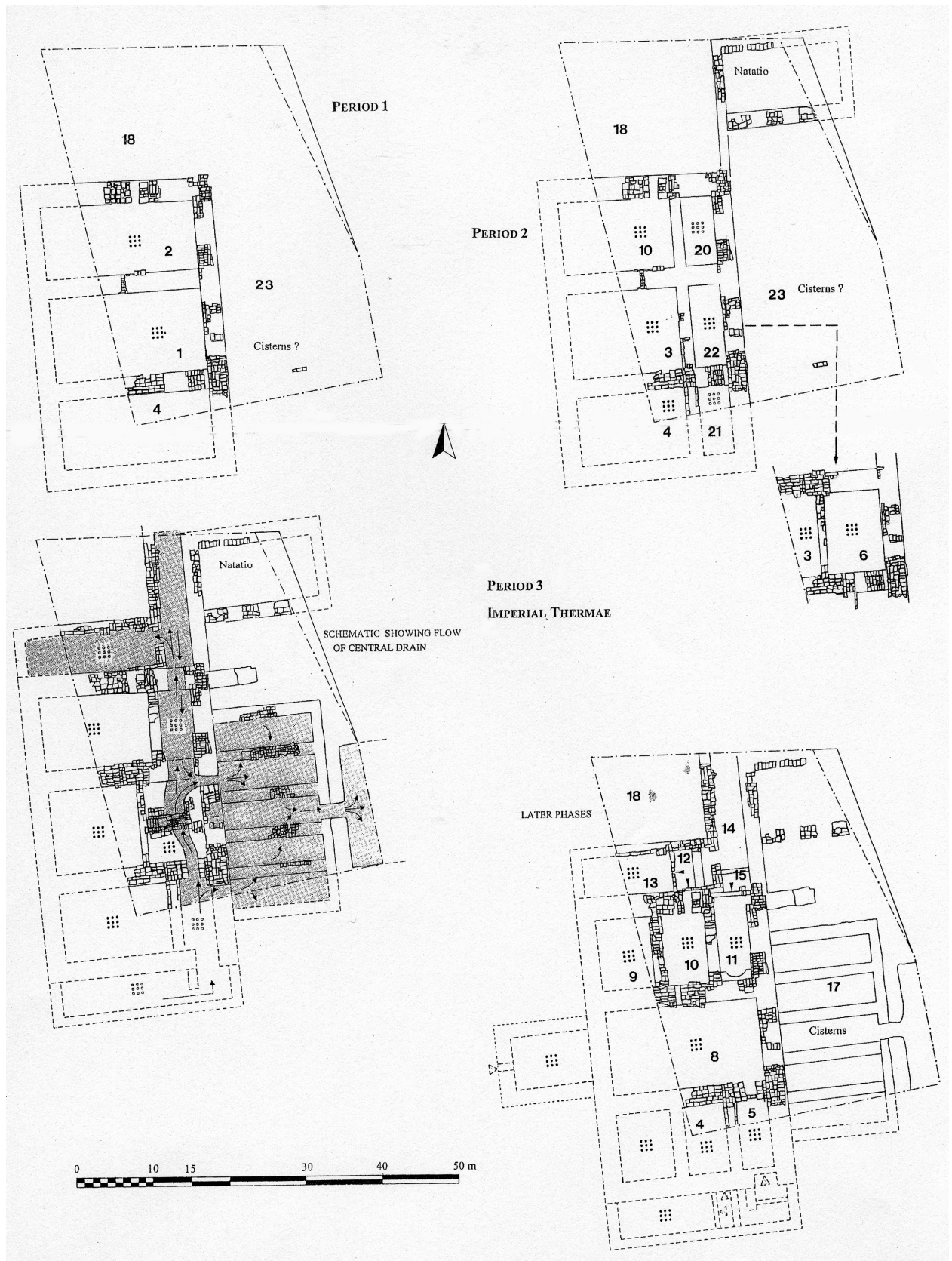
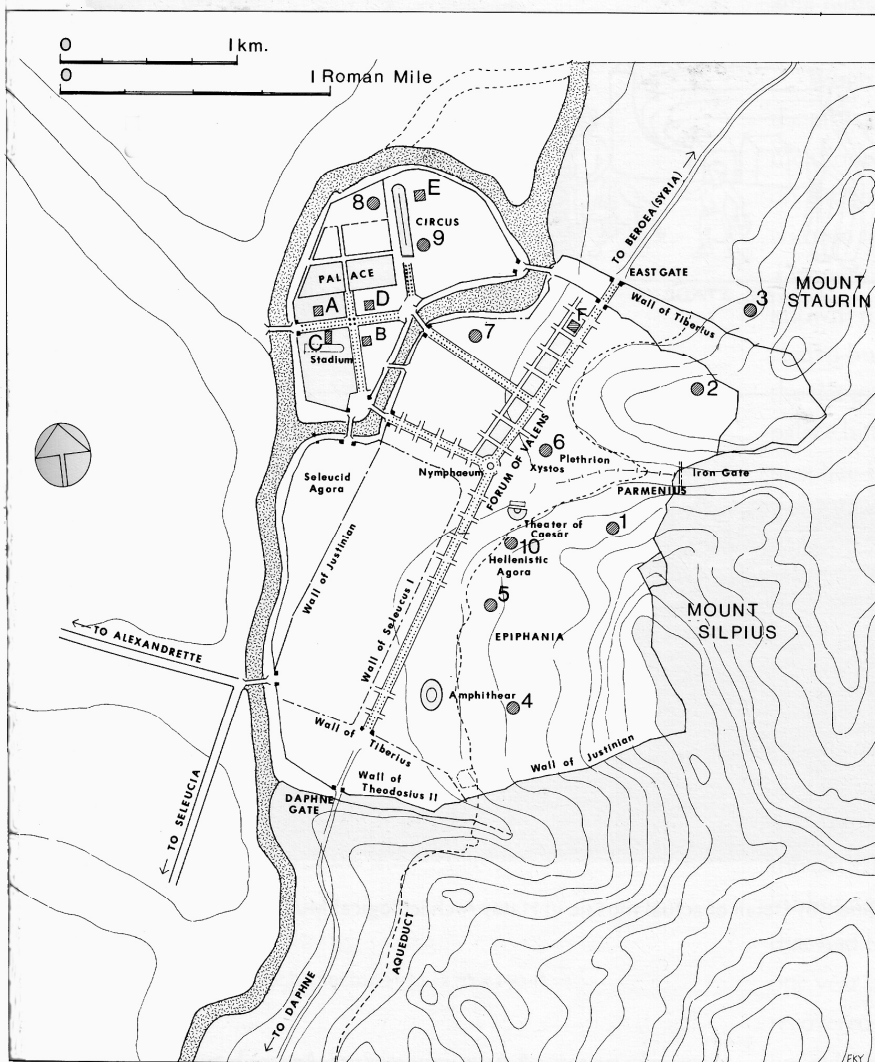


Fig. 8.27: Successive building phases in the Beirut bathhouse [Thorpe 1998-9, fig. 13].



Baths excavated by the Princeton expedition:

- A. Bath A
- B. Bath B
- C. Bath C
- D. Bath D
- E. Bath E
- F. Bath F

Baths mentioned in Malalas:

- 1. Baths of Julius Caesar
- 2. Baths of Agrippa
- 3. Baths of Tiberius
- 4. Baths of Domitian
- 5. Baths of Trajan/Hadrian
- 6. Baths of Commodus
- 7. Baths of Septimius Severus
- 8. Baths of Diocletian
- 9. Baths of Valens
- 10. Baths of Governor Olbia

Fig. 8.28: Plan of Antioch showing locations of baths excavated by the Princeton expedition and hypothetical locations of baths mentioned by Malalas [Yegül 2001, fig.1].



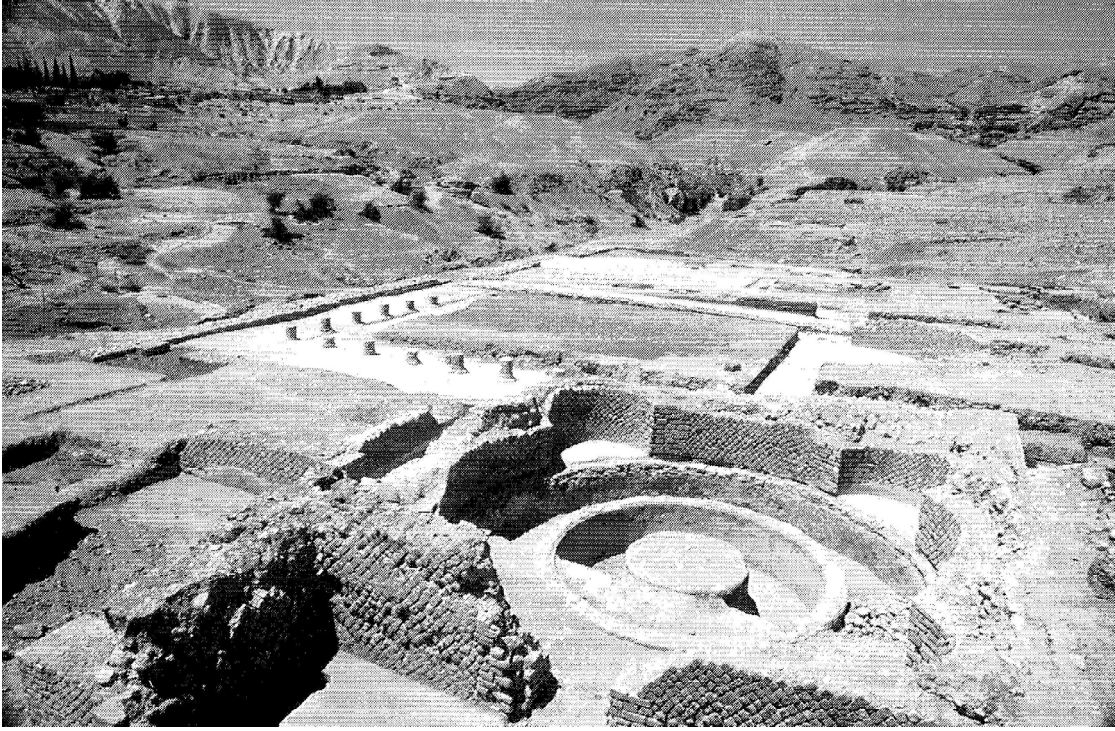


Fig. 8.29: *Opus reticulatum* in bathhouse at Herod's Third Palace, Jericho [Netzer 2002, fig. 1].

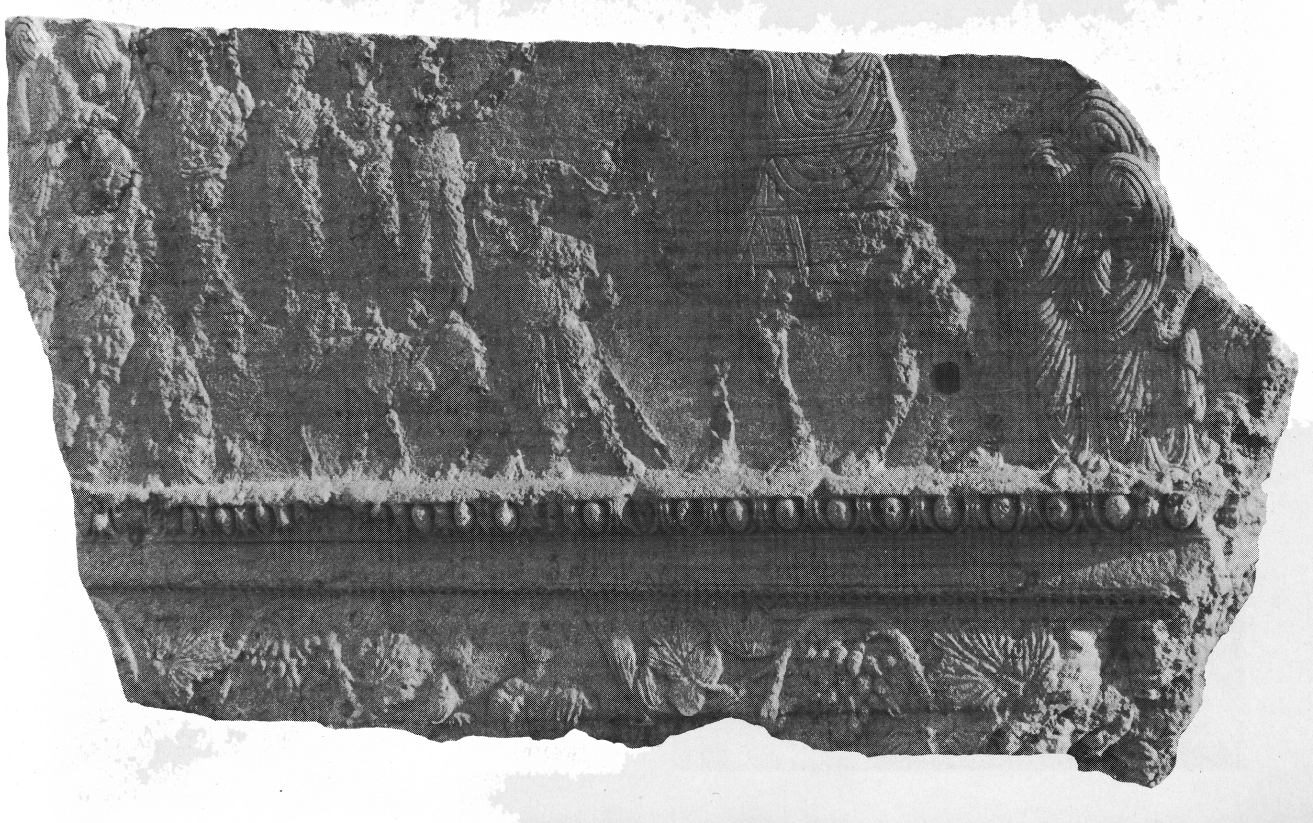


Fig. 8.30: Relief of a religious procession from the Temple of Bel, Palmyra with two groups of figures fully swathed in veils on the right-hand side and top left-hand corner [Colledge 1976, fig. 20].





Fig. 8.31: Marble statue of Hygieia from Bath F, Antioch [#723] [Vermeule 2001, p. 90].

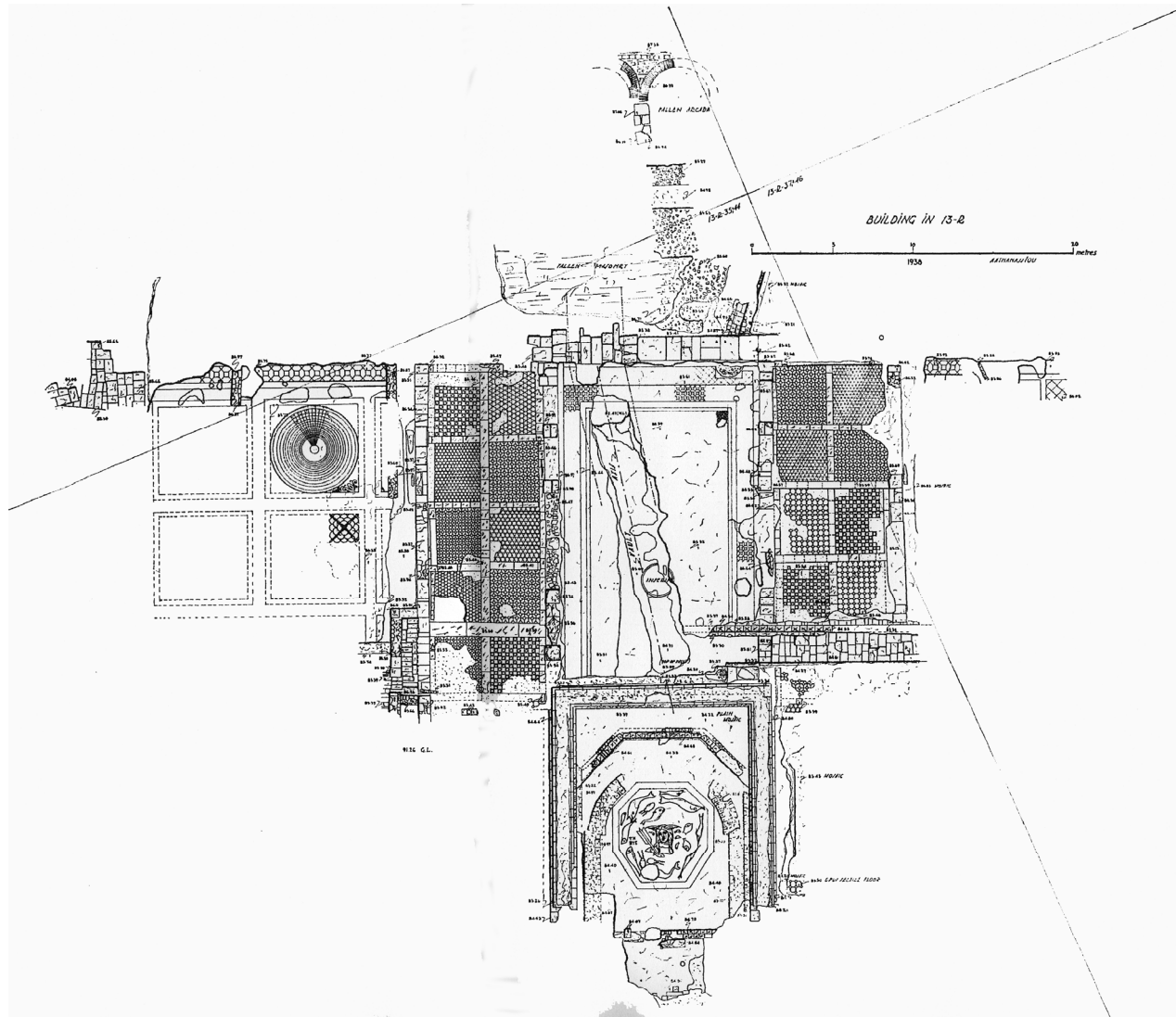


Fig. 8.32: Plan of Bath F, Antioch [#723] showing location of Tethys and fishes mosaic [Stillwell 1941, plan 2].



Fig. 8.33: Bath tub with painted inscription, Ashqelon [Stager 1991, 46].

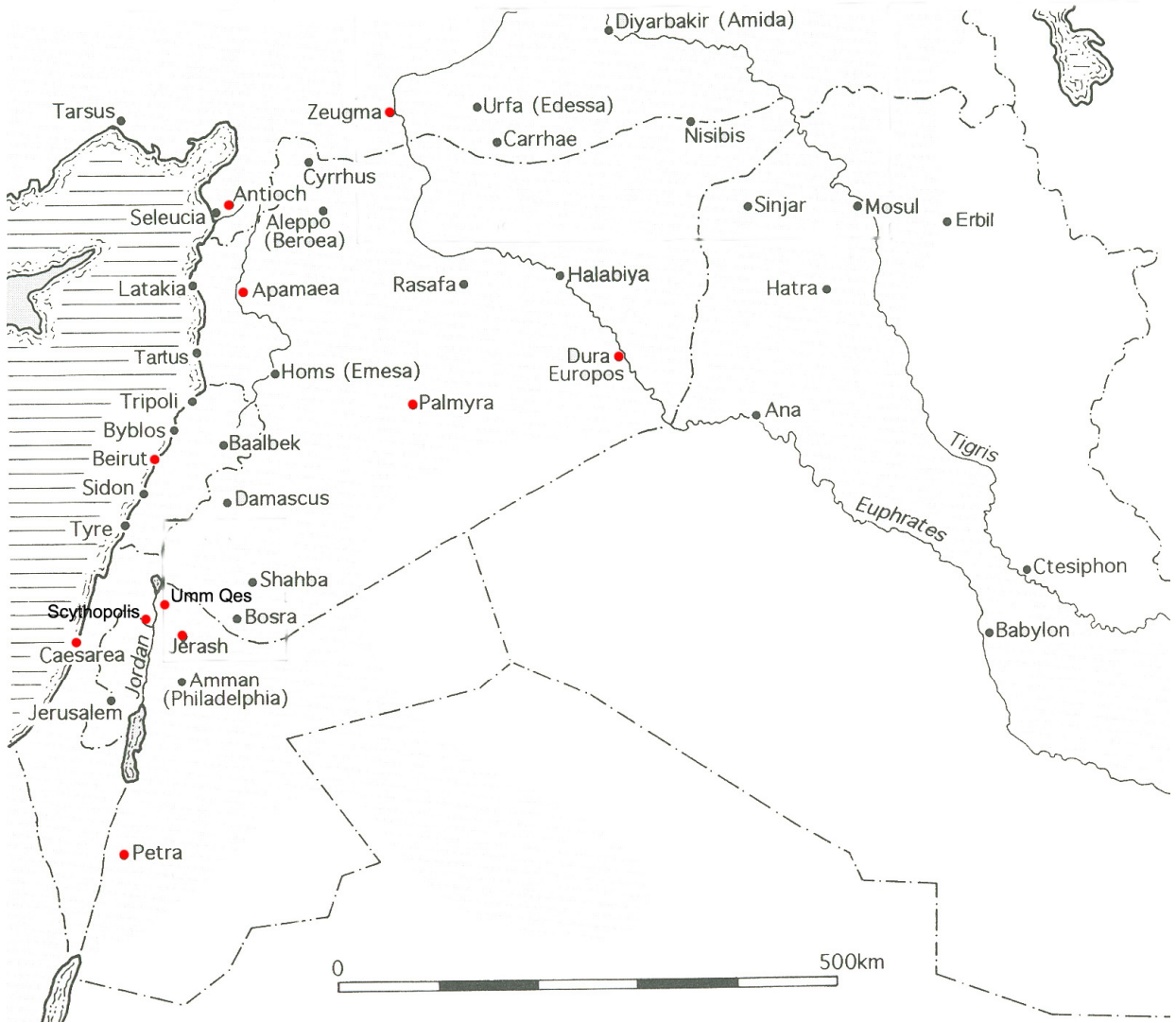


Fig. 8.34: Map of the Near East showing sites in Table 8.7 [drawn: author].





Fig. 8.35: View of Palmyra showing extent of excavation, largely restricted to the main streets [photo: author].

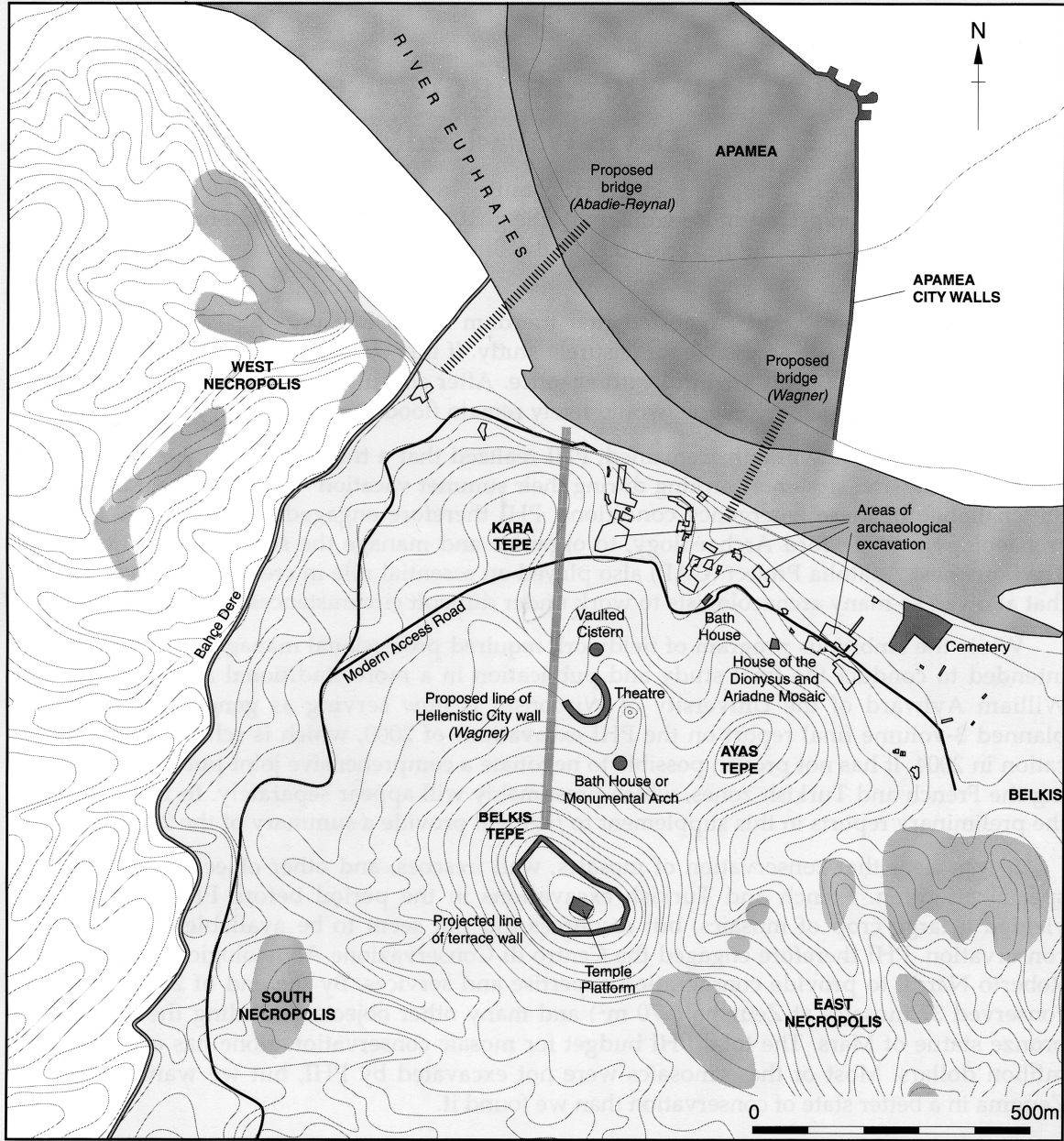


Fig. 8.36: Topographic plan of Zeugma showing the (limited) extent of excavation on the site mostly restricted to the zone flooded by the Birecik dam in 2000 [Early and Humphrey 2003, fig. 1].



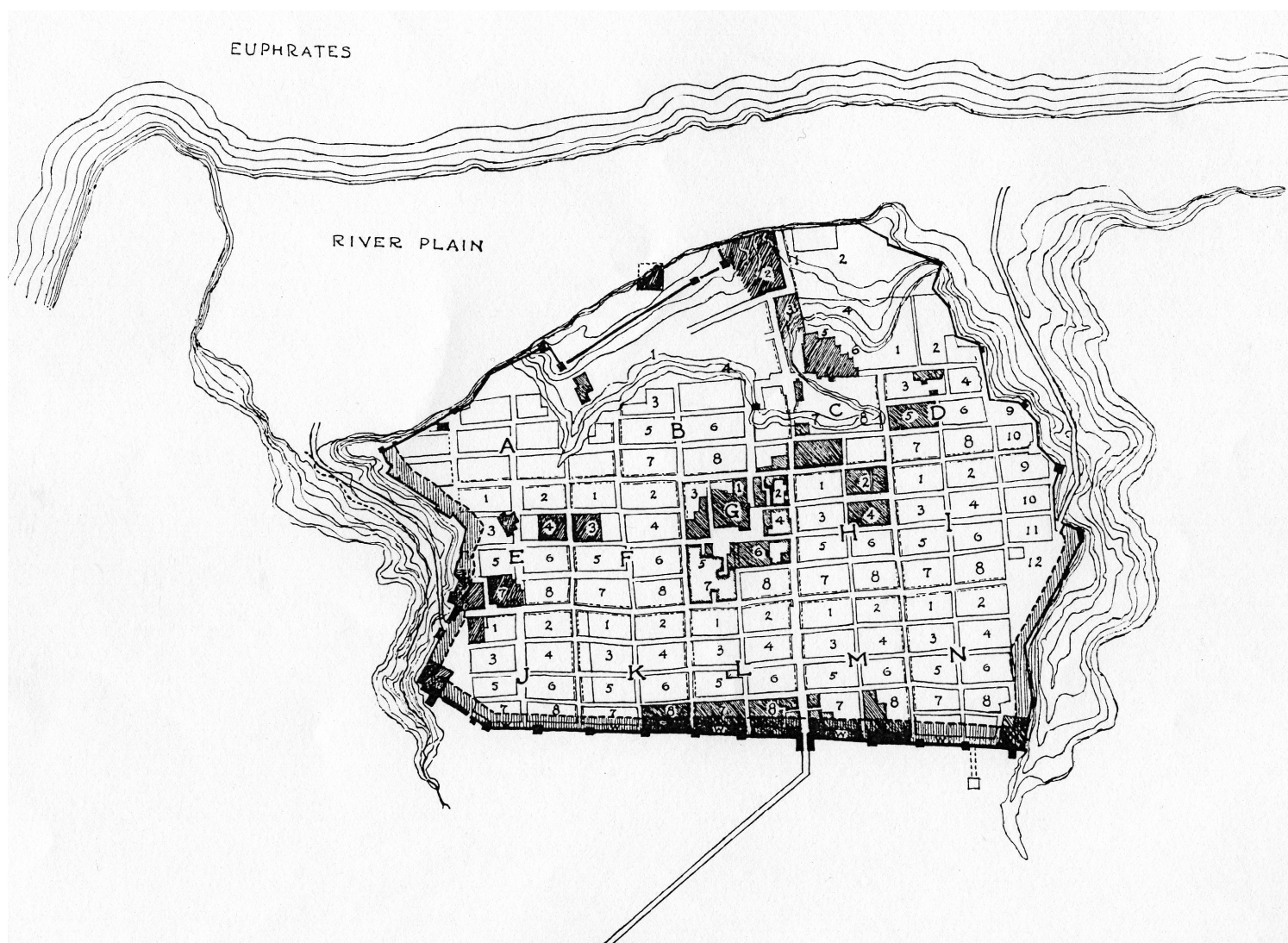


Fig. 8.37: Plan of Dura Europos showing locations of city blocks [Rostovtzeff *et al.* 1936, pl. 1].



