

Chapter 9

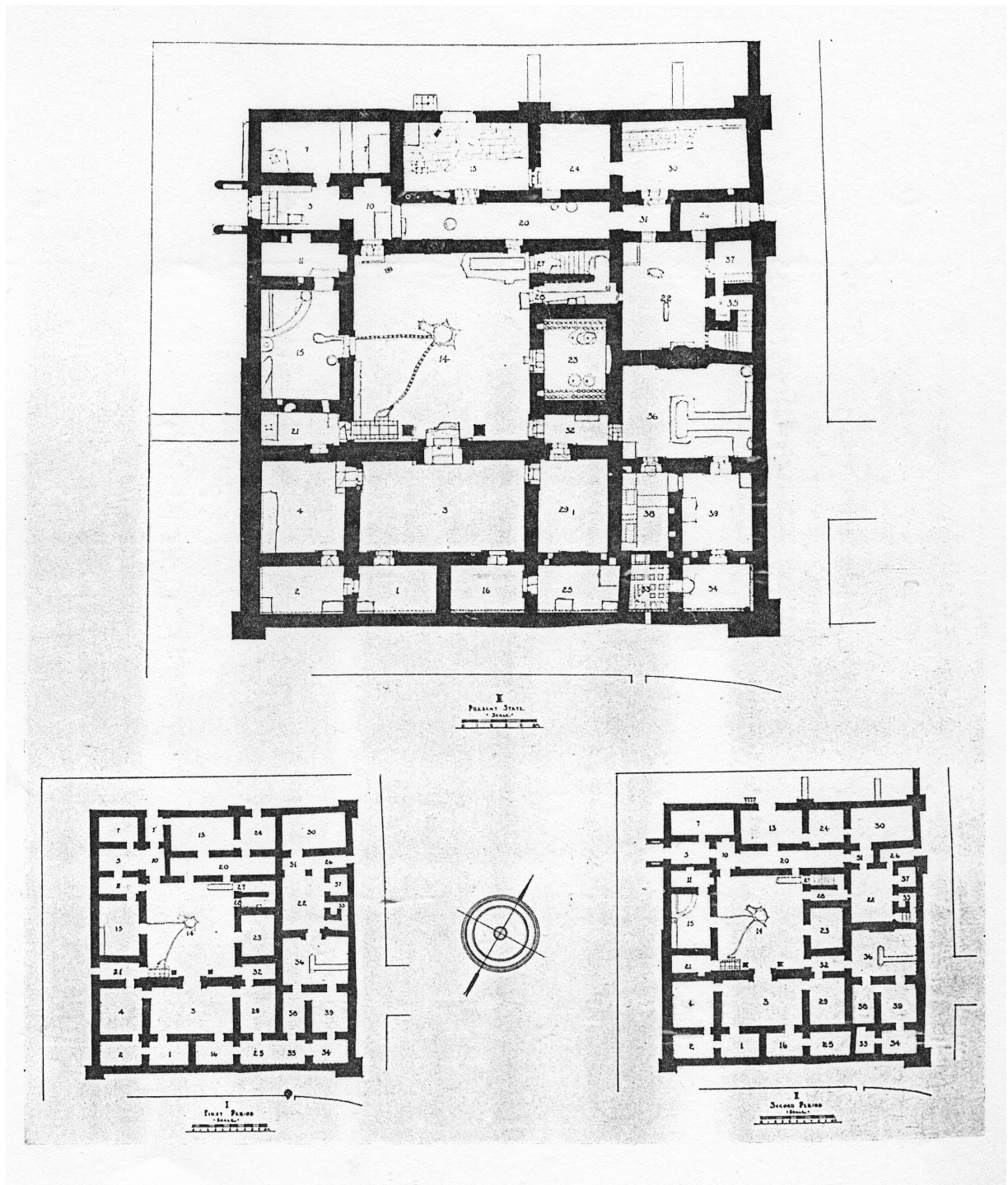


Fig. 9.1: Plan of house #379 from Dura Europos showing typical location of cistern in courtyard [Hopkins 1936, plan II].

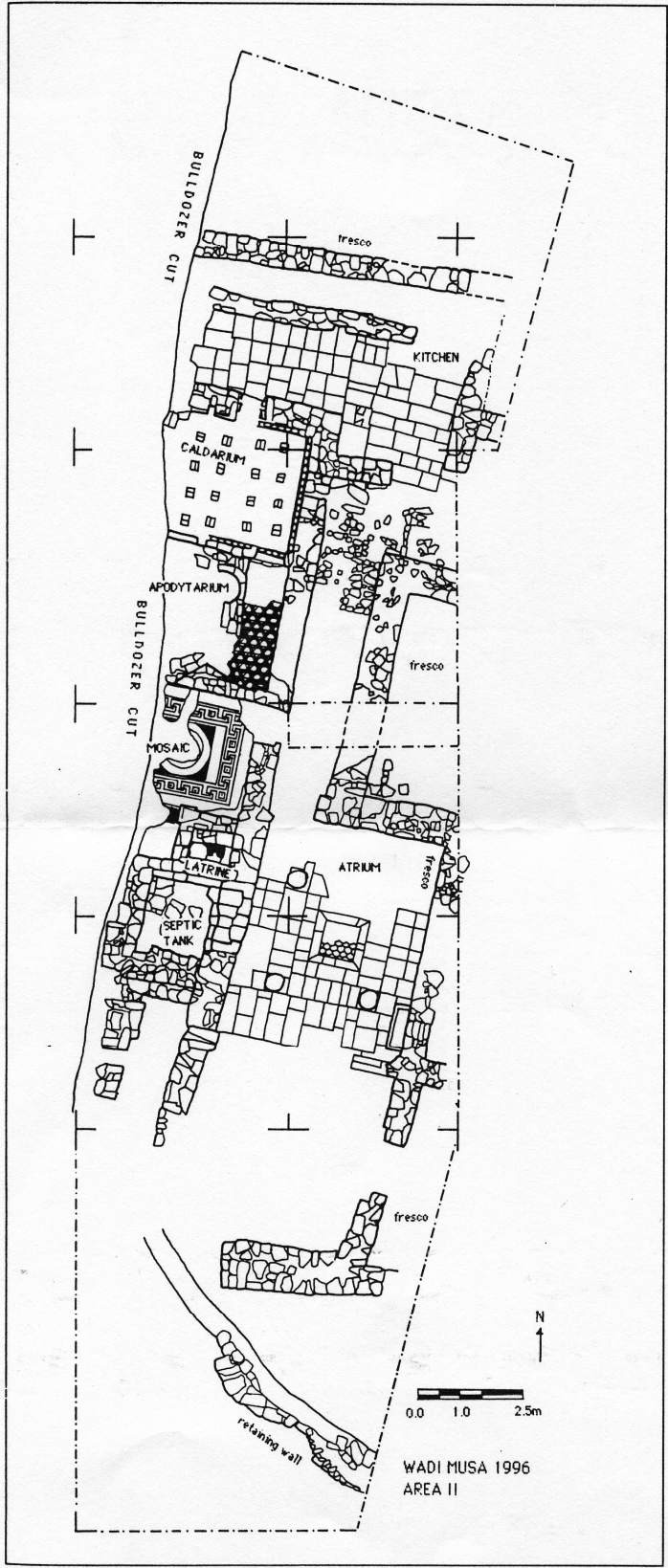


Fig. 9.2: Plan of house #424, Petra [Amr *et al.* 1997, fig. 2].

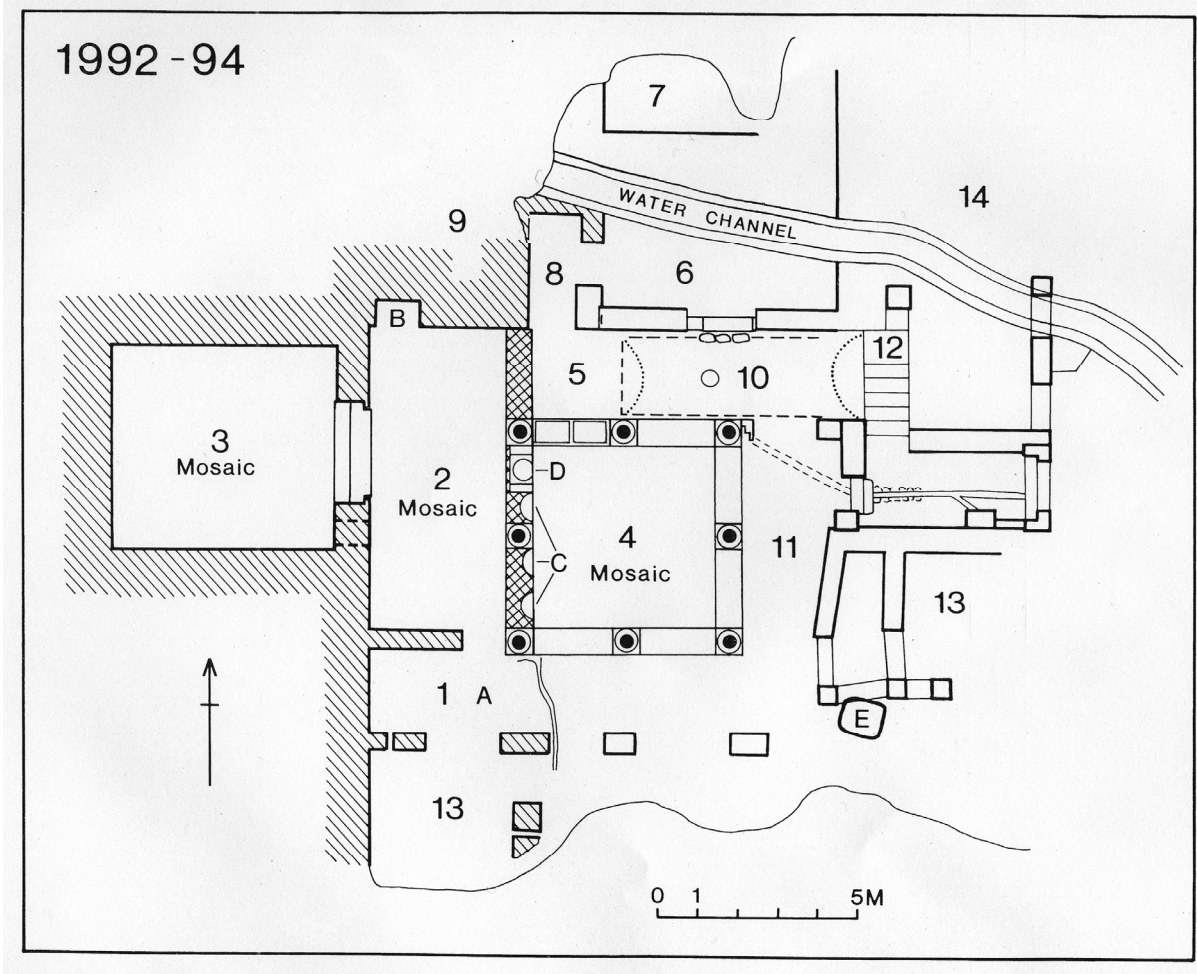


Fig. 9.3: Plan of house #405, Zeugma [Ergeç 1998, fig. 5.3].

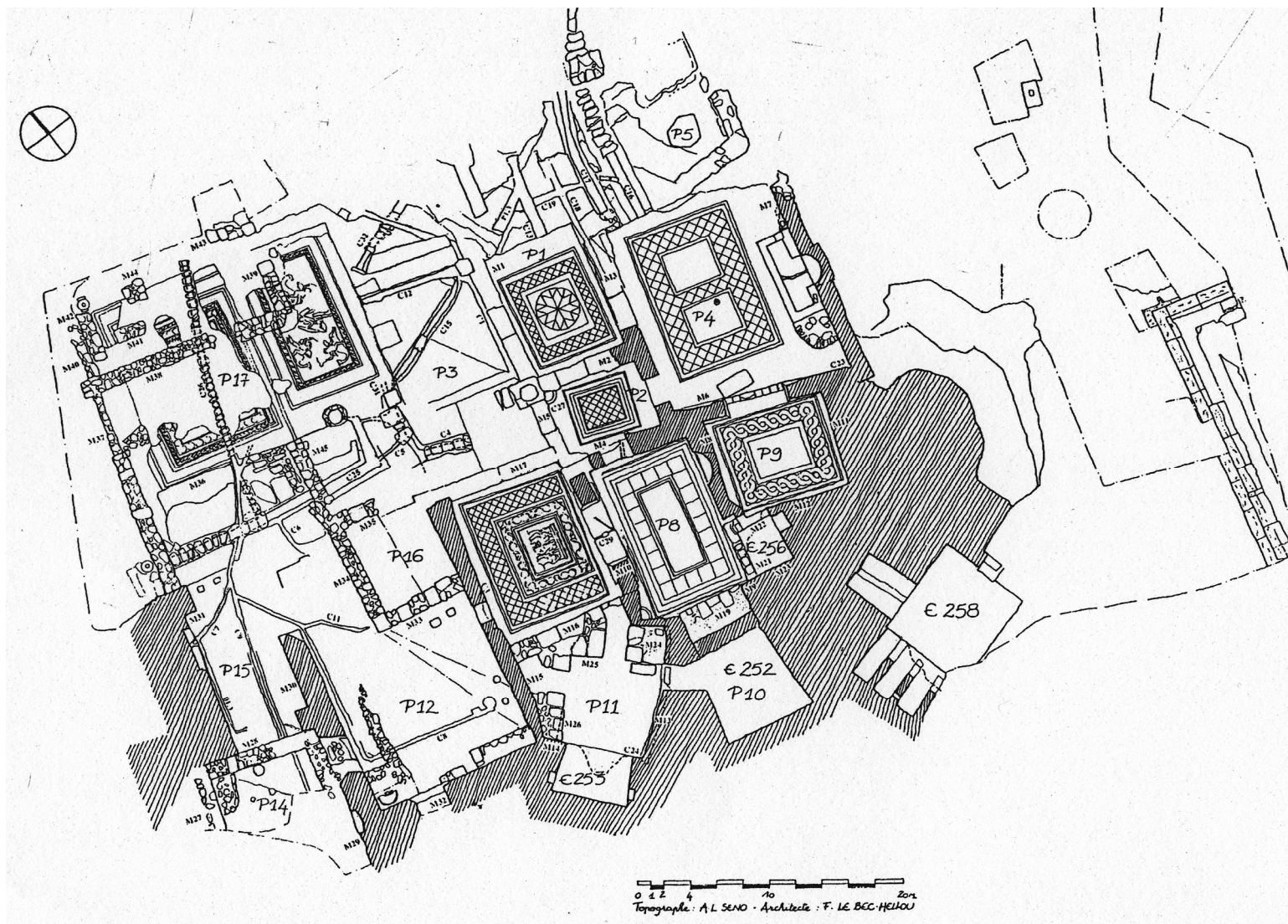


Fig. 9.4: Plan of house #413, Zeugma [Abadie-Reynal *et al.* 2001, fig. 2.2].

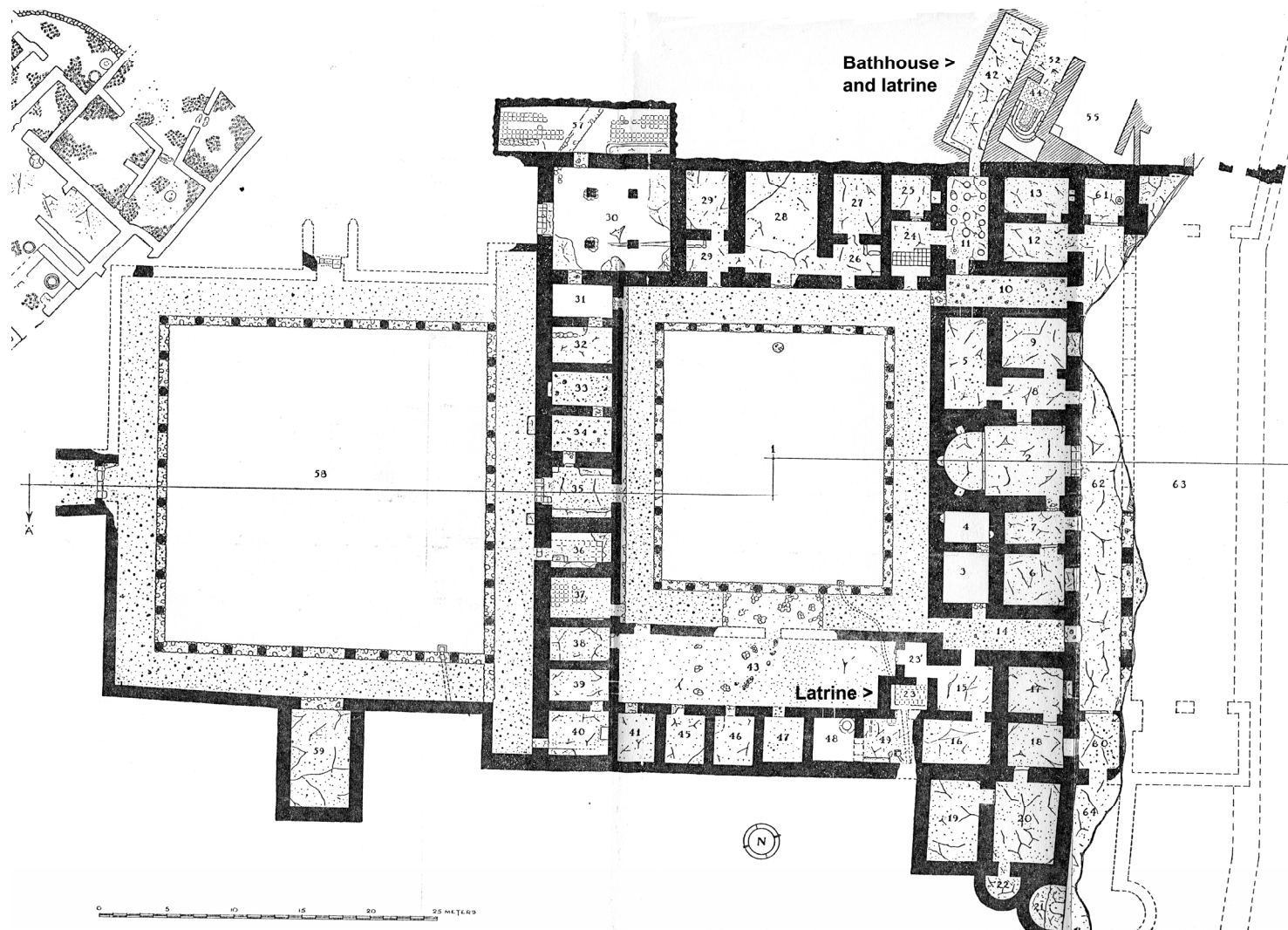


Fig. 9.5: Plan of the palace of the *Dux Ripae*, Dura Europos, showing the locations of the bathhouse and latrines [After Detweiler 1952, fig. 7].

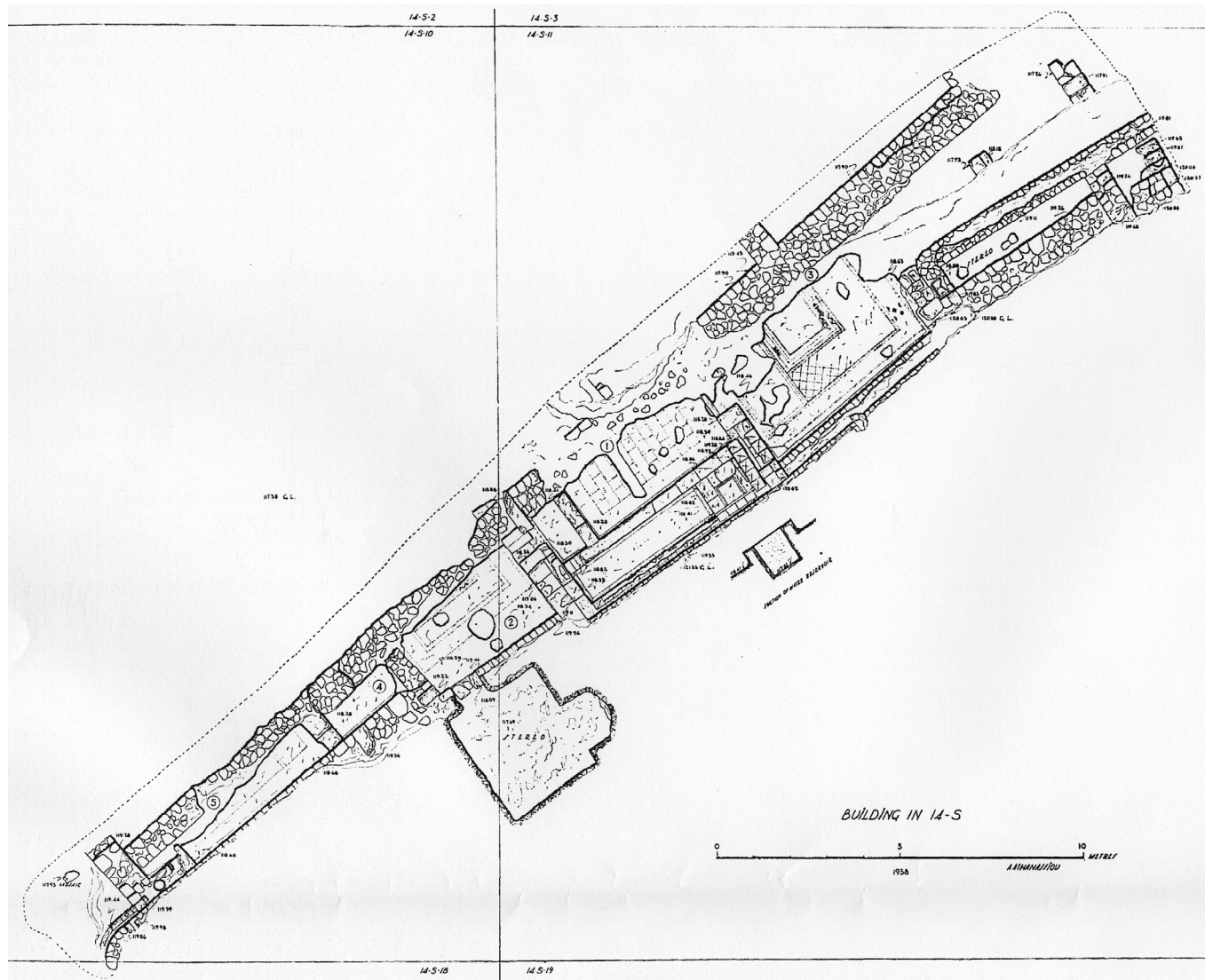


Fig. 9.6: Plan of the House of Iphigenia [#451], Antioch [Stillwell 1941, plan 3].

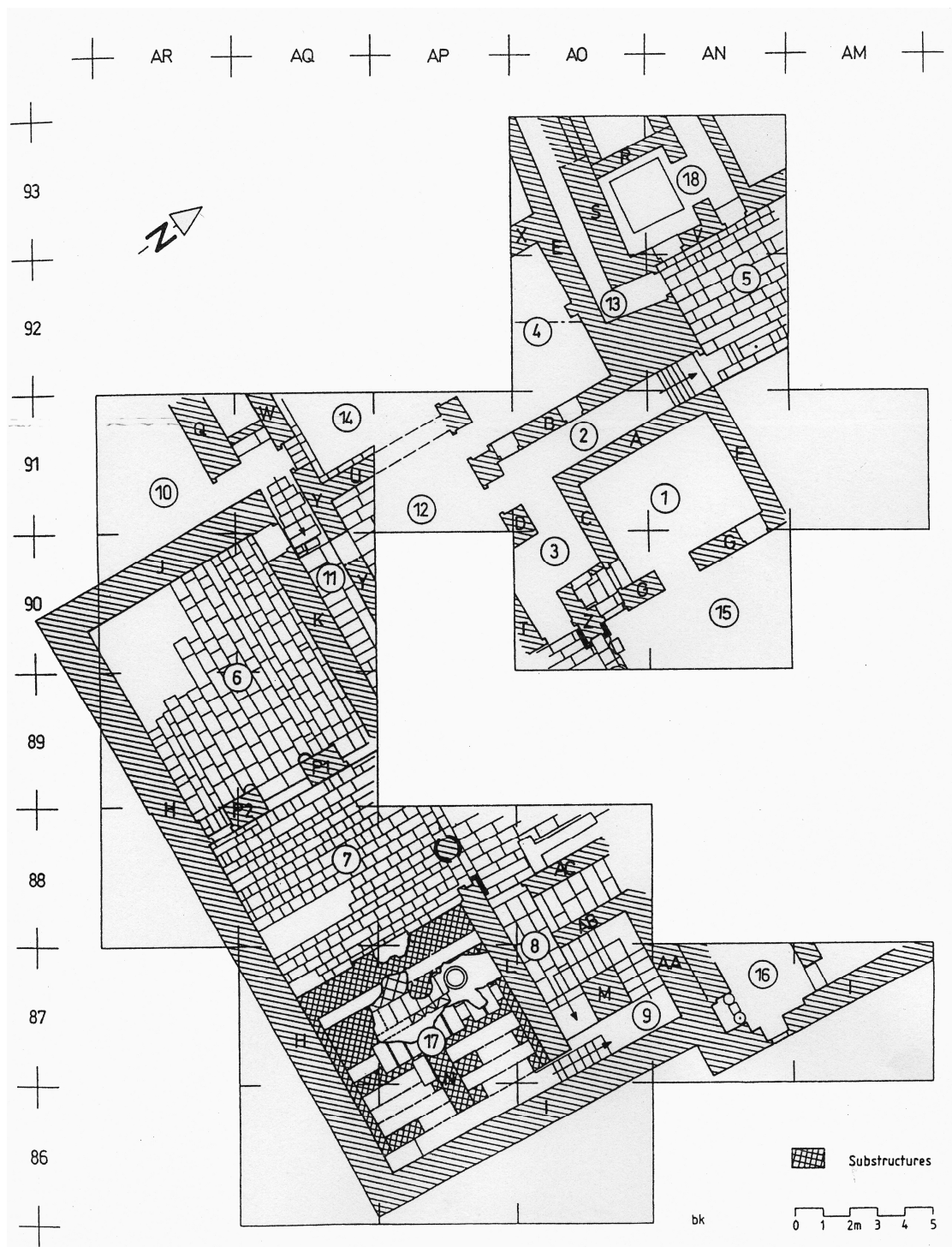


Fig. 9.7: Plan of house #425, Petra; a cistern was excavated under room 17 [Kolb *et al.* 1999, fig.1].

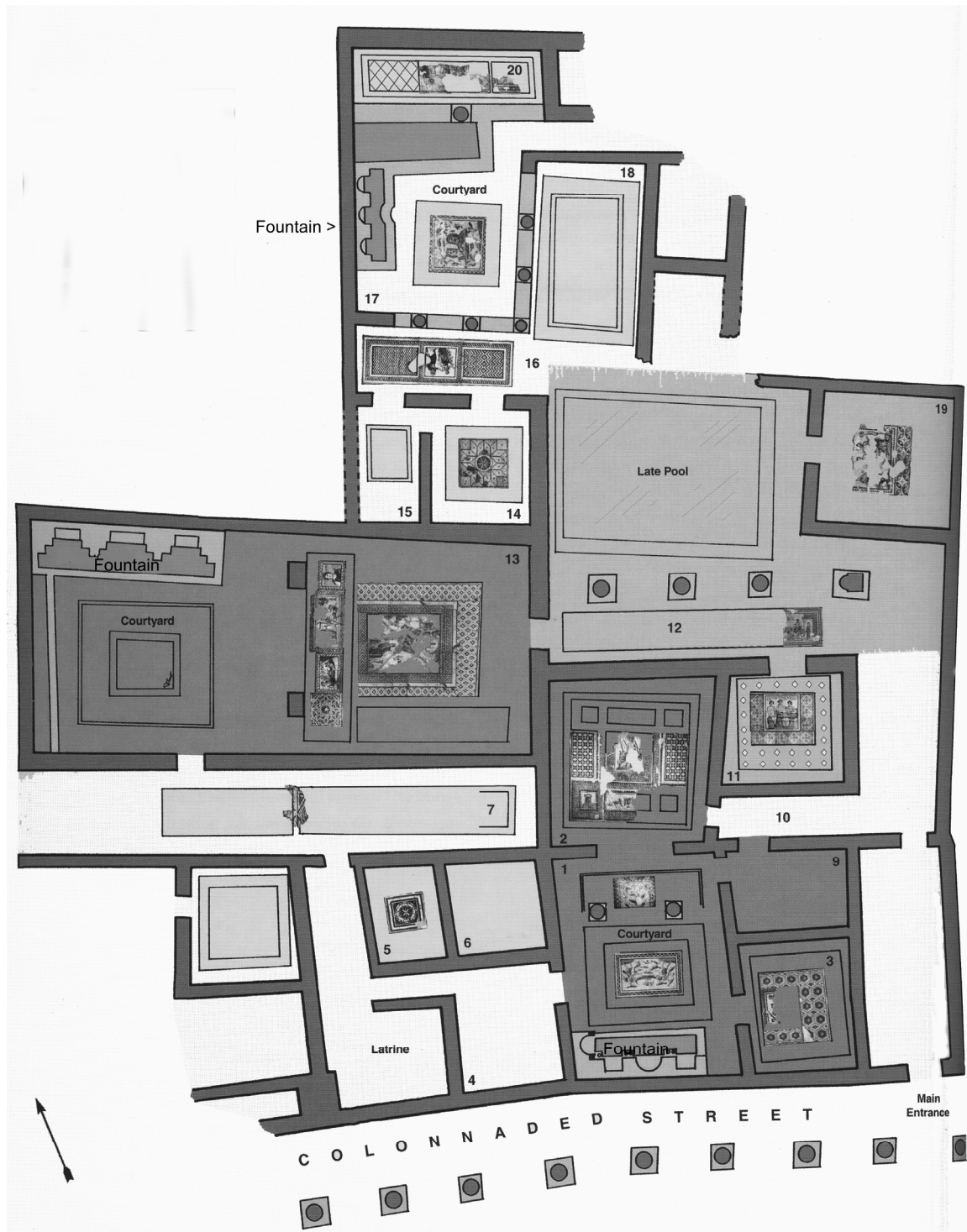


Fig. 9.8: Plan of the House of Menander [#431], Antioch, showing locations of the fountains and latrine [Dobbins 2001, 50].



Fig. 9.9: Fountain in room 1 in the House of Menander [#431], Antioch [Dobbins 2001, fig. 8].

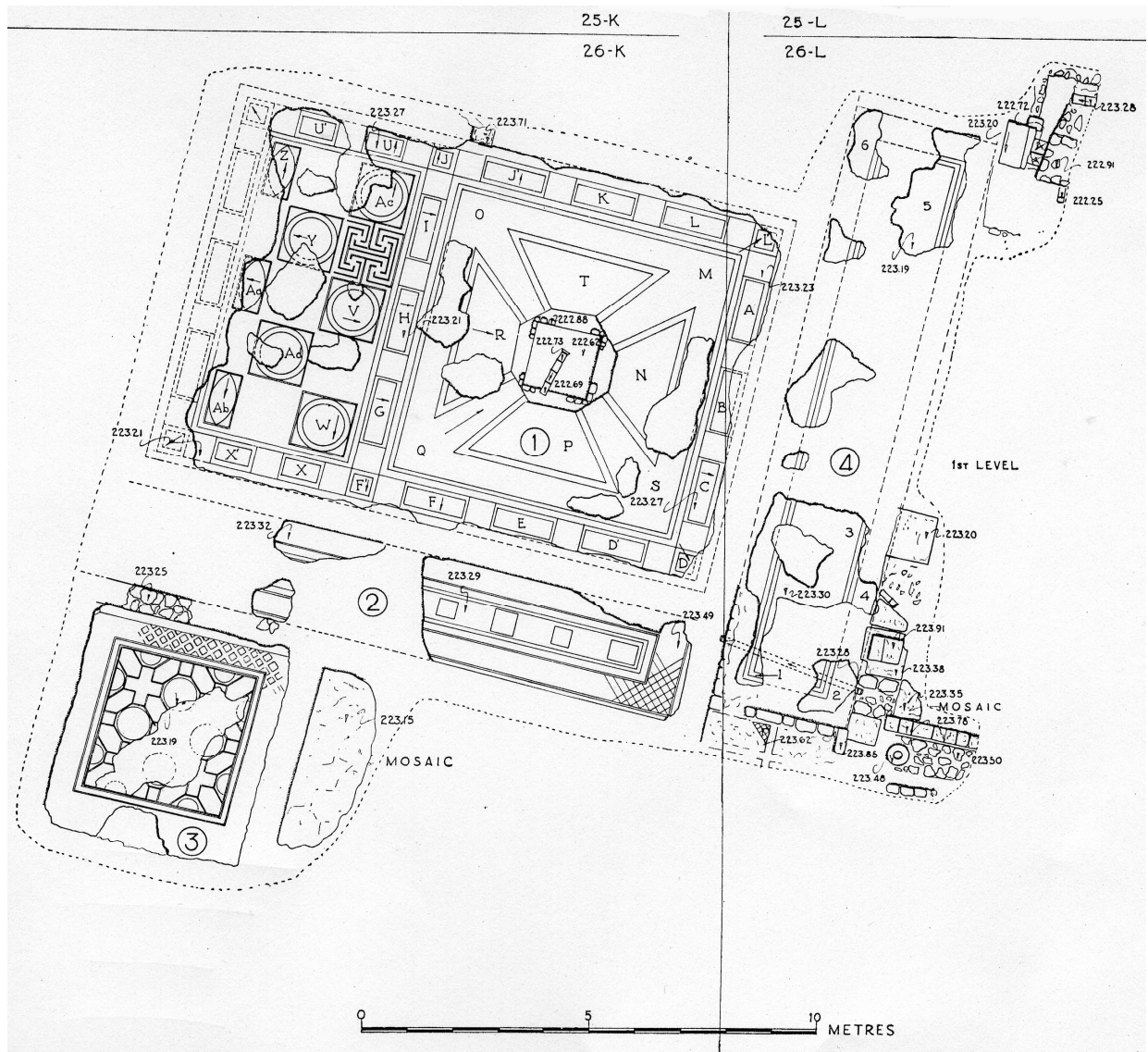


Fig. 9.10: Plan of house #438, Antioch; note pipe feeding octagonal pool in the centre of the courtyard [Levi 1947, fig. 85].

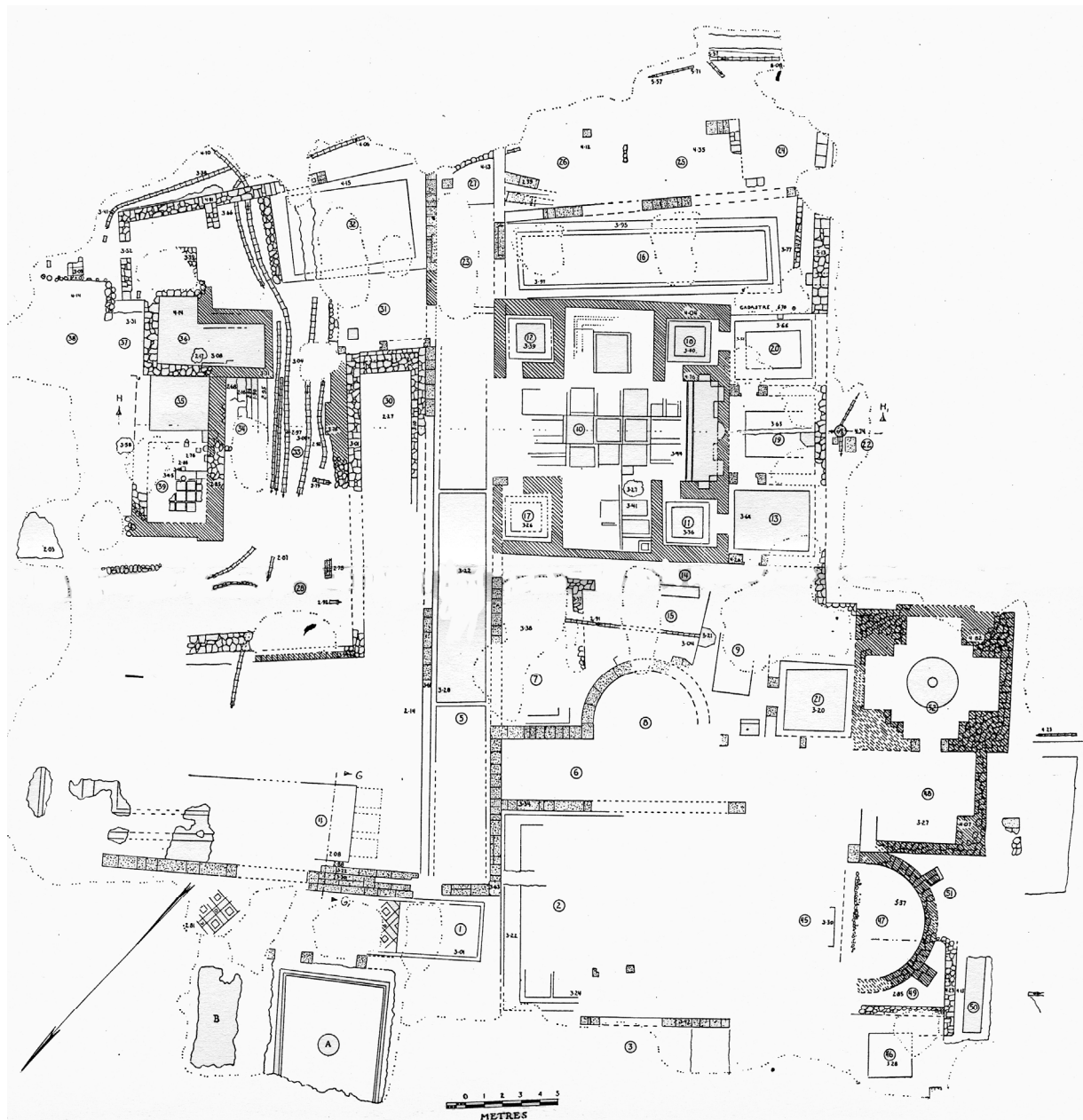


Fig. 9.11: Plan of the Yakto Complex [#440], Antioch; note the multiple pipelines [Levi 1947, fig. 110].



Fig. 9.12: Cistern no.17, Sbeitih/Shivta. A hole, 15 mm large, was found in the arch structure that may have been used for a pulley system over the recessed draw-shaft [Tsuk 2002c, fig. 3].

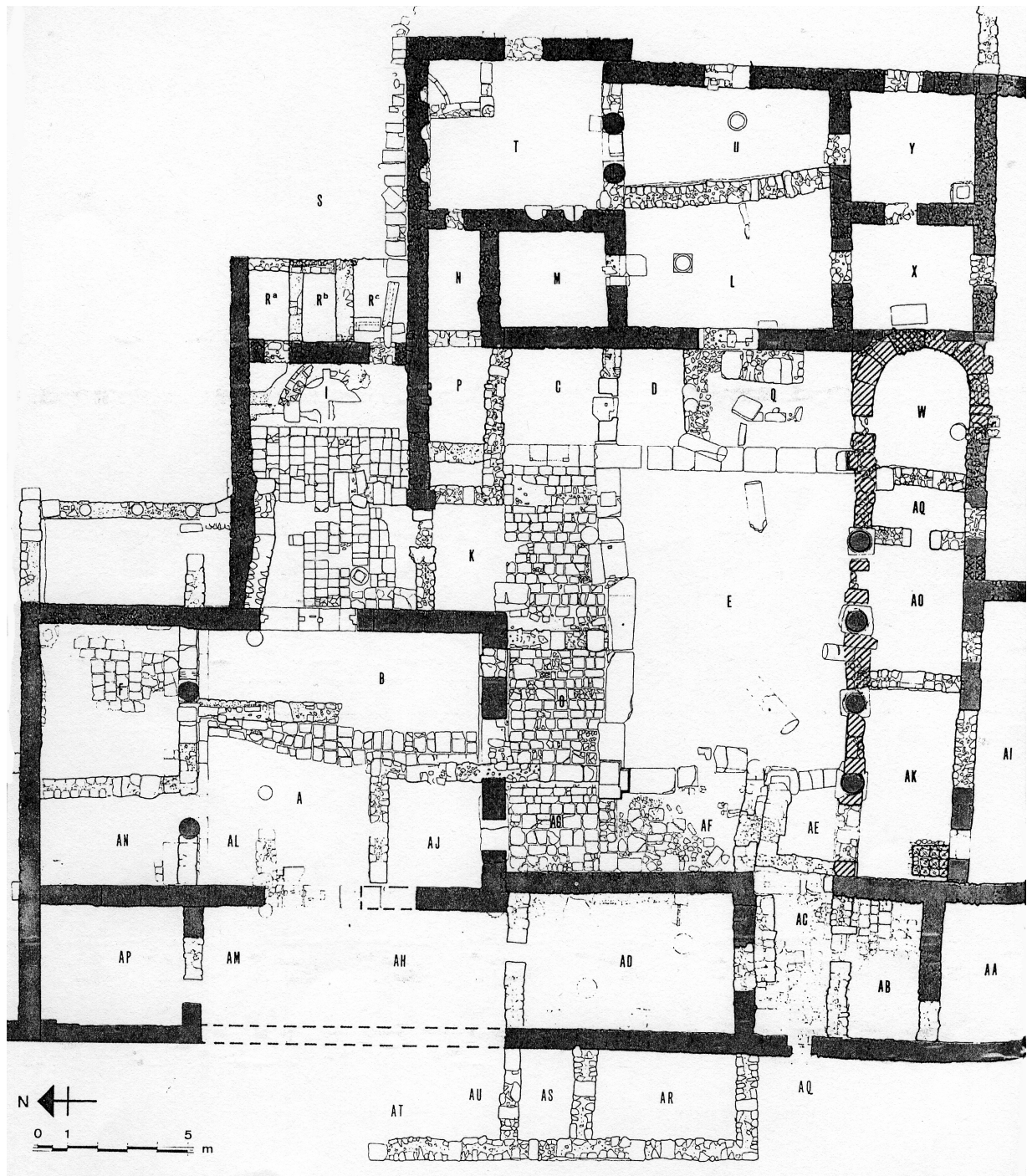


Fig. 9.13: Plan of the House of the Console Capitals [#376], Apamea; reservoirs at 'R' and fountain at 'I' [Balty 1987, fig. 135].



Fig. 9.14: Fountain with reservoir behind in the House of the Console Capitals [#376], Apamea [photo: author].

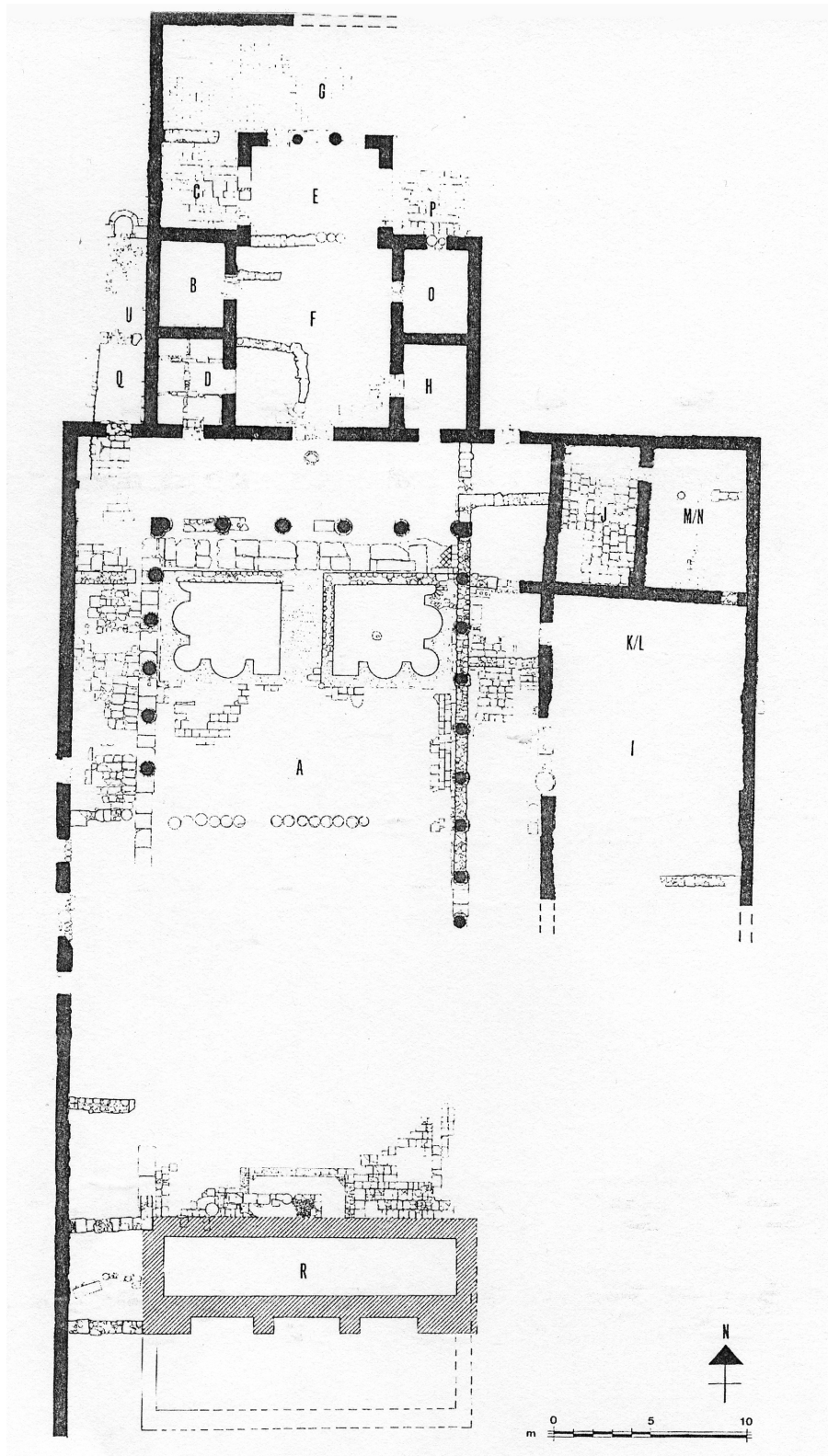


Fig. 9.15: Plan of house #378, Apamea; reservoir at 'R' [Balty 1987, fig. 138].



Fig. 9.16: Late Roman reservoir inserted into peristyle of house #378, Apamea [photo: author].



Fig. 9.17: Stone basin (not *in situ*) in peristyle of house #438, Apamea [photo: author].

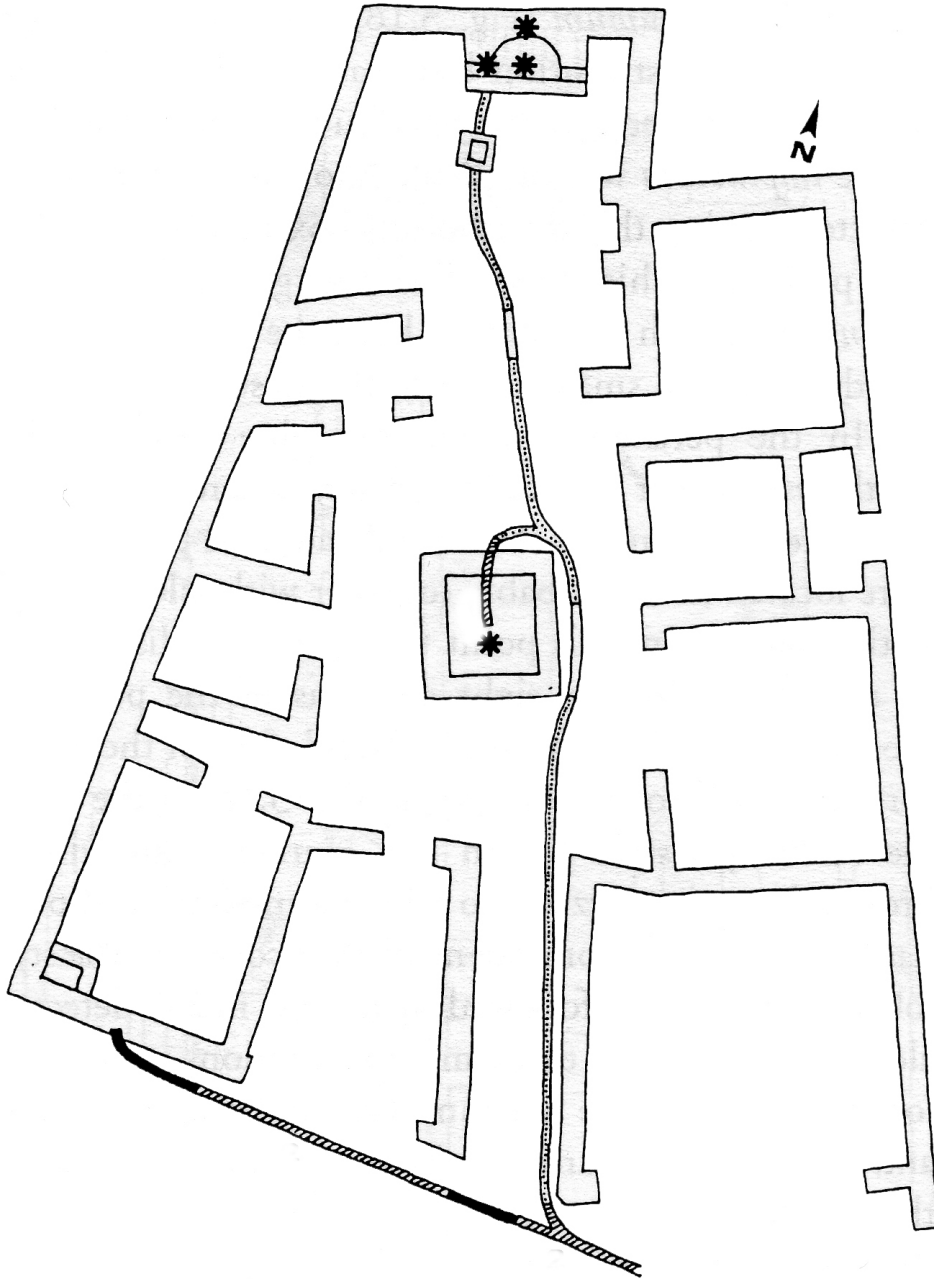


Fig. 9.18: Plan of typical water supply network in a Pompeian house showing lead pipelines (with junction box) feeding fountains spouts (*); Casa dell'Orso, Pompeii [Jansen 2001, fig. 3.13].



Fig. 9.19: Bronze tap found during excavations at Zeugma [photo: author].

PLAN AND SECTION OF ROMAN VILLA

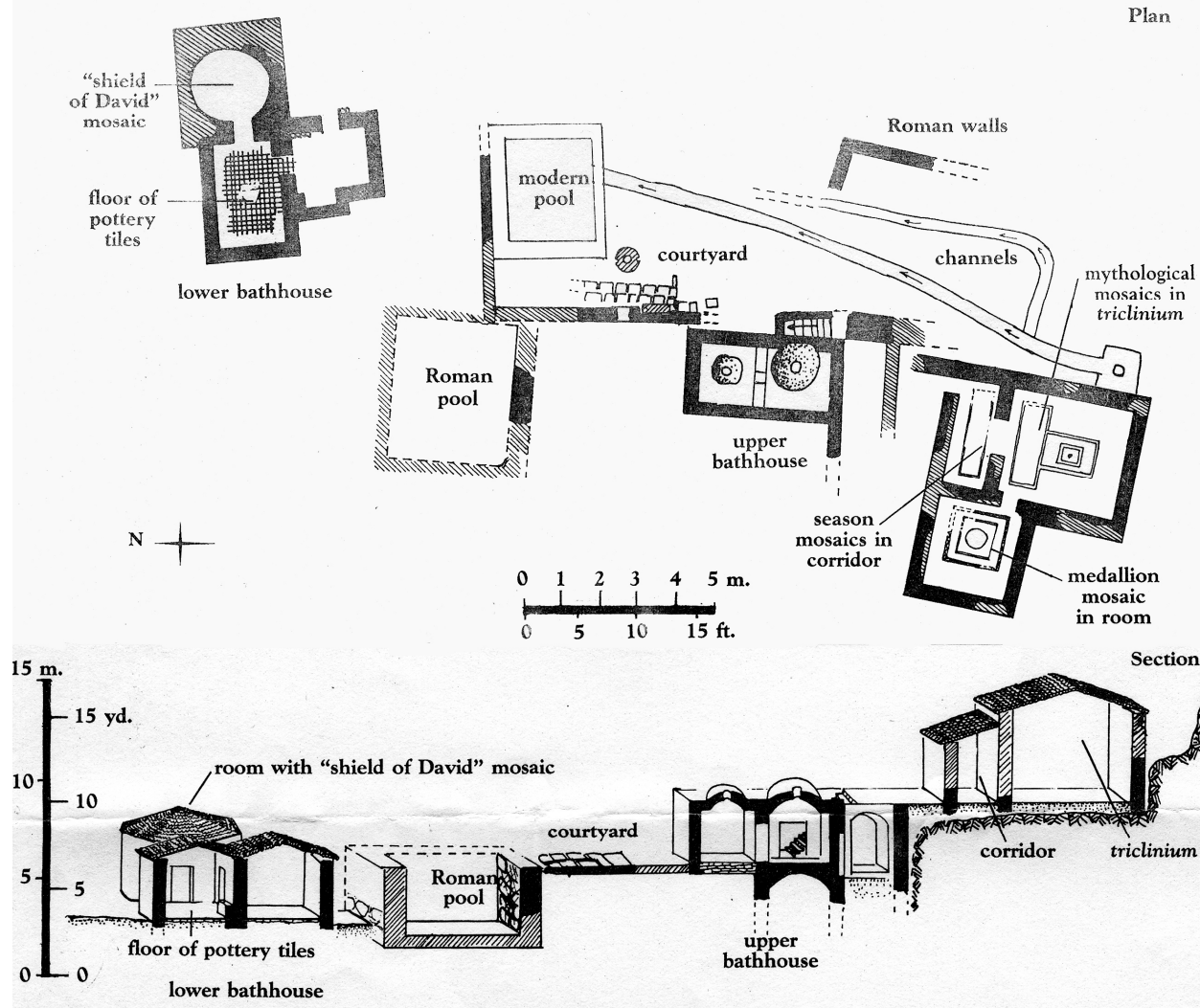


Fig. 9.20: Plan and section of the En Ya'el villa [#371], near Jerusalem [Edelstein 1990].

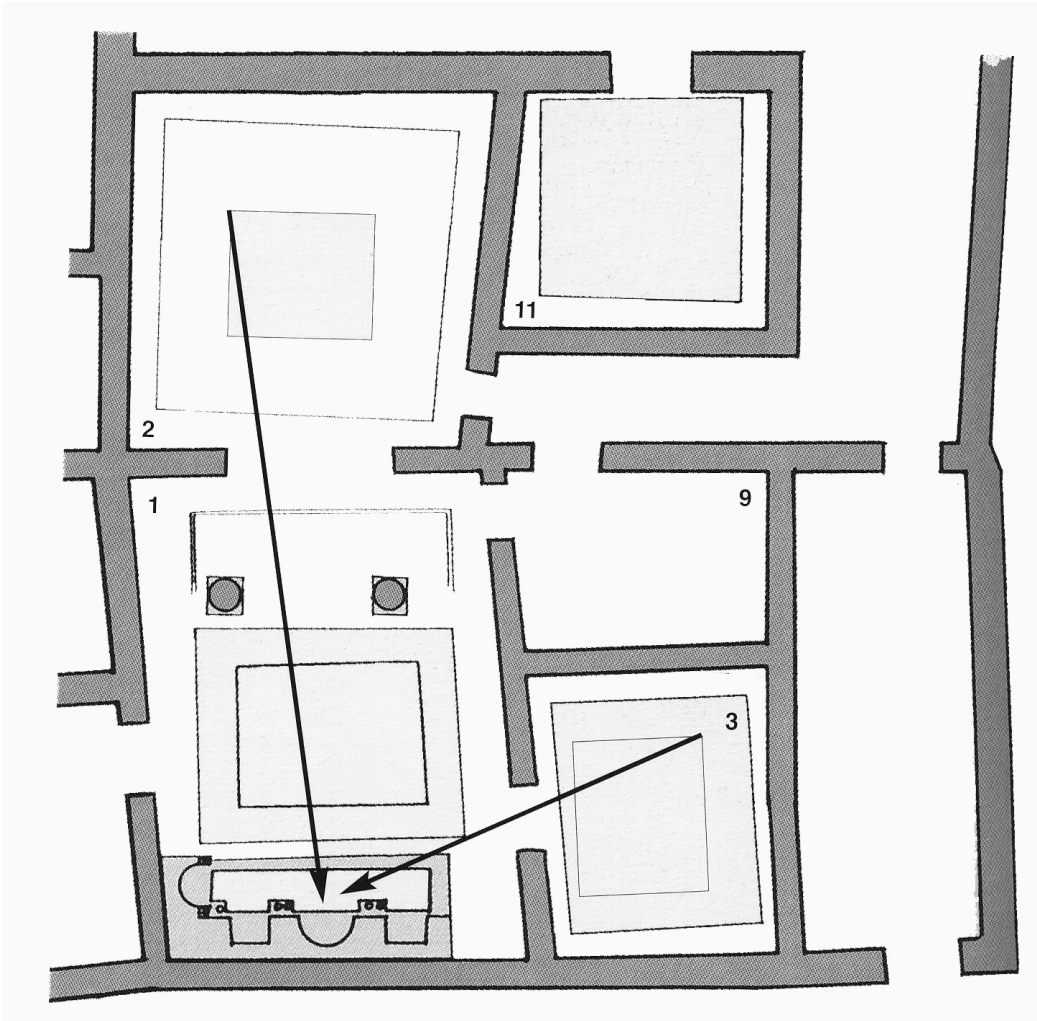


Fig. 9.21: Partial plan of the House of Menander [#431], Antioch, showing sightlines towards fountain in room 1 [Dobbins 2001, fig. 7].