



Plate 21: View of overlooking mezzanine floor from G5 (film 12.27)



Plate 22: General view of G5 (film 12.35)

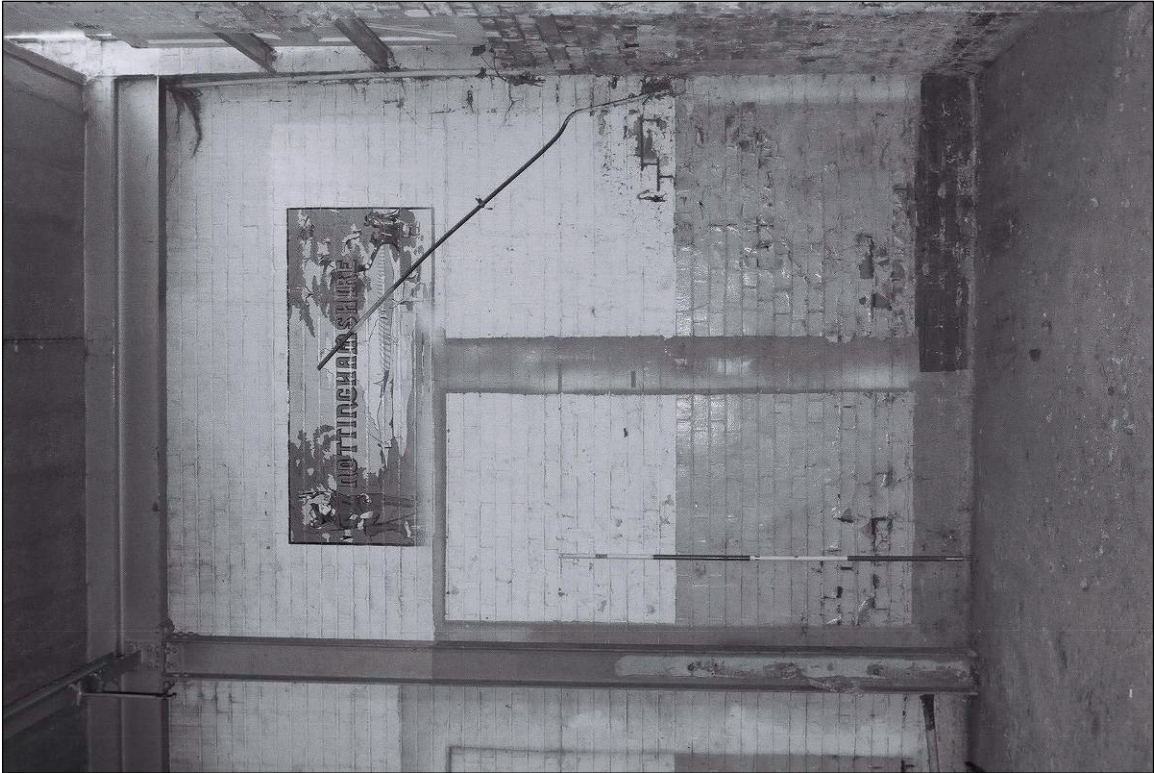


Plate 23: Detail of 'Nottinghamshire' mural on northeast wall of G5 (film 12.32)



Plate 24: Detail of truncated 'T' bars (4 rows) within southeast wall of G5 (film 12.28)

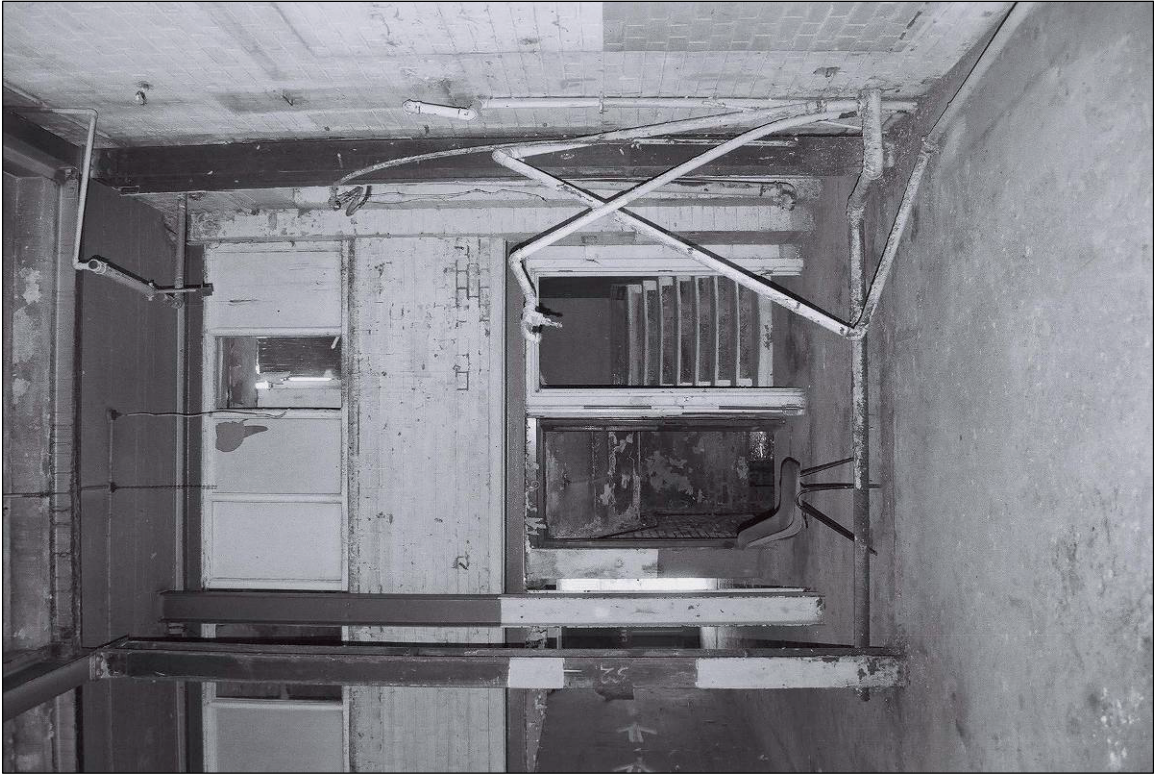


Plate 25: Shot of stairway and mezzanine windows overlooking G5 (film 12.25)



Plate 26: Detail of doorway to cellar and window of stairway. G5/G1 (film 12.23)



Plate 27: Detail of northwest wall of G4 showing blocked openings (film 12.18)



Plate 28: General view of G4 (film 12.21)



Plate 29: General view into room G10 (film 3.3)

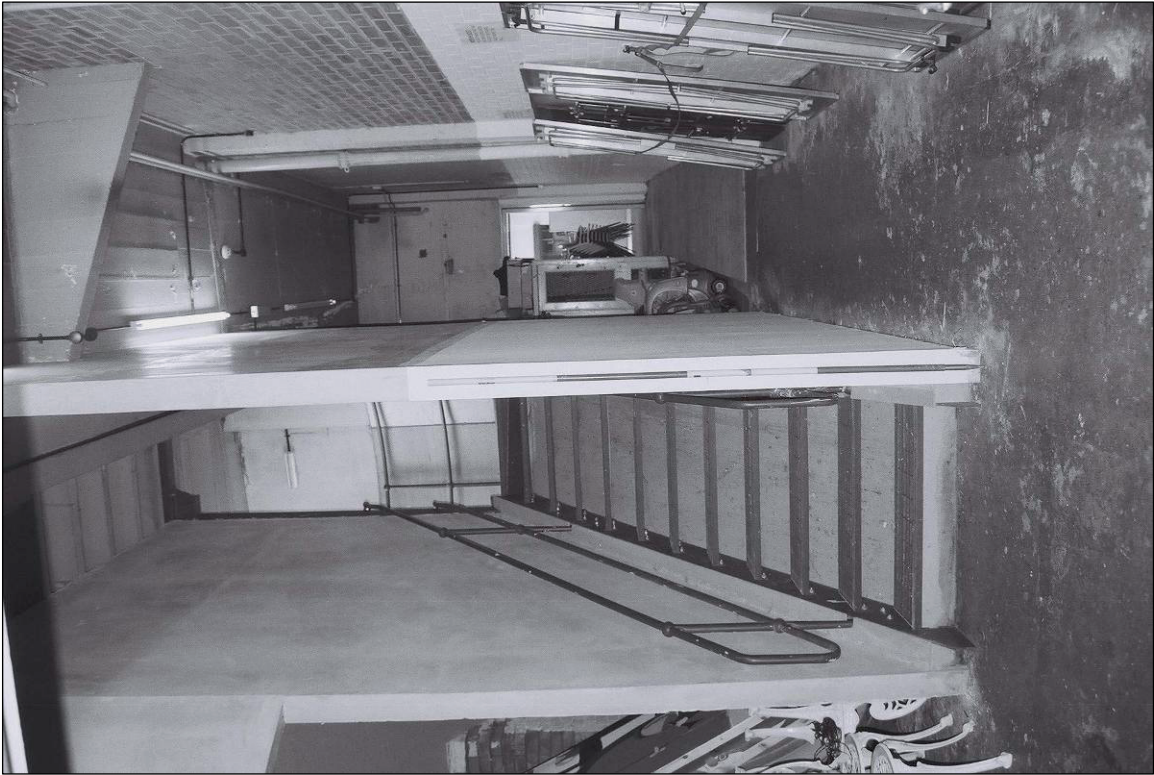


Plate 30: General shot of corridor towards church,
ground floor (film 10.20)

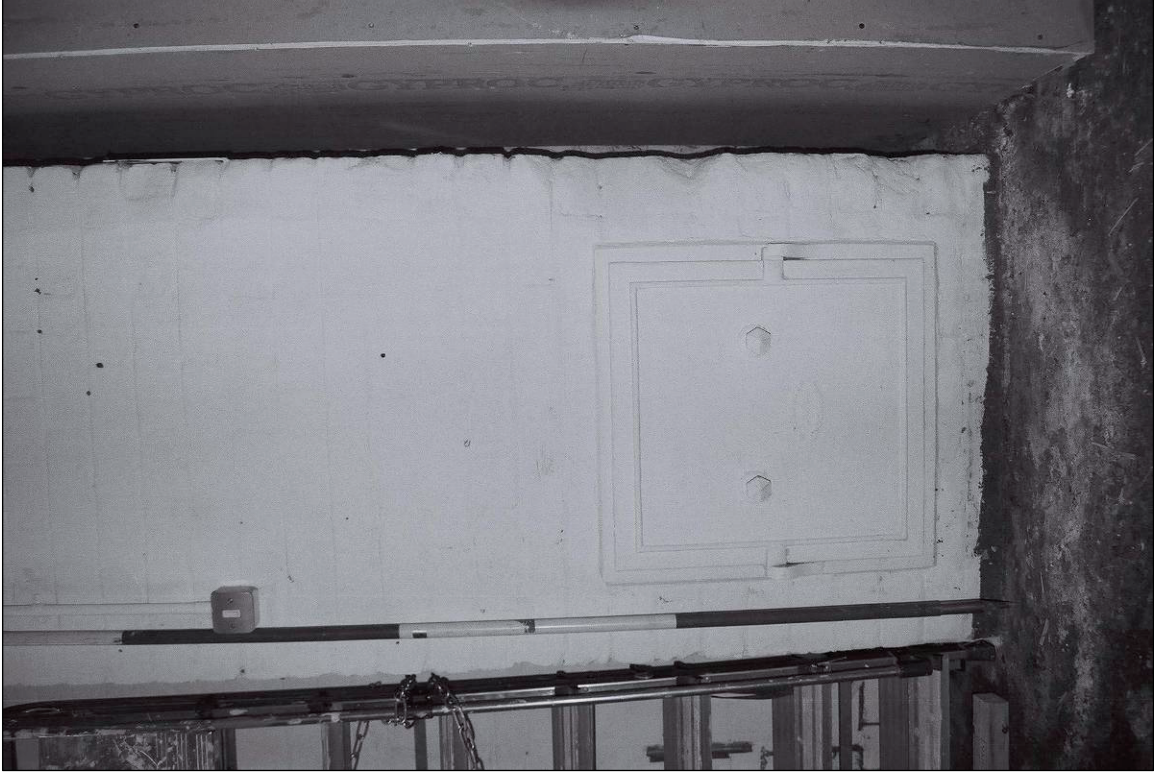


Plate 31: Detail of iron door and possible flue room G11
(film 10.19)