



Plate 1: 79-81 Hollis Croft, taken in 1960 (Picture Sheffield s17430)



Plate 2: 87 Hollis Croft, taken in 1960 (Picture Sheffield s17432)



Plate 3: General view of north elevation of building (film 1.30)



Plate 4: General view of north and west elevations of building, note rendering covering west elevations of front and west ranges (film 1.32)



Plate 5: General view of central yard, note modern brick and concrete floor (film 1.33)



Plate 6: Detail of windows and date stone above cart passage in north elevation (film 1.31)



Plate 7: General view of room G2 looking north west (film 1.6)



Plate 8: General view of room G1 looking south (film 1.7)



Plate 9: General view of room G3 looking north east (film 1.27)



Plate 10: General view of room G7 looking south west (film 1.29)



Plate 11: Room G1, detail of plaster cornice above suspended ceiling (film 1.5)



Plate 12: General view of room F5 looking south (film 1.10)



Plate 13: General view of room F2 looking north west (film 1.15)



Plate 14: General view of room F3 looking north (film 1.16)



Plate 15: General view of room F4, note later staircase (film 1.17)



Plate 16: General view of room S4 looking northeast (film 1.19)



Plate 17: General view of room S3 looking northeast (film 1.20)



Plate 18: General view of room S2 looking northwest (film 1.21)



Plate 19: General view of room S1 looking north (film 1.22)



Plate 20: General view of room S5, note crane for taking in door and king post truss with later timber brackets (film 1.23)

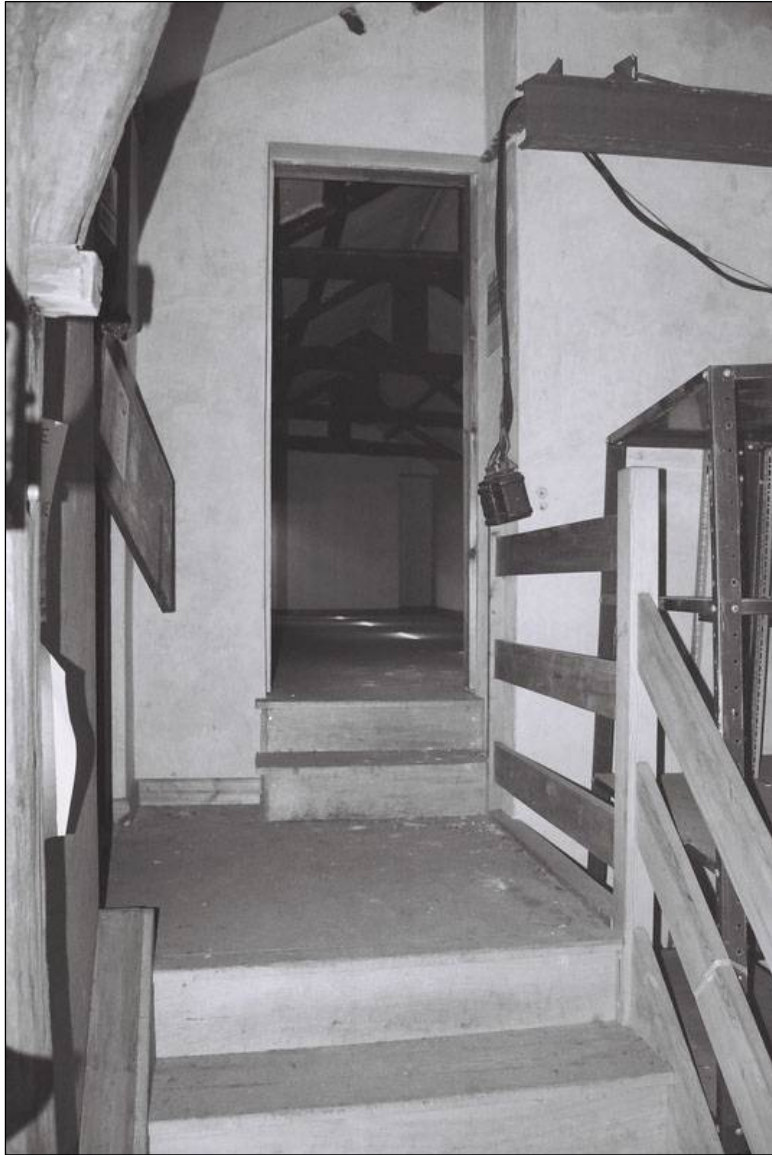


Plate 21: Room S5, detail of doorway to room S4 and change in floor level (film 1.24)



Plate 22: General view of east elevation of building, note rendering and converted doorway situated on ground floor (film 1.34)



Plate 23: General view of room G9, note suspended ceiling and plaster boarding obscuring original features (film 1.3)



Plate 24: General view of room F9 looking south, note blocked fireplace (film 1.13)



Plate 25: Room F9, detail of staircase scar on wall (film 1.11)



Plate 26: General view of room S6 looking south, note king post trusses (film 1.26)



Plate 27: Room S6, detail of roof truss, note in filled slots suggesting a removed partition situated below (film 1.25)



Plate 28: General view of central yard area and east elevation of building, note later single storey extension (film 1.35)



Plate 29: General view of room G10 looking north west, note timber trusses (film 1.2)