



Plate 1: Tin Glazed Earthen sherd with hand painted decoration.



Plate 2: Transfer printed Pearlware sherd.



Plate 3: Transfer printed Pearlware sherd.



Plate 4: Transfer printed Whiteware sherd, with mark identifying the origin of the vessel as Staffordshire.



Plate 5: Bone china sherd with lustre decoration.



Plate 6: White, glazed tear-drop or pear-shaped bone china object with one side ground flat after firing.

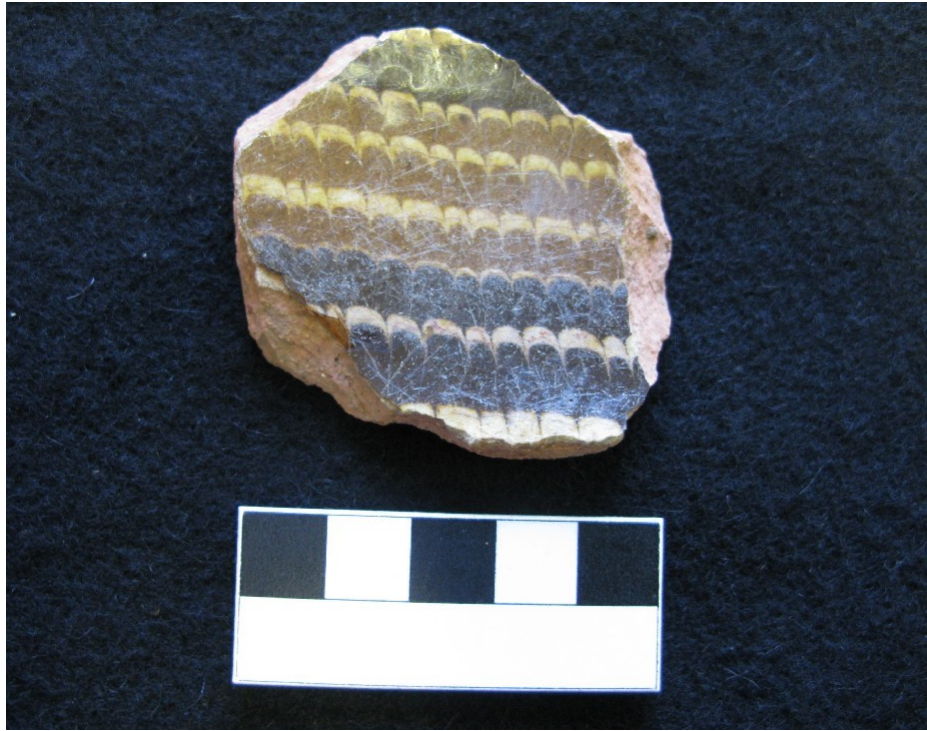


Plate 7: Pot disc made from an 18th-century press-moulded dish with feathered decoration.