



Plate 1: General view of Mytholm Works, looking northeast
(© David Brown 1989)



Plate 2: General view of Mytholm Works, looking north (© David Brown1989)

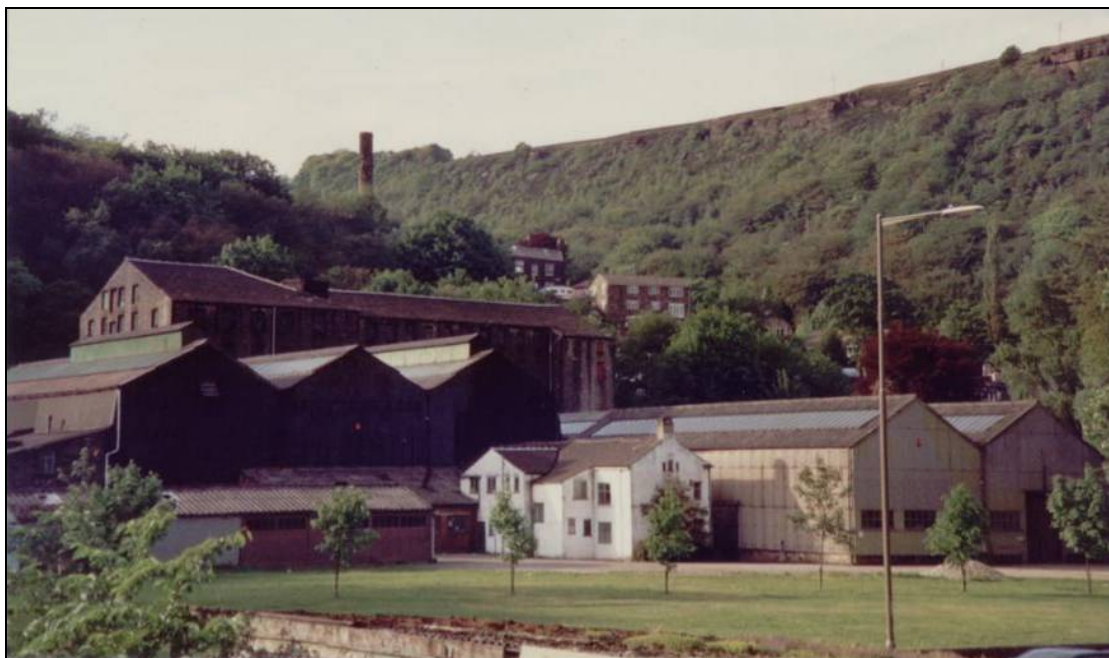


Plate 3: General view of Mytholm Works, looking northeast (© David Brown1989)



Plate 4: General view of Mytholm Works, looking northeast (© David Brown1989)



Plate 5: General View of Mytholm Mill buildings 5, 6, & 9 during demolition
(© David Brown1989)



Plate 6: General view of building 9, 10, & 11 looking northwest (2005)



Plates 7: General shot looking north towards remnants of building 1 and dam wall (film 2:5)



Plate 8: General shot looking northwest towards remnants of building 1 (film 2:1)



Plate 9: General shot looking northeast towards remnants of building 9 (film 2:3)



Plate 10: Main gate into Mytholm works, looking out of the factory towards the south (2005)



Plate 11: Transition in coping of eastern boundary wall beside main driveway (2005)



Plate 12: Lower reservoir, looking west – IF 4 (film 5:5)



Plate 13: Lower reservoir, looking N – IF 4 (film 4:3)



Plate 14: Lower reservoir, looking NE – IF 4. Note overflow in foreground (film 4:5)



Plate 15: Stone built structure on northern bank of lower reservoir – IF 5 (film 4:9)

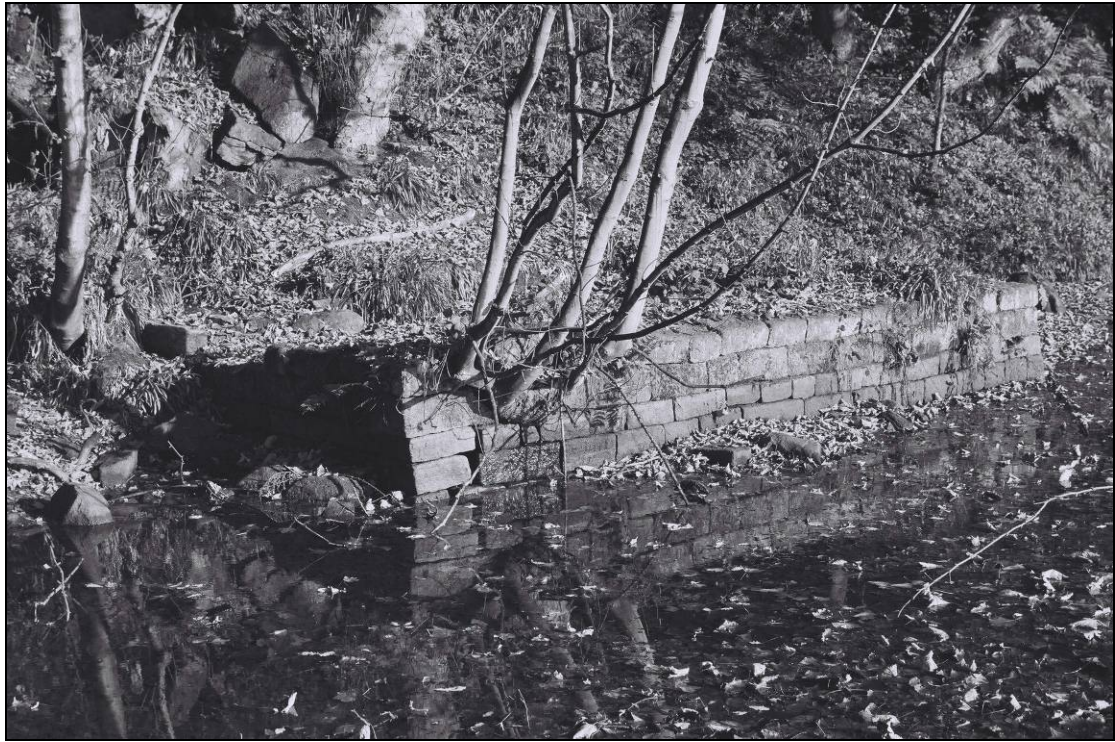


Plate 16: Stone built structure on northern bank of lower reservoir – IF 5 (film 15:10)



Plate 17: Upper reservoir, looking west – IF 16 (film 7:5)



Plate 18: Upper reservoir, looking east – IF 16 (film 7:3)



Plate 19: Outlet of head goit from Colden Water into upper reservoir, note flue for chimney passes over top (film 16:15)



Plate 20: Overflow out of upper reservoir looking east – IF
10 (film 6:7)

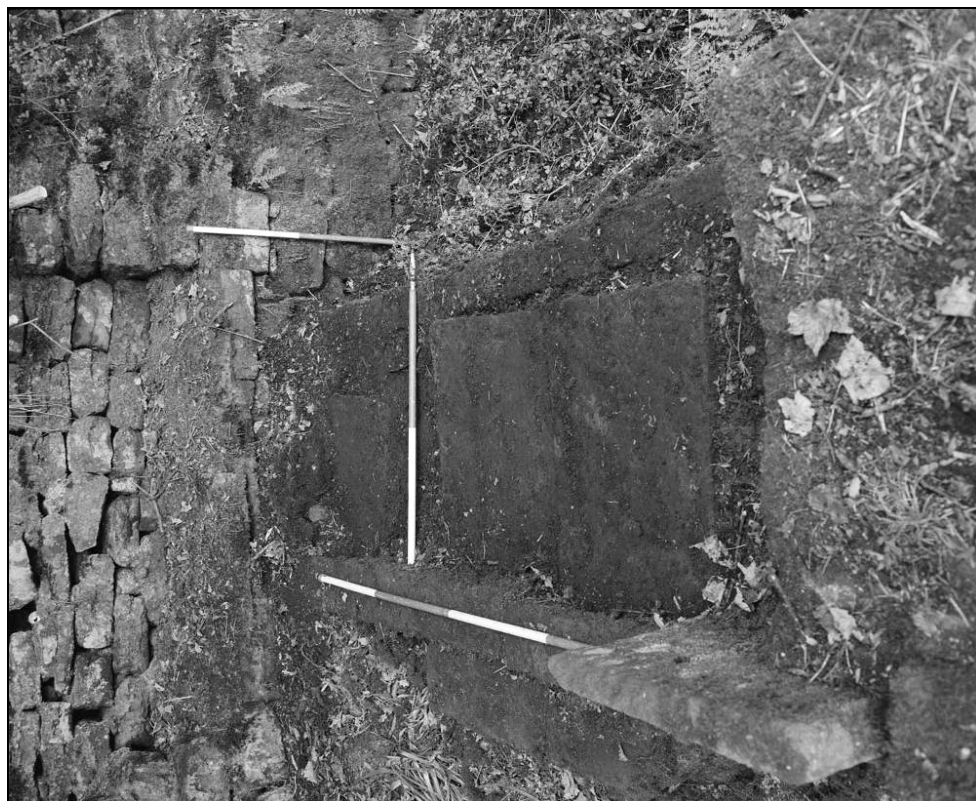


Plate 21: Overflow from upper reservoir looking north –
IF 10 (film 6:5)



Plate 22: Channel running between upper and lower reservoirs , looking northeast (film 5:7)



Plate 23: Weir in channel between upper and lower reservoir – IF 9. Note metal gate in situ (Film 6:1)



Plate24: Upper reservoir, looking south – IF 16. Note sluices to economiser house (left) and pentrough (right) (film 6:9)



Plate 25: Original course of truncated cast iron pipe running from lower reservoir to building 8 looking northwest. Note stone piers – IF 13 (film 15:1)



Plate 26: Inlet into pen trough looking southwest, note stone slab footbridge and metal trash grill – IF 15 (2005)



Plate 27: Truncated cast Iron pipe looking north – IF 13 (film 15:3)



Plate 28: Possibly silted up sluice to east of lower reservoir, looking east (film 15:5)



Plate 29: Detail of iron cogged gear relating to silted up sluice, east of lower reservoir (film 15:8)



Plate 30: Inserted sluice leading to economiser house, looking east – IF 17 (film 16:10)



Plate 31: Inserted sluice leading to economiser house, looking southwest – IF 17 (film 16:13)



Plate 32: Change in fabric of lower reservoir dam (IF 3) behind building 1, looking north (film 15:19)



Plate 33: Modification of south-eastern corner of lower reservoir dam, looking north – IF 3 (film 15:9)



Plate 34: Stone steps up embankment to upper reservoir behind building 6, looking east (film 6:3)



Plate 35: Stone steps between lower and upper gardens, looking northeast – IF18 & 19 respectively (film 7:9)



Plate 36:
Terraced gardens,
looking north over
upper reservoir –
IF 18 & 19 (film 7:2)



Plate 37: 75 ft chimney stack, looking northwest – IF 22
(film 8:5)



Plate 38: Detail of base of chimney stack looking north,
note decorative torus moulding – Structure 22 (film 8:3)



Plate 39: Stone staircase above flue leading to chimney, looking north – Structure 21 (film 8:7)



Plate 40: Stone staircase above flue leading to chimney, looking north – Structure 21 (film 7:7)



Plate 41: Detail of disused entrance of service duct to flue looking north (film 8:1)



Plate 42: Blocked doorway in site boundary predating insertion of IF 21, looking east (film 8:9)



Plate 43: General view looking east of extant remains of building 1 with remnants of pen trough and wheel pit in background (film 3:7)



Plate 44: Front elevation of building 1, looking north (2005)



Plates 45: View between building 1 & 5, noting first floor walkway across rear wall
(© David Brown1989)



Plate 46: South and east facing elevations of building 1, looking northwest (2005)



Plate 47: Detail of metal fire door and wall box in east facing elevation of building 1, noting site of former stone walkway (2005)



Plate 48: West facing elevation of building 1 looking southeast (2005)



Plate 49: Detail of inserted window in building 1, looking east (2005)

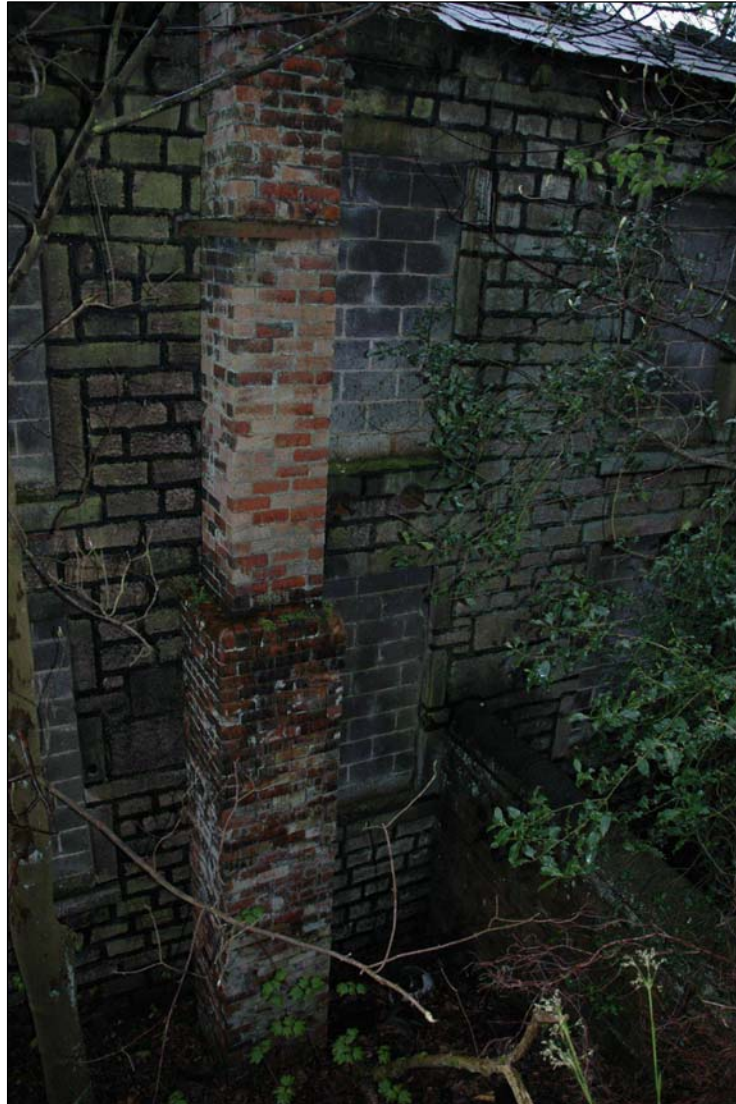


Plate 50: North facing elevation of building 1 looking south, note blocked windows and secondary added chimney stack (2005)



Plate 51: Remnants of northern wall of building 1 with lower reservoir dam wall visible behind, looking north (film 2.07)



Plate 52: Remnants of building 1 from the east (film 3:5)



Plate 53: Photo looking west into walled space between building 1 and lower reservoir's dam wall (film 5:3)



Plate 54: Blocked arched doorway within rear wall of building 1 (film 2:9)



Plate 55: Detail of secondary inserted socket for removed RSJ, building 1 (film 15.24)



Plate 56: Remnants of jack arches on ground floor of building 1, note angled bricks and truncated tie rod (film 15:20)



Plate 57: Remnant of red brick column base within floor of building 1 (film 15.22)



Plate 58: Brick partitions in ground floor of building 1, looking north (2005)



Plate 59: Internal elevation of western wall on ground floor of building 1, showing blocking and start of jack arch (2005)

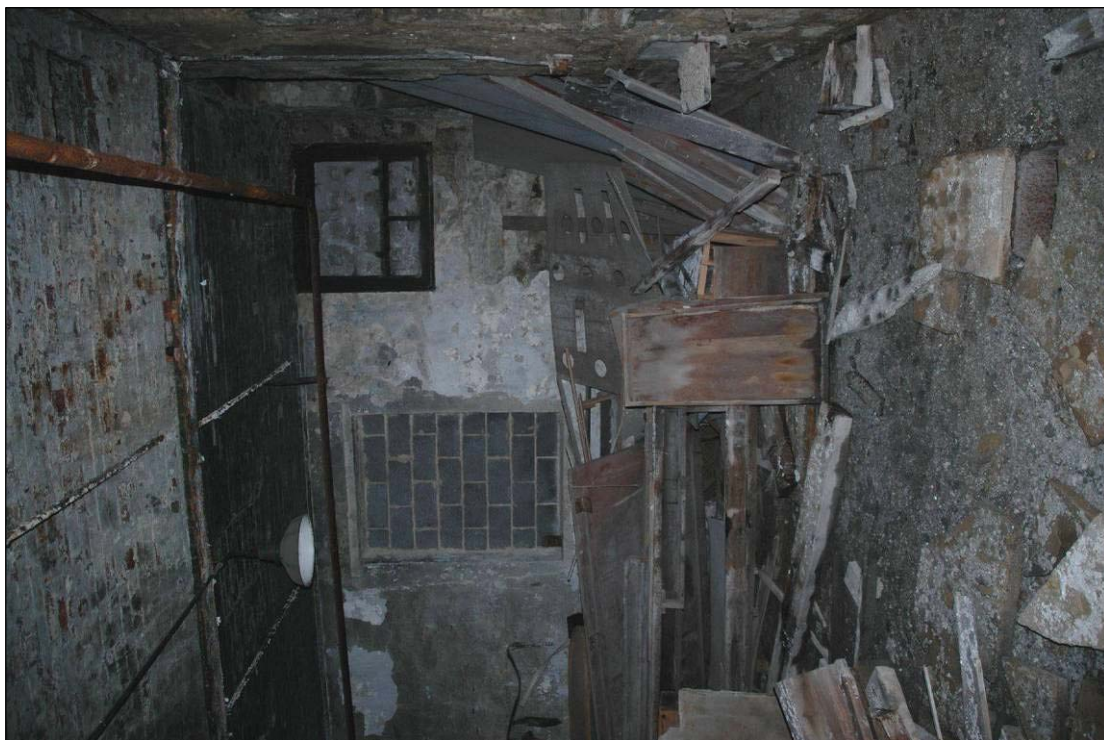


Plate 60: First floor of building 1, looking west, showing wall box and blocked window (2005)



Plate 61: First floor of building 1 looking SW showing cast iron columns and difference in windows between southern and western elevations (2005)

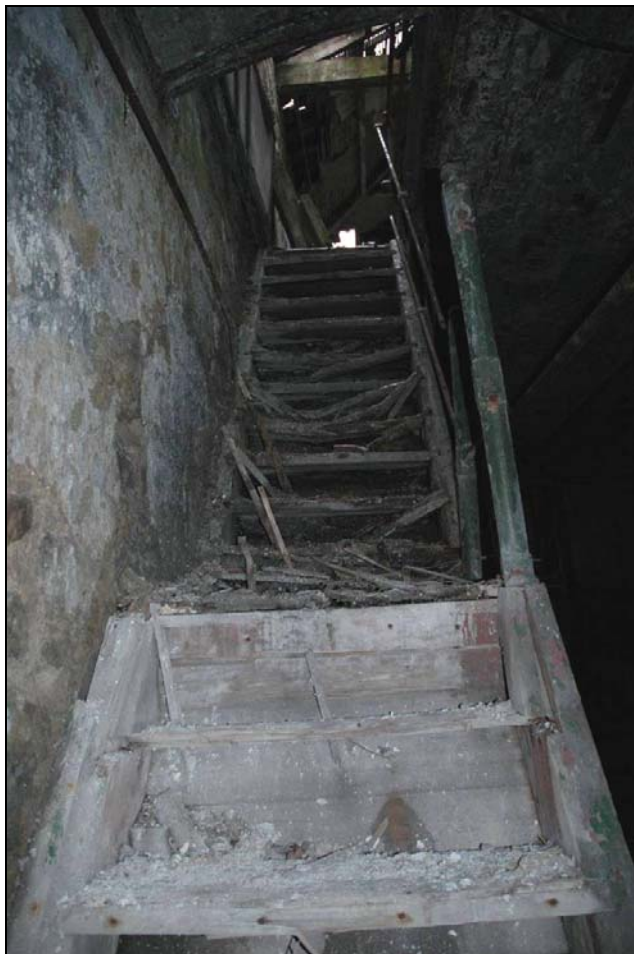


Plate 62: Internal staircase between ground and first floors in building 1, looking south (2005)



Plate 63: Detail of capital on cast iron column supporting brick jack arches on first floor of building 1 (2005)



Plate 64: General view of building 4, looking northeast (film 17:3)



Plate 65: General view of building 4 looking east, noting single pitch extension and later corrugated sheet clad northern wall (film 18:4)



Plate 66: General view of southern elevation of building 4
(film 17:1)

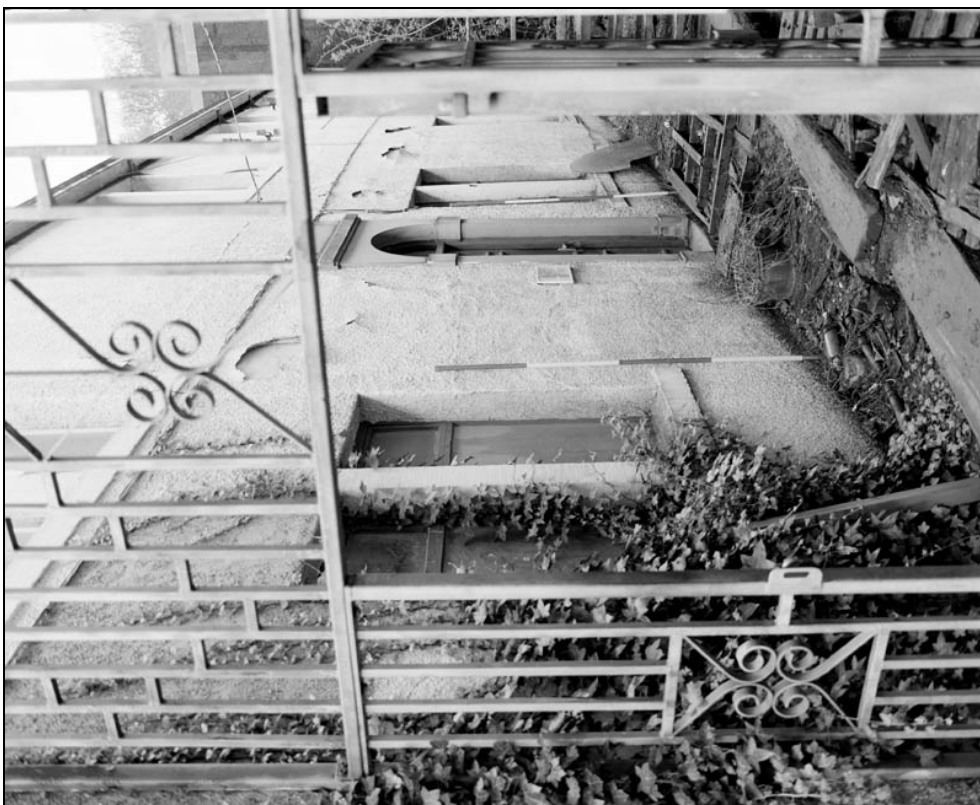


Plate 67: General view of eastern elevation of building 4
(film 18:8)



Plate 68: General view of eastern elevation of building 4,
looking southwest (film 18:6)



Plate 69: Detail of paneled door with arched fanlight in
eastern elevation of building 4 (film 18:10)



Plate 70: General view of western elevation of building 4,
southern end (film 17:5)



Plate 71: General view of western elevation of building 4
(film 17:7)



Plate 72: General view of modern western extension to building 4, looking northeast (film 17:9)



Plate 73: General view of south elevation of building 4 extension (film 18:2)



Plate 74: General view of lobby room G1, building 4:
noting panelled dado (film 21:1)



Plate 75: General view of room G10, looking west into G11
(film 22:6)



Plate 76: General view of G2, noting inserted partition (film 20:9)



Plate 77: General view of G2 looking southwest (film 20:5)



Plate 78: General view of G3, looking southwest (film 19:7)



Plate 79: General view of G3, looking northwest (film 19:9)



Plate 80: Detail of stone fireplace in room G3 (film 20:3)



Plate 81: General view of G4, noting glazed partitioning (film 19:4)



Plate 82: General view of G3, looking northeast, noting exposed boarding (film 19:2)



Plate 83: Detail of panelling within northern wall of G4 (film 22:2)



Plate 84: General view of G5 looking north (film 19:6)



Plate 85: General view of G5 after exposure of blocked window and door and window in panelling in northern wall (film 22:4)



Plate 86: General view looking south along corridor G6 (film 21:3)

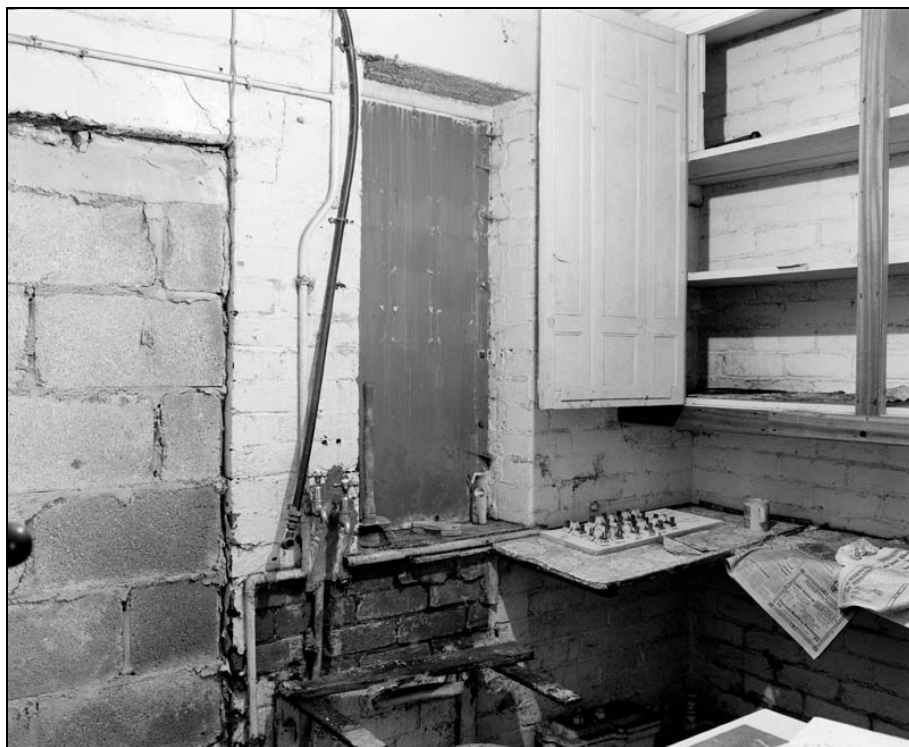


Plate 87: General view of kitchen room G7, looking northwest. Note blocked openings into western extension to building 4 (film 21:5)



Plate 89: General view of G9 in building 4, note glazed bricks (film 21:9)

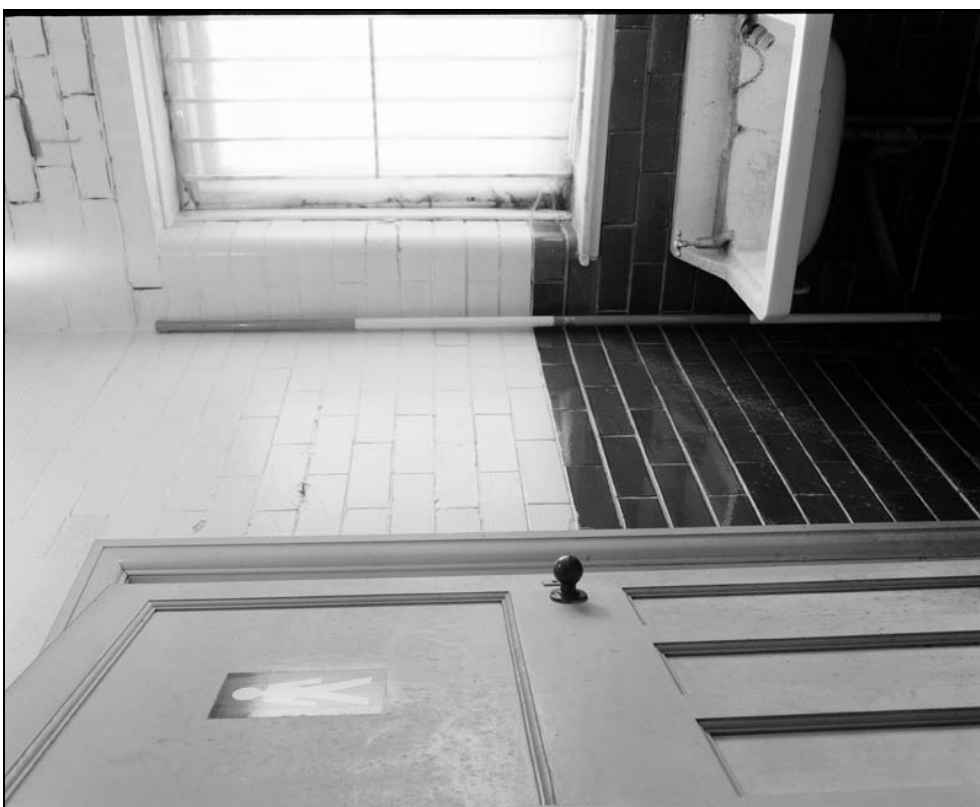


Plate 88: General view of G8 in building 4, note c1930s paneled door (film 21:7)



Plate 90: General view of toilet cubicle beneath staircase in G11, note painted glazed bricks (film 22:8)



Plate 91: General view of F5 in building 4, note modern timber banister (film 22:9)



Plate 92: General view of F5 in building 4, looking south
(film 23:7)



Plate 93: General view of F7 in building 4 looking southwest
(film 23:9)



Plate 94: General view of F8 in building 4 (film 24:1)



Plate 95: General view of F1 in building 4 looking southeast (film 23:1)



Plate 96: General view of F2 in building 4, looking southwest. Note low opening into F1 (film 23:3)



Plate 97: General view of F2 in building 4 looking northwest, noting original door and blocked fireplace to right (film 23:5)



Plate 98: General view of G3 looking southeast, note blocked doorway to F2 (film 24:5)



Plate 99: General view of F3 looking northeast, noting inserted partition (film 24:4)



Plate 100: General view of F4 looking northeast, note blocked openings in north wall (film 24:7)



Plate 101: General view of windows in eastern wall of F4 (film 24:10)