



Plate 102: South facing elevation of building 5 looking northeast from within later JB Engineering sheds (© David Brown1989)



Plate 103: South facing elevation of building 5 with building 1 visible to left, note inserted double door (© David Brown1989)



Plate 104: South facing elevation of building 1, looking north (© David Brown1989)

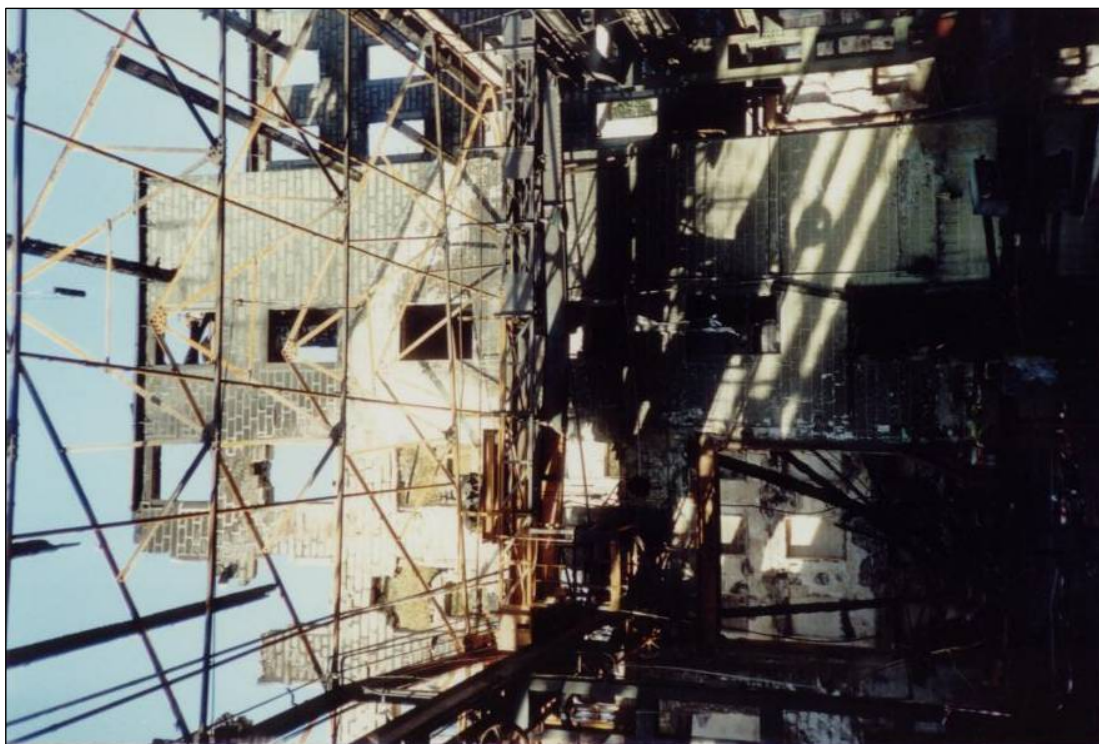


Plate 105: South facing elevation of building 1 (© David Brown1989)



Plate 106: General shot of interior and exterior of building 1 during demolition
(© David Brown1989)

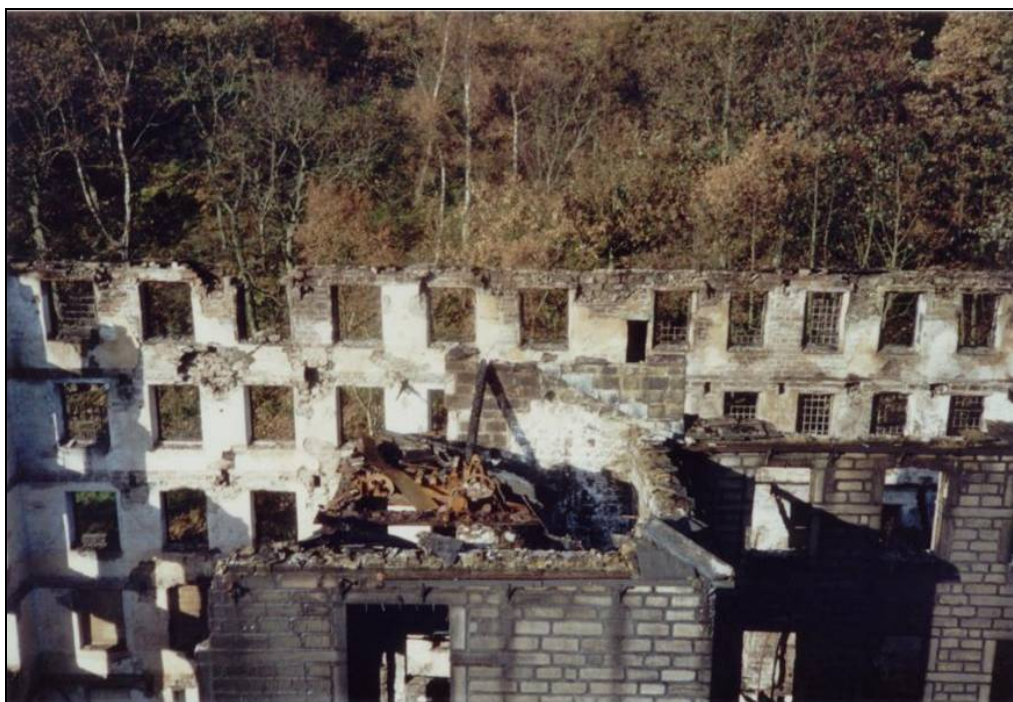


Plate 107: Interior south facing elevations of building 5 & 6, showing difference in size of windows (© David Brown1989)

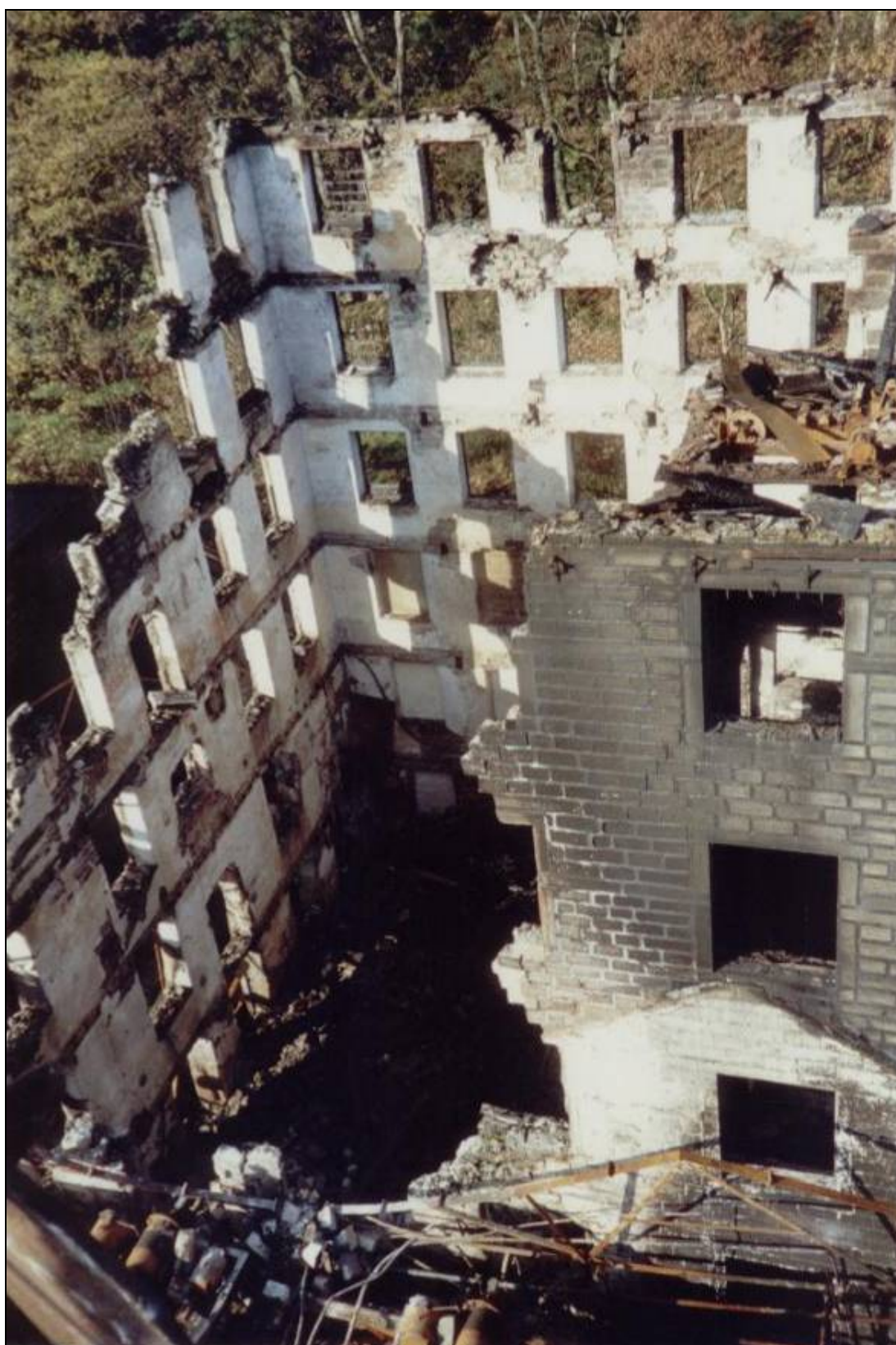


Plate 108: Interior faces of northern and western walls of building 1, showing position of windows and floor scars (© David Brown1989)



Plate 109: Remnants of north facing elevation of building 5 (2005)

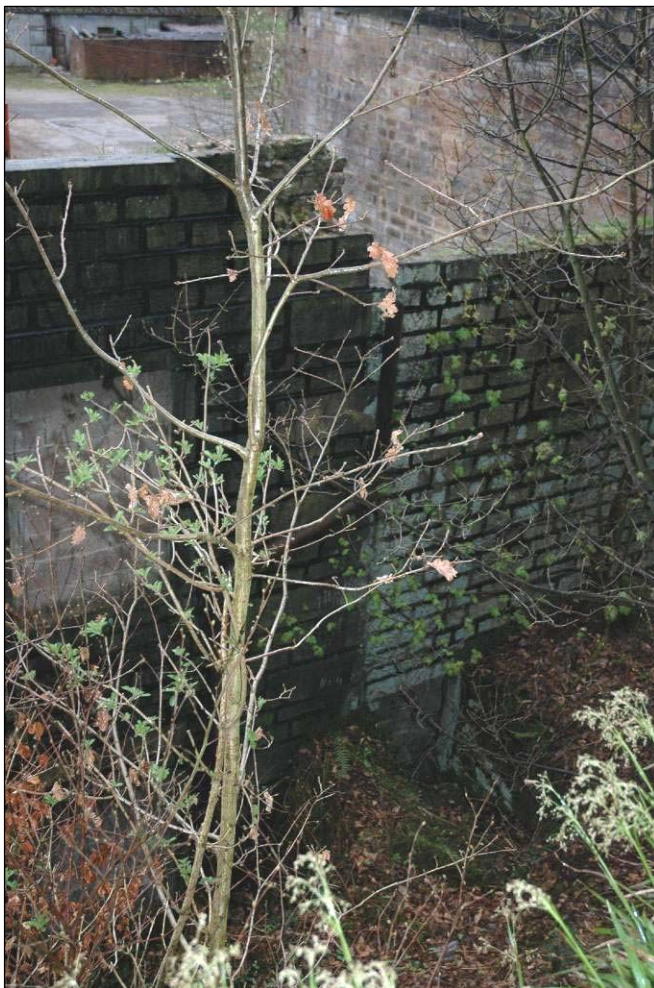


Plate 110: North facing elevation of building 5 and retaining wall to west (2005)



Plate 111: Remnants of passage leading behind building 5 from doorway between buildings 1 & 5, looking west (film 3:3)



Plate 112: Blocked doorway in wall between buildings 1 & 5, with truncated western wall of building 5 to left, looking north (film 3:1)



Plate 113: Internal elevation of northern and western walls of building 5, looking northwest
(© David Brown1989)



Plate 114: Interior east facing elevation of building 5 with building 1 visible behind, looking northwest (© David Brown1989)



Plate 115: Star tower in south-eastern corner of building 1, looking southeast (© David Brown1989)



Plate 116: Star tower in south-eastern corner of building 1, partially demolished showing scar of spiral staircase (© David Brown1989)



Plate 117: Remnants of internal south facing elevation of building 5, with floor joist sockets visible in stonework (2005)

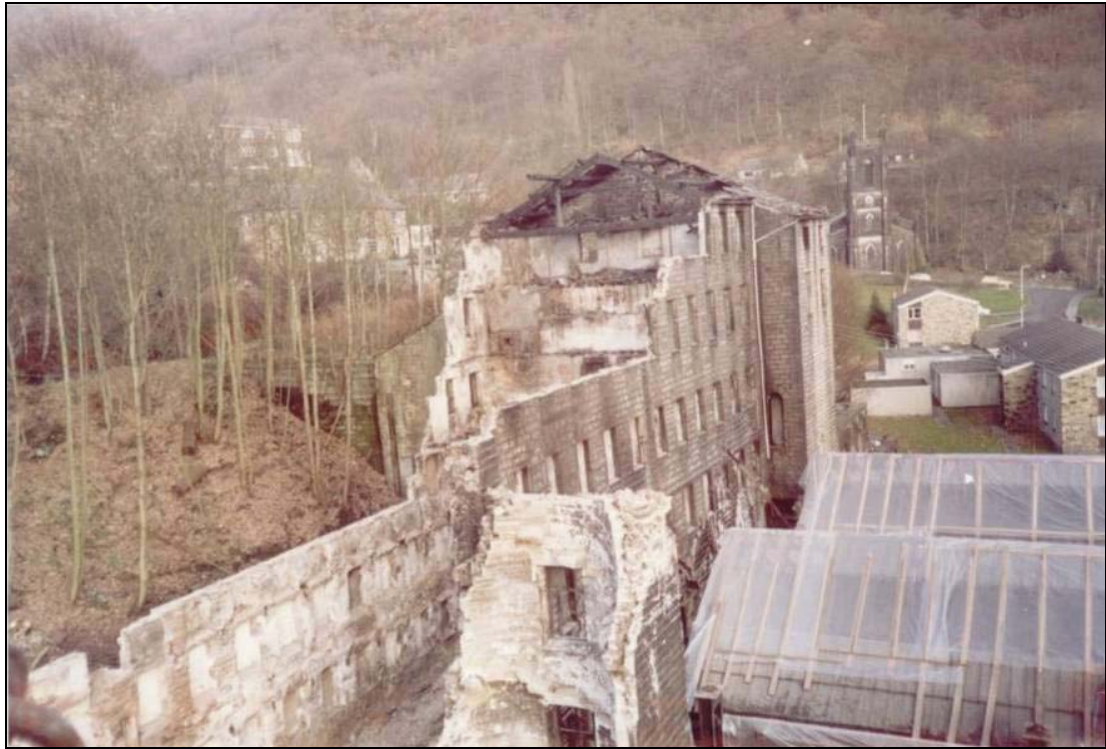


Plate 118: General view into building 6 looking east (© David Brown1989)



Plate 119: Remnant of the north facing elevation of building 6 looking south (2005)



Plate 120: Remnant of building 6 northern wall, looking east towards buildings 8 & 9 (2005)



Plate 121: Northern wall of building 6, looking towards building 7 (2005)



Plate 122: South facing elevation of building 6 (left) and 9 (right) looking northeast
(© David Brown1989)



Plate 123: South facing elevation of building 6 showing ground floor openings
(© David Brown1989)



Plate 124: Secondary large openings in southern wall of building 6, looking northwest
(© David Brown1989)



Plate 125: Internal elevation of building 7 noting straight joint between buildings 5 & 6, and doorways into privy tower
(© David Brown 1989)



Plate 126: Remnant of building 7 (privy tower) with access cleaning hatch at base (2005)



Plate 127: View down embankment towards building 8 looking east, note doorway into building 9 onto of building 8 (2005)



Plate 128: General view of building 8 situated in the corner between buildings 6 & 9, looking northeast (film 14:9)



Plate 130: Building 8 viewed along the line removed pipe feed to building 9 (IF 13) (film 5:9)

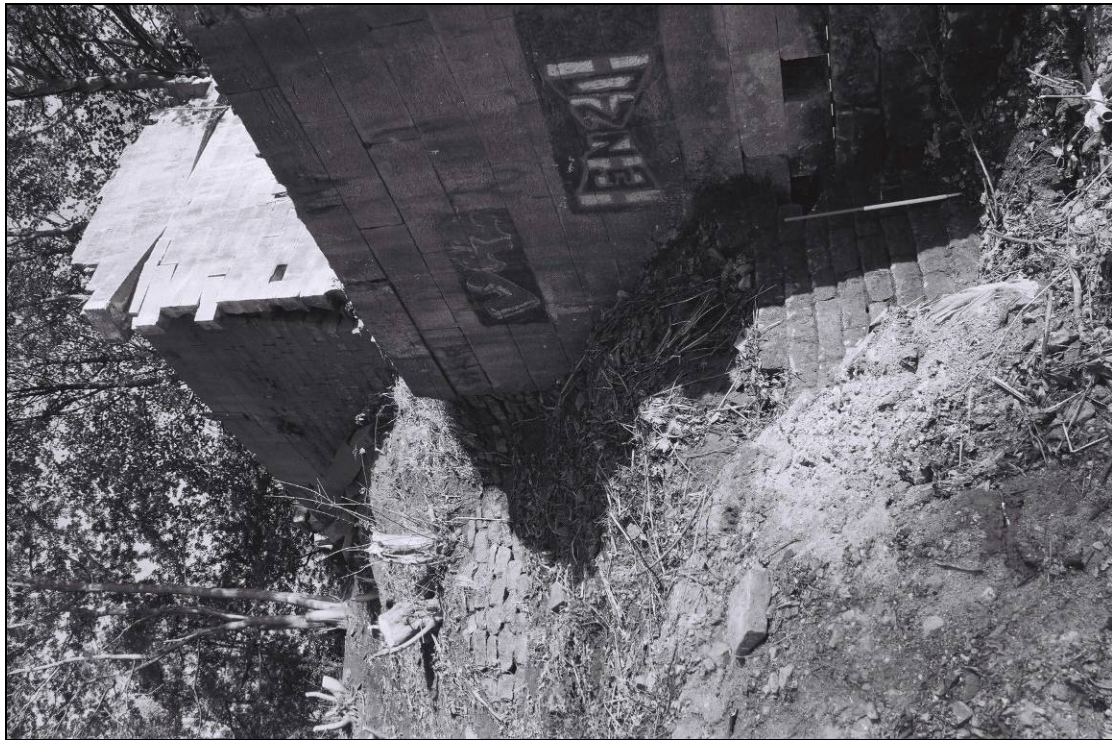


Plate 129: Detail of West facing elevation of building 8, note retaining wall and hole for hold down bolts (film 15:30)

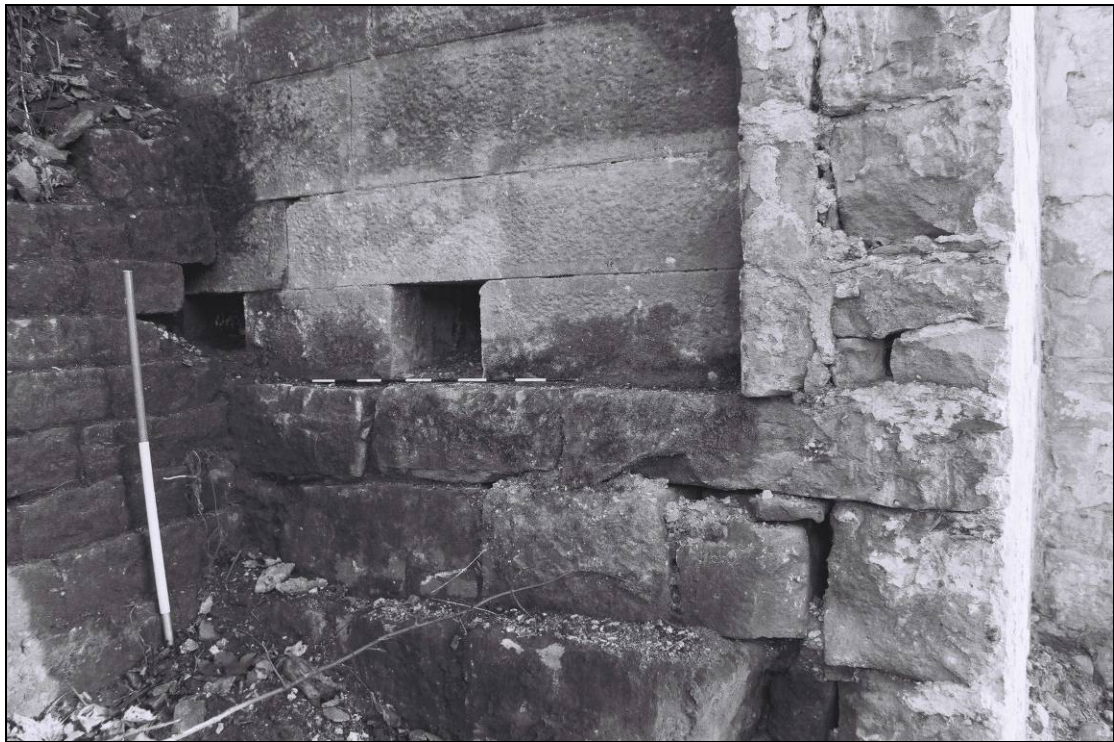


Plate 131: Access holes to hold down bolts in masonry of building 8, and truncated remains of the northern wall of building 6 (film 15:33)

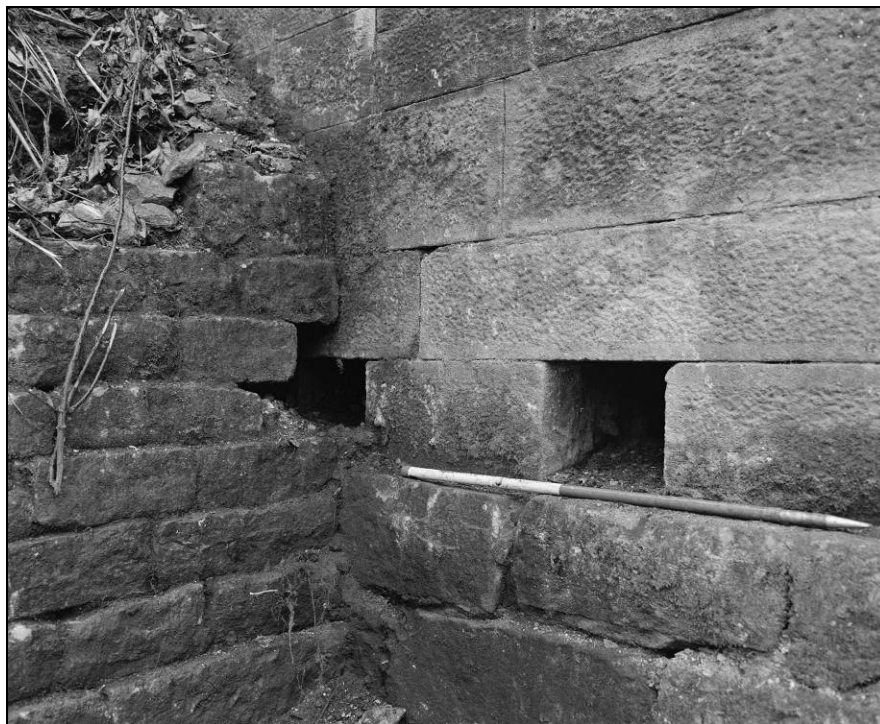


Plate 132: Detail of abutment between building 8 and a retaining wall (film 14:7)



Plate 133: Detail of iron hold-down bolts within fabric of structure 8 (film 15:34)

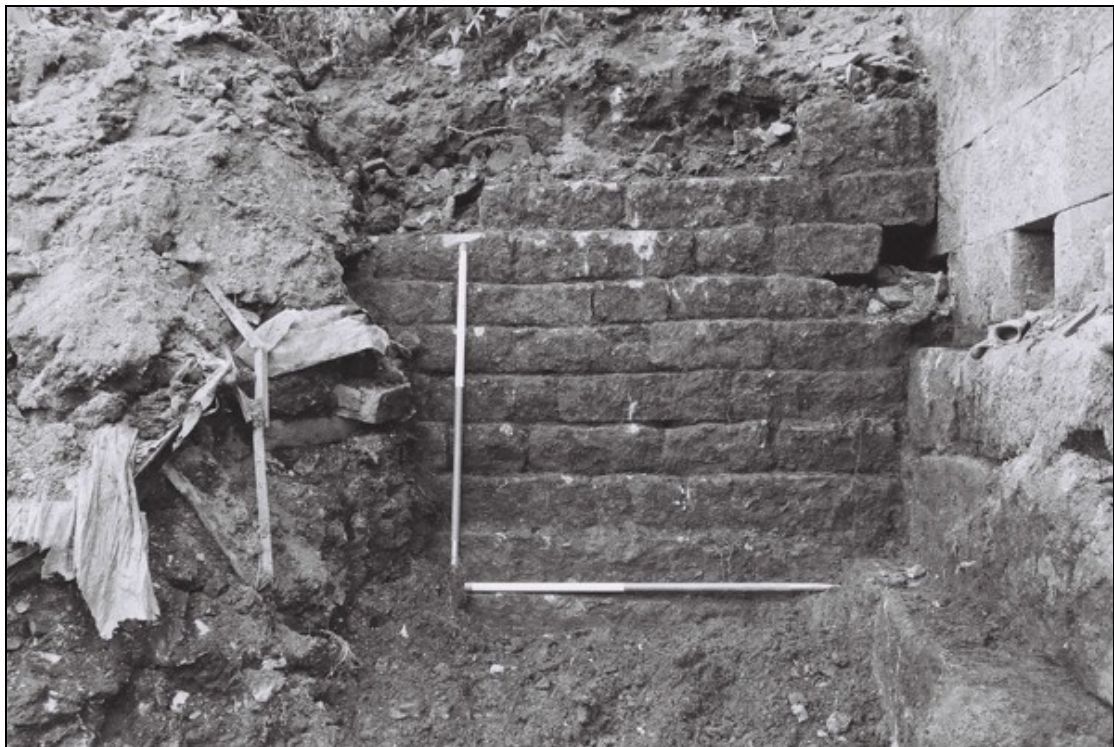


Plate 134: Eastern end of embankment retaining wall (film 1:4)



Plate 136: Joint between buildings 8 & 9, showing red brick blocking within fabric of building 8 (film 15:31)



Plate 135: Top of building 8, looking south (film 16:34)



Plate 137: Internal view of building 6 showing secondary cast iron columns running centrally along the ground floor, and an original column on the second floor (© David Brown1989)



Plate 138: Internal shot of building 6, looking west into building 5 (© David Brown1989)



Plate 139: Internal elevation of the northern wall of building 6 looking northwest, with some floor joists still in situ (© David Brown1989)



Plate 140: Internal elevation of the eastern wall of building 6, showing large wall boxes relating to the transferral of power between the water wheel and machinery in buildings 5 & 6 (© David Brown 1989)



Plate 141: North-eastern corner of building 6 (film 15:28)



Plate 142: Detail of vertical joint between buildings 6 & 9
(film 14:3)



Plate 143: General view of building 6, noting timber queen-post roof truss, and columns beneath it on the sixth floor (© David Brown1989)



Plate 144: Detail of vertical joint between buildings 6 & 9, looking north (film 15:26)



Plate 145: South facing façades of building 9, 10, & 11 looking north (from left to right) (2005)



Plate 146: View looking southwest along top and east facing elevation of building 9 & structure 14 (2005)



Plate 147: General view of building 9 from pen trough (2005)



Plate 148: First floor of building 9 from pen trough (2005)



Plate 149: General view of the remnants of building 9, looking east (film 5:1)



Plate 150: General view of the remnants of wheelpit (building 9), looking north
(film 11:9)



Plate 151: East facing elevation of pentrough (building 9 & s IF 14) (film 9:1)



Plate 152: General view from first floor level of building 9 (film 11:5)

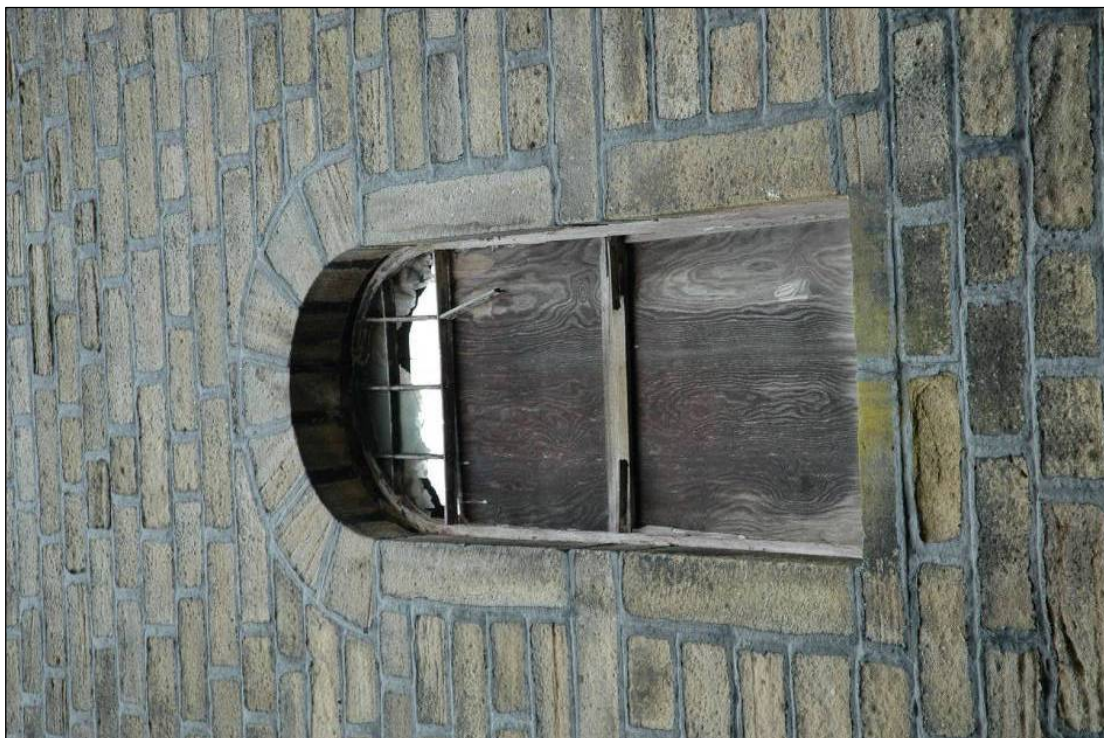


Plate 153: Arched window with wooden frame in south facing elevation of building 9 (2005)

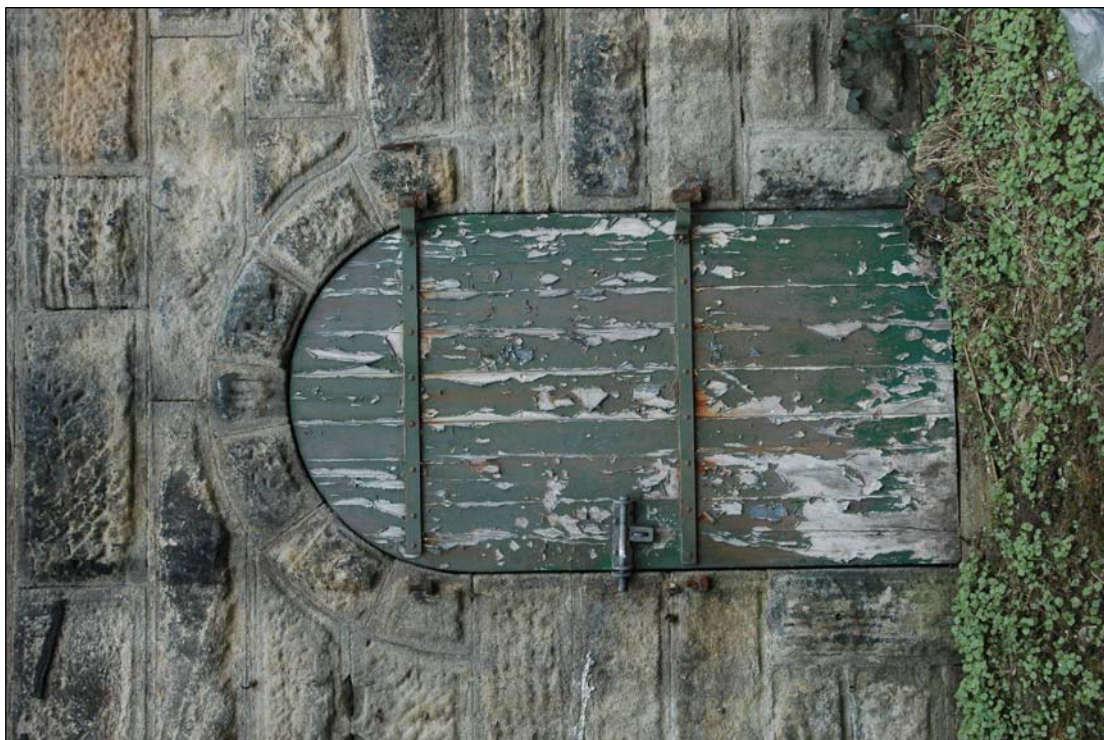


Plate 154: Detail of arched battened door in south facing elevation of building 9, note rough finished stonework (2005)



Plate 155: East facing elevation of building 9 showing iron tie bracket and arched window flanked by blocked windows (2005)



Plate 156: Blocked window on first floor of building 9 from pen trough, note first floor walk way (2005)

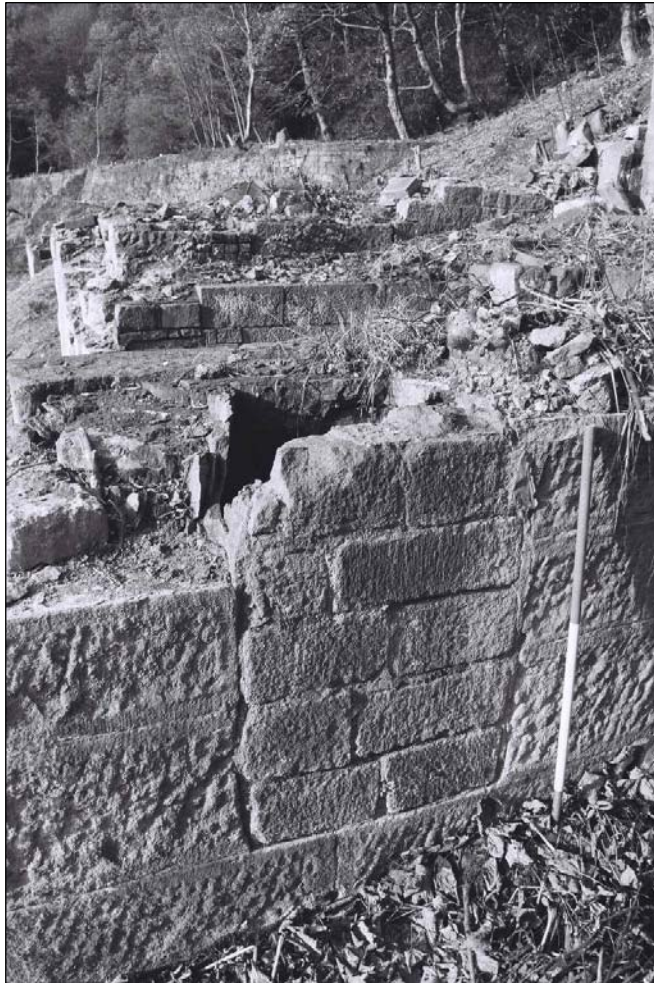


Plate 157: Blocking in east facing elevation of building 9, with matching blocking in western elevation visible in background (film 16:22)



Plate 158: Blocking in eastern wall of building 9, looking east (film 16:32)



Plate 159: Detail of Iron tie plate on east facing elevation of building 9 (film 16:21)



Plate 160: General shot of pentrough (structure 14) leading in to building 9 (film 9:3)



Plate 161: Detail of top of pentrough wall showing clay core (Film 9:10)



Plate 162: Detail of two stone slabs forming bridge over pentrough and supporting an iron grill below, looking west (film 16:9)



Plate 163: West facing elevation of structure 14, noting diagonal scar of trash guard (film 9:5)



Plate 164: Alterations made to southern end of pentrough, iron tie plate, and iron bracket for a sluice (film 9:9)



Plate 165: Alterations to southern end of pentrough, and iron rail for sluice (film 16:7)



Plate 166: North facing elevation of pentrough, note shuttered concrete alterations (film 16.5)



Plate 167: Detail of metal pipe in channel leading from pentrough to wheel pit (film 16:3)

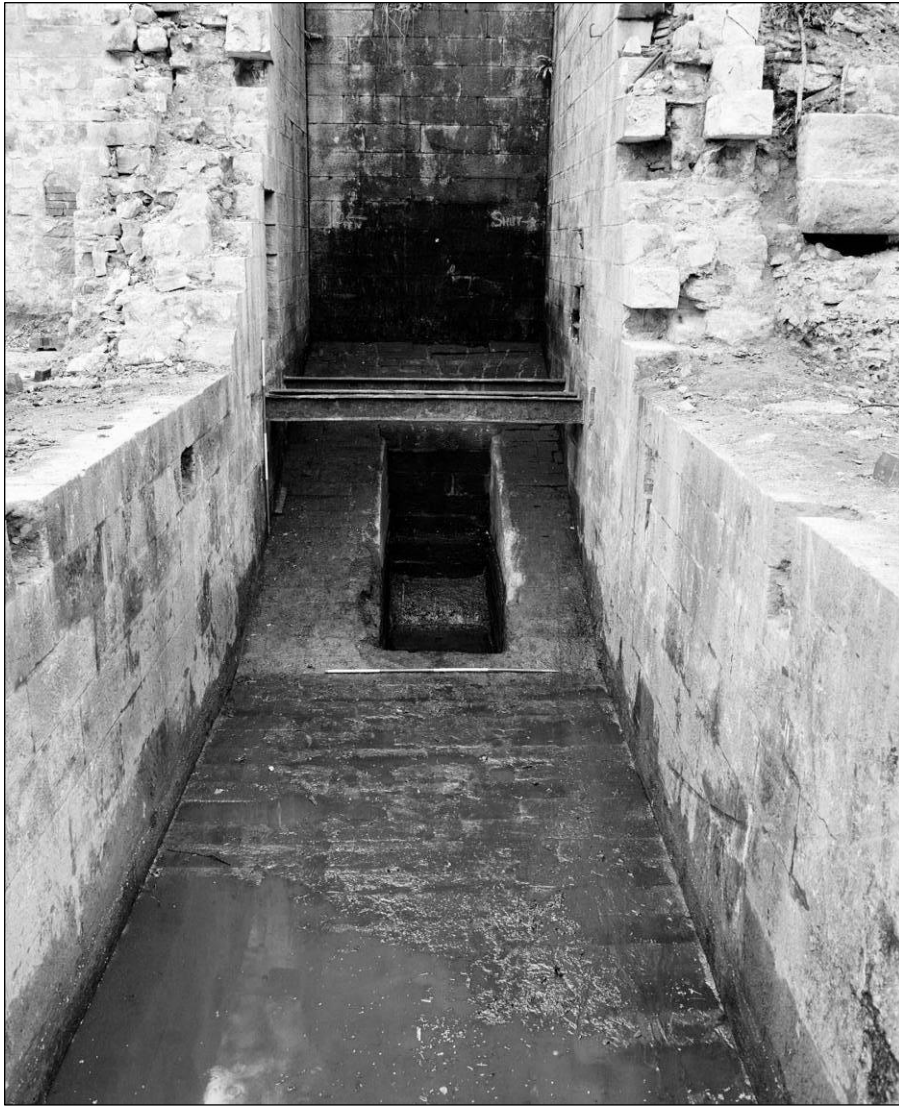


Plate 168: General view of base of wheel pit looking north (film 11:7)

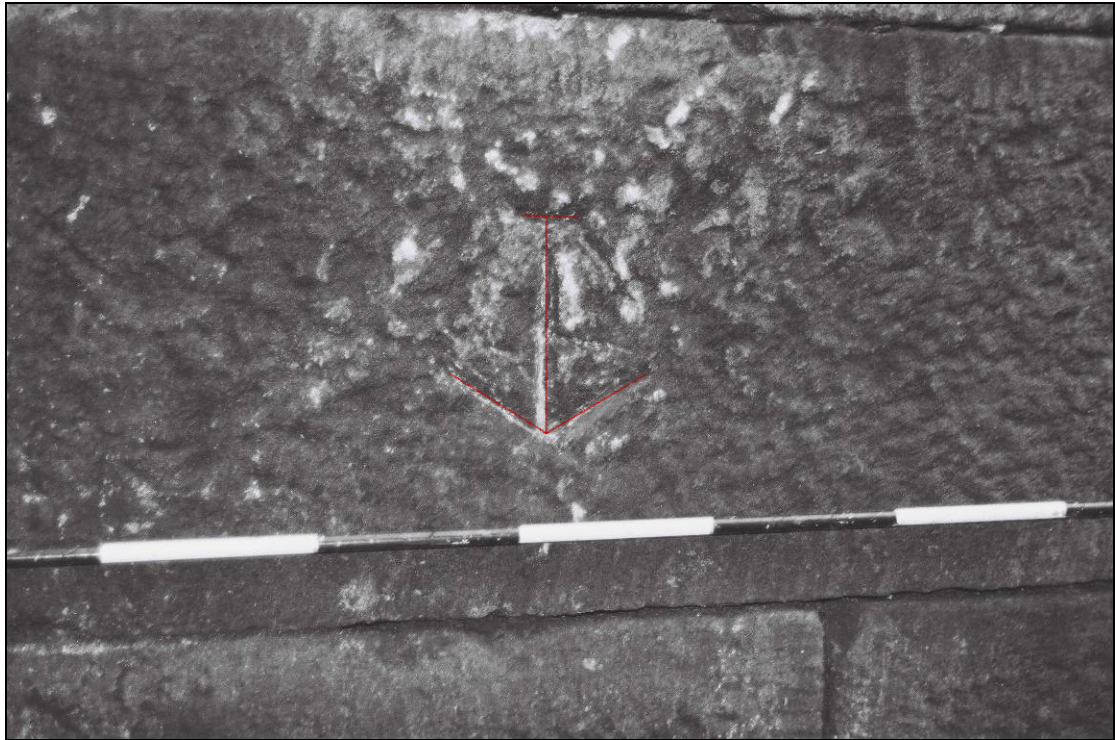


Plate 169: Detail of masons mark on masonry of wheel pit (film 12:15)

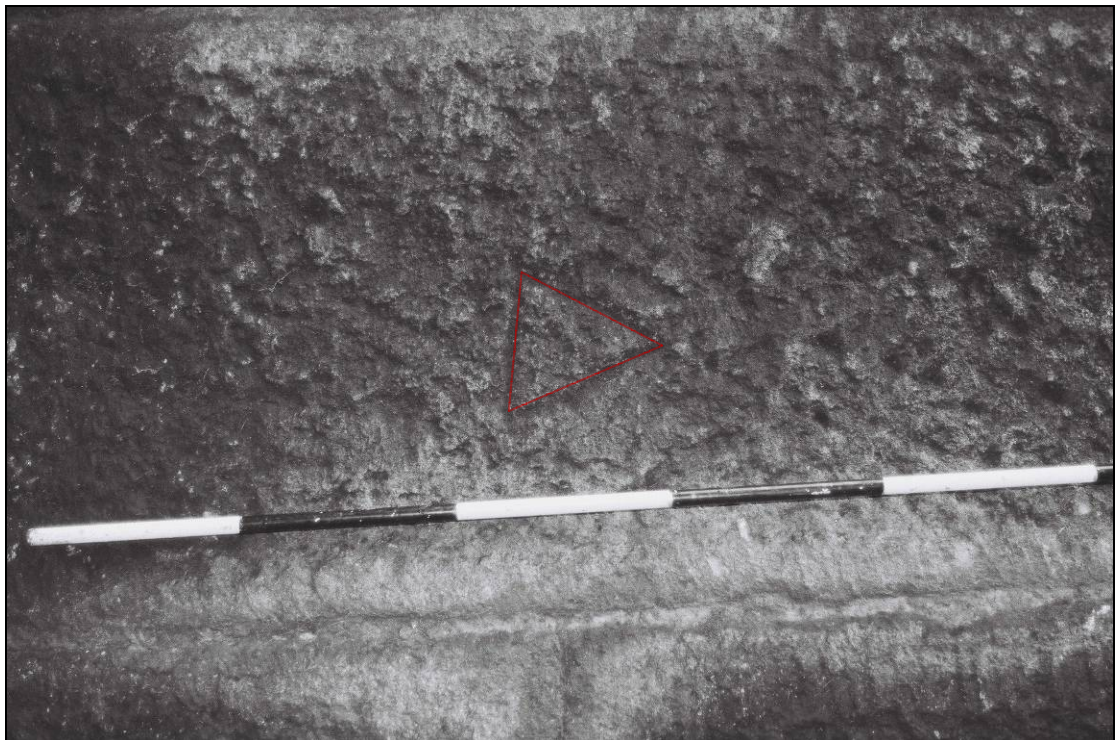


Plate 170: Detail of masons mark on masonry of wheel pit (film 12:17)



Plate 171: Detail of masons mark on wheel pit masonry (film 12:25)



Plate 172: Detail of masons mark on wheel pit masonry (film 12:27)

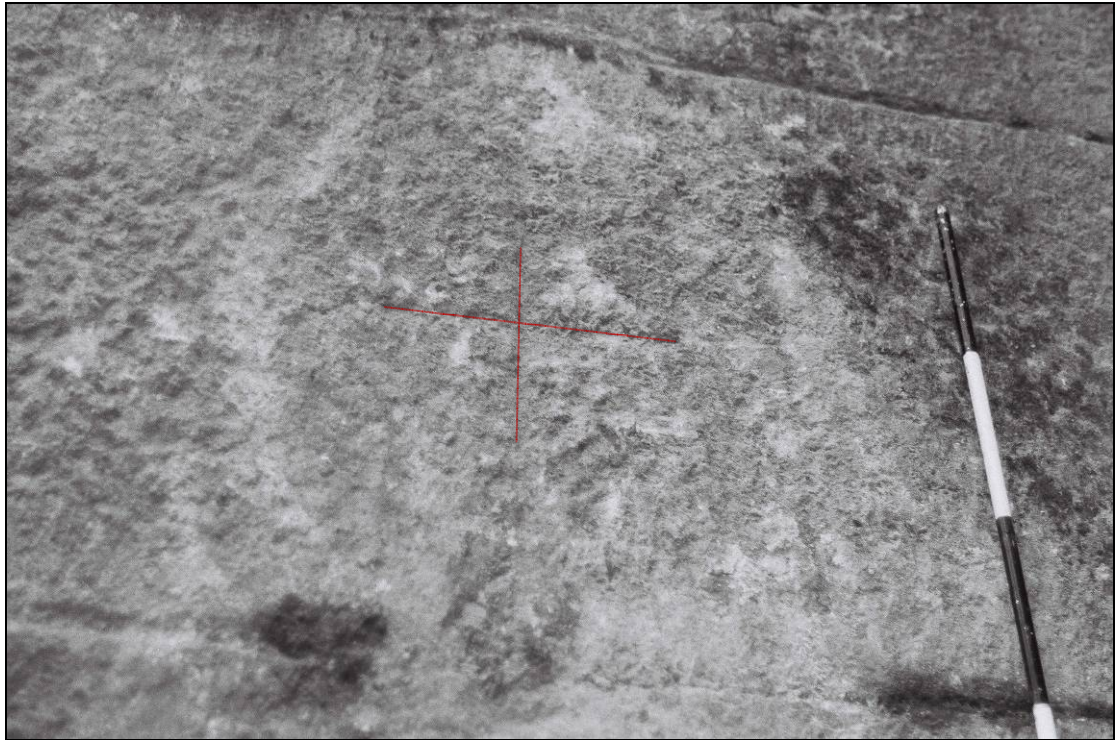


Plate 173: Detail of masons mark on wheel pit masonry (film 12:29)



Plate 174: Detail of masons mark on wheel pit masonry (film 12:31)



Plate 175: Detail of stone slabs, forming floor of wheel pit (film 12:5)



Plate 176: Angled stones protruding from northern wall of building 9 at third floor level (2005)



Plate 177: Wall scar left from water wheel on eastern wall building 9 (film 13:5)

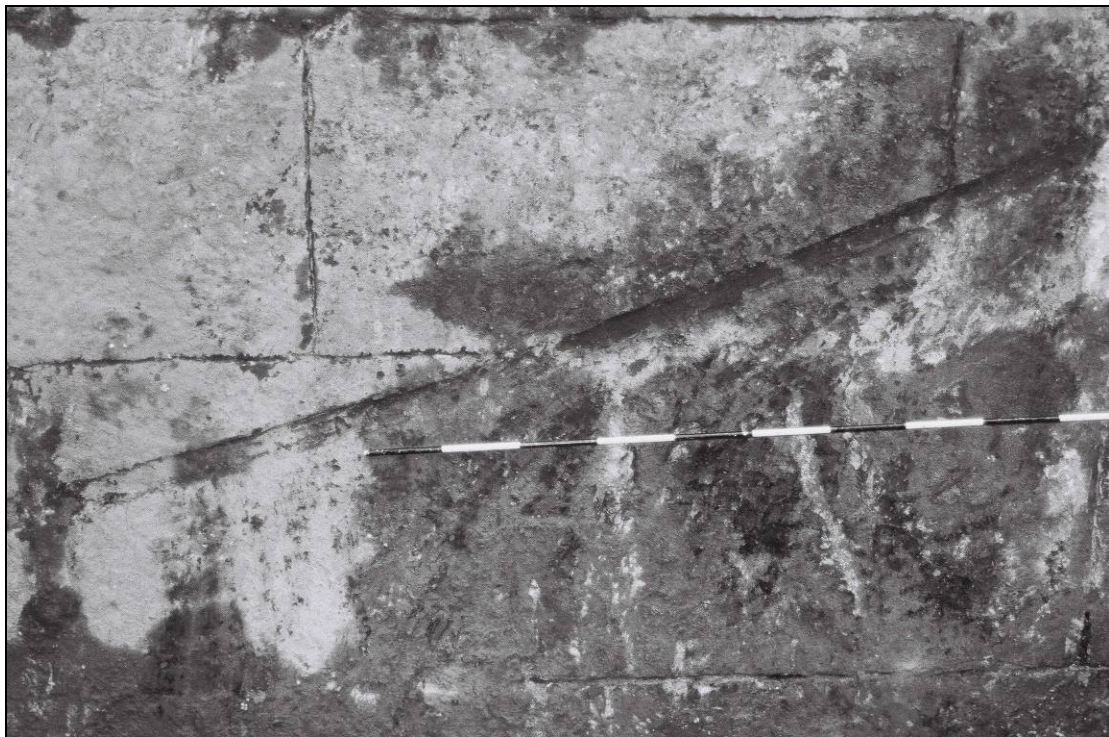


Plate 178: Detail of scar left by water wheel (film 12:35)



Plate 179: Western wall of wheel pit, note no scar from water wheel (film 14:1)



Plate 180: Wall scars in the western wall of building 9 pertaining to the transferral of power into building 6 (2005)



Plate 181: Detail of lewis hole in ashlar stone of ramp in northern half of building 9
(film 12:23)

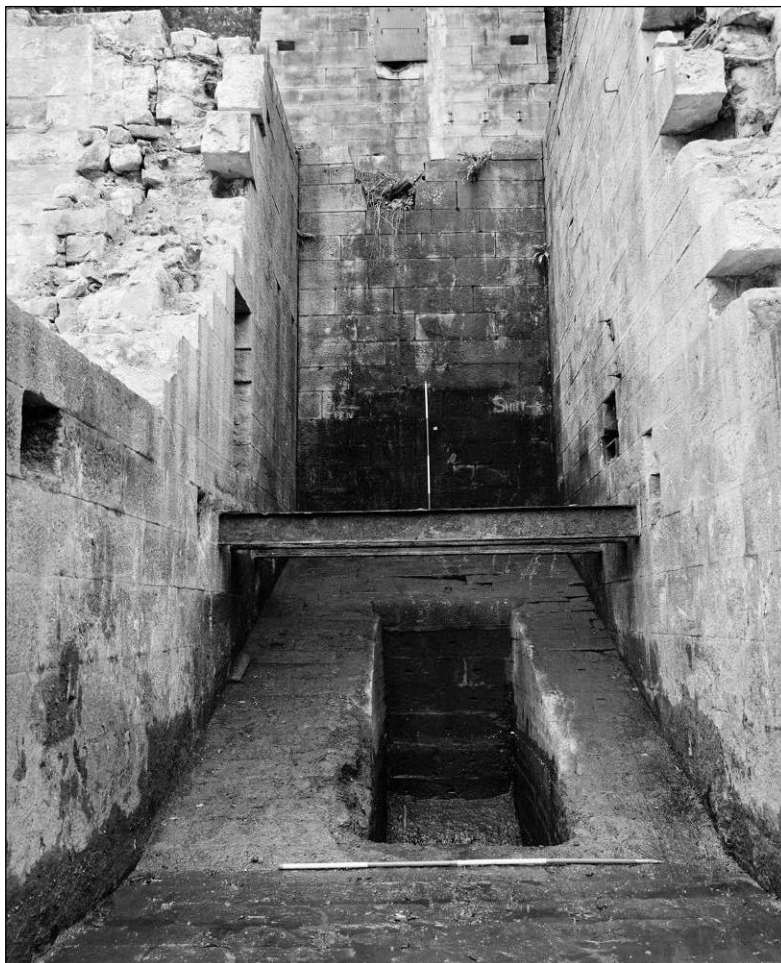


Plate 182: Ashlar lined ramp in northern half of wheel pit (film 13:1)



Plate 183: Iron bracket and gap in masonry of east wall of building 9, possibly for power transmission from building 10 (2005)



Plate 184: Internal view looking north of inserted ground floor within building 9 (2005)



Plate 185: Inserted second timber floor within building 9 , looking north (2005)



Plate 186: RSJs and iron bracket sunk into wall at northern end of the wheel pit in building 9 (film 14:4)



Plate 187: Sump sunk into ramp, note shuttered concrete sides (film 13:3)



Plate 188: South facing elevation of building 9 (film 11:3)



Plate 189: Detail of blocked feed pipe from pen trough blocked by iron plate, note concrete alterations (film 16:29)



Plate 190: Detail of feed pipe from pen trough blocked by iron plate, note concrete alterations (film 16:24)



Plate 191: Channel in top of wheel pit's northern wall (film 16:27)



Plate 192: Detail of Iron bracket in eastern wall of wheel pit (film 12:9)



Plate 193: Remnant of iron bracket in wheel pit, building 9 (film 12:7)



Plate 194: Detail of
Inserted recess in
western wall of wheel
pit (film 12:13)

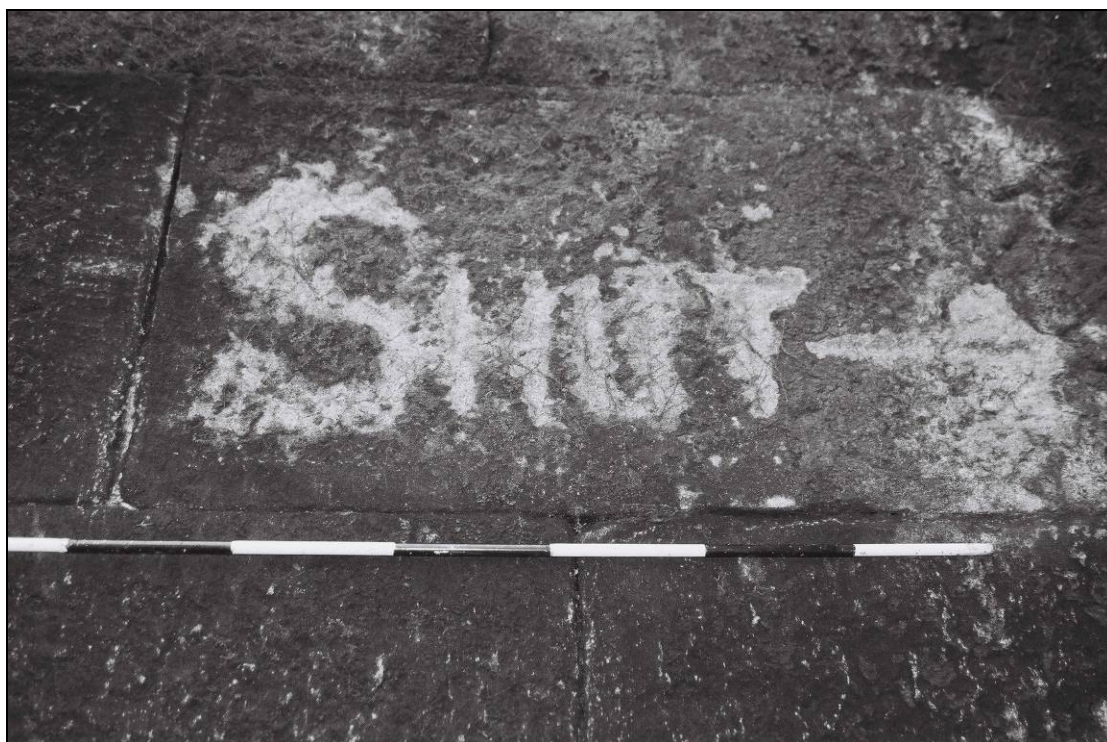


Plate 195: Incised instruction in northern wall of wheel pit (film 12:19)



Plate 196: Incised instruction in northern wall of wheel pit (film 12:21)



Plate 197:
Southern internal
elevation of wheel
pit, noting steps
and large rounded
blocks (film 13:9)



Plate 198: Detail of water outlet from wheel pit to head-goit (film 13:7)

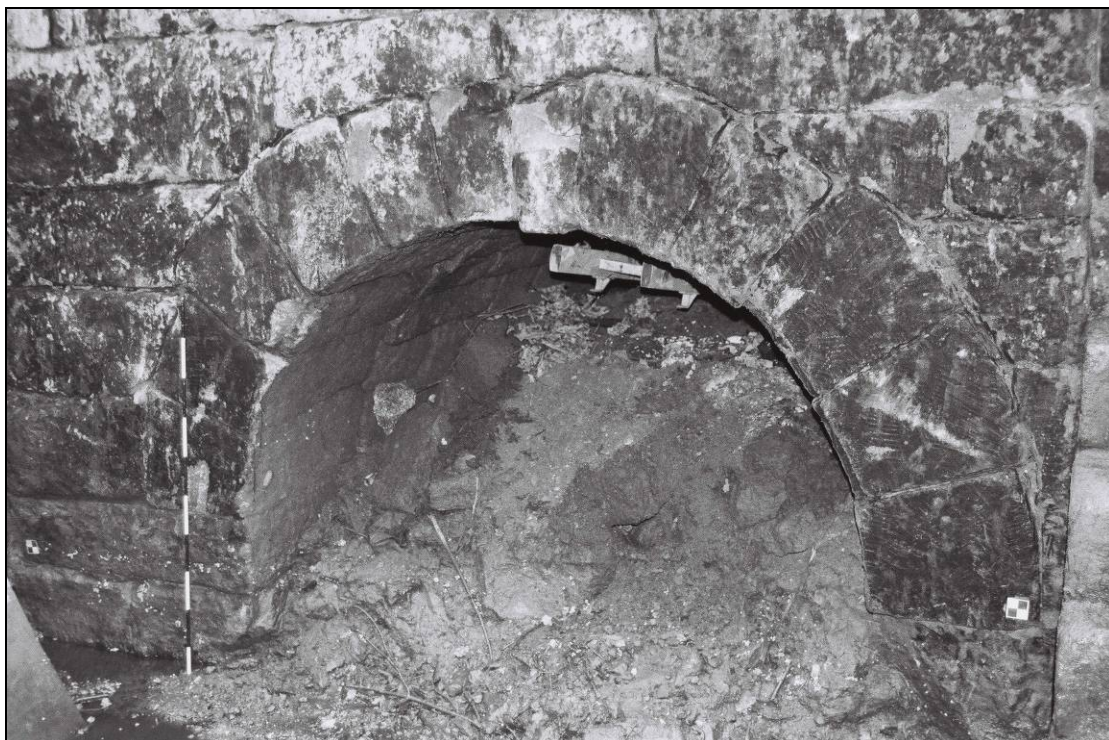


Plate 199: Detail of water outlet from wheel pit (film 12:33)



Plate 201: Stone staircase from wheel pit to ground level of building 9 (film 12:3)



Plate 200: Detail of stone stairs down to wheel pit from ground floor of building 9, looking south (2005)