

# AINSCOUGH MILL, BURSCOUGH, WEST LANCASHIRE



## Historic Building Recording (Volume 2 – Plates)

Matrix Archaeology

December 2017

AINSCOUGH MILL,  
BURSCOUGH,  
WEST LANCASHIRE

Historic Building Recording  
(Volume 2 – Plates)

Report No. 2017-12  
(Project Code: MA513)

Client: Persimmon Homes (Lancashire) Ltd

© Matrix Archaeology Ltd,  
36 Highfield Road,  
Stretford,  
Manchester  
M32 8NQ  
matrixarch@btconnect.com

December 2017



Plate 1. Block C to right, Building 18 bottom centre, chimney above, and Building 19 to left, all viewed from cherry-picker to south.



Plate 2. South elevation of Building 19, viewed from south.



Plate 3. Building 19, viewed from north-west.



Plate 4. Building 19, south elevation, cast-iron lintel, viewed from south.



Plate 5. Base of chimney (14), with decorative offset, viewed from south.



Plate 6. North internal elevation of Building 13, viewed from south-west.



Plate 7. Mill viewed from north-west.





Plate 8. Chimney and Building 19, viewed from north-west.



Plate 9. Boiler house east part (Building 9), viewed from north. Blocked arch for boiler blowdown pipes arrowed.



Plate 10. Boiler House central part (Building 9), viewed from north.



Plate 11. Mill viewed from north-east, with railway bridge in foreground.



Plate 12. Close up of mill from north-east, Building 9.



Plate 13. Partially blocked windows of Building 8 (Beam Engine House), viewed from south-east.



Plate 14. Building 6 (right), building 2 (left), viewed from south-east.



Plate 15. Building 2, viewed from east, after demolition of Building 1.



Plate 16. Boiler House ground floor (Building 9), viewed from south-west. Arch in canal wall arrowed, probably for boiler blowdown pipes.



Plate 17. Boiler House ground floor (Building 9), viewed from north-west.



Plate 18. Boiler House ground floor (Building 9), viewed from north-east.



Plate 19. Boiler House ground floor (Building 9), viewed from north. Large cast-iron wallbox, probably related to 1901 inverted vertical steam engine.





Plate 20. Boiler House upper floor (Building 9), viewed from south-west.



Plate 21. Boiler House upper floor (Building 9), viewed from north-west.



Plate 22. Boiler House upper floor (Building 9), viewed from south-east.



Plate 23. Original external Boiler House doorway, viewed in east wall of Building 10.



Plate 24. Looking into Engine House (8), from base of Stair Tower (7), viewed from west. Gritstone engine bed is topped by an iron kerb, which in turn has had a thick concrete floor poured onto it.



Plate 25. Engine House (Building 8), south wall, showing gearwheel housing, viewed from north-west.



Plate 26. Engine House (Building 8), west end of south wall, showing first motion shaft housing, viewed from north-east.



Plate 27. Engine House (Building 8), basement, viewed from east, showing cylinder bed in centre, and inserted ironwork to support later engine.



Plate 28. Engine House (Building 8), basement, east end, viewed from north, showing large cast-iron wallbox, now infilled, in centre



Plate 29. Engine House (Building 8) first floor, viewed from north-west.



Plate 30. Engine House (Building 8) first floor, viewed from south-west.





Plate 31. Engine House (Building 8), first floor, viewed from north-east, showing gritstone bed in centre.



Plate 32. Engine House (Building 8), second floor, viewed from north-west, original timber ceiling over.



Plate 33. Engine House (Building 8), second floor, viewed from east.



Plate 34. Original mill (Building 6), first floor, south-east corner, viewed from north-west.



Plate 35. Original mill (Building 6), first floor, viewed from south-west, showing east-west cast-iron floor beams, probably intended to counter lateral thrust of railway embankment raised against east mill wall.



Plate 36. Original mill (Building 6), first floor, west wall, viewed from north-east, showing blocked windows.



Plate 37. Original mill (Building 6), second floor, viewed from north-east, showing cast-iron column to timber beam connections.



Plate 38. Original mill (Building 6), roof structure being replaced upon original timber king-post trusses.



Plate 39. Stair Tower (Building 7), ground level, viewed from south-west.



Plate 40. Stair Tower (Building 7), first floor, viewed from north-west, showing 'ghost' of removed stairs.



Plate 41. Stair Tower (Building 7), first floor, viewed from north.



Plate 42. Stair Tower (Building 7), second floor, viewed from west, showing 'ghost' of removed stairs.



Plate 43. Former Beam Engine House (Building 11), ground floor, northern part, viewed from north-west.



Plate 44. Former Beam Engine House (Building 11), first floor, south wall, showing circular 'ghost' of engine flywheel, probably caused by oil spatter on whitewash.



Plate 45. Former Beam Engine House, ground floor, south wall, showing blocked aperture with gritstone bed beneath, with circular score marks (arrowed), from pinion wheel on first motion shaft.



Plate 46. Former Beam Engine House, first floor, east end, blocked doorway to left, previously accessing Stair Tower (Building 7).





Plate 47. Building 17, ground floor, east wall, double doorway with elliptical head and rusticated voussoirs, which formerly led into Building 6.



Plate 48. Building 17, ground floor, view looking northwards, large double doorway visible on right (east) side.



Plate 49. Building 17, ground floor, south end, viewed from north.



Plate 50. Building 17, ground floor, north end, viewed from south, with gritstone beds related to beam engine house 2 visible behind column, and blocked openings to left.



Plate 51. Building 17, roof level, showing cast-iron roof trusses, viewed from south.



Plate 52. Building C, after fire, north internal wall, showing outline of clerestory.



Plate 53. Building C, following fire, north internal wall, with entablature housing for beam engine 2, arrowed.



Plate 54. Building C, south elevation, viewed from cherry picker.



Plate 55. Building 10 (New Warehouse), ground floor, western part, viewed from south-east.



Plate 56. Building 10 (Wheat Receiving Plant), ground floor, south wall, viewed from north.





Plate 57. Building 10 (Wheat Receiving Plant), ground floor, viewed from north.



Plate 58. Building 10 (Wheat Receiving Plant), ground floor, viewed from south, showing doorway into Boiler House.



Plate 59. Pumphouse (Building 12), ground floor, viewed from north.



Plate 60. Pumphouse (Building 12), ground floor, pump mechanism, viewed from north.



Plate 61. Water Tower (Building 5), viewed from south-west, from cherry picker.



Plate 62. Building 5, ground floor level, east-west passage, viewed from west.



Plate 63. Building 5, first floor level, view from west.



Plate 64. Building 5, first floor level, view from east.



Plate 65. Building 4, first floor level, view from east.



Plate 66. Building 4, first floor level, view from south, looking into Building 6.



Plate 67. Building 2, first floor level, view from south-west, looking out onto railway Embankment.





Plate 68. Warehouse Central Bay (Building 1B), viewed from east, line of blocked taking-in doorways can be seen where pattress plates are affixed.



Plate 69. Warehouse Northern and Central Bay (Buildings 1A & 1B), viewed from south-west.



Plate 70. Warehouse Southern Bay (Building 1C) under demolition, viewed from south-west. Note heavy timber beams and columns and roof trusses.



Plate 71. Warehouse Southern Bay (Building 1C) under demolition, viewed from south.



Plate 72. Warehouse Southern Bay (Building 1C), ex situ timber beam, showing soffit face where timber column located.



Plate 73. Warehouse Central Bay (Building 1B) under demolition, viewed from south, showing internal steel silos and concrete columns.



Plate 74. Warehouse Northern Bay (Building 1A), about to be demolished, viewed from south-west.



Plate 75. Warehouse Northern Bay (Building 1A), about to be demolished, viewed from south.



Plate 76. Warehouse Northern Bay (Building 1A), about to be demolished, viewed from south-east.



Plate 77. Warehouse Northern Bay (Building 1A), following demolition, viewed from south-west.



Plate 78. Warehouse Northern Bay (Building 1A), following demolition, viewed from south.



Plate 79. Warehouse Northern Bay (Building 1A), showing ground floor wrought-iron columns, following demolition.



Plate 80. Warehouse Northern Bay (Building 1A), following demolition, viewed from south-east.



Plate 81. Mansion House, ground floor, Hallway (Room G1), showing ghost of staircase, viewed from south-west.



Plate 82. Mansion House, ground floor, Original Kitchen (Room G3), viewed from north.





Plate 83. Mansion House, ground floor, Dining Room? (Room G2), viewed from north.

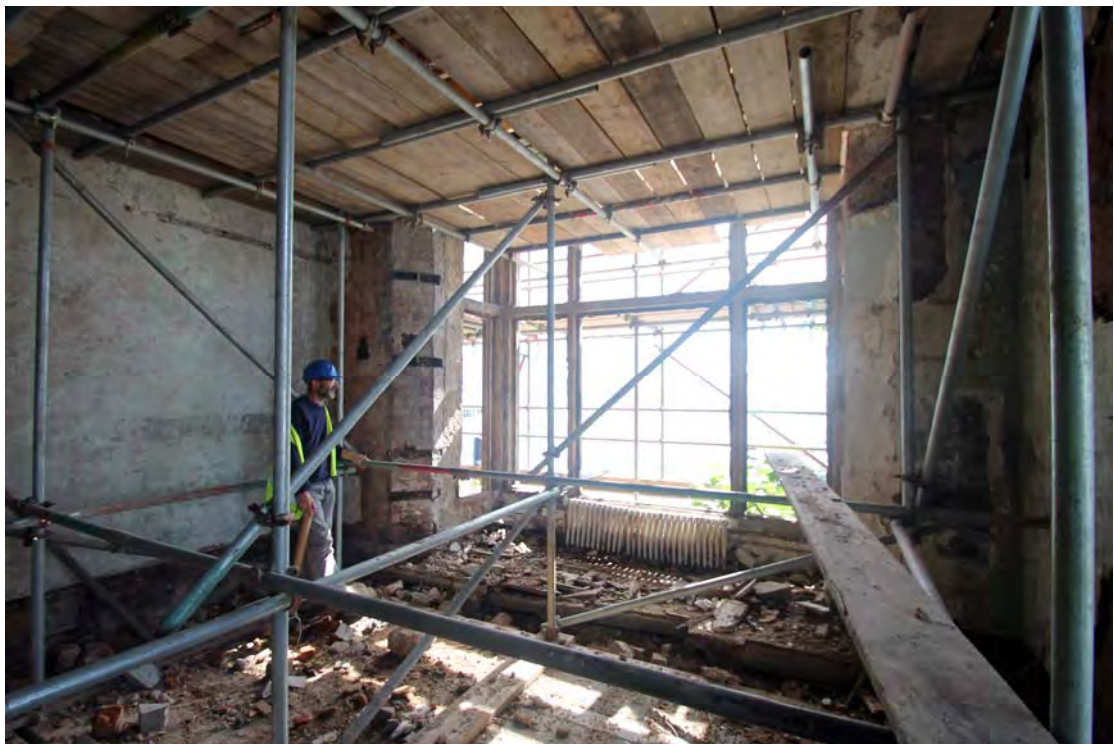


Plate 84. Mansion House, ground floor, Parlour? (Room G4), viewed from north.



Plate 85. Mansion House, ground floor, Later Kitchen (Room G8), viewed from south.



Plate 86. Mansion House, ground floor, Room G9, viewed from north-east.



Plate 87. Mansion House, first floor, south elevation, showing upper bay window structure, viewed from south-east.



Plate 88. Mansion House, first floor, south front, showing upper part of doorcase.



Plate 89. Mansion House, first floor, room F1, viewed from south.



Plate 90. Mansion House, first floor, room F1, viewed from west. Wallpaper suggests location of stairwell.



Plate 91. Mansion House, first floor, room F2, viewed from north-west.



Plate 92. Mansion House, first floor, room F4, viewed from north.



Plate 93. Mansion House, first floor, room F4, viewed from south-west.



Plate 94. Mansion House, first floor, room F8, viewed from south.



Plate 95. Mansion House, first floor, room F9, viewed from east.



Plate 96. Mansion House, first floor, looking over room F2 towards pediment, viewed from north-east.



Plate 97. Mansion House, first floor, view over room F2, viewed from south-east.



Plate 98. Mansion House, first floor, view of pediment, viewed from south-east.





Plate 99. Mansion House, first floor, view northwards across building from pediment.



Plate 100. Mansion House, first floor, view over room F4, from south.



Plate 101. Mansion House, first floor, view over room F7, viewed from south-east.