

Photographic Survey
of a wall to the rear of
NO. 6 COTHAM ROAD,
BRISTOL.

BRSMG2009/20

for
Dr. A. Zimbler



Report No. 2094/2009
BHER No. 24705



Bristol and Region Archaeological Services

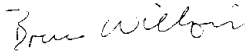

St. Nicholas Church, St. Nicholas Street, Bristol, BS1 1UE. Tel: (0117) 903 9010 Fax: (0117) 903 9011



Photographic Survey
of a wall to the rear of
NO. 6 COTHAM ROAD,
BRISTOL.

Centred on
N.G.R. ST 58300 73814

Client: Dr. A. Zimbler
Agent: Casley Rudland

<i>Author:</i>	Simon Roper
<i>Approved by:</i>	Bruce Williams
<i>Signature:</i>	
<i>Date Issued:</i>	27th August 2009 

Site Background

Bristol and Region Archaeological Services (BaRAS) were commissioned by Casley Rudland on behalf of Dr. A. Zimble to undertake an archaeological Photographic Survey of the rear boundary wall of No. 6 Cotham Road (NGR ST 58300 73814) prior to its repair. The fieldwork was undertaken on the 13th of January 2009 by Simon Roper, who also compiled this report. The project archive will comprise a CD with a series of digital photographs of the wall saved on it, it will be deposited with Bristol City Museum & Art Gallery under the Accession Number 2009/20 and a copy of the report will be sent to the National Monuments Record maintained by English Heritage. The project has been entered in the Bristol Historic Environment Record as: BHER event no. – 24705.

Historic research suggests that the boundary wall was originally constructed at some point between 1825 and 1841. The line of the boundary wall is clearly depicted on the 1841 Tithe map, however on Sturge's map of 1825 Cotham Road itself is not depicted, with the area to the immediate north of Clarence Place still shown as fields.

The wall itself comprises two principal elements; the original stone built wall and a brick extension built on top of the stonework. On the north-west side of the wall approximately 1 m of stone work is visible. On the south-east side of the wall approximately 1.5 m of stone work is visible, the ground level having been reduced on this side and a brick retaining wall being built in front of the original boundary wall. The survey carried out by Casley Rudland indicates a total height for the stone wall as approximately 2 m, and the length is 25.9 m. The wall is of rubble construction, with no coursing evident; the south-west end of the wall has been repointed with a hard white cement based mortar, the original mortar having degraded quite badly along its length. The brick wall comprises three courses of bullnose bricks with twenty-six courses of Flemish bond brickwork above them, and a single course of bullnose bricks topping the wall. Brick piers spaced approximately 4.3 m apart help to strengthen the upper brick wall.

The Photographic Survey

The photos are split into two folders for each face of the wall, however the photo numbering is uninterrupted between the two. The first folder contains the photos of the north-west face of the wall. These are ordered with general views of the wall and garden first, followed by oblique views of the wall, followed by photos taken at right angles to the wall. The photos of the stone wall were taken from the south-west end to the north-east end. The first two frames and the last three (frames 11-12 and 17-19) were taken at 2 m intervals and overlap with each other, while those in between (frames 13-16) were taken where there was sufficient space between the wall and the bushes, and therefore do not overlap. They are all however sequential from south-west to north-east. Finally a series of photos of the upper brick part of the wall were taken at 4 m intervals, although vegetation frequently obscures the brickwork.

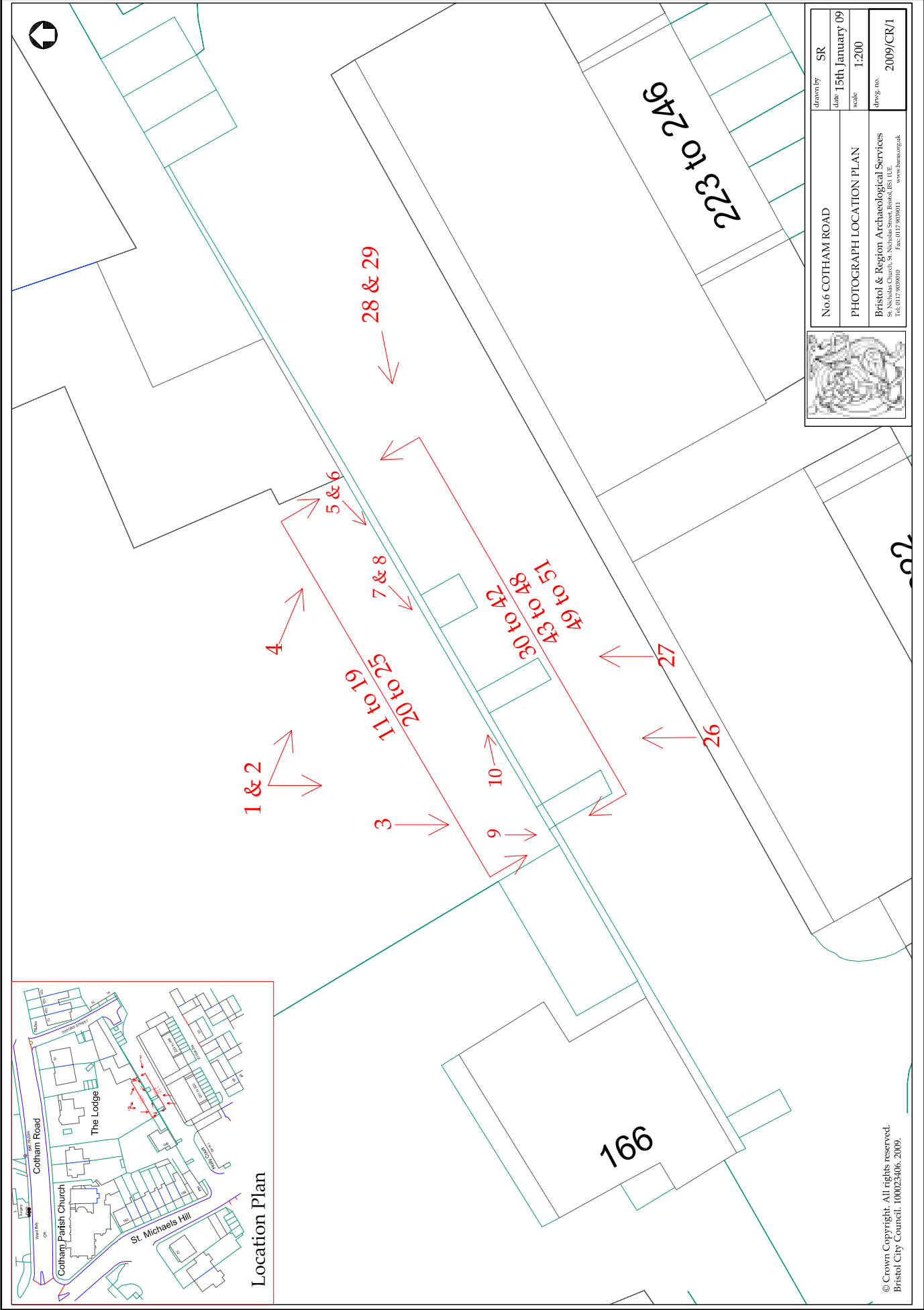
The second folder contains the photos of the south-east face of the wall. These are ordered with oblique general views of the wall first, followed by photos of the stone wall taken at 2 m intervals and at right angles to the wall, followed by photos of the upper brick part of the wall taken at 4 m intervals, and finally a series of photos of the whole wall taken at right angles. All of the photos taken at right angles to the wall were sequential and overlapping, from the south-west end to the north-east end of the wall.

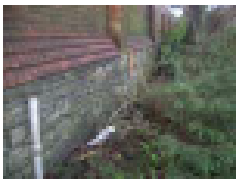
Photo register

Below is a complete register of all the photos taken of the structure on the 13th January 2009, including a description, the direction the camera was facing, and the size of scale if any was used.

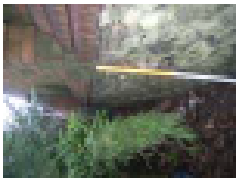
No.	Description	Direction	Scale
1	General view of the north-west face of the wall	South	1m
2	General view of the north-west face of the wall	South-east	1m
3	South-west corner of wall	South	1m
4	North-east corner of wall	South-east	1m
5	Oblique view from the north-east corner	South-west	1m
6	Oblique view from the north-east end	South-west	1m
7	Oblique view of the wall behind the bushes	South-west	1m
8	Oblique view of the wall behind the bushes	South-west	1m
9	South-west corner of the wall	South	1m
10	Oblique view of the wall behind the bushes	North-east	1m
11	Face on view of the north-west face of the stone wall, south-west to north-east.	South-east	1m
12	Face on view of the north-west face of the stone wall, south-west to north-east.	South-east	1m
13	Face on view of the north-west face of the stone wall, south-west to north-east.	South-east	1m
14	Face on view of the north-west face of the stone wall, south-west to north-east.	South-east	1m
15	Face on view of the north-west face of the stone wall, south-west to north-east.	South-east	1m
16	Face on view of the north-west face of the stone wall, south-west to north-east.	South-east	1m
17	Face on view of the north-west face of the stone wall, south-west to north-east.	South-east	1m
18	Face on view of the north-west face of the stone wall, south-west to north-east.	South-east	1m
19	Face on view of the north-west face of the stone wall, south-west to north-east.	South-east	1m
20	Face on view of the north-west face of the upper brick wall, south-west to north-east.	South-east	2m
21	Face on view of the north-west face of the upper brick wall, south-west to north-east.	South-east	2m
22	Face on view of the north-west face of the upper brick wall, south-west to north-east.	South-east	2m
23	Face on view of the north-west face of the upper brick wall, south-west to north-east.	South-east	2m
24	Face on view of the north-west face of the upper brick wall, south-west to north-east.	South-east	2m
25	Face on view of the north-west face of the upper brick wall, south-west to north-east.	South-east	2m
26	General oblique view of the south-east face of the wall	North	-
27	General oblique view of the south-east face of the wall	North	-
28	General oblique view of the south-east face of the wall	West	-
29	General oblique view of the south-east face of the wall	West	-
30	Slightly oblique view of the south-east face of the stone wall, south-west to north-east, 2 m intervals.	North-west	1m
31	Face on view of the south-east face of the stone wall, south-west to north-east, 2 m intervals.	North-west	1m
32	Face on view of the south-east face of the stone wall, south-west to north-east, 2 m intervals.	North-west	1m
33	Face on view of the south-east face of the stone wall, south-west to north-east, 2 m intervals.	North-west	1m
34	Face on view of the south-east face of the stone wall, south-west to north-east, 2 m intervals.	North-west	1m
35	Face on view of the south-east face of the stone wall, south-west to north-east, 2 m intervals.	North-west	1m
36	Face on view of the south-east face of the stone wall, south-west to north-east, 2 m intervals.	North-west	1m
37	Face on view of the south-east face of the stone wall, south-west to north-east, 2 m intervals.	North-west	1m
38	Face on view of the south-east face of the stone wall, south-west to north-east, 2 m intervals.	North-west	1m
39	Face on view of the south-east face of the stone wall, south-west to north-east, 2 m intervals.	North-west	1m

40	Face on view of the south-east face of the stone wall, south-west to north-east, 2 m intervals.	North-west	1m
41	Face on view of the south-east face of the stone wall, south-west to north-east, 2 m intervals.	North-west	1m
42	Face on view of the south-east face of the stone wall, south-west to north-east, 2 m intervals.	North-west	1m
43	Face on view of the south-east face of the upper brick wall, south-west to north-east, 4 m intervals.	North-west	-
44	Face on view of the south-east face of the upper brick wall, south-west to north-east, 4 m intervals.	North-west	-
45	Face on view of the south-east face of the upper brick wall, south-west to north-east, 4 m intervals.	North-west	-
46	Face on view of the south-east face of the upper brick wall, south-west to north-east, 4 m intervals.	North-west	-
47	Face on view of the south-east face of the upper brick wall, south-west to north-east, 4 m intervals.	North-west	-
48	Face on view of the south-east face of the upper brick wall, south-west to north-east, 4 m intervals.	North-west	-
49	Face on view of the south-east face of the whole wall, south-west to north-east.	North-west	-
50	Face on view of the south-east face of the whole wall, south-west to north-east.	North-west	-
51	Face on view of the south-east face of the whole wall, south-west to north-east.	North-west	-

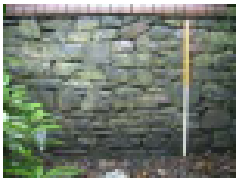




Frame_005.jpg



Frame_010.jpg



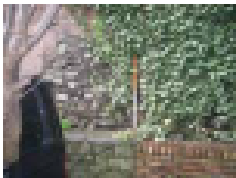
Frame_015.jpg



Frame_020.jpg



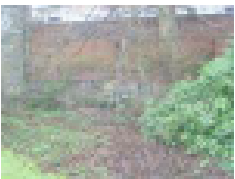
Frame_025.jpg



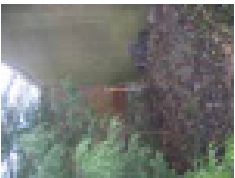
Frame_030.jpg



Frame_035.jpg



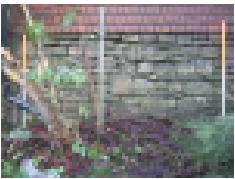
Frame_004.jpg



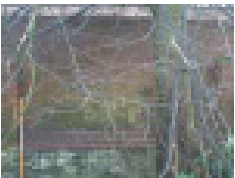
Frame_009.jpg



Frame_014.jpg



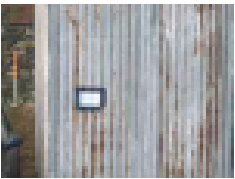
Frame_019.jpg



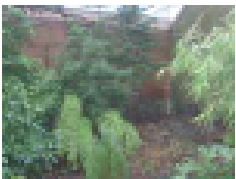
Frame_024.jpg



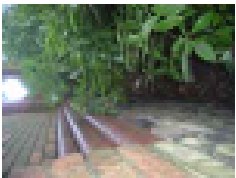
Frame_029.jpg



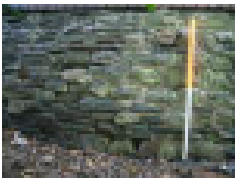
Frame_034.jpg



Frame_003.jpg



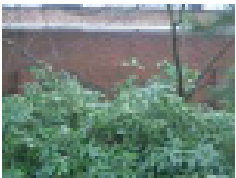
Frame_008.jpg



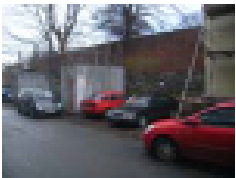
Frame_013.jpg



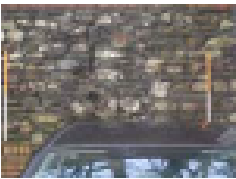
Frame_018.jpg



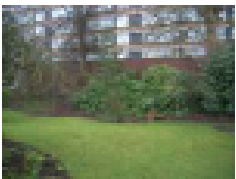
Frame_023.jpg



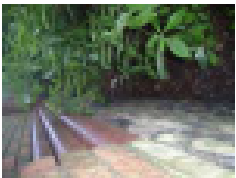
Frame_028.jpg



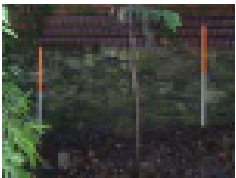
Frame_033.jpg



Frame_002.jpg



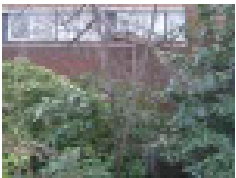
Frame_007.jpg



Frame_012.jpg



Frame_017.jpg



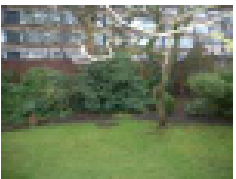
Frame_022.jpg



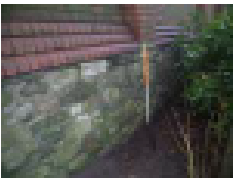
Frame_027.jpg



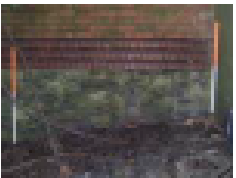
Frame_032.jpg



Frame_001.jpg



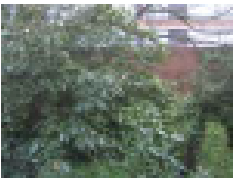
Frame_006.jpg



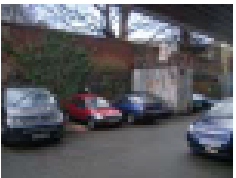
Frame_011.jpg



Frame_016.jpg



Frame_021.jpg



Frame_026.jpg



Frame_031.jpg

Fig.2 Photographic register

BRSMG2009/20



Frame_040.jpg



Frame_039.jpg



Frame_038.jpg



Frame_037.jpg



Frame_036.jpg



Frame_045.jpg



Frame_044.jpg



Frame_043.jpg



Frame_042.jpg



Frame_041.jpg



Frame_050.jpg



Frame_049.jpg



Frame_048.jpg



Frame_047.jpg



Frame_046.jpg



Frame_051.jpg