

**Report on Trenched Archaeological Evaluation at
'Plot adjacent to Providence House, Church Street, Fressingfield,
Suffolk, FRS 100'**

Project	Trenched Archaeological Evaluation at 'Plot adjacent to Providence House, Church Street, Fressingfield, Suffolk, FRS 100'
Grid reference	TM 2617 7745
Planning Authority	Mid Suffolk District Council
Planning reference	2781/15
HER parish code	FRS 100
OASIS reference	chrisbir1-340098
Title	Report on Trenched Archaeological Evaluation at 'Plot adjacent to Providence House, Church Street, Fressingfield, Suffolk, FRS 100'
Author(s)	Chris Birks, chris@chrisbirksarchaeology.co.uk , 01603-737804/07963-969623
Derivation	Initial draft CB564R v.1.0
Reviser(s)	Chris Birks
Date of revision	24 January 2019
Sequence	Report CB564R v.1.0 Fressingfield, Report CB564R v.1.1 Fressingfield
Version	1.1
Status	Approved final copy
Summary of Changes	Amendment of Fig.1, confirmation of approval
Sections revised	1.3
Circulation	SCCAS/CT, Client
Required Action	n/a
File Name/Location	C:\Users\Chris\Desktop\Chris Business\Year 15 Apr2018 to Apr2019\Finished Projects\Fressingfield\Report CB564R v.1.1 Fressingfield.docx
Approval	Approved
Comments	Interim report submitted to and approved by Rachael Abraham, Senior Archaeological Officer SCCAS subject to minor amendment

SCCAS/CT Suffolk County Council Archaeological Service/Conservation Team

Disclaimer

This document has been prepared for the titled project or named part thereof and should not be relied upon or used for any other project without an independent check being carried out as to its suitability and prior written authority of Chris Birks being obtained. Chris Birks accepts no responsibility or liability for the consequences of this document being used for a purpose other than the purposes for which it was commissioned. Any person/party using or relying on the document for such other purposes agrees and will by such use or reliance be taken to confirm their agreement to indemnify Chris Birks for all loss or damage resulting therefrom. Chris Birks accepts no responsibility or liability for this document to any party other than the person/party by whom it was commissioned.

Chris Birks

4 Well Green Row
Frettenham
Norfolk
NR12 7GL

t: 01603 737804
m: 07963 969623
e: chris.birks@chrisbirksarchaeology.co.uk
w: www.chrisbirksarchaeology.co.uk

Archaeology Report

CB564R v.1.1

**Land adjacent to Providence House,
Church Street, Fressingfield, Suffolk,
FRS 100**

Prepared for:

Mr Peter Holland
13 Church Field
Norwich
Norfolk
NR4 6UP

Contents

<i>Section</i>	<i>Page</i>
<i>Summary</i>	<i>1</i>
1.0 Introduction	1, 2
2.0 Project Background	2
3.0 Geology and Topography	2
4.0 Archaeological and Historical Background	2
5.0 Results	2 - 4
5.1 Introduction	
5.2 Observations	
6.0 Conclusions	4

Acknowledgements

Bibliography

Appendix 1 Written Scheme of Investigation

Appendix 2 Context Summary

Appendix 3 OASIS Record

Figure 1. Site location plan

Figure 2. Site plan

Figure 3 Site drawings

Plate 1. Pit [103], looking southeast

Plate 2. Southwest end of the trench and pit [103], looking southeast

Plate 3. Features [105] (bottom) and [107], looking northeast

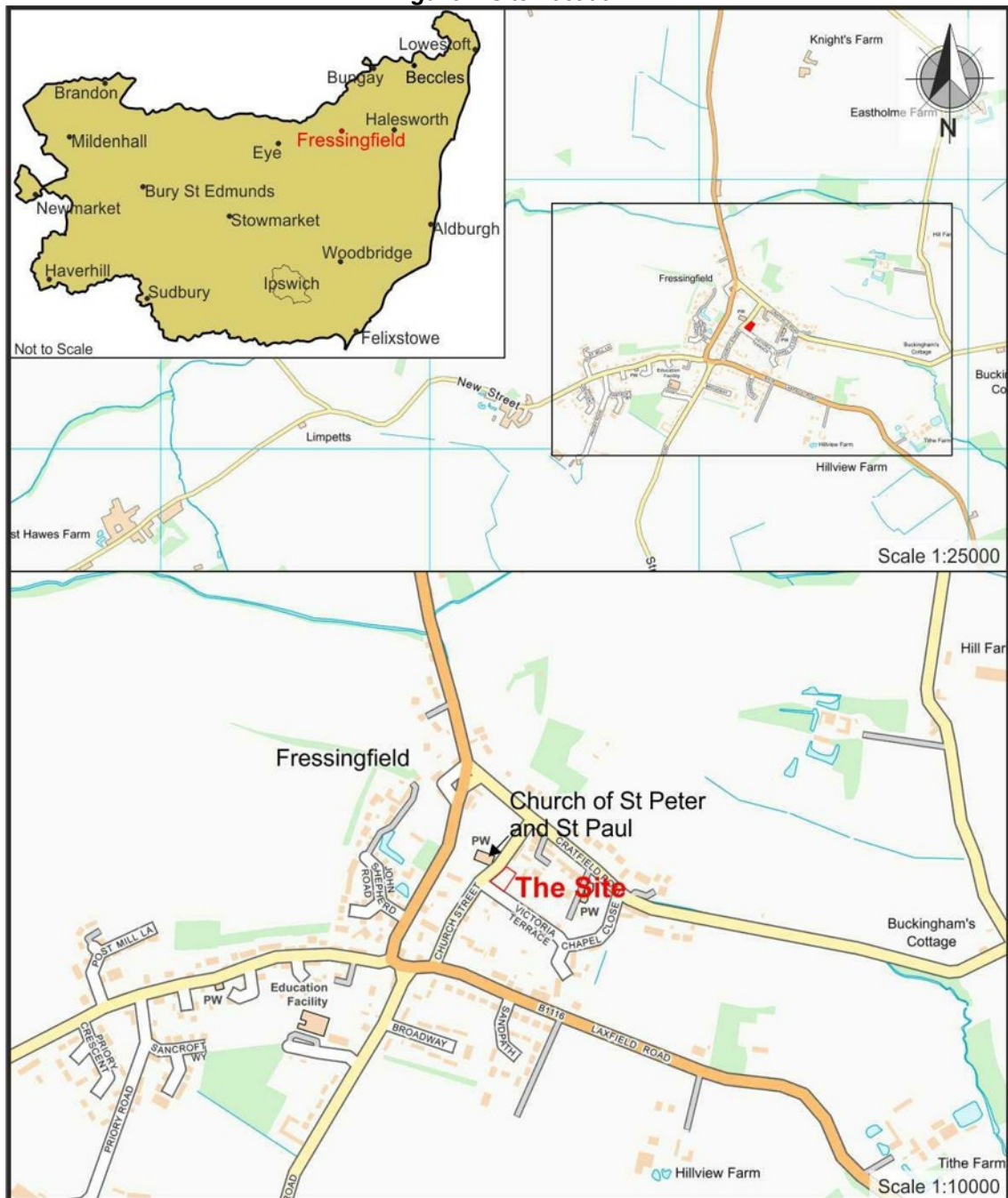
Summary

A programme of trenched archaeological evaluation was carried out at 'Plot adjacent to Providence House, Church Street, Fressingfield, Suffolk, FRS 100' as a planning condition associated with the construction of a new dwelling. Despite the potential for archaeological remains, none were present.

1.0 Introduction

1.1 A Trenched Archaeological Evaluation resulting from development proposals at 'Plot adjacent to Providence House, Church Street, Fressingfield, Suffolk, FRS 100' (grid reference TM 2617 7745, centred at, *Fig. 1*) has been requested by the Conservation Team of Suffolk County Council's Archaeological Service (Rachael Abraham 03 May 2017), Mid Suffolk District Council planning reference number 2781/15.

Figure 1 Site Location



1.2 Written Scheme of Investigation, CB564, v.1.1 (*Appendix 1*) details how Chris Birks (hereafter 'the Contractor') would undertake these works and was prepared for Mr Peter Holland (hereafter

'the Client'), submitted to and approved by the Conservation Team of Suffolk County Council's Archaeological Service for consideration in accordance with *Standard and guidance for commissioning work or providing consultancy advice on archaeology and the historic environment* by the Chartered Institute for Archaeologists (2014).

- 1.3 Interim Report CB564R v.1.0 summarises the results and a copy was submitted to and approved by the Conservation Team of Suffolk County Council's Archaeological Service subject to minor amendment prior to preparation of this final copy, CB564R v.1.1.

2.0 Project Background

- 2.1 The proposed development site lies within a wider area of known heritage assets and comprises a relatively large area with potential for heritage assets with archaeological interest (buried archaeological remains) to be present and that the significance of these may be affected by the proposed development.

- 2.2 A Trenched Archaeological Evaluation was required to determine the presence/absence, date, extent, state of preservation and significance of any archaeological layers or subsoil archaeological features. The results of the evaluation aided decisions regarding a mitigation strategy – no further works were required.

- 2.3 The Planning Authority were advised that any consent should be conditional upon an agreed programme of work taking place before development begins in accordance with *National Planning Policy Framework para 141 (2012)* and *Standard and guidance for commissioning work or providing consultancy advice on archaeology and the historic environment* by the Chartered Institute for Archaeologists (2014) to record and advance the understanding of the significance of any heritage assets (that might be present at this location) before they are damaged or destroyed.

- 2.4 Suffolk HER parish code FRS 100 and Online Access to the Index of Archaeological Investigations (OASIS) id chrisbir1-340098 apply.

3.0 Geology and Topography

- 3.1 The geology of Great Britain is recorded by the British Geological Survey and published on their website (<http://www.bgs.ac.uk>). The site lies upon a solid geology of the Norwich Crag Formation – Sand. Sedimentary Bedrock formed approximately 0 to 3 million years ago in the Quaternary Period. Local environment previously dominated by shallow seas. Superficial deposits comprise those of the Lowestoft Formation, formed up to 2 million years ago in the Quaternary Period. Local environment previously dominated by ice age conditions. The Lowestoft Formation forms an extensive sheet of chalky till, together with outwash sands and gravels, silts and clays. The till is characterised by its chalk and flint content. The carbonate content of the till matrix is about 30%, and tills within the underlying Happisburgh Formation have less than 20%.

- 3.2 The development site comprises an area of approximately 670m² centred at TM 2617 7745 (*Fig. 2*) towards the east side of the centre of Fressingham. The site lies within an area of residential development to the east of the parish church. The site slopes gently downward from south to north at c. 40m OD and the surrounding land falls more sharply downwards towards the north.

4.0 Archaeological & Historical Background

- 4.1 The development site lies within the historic settlement core of Fressingfield and to the east of the medieval church of St Peter and St Paul (FSF 023).

5.0 Results

Figures 2 and 3

5.1 Introduction

- 5.1.1 Archaeological excavations were carried out on 02 June 2017. Site conditions were good and access was gained from Victoria Terrace to the south of the site. The weather remained dry and overcast with sunny spells.

5.1.2 Context numbers were allocated during fieldwork and a summary is provided in *Appendix 2*.

5.2 Observations

Context No.	Type	Description	Thickness	Finds	Spot date
100	D	Dark grey silty sand topsoil with moderate small- to medium-sized chalk pieces and occasional small-sized subangular flints	c. 0.35 – 0.50m	No	-
101	D	Light to mid grey silty sand subsoil with occasional small-sized chalk pieces and occasional small-sized subangular flints	c. 0.15m	No	-
102	D	Very compact light yellow clay undisturbed 'natural' deposits with rare small-sized subangular flints	-	No	-
103	C	Pit	-	-	-
104	D	Very dark grey silty sand fill of [103] with occasional small- to medium-sized CBM fragments, moderate small- to medium-sized chalk pieces and occasional small-sized subangular flints	>0.50m	Pottery, brick	Modern
105	C	Pit	-	-	-
106	D	Very dark grey silty sand fill of [105] with occasional small- to medium-sized CBM fragments, moderate small- to medium-sized chalk pieces and occasional small-sized subangular flints	c. 0.15m	Pottery, brick	Modern
107	C	Pit	-	-	-
108	D	Mid grey silty sand fill of [107] with moderate small- to medium-sized chalk pieces and occasional small-sized subangular flints	c. 0.20m	Pottery	Modern

5.2.1 The trench measured 15m by 1.8m and excavations started at the southwest end to a depth of c. 1.05m and to c. 0.5m at the northeast end. The deeper excavations at the southwest end were due to the presence of a very large (beyond southwest, west and east edges of excavation) modern pit [103] that extended into undisturbed 'natural' deposits (102) (*Plates 1 and 2*). Pottery sherds of 19th/20th century or later date and brick fragments were present within fill (104) of this pit. To the northeast of pit [103], excavations removed c. 0.35m of topsoil (100) and c. 0.15m of subsoil (101) above undisturbed 'natural' deposits (102). Two features [105] and [107] were present; [105] had a very dark grey fill (106) similar to fill (104) of pit [103] and [107] had a lighter grey fill (108) and both contained the same types of 19th/20th century pottery (*Plate 3*). A large piece of brick was present in the base of [105]. No archaeological remains were present.

Plate 1. Pit [103], looking southeast



Scale is 1m in 0.5m intervals

Plate 2. Southwest end of the trench and pit [103], looking southeast



Scale is 1m in 0.5m intervals

Plate 3. Features [105] (bottom) and [107], looking northeast



Scale is 1m in 0.5m intervals

6.0 Conclusions

- 6.1 The author has a high confidence rating of the results.
- 6.2 Despite potential for early occupation deposits to survive on this site, no archaeological remains were present. No further archaeological works were requested by the Suffolk County Council Archaeological Service in association with Mid Suffolk District Council.

Acknowledgments

The project was undertaken by Chris Birks on behalf of Mr Peter Holland who also funded the work. Plant was provided and operated by Tim Ollett. Many thanks also to Nicholas Bailey.

Fieldwork was undertaken by Chris Birks the report was written by Chris Birks.

Many thanks to Rachael Abraham at the Suffolk County Council Archaeological Service and to Grace Campbell at the Suffolk Historic Environment Record office.

Bibliography

- Birks, C., 2017 *Written Scheme of Investigation for Trenched Archaeological Evaluation at 'Plot adjacent to Providence House, Church Street, Fressingfield, Suffolk*. Chris Birks unpublished Document WSI CB564 v.1.1
- Gurney, D., 2003 *Standards for Field Archaeology in the East Of England* (East Anglian Archaeology Occasional Papers 14
- Medlycott, M., 2011 *Research and Archaeology Revisited: A Revised Framework For the East of England*). East Anglian Archaeology Occasional Paper 24
- MoRPHE 2015 *Management of Research Projects in the Historic Environment. The MoRPHE Project Manager's Guide* (Historic England)
- SCAUM 1997 *Health and Safety at Work Act 1974, The Management of Health and Safety Regulations 1992 and Health and Safety in Field Archaeology*

Appendix 1 Written Scheme of Investigation

**Trenched Archaeological
Evaluation**
at
**'Plot adjacent to Providence
House, Church Street,
Fressingfield, Suffolk'**

Title	Trenched Archaeological Evaluation at 'Plot adjacent to Providence House, Church Street, Fressingfield, Suffolk'
Author(s)	Chris Birks, chris@chrisbirksarchaeology.co.uk, 01603-737804/07963-969623
Derivation	Initial draft CB564 v.1.0
Grid reference	TM 2617 7745
Planning Authority	Mid Suffolk District Council
Planning reference	2781/15
Origination Date	30 August 2017
Reviser(s)	Chris Birks
Date of revision	03 September 2017
Sequence	WSI CB564 v.1.0 Fressingfield, WSI CB564 v.1.1 Fressingfield
Version	1.1
Status	Approved copy
Summary of Changes	Confirmation of approval by SCCAS/CT, addition of Health & Safety Policy and Risk Assessments
Sections revised	1.2, 8.2.1, addition of <i>Appendix 1</i>
Circulation	SCCAS/CT
Required Action	None
File Name/Location	C:\Users\Chris\Desktop\Chris Business\Year 14 Apr2017 to Apr2018\Projects at enquiry\Fressingfield\WSI CB564 v.1.1 Fressingfield.docx
Approval	Approved
Comments	Draft copy submitted to and approved by Rachael Abraham, Senior Archaeological Officer SCCAS on 01 September 2017. Final copy prepared and sent to Rachael Abraham and Mid Suffolk District Council on 03 September 2017

SCCAS/CT Suffolk County Council Archaeological Service/Conservation Team



**Written Scheme of Investigation for
Trenched Archaeological Evaluation at
'Land adjacent to Providence House, Church Street,
Fressingfield, Suffolk'**

Prepared for:

Mr Peter Holland

Reference No. CB564 v.1.1
© Chris Birks September 2017

All rights reserved

Contents

<i>Section</i>	<i>Page</i>
1.0 Introduction	1
2.0 Project Background	1, 2
3.0 Archaeological & Historical Background	2
4.0 Aims and Objectives	2
5.0 Method Statement	2 - 7
5.1 Introduction	
5.2 Trenched Archaeological Evaluation	
5.3 Post-excavation Analysis & Report	
6.0 Timetable & Resources	7
6.1 Work Programme	
6.2 Works & Cost Implications	
7.0 Staffing	7, 8
8.0 Additional Information	8 - 10
8.1 Planning Conditions	
8.2 General Conditions	
8.3 Quality Standards	
8.4 Health & Safety	
8.5 Insurance	

Bibliography

Appendix 1 Health and Safety Policy Statement and Risk Assessments

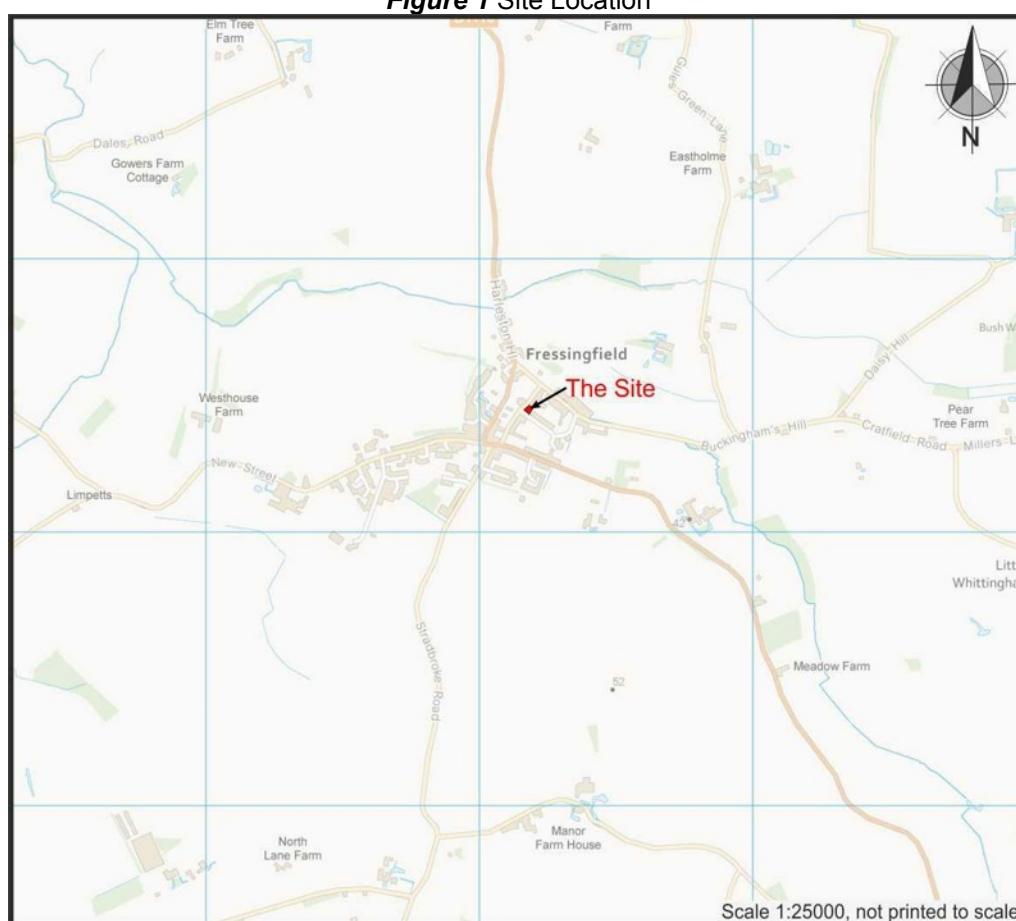
Figure 1. Site location

Figure 2. Site plan

1.0 Introduction

- 1.1 A Trenched Archaeological Evaluation resulting from development proposals at 'Land adjacent to Providence House, Church Street, Fressingfield, Suffolk' (grid reference TM 2617 7745, centred at, *Fig. 1*) has been requested by the Conservation Team of Suffolk County Council's Archaeological Service (Rachael Abraham 03 May 2017), Mid Suffolk District Council planning reference number 2781/15.
- 1.2 Written Scheme of Investigation, CB564, v.1.0 details how Chris Birks (hereafter 'the Contractor') would undertake these works and was prepared for Mr Peter Holland (hereafter 'the Client'). A copy was submitted to the Conservation Team of Suffolk County Council's Archaeological Service for consideration in accordance with *Standard and guidance for commissioning work or providing consultancy advice on archaeology and the historic environment* by the Chartered Institute for Archaeologists (2014). Approval was received on 01 September 2017 prior to preparation of this final copy, CB564, v.1.1.

Figure 1 Site Location



2.0 Project Background

- 2.1 The proposed development site lies within a wider area of known heritage assets and comprises a relatively large area with potential for heritage assets with archaeological interest (buried archaeological remains) to be present and that the significance of these may be affected by the proposed development.
- 2.2 A Trenched Archaeological Evaluation is required to determine the presence/absence, date, extent, state of preservation and significance of any archaeological layers or subsoil archaeological features. The results of the evaluation will aid decisions regarding a mitigation strategy that may include a further phase of Archaeological Evaluation, Archaeological Excavation or Continuous

Archaeological Recording (Archaeological Monitoring) during the development if features of importance are found and these cannot be preserved *in-situ*.

- 2.3 The Planning Authority were advised that any consent should be conditional upon an agreed programme of work taking place before development begins in accordance with *National Planning Policy Framework para 141 (2012)* and *Standard and guidance for commissioning work or providing consultancy advice on archaeology and the historic environment* by the Chartered Institute for Archaeologists (2014) to record and advance the understanding of the significance of any heritage assets (that might be present at this location) before they are damaged or destroyed.

3.0 Archaeological & Historical Background

- 3.1 The proposed development site lies within an area of archaeological potential indicated by the County Historic Environment Record, within the historic settlement core and to the east of the medieval church (FSF 023). As a result there is high potential for early occupation deposits to be disturbed by development. Any ground-works associated with the proposed development have the potential to cause significant damage or destruction to any underlying heritage assets.

4.0 Aims and Objectives

- 4.1 Specific aims of the project are;
 - 4.1.1 To establish the states of preservation of archaeological features and/or deposits, assess their potential for analysis, undertake an agreed programme of analysis, produce an archive and report and disseminate the results by means of an appropriate form of publication (usually a Contractor's Report, Journal Note or Article, or Monograph). This forms part of the research agenda for the eastern counties of England in *Research and Archaeology Revisited: A Revised Framework for the East of England* (Medlycott 2011).
- 4.2 Provide supporting information of activities on site through environmental sampling of suitable deposits which may also contribute to regional environmental archaeology research aims.
- 4.3 Generic Aims of the project are to;
 - 4.3.1 Establish the extent, condition, nature, date, phasing, character, function, status and significance of any archaeological remains.
 - 4.3.2 Create datasets relating to the stratigraphic, artefactual and environmental information recovered during excavations for analysis.
 - 4.3.3 Evaluate the likely impact of past land uses and the possible presence of masking colluvial/alluvial deposits.
 - 4.3.4 Prepare a report commensurate with the findings.
 - 4.3.5 Provide sufficient information to construct an archaeological conservation strategy, dealing with preservation, the recording of archaeological deposits, working practices, timetables and orders of cost.

5.0 Method Statement

- 5.1 **Introduction**
 - 5.1.1 The primary purpose of the evaluation is to excavate archaeological trenches within the proposed development area in order to recover as much information as possible on the extent, date, phasing, character, function, status and significance of the site. The states of preservation of archaeological features or deposits within the area indicated will be determined. This will be achieved through the following methodology and in accordance with *Requirements for Trenched Archaeological Evaluation* (Suffolk County Council Archaeological Service 2017).
- 5.2 **Trenched Archaeological Evaluation**
 - 5.2.1 An OASIS online record will be initiated and key fields completed on Details, Location and Creators forms prior to fieldwork commencing.

- 5.2.2 The Suffolk Historic Environment Record (HER) Officer will be contacted in advance of work starting to obtain a HER event number and site code and for the site and to commission a search of HER records.
- 5.2.3 Consultation of a service plan/s (to be provided by the Client) and CAT-scan of the area will be carried out prior to any excavations. Any service runs will be clearly marked on site using spray line marker, and avoided during excavations. If avoidance is not possible, the relevant trench may need repositioning or the service run will need to be moved at the expense of the Client.
- 5.2.4 A tracked hydraulic-type/wheeled excavator with qualified driver and toothless ditching bucket will be required for the mechanical excavation of modern overburden deposits.
- 5.2.5 A linear trenched evaluation is required of the development area to enable the archaeological resource, both in quality and extent, to be accurately quantified.
- 5.2.6 One (1) trench measuring 15m by 1.8m will be excavated within the footprint of the proposed new dwelling (*Fig. 2*). Precise trench location will be established on site and in consultation with the Suffolk County Council Archaeological Service.
- 5.2.7 In the unlikely event that deposits extend beyond 1.2m beneath present ground level (less in the presence of loose or unstable deposits) the trench edges will be stepped prior to any further excavation beyond this depth in agreement with the Conservation Team of Suffolk County Council's Archaeological Service.
- 5.2.8 Should the water table be encountered it may be necessary to employ the use of a suitable pump and provisions for the storage/removal of this water will need to be made at additional cost. Environmental considerations may require the use of a settlement tank/s should water be pumped to a water course and these decisions will need to be made in association with the relevant authority.
- 5.2.9 The trenches will characterise the full archaeological sequence down to undisturbed 'natural' deposits unless otherwise agreed with the Conservation Team of Suffolk County Council's Archaeological Service.
- 5.2.10 Topsoil and subsoil deposits will be removed in spits of no more than 0.1m under constant archaeological supervision and direction until archaeological remains or undisturbed 'natural' deposits are encountered.
- 5.2.11 Topsoil, subsoil, archaeological features & deposits and spoil will be metal detected during machine (including each spit of topsoil) and manual excavation and finds will be recovered, labelled and bagged, and retained for later analysis by relevant specialists.
- 5.2.12 Spoil arisings will be stored at a safe distance of c. 1m from the trench. If they are to be removed from site, this will remain the responsibility of the Client who should note that all deposits must be metal detected prior to removal.
- 5.2.13 Should archaeological remains be encountered, no further machine excavation will be made and archaeological features will be sample excavated by hand, using appropriate tools, as follows;
- | | |
|--------------------|--|
| Linear features | 10% (minimum 1m wide slot across the width) |
| Pits, post-holes | 50% (with provision for up to 100% excavation) |
| Structural remains | 50% (depending upon the extent of remains) |
| Burials | See 5.2.14 to 5.2.17 |
- 5.2.14 If burials are encountered, their location (including depth) will be recorded and the Conservation Team of Suffolk County Council's Archaeological Service and the Ministry of Justice (MoJ) will be informed immediately. They will remain undisturbed *in situ* and be covered with a suitable geotextile membrane prior to backfilling of the trench. No further excavations associated with the development may continue at these locations until decisions regarding their treatment have been made by the Conservation Team of Suffolk County Council's Archaeological Service and the MoJ and would be subject to a further programme of archaeological work and additional cost.

- 5.2.15 If there is a reason, to be determined by the Conservation Team of Suffolk County Council's Archaeological Service, for human remains to be removed during the current programme of archaeological work, human skeletal remains within the confines of the excavations will be archaeologically excavated and recorded and the remains will be removed for subsequent reburial or deposition with the Suffolk Museums Service archive under licence from the Ministry of Justice, to be applied for in the event of encountering human burials, and in accordance with *Guidance for Best Practice for Treatment of Human Remains Excavated From Christian Burial Grounds in England* (Historic England 2005). Subject to agreement with the Conservation Team of Suffolk County Council's Archaeological Service, there may be a need to extend the sides of excavated areas to ensure that complete burials can be excavated. Contingency sums are provided.
- 5.2.16 If some or all of the human remains are in sealed coffins or in a crypt, or to include preserved soft tissue, or be less than 100 years old, the relevant Environmental Health Officer for the district will be informed. In any of these events, the Conservation Team of Suffolk County Council's Archaeological Service will consider the appropriate treatment of such remains which would incur additional costs, to be established as the need arises.
- 5.2.17 Analysis of any human skeletal remains removed during the excavations will be carried out by a relevant specialist to an appropriate level depending on the number, date and surviving condition of the burials. Analysis of the human bone will include a complete demographic, skeletal and dental pathology profile as per Brickley & McKinley (2004). Provision for specific soil samples, dating and other scientific bone analysis will be made according to Campbell *et al* (2011) and in agreement with the Conservation Team of Suffolk County Council's Archaeological Service and the Science Advisor, East of England Heritage Protection Department, Historic England, as required.
- 5.2.18 Archaeological features and deposits will be recorded on Chris Birks *pro-forma* context sheets. Section and plan drawings will be recorded at an appropriate scale (1:50;1:20;1:10) depending upon the level of detail required.
- 5.2.19 A photographic record of archaeological remains will be made using colour digital images and 35mm black & white transparencies. A general photographic record will be made using colour digital images.
- 5.2.20 Appropriate registers for contexts, drawings, photographs and environmental samples will be made.
- 5.2.21 All finds of archaeological significance will be collected, bagged and labelled for processing, cataloguing and subsequent analysis by relevant finds specialists.
- 5.2.22 Forty litre bulk samples, or the full context if this is less, will be taken from well-sealed and dated contexts for environmental analysis. Sampling and analysis of suitable archaeological features/deposits for palaeoenvironmental remains and scientific dating of deposits, artefacts or ecofacts will be carried out in accordance with *Environmental Archaeology. A Guide to the Theory and Practice of Methods, from Sampling and Recovery to Post-excavation* (Campbell *et al* 2011) and Murphy and Wiltshire (1994). Environmental sampling will be discussed with the Conservation Team of Suffolk County Council's Archaeological Service and in consultation with the Science Advisor, East of England Heritage Protection Department, Historic England, as required.
- 5.2.23 A single-context planning methodology will be employed and a matrix of the sequence of deposits will be made on-site as necessary.
- 5.2.24 The Conservation Team of Suffolk County Council's Archaeological Service will be monitoring the project during fieldwork and providing advice accordingly.
- 5.2.25 Temporary fencing and appropriate signage will be displayed.
- 5.2.26 The trenches will be backfilled without compaction or reinstatement once the Conservation Team of Suffolk County Council's Archaeological Service has approved fieldwork as complete. If compaction or reinstatement is required by the Client, this will be subject to additional costs, to be

arranged. They may remain open at the request of the Client who will then assume responsibility for safety implications.

5.2.27 Time (as agreed in consultation with the Client and the Conservation Team of Suffolk County Council's Archaeological Service) will be required to carry out this work and the Client is expected to acknowledge this, and that further excavation or other incursion upon the site is not carried out until completion of the archaeological works. Fieldwork will only be considered to be complete with confirmation by the Conservation Team of Suffolk County Council's Archaeological Service. Should an extreme quantity or exceptional archaeological remains be encountered during excavations, these shall be reported immediately to the Conservation Team of Suffolk County Council's Archaeological Service. No responsibilities to delays in the Client's work programme as a result of this will be accepted by the Contractor.

5.3 Post-excavation Analysis and Report

5.3.1 Artefactual remains recovered during excavations will be cleaned, catalogued and analysed by relevant finds specialists following fieldwork, in accordance with *Standard and guidance for the collection, documentation, conservation and research of archaeological materials* (Chartered Institute of Field Archaeologists 2014). In the first instance, this will be carried out by Chris Birks. Any further analysis will be carried out by relevant finds specialists as appropriate.

5.3.2 An assessment of the recorded evidence will be made in accordance with *Management of research projects in the historic environment. The MoRPHE Project Manager's Guide* (Historic England 2015).

5.3.3 The analysis of stratigraphical/structural records, Artefactual and environmental materials will be made for inclusion in a site report.

5.3.4 The site report will include the following according to *Standard and guidance for archaeological field evaluation* (Chartered Institute of Field Archaeologists 2014);

5.3.4.1 a non-technical summary will explain the principal reason for the work, its objectives and main results. It will include reference to authorship and the commissioning body.

5.3.4.2 project, planning, geological, archaeological and historical backgrounds.

5.3.4.3 aims and objectives, as described in the Written Scheme of Investigation.

5.3.4.4 methodology, as described in the Written Scheme of Investigation.

5.3.4.5 results. These will include a series of summary objective statements, organised clearly in relation to the methods used, and describing contextual data and associated finds and/or environmental data. Descriptive material will be clearly separated from interpretative statements. Technical terminology (including dating or period references) will be explained and the results will be accompanied by appropriate drawings and photographs and by supporting data contained in appendices.

5.3.4.6 finds, human remains, environmental and other relevant specialists' report as required.

5.3.4.7 conclusions. Conclusions will be drawn to summarise and interpret the results and place them into context (local, national or otherwise). A confidence rating on techniques used, or on limitations imposed by particular factors (e.g. weather or problems of access) will be included. A confidence rating on techniques used, or on limitations imposed by particular factors (e.g. weather or problems of access) will be included. An opinion as to the necessity for further archaeological intervention and its scope may be provided in the report, although the final decision lies with the Conservation Team of Suffolk County Council's Archaeological Service.

5.3.4.8 archive. The archive will be prepared consistent with the principles of *Management of research projects in the historic environment. The MoRPHE Project Manager's Guide* (Historic England 2015) and *Archaeological Archives in Suffolk, Guidelines for preparation and deposition* (SCCAS Conservation Team 2017) and submitted to the Suffolk County Council's Archaeological Service for long-term storage.

- 5.3.4.9 appendices, to include context, finds and environmental sample summaries.
- 5.3.4.10 illustrations. Figures will be prepared at appropriate scales to include site location and plan drawings and plan and section drawings, relating their locations. Figures and/or plates may also be included to locate HER entries, historic maps and aerial photographs to the proposed development site. Colour digital images of archaeological remains described in the results will be provided as necessary including title, orientation and scale information.
- 5.3.4.11 references and bibliography. A list of all sources referred to in the report, including electronic sources, will be provided.
- 5.3.4.12 a document control grid to track revisions to the report and a list of contents with descriptions of figures and plates will be included in the report and disclaimers will be described.
- 5.3.5 An assessment report and updated project design, as outlined in *Management of research projects in the historic environment. The MoRPHE Project Manager's Guide* (Historic England 2015) will be provided to the Conservation Team of Suffolk County Council's Archaeological Service and Historic England within six months of completion of fieldwork as required.
- 5.3.6 A *draft* copy of the report will be submitted for consideration by the Conservation Team of Suffolk County Council's Archaeological Service. Any required amendments will be considered and made prior to submission of a *final* report. The *draft* copy will only be provided to the Client as proof of production on request and must not be distributed elsewhere.
- 5.3.7 One bound paper copy plus a digital copy of the *final* Contractor's (site) report will be submitted to the Suffolk Historic Environment Service; one copy to the Client and one copy to Historic England as required. These copies will not be issued until all payments have been received in full.
- 5.3.8 Where positive results are drawn, a summary report will be prepared for the *Proceedings of the Suffolk Institute of Archaeology and History*.
- 5.3.9 Any further works required by the Conservation Team of Suffolk County Council's Archaeological Service in the event that remains of importance are found that cannot be preserved *in-situ* are not included in the present scope of works for trenched archaeological evaluation. This may involve excavation and recording of an area to be specified by the Conservation Team of Suffolk County Council's Archaeological Service. A brief would be provided by the Conservation Team of Suffolk County Council's Archaeological Service and a Written Scheme of Investigation would be required from an archaeological contractor.
- 5.3.10 In the event of significant archaeological remains being encountered, a publication report (Journal Note, Article or Monograph) will be prepared for inclusion in a recognised archaeological publication (e.g. *Proceedings of the Suffolk Institute of Archaeology and History, East Anglian Archaeology, Proceedings of the Prehistoric Society*). A *draft* copy of the publication report will be provided to the Conservation Team of Suffolk County Council's Archaeological Service for comment within eighteen months of completion of the fieldwork as required.
- 5.3.11 The OASIS online form will be completed and submitted to the Conservation Team of Suffolk County Council's Archaeological Service, including an uploaded .pdf version of the report. A digital copy of the report will be submitted for inclusion on the Archaeology Data Service database (<http://ads.ahds.ac.uk/catalogue/library/greylit>) upon completion of the project.
- 5.3.12 It is expected that the landowner will deposit the full site archive, and transfer title to, the Archaeological Service or the designated Suffolk museum, and this should be agreed before the fieldwork commences. The intended archive depository will be consulted before the archive is prepared regarding the specific requirements for the archive deposition and curation (including the digital archive), and regarding any specific cost implications of deposition.
- 5.3.13 Excepting those covered by the Treasure Act of 1996, all archaeological materials will remain the property of the landowner/s. A formal agreement may be sought regarding any items of local, regional or national significance for donation of finds to an appropriate Museums Service. Any

treasure will be reported immediately to the Suffolk Finds Liaison Officer who will inform the coroner within 14 days.

6.0 Timetable and Resources

6.1 Work Programme

6.1.1 A work programme is yet to be finalised between the Client and the Contractor in association with the main contractor. Works are likely to begin in 2017. Depending on the quantity and nature of archaeological remains, fieldwork is likely to take up to 10 person days.

6.1.2 The production of the *draft* site and publication reports will depend, in part, upon the completion of any finds and/or environmental analysis and reporting. The *draft* report will be completed within as short a timescale as possible following completion of the programme of archaeological fieldwork. The *draft* report is submitted only to the Conservation Team of Suffolk County Council's Archaeological Service for consideration and the time taken for the Conservation Team of Suffolk County Council's Archaeological Service to respond cannot be stated. The *final* report is prepared and distributed only when approval of the *draft* report and all outstanding payments have been received. The Contractor is not responsible for any delays to the developer's work programme.

6.2 Works and Cost Implications

6.2.1 Any additional works as instructed by the Conservation Team of Suffolk County Council's Archaeological Service or the Client are not included in costs or timetable. All that are outside those listed in this document will be considered as variations to the scope of archaeological works and will be subject to additional charges and timescale, to be agreed with the Client.

6.2.2 An amount will be included when preparing costs regarding the preparation, assessment, analysis and reporting of plant macrofossils and charcoal; beetles; vertebrates; scientific dating and treatment of Human Remains/Burials. Contingency costs for scientific techniques & methods are included and will only be made in agreement with the Conservation Team of Suffolk County Council's Archaeological Service and Historic England as required.

6.2.3 Details of the client including responsibility for payment of invoices must be provided through completion of the *Contract* to be sent to the contractor prior to acceptance of appointment to the project.

7.0 Staffing

7.1 Project Team

7.1.1 The project will be managed and co-ordinated by Chris Birks who will accept responsibilities for finance, standards, health and safety issues and liaison with the Client, the Conservation Team of Suffolk County Council's Archaeological Service, finds specialists and curators. Chris Birks is a member of the CIFA at *MCIFA* level (membership number 4762), the Council for British Archaeology, the Prehistoric Society and CITB registered. A full resume can be provided upon request.

7.1.2 An experienced metal detectorist will be dedicated to the project during all fieldwork stages. Suitably qualified and experienced field staff, with experience of rural archaeology in particular, will be employed if necessary.

7.1.3 Finds processing and cataloguing will be carried out by Chris Birks, or by an equally qualified person.

7.1.4 Initial finds analysis and reporting will be carried out by Chris Birks. If further detailed analysis is required upon the request of the Conservation Team of Suffolk County Council's Archaeological Service, this may be undertaken by external finds specialists.

Specialists include;

Sue Anderson *BA, MPhil*
Sarah Bates

Medieval/Post-medieval Pottery, Human remains
Lithics

Francesca Boghi MSc	Human remains
Julie Curl	Macro faunal remains
Richenda Goffin	Ceramics
Fran Green, BSc, PhD	Palynology
Alice Lyons BA MA MIFA	Roman Pottery
Dr Adrian Marsden BSc, PhD	Numismatic finds
Norfolk Museums Service	Conservation & X-ray
Simon Parfitt BSc, PhD (current)	Vertebrates/small mammals
Dr David Smith MA (Cambridge), MA, PhD (Sheffield), FRES	Insect remains
Dr John Summers (AS)	Plant macrofossils, charcoal
Gary Taylor/Jane Cowgill (APS)	Metallurgy
AS – Archaeological Solutions	
APS – Archaeological Project Services	

- 7.1.5 Finds will be appropriately conserved and stored in accordance with guidelines from *The Institute of Conservation* (ICON).

8.0 Additional Information

8.1 Planning Conditions

- 8.1.1 The reason for the archaeological planning conditions 8. and 9. of the approved planning permission is that the site is potentially of archaeological and historical significance and to safeguard archaeological assets within the approved development boundary from impacts relating to any groundworks associated with the development scheme and to ensure the proper and timely investigation, recording, reporting and presentation of archaeological assets affected by this development, in accordance with the National Planning Policy Framework (2012).

8. ACTION REQUIRED PRIOR TO THE COMMENCEMENT OF DEVELOPMENT - ARCHAEOLOGICAL WORKS

No development shall take place within the application site until the implementation of a programme of archaeological work has been secured, in accordance with a Written Scheme of Investigation which has been submitted to and approved in writing by the Local Planning Authority. The scheme of investigation shall include an assessment of significance and research questions; and:

- The programme and methodology of site investigation and recording.
- The programme for post investigation assessment.
- Provision to be made for analysis of the site investigation and recording.
- Provision to be made for publication and dissemination of the analysis and records of the site investigation.
- Provision to be made for archive deposition of the analysis and records of the site investigation.
- Nomination of a competent person or persons/organisation to undertake the works set out within the Written Scheme of Investigation.
- The site investigation shall be completed prior to development, or in such other phased arrangement, as agreed and approved in writing by the Local Planning Authority.

Reason - To safeguard archaeological assets within the approved development boundary from impacts relating to any groundworks associated with the development scheme and to ensure the proper and timely investigation, recording, reporting and presentation of archaeological assets affected by this development. This condition is required to be agreed prior to the commencement of any development to ensure matters of archaeological importance are preserved and secured early to ensure avoidance of damage or loss due to the development and/or its construction. If agreement was sought at any later stage there is an unacceptable risk of loss and damage to archaeological and historic assets.

9. ACTION REQUIRED PRIOR TO THE FIRST OCCUPATION OF DEVELOPMENT - ARCHAEOLOGICAL WORKS

No building shall be occupied until the site investigation and post investigation assessment has been completed, submitted to and approved in writing by the Local Planning Authority, in accordance with the programme set out in the Written Scheme of Investigation approved under condition 8 and the provision made for analysis, publication and dissemination of results and archive deposition.

Reason - To safeguard archaeological assets within the approved development boundary from impacts relating to any groundworks associated with the development scheme and to ensure the proper and timely investigation, recording, reporting and presentation of archaeological assets affected by this development.

- 8.1.2 Once a *draft* report has been submitted to and approved by the Conservation Team of Suffolk County Council's Archaeological Service subject to any required amendments or additions, a *final* report is prepared and distributed as per 5.3.6 and 5.3.7 of this Written Scheme of Investigation. The Client or agent acting on their behalf will then apply to Mid Suffolk District Council for a full discharge of the archaeological conditions.
- 8.1.3 No further site work will be embarked upon until the evaluation results are assessed by the Conservation Team of Suffolk County Council's Archaeological Service and the need for further work is established.
- 8.2 **General Conditions**
 - 8.2.1 A *draft* copy of the Written Scheme of Investigation, CB564 v.1.0, was submitted to the Conservation Team of Suffolk County Council's Archaeological Service for consideration in accordance with *Standard and guidance for commissioning work or providing consultancy advice on archaeology and the historic environment* by the Chartered Institute for Archaeologists (2014). Approval was received on 01 September 2017 prior to preparation of this *final* copy, CB564 v.1.1, and costs.
 - 8.2.2 Work will not commence until a completed *Contract* and/or Order from the Client reflecting the costs, terms and conditions of the *Contract* is received from the Client, agreeing to all costs and conditions as detailed in this document and providing information regarding the person/organisations responsible for payment of invoices. In the event of works commencing prior to return of a completed *Contract* and/or Order from the Client, all costs, terms and conditions are accepted as agreed.
 - 8.2.3 If Construction (Design and Management) Regulations 2009 apply, a health and safety plan will be required from the Client.
 - 8.2.4 Details of any soil contamination and above grounds hazards must be provided by the Client prior to fieldwork commencing. The potential of the area being contaminated by toxins must also be adequately investigated by the Client. No costs for tree-surgery, removal of undergrowth or hedges or other aspects not detailed in this Written Scheme of Investigation will be accepted by the Contractor.
 - 8.2.5 Costs and responsibility for any removal of spoil from site will remain with the Client.
 - 8.2.6 No responsibility will be accepted for any delay or failure in meeting agreed deadlines. This includes long periods of adverse weather conditions, ground contamination, vandalism, the presence of protected flora and fauna, unexploded ordnance, severe flooding, delays in the development programme or delays in the reporting process.
 - 8.2.7 A working day of 7.5 hours is operated by the Contractor.
 - 8.2.8 Figures were created from drawings provided by the Client.

8.3 **Quality Standards**

- 8.3.1 The highest possible standards will be sought by the Contractor, with the application of the most advanced and appropriate techniques possible within a context of continuous improvement aimed at maximising the recovery of archaeological data and contributing to the development of a greater understanding of Suffolk's historic environment.
- 8.3.2 The *Code of Conduct* (2014), *Regulations for Professional Conduct* (January 2015 revision) and *Standard and Guidance for archaeological field evaluation* (2014) by the Chartered Institute of Field Archaeologists (CIFA) will be adhered to.
- 8.3.3 Works will be carried out according to guidelines set out in *Standards for Field Archaeology in the East of England* (Gurney 2003), *Management of research projects in the historic environment. The MoRPHE Project Manager's Guide* (Historic England 2015) and *Requirements for a Trenched Archaeological Evaluation 2017* (Suffolk County Council Archaeological Service 2017).
- 8.3.4 Provisions for the monitoring of archaeological works by the Conservation Team of Suffolk County Council's Archaeological Service will be made at agreed project stages.

8.4 **Health and Safety**

- 8.4.1 All work is carried out to standards defined in the *Health and Safety at Work Act 1974*, *The Management of Health and Safety Regulations 1992* and *Health and Safety in Field Archaeology* (SCAUM 1997). Health and safety advice will be sought from Health and Safety Officers as required.
- 8.4.2 A Health and Safety Policy Statement and Risk Assessments has been prepared and included in this *final* Written Scheme of Investigation (*Appendix 1*). All staff and site visitors will be required to read the Risk Assessments and copies will be held in the site accommodation. Copies will be provided for inclusion in the health and safety plan/file as required.
- 8.4.3 Access to the health and safety policies of all other contractors on site will be required in compliance with *The Management of Health and Safety Regulations 1999*.
- 8.4.4 Protective clothing and equipment will be provided as required.

8.5 **Insurance**

- 8.5.1 The Contractor has Public Liability Insurance (£5million cover) and Personal Accident and Employers Liability Insurance (£10million cover). Full details can be provided upon request.

Bibliography

- Brickley M. and
McKinley, J., 2004 *Guidelines to the Standards for Recording Human Remains. IFA Paper No. 7*
- Campbell, G.,
Moffett, L., & Straker, V., 2011 *Environmental Archaeology. A Guide to the Theory and Practice of Methods, from Sampling and Recovery to Post-excavation (second edition)*. Portsmouth: English Heritage
- Gurney, D., 2003 *Standards for Field Archaeology in the East Of England*, East Anglian Archaeology Occasional Paper 14
- Medlycott, M., 2011 *Research and Archaeology Revisited: A Revised Framework for the East of England*. East Anglian Archaeology Occasional Paper 24
- MoRPHE 2015 *Management of Research Projects in the Historic Environment. The MoRPHE Project Manager's Guide* (Historic England)
- Murphy, P.L.,
analysis
and Wiltshire, P.E.J., 1994 *A guide to sampling archaeological deposits for environmental analysis*
- SCAUM 1999 *Health and Safety at Work Act 1974, The Management of Health and Safety Regulations 1992 and Health and Safety in Field Archaeology*
- SCCAS* 2017 *Requirements for a Trenched Archaeological Evaluation 2017*
- SCCAS* Conservation
Team 2017 *Archaeological Archives in Suffolk, Guidelines for preparation and deposition*

*Suffolk County Council Archaeological Service

For any further information, please do not hesitate to contact Chris Birks on 01603-737804/07963-969623 or at chris@chrisbirksarchaeology.co.uk

Appendix 1 Health and Safety Policy and Risk Assessments

This is the statement of general policy and arrangements for Chris Birks, 4 Well Green Row, Frettenham, Norwich, NR12 7GL and should be read in association with the site-specific Risk Assessments and Written Scheme of Investigation for Archaeological Trenched Evaluation at 'Plot adjacent to Providence House, Church Street, Fressingfield, Suffolk' (CB564 v. 1.1)

Site Address; 'Plot adjacent to Providence House, Church Street, Fressingfield, Suffolk' Start Date; t.b.a Expected duration; 1 week

Type of project; Trenched Archaeological Evaluation

Sequence; Mechanical excavation of modern overburden deposits and manual excavation and recording of archaeological remains

Person in charge of project; Chris Birks, Dip Sc, BSc, MCIFA

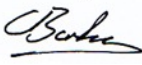
Nominated First Aider; John Simmons Staffing; Suitably qualified and experienced field archaeologists

Overall and final responsibility for health and safety is that of Chris Birks

Day-to-day responsibility for ensuring this policy is put into practice is delegated to Chris Birks

Statement of general policy	Responsibility of	Action / Arrangements
To prevent accidents and cases of work-related ill health and provide adequate control of health and safety risks arising from work activities	Chris Birks/Sole trader	Site specific risk assessments completed and actions arising out of those assessments implemented
To provide adequate training to ensure employees are competent to do their work	Chris Birks/Sole trader	Staff and subcontractors given necessary health and safety induction and provided with appropriate training (including hazard awareness) and personal protective equipment
To engage and consult with employees on day-to-day health and safety conditions and provide advice and supervision on occupational health	Chris Birks/Sole trader	Staff routinely consulted on health and safety matters as they arise but also formally consulted at regular health and safety performance review meetings or sooner if required
To implement emergency procedures - evacuation in case of fire or other significant incident	Chris Birks/Sole trader	Escape routes well signed and kept clear at all times. Evacuation plans are tested from time to time and updated as necessary
To maintain safe and healthy working conditions, provide and maintain plant, equipment and machinery, and ensure safe storage / use of substances	Chris Birks/Sole trader	Toilets, washing facilities and drinking water provided System in place for routine inspections and testing of equipment and machinery and for ensuring that action is promptly taken to address any defects Staff trained in safe handling/use of substances as appropriate
Health and safety law poster is displayed:	In the site office/mobile works vehicle	
First-aid box and accident book are located:	In the site office/mobile works vehicle	
Accidents and ill health at work reported under		

RIDDOR	
--------	--

Signed: (Employer)		Date:	03 September 2017	
Subject to review, monitoring and revision by:	Chris Birks	Every:	12	months or sooner if work activity changes

General Excavation and Site Survey

Plot adjacent to Providence House, Church Street, Fressingfield, Suffolk

Hazard	Who may be harmed	Existing Controls	Further Controls
Soil Contamination	<ul style="list-style-type: none"> • Employees carrying out manual excavation • Site Visitors 	<ul style="list-style-type: none"> • Wear suitable PPE; overalls, masks, impermeable gloves, steel toe-capped boots/Wellingtons • No eating, drinking or smoking • Hand/eye washing facilities to be made available 	<ul style="list-style-type: none"> • Additional washing/shower facilities • Provision of clean and dirty rooms
Falling into open excavated features/holes – risk of serious injury	<ul style="list-style-type: none"> • Employees carrying out excavation/survey • Site Visitors 	<ul style="list-style-type: none"> • Fencing/bunting around any holes • Awareness of ground conditions • Staff/visitor awareness on-site 	<ul style="list-style-type: none"> • Site induction
Falling over/onto grid/survey pegs – risk of serious injury	<ul style="list-style-type: none"> • Employees carrying out excavation/survey • Site Visitors 	<ul style="list-style-type: none"> • Staff/visitor awareness • Pegs to be covered with high visibility covers at all times 	
Carrying/lifting heavy objects	<ul style="list-style-type: none"> • Employees carrying out excavation • Delivery staff 	<ul style="list-style-type: none"> • Correct lifting methods to be employed • More than one person to carry heavy objects • Do not exceed maximum lifting weights 	<ul style="list-style-type: none"> • Site induction
Tetanus infection resulting from contact of soil and open wounds	<ul style="list-style-type: none"> • Employees • Site Visitors 	<ul style="list-style-type: none"> • Must have up to date tetanus immunisation • All open wounds to be appropriately dressed 	
Ingestion of contaminated soil – bacterial/viral/inorganic	<ul style="list-style-type: none"> • Employees • Site Visitors 	<ul style="list-style-type: none"> • Provision of hand washing facilities • Wash hands before eating/smoking 	<ul style="list-style-type: none"> • Soil testing prior to excavation

Name.....Chris Birks..... Signature..... 

Date.....03 September 2017.....



4 Well Green Row, Frettenham, Norwich, Norfolk, NR12 7GL
 Tel: 01603 737804 Mob: 07963 969623
 Email: chris@chrisbirksarchaeology.co.uk

General Excavation and Site Survey

Plot adjacent to Providence House, Church Street, Fressingfield, Suffolk

Hazard	Who may be harmed	Existing Controls	Further Controls
Biological contamination, e.g. from rats (leptospirosis), pigeons	<ul style="list-style-type: none"> • Employees • Site Visitors 	<ul style="list-style-type: none"> • Care when in area subject to infestation where animal urine may be present • Attention to all open wounds • Wash hands before eating, drinking or smoking • Wear gloves whenever appropriate • Report any possible illness to doctor & take leptospirosis risk card 	<ul style="list-style-type: none"> • Carry leptospirosis risk card
Use of hand tools	<ul style="list-style-type: none"> • Employees 	<ul style="list-style-type: none"> • Use appropriate tools for specific task/s • Ensure knowledge of correct use of tools 	<ul style="list-style-type: none"> • Training for use of tools

Name.....Chris Birks..... Signature..... 

Date.....03 September 2017.....

Supervising/working with heavy plant

Plot adjacent to Providence House, Church Street, Fressingfield, Suffolk

Hazard	Who may be harmed	Existing Controls	Further Controls
Personal Injury	<ul style="list-style-type: none"> • Employees • Site Visitors 	<ul style="list-style-type: none"> • Site Induction – staff/visitor awareness • Use of certified sub-contractors • Appropriate personal protective equipment to be issued • Avoid lone working where possible • Maintain safe distance from plant • Ensure driver is aware of your location at all times 	<ul style="list-style-type: none"> • Appropriate fencing and signage • Exclusion of site visitors • Hold current CITB card • Clear communication with driver
Collateral damage	<ul style="list-style-type: none"> • Employees • Site Visitors • Members of the public 	<ul style="list-style-type: none"> • Site awareness, hazards in particular • Use of appropriate machinery • Use of certified sub-contractors 	<ul style="list-style-type: none"> • Appropriate signage and safety considerations • Communication between contractors & sub-contractors
Collision between personnel, plant and/or public traffic	<ul style="list-style-type: none"> • Employees • Site Visitors • Members of the public 	<ul style="list-style-type: none"> • All personnel to wear high visibility vests at all times • Demarcate site boundary to ensure separation between site and live carriageway/works • Close and divert pedestrians from any footpath within site boundary 	<ul style="list-style-type: none"> • Appropriate signage and safety considerations • Plant to have operating flashing beacons
Striking existing services	<ul style="list-style-type: none"> • Employees 	<ul style="list-style-type: none"> • Area/s of work to be CAT scanned • All services to be located and clearly marked • Hand dig only in area/s local to services • Banksman present at all times 	<ul style="list-style-type: none"> • Plans of service runs to be consulted prior to excavations

Name.....Chris Birks..... Signature..... 

Date.....03 September 2017.....



4 Well Green Row, Frettenham, Norwich, Norfolk, NR12 7GL
Tel: 01603 737804 Mob: 07963 969623
Email: chris@chrisbirksarchaeology.co.uk

Plot adjacent to Providence House, Church Street, Fressingfield, Suffolk

Additional
To be completed on-site as required

Hazard	Who may be harmed	Existing Controls	Further Controls

Appendix 2 Context Summary

Context No.	Type	Description	Thickness	Finds	Spot date	Date/Initials
100	D	Dark grey silty sand topsoil with moderate small- to medium-sized chalk pieces and occasional small-sized subangular flints	c. 0.35 – 0.50m	No	-	CB/02 Jun 17
101	D	Light to mid grey silty sand subsoil with occasional small-sized chalk pieces and occasional small-sized subangular flints	c. 0.15m	No	-	CB/02 Jun 17
102	D	Very compact light yellow clay undisturbed 'natural' deposits with rare small-sized subangular flints	-	No	-	CB/02 Jun 17
103	C	Pit	-	-	-	CB/02 Jun 17
104	D	Very dark grey silty sand fill of [103] with occasional small- to medium-sized CBM fragments, moderate small- to medium-sized chalk pieces and occasional small-sized subangular flints	>0.50m	Pottery, brick	Modern	CB/02 Jun 17
105	C	Pit	-	-	-	CB/02 Jun 17
106	D	Very dark grey silty sand fill of [105] with occasional small- to medium-sized CBM fragments, moderate small- to medium-sized chalk pieces and occasional small-sized subangular flints	c. 0.15m	Pottery, brick	Modern	CB/02 Jun 17
107	C	Pit	-	-	-	CB/02 Jun 17
108	D	Mid grey silty sand fill of [107] with moderate small- to medium-sized chalk pieces and occasional small-sized subangular flints	c. 0.20m	Pottery	Modern	CB/02 Jun 17

Appendix 3 OASIS Record

OASIS ID: *chrisbir1-340098*

Project details

Project name	Trenched Archaeological Evaluation at 'Plot adjacent to Providence House, Church Street, Fressingfield, Suffolk'
Short description of the project	Trenched archaeological evaluation revealed modern features alone and no further archaeological work was required
Project dates	Start: 02-06-2017 End: 02-06-2017
Previous/future work	No / No
Any associated project reference codes	FRS 100 - Sitecode
Type of project	Field evaluation
Current Land use	Other 5 - Garden
Monument type	PIT Modern
Significant Finds	SHERD Modern
Significant Finds	BRICK Modern
Methods & techniques	""Sample Trenches""
Development type	Urban residential (e.g. flats, houses, etc.)
Prompt	Direction from Local Planning Authority - PPG16
Position in the planning process	After full determination (eg. As a condition)

Project location

Country	England
Site location	SUFFOLK MID SUFFOLK FRESSINGFIELD Plot adjacent to Providence House, Church Street, Fressingfield, Suffolk
Study area	27 Square metres
Site coordinates	TM 2617 7745 52.347858019166 1.321113302201 52 20 52 N 001 19 16 E Point

Project creators

Name of Organisation	Chris Birks
Project brief originator	Local Authority Archaeologist and/or Planning Authority/advisory body
Project design originator	Chris Birks
Project director/manager	Chris Birks
Project supervisor	Chris Birks
Type of sponsor/funding body	Landowner

Project archives

Physical Archive Exists?	No
--------------------------	----

Digital Archive Exists?	No
Paper Archive recipient	Suffolk County Council
Paper Archive ID	FRS 100
Paper Contents	"none"
Paper Media available	"Plan","Report","Section","Unpublished Text"

Project bibliography 1

Publication type	Grey literature (unpublished document/manuscript)
Title	Report on Trenched Archaeological Evaluation at 'Land adjacent to Providence House, Church Street, Fressingfield, Suffolk, FRS 100'
Author(s)/Editor(s)	Birks, C.,
Other bibliographic details	Report Number CB564R
Date	2019
Issuer or publisher	Chris Birks
Place of issue or publication	Contractor's Report
Description	A4 unbound paper copy with fold-out A3 drawings plus .pdf digital copy

Entered by	Chris Birks (chris.birks@chrisbirksarchaeology.co.uk)
Entered on	24 January 2019

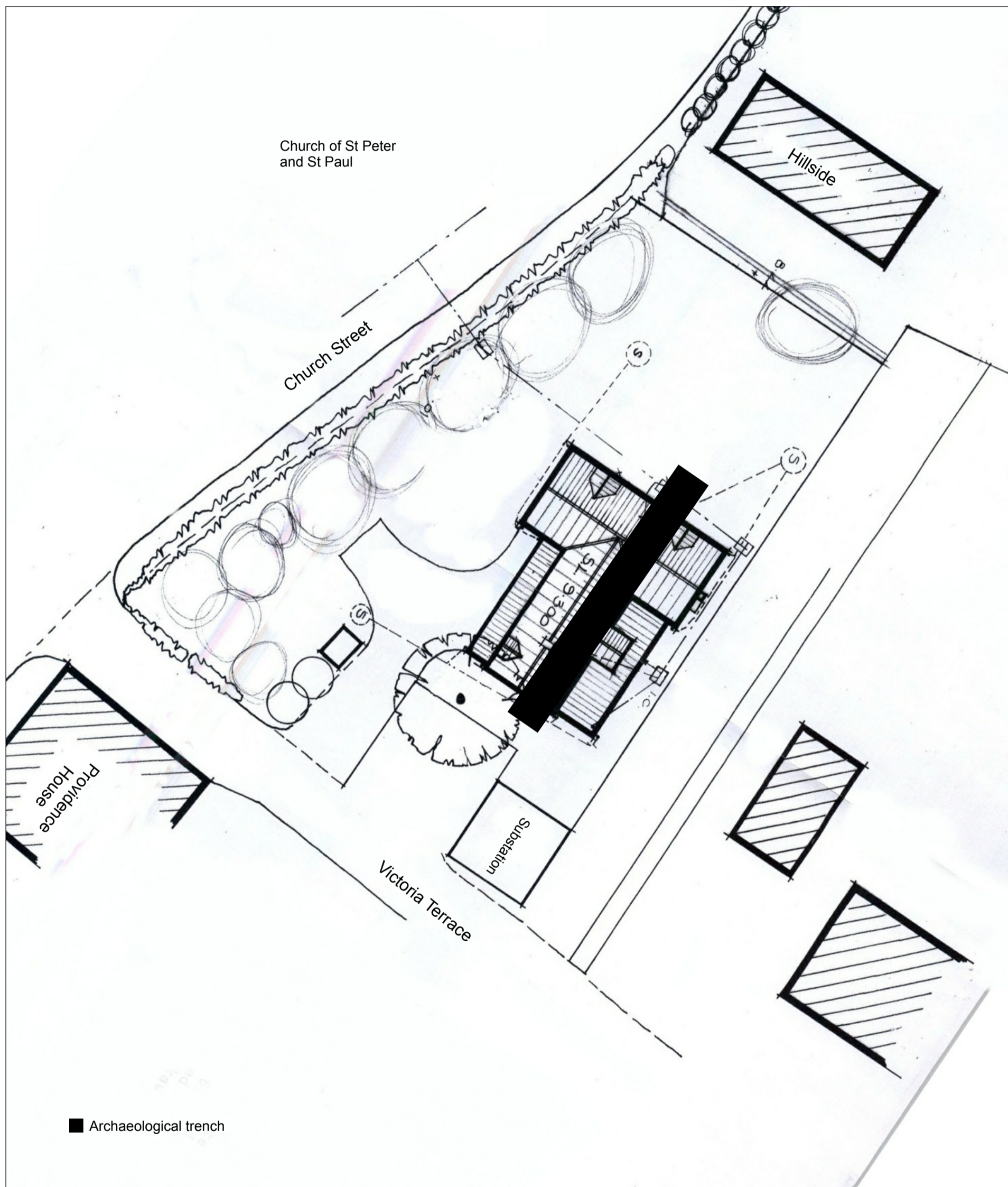
OASIS:

Please e-mail [Historic England](#) for OASIS help and advice

© ADS 1996-2012 Created by [Jo Gilham and Jen Mitcham](#), email Last modified Wednesday 9 May 2012

Cite only: <http://www.oasis.ac.uk/form/print.cfm> for this page

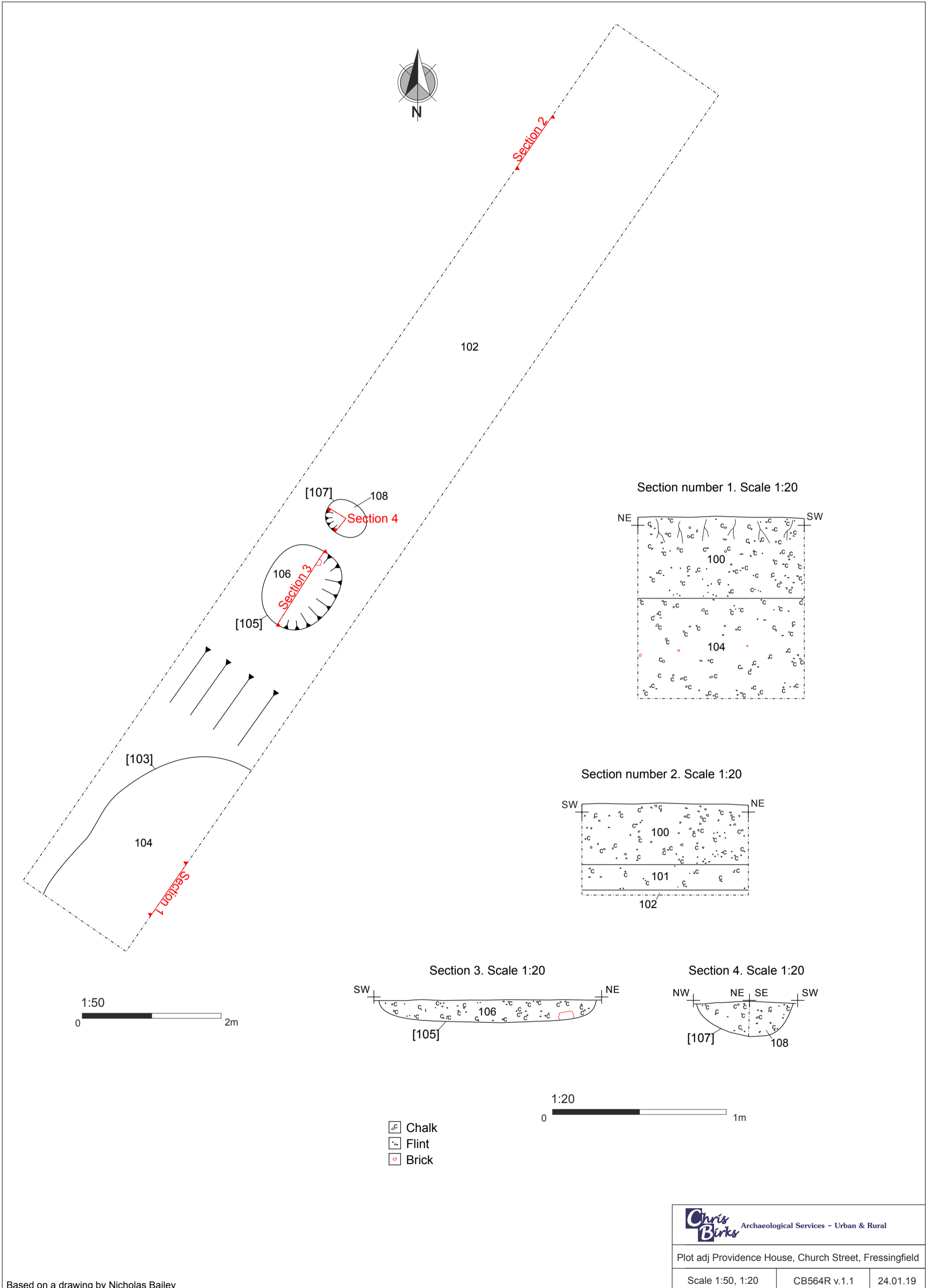
[Cookies](#) [Privacy Policy](#)



Based on a drawing by Nicholas Bailey

Plot adj Providence House, Church Street, Fressingfield		
Scale 1:200@A3	CB564R v.1.1	24.01.19

Figure 2. Site plan



Based on a drawing by Nicholas Bailey

Figure 3. Site drawings