

Desk-based assessment at Kingsway Mobile Park, Warmley, Bristol



© Worcestershire County Council

Worcestershire Archaeology
Archive and Archaeology Service
The Hive, Sawmill Walk,
The Butts, Worcester
WR1 3PD

Status:
Date: 21 April 2017
Author: Nina O'Hare – nohare@worcestershire.gov.uk
Illustrator: Carolyn Hunt
Project reference: P5041
Report reference: 2447
Oasis id: fieldsec1-283277

Contents

Summary	1
1 Background	3
1.1 Reasons for the project	3
1.2 Planning background	3
2 Aims	3
3 Methods	3
3.1 Personnel	3
3.2 Documentary research	4
3.3 List of sources consulted	4
3.4 Other methods	5
3.5 Impact assessment criteria	5
4 The application site	6
4.1 Location and size	6
4.2 Topography, geology and soils	7
4.3 Current land-use	7
4.4 Historic land-use and archaeological character	7
5 Heritage assets	7
5.1 Designated heritage	7
5.2 Undesignated heritage assets	7
5.2.1 Prehistoric	8
5.2.2 Roman	8
5.2.3 Medieval	8
5.2.4 Post-medieval	8
5.2.5 Modern	9
5.2.6 Archaeological heritage assets	9
5.3 Potential heritage assets	10
5.3.1 1841 tithe plan	11
5.3.2 1st edition 1882 Ordnance Survey	11
5.3.3 1904 Ordnance Survey	11
5.3.4 1915 Ordnance Survey	11
5.3.5 1960 Ordnance Survey	11
6 Assessment of the significance of heritage assets	11
6.1 Designated assets	11
6.1.1 Scheduled ancient monument	11
6.1.2 Listed buildings	12
6.1.3 Conservation Area	12
6.1.4 Registered parks and gardens	13
6.2 Undesignated assets	13
6.2.1 Historic buildings	13
6.2.2 Sites of archaeological interest	13
7 The impact of the development	15
7.1 Direct impacts	15
7.2 Indirect impacts	15
8 Recommendations	17
9 Publication summary	18
10 Acknowledgements	18

Desk-based assessment at Kingsway Mobile Park, Warmley, Bristol

Nina O'Hare

Illustrations by Carolyn Hunt

Summary

A desk-based assessment for the historic environment was undertaken at Kingsway Mobile Park, Warmley, Bristol (NGR ST 66840 72775). It was undertaken on behalf of EJ Planning Ltd whose client intends to extend the static caravan park, for which a planning application will be submitted.

This report describes and assesses the significance of the heritage assets and potential heritage assets that are may be affected by the application. The setting of heritage assets is also considered. The potential impact of the application, and the need for further on-site evaluation, is assessed.

The site is currently a car park. It formerly lay on the western side of William Champion's 18th century brass works, and to the south of Warmley House and landscape garden. Cartographic evidence shows that the site was occupied by the southern extent of a man-made lake associated with the industrial complex. Along the southern boundary, the site may also include the northern edge of a row of terraced houses built by Champion for his workers. The terrace was demolished in 1968 although the foundations and associated artefacts may survive.

The site lies within Warmley brass works scheduled ancient monument, Warmley Conservation Area and registered garden. Consequently, the proposed development will require scheduled monument consent. In most cases, the impact of the development on heritage assets is considered to be not significant. Recommendations have been made of how to mitigate any potentially negative impacts.

Report

1 Background

1.1 Reasons for the project

A desk-based assessment was undertaken at Kingsway Mobile Park, Warmley, Bristol (Fig 1, NGR ST 66840 72775). It was undertaken on behalf of EJ Planning Ltd whose client intends to expand the caravan park with additional mobile homes to the south over the present car park, for which a planning application will be submitted to South Gloucestershire Council.

The proposed development site is considered likely to affect heritage assets and potential heritage assets, the significance of which may be affected by the application.

The project also conforms to the *Standard and guidance for historic environment desk-based assessment* (ClfA 2014).

The event reference for this project is yet to be assigned by South Gloucestershire HER.

1.2 Planning background

Present government planning policy is contained within the *National Planning Policy Framework* (DCLG 2012). This is supplemented by detailed guidance (DCLG 2014) and the *South Gloucestershire Local Plan* (SGC 2013), which includes the following relevant policies:

Policy CS9 – Managing the environment and heritage

The natural and historic environment is a finite and irreplaceable resource. In order to protect and manage South Gloucestershire's environment and its resources in a sustainable way, new development will be expected to:

1. Ensure that heritage assets are conserved, respected and enhanced in a manner appropriate to their significance
3. Conserve and enhance the character, quality, distinctiveness and amenity of the landscape

Policy CS29 – Communities of the East Fringe of Bristol urban area

Development plan documents and development proposals will take account of the vision for the communities of the East Fringe of Bristol urban area and the partnership priorities, and will:

8. Recognise, protect and enhance the heritage assets of the area, including the distinctive industrial and non-conformist heritage and the Avon Valley Railway

2 Aims

In addition to the policies identified above, the general aims of this assessment are to:

- establish the nature and extent of the heritage assets;
- assesses the significance of the heritage assets within the application site and affected by the proposed development;
- assess the impact of the application on the heritage assets.

3 Methods

3.1 Personnel

The assessment was undertaken by Nina O'Hare (BA), who joined Worcestershire Archaeology in 2015. The project manager responsible for the quality of the project was Tom Vaughan (BA, MA, ACIfA). Illustrations were prepared by Carolyn Hunt (BSc, PG Cert, MCIfA) and Nina O'Hare.

3.2 Documentary research

All relevant information on the history of the site and past land-use was collected and assessed. Records of known archaeological sites and monuments were obtained from South Gloucestershire Historic Environment Record (HER). Historic maps and published sources were consulted at Gloucestershire Archives.

The results are mapped on Figures 3-7 and the details of individual features of the historic environment are given in Appendix 1, and events in Appendix 2. Event records have been omitted where this would repeat information in other record types and would not materially affect the assessment. South Gloucestershire HER references are used throughout this assessment with the prefix SGHER. In the case of scheduled ancient monuments and registered gardens, National Heritage List numbers (NHL) have been used instead.

3.3 List of sources consulted

Cartographic sources

- 1841 Siston Tithe map
- 1st edition 1882 Ordnance Survey, 1:2,500, sheet 76.4 (Fig 3)
- 1904 Ordnance Survey, 1:2,500, sheet 76.4
- 1915 Ordnance Survey, 1:2,500, sheet 76.4 (Fig 4)
- 1960 Ordnance Survey, 1:63,360, sheet 156

Documentary sources

- Atkins Heritage 2007 *Champion's Brassworks & Gardens: Conservation Management Plan – Final Report*, http://www.southglos.gov.uk/documents/warmleycmp20feb07_v1.pdf accessed 31 March 2017
- Avon Archaeological Unit 2012 *William Champion's Warmley Brass and Zinc works, Warmley, South Gloucestershire – Archaeological Investigations and Recording 1994-2011*, , [https://www.academia.edu/7697452/Etheridge D. J. and Dungworth D. 2012 William Champion s Warmley Brass and Zinc Works Warmley South Gloucestershire. Archaeological Investigation and Recording 1994-2011](https://www.academia.edu/7697452/Etheridge_D._J._and_Dungworth_D._2012_William_Champion_s_Warmley_Brass_and_Zinc_Works_Warmley_South_Gloucestershire._Archaeological_Investigation_and_Recording_1994-2011) accessed 23 March 2017
- BGS 2017 *Geology of Britain Viewer*, <http://mapapps.bgs.ac.uk/geologyofbritain/home.html> , British Geological Survey, accessed 16 March 2017
- ClfA 2014 *Standard and guidance for historic environment desk-based assessment*, Chartered Institute for Archaeologists, updated December 2014
- Chapman, M, 1997 *Avon Historic Landscape Characterisation (draft)*, http://archaeologydataservice.ac.uk/archives/view/avon_hlc_2014/downloads.cfm accessed 17 March 2017
- Cotswold Archaeology 2004 *The proposed Kingswood Remembrance Park, Grimsbury Farm, Kingswood, South Gloucestershire – Archaeological Evaluation*, unpublished report no. 04007
- Day, J, 1988 *The Bristol brass industry: Furnace structures and their associated remains*, [http://www.brassmill.com/linked/1988 - bristol brass furnaces - day.pdf](http://www.brassmill.com/linked/1988_-_bristol_brass_furnaces_-_day.pdf) accessed 10 April 2017
- DCLG 2012 *National Planning Policy Framework*, Department for Communities and Local Government

- DCLG 2014 *Conserving and enhancing the historic environment*, <http://planningguidance.communities.gov.uk/blog/guidance/conserving-and-enhancing-the-historic-environment/> accessed 23 March 2017
- English Heritage 2011 *The setting of heritage assets*, English Heritage
- Historic England 2017 *Brass works at Warmley*, <https://historicengland.org.uk/listing/the-list/list-entry/1015556> accessed 31 March 2017
- SGC 1997a *Advice Note 30: Warmley Conservation Area*, South Gloucestershire Council, <https://www.southglos.gov.uk/documents/pte050048.pdf> accessed 31 March 2017
- SGC 1997b *Warmley Conservation Area: Management Guidance No.2 – Kingsway Trailer Park*, South Gloucestershire Council <http://www.southglos.gov.uk/Documents/PTE050053.pdf> accessed 31 March 2017
- SGC 2013 *South Gloucestershire Local Plan – Core Strategy*, South Gloucestershire Council, <http://www.southglos.gov.uk/documents/cleanversionforinterimpublishation2.pdf> accessed 23 March 2017
- Webster, C, (ed.) 2008 *The Archaeology of South West England: South West Archaeological Research Framework – Resource Assessment and Research Agenda*, Somerset County Council

The following sources were not considered relevant to this project:

A search of Historic England's aerial photograph archive was undertaken for the area around the site. Whilst the approximate centres of four vertical aerial photographs (listed below) are near to the site, none have been ordered for viewing as they are unlikely to provide any additional information to that already known from historic mapping. Aerial photographs likely to include the site are:

- RAF/82/1127 frame 210 (taken 1955)
- OS/60062 frame 6 (taken 1960)
- OS/70118 frame 240 (taken 1970)
- OS/80155 frame 270 (taken 1980)

3.4 Other methods

A site visit was undertaken on the 21 March and historic maps were viewed at Gloucestershire Archives on 28 March 2017.

This assessment is limited to consideration of heritage assets and potential assets that are relevant to the application site.

3.5 Impact assessment criteria

The criteria cited in Table 1 have been used in the impact assessment.

Major Beneficial: Demonstrable improvement to a designated heritage asset of the highest order (or its setting), or non-designated asset (or its setting) of archaeological interest of demonstrable significance equal to that of a scheduled monument. Designated assets will include scheduled monuments, grade I/II* listed buildings, grade I/II* registered parks and gardens, registered battlefields, protected wrecks or World Heritage Sites. Improvement may be in the asset's management, its amenity value, setting, or documentation (for instance enhancing its research value). It may also be in better revealing a World Heritage Site or Conservation Area's significance.

<p>Beneficial: Demonstrable improvement to a designated heritage asset (or its setting), or non-designated asset (or its setting) of archaeological interest such that the level of improvement will demonstrably have a minor effect on the area and its heritage resource, either at a local or regional level. For instance grade II listed buildings, Conservation Areas and undesignated heritage assets important at a sub-national level. Improvement may be in the asset's management, its amenity value, setting, or documentation (for instance enhancing its research value).</p>
<p>Not Significant: Impacts that have no long-term effect on any heritage asset.</p>
<p>Minor Adverse: Minor harm to a designated heritage asset (or its setting), or non-designated asset (or its setting) of archaeological interest such that the level of harm will demonstrably have a minor effect on the area and its heritage resource, either at a local or regional level. For instance grade II listed buildings, Conservation Areas and undesignated heritage assets important at a sub-national level.</p>
<p>Moderate Adverse: Minor harm to a designated heritage asset (or its setting) of the highest significance, or non-designated asset (or its setting) of archaeological interest of demonstrable significance equal to that of a scheduled monument. For instance scheduled monuments, grade I/II* listed buildings, grade I/II* registered parks and gardens, registered battlefields, protected wrecks or World Heritage Sites.</p> <p>Harm to a designated heritage asset (or its setting), or non-designated asset (or its setting) of archaeological interest such that the level of harm will demonstrably affect the area and its heritage resource, either at a local or regional level. For instance grade II listed buildings, Conservation Areas and undesignated heritage assets important at a sub-national level.</p>
<p>Major Adverse: Harm to a designated heritage asset (or its setting) of the highest significance, or non-designated asset (or its setting) of archaeological interest of demonstrable significance equal to that of a scheduled monument. For instance scheduled monuments, grade I/II* listed buildings, grade I/II* registered parks and gardens, registered battlefields, protected wrecks, World Heritage Sites or harm to a building or other element that makes a positive contribution to the significance of a Conservation Area as a whole.</p> <p>Substantial harm to, or loss of, a designated heritage asset (or its setting), or non-designated asset (or its setting) of archaeological interest such that the level of harm or loss will demonstrably affect the area and its heritage resource, either at a local or regional level. For instance grade II listed buildings, Conservation Areas and undesignated heritage assets important at a sub-national level.</p>
<p>Severe Adverse: Substantial harm to, or loss of, a designated heritage asset (or its setting) of the highest significance, or non-designated asset (or its setting) of archaeological interest of demonstrable significance equal to that of a scheduled monument. For instance scheduled monuments, grade I/II* listed buildings, grade I/II* registered parks and gardens, registered battlefields, protected wrecks, World Heritage Sites or the loss of a building or other element that makes a positive contribution to the significance of a Conservation Area as a whole.</p>
<p>Unknown: Where there is insufficient information to determine either significance or impact for any heritage asset, or where a heritage asset is likely to exist but this has not been established, or where there is insufficient evidence for the absence of a heritage asset. For instance where further information will enable the planning authority to make an informed decision.</p>

Table 1: Impact assessment criteria for heritage assets

4 The application site

4.1 Location and size

The study area includes the application site (Figs 1-2) and heritage assets within c 1km of Kingsway Mobile Park (Figs 5-7), which have been considered in order to provide a broader understanding of the local context. The area of proposed development is 2,450m².

4.2 Topography, geology and soils

The site is situated near a bend in the Siston Brook, between Tower Lane to the south and Warmley gardens to the north. Kingswood Museum borders the site to the west and to the east lies a business park and industrial units. The site is relatively level, with a slight southwards slope down towards Tower Lane and a short slope along the northern boundary up to Warmley gardens. To the north-east of the site the ground leads up to a prominent rise, on which sits Warmley House (Plate 2).

The underlying geology is a mixture of mudstone, siltstone and sandstone of the South Wales Coal Measures formation. Whilst a superficial deposit of alluvium, deposited by the Siston Brook, overlies much of the bedrock in this the area, there is no superficial deposit recorded on the site itself (BGS 2017).

4.3 Current land-use

The site is currently a car park for Kingsway Mobile Park with an access road along the western site boundary (Plate 1). Tree lines separate the site from Warmley gardens and a separate car park to the south, which lies between the site and Tower Lane.

4.4 Historic land-use and archaeological character

The site lies between the historic cores of Warmley village, to the north, and Cadbury Heath to the south. It is likely to have formed part of the agricultural landscape surrounding these settlements until William Champion founded a brass works along this bend of the Siston Brook in 1746 (Figs 3-4). The wider area surrounding the brass works predominately remained in agricultural use into the 20th century, when industrial and residential development connected Cadbury Heath and Warmley.

The Avon Historic Landscape Characterisation categorises the site area as type E2 – a 'post-medieval designed ornamental landscape'. Such landscapes occur throughout the county and typically contain aesthetic tree plantations, artificial lakes and ornamental buildings (Chapman 1997, 10-11). The wider area around the site is predominately characterised as large scale utility landscapes, which are typically 19th and 20th century industrial sites.

5 Heritage assets

5.1 Designated heritage

The site lies within Warmley Conservation Area (SGHER 20517), the grade II registered Warmley gardens (NHL 1000356) and scheduled ancient monument of Warmley brass works (NHL 1015556), which covers the buildings, house and garden associated with William Champion's 18th century brass works (Fig 5).

Warmley House (SGHER 1432) is grade II* listed and lies c 90m north-east of the site. Several grade II listed buildings connected with the brass works are also located within 100m of the site – a windmill tower attached to the Dalton Young building (SGHER 1430), icehouse (SGHER 12635), statue of Neptune (SGHER 1429), grotto (SGHER 12634), kitchen garden gateway (SGHER 12786), clock tower (SGHER 12637), summerhouse (SGHER 1425) and Warmley House gates (SGHER 12636).

Within the wider study area are nine grade II listed houses (SGHER 6475, 14949-50, 15873, 15950-3, 15981) and Warmley war memorial (SGHER 15066), which is also grade II listed – all of these lie over 500m to the north of Kingsway Mobile Park (Fig 7).

There are no registered battlefields or wrecks within the wider study area.

5.2 Undesignated heritage assets

A number of undesignated heritage assets are recorded by the HER within the site and wider study area, predominately relating to post-medieval industrial activity and associated settlement (Figs 6-7, Appendix 1).

5.2.1 Prehistoric

There are no prehistoric heritage assets within the site and very little evidence from the wider study area. A 1777 map reference to 'Barrows' suggests that there may have been a Bronze Age round barrow at Lower Barrs Court, Oldland (SGHER 1435), c 600m west of the site. Alternatively though, the label may refer to Barrows Court, a variant of Barrs Court. Approximately 500m to the north-west, the HER records a possible enclosure (SGHER 1428) at Grimsbury Farmhouse that was thought to be later prehistoric in date, although an archaeological evaluation in 2004 found no evidence of this (Cotswold Archaeology 2004).

5.2.2 Roman

Approximately 550m east of the development site lies a Roman road (SGHER 1353), which runs roughly north to south from Bitton to Berkeley and is partially preserved as earthworks and a section of by-road. The road has been confirmed several times by archaeological investigations, including a 1993 excavation to the north-east of the site at Church Avenue, Warmley (SGHER 9581). No other Roman activity or stray finds have been recorded in the area.

5.2.3 Medieval

There are no medieval heritage assets within or adjacent to the development site. Within the wider study area, a number of settlements are thought to have medieval origins – Lower Barrs Court Farm (SGHER 14495) to the south-west of the site, Grimsbury Farm to the west (SGHER 14498), Deanery Road to the north-west (SGHER 14499), Siston Common to the north (SGHER 14508) and Springfield Farm to the north-east (SGHER 14505). Grimsbury Farm is a locally listed building and may have formerly been a grange (SGHER 13454), although it was heavily altered in the 1980s.

An archaeological evaluation at the former Crown Farm (SGHER 14004), c 280m north of Kingsway Mobile Park, recovered a small collection of medieval and post-medieval pottery (SGHER 14002). The farm was demolished in 1956, although excavations in 1999 revealed that substantial remains of the farm buildings survive and suggest that it was established in the early medieval period.

5.2.4 Post-medieval

A terrace of thirteen workers' houses (SGHER 14618) stood along the southern site boundary until c 1968, when they were demolished by the county council. The northern and southern site boundaries appear to preserve the southern extent of a former lake associated with Champion's brass works (SGHER 19919).

Adjacent to the south-western site boundary is a windmill tower (SGHER 1430), probably used to crush ore for the brass works, a possible cementation furnace (SGHER 3154) and sluice at the edge of the former lake (SGHER 19920). Within Warmley gardens, to the east of the site, are a prospect mound (SGHER 18513), Echo Pond (SGHER 19813) and locally listed pond walls (SGHER 16733), garden walls (SGHER 16734, 16737) and boat house (SGHER 16735). All of these heritage assets were built within Warmley House gardens during the mid-late 18th century and form part of the present registered park.

Champion's brass works extended east from the present museum and across the site to Tower Road North. Industrial buildings A-N, of unknown function, have been recorded by the HER from the Siston Tithe map (SGHER 19904-19917), along with a possible furnace pond (SGHER 19918), office (10540), culvert (SGHER 19178) and outbuilding of Warmley House (SGHER 18518). Several locally listed 19th century houses and notable boundary walls are located around the entrance to Warmley House on Tower Road North (SGHER 14810, 14845, 16746, 17345).

Following the sale of Champion's brass works in 1769, production continued on a smaller scale and may have been connected to the Grimsbury Pit colliery (SGHER 12966). In the mid-19th century the complex was converted into a ceramic pipe works, which was associated with the clay

pit east of Tower Road North (SGHER 10542) and tramway (SGHER 8106) that ran from the Clock Tower through a tunnel (SGHER 10541) to the clay pit. The location of a pottery kiln (SGHER 14807) connected to Haskins Pottery, which closed in 1967, is identified on the 1904 Ordnance Survey map and subsequent editions.

The wider area also contains many post-medieval heritage assets; demonstrating the region's industrial history. Between 500m and 1km from the site, primarily to the north and west, were eleven collieries (SGHER 1426, 1434, 1438, 2295, 4195, 4200, 5143, 9778, 9895, 12965-6), seven mine shafts (SGHER 6494-5, 9346, 16234-5, 16507-8) and a coke oven (SGHER 16229). Two smithies operated north of the site at Deanery Farm (SGHER 6479) and Springfield Farm (SGHER 13222), of which the latter is a locally listed building. A sophisticated drainage system dating to the mid-18th century (SGHER 12860), possibly for coal mines, was recorded during the construction of the Avon ring road, along with a drainage level (SGHER 12969). The findspot of a pumping engine pipe, probably from Grimsbury pit, is recorded to the west (SGHER 12970).

Other industrial works in the wider study area include a sewage works on the western bank of the Siston Brook to Warmley gardens (SGHER 19777), the West of England Ochre Works (SGHER 14003), a copper works along Mill Lane (SGHER 2301), 320m south-east of the site, Deanery Road Fireworks factory (SGHER 17310) and the Hollybrook Brick Company (SGHER 4194) over 500m to the north – all of these factories have subsequently closed and been demolished. Adjacent to the brick works was another clay pit (SGHER 16475) and 350m south-east of the site were three mounds (SGHER 15234-6), possibly coal heaps or clay extraction waste.

Warmley became increasingly connected to other places with improved transport links during the post-medieval period. The present A420 road runs along the line of the old London Road from Bristol to Warmley (SGHER 6473), which is shown on the earliest known map of 1610. In 1869, the Midland Railway branch from Mangotsfield Junction to Bath opened (SGHER 4769) along with Warmley railway station (SGHER 16493). The railway line closed in 1966, but a signal box (SGHER 11040) and goods shed (SGHER 16484) survive, along with the locally listed timber waiting room (SGHER 5097) and statue at Warmley station (SGHER 16699). Immediately east of the railway line ran a tramway (SGHER 5922-7, 8106), alongside which is a locally listed drinking foundation (SGHER 16673).

Numerous late post-medieval houses, some of which are listed buildings or locally listed, are clustered along what is now the A420 through Warmley and Tower Road South, with a few by the entrance to Warmley House. Two 19th century inns also lie along the A420 (SGHER 13174, 13224) and there are three locally listed Methodist Chapels on or off Tower Road South (SGHER 10685-7). The nearest of these to the site is the Ebenezer Methodist Church (SGHER 10686) and attached cemetery (SGHER 16239), which is c 115m due south.

5.2.5 Modern

During World War II, the cellar of Warmley House was converted into an air raid shelter (SGHER 19223) and an Italian prisoner of war camp (SGHER 16100) was built 500m south-west of the site. The HER also records an early 20th century electricity substation (SGHER 14806) on the eastern edge of the former brass works, however, this has been demolished.

5.2.6 Archaeological heritage assets

Archaeological investigations and salvage excavations across the former brass works site have revealed the remains of several structures that formed part of Champion's industrial complex, demonstrating that archaeological remains dating to this era have not been totally lost to later re-development. A watching brief of the foundations for an extension to Warmley House in 1986 (SGHER 12795) revealed three 18th century brass cementation furnaces (Day 1988, 28). In 1992 a probable soakaway underneath a layer of industrial waste was also recorded during the extension of Tower Lane (SGHER 8616).

Between 1994 and 2011, Avon Archaeological Unit undertook a number of archaeological projects within the scheduled ancient monument of Warmley brass works (Avon Archaeological Unit 2012).

Excavations in advance of a road widening scheme in 1994 encountered fifteen walls below demolition rubble, confirming that considerable remains of Champion's brass works survive below the surface (SGHER 9755, *Ibid*, 8-9) which contributed to the site's designation as a scheduled ancient monument the following year. A 1994 evaluation (SGHER 9666; *Ibid*, 7-8) and 2002 watching brief (SGHER 14626; *Ibid*, 10) adjacent to Warmley House revealed the remains of animal pens and a drain, and the wall of a structure that was probably attached to Warmley House. A watching brief of geotechnical test pits in 2002 (SGHER 10370) and a small excavation in 2009 (SGHER 19068; *Ibid*, 26) around the clock tower revealed redeposited industrial waste but no remains of Champion's brass works. Conversely, a 2006 watching brief of a service trench in the clock tower car park (SGHER 18004; *Ibid*, 12-13) recorded modern made ground overlying several structures, a culvert and floor surfaces that relate to the brass works and later Haskins pottery.

In 2006, English Heritage recorded a c 90m long section of bank to the north of the former Lindman Works that had been cut back without scheduled monument consent (SGHER 18094). Exposed in the bank section was a truncated stone culvert and buildings, along with industrial deposits containing evidence of zinc and copper production (Avon Archaeological Unit 2012, 14). Further archaeological recording of the bank undertaken in early 2007 (SGHER 18153) identified a second culvert, third structure and two large pits of unknown function. Analysis has allowed the function of several industrial buildings to be identified and shown that one of the structures is a previously unknown building that fell out of use during the lifetime of the brass works (*Ibid*, 58-62).

During an excavation of five service trenches between Tower Road North and the former Lindman Works later in 2007 (SGHER 18371), four further structures related to Champion's brass works were revealed, as well as late 19th century structures connected to Haskins pottery and an early 20th century rectangular kiln (Avon Archaeological Unit 2012, 22-25). Watching briefs during the construction of a fence between Tower Road North and the clock tower in 2008 (SGHER 18634) and shrub planting in 2011 (SGHER 19785) recovered a small quantity of industrial material – datable artefacts pre-dating Haskins pottery were scarce, implying that Champion's brass works was intentionally kept clean of domestic waste (*Ibid*, 26). Scientific analysis of industrial residues in soil samples has refined our knowledge of the exact process Champion used to smelt zinc, and shed light on the possible origins of Champion's technique and the industrial use of the buildings.

5.3 Potential heritage assets

The present car park was formerly part of the 13 acre lake created to provide water power to Champion's brass works. The lake was formed by damming the Siston Brook to the north (Atkins Heritage 2007), although it is unknown whether or not the lake bed was first dug out and ground level artificially lowered. It is therefore possible that any potential archaeological deposits may have been truncated by the creation of the lake, although prior to Champion's brass works the area appears to have been agricultural land. The lake gradually silted up during the 19th and early 20th centuries, as the first three editions of Ordnance Survey maps increasingly show the lake as marshy wetland rather than open water. Thick deposits of alluvium are thus expected to overlie pre-lake deposits.

To the south, against Tower Lane, was a row of thirteen terraced workers' houses (SGHER 14618) built by William Champion. These houses are marked on the 1841 Siston tithe map and stood until c 1968, when they were demolished by the council to make way for Tower Lane. The foundations of these workers' houses may survive and it is possible that their northern extent lies within the site boundaries.

There is an unknown potential for earlier prehistoric archaeology on the site and a low potential for later prehistoric and Roman archaeology, given the limited amount of known activity from these periods in the wider study area. Whilst there is the possibility of settlement alongside the Roman road (SGHER 1353), the site is over 500m from the road.

Based on cartographic evidence, there is a low potential for medieval and early post-medieval archaeology, other than that related to agricultural land use. Any potential deposits pre-dating the

brass works may have been truncated by the lake or preserved below thick alluvium. In addition to the possible foundations of the workers' houses, there is a moderate potential for the presence of archaeological assets related to unrecorded aspects of the brass works, as no maps of the site pre-dating 1841 are known.

5.3.1 1841 tithe plan

The site lies almost completely within the lake associated with the former brass works, except for the southernmost protrusions, which seemingly lay either side of a row of thirteen terraced houses. To the south of the terrace are depicted a row of smaller buildings and possible allotment or garden strips. The northern and southern car park boundaries roughly correspond to the lake edges.

5.3.2 1st edition 1882 Ordnance Survey

Few changes are seen between 1841 and 1882. A statue has been recorded in the northern half of the lake and depictions of vegetation within the northern end of the lake implies that it had begun to silt up, or at least become overgrown (Fig 3).

5.3.3 1904 Ordnance Survey

The extent of the lake remains unchanged, as does the vegetation or partial infilling at its northern end. A greater level of detail is included in this map, which shows that the terraced houses have small yards to the north, against the lake edge, and gardens or yards to the south. A path or trackway is shown between the terraced houses, seemingly along the line of the present Tower Lane, and the row of smaller buildings to the south has disappeared. A possible boundary wall is also marked just north of the lake and terraced houses. It is notable that the northern boundary of the houses appears to be preserved in the current line of trees along the southern edge of the car park.

5.3.4 1915 Ordnance Survey

Whilst the extent of the lake remains unchanged, a greater area of the lake is now marked as marshy wetland rather than open water, including the section of lake adjacent to the terraced houses. No other changes are seen in the area of the site (Fig 4).

5.3.5 1960 Ordnance Survey

No remnant of the lake is shown, implying that it has either naturally or deliberately been filled in. The row of terraced houses is still present, although the small scale of the map means that details are not shown.

6 Assessment of the significance of heritage assets

6.1 Designated assets

6.1.1 Scheduled ancient monument

By definition scheduled ancient monuments are of the greatest importance at a national level. The listing description for Warmley brass works states that its significance resides in being the first place to integrate the production of copper, brass and zinc and undertake all processes for the production of brass on one site (Historic England 2017). It also contains nationally and internationally significant archaeological remains, such as the only recorded brass works cementation furnace in Europe (*Ibid*) and the oldest surviving industrial zinc smelter in Britain (Avon Archaeological Unit 2012, 67). Champion was one of the earliest industrialists to build housing for his workers and was an early proponent of the Newcomen engine (Atkins Heritage 2007, 67).

Champion's brass works have been greatly eroded and most industrial buildings lost, except for the clock tower, windmill tower and icehouse (which may have previously operated as a furnace). Warmley House and gardens have been heavily encroached upon by more recent residential developments, but other than the infilling of the lake are largely unaltered.

Setting forms part of the significance of a heritage asset and particular aspects of setting may make a positive or negative contribution to the asset's significance and appreciation (English Heritage 2011). At present, the setting of Warmley brass works predominately detracts from the heritage asset, although in places within the house and garden the impact is neutral due to the screening provided by vegetation. The maintenance of The Grange Community School playing fields as open grassland enhances the asset's setting and significance by providing similar views from the gardens to the views it was originally designed for.

6.1.2 Listed buildings

Grade I listed buildings are of the greatest importance at a national level, with grade II* and grade II buildings typically being of greater regional and local significance. Warmley House is grade II*, the middle category of listings, and all other listed buildings near to the site are grade II, the third and lowest tier.

Warmley House (SGHER 1429) is of considerable historical significance as the home of William Champion, built in the mid-18th century along with a landscape garden and brass works. The preservation of Warmley House gardens and features within it enhance the significance of the house, as it is part of the original setting within which the house was built. The loss of Champion's industrial complex, infilling of the lake and construction of Kingsway Mobile Park has had a negative impact on the setting and significance of Warmley House.

The grade II listed grotto (SGHER 12634), state of Neptune (SGHER 1429), summerhouse (SGHER 1425) and garden gateway (SGHER 12786) are significant for their link to Champion and his brass works, as well as being important features of Warmley House gardens. The grotto and Neptune statue were built using industrial waste products, slag and clinker, which is highly unusual and an important aspect of their significance. Setting is also a valuable aspect of these assets, although the summerhouse and statue of Neptune lost the most valuable feature of their settings when the lake was filled in. The original setting of the statue has also been eroded by the construction of Kingsway Mobile Park immediately to the south.

Attached to the Dalton Young Building are the grade II listed windmill tower (SGHER 1430) and icehouse (SGHER 12635). The icehouse was one of the largest in the country and may have originally been used as a zinc smelting furnace. To the east, facing Tower Road North is the clock tower that was originally built as a pin factory (SGHER 12637). All three buildings are significant for being rare survivors of Champion's brass works, although their original settings have largely been lost and the present car park of the development site and that around the clock tower detract from the appreciation of these heritage assets.

Given the distance and lack of visibility between the site and nine grade II listed houses (SGHER 6475, 14949-50, 15873, 15950-3, 15981) and war memorial (SGHER 15066) along the High Street, Warmley, it is deemed unnecessary to consider the individual significance and settings of these locally important heritage assets in any further detail, as doing so would not contribute to the aims of this assessment.

6.1.3 Conservation Area

Warmley Conservation Area has particular historic significance as the site where William Champion first pioneered the commercial production of zinc in Europe. It is also important for being "the only remaining 18th century integrated industrial complex in the country to have encompassed a full range of industrial processes from the smelting of metal to the production of finished goods" and is "a rare example of an 18th century industrialist's garden... [that] includes many unusual features, some of which were constructed with recycled waste from the works" (SGC 1997a, 1). Consequently, Warmley Conservation Area is of national significance as it was at the forefront of industrial innovation during the mid-late 18th century.

Industrial developments during the 19th and 20th centuries resulted in the heavy loss of industrial buildings within Champion's brass works and the southern portion of the infilled lake is now

occupied by Kingsway Mobile Park, which detracts from the house and garden's settings. Conversely, the parkland style views from Warmley House and gardens to the open area of The Grange Community School playing fields are considered to make an important contribution to the setting of the Conservation Area (SGC 1997a, 6). The north-east and southern extents of the Conservation Area, containing 20th century housing and industrial units respectively, contain little of the historic character that this designation seeks to protect.

6.1.4 Registered parks and gardens

Warmley garden is "a rare survivor of a mid-18th century designed landscape garden, encroached upon but largely unaltered since 1769" (Atkins Heritage 2007, 67). As discussed above, the construction of Kingsway Mobile Park over the former lake and intrusion created by caravans on views from the garden detract from the asset's setting, as does the row of leylandii trees in the car park (SGC 1997b). The overgrowth of vegetation within the Echo Pond and (temporary) Heras fencing around the statue of Neptune are also negative aspects that detract from the heritage asset. On the other hand, the preservation of an open grassy space in front of the statue and view across the Siston Brook to the school playing fields enhance the garden's setting (SGC 1997a).

6.2 Undesignated assets

6.2.1 Historic buildings

Locally listed buildings and those historic buildings recorded separately by the HER are typically of local significance, as opposed to being of regional or national importance. Whilst the settings of such heritage assets do often contribute to their significance, the architectural character of undesignated historic buildings is usually of greater importance than setting – as is the case with the two 19th century inns along the A420 (SGHER 13174, 13224), Warmley station waiting room and goods shed (SGHER 5097, 16484) and locally listed houses around the entrance to Warmley House on Tower Road North (SGHER 14810, 14845, 16746, 17345). Exceptions to this are the three locally listed Methodist Chapels around Tower Road South (SGHER 10685-7) and buildings within Warmley gardens. The setting of Methodist chapels within a community and, for Ebenezer Church with its attached cemetery, the tranquillity and open nature of their immediate surroundings makes an important contribution to their significance. Similarly, the preservation of Warmley garden enhances the significance of the locally listed boat house (SGHER 16735) and walls (SGHER 16733-4, 16737) that are located within it.

6.2.2 Sites of archaeological interest

Nature of the archaeological interest in the site

Warmley brass works scheduled ancient monument contains considerable archaeological heritage assets. Archaeological investigations at the former brass works complex, discussed above, have shown that considerable remains of mid-late 18th and 19th century stone industrial buildings survive below modern made ground and demolition rubble. Amongst the archaeological structures so far encountered, several possible warehouses have been identified along with a kiln connected to Haskins pottery, brass cementation furnace, reverberatory furnace for smelting copper and a spelter furnace, or zinc smelter from Champion's brass works (Avon Archaeological Unit 2012). Industrial materials and residues in soil samples have been valuable in establishing the function of buildings, although datable artefacts relating to the time of Champion's brass works have so far been extremely limited (*Ibid*, 26).

The development site lies west of most previous archaeological investigations and is located over the southern edge of a former man-made lake and possibly the northern extent of a demolished row of workers' houses, the locations of which are known from multiple cartographic sources. Both the houses and lake were built during the mid-late 18th century as part of William Champion's brass works and survived into the 20th century. The infilled lake is likely to contain thick alluvial deposits and the foundations of the workers' houses are expected to remain. Whilst the locations of these features are known, the nature of deposits and survival of the terrace foundations can only be verified by intrusive archaeological investigations.

Relative importance of the archaeological interest in the site

Archaeological heritage assets within Warmley brass works, house and gardens all form part of the scheduled ancient monument and contribute to its national significance. As stand-alone features most are of local and regional importance, although the zinc smelter is currently the oldest known and only surviving example in Britain, making it of national significance (Avon Archaeological Unit 2012, 60). The terraced row that lay south of the development site is one of the earliest examples of purpose built workers' housing attached to an industrial complex in Britain (*Ibid*, 63) and is therefore of regional and potentially national importance.

The South West Archaeological Research Framework (Webster 2008) sets out an agenda for future archaeological research in the region and highlights areas requiring further work.

Archaeological deposits and artefacts on the development site have the potential to enhance our understanding of late post-medieval social provision, material culture and waste disposal. In particular, the site may also contribute to the following research aims and areas lacking archaeological investigation:

- The exploitation of water for power, transport and later the demand for clean drinking water produced spectacular changes to the landscape, which have been largely undocumented (*Ibid*, 213).
- Only one archaeological excavation on a designated park or garden has been carried out in the region (*Ibid*, 223).
- Research Aim 38(p): Continue and develop archaeological research into the industrial and social development of the Bristol region in the 17th and 18th centuries, as it forms a major element in British industrialisation (*Ibid*, 289).
- Research Aim 53: Increase our knowledge of the effects of colonialism on the region and the wider world - Bristol's connection to the slave trade is an obvious element of this (*Ibid*, 292).

The archaeological heritage assets on the present site are relatively uncommon features that have the potential to further research into industrial development, landscape change and social change. Whilst the Warmley brass works conservation management plan (Atkins Heritage 2007) considers that the terrace "foundation would probably tell us little" (*Ibid*, 50), due to the houses being surveyed by the British Industrial Archaeology Society prior to their demolition in 1968, the artefact assemblage associated with the terrace has the potential to increase our knowledge of the economic and social status of Champion's workers and their families. Considering the lack of domestic and datable artefacts so far recovered from the industrial buildings (Avon Archaeological Unit 2012, 26), the artefact assemblage that may be reasonably expected from round the terrace is likely to be a valuable addition to future research.

Physical extent of the archaeological interest in the site

Archaeological investigations across the scheduled ancient monument have shown that modern levelling deposits and demolition rubble often overlie earlier industrial archaeology. Recording of the bank north of the former Lindman Works showed that the natural geology was overlain by two layers of redeposited clay and a buried soil horizon, through which some of the stone structures were cut. Whilst the recorded bank is near to the north-eastern edge of the development area, the site is lower than the recorded bank section and modern industrial units to the east, hence the observed sequence of deposits are unlikely to extend into the development area.

The survival and extent of lake deposits is uncertain, as is the extent to which the ground was levelled or built up during the construction of the present car park. Alluvial lake deposits are presumably as thick as the original depth of the lake and will almost certainly be encountered within 0.50m of the current car park surface. These archaeological deposits are vulnerable to truncation by intrusive groundworks.

The exact nature of the terrace foundations, should they exist within the development site, can only be verified by archaeological excavation. The top of any surviving foundations are likely to be within 0.50m of the present ground surface.

Potential heritage assets

The potential for the presence of unknown heritage assets consisting of buried archaeological deposits is discussed above. Any potential earlier prehistoric archaeology found on the site is likely to be of regional and national importance given the general rarity of such archaeology, although the potential for such heritage assets being present is considered to be low. Whilst there is a low potential for later prehistoric and Roman archaeology, such assets are typically of local and regional significance. Given that any medieval and early post-medieval archaeology encountered on the site is likely to be agricultural, these potential heritage assets will probably be of local interest. Archaeological heritage assets on the development site relating to Champion's brass works will be of local and regional significance, and there is the low potential for some unknown assets to be of national importance.

7 The impact of the development

7.1 Direct impacts

The proposed development will directly affect the following heritage assets (impact has been categorised as described in Table 1):

- The impact on Warmley brass works scheduled ancient monument (NHL1015556) is classed as **moderate adverse** for the truncation of archaeological heritage assets. Scheduled monument consent will be required for the proposed development.
- Warmley Conservation Area (SGHER 20517) is assigned an impact of **not significant**, as the replacement of the present car park with mobile homes is considered to have neither a negative impact nor significantly improve the Conservation Area.
- The impact level on the registered Warmley gardens (NHL 1000356) is assigned as **not significant**, as the development site is presently outside of the publically accessible area of garden. Assuming that trees or high vegetation remains along the site's northern boundary (see recommendations below), the proposed development will not be visible from the gardens (see Plate 12).
- Potential archaeological heritage assets, including any remains of the lake and foundations of the terraced houses, are assigned an **unknown** level of impact given the current uncertainty regarding their depth and survival.

7.2 Indirect impacts

The proposed development will also have impacts of the setting of heritage assets, including those outside of the development area. Setting is intangible, qualitative and can change over time – it can be views, atmosphere and/or the connections to other heritage assets, historical events and landscape features. Particular aspects of a setting may make a positive or negative contribution to the asset's significance and appreciation (English Heritage 2011).

Designated heritage assets

- The setting of Warmley brass works scheduled ancient monument (NHL 1015556) is assigned an impact level of **not significant**. The present car park is not an original feature of Champion's brass works, so its loss will not have an adverse impact on the monument. Extending Kingsway Mobile Park may result in a partial loss of clarity of the scheduled ancient monument boundary, as the boundary currently runs below the southernmost caravan. Conversely, the land immediately south of the development site was originally occupied by housing, so placing mobile homes on the site may be considered as a partial return to the area's original use, in

function if not form. These minor impacts are not considered to have an overall positive or negative significance though.

- The impact on the setting of Warmley Conservation Area (SGHER 20517) is considered to be **minor adverse**. The South Gloucestershire Council advice note for the Conservation Area considers Kingsway Mobile Park to have a negative impact on the setting of Warmley gardens and to be an obstruction to the restoration of the lake (SGC 1997a).
- The grade II registered Warmley gardens (NHL 1000356) is assigned an impact level of **minor adverse** for the same reasons as the Conservation Area. Quietness and tranquillity are often important aspects of the setting of registered parks and gardens, and it is notable that although Warmley House gardens were originally adjacent to the brass works, the main aspect of the garden was designed to face away from the industrial complex. In terms of noise, the replacement of the present car park with mobile homes is likely to be similar, if not a slight improvement. Should the recommendations below be made, then the impact on the registered garden has the potential to be beneficial.

Listed buildings

- Warmley House (SGHER 1432 – grade II*) is assigned an impact level of **not significant** as the site is screened by vegetation close to the house and in the gardens (Plates 2-3).
- The windmill tower (SGHER 1430) is assigned an impact level of **not significant**. Whilst mobile homes are arguably of greater aesthetic appeal than the present car park and will potentially result in reduced noise disturbance, views to and from the windmill are not an important aspect of the windmill's setting and significance due to the absence of windows in the tower (with the exception of one slatted opening) (Plates 4-5). Should the recommendations below be made, the development may have a beneficial impact on the windmill tower.
- The statue of Neptune (SGHER 1429) is assigned an impact level of **not significant**. The site has no visual impact on the statue's setting, due to a lack of inter-visibility, and neither the loss of the car park nor proposed development will result in the further loss or restoration of the heritage asset's original setting (Plate 6).
- The icehouse (SGHER 12635) is assigned an impact level of **not significant** as it has no direct line of sight to the proposed development, although its subterranean location means that views to or from the icehouse do not form an important part of its setting or significance. The original surroundings of the icehouse have been significantly eroded – replacing the present car park with mobile homes will not alter this. Should the recommendations below be made, the development has the potential to have a beneficial impact on the icehouse's setting.
- The grotto (SGHER 12634) within Warmley gardens is assigned an impact level of **not significant** as the site is not visible from the grotto due to topography and other garden features.
- Warmley summerhouse (SGHER 1425) is assigned an impact level of **not significant** due to the lack of visibility between the site and summerhouse c 370m to the north (Plate 7).
- The garden gateway (SGHER 12786) is assigned an impact level of **not significant** as the site is not visible from the gateway due to topography and other garden features.
- The clock tower (SGHER 12637) is assigned an impact level of **not significant** as modern industrial units block the view towards the development site (Plate 8).
- Warmley House gates (SGHER 12636) are assigned an impact level of **not significant** due to the lack of visibility between the gates and site. The gates lies c 160m north-east of the site on the opposite side of Warmley House.

-
- The settings of the nine grade II listed houses (SGHER 6475, 14949-50, 15873, 15950-3, 15981) and war memorial (SGHER 15066) along the High Street, Warmley are assigned an impact of **not significant**, due to the distance of over 500m and lack of visibility between the site and heritage assets.

Undesignated heritage assets

- Locally listed buildings within Warmley House gardens (boat house, pond wall and garden walls (SGHER 16733-5, 16737)) are assigned an impact level of **not significant**. The site is not visible from any of these assets except for garden wall SGHER 16737, which forms the eastern boundary of Kingsway Mobile Park and ends at the proposed development site (Plates 9-10). As long as the wall is physically undamaged by the development, replacing the car park with mobile homes will not have a negative impact on the wall or restore any of its original setting.
- Locally listed buildings in the wider study area (two inns, station waiting room, goods shed, houses, three Methodist chapels and cemetery (SGHER 13174, 13224, 5097, 16484, 14810, 14845, 16746, 17345, 10685-7)) are all assigned an impact level of **not significant** due to their settings being visually and audibly unaffected by the proposed development. Tranquillity is an important aspect of the three Methodist chapel settings, although the nearest chapel is over 100m away and has no direct line of sight to the proposed development, which is unlikely to increase noise pollution anyway.
- The Echo Pond (SGHER 19813) within Warmley House gardens and sluice at the edge of the former lake (SGHER 19920) are both assigned an impact level of **not significant** as the site is not visible from the pond and sluice due to topography and vegetation (Plate 10).
- The prospect mound (SGHER 18513) within Warmley House gardens is assigned an impact level of **minor adverse**, as the visual setting of the mound is integral to its function and the proposed development will be a great visual intrusion than the present car park. At present the impact of the car park is reduced by a tall line of evergreen trees (Plates 11-12), should similar screening remain (see recommendations below) then the impact of the development on this heritage asset can be mitigated to not significant.

Implementation of the mitigation proposed below should ensure that there are no residual indirect effects on the historic environment from the proposed development. Mitigation should ensure that adverse impacts are restricted in scope to not significant.

8 Recommendations

The historic environment is a non-renewable resource and therefore cannot be directly replaced. In order to mitigate the impacts identified above, the following actions are recommended:

1. Screen the development from Warmley gardens through a tree line or border of high shrubs along the northern site boundary. This would reduce the minor adverse impact on the prospect mound to not significant and ensure that the level of impact on the gardens remained as not significant.
2. Screen the development from the windmill tower by keeping the current tree line along the site's western boundary and planting a hedge or shrubs to screen the site at ground level.
3. Create two visible public rights of way across the site, one connecting Kingswood Heritage Museum to Warmley gardens and the second along the eastern site boundary, between Tower Lane and Warmley gardens. Improving links between the windmill, icehouse, museum and gardens, along with increase public access to and awareness of the gardens and heritage assets are desired enhancement strategies proposed by South Gloucestershire Council to improve Warmley Conservation Area and registered garden (SGC 1997a; SGC 1997b). Should the suggested additional footpaths be established, the development would have a beneficial impact on Warmley gardens, Warmley Conservation Area, the icehouse and windmill tower.

4. An archaeological evaluation in advance of intrusive groundworks associated with the proposed development, to determine the nature, depth, survival and location of archaeological heritage assets and general stratigraphy of the site, should scheduled monument consent be given for the development. Depending on the results of the archaeological evaluation, a watching brief of intrusive ground works undertaken during the development's construction may be appropriate. Whilst the development may result in the loss of some archaeological heritage assets, mitigation through archaeological recording and investigation produces an important research dividend that can be used to better understand the area's history and contribute to local and regional research agendas (DCLG 2012, section 141).

The scope and specification of mitigation works are dependent on the granting of scheduled monument consent and will be agreed with Hugh Beamish (Inspector of Ancient Monuments, Historic England) and Paul Driscoll (Archaeology and HER Officer, South Gloucestershire Council).

Any investigation work or watching brief required must result in the production of an archaeological report (and appropriate publication) to be deposited for public consultation with the South Gloucestershire HER and a project archive to be deposited at a local museum.

9 Publication summary

Worcestershire Archaeology has a professional obligation to publish the results of archaeological projects within a reasonable period of time. To this end, Worcestershire Archaeology intends to use this summary as the basis for publication through local or regional journals. The client is requested to consider the content of this section as being acceptable for such publication.

A desk-based assessment was undertaken on behalf of EJ Planning Ltd at Kingsway Mobile Park, Warmley, Bristol (NGR ST 66840 72775).

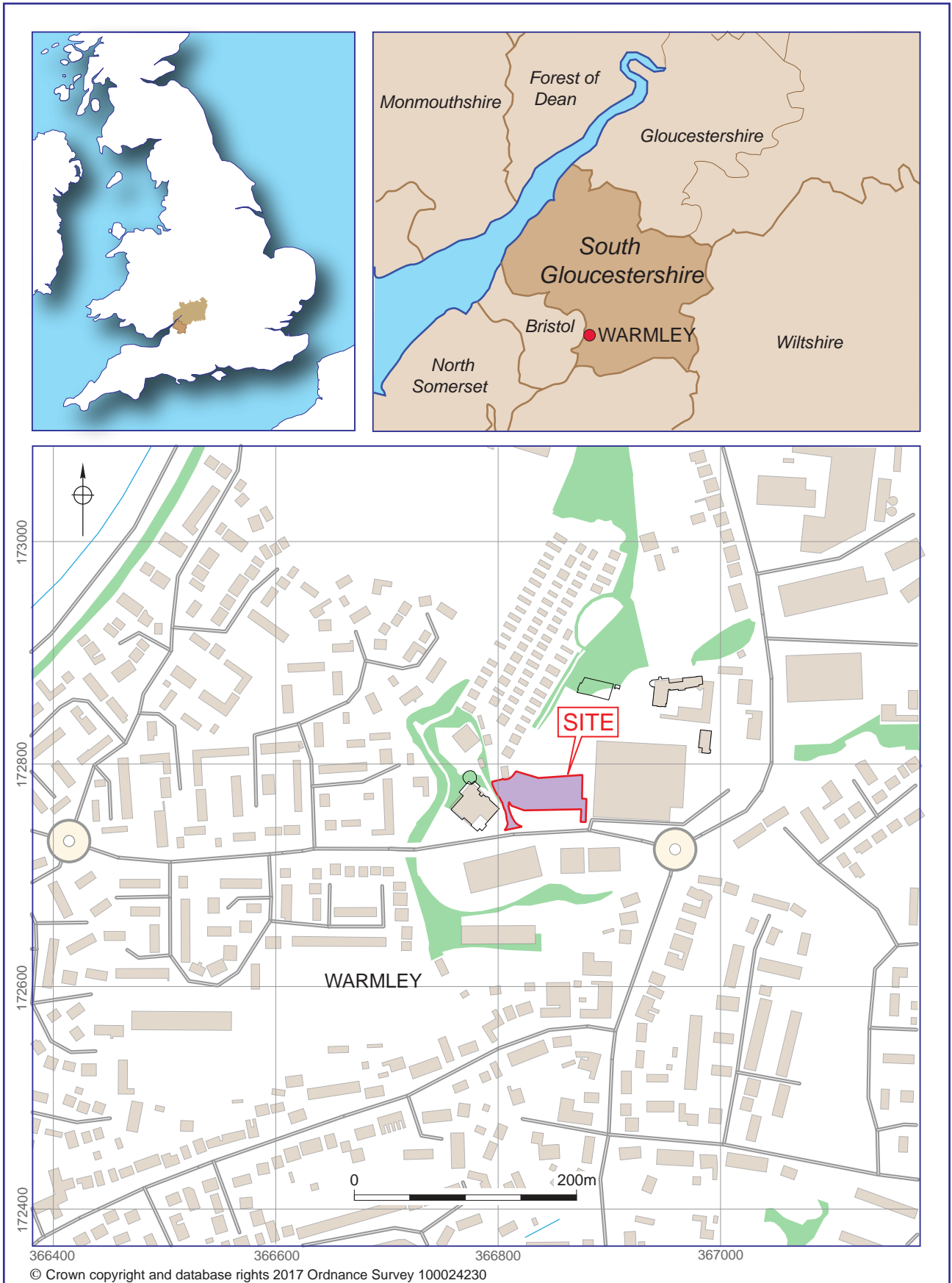
The site is currently a car park. It formerly lay on the western side of William Champion's 18th century brass works, and to the south of Warmley House and landscape garden. Cartographic evidence shows that the site was occupied by the southern extent of a man-made lake associated with the industrial complex. Along the southern boundary, the site may also include the northern edge of a row of terraced houses built by Champion for his workers. The terrace was demolished in 1968 although the foundations and associated artefacts may survive.

The site lies within Warmley brass works scheduled ancient monument, Warmley Conservation Area and registered garden. Consequently, the proposed development will require scheduled monument consent. In most cases, the impact of the development on heritage assets is considered to be not significant. Recommendations have been made of how to mitigate any potentially negative impacts.

10 Acknowledgements

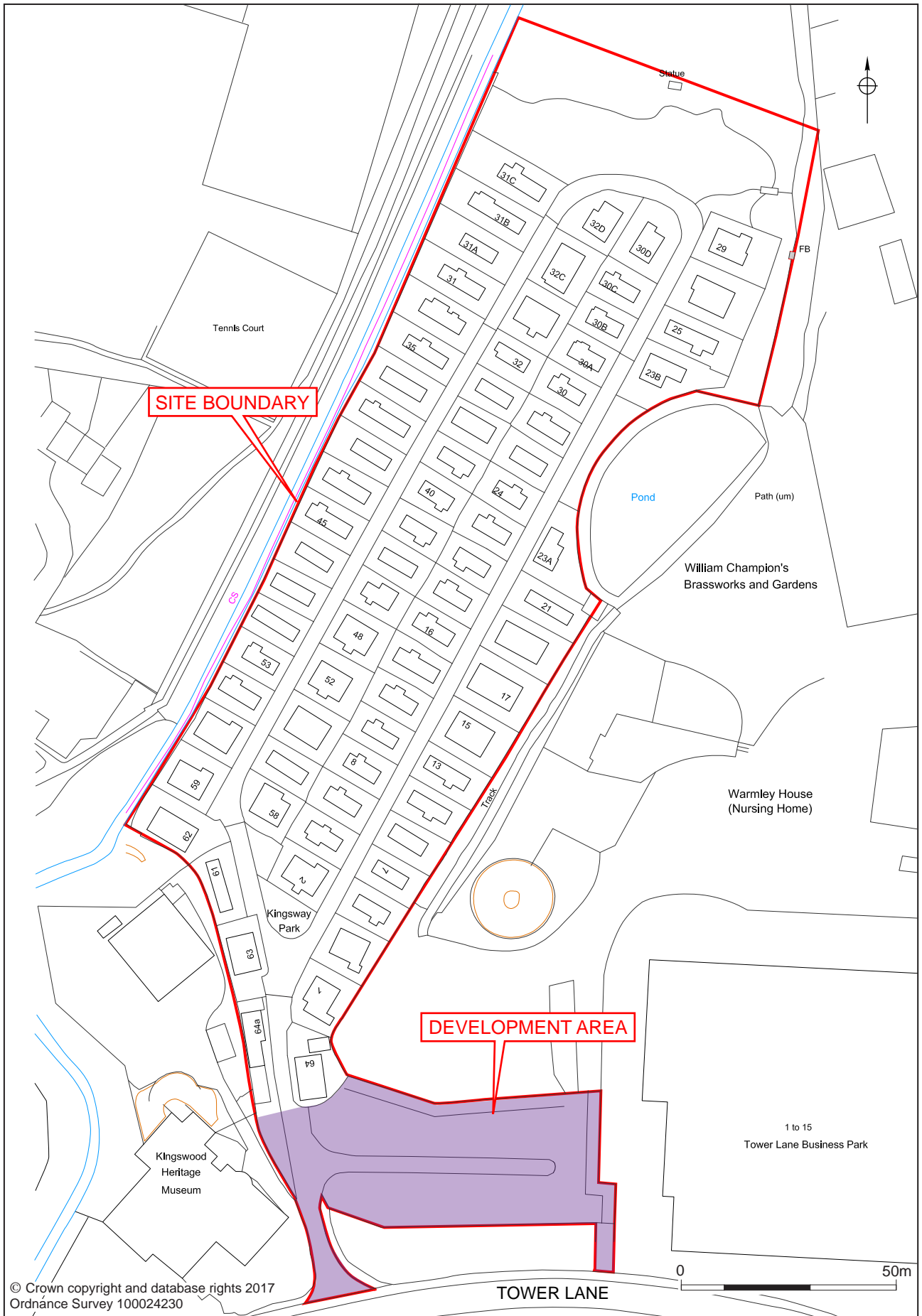
Worcestershire Archaeology would like to thank the following for their kind assistance in the successful conclusion of this project, Kingsway Mobile Park, Ben Eiser (EJ Planning Ltd) and Paul Driscoll (Archaeology and HER Officer, South Gloucestershire Council).

Figures



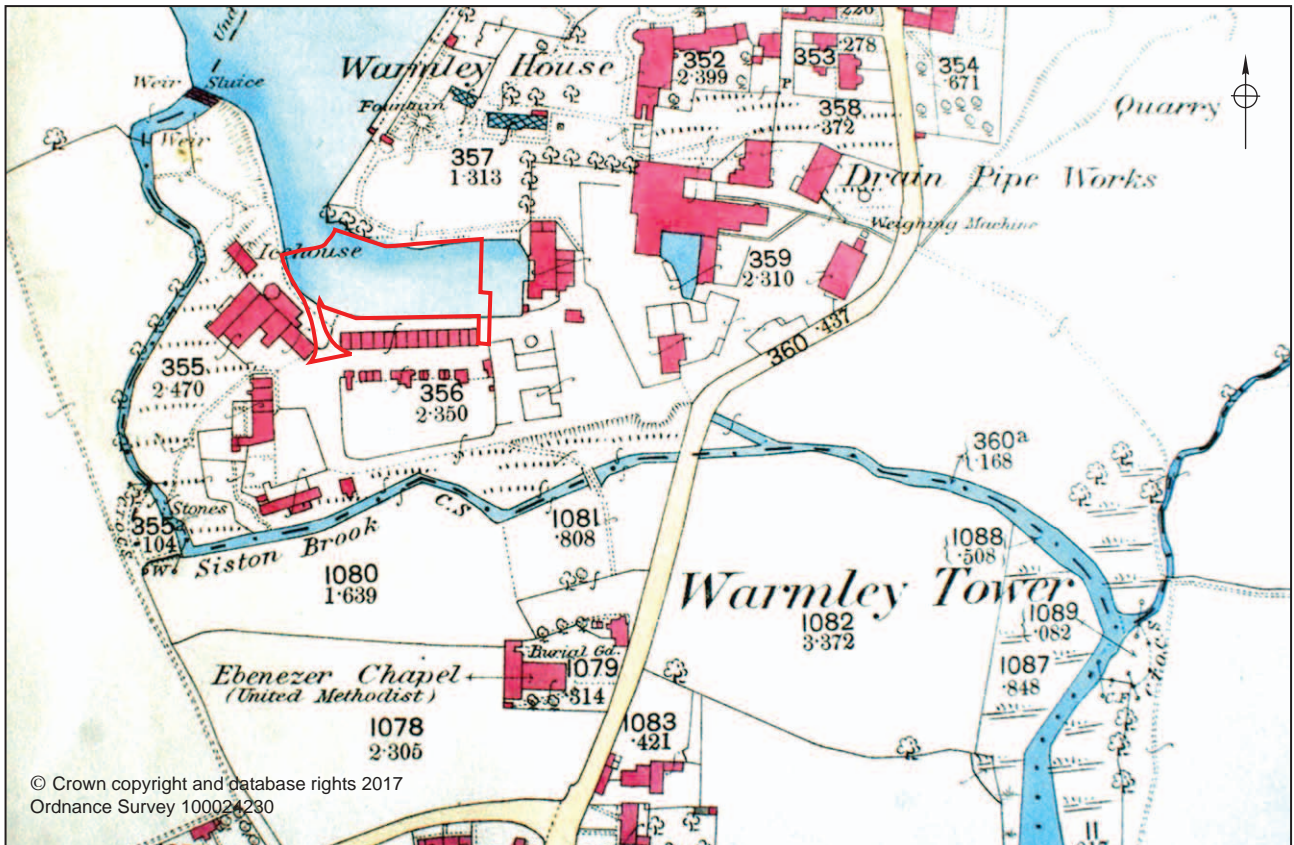
Location of the site

Figure 1



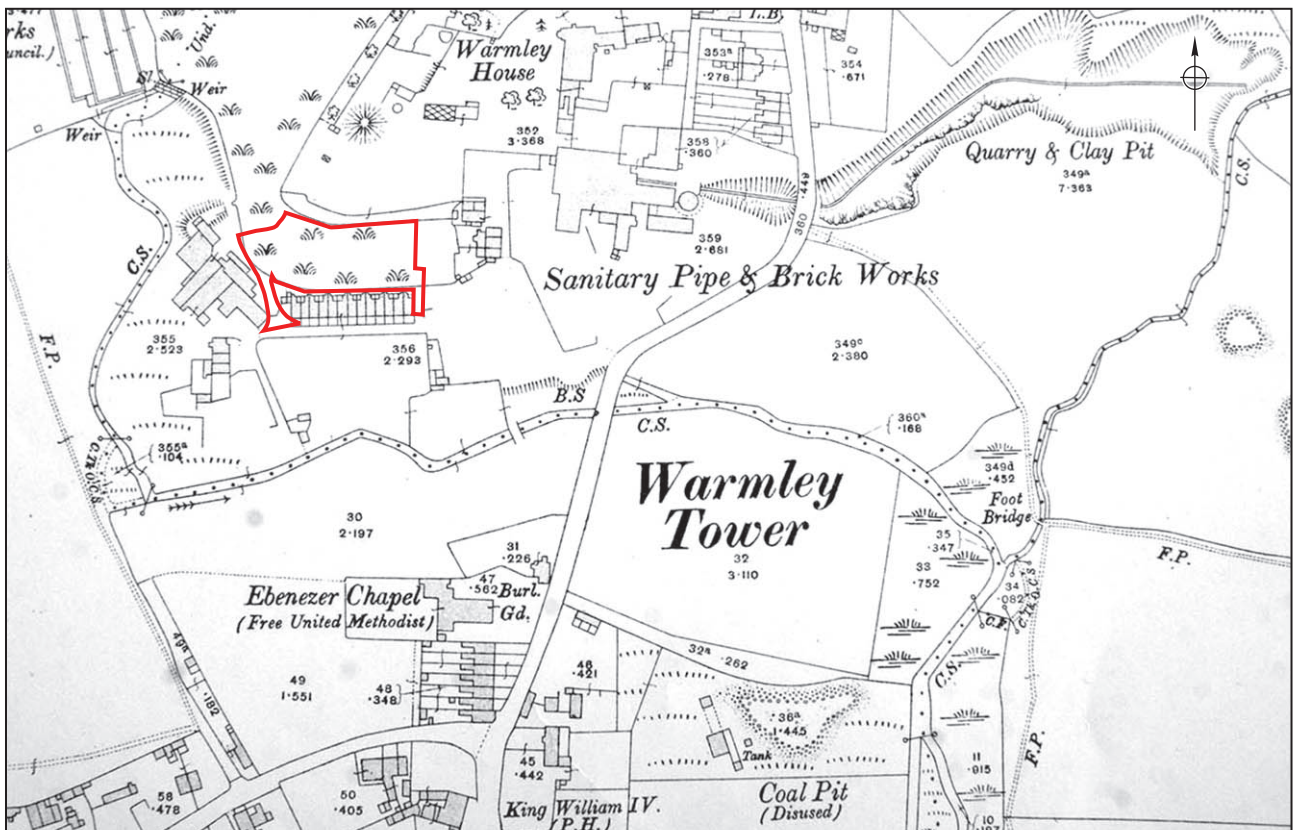
Location of the development area

Figure 2



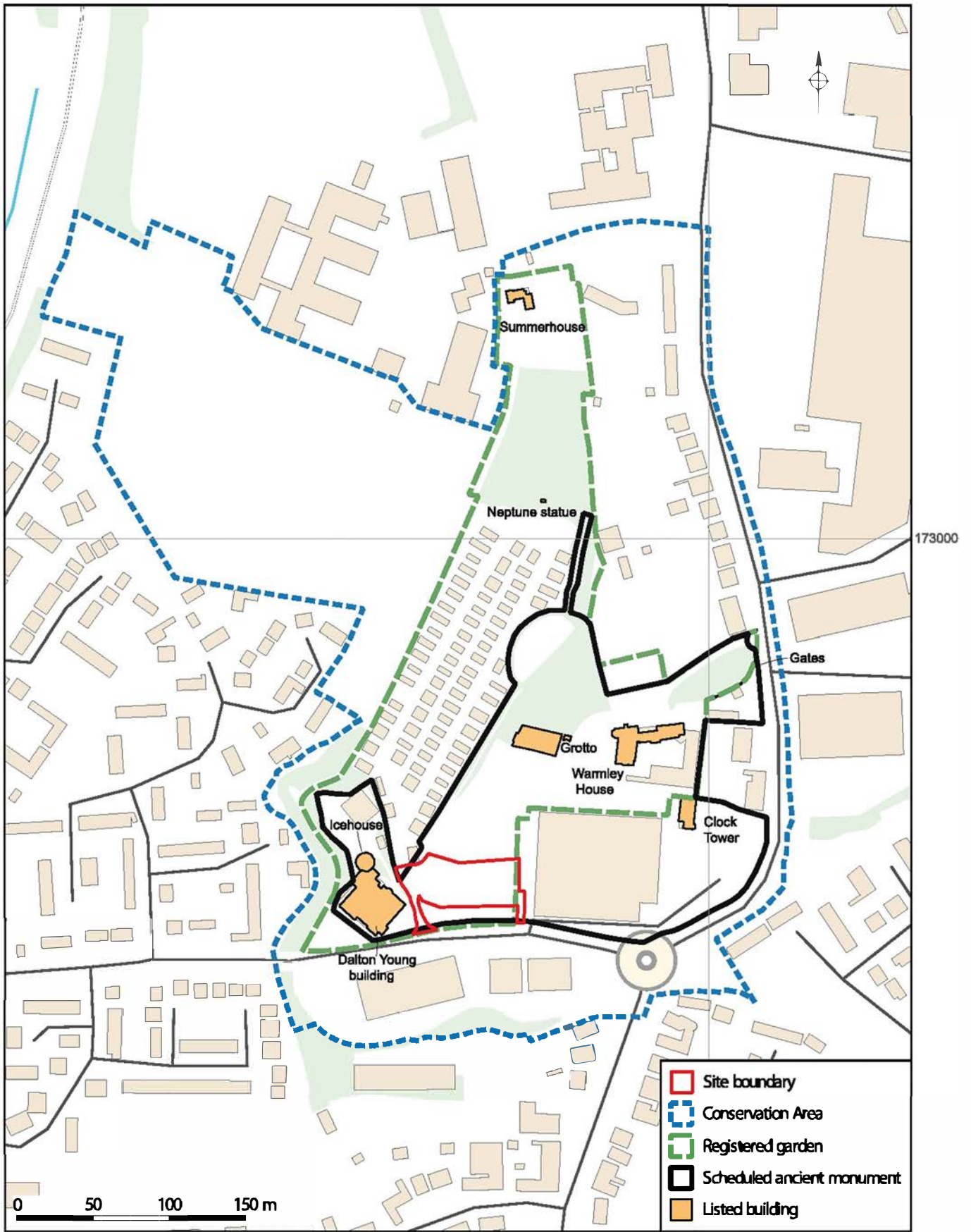
Extract of 1882 1st edition OS map showing location of development site

Figure 3



Extract of 1915 OS map showing location of development site

Figure 4

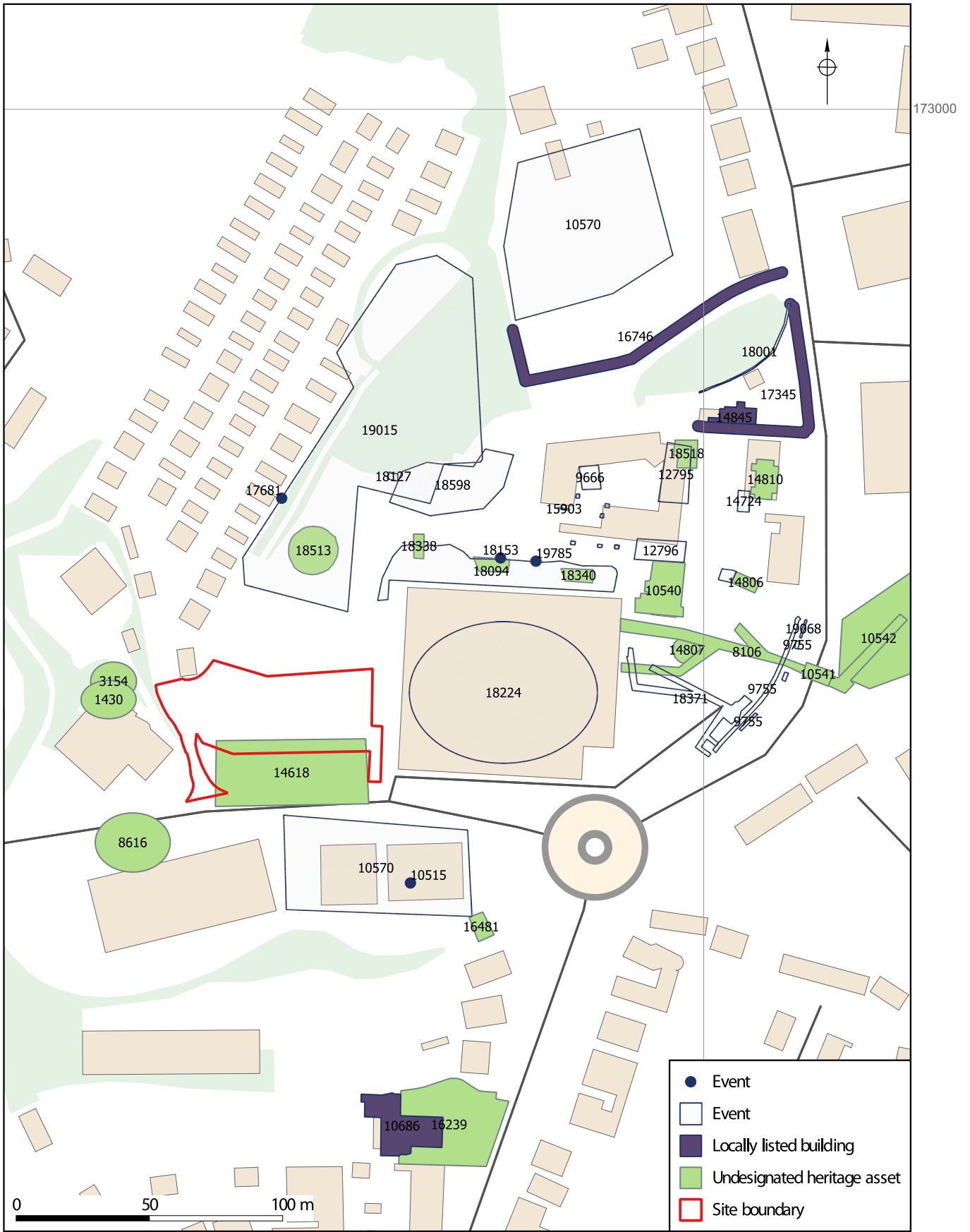


Contains OS data © Crown copyright and database right 2017

367000

Designated heritage assets

Figure 5



Contains OS data © Crown copyright and database right 2017

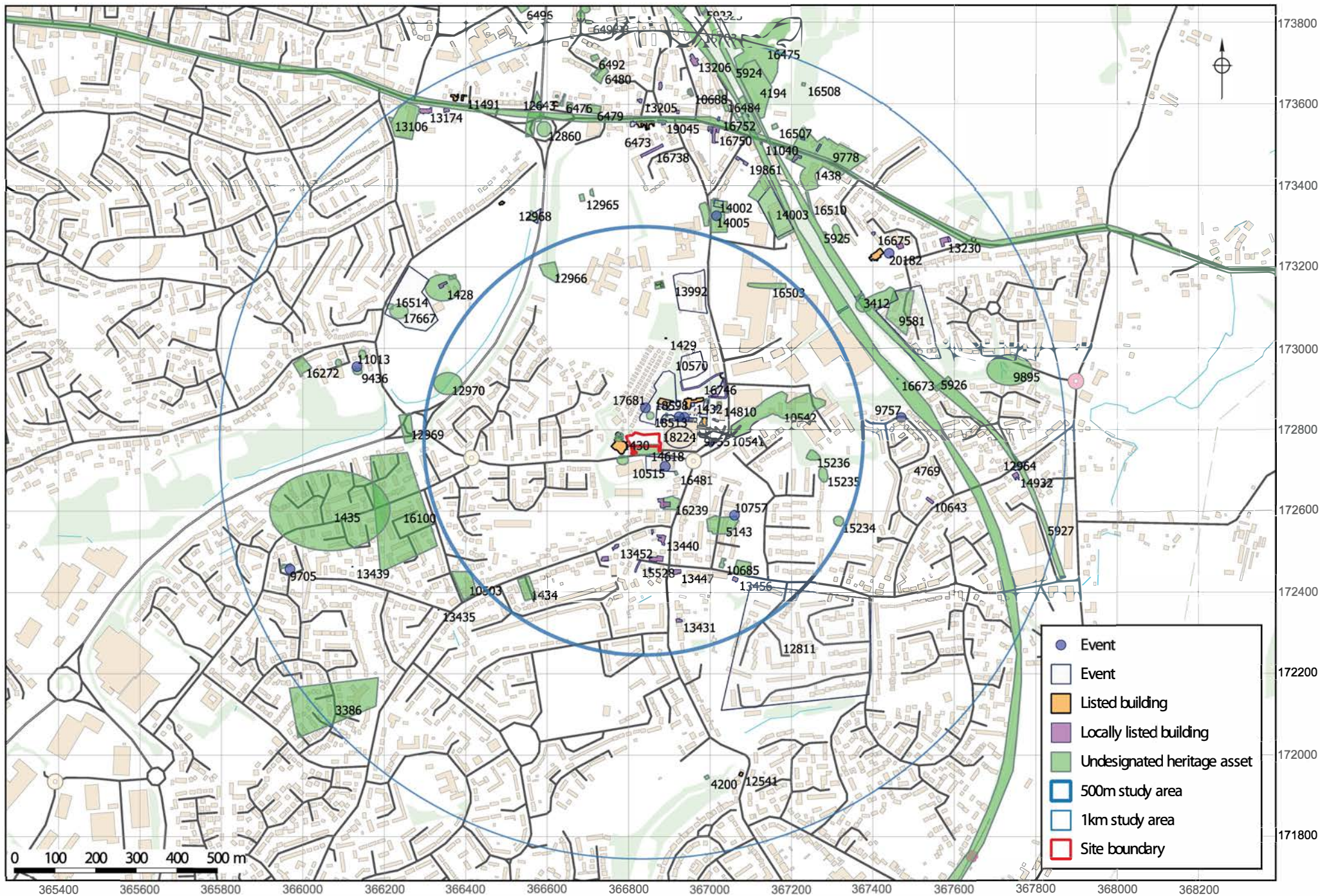
367000

HER events and monuments near to the site

Figure 6

HER events and monuments in the wider study area

Figure 7



Plates



Plate 1: Development site – photograph facing north-east



Plate 2: Warmley House (SGHER 1432) with screening vegetation to west – photograph facing east



Plate 3: Screening vegetation in gardens between Warmley House (SGHER 1432) and the site – photograph facing north-east



Plate 4: Windmill tower (SGHER 1430) as seen from site – photograph facing south-west



Plate 5: View of site from base of windmill tower (SGHER 1430) – photograph facing north-east



Plate 6: Neptune statue with Kingsway Mobile Park to south (SGHER 1429) – photograph facing north-west



Plate 7: Summerhouse and vegetation to south (SGHER 1425) – photograph facing north-west



Plate 8: Clock tower with modern industrial units behind, facing west towards site (SGHER 12637)



Plate 9: End of locally listed garden wall on northern boundary of development site (SGHER 16737) – photograph facing north



Plate 10: Warmley gardens looking south-west towards the site. Overgrown Echo pond (SGHER 19813) and pond wall (SGHER 16733) are on the right with the boat house (SGHER 16735) to the far end of the pond



Plate 11: Prospect mound (SGHER 18513) – photograph facing north-east



Plate 12: View from prospect mound (SGHER 18513) towards the development site. Note tree line between garden and site screening present car park – photograph facing south

Appendix 1 Heritage assets registered with the Historic Environment Record (those within the application site are highlighted)

HER number	Site name	Location (easting, northing)	Monument type	Date
1353	Roman Road Bitton Berkeley South	368309, 175409	Road	Roman
1425	Summerhouse Warmley House Tower Road North Warmley Siston	366877, 173156	Summerhouse	Post medieval
1426	Coal Mine (1) Grimsbury Pit Grimsbury Lane Oldland	366568, 173323	Colliery	Post medieval
1428	Enclosure The Old Grange Grimsbury Farmhouse Baden Road Warmley Oldland	366344, 173149	Enclosure	Later prehistoric
1429	Neptune Statue Warmley Garden Tower Road North Warmley		Statue	Post medieval
1430	Windmill Warmley Brassworks Tower Lane Warmley Siston	366777, 172779	Windmill	Post medieval
1432	Warmley House Tower Road North Warmley Siston		House	Post medieval
1433	William Champions Brassworks Warmley Siston (Scheduled Monument)		Brass works	Post medieval
1434	Colliery Cadbury Heath (Brook) Colliery Cadbury Heath Road Cadbury Heath Oldland	366551, 172411	Colliery	Post medieval
1435	Round Barrow Lower Barrs Court Oldland	366066, 172602	Round barrow	Bronze age
1438	Colliery Crown Colliery South Springfield Farm London Road Warmley Siston	367259, 173438	Colliery	Post medieval
2295	Colliery Siston Common Colliery Siston	366902, 173889	Colliery	Post medieval
2301	Hole Lane Copper Works Mill Lane Warmley Tower Oldland	367079, 172459	Copper works	Post medieval
3154	Cementation Furnace Dalton Young Building Tower Lane Warmley Siston	366779, 172786	Furnace	Post medieval
3386	Rabbit Warren The Conygre Barrs Court Oldland	366076, 172117	Rabbit warren	Post medieval
3412	Tramway Bridge Norman Road Warmley Siston		Bridge	Post medieval
3413	Tramway Bridge St Ivel Way Warmley Siston		Bridge	Post medieval
3414	Culvert Avon and Gloucs Railway Warmley Siston	367571, 172913	Culvert	Post medieval
4194	Hollybrook Brick Company Brickworks London Road Warmley Siston	367110, 173637	Brickworks	Post medieval
4195	Colliery Tenniscourt Road Warmley Kingswood		Colliery	Post medieval
4200	Brook Coal Mine Cowhorn Hill Warmley Oldland	366992, 171946	Colliery	Post medieval

HER number	Site name	Location (easting, northing)	Monument type	Date
4252	Registered Garden Warmley House Tower Road North Warmley Siston		Garden	Post medieval
4769	Railway Line Midland Railway Mangotsfield Bitton (Bath)	367259, 172224	Railway	Post medieval
5097	Station Building Warmley Station High Street Warmley Siston		Waiting room	Post medieval
5143	Goldney Pit Tower Road South Warmley Tower Oldland	367031, 172566	Colliery	Victorian
5922	Dramway Hobbs Lane to Norman Road Crossing Siston Common	366883, 173997	Tramway	Post medieval
5923	Dramway Norman Road Crossing to Norman Road Bridge Siston Common	366968, 173867	Tramway	Post medieval
5924	Dramway Norman Road Bridge to London Road Warmley	367064, 173672	Tramway	Post medieval
5925	Dramway London Road to St Barnabas Church Warmley	367256, 173321	Tramway	Post medieval
5926	Dramway St Banabas Church to Poplar Road Oldland Common	367563, 172920	Tramway	Post medieval
5927	Dramway Poplar Road to Southway Road Oldland Common	367815, 172571	Tramway	Post medieval
6425	Cidermill Farm Deanery Road Warmley Kingswood	366571, 173551	Farm	Post medieval
6455	Cottages Deanery Road Warmley Kingswood	366579, 173613	House	Post medieval
6473	Old London Road Bristol to Warmley Kingswood	367498, 173295	Road	Post medieval
6475	No 33 Deanery Road Warmley Kingswood		House	Post medieval
6476	No 35 Deanery Road Warmley Kingswood	366636, 173611	House	Post medieval
6477	The Grange No 37 Deanery Road Warmley Kingswood (Rejected LLB)		House	Post medieval
6478	No 39 Deanery Road Warmley Kingswood	366655, 173595	House	Post medieval
6479	Smithy Deanery Road Warmley Kingswood	366713, 173588	Blacksmiths workshop	Post medieval
6480	Firework Farm Warmley Kingswood	366729, 173683	Building	Post medieval
6481	House Brook Road Warmley Kingswood	366507, 173863	House	Post medieval
6491	Pumpshaft 33 Deanery Road Warmley Kingswood	366624, 173620	Pump	Post medieval
6492	Building Firework Farm Warmley Kingswood	366717, 173714	Building	Post medieval
6493	Building Firework Close Warmley Kingswood	366703, 173801	Building	Post medieval
6494	Coal Mine Shaft (2) Firework Close Warmley Kingswood	366683, 173817	Mine shaft	Post medieval
6495	Coal Mine Shaft (1) Firework Close Warmley Kingswood	366693, 173834	Mine shaft	Post medieval
6496	Building Brook Road Warmley Kingswood	366539, 173840	Building	Post medieval

HER number	Site name	Location (easting, northing)	Monument type	Date
8106	Tramway Tower Road North Warmley Siston	367023, 172796	Tramway	Post medieval
8616	Soakaway Tower Lane Warmley Siston	366786, 172725	Structure	Post medieval
9436	Coal Mine Shaft (1) Cock Road Wraxall Road Oldland	366134, 172944	Mine shaft	Post medieval
9634	Lower Barrs Court Farmhouse (De Listed building) Oldland	365959, 172465	Farm	Medieval
9778	Colliery Crown Colliery North Springfield Farm London Road Warmley Siston	367295, 173489	Colliery	Post medieval
9895	Coal Mine Francis Way Bridgegate Siston	367735, 172947	Colliery	Post medieval
10503	Cadbury Heath Primary School (Demolished LLB) Cadbury Heath Oldland	366396, 172417	School	Post medieval
10540	Office Warmley Brassworks Tower Road North Warmley Siston	366984, 172820	Office	Post medieval
10541	Tunnel Tower Road North Warmley Siston	367043, 172788	Tramway	Post medieval
10542	Clay Pit Warmley Pottery Tower Road North Warmley Siston	367167, 172838	Clay pit	Post medieval
10643	Unity Methodist Church The Old Chapel Poplar Road North Common Oldland		Methodist chapel	Post medieval
10685	Methodist Church Mill Lane Warmley Tower Oldland	367031, 172472	Methodist chapel	Post medieval
10686	Ebenezer Methodist Church Tower Road South Warmley Oldland		Methodist chapel	Post medieval
10687	Wesley Chapel Tower Road South Warmley Tower Oldland		Methodist chapel	Post medieval
10688	Congregational Church Chapel Lane Warmley Siston	366952, 173629	Congregational chapel	Post medieval
11040	Signal Box High Street Warmley Siston		Signal box	Post medieval
11094	Barn Stonehill Farm (relocation) Grimsbury Farm Baden Road Warmley Oldland	366367, 173175	Barn	Post medieval
11490	The Yews No 3 Deanery Road Warmley Kingswood		House	Post medieval
11491	No 5 Deanery Road Warmley Kingswood		House	Post medieval
12541	No 4 Cowthorn Hill Oldland		House	Post medieval
12613	St Barnabas Church Church Avenue Warmley Siston		Church	Post medieval
12616	Apex House High Street Warmley Siston		House	Post medieval
12617	The Roselands No 8 High Street Warmley Siston		House	Post medieval
12618	Shetland Villa No 10 High Street Warmley		House	Post medieval

HER number	Site name	Location (easting, northing)	Monument type	Date
12619	The Laurels No 12 High Street Warmley Siston		House	Post medieval
12620	Milestone Church Avenue London Road Bridgegate		Milestone	Post medieval
12634	Grotto Warmley House Tower Road North Warmley Siston		Garden building	Post medieval
12635	Icehouse Warmley House Tower Road North Warmley		Icehouse	Post medieval
12636	Gates Warmley House Tower Road North Warmley Siston		Gate	Post medieval
12637	Slab Warmley Tower Tower Road North Warmley Siston		Pin factory	Post medieval
12638	Dalton Young Building Tower Lane Warmley Siston		Factory	Post medieval
12783	No 66 Baden Road Oldland Kingswood (Listed under Kingswood)		House	Post medieval
12786	Gateway Kitchen Garden Warmley House Tower Road North Warmley Siston		Garden feature	Post medieval
12860	Drainage System Deanery Road Warmley	366593, 173539	Drain	Post medieval
12965	Coal Mine (2) Grimsbury Pit Grimsbury Lane Oldland	366686, 173371	Colliery	Post medieval
12966	Colliery Grimsbury Pit Grimsbury Lane Oldland	366605, 173188	Colliery	Post medieval
12969	Drainage Level Deanery Road Warmley Oldland	366254, 172804	Drainage level	Post medieval
12970	Pumping Engine (section of) Avon Ring Road Grimsbury Pit Oldland	366356, 172914	Findspot	Post medieval
13099	Quarry St Ivel Way Church Avenue Warmley Siston	367409, 173120	Quarry	Post medieval
13100	Roman Road Excavated Section Church Avenue Warmley Siston	367467, 173087	Road	Roman
13106	Pound Grimsbury Road Kingswood	366216, 173561	Pound	Post medieval
13162	No 2 Deanery Road Warmley Kingswood		Building	Post medieval
13174	The Tennis Court Inn Deanery Road Warmley Kingswood		Inn	Post medieval
13205	No 1 Stanley Road Warmley Siston		House	Post medieval
13206	Warmley Mills Chapel Lane Warmley Siston		Factory	20th century
13212	Schoolmasters House No 64 London Road Warmley Siston		House	Post medieval
13219	No 42 to 44 High Street Warmley Siston		House	Post medieval
13222	Smithy Springfield Farm London Road Warmley Siston		Blacksmiths workshop	Post medieval
13223	Managers House Crown Colliery Crown Cottage London Road Warmley Siston		House	Post medieval

HER number	Site name	Location (easting, northing)	Monument type	Date
13224	Midland Railway Hotel (Midland Spinner Inn) London Road Warmley Siston		Inn	Post medieval
13225	Engine House Springfield Farm London Road Warmley Siston (Demolished LLB)		Engine house	Post medieval
13226	Chimney Crown Colliery (Demolished LLB) London Road Warmley Siston		Chimney	Post medieval
13230	School 12 13 15 17 School Close London Road Warmley Siston		School	Post medieval
13431	No 67 and 69 Tower Road South Warmley Tower		House	Post medieval
13435	Telephone Box Barrs Court Road Oldland		Telephone box	20th century
13438	No 3 Cadbury Heath Road Warmley Tower Oldland		House	Post medieval
13439	Stile Barrs Court Road Oldland		Stile	Post medieval
13440	King William IV Inn Tower Road South Warmley Tower Oldland		Public house	Post medieval
13447	No 49 Tower Road South Warmley Tower Oldland		House	Post medieval
13450	No 19 Wesley Lane Cadbury Heath Oldland		House	Post medieval
13452	No 4 Wesley Lane Warmley Tower Oldland		House	Post medieval
13454	Grimsbury Farm Grimsbury Road Kingswood Oldland		House	Medieval
13455	No 29 31 33 Cadbury Heath Road Warmley Tower Oldland		House	Post medieval
13456	Mill House No 40 Mill Lane Warmley Tower Oldland		House	Post medieval
13940	Telephone Exchange Hill Street Kingswood	366251, 173559	Telephone repeater station	20th century
14002	Medieval Pottery Crown Farm Tower Road North Warmley	367013, 173363	Artefact scatter	Early medieval
14003	Chemical Works Station Road Warmley Siston	367151, 173350	Ochre works	Victorian
14004	Crown Farm Tower Road North Warmley Siston	367025, 173325	Farm	Early medieval
14495	Settlement Lower Barrs Court Farm Oldland		Settlement	Post medieval
14498	Settlement Grimsbury Farm Warmley		Settlement	Post medieval
14499	Settlement Deanery Road Warmley		Settlement	Post medieval
14505	Settlement Springfield Farm Warmley		Settlement	Post medieval
14508	Settlement Siston Common		Settlement	Post medieval
14618	Workers Housing Warmley Brassworks Tower Lane Warmley Siston	366846, 172751	House	Post medieval

HER number	Site name	Location (easting, northing)	Monument type	Date
14782	No 63 and 65 Wraxall Road Goose Green Warmley Oldland (Rejected LLB)		House	Post medieval
14806	Electricity Sub Station Clock Tower Tower Road North Warmley Siston	367016, 172823	Electricity sub station	Victorian
14807	Pottery Kiln Haskins Pottery Tower Road North Warmley	366994, 172797	Pottery kiln	Post medieval
14810	No 138-40 Tower Road North Warmley Siston	367023, 172861	House	Post medieval
14845	Tanners House No 134 Tower Road North Warmley Siston		House	Post medieval
14932	Fairhaven No 74 and 76 Poplar Road North Common Bitton		House	Post medieval
15066	War Memorial Stanley Road High Street Warmley Siston	366850, 173598	War memorial	Victorian
15224	Settlement North Common Oldland Common Bitton		Settlement	Post medieval
15225	Settlement North Common Farm Oldland Common Bitton		Settlement	Post medieval
15226	Settlement Bullhall Farm North Common Oldland Common Bitton		Settlement	Post medieval
15227	Settlement Cowhorn Hill Oldland Common Bitton		Settlement	Post medieval
15234	Mound (3) North Common Oldland Common Bitton	367316, 172575	Mound	Post medieval
15235	Mound (2) North Common Oldland Common Bitton	367278, 172691	Mound	Post medieval
15236	Mound (1) North Common Oldland Common Bitton	367254, 172738	Mound	Post medieval
15528	Wall Wesley Lane Warmley Tower Oldland		Wall	Post medieval
15903	Wall Watching Brief Warmley House Tower Road North Warmley Siston	366947, 172850	Structure	Post medieval
16038	Settlement Cock Road Kingswood		Settlement	Post medieval
16045	Settlement Warmley Hill East Kingswood		Settlement	Post medieval
16100	Prisoner of War Camp Gays Field Wraxall Road Barrs Court Oldland	366248, 172597	Prisoner of war camp	Victorian
16229	Coke Ovens Baden Road Warmley Oldland	366710, 173383	Coke oven	Post medieval
16234	Coal Mine Shaft (2) Cock Road Wraxall Road Oldland	366146, 172985	Mine shaft	Post medieval
16235	Coal Mine Shaft (3) Cock Road Wraxall Road Oldland	366087, 172965	Mine shaft	Post medieval
16239	Cemetery Ebenezer Methodist Church Tower Road South Warmley Oldland	366906, 172620	Cemetery	Post medieval
16240	Settlement Cadbury Heath		Settlement	Post medieval
16241	Settlement Warmley Tower		Settlement	Post medieval
16272	School Cock Road Oldland	365999, 172955	School	Post medieval
16475	Clay Pit Hollybrook Brickworks Warmley Siston	367126, 173731	Clay pit	Post medieval

HER number	Site name	Location (easting, northing)	Monument type	Date
16481	Bridge Siston Brook Tower Road South Warmley Siston	366917, 172694	Bridge	Post medieval
16484	Railway Good Shed Warmley Station London Road Warmley Siston	367033, 173609	Goods shed	Victorian
16493	Warmley Railway Station High Street Warmley Siston	367091, 173574	Railway station	Post medieval
16499	Settlement Warmley Siston		Settlement	Post medieval
16500	Settlement Crown Farm Warmley		Settlement	Post medieval
16501	Settlement St Barnabas Warmley		Settlement	Post medieval
16502	Settlement Warmley House Warmley		Settlement	Post medieval
16503	Clay Pit Tower Road North Warmley Siston	367139, 173154	Clay pit	Post medieval
16506	The Black Horse Public House Tower Road North Warmley Siston	366986, 173330	Public house	Post medieval
16507	Coal Mine Shaft (1) London Road Warmley Siston	367160, 173546	Mine shaft	Post medieval
16508	Coal Mine Shaft (2) London Road Warmley Siston	367230, 173649	Mine shaft	Post medieval
16510	Branch Railway Crown Colliery London Road Warmley Siston	367247, 173351	Railway	Post medieval
16511	Quarry (1) Goldney Avenue Warmley Siston	367281, 173280	Quarry	Post medieval
16512	Quarry (2) Goldney Avenue Warmley Siston	367315, 173284	Quarry	Post medieval
16673	Drinking Fountain Dramway Path Warmley Siston		Drinking fountain	Victorian
16674	Bridge St Ivel Way Warmley Siston		Bridge	Post medieval
16675	No 29 Goldney Avenue Warmley Siston		House	Post medieval
16676	St Barnabas House Church Avenue Warmley Siston		House	Post medieval
16680	Wall Siston Colliery Siston Common Siston		Wall	Post medieval
16693	Britton House Stanley Road Warmley Siston		House	Post medieval
16699	Sculpture Warmley Station London Road Warmley Siston		Sculpture	Victorian
16700	No 1 Station Road Warmley Siston		House	Post medieval
16701	Lamp Post Warmley Signal Box London Road Warmley Siston		Lamp post	Post medieval
16703	Bridge Norman Road Warmley Siston		Bridge	Post medieval
16733	Walls Echo Pond Warmley House Tower Road North Warmley Siston		Wall	Post medieval
16734	Garden Wall Warmley House Tower Road North Warmley Siston		Garden wall	Post medieval

HER number	Site name	Location (easting, northing)	Monument type	Date
16735	Boat House Echo Pond Warmley House Tower Road North Warmley Siston		Boat house	Post medieval
16737	Garden Wall Warmley House Tower Lane Warmley Siston		Garden wall	Post medieval
16738	No 27 to 33 Crown Gardens Warmley Siston		Terrace	Post medieval
16746	Wall Warmley House Tower Road North Warmley Siston		Wall	Post medieval
16748	No 17 High Street Warmley Siston		House	Post medieval
16749	No 4 High Street Warmley Siston (Demolished LLB)		House	Post medieval
16750	The Station Master 46 High Street Warmley Siston		Public house	Post medieval
16752	Workshop High Street Warmley Siston		Workshop	Post medieval
17310	Firework Factory Deanery Road Warmley Kingswood	366722, 173678	Explosives factory	Victorian
17345	Boundary Wall Tanners House No 134 Tower Road North Warmley Siston		Boundary wall	Post medieval
17666	Cottage Baden Road Warmley Oldland	366214, 173103	House	Post medieval
17667	Coal Mine Grimsbury Farm Baden Road Warmley Oldland	366236, 173091	Coal workings	Post medieval
18338	Culvert Lindman Site Brassworks Tower Road North Warmley Siston	366893, 172836	Culvert	Post medieval
18339	Building (1) Lindman Site Brassworks Tower Road North Warmley Siston	366920, 172829	Building	Post medieval
18340	Building (2) Lindman Site Brassworks Tower Road North Warmley Siston	366952, 172825	Building	Post medieval
18513	Prospect Mound Warmley Garden Tower Road North Warmley Siston	366854, 172835	Prospect mound	Post medieval
18518	Outbuilding Warmley House Tower Road North Warmley	366993, 172871	Outbuilding	Post medieval
18644	Wall No 114 Tower Road North Warmley Siston		Wall	Post medieval
18805	Gasometer Howard Walk Bridgegate Siston		Gas holder	Victorian
19045	Webbs 14 High Street Warmley Siston		Shop	Post medieval
19178	Culvert Warmley Brassworks Tower Road North Warmley Siston		Culvert	Post medieval
19223	Air Raid Shelter Warmley House Tower Road North Warmley Siston		Air raid shelter	Victorian
19243	Coronation Park Coronation Road Cafbury Heath Oldland		Garden	Victorian

HER number	Site name	Location (easting, northing)	Monument type	Date
19434	No 57 59 61 Poplar Road North Common Warmley		House	Post medieval
19544	Cottage Coalyard Cadbury Heath Road Cadbury Heath Oldland		House	Post medieval
19777	Sewage Works Tower Lane Warmley		Sewage works	Victorian
19813	Echo Pond Warmley House Tower Road North Warmley Siston		Pond	Post medieval
19861	Outbuildings No 1 Station London Road Warmley Siston		Outbuilding	Post medieval
19904	Building A Warmley Brassworks Tower Road North Warmley Siston		Industrial building	Post medieval
19905	Building B Warmley Brassworks Tower Road North Warmley Siston		Industrial building	Post medieval
19906	Building C Warmley Brassworks Tower Road North Warmley Siston		Industrial building	Post medieval
19907	Building D Warmley Brassworks Tower Road North Warmley Siston		Industrial building	Post medieval
19908	Building E Warmley Brassworks Tower Road North Warmley Siston		Industrial building	Post medieval
19909	Building F Warmley Brassworks Tower Road North Warmley Siston		Industrial building	Post medieval
19910	Building G Warmley Brassworks Tower Road North Warmley Siston		Industrial building	Post medieval
19911	Building H Warmley Brassworks Tower Road North Warmley Siston		Industrial building	Post medieval
19912	Building I Warmley Brassworks Tower Road North Warmley Siston		Industrial building	Post medieval
19913	Building J Warmley Brassworks Tower Road North Warmley Siston		Industrial building	Post medieval
19914	Building K Warmley Brassworks Tower Road North Warmley Siston		Industrial building	Post medieval
19915	Building L Warmley Brassworks Tower Road North Warmley Siston		Industrial building	Post medieval
19916	Building M Warmley Brassworks Tower Road North Warmley Siston		Industrial building	Post medieval
19917	Building N Warmley Brassworks Tower Road North Warmley Siston		Industrial building	Post medieval
19918	Pond Warmley Brassworks Tower Road North Warmley Siston		Furnace pond	Post medieval

HER number	Site name	Location (easting, northing)	Monument type	Date
19919	Reservoir Warmley Brassworks Tower Road North Warmley Siston		Reservoir	Post medieval
19920	Sluice Warmley Brassworks Tower Road North Warmley Siston		Sluice	Post medieval
20070	Turnpike Trust Boundary Marker Deanery Road Warmley		Toll boundary marker	Post medieval
20517	Warmley Conservation Area			

Appendix 2 Archaeological events registered with the Historic Environment Record

HER number	Site name	Location	Event description
9210	Evaluation Avon Ring Road 2 Siston	366938, 175117	General number for work on the Avon Ring Road stage 2. Further work was carried out during 1998 at which point sites numbered 1-15 were allocated SGSMR numbers 12871 - 12885. Additional trial excavation was carried out on Sites 1 and 10. Detailed archive report.
9581	Watching Brief Church Avenue Bridgegate Siston	367487, 173065	An assessment was carried out on this site in 1993. Several features of archaeological significance were recorded. These features and deposits appeared to represent plough marks, post medieval land drains and a section of well consolidated metalled trackway or road tentatively interpreted as part of a Roman Road from Bitton to Berkeley. The Road section could not be dated independently and no signs of roadside settlement were noted. (SGSMR 1353)
9666	Excavation 1994 Warmley House Tower Road North Warmley Siston	366957, 172862	Modern post-brassworks structures uncovered.
9705	Excavation Lower Barr Court Farm Oldland		Limited trial excavation in the areas around the farm revealed few features of significance. Watching brief to be carried out during development
9755	Excavation Tower Road North Warmley Siston	367020, 172784	Trial excavation during road widening works revealed that considerable remains of William Champions brassworks survived intact beneath the surface.
9757	Watching Brief Poplar Farm Warmley Siston		Construction Work on this site began in October 1994, The development was subject to a watching brief condition, but there is no evidence that the watching brief was carried out.
10370	Watching Brief Clock Tower Tower Road North Warmley Siston	367009, 172825	A watching brief was carried out in this area on a geotechnical test pit in August 2002, only previously disturbed material was revealed.
10515	Excavation Tower Lane Warmley Siston		Trial excavation in advance of a proposal to rebuild a bridge over the Siston Brook within the bounds of William Champion's C18 brassmill (SGSMR1433) revealed no archaeologically significant structures or deposits. Although the report considers that the retaining wall with slag block quoins is of recent ie C20th date, it may well be the original C18 bridge abutment (there was certainly a bridge here by the time of the 1st edition OS map) if not part of a building.
10570	Desk Top Study Nursery Site Tower Road North Warmley Siston	366878, 172716	Desk top study of this site carried out in 2007. The Site was formerly part of Siston Common, prior to enclosure. It may have been William Champion
10757	Desk Top Study Tower Road South Warmley		A Desk Top Study of the proposed development area recorded no evidence to justify further archaeological work.
11013	DeskTop Study No 110 to 116 Cock Road Oldland		A Desk Top Study was carried out on this site in 1993.

HER number	Site name	Location	Event description
12643	Excavation Cottages Deanery Road Warmley Kingswood	366580, 173596	This site was partly excavated in 1993 (SGSMR 9210) but no traces of the cottages was recovered and these must lie outside the line of the Ring Road.
12795	Excavation 1986 Warmley House Tower Road North Warmley Siston	366989, 172864	Salvage excavation and recording during the excavation of foundation trenches for an extension to Warmley House Nursing Home revealed traces of three zinc furnaces dating to the C18.
12796	Excavation 1988 Warmley House Tower Road North Warmley Siston	366984, 172835	Excavation(s) was/were carried out between 1986 and 1988 in the area of Champion's brassworks at Warmley. One trench was excavated between Warmley House and the clock tower, it was still open in 1995. Records, and results, of the excavation have not yet been traced.
12811	Watching Brief Siston Brook Oldland	367212, 172265	A watching brief was carried out on this site in 1978. The area of this work is uncertain but development here appears to be of the right age.
12964	Watching Brief Poplar Road Oldland Common	367760, 172711	During pipe laying in 1989 2 rail chairs and segments of rail from The Dramway were recovered.
12968	Excavation Coal Mine (1) Grimsbury Pit Grimsbury Lane Oldland	366567, 173325	The foundations of a horse gin, the base of what was probably a chimney and other features were excavated at SGSMR 1426 during construction of the Avon Ring in 1988.
13992	Evaluation Lawson Mardon Packaging Tower Road North Warmley Siston	367057, 173243	Desk Top Study. An archaeological evaluation was carried out in three areas in 1999, the aim was to assess the site of The West of England Ochre Works (Trenches 6-7), Crown Farm (Trenches 4-5) and a leat feeding the hydraulics at nearby Warmley Brassworks (Trenches 1-3).
14005	Excavation Crown Farm Tower Road North Warmley Siston		Proposed excavation on the site of Crown Farm Warmley.
14626	Watching Brief Warmley House Tower Road North Warmley Siston	366957, 172846	A watching brief was carried out on this site in 2002. There were 7 trial pits in all. All excavations were small scale c2x2m and afforded little opportunity to locate substantial archaeological deposits. The remains of a wall, probably a structure attached to Warmley House, were located. Residual industrial material was recovered.
14724	Watching Brief No 140 Tower Road North Warmley Siston	367015, 172853	A site visit (10/10/02) to this address showed evidence of a large tank and stone foundations which may be brassworks buildings. Subsequently a watching brief and limited trial excavation exposed two walls faced only on their south side. They may be garden walls and are of C19 date. Work carried out by Richard Osgood and David Evans.
16514	Evaluation Grimsbury Farmhouse Baden Road Warmley Oldland	366266, 173123	A desk based study, geophysical survey and trial excavation carried out at this site in 2003/4. A number of features of possible significance were noted (including possible traces of a prehistoric earthwork thought to surround the site of Grimsbury Farm) in the desk top survey and the geophysical survey. A small amount of mining activity and a boundary ditch were located in the excavation but no traces of the possible prehistoric enclosure (SGSMR 1428) were noted.

HER number	Site name	Location	Event description
17009	Watching Brief Electricity Sub Station Clock Tower Tower Road North Warmley Siston	367016, 172823	Electricity sub-station demolished 2003.
17681	Building Recording Retaining Wall Caravan Park Tower Road North Warmley Siston		A stretch of boundary wall along the east side of the caravan park, spanning nos. 11 to 13 Kingsway Park (Fig. 5 no. 17), and identified as part of the lakeside retaining wall, was repaired. A full written and visual record of this stretch was made before it was rebuilt. No further archaeological structures were revealed during this work.
18001	Watching Brief Retaining Wall Warmley Brassworks and 134 Tower Road North Warmley Siston	367015, 172911	Urgent repairs to a retaining wall (probably of C18 date) were needed, and the wall was recorded prior to these works. No ground works were involved in the work. The wall had two phase but these may simply be the result of seasonal breaks.
18004	Watching Brief Warmley Clocktower Tower Road North Warmley Siston	367019, 172820	Watching brief carried out in 2006 on the line of a service trench. The deposits and structure recorded comprised modern made-up ground material overlying a number of earlier structures as well of modern footings for former electricity sub-station. The earlier structures appeared to represent parts of four walls a brick edged plinth and two cobbled surfaces. A stone built culvert or drain was recorded. The structures may be related to the brassworks however it is more likely that a domestic structure with a small coal-cellar.
18094	Salvage Excavation (2006) Lindman Site Brassworks Tower Road North Warmley Siston	366923, 172827	Unauthorised machining had created a large section (c 85m east-west) through the area of the Champion Brasswork factory (SAM 28518), and recording of the section was requested by the county archaeologist and English Heritage. This was undertaken in a single day by members of English Heritage.
18127	Salvage Recording Grotto Warmley Brassworks Tower Road North Warmley Siston	366883, 172862	In August 2006 the volunteers of the Kingswood Heritage Museum reported a case of vandalism at Warmley Grotto (Fig. 5, no. 1) to South Gloucestershire Council. This was inspected by David Haigh, South Gloucestershire Archaeological Officer. Subsequently Avon Archaeological Unit was commissioned by South Gloucestershire Council to carry out immediate emergency recording and reinstatement to the grotto. The vandals appeared to have gained entrance through an opening in the roof, as all ground entrances were securely locked. A modern metal guard around the central rectangular pool had been thrown into the water (Fig. 6, Area 1). Subsequently a hole was dug against the south side of the pool, following the line of two culverts.

HER number	Site name	Location	Event description
18153	Salvage Excavation Lindmans (2007) Tower Road North Warmley Siston		"Following the report on these initial findings (SGSMR18096) South Gloucestershire Council required a further phase of detailed archaeological recording and analysis of the exposed section, particularly as parts of the section had been obscured by spoil during the original exercise. Avon Archaeological Unit Limited was contracted by CgMs Consulting to undertake this work in May 2007, on behalf of Cumberland Developments Ltd. A 75.3m length of the section, where archaeological deposits had been identified, was cleaned by hand, photographed from end to end and drawn at a scale of 1:20 (Figs 10 and 11). Significant archaeological deposits were also drawn at a scale of 1:10, where appropriate. In plan the section was not straight, with a southward turn at the eastern end, while the western end was rounded and irregular (Fig. 5, no. 11). No attempt was made to straighten the section, which in places had been significantly battered back during the machining; rather the battering was compensated for by the use of a stepped datum where necessary. During this exercise a feature only previously noted by English Heritage was found to be a second culvert in the base of a deep cut. The remains of a third structure were identified in the west facing section at the eastern end of the cutting."
18224	Desk top Study Champions Brassworks Warmley	366925, 172781	Desk Top Survey and management plan.
18371	Excavation Service Trench Warmley Brassworks Tower Road North Warmley Siston	366995, 172778	"In November 2007 Avon Archaeological Unit excavated five connected service trenches, for the combined supply of buried services and utilities, from Tower Road North to the former Lindman Works building 69 (Fig 5, no. 12). These trenches revealed parts of three structures related to the Champion brassworks as well as structures related to the later 19th century Haskins pottery, and the substantial remains of an early 20th century rectangular continuous kiln."
18581	Building Recording No 4 High Street Warmley Siston (Demolished LLB)	366812, 173552	A Photographic building Survey, conducted to English Heritage Level 2 standard was undertaken at No 2 High Street Warmley South Gloucestershire, prior to the construction of a block of 9 apartments on the site. The building comprised a central single storey structure, which had been expanded by the addition of two lean-to extensions.
18598	Geophysical Survey Warmley Garden Tower Road North Warmley Siston	366905, 172860	A geophysical survey of this area was carried out as part of the Archaeology in the Park Event by Tony Roberts of Bristol University. The build up of slag and other waste on the site made interpretation of the results difficult, no certain conduits were noted, but a possible path and garden feature were.
18634	Archaeological Mitigation Security Compound Tower Lane Warmley	367015, 172792	During works to erect a new perimeter fence the excavation of 39 postholes was monitored for archaeological finds and features (see Fig. 5, no. 14). Postholes in the northeast corner of the compound revealed a surface or surfaces of brick, including firebrick, which would probably have been contemporary with the Haskins pottery. One piece of residual refractory material was retrieved from a posthole adjacent to the boundary wall with Tower Road North.

HER number	Site name	Location	Event description
19015	Warley Garden and Grotto	366872, 172878	Warmley grottos and garden excavations 1986-1988.
19068	Trial Excavation Pin Sculpture Tower Road Borth Warley Siston	367037, 172805	The following report details the results of an archaeological evaluation exercise undertaken to establish the archaeological impact of foundations for a proposed pin sculpture at the Warmley Clocktower premises, Tower Road North, Warmley, South Gloucestershire, (NGR ST 6703 7280). The trench revealed a simple stratigraphic sequence comprising an upper sequence of thin turf over a series of very mixed modern and redeposited industrial waste deposits up to 950mm deep, interpreted to reflect modern footpath and landscaping activity. These in turn overlay a series of earlier stratified deposits up to 600mm deep of late 19th to 20th century date, which incorporated significant amounts of fragmentary modern pipe ceramics and were interpreted to reflect activity associated with the Haskins Ceramic Works, which operated on the site between 1881 and 1966. These deposits in turn sealed two broadly contemporary cut soil features. The function of these cut features, which possibly reflected a pair of small pits, remains uncertain although they represent intact industrial archaeological features and deposits preserved at a depth of c.1.5m (41.10m OD) below the modern ground surface. Artefactual dating evidence recovered from the trench was restricted to a small collection of 19th century and modern ceramics that included examples of standard 19th and 20th century pottery types along with modern vessel glass and common fragments of Haskins Works pipe ceramics.
19785	Bank Watching Brief (2011) Lindmans Tower Road North Warmley Siston		Archaeological monitoring and recording was undertaken during shrub planting on a 12m wide strip of land above the bank recorded in 2006-7. (Fig 5, no. 16). Deposits of unstratified metallurgical waste were observed across the western half of the strip. In the eastern half of the strip a previously unrecorded section of upstanding double skinned walling, on an approximate north to south alignment, was noted. Comparison with the results of the 2007 recording indicate this is probably a continuation of the east wall of Structure 1c. Beyond the strip, located midway in an area of adjoining woodland, metallurgical waste was observed from the upcast of a badger sett.
20182	Watching Brief St Barnabas Church Church Avenue Warmley Siston		An archaeological watching brief was undertaken during groundworks associated with the relaying of a gas pipeline. The trench excavation and watching brief uncovered no archaeological finds or features.