

**MAP**  
**ARCHAEOLOGICAL PRACTICE Ltd.**

**Marsden Park Cottage**  
**Marsden Park**  
**Walton Lane**  
**Nelson**  
**Lancashire**

**SD 86041 37991**  
**MAP 5.23.2014**

**Photographic Building Record**

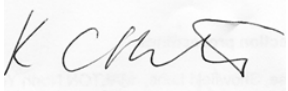
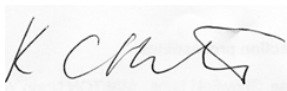
**MAP  
ARCHAEOLOGICAL PRACTICE LTD**

**Marsden Park Cottage  
Marsden Park  
Walton Road  
Nelson  
Lancashire**

**MAP 5.23.2014**

**SD 86041 37991**

**Photographic Building Record**

|  |   |
|--|---|
| <b>Report Prepared By</b><br> | <b>Report Authorised By</b><br> |
| <b>Date:</b><br><b>08/09/2014</b>  | <b>Date:</b><br><b>08/09/2014</b>   |

**Marsden Park Cottage  
Marsden Park  
Walton Road  
Nelson  
Lancashire**

**MAP 5.23.2014**

**SD 86041 37991**

**Photographic Building Record**

| <b>Contents</b>                             | <b>Page</b> |
|---|-------------|
| Figure List                                 | 2           |
| Plate List                                  | 3           |
| Non Technical Summary                       | 6           |
| 1. Introduction                             | 5           |
| 2. Site Description                         | 6           |
| 3. Archaeological and Historical Background | 6           |
| 4. Aims and Objectives                      | 12          |
| 5. Methodology                              | 12          |
| 6. Results                                  | 13          |
| 7. Conclusions                              | 15          |
| 8. References and Bibliography              | 17          |
| 9. List of Contributors                     | 17          |
| <br>  |             |
| Appendices                                  |             |
| 1. Photographic Listing                     | 56          |

| <b>Figure List</b>  | <b>Page</b> |
|---|-------------|
| 1. Site Location. Scale 1:50,000.   | 18          |
| 2. Proposed Development Area. Scale 1:2,500.                                      | 19          |
| 3. Designated Heritage Assets (Grade II Listed Buildings).<br>Scale 1:2,500.      | 20          |
| 4. Non-designated Heritage Assets (NMR and the Lancashire<br>SMR). Scale 1:2,500. | 21          |
| 5. Extract from the 1893 Edition Ordnance Survey map.<br>Scale 1:2,500.           | 22          |
| 6. Extract from the 1912 Edition Ordnance Survey map.<br>Scale 1:2,500.           | 23          |
| 7. Extract from the 1932 Edition Ordnance Survey map.<br>Scale 1:2,500.           | 24          |
| 8. Marsden Park Cottage: West Elevation. Scale 1:100.                             | 25          |
| 9. Marsden Park Cottage: South Elevation. Scale 1:100.                            | 26          |
| 10. Marsden Park Cottage: East Elevation. Scale 1:100.                            | 27          |
| 11. Marsden Park Cottage: North Elevation. Scale 1:100.                           | 28          |
| 12. Marsden Park Cottage: Ground Floor Plan. Scale 1:100.                         | 29          |
| 13. Marsden Park Cottage: First Floor Plan. Scale 1:100.                          | 30          |

| <b>Plate List</b>  | <b>Page</b> |
|--|-------------|
| 1. Marsden Park Cottage from Walton Lane. Facing South.                          | 31          |
| 2. Marsden Park Boundary Wall. Facing North-east.                                | 31          |
| 3. Marsden Park Cottage and Marsden Hall Cottage Exterior.<br>Facing South-east. | 32          |
| 4. Marsden Park Cottage Exterior. Facing East.                                   | 32          |
| 5. Marsden Park Cottage Exterior. Facing East.                                   | 33          |
| 6. Marsden Park Cottage Exterior Arch. Facing East.                              | 33          |
| 7. Marsden Park Cottage and Marsden Hall Cottage Exterior.<br>Facing West.       | 34          |
| 8. Marsden Park Cottage Exterior. Facing North-west.                             | 34          |
| 9. Marsden Park Cottage Exterior. Facing South-west.                             | 35          |
| 10. Marsden Park Cottage Exterior. Facing South.                                 | 35          |
| 11. Marsden Park Cottage Exterior. Facing South.                                 | 36          |
| 12. Marsden Park Cottage Exterior. Facing West.                                  | 36          |
| 13. Marsden Park Cottage Exterior. Facing North-west.                            | 37          |
| 14. Marsden Park Cottage Exterior : Blocked Attic Window.<br>Facing South.       | 37          |
| 15. Marsden Park Cottage Exterior. Facing North-west.                            | 38          |
| 16. Marsden Park Cottage Exterior. Facing North.                                 | 38          |
| 17. Marsden Park Cottage Exterior. Facing North-west.                            | 39          |
| 18. Marsden Park Cottage Exterior: Detail of Plaque. Facing North.               | 39          |
| 19. Marsden Park Cottage Exterior Arch. Facing North-west.                       | 40          |
| 20. Marsden Park Cottage Interior. Ground Floor. Facing West.                    | 40          |
| 21. Marsden Park Cottage Interior. Ground Floor. Facing West.                    | 41          |
| 22. Marsden Park Cottage Interior. Ground Floor. Facing North.                   | 41          |
| 23. Marsden Park Cottage Interior. Ground Floor. Facing South.                   | 42          |
| 24. Marsden Park Cottage Interior. Ground Floor.<br>Facing North-east.           | 42          |
| 25. Marsden Park Cottage Interior. Ground Floor. Facing West.                    | 43          |
| 26. Marsden Park Cottage Interior. Ground Floor. Facing East.                    | 43          |
| 27. Marsden Park Cottage Interior. Ground Floor. Facing West.                    | 44          |
| 28. Marsden Park Cottage Interior. Ground Floor. Facing South.                   | 44          |
| 29. Marsden Park Cottage Interior. Ground Floor.<br>Facing South-east.           | 45          |

|     |  |    |
|-----|--|----|
| 30. | Marsden Park Cottage Interior. Ground Floor. Facing East.      | 45 |
| 31. | Marsden Park Cottage Interior. Ground Floor. Facing East.      | 46 |
| 32. | Marsden Park Cottage Interior. Ground Floor. Facing North.     | 46 |
| 33. | Marsden Park Cottage Interior. Ground Floor. Facing North.     | 47 |
| 34. | Marsden Park Cottage Interior. Ground Floor. Facing North.     | 47 |
| 35. | Marsden Park Cottage Interior. Ground Floor. Facing West.      | 48 |
| 36. | Marsden Park Cottage Interior. Ground Floor. Facing East.      | 48 |
| 37. | Marsden Park Cottage Interior. Stairs. Facing East.            | 49 |
| 38. | Marsden Park Cottage Interior. Stairs. Facing West.            | 49 |
| 39. | Marsden Park Cottage Interior. First Floor. Facing South-west. | 50 |
| 40. | Marsden Park Cottage Interior. First Floor. Facing West.       | 50 |
| 41. | Marsden Park Cottage Interior. First Floor. Facing North-east. | 51 |
| 42. | Marsden Park Cottage Interior. First Floor. Facing West.       | 51 |
| 43. | Marsden Park Cottage Interior. First Floor. Facing North.      | 52 |
| 44. | Marsden Park Cottage Interior. First Floor. Facing South.      | 52 |
| 45. | Marsden Park Cottage Interior. First Floor. Facing North-west. | 53 |
| 46. | Marsden Park Cottage Interior. First Floor. Facing South.      | 53 |
| 47. | Marsden Park Cottage Interior. First Floor. Facing South.      | 54 |
| 48. | Marsden Park Cottage Interior. First Floor. Facing South-east. | 54 |
| 49. | Marsden Park Cottage Interior. First Floor. Facing North.      | 55 |
| 50. | Marsden Park Cottage Interior. First Floor. Facing North.      | 55 |

**Marsden Park Cottage  
Marsden Park  
Walton Road  
Nelson  
Lancashire**

**MAP 5.23.2014**

**SD 86041 37991**

Photographic Building Record

## **Non Technical Summary**

*This report has been undertaken by MAP Archaeological Practice Ltd under the instruction of Colin Briggs, Bowman Riley Architects on behalf of Candelisa, to record Marsden Park Cottage, a Grade II Listed Building, prior to its renovation as a Residential Dwelling at Marsden Park, Walton Lane, Nelson.*

*The Building Recording showed the cottage was an eighteenth century stone built cottage dated to the late eighteenth century. With a plaque on the southern elevation dating to the mid nineteenth century. The cottage had a later two storey and single storey extension to the east and a modern concrete tile roof. The interior of the cottage had been renovated previously in the late twentieth century for its use as offices, with the removal of the interior fireplaces and replacement of the windows and most of the interior doors.*

*The map regression shows the building was originally larger, possibly with another cottage to the north.*

## **1. Introduction**

- 1.1 The Building Recording has been commissioned by Colin Briggs of Bowman Riley Architects on behalf of Candelisa to record the Grade II Listed Building, Marsden Park Cottage, prior to its renovation as part of

the proposed residential development at Marsden Park, Walton Lane, Nelson (SD 86041 37991 : Fig. 1).

- 1.2 Archaeological, Historical and Architectural remains are protected by means of Statutory Instruments; including the Ancient Monuments and Archaeological Areas Act 1979 and Planning (Listed Buildings and Conservation Areas) Act 1990); and also by World Heritage Status, the National Planning Policy Framework, Chapter 12 (March 2012).
- 1.3 The Building Recording was requested by Rosemary Lyons, Conservation Officer at Pendle Borough Council.
- 1.4 The Building Record was undertaken on Wednesday 13<sup>th</sup> August 2014.
- 1.5 This report was funded by Candelisa.
- 1.6 All maps within this report have been produced from Ordnance Survey with the permission of the Controller of Her Majesty's Stationery Office, Crown Copyright. License No. AL 50453A.

## **2. Site Description**

- 2.1 The Proposed Development Area is located within the Town of Nelson in Lancashire. The Proposed Development Area is located on the corner of Walton Lane and Town House Road (Fig. 2). Marsden Park Cottage is located on the western edge of the Proposed Development Area.

## **3. Archaeological and Historical Background**

- 3.1 Nelson is a modern industrial town in Lancashire, which developed in the mid to late nineteenth century and incorporated the earlier Medieval Settlement of Marsden.



- 3.2 There were three Designated Heritage Assets within the search area, which comprised the building being recorded, Marsden Park Cottage, which is attached to Marsden Hall Cottage, also Marsden Hall and the Coach-house to Marsden Hall, noted on Table 1 below and illustrated on Figure 3.

**Table 1: Designated Heritage Assets within the Proposed Development Area**

| SMR Ref.   | Grid Ref.         | Description  | Period        |
|------------|-------------------|--|---------------|
| LSMR 13865 | SD 86041<br>37991 | Former Coach-house to Marsden Hall, Town House Road, Nelson<br>Coach-house, now store (etc), recently damaged by fire. Probably mid to later C18; altered. Watershot coursed sandstone rubble with quoins, stone slate roof. Broad L-plan with rear gable to street and wider front gable facing Marsden Hall. Two storeys. The gabled west facade has a stone balcony to the 1st floor carried round from the north side and extending almost the full width, and cavetto-moulded gable coping with kneelers and a large urn finial with the slender shaft of a former weathervane. The ground floor has 2 wide round-headed wagon doorways offset to the right, both with C20 board double doors, splayed voussoirs and keystones interrupted by the balcony, and between these a square-headed window in C17 style with double-chamfered surround and hoodmould with shield stops (now boarded). The 1st floor, served by a balcony with cast-iron stick-baluster railings and carried on large moulded stone brackets, has an unusual 7-light mullioned window with square-cut flush mullions (the 4th, 5th and 6th lights with damaged 6-pane glazing boarded internally and the others boarded externally), a coupled pair of doorways to the right blocked with stone but furnished with lugs for outward-opening doors, and a boarded 1-light window right of these; and in the gable is a round-headed stone-louvred window with a keyed plain surround. The north side has (inter alia) external steps to the balcony, a doorway at the top of these with plain surround, a former doorway below the balcony altered as a window, near the left (east) end a | Post-medieval |

|            |                   |   |               |
|------------|-------------------|---|---------------|
|            |                   | <p>square-headed doorway with chamfered quoined surround, tall windows and a sliding door at ground floor, and 4 square windows at 1st floor (all boarded). The south side, stepped back beyond the 1st bay, has (inter alia) at 1<sup>st</sup> floor of the 1st bay a rectangular sundial angled slightly to the right, with a moulded corbel, frieze lettered "Lat 53 49 N / Lon 2 10 W" and "AD 1837", and a shaped panelled face inscribed: "Test well Thine Heart, Thy will, Thy words, Thy way / And the True Light will guide to Glorious Day"; and a set-back 3-window portion which has a blocked doorway, a blocked square window on each floor to the left and 2-light windows to the right with flat-faced mullions. The rear gable (to the street) has 2 blocked doorways at ground floor, an inserted loading doorway above to the right and a 3-dimensional cruciform finial. Interior not accessible. History: not known, but mullioned window at west end and inserted loading doorway at east end suggests conversion to use as handloom weaving workshop c.1800. Forms group with Marsden Hall approx. 150 metres west (qv)<br/>Grade II Listed Building</p> |               |
| LSMR 17891 | SD 87874<br>38111 | <p>Marsden Hall, Marsden Park, Walton Lane, Nelson<br/>House, now a restaurant. c1700. Originally of 2 portions, larger C18 portion has been demolished. Rubble. Stone slate hipped roof. Two storeys. Rear ground floor has plain square window, 9-light stone mullion window, plain door-way, 6-light similar and 3-light similar. 1st floor has 1 large window with moulded surround featuring moulded lions head, to right is 9-light stone mullion window and 5-light similar (last light blocked), with two small square windows above door. Sundial included from which the time may be ascertained in 17 different places in the world. Four stacks, including one very large one on ridge.<br/>Grade II Listed Building</p>  | Post-medieval |
| LSMR 18197 | SD 86041<br>37991 | <p>Marsden Hall Cottage and Marsden Park Cottage, Marsden Park, Walton Lane, Nelson<br/>Two cottages and linking wagon archway. Probably mid to late C18: altered in C19 and subsequently. Sandstone rubble, with concrete tiled</p>  |               |

|  |  |   |  |
|--|--|---|--|
|  |  | <p>roofs. The cottages flank the entrance to the rear courtyard and the archway bridges it: Marsden Hall Cottage on the south side has an irregular plan structurally integrated with the north-east corner of Marsden Hall, Marsden Park Cottage has a rectangular plan parallel with the drive between them, and the archway links their west fronts. Two storeys, an irregular façade with 2 gables linked by a short screen wall over a tall elliptical archway, one 1st-floor window in each gable. Marsden Hall Cottage to the right, with an open-pedimental gable which partly spans the screen wall to the left and has a large apex urn, has 2 square windows at ground floor under a dripmould run out and stepped up over a doorway to the right, over which is a round-arched window (both these abutting the junction with the hall), and a rectangular window in the centre of the upper floor. The archway has a rusticated surround and linen-fold enriched keystone, and a pair of low wrought-iron bar gates with dogbars. The gable end of Marsden Park Cottage has coupled doorways to the left, a small segmental-arched opening mounted on that to the left, a square window in the centre of the ground floor and a small rectangular window inserted at 1st floor. Except for the last, all these doorways and windows have square-cut plain surrounds, and the windows have altered glazing. Continued to the left of Marsden Park Cottage is a tall screenwall to the walled garden. The right-hand side wall of this cottage (facing the drive) has features suggestive of a former non-domestic function: a rectangular tripartite grid of square-cut mullions and transoms. in which the left and right-hand parts have three 3-light stages to the eaves, the top and bottom glazed but the middle blocked, and the centre part has 2 stages each divided into 2 square panes, the lower being of 2 lights (the left glazed and the right blocked); while the upper left panel contains an oval plaque with remains of painted lettering ("MARSD.../ Founded.../ Edwd.../ Esqr."), said to commemorate the foundation of an asylum in these buildings c.1850. Attached to the rear gable is an early</p> |  |
|--|--|---|--|

|  |  |   |  |
|--|--|---|--|
|  |  | C19 extension covering a doorway at 1st floor (visible internally) and partly covering a round-headed attic window.<br>Grade II Listed Building |  |
|--|--|---|--|

- 3.3 There are two Non-designated Heritage Assets within 500 metres of the Proposed Development Area (Table 2: Fig. 4). These Heritage Assets range in date from the Prehistoric to the Modern Period.

**Table 2: Non-designated Heritage Assets within 500 metres of the Proposed Development Area.**

| SMR Ref.    | Grid Ref.      | Description  | Period      |
|-------------|----------------|--|-------------|
| LSMR 2037   | SD 88 38       | Flint Scraper found in the Castlecliff Area in 1976/7.             | Prehistoric |
| NMR 1442096 | SD 87830 37995 | Marsden Park Swimming Pool/Lido<br>Opened 1930 and closed in 1999. | Modern      |

### 3.4 *Prehistoric/Undated Heritage Assets*

- 3.4.1 There are no Designated Heritage Assets dating to the Prehistoric Period within 500 metres of the Proposed Development Area.
- 3.4.2 There is one Prehistoric find (a Non-designated Heritage Asset) within 500 metres of the Proposed Development Area, a flint scraper (Lancashire SMR Ref. 2037) found in the Castlecliff Area.

### 3.5 *Roman, Anglo-Saxon/Anglo-Scandinavian Heritage Assets*

- 3.5.1 There are no Designated or Non-Designated Heritage Assets dating to the Roman, Anglo-Saxon or Pre-Conquest Periods within 500 metres of the Proposed Development Area.

### 3.5 *Medieval*

- 3.5.1 Marsden is first documented in the twelfth century, as the two townships of Great and Little Marsden. Marsden does not appear to have been a manor in its own right in the Medieval Period, but each belonged to separate manors. Great Marsden lay within the Chapelry and Manor of Colne and Little Marsden lay within the Manor of

Ightenhill (Farrer and Brownbill 1911, 537). The Manors of Colne and Ightenhill were part of the extensive and ancient parish of Whalley, the Hundred of Blackburn. Great and Little Marsden were part of the de Lacy family's Honor of Clitheroe.

3.5.2 Settlement in medieval Marsden appears to have been small hamlets and farmsteads spread across the Townships of Little and Great Marsden. Farming was the mainstay of the local economy in the Medieval Period and tenancy agreements are mentioned in documents in the thirteenth and fourteenth centuries. Cloth manufacture was part of Marsden's economy from at least the fourteenth century. By the fourteenth or fifteenth century, Bennett has stated that most of the farmhouses in Marsden were equipped for spinning, weaving or dressing cloth (Bennett 1957, 97).

### **3.6 *Post-medieval to Modern***

3.6.1 The common land of Marsden was enclosed in the early seventeenth century; with Great Marsden enclosed in 1618 and in Little Marsden between 1628 and 1633 (PRO DL/44/1026; Bennett 1957, 94).

3.6.2 The Waltons of Marsden Hall were producing worsteds from 1558 (Bennett 1957, 98-9). Marsden in 1666 had 240 hearths liable to the tax. There was no very large house noted, but Giles Hammond's property had eight hearths, George Hartley's of Bradley six, and the following five each: Richard Hargreaves, John Halsted, Lawrence Hargreaves, Miles Whitaker, Henry Walton and William Hargreaves. The Listed Building description describes the hall was built c1700, which dates it to the substantial extension built in 1740. The larger eighteenth-century part of the house has been demolished.

3.6.3 In 1877, Marsden Hall was described as a 'retreat for mental invalids' (Hall 1877, 80). The surviving part of the hall is Grade II Listed Building, as are two cottages (Marsden Park Cottage and Marden Hall

Cottage) with a linking wagon archway and a coach house, all of eighteenth-century date.

3.6.4 On the 1893, First Edition Ordnance Survey Map depicted the cottage as a building twice as large as the present cottage (Fig. 5). In 1911, the Hall and its ground were bequeathed to the Nelson Corporation. The Hall and its attached grounds became a public park and recreation ground. A number of recreational facilities have been added to the park in the twentieth century, including bowling greens, playgrounds, a swimming pool, tennis courts and a pavilion.

3.6.5 The 1912 Edition Ordnance Survey map depicted the cottage north of the Hall as of a similar size (Fig. 6). The present layout of the cottage was clearly visible on the 1932 Edition Ordnance Survey map (Fig. 7).

3.6.6 The swimming pool at Marsden Park was closed in 1999.

#### **4. Aims and Objectives**

4.1 The proposed building work will renovate the existing cottage.

4.2 The Aim of the Building Assessment of the cottages and outbuildings on site:-

- to determine the original nature, date and survival of any earlier structure and fabric and their development to present day

#### **5. Methodology**

5.1 The interior and exterior of the cottage were observed and notes taken on the layout, construction materials and architectural details. A photographic record using 35mm monochrome film and 14 megapixel digital cameras was undertaken.

5.2 The photographic record for the building assessment comprised 73 monochrome print film exposures and 86 digital shots. The

Photographic Record of features and general trench shots included a film register noting film number, shot number, location of shot, direction of the shot, and a brief description of the subject (Appendix 1).

## **6. Results (Figs. 3-4 & Pls. 1-20)**

6.1 The Rapid Building Assessment was undertaken on Marsden Park Cottage on the 13<sup>th</sup> August 2014. The cottage is visible through the gateway onto Walton Road and from Marsden Park (Pls. 1 & 3).

### *6.2 Exterior Description (Figs. 8 & 9-12; Pls. 1-19)*

6.2.1 The cottage was unused at the time of the survey with the main entrances on the west elevation and the rear entrance on the north elevation (Fig. 4; Pls. 3-4 & 10-11). There was a located gate on the archway into Marsden Park (Pls. 6 & 19). The cottage was attached to Marsden Hall Cottage to the south by the archway. The archway has a rusticated surround and linen-fold enriched keystone, and a pair of low wrought-iron bar gates with dogbars. To the north of Marsden Park Cottage is a tall boundary wall separating the park from the walled garden (Pl. 2).

6.2.2 Marsden Park Cottage was a two storey building with a gable roof was constructed of roughly dressed sandstone rubble with a two storey extension to the east with a single pitch roof (Pls. 1-19). There was a central chimney on the apex of the roof. The north elevation was rendered. The west elevation had a main door and the rear entrance was on the north elevation.

6.2.3 The west gable end of Marsden Park Cottage had a blocked doorway and another entrance in the boundary wall to the left, and a blocked segmental-arched opening above the blocked door (Pl. 5). In the cottage elevation, there was a central square window on the ground floor and a small rectangular window inserted on the first floor. The ground floor doorways and windows had square-cut plain surrounds (Pl. 4).

6.2.4 The south elevation on the ground floor had a series of four windows with square-cut mullions and transoms with two three light windows, one two light window, one blocked window and two rectangular three light windows (Pls. 8, 15-18). The middle row of mullions and transoms had been blocked. On the first floor there are two three light mullion windows. On the first floor between the windows was an oval painted plaque with remains of painted lettering, only partially legible ("MARSD.../ Founded.../ Edwd.../ Esqr."), said to commemorate the foundation of an asylum in these buildings c.1850.

6.2.5 Attached to the rear gable was an early nineteenth century two storey stone built extension. There were windows in the extension, on the south and east elevations on the ground and first floors. The extension partially covered over a round-headed attic window (Pl. 14).

6.2.6 The north gable had a possible blocked doorway at first floor level into the extension, with an inserted window. There was the rear door and a window at ground floor level accessed via steps to the east. The elevation had a distinct step in to the west of the access steps (Fig.11 and Pls. 11-12).

### 6.3 *Interior Description (Pls. 21-50)*

6.3.1 The interior of the cottages showed that there were two main rooms on the ground and three on the first floor, with hall along the northern side of the building and an additional two rooms on the ground floor in the extension and one room on the first floor in the extension. The internal fireplaces have been removed in all the rooms.

6.3.2 The main entrance from Marsden Park opened onto a narrow hall with stairs to the first floor (Pls. 20-22)



- 6.3.3 The main rooms on the ground floor had ceiling beams, the joists supporting the upper floor, with two visible in the western room and three in the eastern room (Pls. 23-29).
- 6.3.4 There was a thick plank door between the east room and the hall into the extension (Pl. 30). The northern doorway led into a small pantry/cupboard and the door had an arched surround with central keystone (Pls. 31-34). The door into the kitchen to the east had a rectangular stone surround.
- 6.3.5 The ground floor rear hall was lit by a small window (now blocked), but the rear hall does not connect to the hall from the front door (Pls. 35-36).
- 6.3.6 The first floor had a hall along the north wall with access from the ground floor to the east and into the three rooms and extension (Pls. 37-38 & 45). In the main hall, there was a change of level (two steps up) between the entrance into the west room and stairs and the two other rooms. On the first floor, there were two access points into the attic, in the hall and the eastern room. The central and southern room had been subdivided by the insertion of a thin partition wall (pls. 43-44 & 46-48).
- 6.3.7 The small hall between the extension and the main cottage on the first floor had a doorway (with no door) with stone surround and the window in the north gable had a similar surround (Pls. 49-50)

## **7. Conclusions**

- 7.1 The building assessment has recorded the existing structure of Marsden Park Cottage. The map regression suggested that Marsden Park Cottage was originally part of a larger building or possibly one of two cottages. The northern cottage was demolished between 1912 and 1932, as suggested by the Ordnance Survey map regression. The cottage had been converted into offices in the late twentieth

century and the fireplaces removed. The conversion had split the second room to form three offices on the first floor.

- 7.2 The large amount of fenestration on the south elevation may suggest the use of the rooms for weaving in the past. The use of the attic for accommodation or storage in the past is suggested by the blocked arched window in the east elevation. The two storey extension on the east gable partially covers this attic window. The possible blocked doorway on the northern elevation may also reflect the earlier larger building or a separate entrance onto the first floor.
- 7.3 The internal features of most interest were the stone window surround and door surround in the hall between the cottage and the extension and the two doors in the extension on the ground floor. These suggest that these features may be reused from an earlier structure.

## 8. Bibliography

[www.british-history-online.org.uk](http://www.british-history-online.org.uk)  
[www.heritagegateway.org.uk](http://www.heritagegateway.org.uk)

Bennett, W. 1957 *The History of Marsden and Nelson*, Nelson.

Borough of Pendle 2012 *Marsden Park 10 Year Management Plan 2007 – 2017*.

English Heritage 2006 *Understanding Historic Buildings. A Guide to Good Recording Practice*. English Heritage Publishing.

Farrer W and Brownbill J 1911 *The Victoria History of the County of Lancaster*, Volume 6, London

Institute for Archaeologists. (2008) *Standard and Guidance for the Archaeological Recording of Buildings and Structures*. Reading: Institute for Archaeologists.

[http://www.archaeologists.net/sites/default/files/node-files/ifa\\_standards\\_building.pdf](http://www.archaeologists.net/sites/default/files/node-files/ifa_standards_building.pdf)

Institute for Archaeologists. (2013) *Code of Conduct*. Reading: Institute for Archaeologists.

<http://www.archaeologists.net/sites/default/files/node-files/Code-of-conduct-RevOct2013.pdf>

Lancashire County Council 2005 *Nelson Historic Town Assessment Report*. Lancashire Historic Town Survey.

## 9. List of Contributors

Photographer      Kelly Hunter

Report              Kelly Hunter

Illustrations      Kelly Hunter

Plates              Kelly Hunter



With Permission of the Controller of Her Majesty's Stationery Office  
 © Crown Copyright  
 License No. AL 50453A



**TITLE:** Site Location.

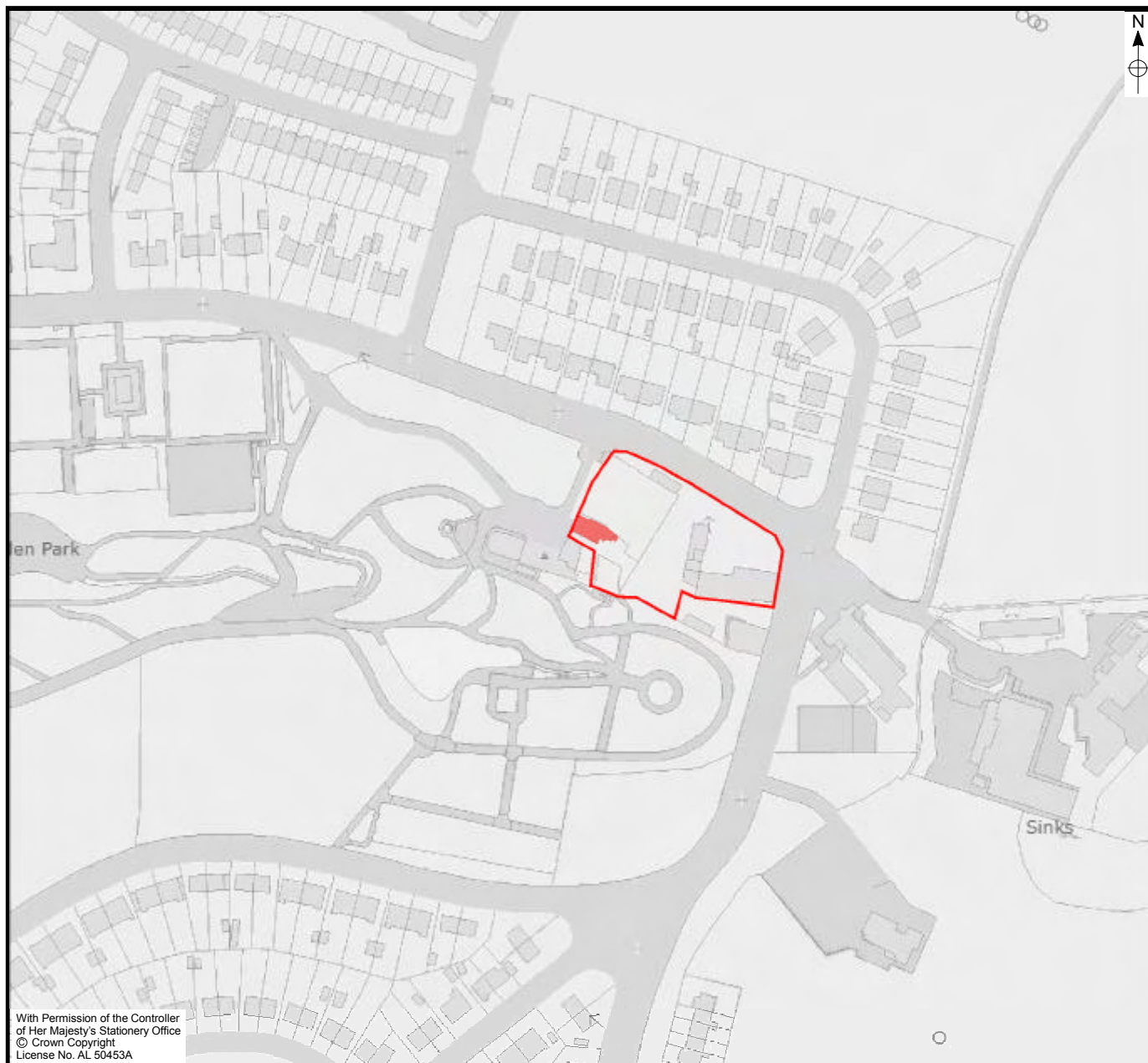
**SITE:** Marsden Park, Walton Lane, Nelson


**FIGURE:** 1.

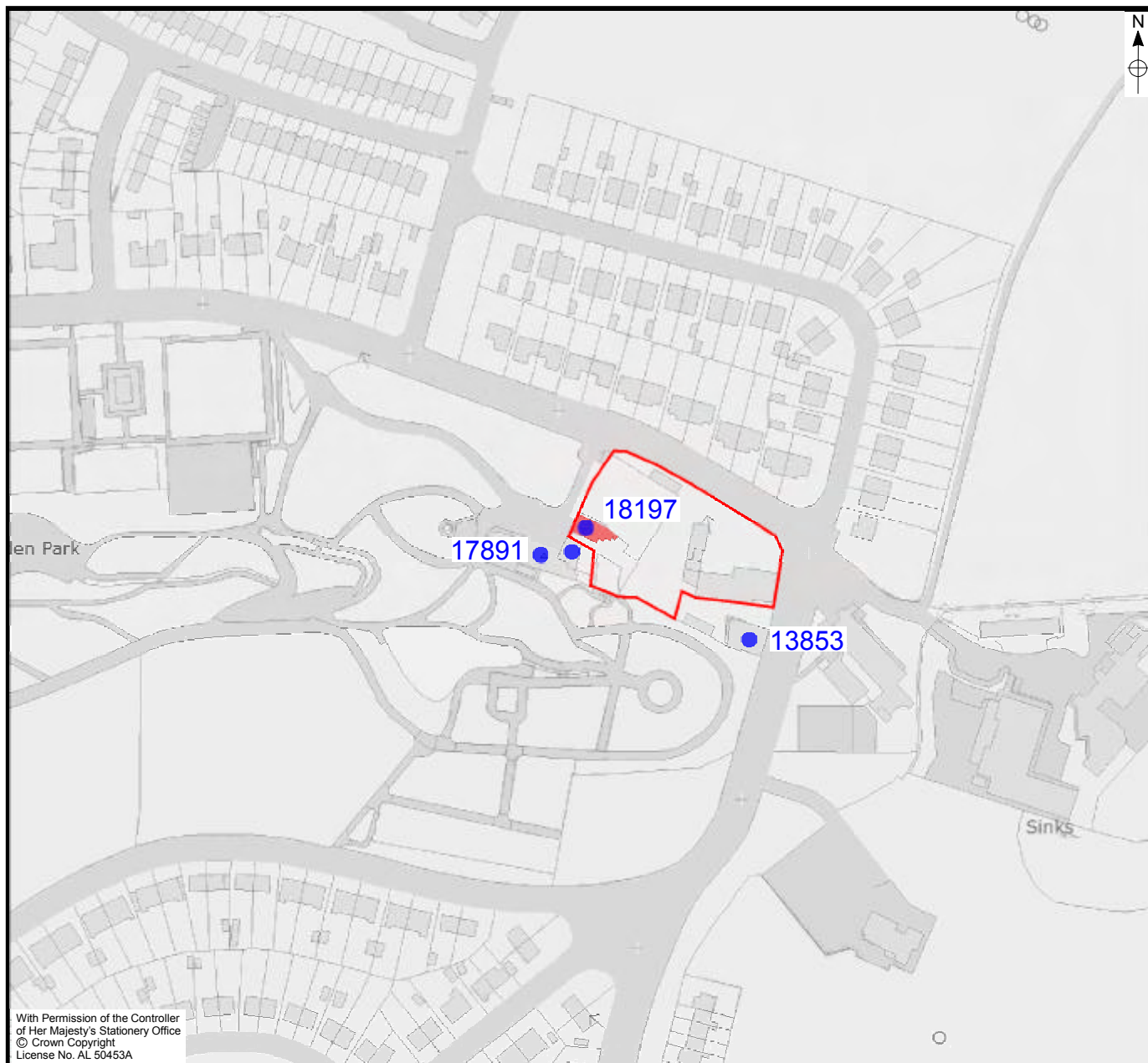
**Scale:** 1:50,000


**CLIENT:** Candelisa

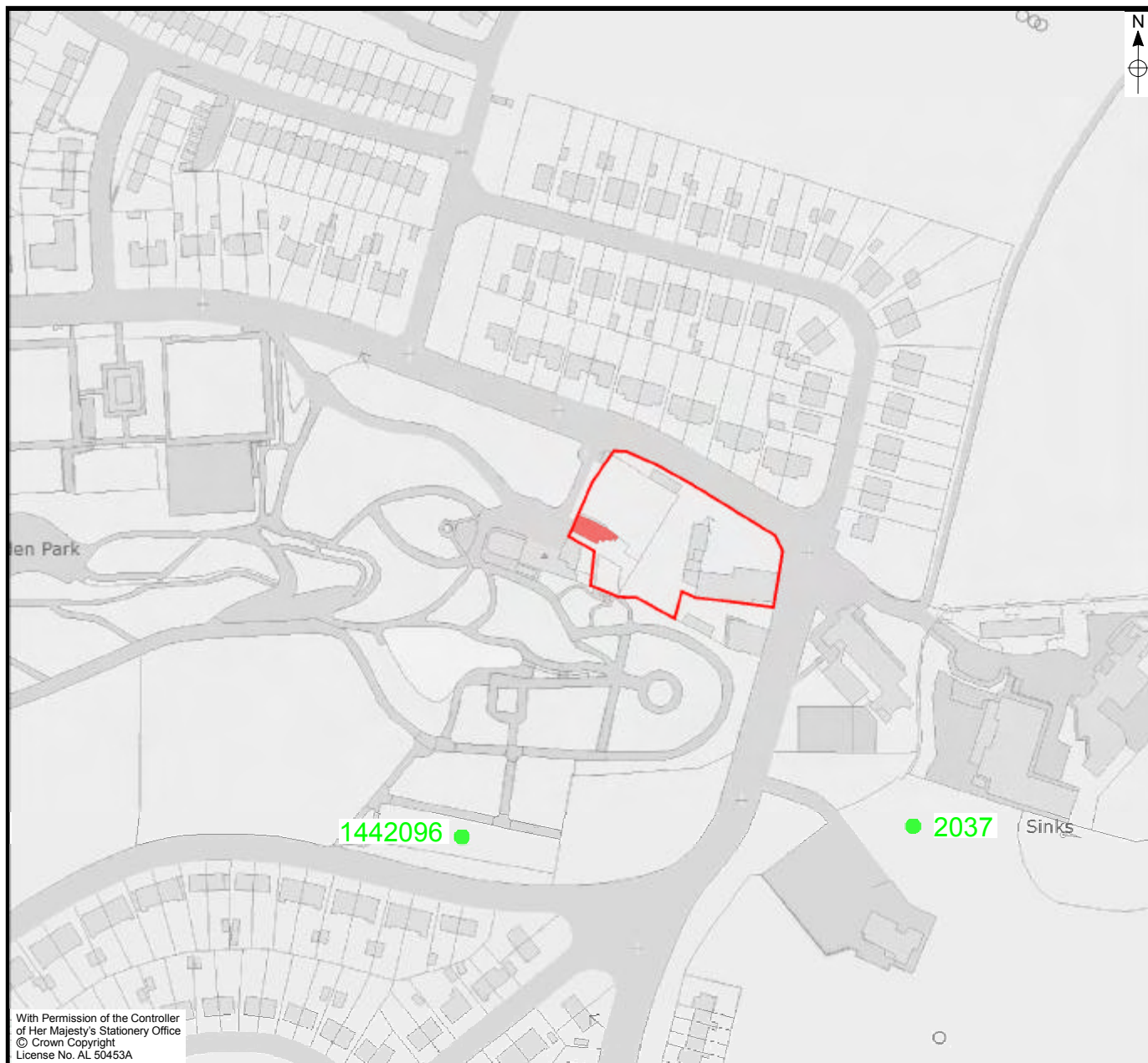
**DRAWN BY:** KCH




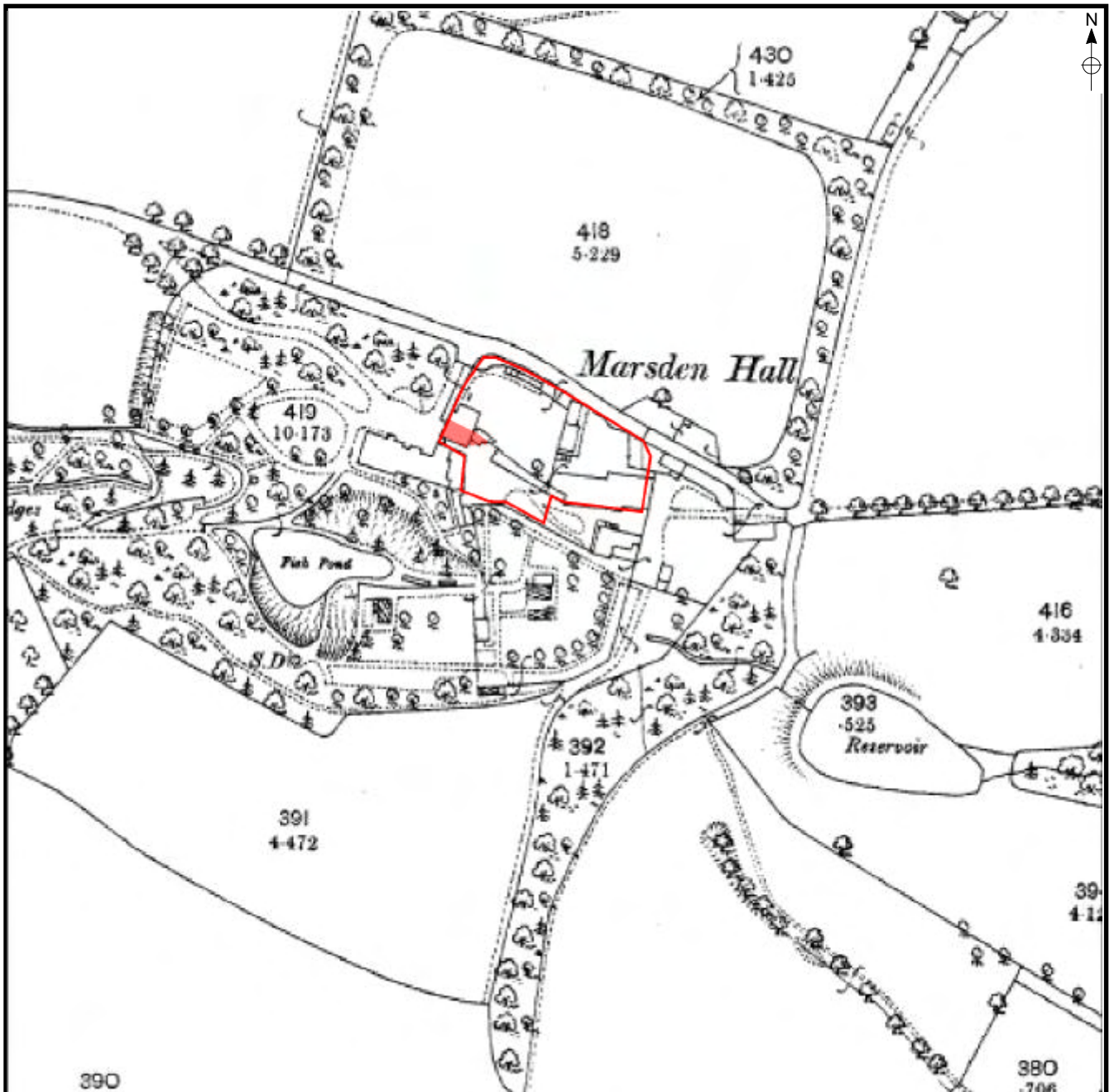
|   |  |                       |
|---|--|-----------------------|
|  | <b>TITLE:</b> Proposed Development Area. |                       |
| <b>SITE:</b> Marsden Park, Walton Lane, Nelson                                      | <b>FIGURE: 2.</b>                        | <b>Scale:</b> 1:2,500 |
| <b>CLIENT:</b> Candelisa  | <b>DRAWN BY:</b> KCH                     |                       |



|   |   |                       |
|---|---|-----------------------|
|  | <b>TITLE:</b> Designated Heritage Assets - Grade II Listed Buildings. |                       |
| <b>SITE:</b> Marsden Park, Walton Lane, Nelson                                      | <b>FIGURE:</b> 3.   | <b>Scale:</b> 1:2,500 |
| <b>CLIENT:</b> Candelisa  | <b>DRAWN BY:</b> KCH  |                       |



|   |   |                              |
|---|---|------------------------------|
|  | <p><b>TITLE:</b> Non-designated Heritage Assets - NMR and the Lancashire SMR.</p> |                              |
| <p><b>SITE:</b> Marsden Park, Walton Lane, Nelson</p>                               | <p><b>FIGURE:</b> 3.</p>  | <p><b>Scale:</b> 1:2,500</p> |
| <p><b>CLIENT:</b> Candelisa</p>   | <p><b>DRAWN BY:</b> KCH</p>   |                              |



**TITLE:** Extract from the 1893 First Edition Ordnance Survey Map.

**SITE:** Marsden Park, Walton Lane, Nelson

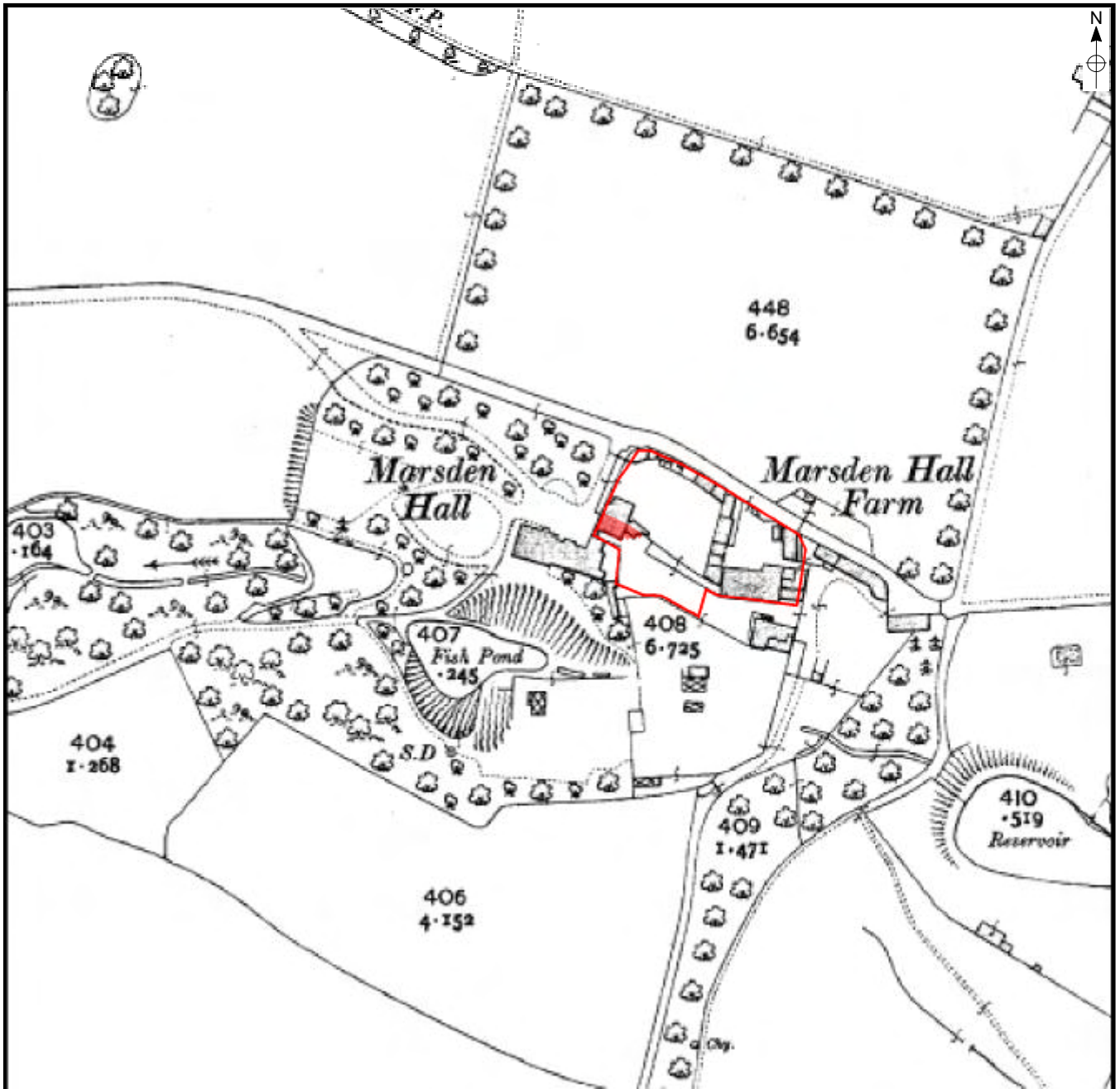
**FIGURE:** 5.

**Scale:** 1:2,500

**CLIENT:** Candelisa

**DRAWN BY:** KCH





**TITLE:** Extract from the 1912 Edition Ordnance Survey Map.

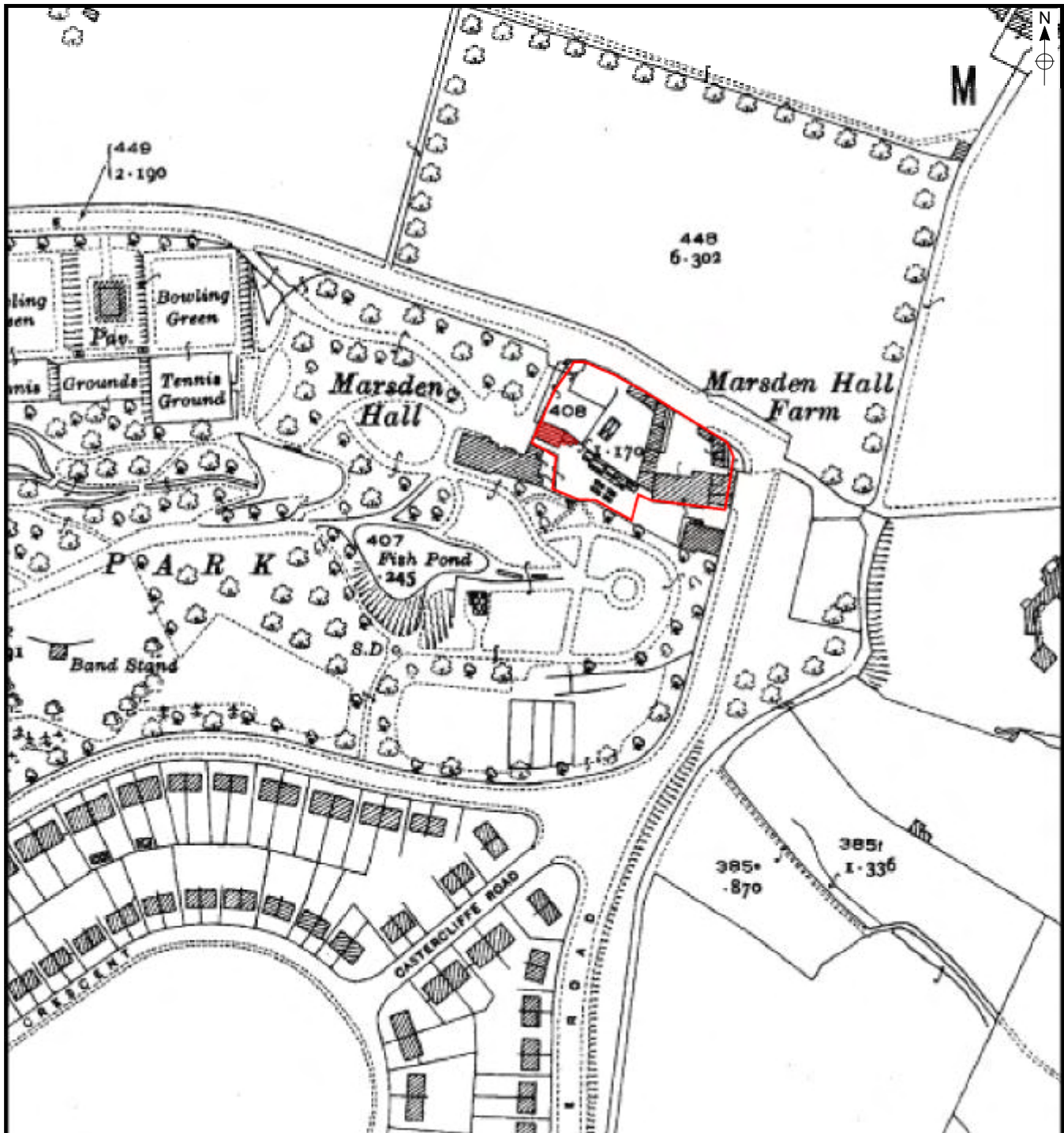
**SITE:** Marsden Park, Walton Lane, Nelson

**FIGURE:** 6.

**Scale:** 1:2,500

**CLIENT:** Candelisa

**DRAWN BY:** KCH




|   |   |                              |
|---|---|------------------------------|
|  <p>MAP Archaeological Practice Ltd<br/>Heritage Consultants</p> | <p><b>TITLE:</b> Extract from the 1932 Edition Ordnance Survey Map.</p> |                              |
| <p><b>SITE:</b> Marsden Park, Walton Lane, Nelson</p>   | <p><b>FIGURE:</b> 7.</p>  | <p><b>Scale:</b> 1:2,500</p> |
| <p><b>CLIENT:</b> Candelisa</p>   | <p><b>DRAWN BY:</b> KCH</p>   |                              |



Figure 8. Marsden Park Cottage: West Elevation.



Figure 9. Marsden Park Cottage: South Elevation.

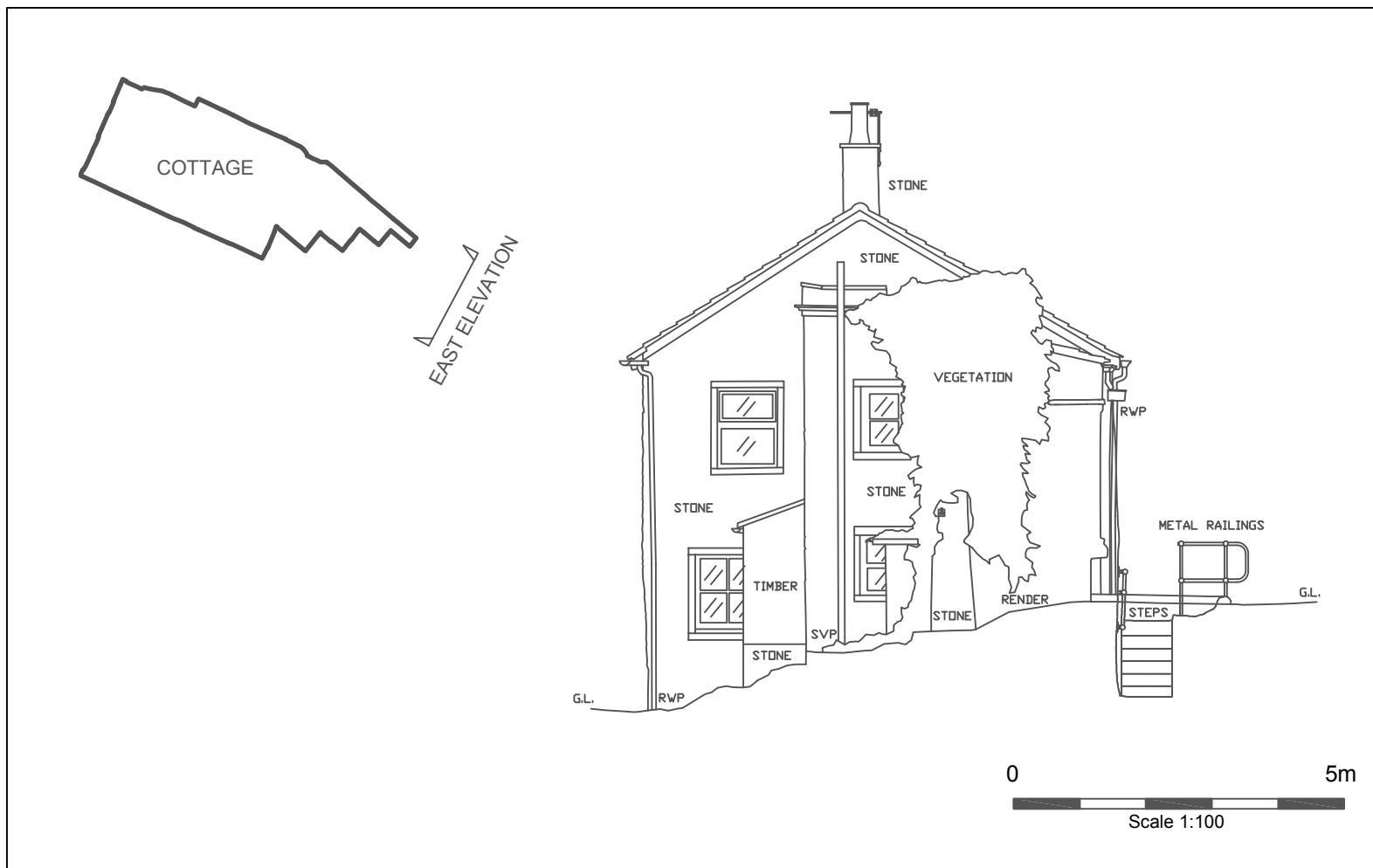


Figure 10. Marsden Park Cottage: East Elevation.

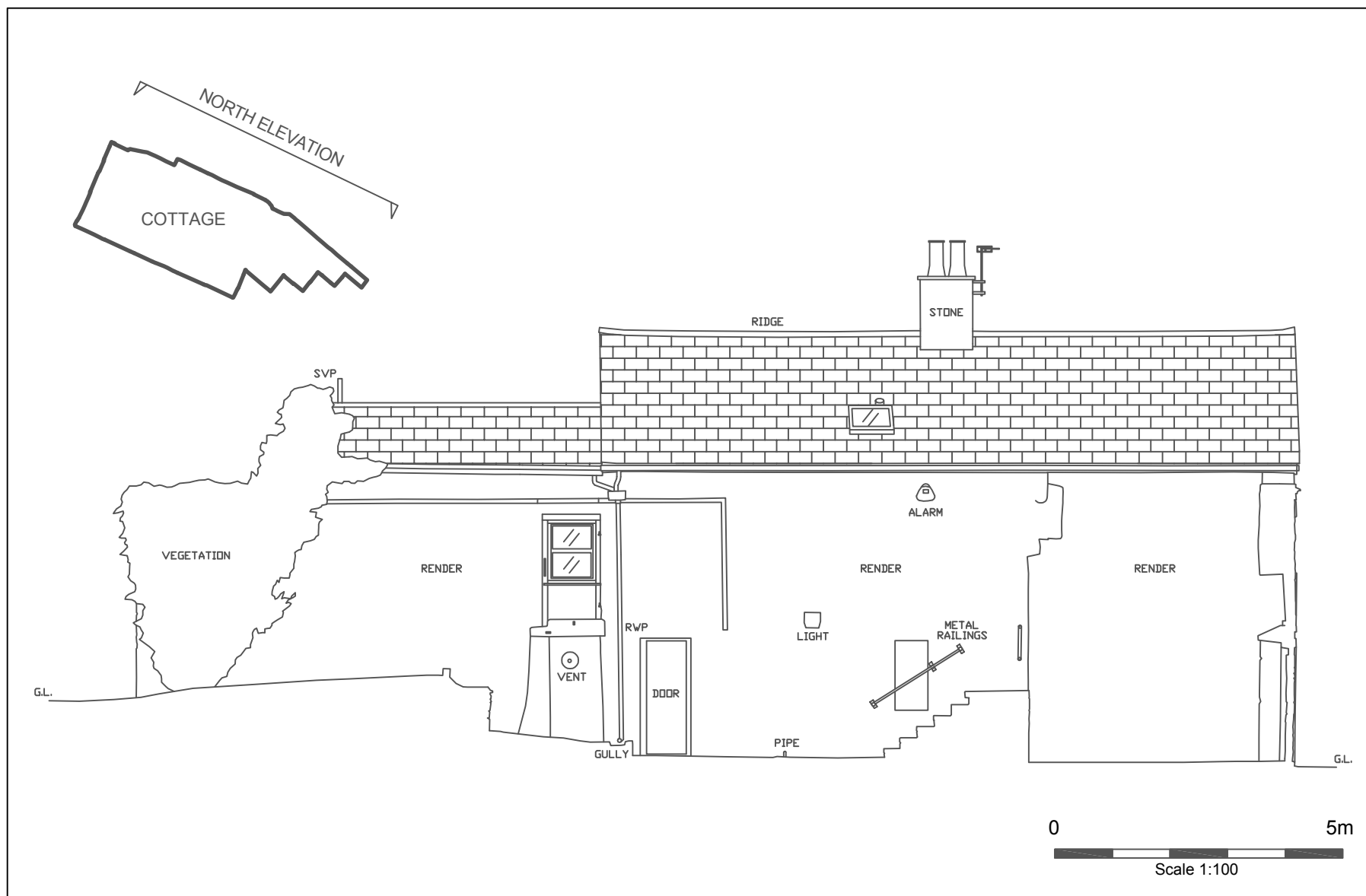


Figure 11. Marsden Park Cottage: North Elevation.

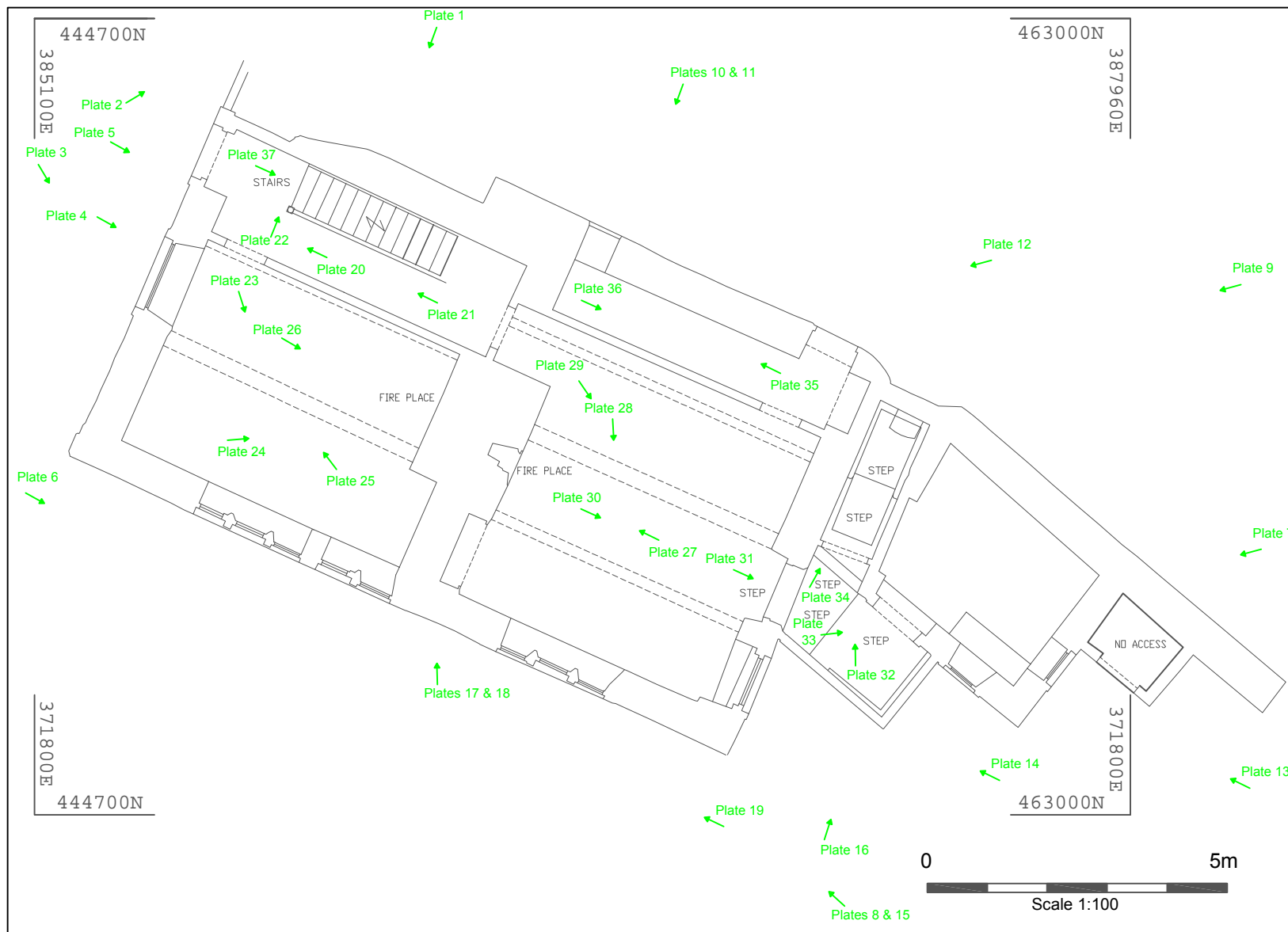


Figure 12. Marsden Park Cottage: Ground Floor Plan.



Figure 13. Marsden Park Cottage: First Floor Plan.





Plate 1. Marsden Park Cottage from Walton Lane. Facing South.



Plate 2. Marsden Park Boundary Wall. Facing North-east.



Plate 3. Marsden Park Cottage and Marsden Hall Cottage Exterior. Facing South-east.



Plate 4. Marsden Park Cottage Exterior. Facing East.



Plate 5. Marsden Park Cottage Exterior. Facing East.



Plate 6. Marsden Park Cottage Exterior Arch. Facing East.



Plate 7. Marsden Park Cottage and Marsden Hall Cottage Exterior. Facing West.



Plate 8. Marsden Park Cottage Exterior. Facing North-west.



Plate 9. Marsden Park Cottage Exterior. Facing South-west.



Plate 10. Marsden Park Cottage Exterior. Facing South.



Plate 11. Marsden Park Cottage Exterior. Facing South.



Plate 12. Marsden Park Cottage Exterior. Facing West.



Plate 13. Marsden Park Cottage Exterior. Facing North-west.



Plate 14. Marsden Park Cottage Exterior : Blocked Attic Window. Facing South.



Plate 15. Marsden Park Cottage Exterior. Facing North-west.



Plate 16. Marsden Park Cottage Exterior. Facing North.





Plate 17. Marsden Park Cottage Exterior. Facing North-west.



Plate 18. Marsden Park Cottage Exterior: Detail of Plaque. Facing North.



Plate 19. Marsden Park Cottage Exterior Arch. Facing North-west.



Plate 20. Marsden Park Cottage Interior. Ground Floor. Facing West.



Plate 21. Marsden Park Cottage Interior. Ground Floor. Facing West.



Plate 22. Marsden Park Cottage Interior. Ground Floor. Facing North.



Plate 23. Marsden Park Cottage Interior. Ground Floor. Facing South.



Plate 24. Marsden Park Cottage Interior. Ground Floor. Facing North-east.



Plate 25. Marsden Park Cottage Interior. Ground Floor. Facing West.

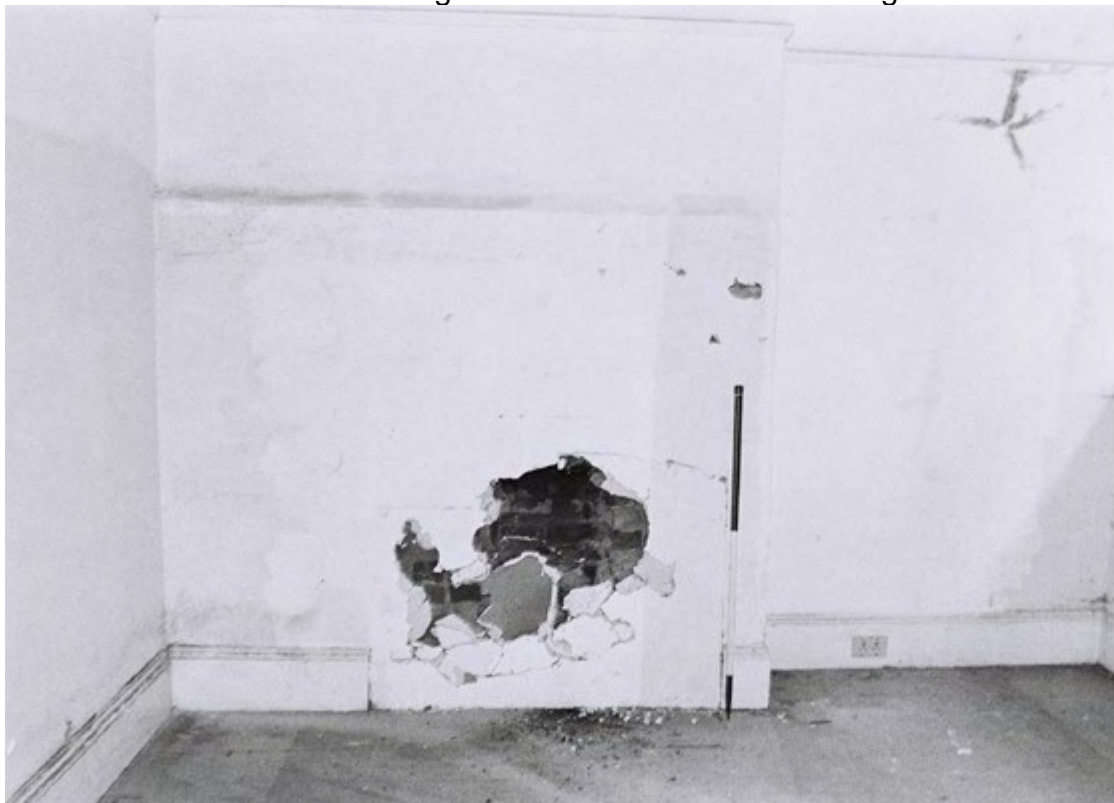


Plate 26. Marsden Park Cottage Interior. Ground Floor. Facing East.



Plate 27. Marsden Park Cottage Interior. Ground Floor. Facing West.



Plate 28. Marsden Park Cottage Interior. Ground Floor. Facing South.



Plate 29. Marsden Park Cottage Interior. Ground Floor. Facing South-east.



Plate 30. Marsden Park Cottage Interior. Ground Floor. Facing East.



Plate 31. Marsden Park Cottage Interior. Ground Floor. Facing East.



Plate 32. Marsden Park Cottage Interior. Ground Floor. Facing North.





Plate 33. Marsden Park Cottage Interior. Ground Floor. Facing North.



Plate 34. Marsden Park Cottage Interior. Ground Floor. Facing North.



Plate 35. Marsden Park Cottage Interior. Ground Floor. Facing West.



Plate 36. Marsden Park Cottage Interior. Ground Floor. Facing East.



Plate 37. Marsden Park Cottage Interior. Stairs. Facing East.



Plate 38. Marsden Park Cottage Interior. Stairs. Facing West.



Plate 39. Marsden Park Cottage Interior. First Floor. Facing South-west.

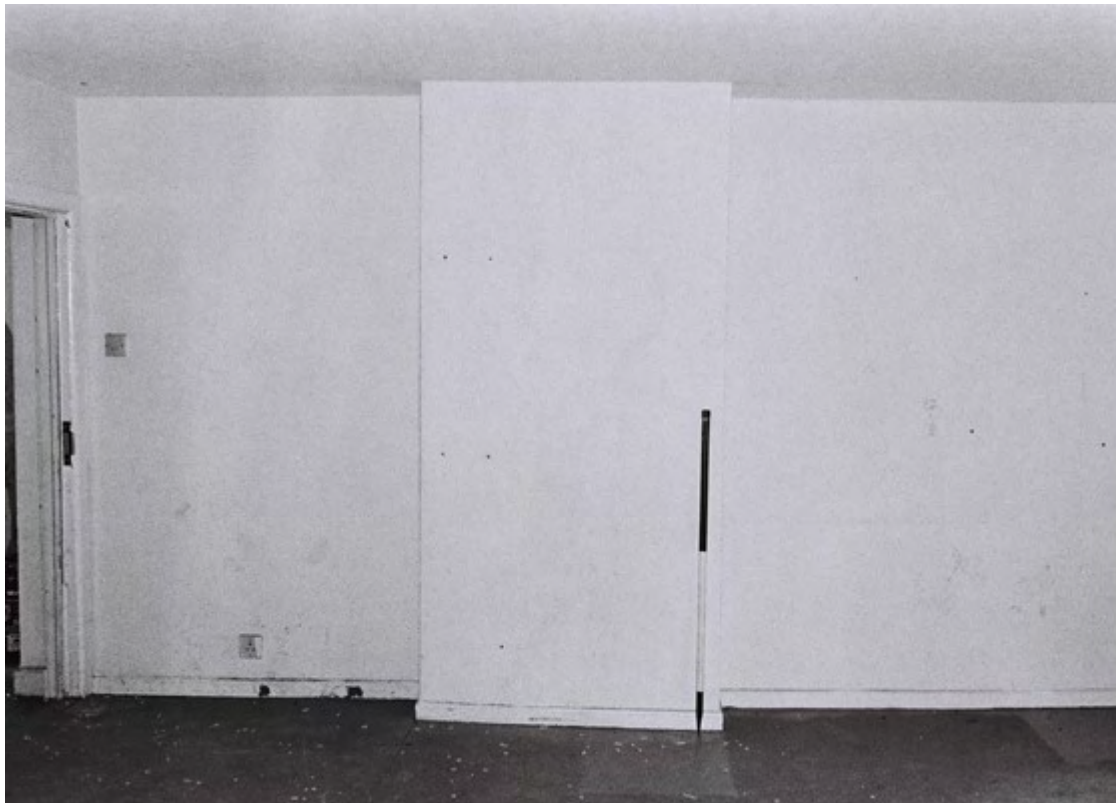


Plate 40. Marsden Park Cottage Interior. First Floor. Facing West.



Plate 41. Marsden Park Cottage Interior. First Floor. Facing North-east.



Plate 42. Marsden Park Cottage Interior. First Floor. Facing North-east.



Plate 43. Marsden Park Cottage Interior. First Floor. Facing North.



Plate 44. Marsden Park Cottage Interior. First Floor. Facing South.



Plate 45. Marsden Park Cottage Interior. First Floor. Facing North-west.



Plate 46. Marsden Park Cottage Interior. First Floor. Facing South.



Plate 47. Marsden Park Cottage Interior. First Floor. Facing South



Plate 48. Marsden Park Cottage Interior. First Floor. Facing South-east.





Plate 49. Marsden Park Cottage Interior. First Floor. Facing North.

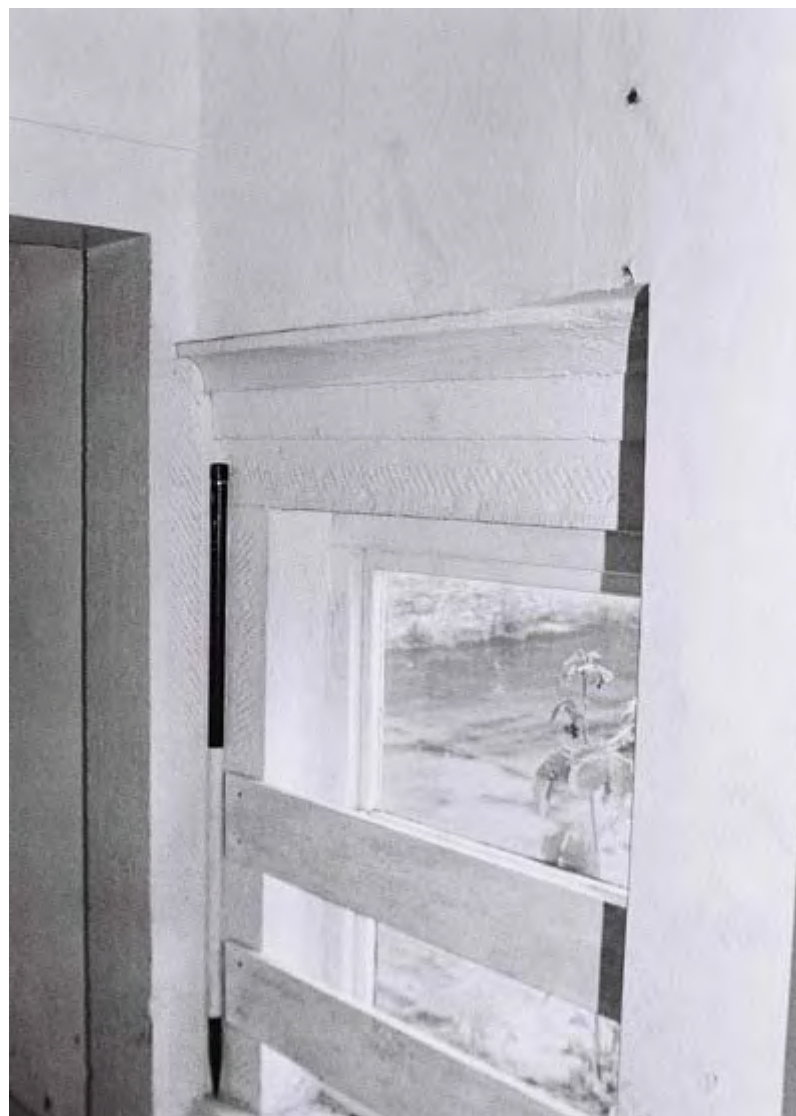


Plate 50. Marsden Park Cottage Interior. First Floor. Facing North.

## APPENDIX 1

**Marsden Park Cottage, Walton Road, Nelson, Lancashire (MAP 5.23.2014)  
SD 86041 37991**

### Photographic Archive Listing

**Monochrome Print (Ilford HP5 - Processed by CC Imaging Leeds)  
Camera: Nikon FG with 35mm Perspective Shift Lens**

| File      | Date       | Description   | Exposure | Aperture |
|-----------|------------|---|----------|----------|
| Film 1/01 | 13/08/2014 | Marsden Hall Cottage and Marsden Park Cottage: Exterior North-west Elevation. Facing South-east | 60       | f22      |
| Film 1/02 | 13/08/2014 | Marsden Park Cottage: Exterior North-west Elevation. Facing South-east                          | 60       | f11      |
| Film 1/03 | 13/08/2014 | Marsden Park Cottage: Exterior North-west Elevation. Facing South-east                          | 60       | f11      |
| Film 1/04 | 13/08/2014 | Marsden Park Cottage: Exterior North-west Elevation. Facing South-east                          | 60       | f11      |
| Film 1/05 | 13/08/2014 | Marsden Park: Boundary Wall. Facing North-east.   | 125      | f11      |
| Film 1/06 | 13/08/2014 | Marsden Park Cottage: Exterior North-west Elevation. Facing South-east                          | 250      | f11      |
| Film 1/07 | 13/08/2014 | View from Walton Lane. Facing South.  | 60       | f11      |
| Film 1/08 | 13/08/2014 | Marsden Park Cottage: Exterior South-east Elevation. Facing North-west                          | 60       | f11      |
| Film 1/09 | 13/08/2014 | Marsden Park Cottage: Exterior North-east Elevation. Facing West                                | 60       | f11      |
| Film 1/10 | 13/08/2014 | Marsden Park Cottage: Exterior North-east Elevation. Facing South-west                          | 125      | f16      |
| Film 1/11 | 13/08/2014 | Marsden Park Cottage: Exterior North-east Elevation. Facing South-west                          | 60       | f16      |
| Film 1/12 | 13/08/2014 | Marsden Park Cottage: Exterior North-east Elevation. Facing West                                | 125      | f16      |
| Film 1/13 | 13/08/2014 | Marsden Park Cottage: Exterior South-east Elevation. Facing North-west                          | 60       | f16      |
| Film 1/14 | 13/08/2014 | Marsden Hall Cottage and Marsden Park Cottage: Exterior South-east Elevation. Facing West       | 60       | f16      |
| Film 1/15 | 13/08/2014 | Marsden Park Cottage: Exterior South-west Elevation. Facing North-west                          | 60       | f16      |
| Film 1/16 | 13/08/2014 | Marsden Park Cottage: Exterior South-west Elevation. Facing North-west                          | 60       | f16      |
| Film 1/17 | 13/08/2014 | Marsden Park Cottage: Exterior South-west Elevation. Facing North                               | 60       | f16      |
| Film 1/18 | 13/08/2014 | Marsden Park Cottage: Exterior South-west Elevation. Facing North                               | 60       | f16      |
| Film 1/19 | 13/08/2014 | Marsden Park Cottage: Exterior South-west Elevation. Facing North-west                          | 30       | f16      |
| Film 1/20 | 13/08/2014 | Marsden Park Cottage: Exterior South-west Elevation. Facing North                               | 30       | f16      |
| Film 1/21 | 13/08/2014 | Marsden Park Cottage: Exterior South-east Elevation. Facing North-west                          | 30       | f16      |

|           |            |   |    |              |
|-----------|------------|---|----|--------------|
| Film 1/22 | 13/08/2014 | Marsden Park Cottage: Interior First Floor.<br>Facing North-west  | 60 | f5.6 (Flash) |
| Film 1/23 | 13/08/2014 | Marsden Park Cottage: Interior First Floor.<br>Facing South-east  | 60 | f5.6 (Flash) |
| Film 1/24 | 13/08/2014 | Marsden Park Cottage: Interior First Floor.<br>Facing North       | 60 | f5.6 (Flash) |
| Film 1/25 | 13/08/2014 | Marsden Park Cottage: Interior First Floor.<br>Facing North-west  | 60 | f5.6 (Flash) |
| Film 1/26 | 13/08/2014 | Marsden Park Cottage: Interior First Floor.<br>Facing South-east  | 60 | f5.6 (Flash) |
| Film 1/27 | 13/08/2014 | Marsden Park Cottage: Interior First Floor.<br>Facing South-west  | 60 | f5.6 (Flash) |
| Film 1/28 | 13/08/2014 | Marsden Park Cottage: Interior First Floor.<br>Facing North-east  | 60 | f5.6 (Flash) |
| Film 1/29 | 13/08/2014 | Marsden Park Cottage: Interior First Floor.<br>Facing South-east  | 60 | f5.6 (Flash) |
| Film 1/30 | 13/08/2014 | Marsden Park Cottage: Interior First Floor.<br>Facing South-west  | 60 | f5.6 (Flash) |
| Film 1/31 | 13/08/2014 | Marsden Park Cottage: Interior First Floor.<br>Facing North-east  | 60 | f5.6 (Flash) |
| Film 1/32 | 13/08/2014 | Marsden Park Cottage: Interior First Floor.<br>Facing North       | 60 | f5.6 (Flash) |
| Film 1/33 | 13/08/2014 | Marsden Park Cottage: Interior First Floor.<br>Facing North-west  | 60 | f5.6 (Flash) |
| Film 1/34 | 13/08/2014 | Marsden Park Cottage: Interior First Floor.<br>Facing North-west  | 60 | f5.6 (Flash) |
| Film 1/35 | 13/08/2014 | Marsden Park Cottage: Interior First Floor.<br>Facing North-west  | 60 | f5.6 (Flash) |
| Film 1/36 | 13/08/2014 | Marsden Park Cottage: Interior First Floor.<br>Facing North-west  | 60 | f5.6 (Flash) |
| Film 1/37 | 13/08/2014 | Marsden Park Cottage: Interior First Floor.<br>Facing North-west  | 60 | f5.6 (Flash) |
| Film 2/02 | 13/08/2014 | Marsden Park Cottage: Interior First Floor.<br>Facing North-west  | 60 | f5.6 (Flash) |
| Film 2/03 | 13/08/2014 | Marsden Park Cottage: Interior First Floor.<br>Facing North-east  | 60 | f5.6 (Flash) |
| Film 2/04 | 13/08/2014 | Marsden Park Cottage: Interior First Floor.<br>Facing South-west  | 60 | f5.6 (Flash) |
| Film 2/05 | 13/08/2014 | Marsden Park Cottage: Interior First Floor.<br>Facing East        | 60 | f5.6 (Flash) |
| Film 2/06 | 13/08/2014 | Marsden Park Cottage: Interior First Floor.<br>Facing South       | 60 | f5.6 (Flash) |
| Film 2/07 | 13/08/2014 | Marsden Park Cottage: Interior First Floor.<br>Facing North-west  | 60 | f5.6 (Flash) |
| Film 2/08 | 13/08/2014 | Marsden Park Cottage: Interior First Floor.<br>Facing North       | 60 | f5.6 (Flash) |
| Film 2/09 | 13/08/2014 | Marsden Park Cottage: Interior Ground<br>Floor. Facing South-east | 60 | f5.6 (Flash) |
| Film 2/10 | 13/08/2014 | Marsden Park Cottage: Interior Ground<br>Floor. Facing East       | 60 | f5.6 (Flash) |
| Film 2/11 | 13/08/2014 | Marsden Park Cottage: Interior Ground<br>Floor. Facing North-west | 60 | f5.6 (Flash) |
| Film 2/12 | 13/08/2014 | Marsden Park Cottage: Interior Ground<br>Floor. Facing South-east | 60 | f5.6 (Flash) |
| Film 2/13 | 13/08/2014 | Marsden Park Cottage: Interior Ground<br>Floor. Facing North-west | 60 | f5.6 (Flash) |

|           |            |  |    |              |
|-----------|------------|--|----|--------------|
| Film 2/14 | 13/08/2014 | Marsden Park Cottage: Interior Ground Floor. Facing North-west                   | 60 | f5.6 (Flash) |
| Film 2/15 | 13/08/2014 | Marsden Park Cottage: Interior Ground Floor. Facing East                         | 60 | f5.6 (Flash) |
| Film 2/16 | 13/08/2014 | Marsden Park Cottage: Interior Ground Floor. Facing South-east                   | 60 | f5.6 (Flash) |
| Film 2/17 | 13/08/2014 | Marsden Park Cottage: Interior Ground Floor. Facing North-west                   | 60 | f5.6 (Flash) |
| Film 2/18 | 13/08/2014 | Marsden Park Cottage: Interior Ground Floor. Facing North-east                   | 60 | f5.6 (Flash) |
| Film 2/19 | 13/08/2014 | Marsden Park Cottage: Interior Ground Floor. Facing South-east                   | 60 | f5.6 (Flash) |
| Film 2/20 | 13/08/2014 | Marsden Park Cottage: Interior Ground Floor. Facing East                         | 60 | f5.6 (Flash) |
| Film 2/21 | 13/08/2014 | Marsden Park Cottage: Interior Ground Floor. Facing North-west                   | 60 | f5.6 (Flash) |
| Film 2/22 | 13/08/2014 | Marsden Park Cottage: Interior Ground Floor. Facing South                        | 60 | f5.6 (Flash) |
| Film 2/23 | 13/08/2014 | Marsden Park Cottage: Interior Ground Floor. Facing East                         | 60 | f5.6 (Flash) |
| Film 2/24 | 13/08/2014 | Marsden Park Cottage: Interior Ground Floor. Facing North                        | 60 | f5.6 (Flash) |
| Film 2/25 | 13/08/2014 | Marsden Park Cottage: Interior Ground Floor. Facing North-east                   | 60 | f5.6 (Flash) |
| Film 2/26 | 13/08/2014 | Marsden Park Cottage: Interior Ground Floor. Facing North-east                   | 60 | f5.6 (Flash) |
| Film 2/27 | 13/08/2014 | Marsden Park Cottage: Interior Ground Floor. Facing North-west                   | 60 | f5.6 (Flash) |
| Film 2/28 | 13/08/2014 | Marsden Park Cottage: Interior Ground Floor. Facing North                        | 60 | f5.6 (Flash) |
| Film 2/29 | 13/08/2014 | Marsden Park Cottage: Interior Ground Floor. Facing North-west                   | 60 | f5.6 (Flash) |
| Film 2/30 | 13/08/2014 | Marsden Park Cottage: Interior Ground Floor. Facing South-east                   | 60 | f5.6 (Flash) |
| Film 2/31 | 13/08/2014 | Marsden Park Cottage: Interior Ground Floor. Facing North                        | 60 | f5.6 (Flash) |
| Film 2/32 | 13/08/2014 | Marsden Park Cottage: Interior First Floor. Facing North                         | 60 | f5.6 (Flash) |
| Film 2/33 | 13/08/2014 | Marsden Park Cottage: Interior First Floor. Facing North-west                    | 60 | f5.6 (Flash) |
| Film 2/34 | 13/08/2014 | Marsden Park Cottage: Interior First Floor. Facing South-east                    | 60 | f5.6 (Flash) |
| Film 2/35 | 13/08/2014 | Marsden Park Cottage: Exterior South-east Elevation (Detail). Facing north-west. | 60 | f11          |

## Digital Shots

### Camera: Pentax WG-1 (14 Megapixel)

| File    | Date       | Description  |
|---------|------------|--|
| IMG4058 | 13/08/2014 | Marsden Hall Cottage and Marden Park Cottage: Exterior North-west Elevation. Facing South-east |
| IMG4059 | 13/08/2014 | Marden Park Cottage: Exterior North-west Elevation. Facing South-east                          |

|          |            |  |
|----------|------------|--|
| IMGP4060 | 13/08/2014 | Marden Park Cottage: Exterior North-west Elevation. Facing South-east                    |
| IMGP4061 | 13/08/2014 | Marden Park Cottage: Exterior North-west Elevation. Facing South-east                    |
| IMGP4062 | 13/08/2014 | Mardesn Park: Boundary Wall. Facing North-east.  |
| IMGP4063 | 13/08/2014 | Marden Park Cottage: Exterior North-west Elevation. Facing South-east                    |
| IMGP4064 | 13/08/2014 | View from Walton Lane. Facing South.   |
| IMGP4065 | 13/08/2014 | Marden Park Cottage: Exterior South-east Elevation. Facing North-west                    |
| IMGP4066 | 13/08/2014 | Marden Park Cottage: Exterior North-east Elevation. Facing West                          |
| IMGP4067 | 13/08/2014 | Marden Park Cottage: Exterior North-east Elevation. Facing South-west                    |
| IMGP4068 | 13/08/2014 | Marden Park Cottage: Exterior North-east Elevation. Facing South-west                    |
| IMGP4069 | 13/08/2014 | Marden Park Cottage: Exterior North-east Elevation. Facing West                          |
| IMGP4070 | 13/08/2014 | Marden Park Cottage: Exterior South-east Elevation. Facing North-west                    |
| IMGP4071 | 13/08/2014 | Marden Hall Cottage and Marsden Park Cottage: Exterior South-east Elevation. Facing West |
| IMGP4072 | 13/08/2014 | Marden Park Cottage: Exterior South-west Elevation. Facing North-west                    |
| IMGP4073 | 13/08/2014 | Marden Park Cottage: Exterior South-west Elevation. Facing North-west                    |
| IMGP4074 | 13/08/2014 | Marden Park Cottage: Exterior South-west Elevation. Facing North                         |
| IMGP4075 | 13/08/2014 | Marden Park Cottage: Exterior South-west Elevation. Facing North                         |
| IMGP4076 | 13/08/2014 | Marden Park Cottage: Exterior South-west Elevation. Facing North-west                    |
| IMGP4077 | 13/08/2014 | Marden Park Cottage: Exterior South Elevation. Facing West                               |
| IMGP4078 | 13/08/2014 | Marden Park Cottage: Interior First Floor. Facing East                                   |
| IMGP4080 | 13/08/2014 | Marsden Park Cottage: Interior First Floor. Facing West                                  |
| IMGP4081 | 13/08/2014 | Marsden Park Cottage: Interior First Floor. Facing Souyth-east                           |
| IMGP4082 | 13/08/2014 | Marsden Park Cottage: Interior First Floor. Facing North-west                            |
| IMGP4083 | 13/08/2014 | Marsden Park Cottage: Interior First Floor. Facing West                                  |
| IMGP4084 | 13/08/2014 | Marsden Park Cottage: Interior First Floor. Facing South                                 |
| IMGP4085 | 13/08/2014 | Marsden Park Cottage: Interior First Floor. Facing North                                 |
| IMGP4086 | 13/08/2014 | Marsden Park Cottage: Interior First Floor. Facing North                                 |
| IMGP4087 | 13/08/2014 | Marsden Park Cottage: Interior First Floor. Facing South-east                            |
| IMGP4088 | 13/08/2014 | Marsden Park Cottage: Interior First Floor. Facing South                                 |

|          |            |   |
|----------|------------|---|
| IMGP4089 | 13/08/2014 | Marsden Park Cottage: Interior First Floor.<br>Facing North       |
| IMGP4090 | 13/08/2014 | Marsden Park Cottage: Interior First Floor.<br>Facing North       |
| IMGP4091 | 13/08/2014 | Marsden Park Cottage: Interior First Floor.<br>Facing North       |
| IMGP4092 | 13/08/2014 | Marsden Park Cottage: Interior First Floor.<br>Facing West        |
| IMGP4093 | 13/08/2014 | Marsden Park Cottage: Interior First Floor.<br>Facing North-west  |
| IMGP4094 | 13/08/2014 | Marsden Park Cottage: Interior First Floor.<br>Facing North-west  |
| IMGP4095 | 13/08/2014 | Marsden Park Cottage: Interior First Floor.<br>Facing South       |
| IMGP4096 | 13/08/2014 | Marsden Park Cottage: Interior First Floor.<br>Facing North       |
| IMGP4097 | 13/08/2014 | Marsden Park Cottage: Interior First Floor.<br>Facing East        |
| IMGP4098 | 13/08/2014 | Marsden Park Cottage: Interior First Floor.<br>Facing North-east  |
| IMGP4099 | 13/08/2014 | Marsden Park Cottage: Interior First Floor.<br>Facing North-west  |
| IMGP4100 | 13/08/2014 | Marsden Park Cottage: Interior First Floor.<br>Facing North       |
| IMGP4101 | 13/08/2014 | Marsden Park Cottage: Interior First Floor.<br>Facing South-east  |
| IMGP4102 | 13/08/2014 | Marsden Park Cottage: Interior Ground<br>Floor. Facing South-east |
| IMGP4103 | 13/08/2014 | Marsden Park Cottage: Interior Ground<br>Floor. Facing North-west |
| IMGP4104 | 13/08/2014 | Marsden Park Cottage: Interior Ground<br>Floor. Facing East       |
| IMGP4105 | 13/08/2014 | Marsden Park Cottage: Interior Ground<br>Floor. Facing South-east |
| IMGP4106 | 13/08/2014 | Marsden Park Cottage: Interior Ground<br>Floor. Facing West       |
| IMGP4107 | 13/08/2014 | Marsden Park Cottage: Interior Ground<br>Floor. Facing North      |
| IMGP4108 | 13/08/2014 | Marsden Park Cottage: Interior Ground<br>Floor. Facing North-east |
| IMGP4109 | 13/08/2014 | Marsden Park Cottage: Interior Ground<br>Floor. Facing North      |
| IMGP4110 | 13/08/2014 | Marsden Park Cottage: Interior Ground<br>Floor. Facing North      |
| IMGP4111 | 13/08/2014 | Marsden Park Cottage: Interior Ground<br>Floor. Facing North-west |
| IMGP4112 | 13/08/2014 | Marsden Park Cottage: Interior Ground<br>Floor. Facing South-east |
| IMGP4113 | 13/08/2014 | Marsden Park Cottage: Interior Ground<br>Floor. Facing East       |
| IMGP4114 | 13/08/2014 | Marsden Park Cottage: Interior Ground<br>Floor. Facing South      |
| IMGP4115 | 13/08/2014 | Marsden Park Cottage: Interior Ground<br>Floor. Facing North-west |
| IMGP4116 | 13/08/2014 | Marsden Park Cottage: Interior Ground<br>Floor. Facing North-east |

|          |            |  |
|----------|------------|--|
| IMGP4117 | 13/08/2014 | Marsden Park Cottage: Interior Ground Floor. Facing South-east |
| IMGP4118 | 13/08/2014 | Marsden Park Cottage: Interior Ground Floor. Facing South      |
| IMGP4119 | 13/08/2014 | Marsden Park Cottage: Interior Ground Floor. Facing West       |
| IMGP4120 | 13/08/2014 | Marsden Park Cottage: Interior Ground Floor. Facing North      |
| IMGP4121 | 13/08/2014 | Marsden Park Cottage: Interior Ground Floor. Facing North-east |
| IMGP4122 | 13/08/2014 | Marsden Park Cottage: Interior First Floor. Facing North-west  |
| IMGP4123 | 13/08/2014 | Marsden Park Cottage: Interior First Floor. Facing West        |
| IMGP4124 | 13/08/2014 | Marsden Park Cottage: Interior GroundFloor. Facing North       |
| IMGP4126 | 13/08/2014 | Marsden Park Cottage: Interior GroundFloor. Facing East        |
| IMGP4127 | 13/08/2014 | Marsden Park Cottage Interior Ground Floor. Facing West.       |
| IMGP4128 | 13/08/2014 | Marsden Park Cottage Interior Ground Floor. Facing East.       |
| IMGP4129 | 13/08/2014 | Marsden Park Cottage Interior Ground Floor. Facing East.       |
| IMGP4130 | 13/08/2014 | Marsden Park Cottage Interior Ground Floor. Facing East.       |
| IMGP4131 | 13/08/2014 | Cottage. Facing West.  |
| IMGP4132 | 13/08/2014 | Barn. Facing South.  |
| IMGP4133 | 13/08/2014 | Barn. Facing South.  |
| IMGP4134 | 13/08/2014 | Boundary wall. Facing West.                                    |
| IMGP4135 | 13/08/2014 | Cottage. Facing North.   |
| IMGP4136 | 13/08/2014 | Car Park Area. Facing West.                                    |
| IMGP4137 | 13/08/2014 | Marsden Park Cottage. Facing West.                             |
| IMGP4138 | 13/08/2014 | Barn. Facing East.   |
| IMGP4139 | 13/08/2014 | Cottage. Facing East.  |
| IMGP4140 | 13/08/2014 | Site. Facing East.   |
| IMGP4141 | 13/08/2014 | Site. Facing West.   |
| IMGP4142 | 13/08/2014 | Barn. Facing West.   |
| IMGP4143 | 13/08/2014 | Walton Lane. Facing North-west.                                |

