



Key:
□ Site

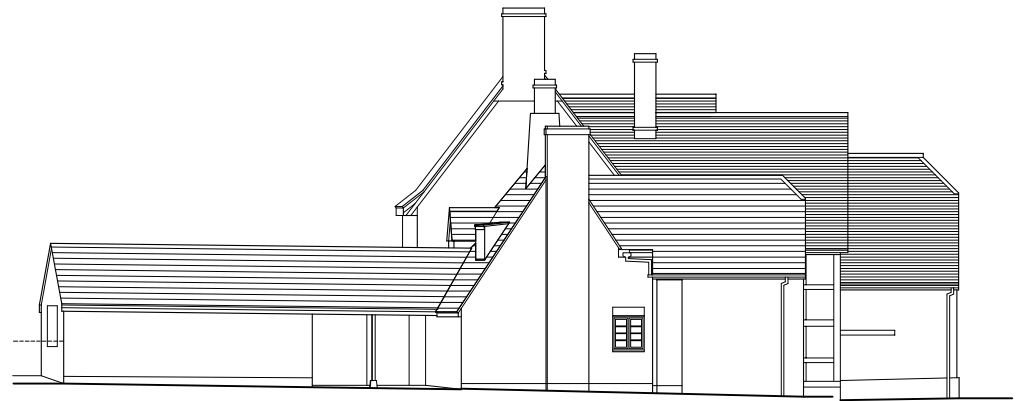
Figure 5. OS 2nd series map 1899



Figure 6. Phased plan of site



Elevation 1



Elevation 2



Elevation 3



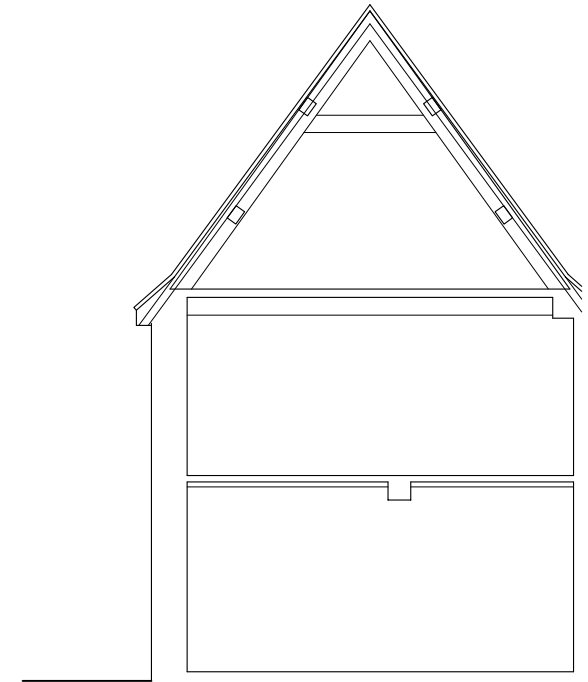
Elevation 4



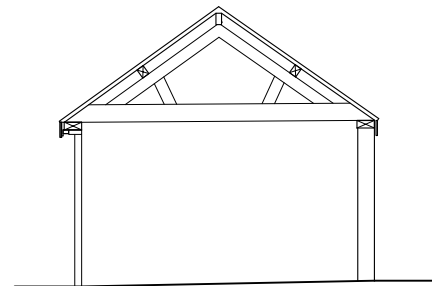
Figure 7. Elevations



Section A-A



Section B-B



Section C-C



Figures 8. Sections A-C



Plate 1. West Elevation of Pound Farm in 1842 (BRO D/EX 1028/210/S1-7)



Plate 2. North elevations of Pound Farm



Plate 3. East & south elevations of Pound Farm



Plate 4. West elevation of Pound Farm



Plate 5. South wall of central range



Plate 6. West elevation of Pound Farm out building



Plate 7. South elevation of Pound Farm out building



Plate 8. South wall of central range



Plate 9. Southeast door on central range



Plate 10. Hall door



Plate 11. Hall, door & windows



Plate 12. Hall ceiling details



Plate 13. Hall ceiling details



Plate 14. Hall, east stairs (modern)



Plate 15. Kitchen



Plate 16. Living, room phase 3,
window details



Plate 17. Living room, phase 3, ceiling details



Plate 18. Living room, phase 3,
door details



Plate 19. Living room, phase 3, fireplace details



Plate 20. Living room, phase 4, ceiling details



Plate 21. Living room, phase 4, ceiling details



Plate 22. Central range, phase 1, timbers



Plate 23. Bedroom, phase 4, fireplace details



Plate 24. Bedroom, phase 4, timber framing details



Plate 25. Bedroom, phase 6, north room west wing, window details



Plate 26. Stairs in stair tower



Plate 27. Bedroom, phase 3, panelling



Plate 28. Blocked window, stair tower



Plate 29. Upper part of stair tower



Plate 30. Trusses in garret



Plate 31. King stud in attic of central range



Plate 32. Timber framing in attic, west wing



Plate 33. Rafters in attic, west wing