



JOHN MOORE HERITAGE SERVICES

**ARCHAEOLOGICAL WATCHING BRIEF**

**AT**

**HUNTS FARM,**

**HARPSDEN BOTTOM, HARPSDEN RG9 4HY**

**NGR SU 7442 8065**

**FEBRUARY 2021**

**REPORT PREPARED BY** Stephanie N. Duensing

**ILLUSTRATION BY** Stephanie N. Duensing

**EDITED BY** Gavin Davis

**AUTHORISED BY** John Moore

**FIELDWORK** Richard Knight, Tom Rose-Jones  
and Stephanie N. Duensing

**FIELDWORK DATE** 5-7<sup>th</sup> Aug 2019, 10<sup>th</sup> Aug 2019  
3<sup>rd</sup> Sept 2019, 23<sup>rd</sup> July 2020

**REPORT ISSUED** 23<sup>rd</sup> February 2021

**ENQUIRES TO** John Moore Heritage Services  
Unit 16 Wheatley Business Centre  
Wheatley  
Oxfordshire  
OX33 1XW

Tel: 01865 358300  
Email: [info@jmheritageservices.co.uk](mailto:info@jmheritageservices.co.uk)

**JMHS Project No:** 4048  
**OASIS No:** johnmoor1-415713  
**Site Code:** HNHF 19  
**Archive Location:** A copy of the digital archive is maintained by  
John Moore Heritage Services (ID 4048).  
Digitised copies of the primary records are  
available on OASIS.



**CONTENTS**

	<b>Page</b>
<b>SUMMARY</b>	<i>i</i>
<b>1 INTRODUCTION</b>	<b>1</b>
1.1 Site Location	1
1.2 Planning Background	1
1.3 Archaeological Background	1
<b>2 AIMS OF THE INVESTIGATION</b>	<b>4</b>
<b>3 STRATEGY</b>	<b>5</b>
3.1 Research Design	5
3.2 Methodology	5
<b>4 RESULTS</b>	<b>5</b>
4.1 Archaeologically Positive Areas	6
4.2 Archaeologically Negative Areas	9
<b>5 DISCUSSION</b>	<b>12</b>
<b>6 ARCHIVE</b>	<b>13</b>
<b>7 BIBLIOGRAPHY</b>	<b>13</b>
 <b>FIGURES AND PLATES</b>	
Figure 1. Site Location	2
Figure 2. Area 1, Area 3-5	7
Figure 3. Area 2 and Sections	8
Plate 1. Area 1, foundation footer <b>32</b>	6
Plate 2. Area 3, S.02	9
Plate 3. Area 3, S.04	10
Plate 4. Area 4, S. 15	11
Plate 5. Area 5, S.19	12
 <b>APPENDICES</b>	
Appendix 1. Primary Records	14
Appendix 2. OASIS Report Form	55

**SUMMARY**

*John Moore Heritage Services carried out an archaeological watching brief at Hunts Farm, Harpsden Bottom, Harpsden, Oxfordshire (NGR SU 7442 8065). The proposed development is located within an area of archaeological interest within a late medieval or early post medieval farm. The extension itself is attached to a grade II listed building thought to date from the 15th or 16th centuries. A building survey undertaken in the 1980s has shown that it is a rare surviving cruck and truss building.*

*Except for a single masonry and concrete footer abutting the rear of the cottage, no archaeological evidence was encountered. The previous farmyard showed heavy disturbance associated with its previous modern farm use.*



## 1 INTRODUCTION

### 1.1 Site Location (Figure 1)

The development site is located to the south west of Henley-on-Thames and west of Harpsden Bottom, on the north side of the main road through Hunts Green (SU 7442 8065).

The site lies at approximately 46.5m aOD and the underlying geology is shown as chalk overlain by Clay, Silt Sand and Gravel deposits on the southern edge of the site. The site is currently in residential use.

### 1.2 Planning Background

South Oxfordshire District Council has granted planning permission for **refurbishment and extension of existing farm house and conversion of two farm out-buildings and yard to residential use, including amenity garden space and off-street parking. (As amended by revised drawings submitted 29 November 2016) (P16/S2329/FUL)**. Due to the potential of the site to contain archaeological remains, two conditions were attached:

*12 Prior to any demolition and the commencement of the development a professional archaeological organisation acceptable to the Local Planning Authority shall prepare an Archaeological Written Scheme of Investigation, relating to the application site area, which shall be submitted to and approved in writing by the Local Planning Authority.*

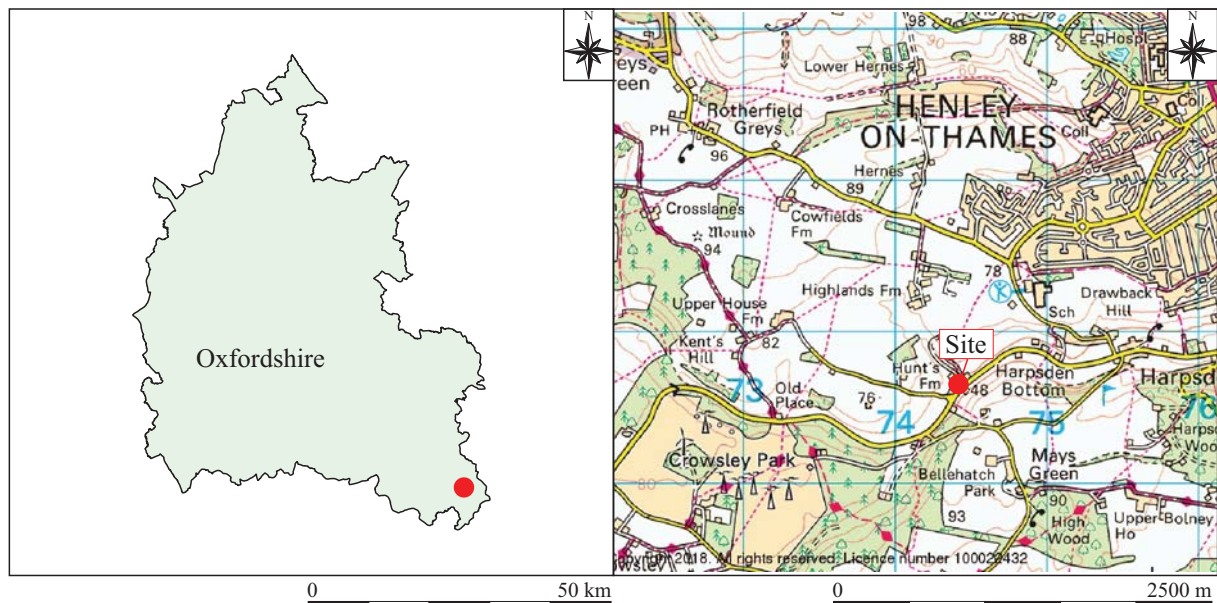
*Reason: To safeguard the recording of archaeological matters within the site in accordance with the NPPF (2012).*

*13 Following the approval of the Written Scheme of Investigation referred to in condition 12, and prior to any demolition on the site and the commencement of the development (other than in accordance with the agreed Written Scheme of Investigation), a staged programme of archaeological evaluation and mitigation shall be carried out by the commissioned archaeological organisation in accordance with the approved Written Scheme of Investigation. The programme of work shall include all processing, research and analysis necessary to produce an accessible and useable archive and a full report for publication which shall be submitted to the Local Planning Authority.*

*Reason - To safeguard the identification, recording, analysis and archiving of heritage assets before they are lost and to advance understanding of the heritage assets in their wider context through publication and dissemination of the evidence in accordance with the NPPF (2012).*

### 1.3 Archaeological Background

The proposed development is located within an area of archaeological interest within a late medieval or early post medieval farm. The extension itself is attached to a grade II listed building thought to date from the 15<sup>th</sup> or 16<sup>th</sup> centuries. A building survey undertaken in the 1980s has shown that it is a rare surviving cruck and truss



Ordnance Survey (c) Crown Copyright 2017. All rights reserved. Licence number 100022432

Key Site boundary Watching Brief trenches  
 Archaeological features

Figure 1: Site location

building and was certainly present in 1586 when a map was drawn up for the lord of the Manor. Archaeological deposits relating to this farmhouse such as domestic rubbish pits are likely to survive on the site. It is also possible that this farmhouse replaced an earlier structure and archaeological deposits relating to this could also survive on the site (CAS 2018).

Hunt's Farm is of significant local historic importance. The following extracts are taken from "A History of the County of Oxford: Volume 16" and provide an important background of the Harpsden Valley and specifically Hunt's Farm (Purple Architects 2016):

"Harpsden is a Rural parish just south of Henley, stretching from the Thames in the east to higher wooded ground 3¾ miles (6 km) west, and including the largely deserted settlement of Bolney. The 20th century saw a limited amount of development in the south-east close to Shiplake, but most of the parish remains sparsely populated, with isolated farms and houses spread along the Harpsden valley and on the plateau above...Until the end of the 19th century Harpsden supported a farming population, but it has subsequently been subject to ongoing gentrification."

"The basic road pattern was similar in the 16th century, and probably much earlier. The Harpsden valley in particular is likely to have been a very early communication route. In the Roman period it would have formed a natural way for inhabitants of sites at Harpsden Wood and High Wood to travel to and from the main Silchester–St Albans (Verulamium) road east of the river."

"By the late Middle Ages, settlement must have been everywhere very thinly spread. The pattern of settlement in the parish's northern half was presumably similar to that shown on an estate map of 1586: isolated farms at Upper House and Bottom House in the west; three more at Hunts Green in the Harpsden valley (the only area which might be called a hamlet); the rectory house; a farm at Lucys with a smallholding on the other side of the road; and Harpsden Court with its attendant farm."

"Harpsden, like neighbouring parishes, contains a variety of buildings of many periods, sizes and styles. (fn. 76) Sixteenth- to 19th-century farmhouses and country residences are thinly scattered throughout the parish. A few cottages and smaller houses of similar date are located mainly in a handful of loose groups in the Harpsden valley and at Mays Green near Bellehatch. Large modern houses in substantial gardens and more modest suburban homes are overwhelmingly concentrated around Harpsden Wood and the extreme east and south-east of the parish, close to Shiplake and the river. The only surviving medieval buildings are the parish church, Harpsden Court and Hunts Farm, although some other farms and houses perhaps replaced medieval predecessors."

"The parish contains three surviving pre-20th-century gentlemen's residences: Harpsden Court, Bellehatch, and the former rectory (now the Old Rectory). Otherwise the more substantial buildings erected before 1900 are all farmhouses. The earliest surviving is Hunts Farm, the last remaining of three farmsteads shown at Hunts Green in Harpsden Bottom on a map of 1586. The

only extant cruck-framed house in the parish, it was built as a two-bay building probably in the 15th or early 16th century, and was enlarged with a two-bay box-framed eastern extension around the end of the 16th century, when it was held with 78 acres. The brick and flint frontage was presumably built when the house was altered to provide two separate labourers' dwellings in the later 19th century.”

“By the 16th century farmland was held in inclosed fields divided into separate farms, most but not all of which included coppiced woodland as well. In 1586 Harpsden manor comprised c. 520 a. of demesne and woods, and a further 498 a. let to tenants...Tenants' lands were generally arranged in compact blocks, and despite subsequent alterations in size and boundaries are recognizable as the cores of later farms: Wynch's as Bottom House farm, Pearman's as Upper House (then called Searles), Richard Symons' as Lucys, Wydmere and Payse's as Hunts, and Nutkyn's as the southern part of Harpsden Green farm.”

“In 1842 most farmland was held from the Harpsden Court estate by a small group of farmers, of whom many held more than one farm. William Workman leased a very large holding comprising Upper Bolney farm (301 a.) and Sheephouse farm (122 a.), while Charles Sarney held Harpsden farm (109 a.) and Lucys (98 a.), Thomas Frewin Upper House (96 a.) and Bottom House (106 a.), and William Andrews Harpsden Green (52 a.) and Hunts (99 a.).”

“The late 19th and early 20th centuries saw a major shift towards dairy farming. In 1869 108 cows were kept in the parish (58 of them producing milk), but by 1896 there were 336 including 205 in milk. The change was at first even more pronounced than in most neighbouring parishes, and led to considerable investment in dairies, and alteration of barns and outbuildings to include troughs, cow-stalls and drainage passages.”

“By the early 1940s the quality of farming in Harpsden was mixed. Bellehatch park (87 a.) had a good dairy herd and was run by a capable foreman, but many other farms had for some time suffered from lack of capital or poor management by inexperienced, elderly or part-time farmers. Several farms (including Bellehatch and Lower Bolney) ceased to function in the later 20th century, and by 1988 eight of the fourteen remaining holdings were run by part-time farmers, many apparently small producers. In 2007 Lucys farm, run by a couple nearing retirement, was the only (small) dairy farm in the parish, while a beef unit run in sheds at Perseverance Farm was struggling to make ends meet.”

## 2 AIMS OF THE INVESTIGATION

The aims of the investigation as laid out in the Written Scheme of Investigation were as follows:

- To make a record of any significant archaeological remains revealed during the course of any operations that may disturb or destroy archaeological remains.

In particular:

- To record any evidence relating to the late medieval and post-medieval use of the farm and any remains of any earlier structure(s) and use on the site.

### **3 STRATEGY**

#### **3.1 Research Design**

John Moore Heritage Services carried out the work to a Written Scheme of Investigation agreed with the archaeological advisors to the South Oxfordshire District Council.

An archaeologist was present on site during the course of all invasive ground works that had the potential to reveal or disturb archaeological remains. This included for removal of existing foundations, excavation of any ground reduction for new floors, excavations for new foundations and services, and any other significant below ground impacts including surface stripping.

Any archaeological deposits and features revealed were cleaned by hand and recorded in plan before being excavated and recorded at an appropriate level. Any archaeological features or other remains i.e. concentrations of artefacts, were recorded by written, drawn and photographic record. Where archaeological features were exposed during any ground reduction but otherwise would remain unaffected they were recorded only by plan and written description with any surface finds collected. Where remains were to be impacted on, they were sample excavated.

An experienced archaeological Project Officer or Supervisor was present to undertake the site monitoring and recording under the overall direction of J Moore MCIFA.

All other general methodologies for the work and recording were in accordance with the approved WSI (JMHS 2020) and in accordance with the standards specified by the Chartered Institute for Archaeologists (2014).

#### **3.2 Methodology**

Where archaeological horizons were encountered they were cleaned by hand and excavated appropriately. Standard John Moore Heritage Services techniques were employed throughout, involving the completion of a written record for each deposit encountered, with scale plans and section drawings compiled where appropriate. A photographic record was also produced.

The resultant spoil from the works was visually scanned, especially for finds relating to any evidence relating to the late medieval and post-medieval use of the farm and any remains of any earlier structure(s) and use on the site.

### **4 RESULTS (Fig 2 – 3)**

All deposits and features were assigned individual context numbers. Context numbers without brackets indicate features i.e. pit cuts, numbers in ( ) show feature fills or deposits of material, while numbers in bold indicate structural features.



The development area was monitored in phases and was broken into five areas: Area 1, the Cottage and surrounding foundation trenches; Area 2, the parking pad to the north of site; Area 3, the Dairy; Area 4 the Barn; and Area 5 Courtyard.

#### 4.1 Archaeologically Positive Areas

##### *Area 1: The Cottage (Figures 2 & 3, S.11 and S.21)*

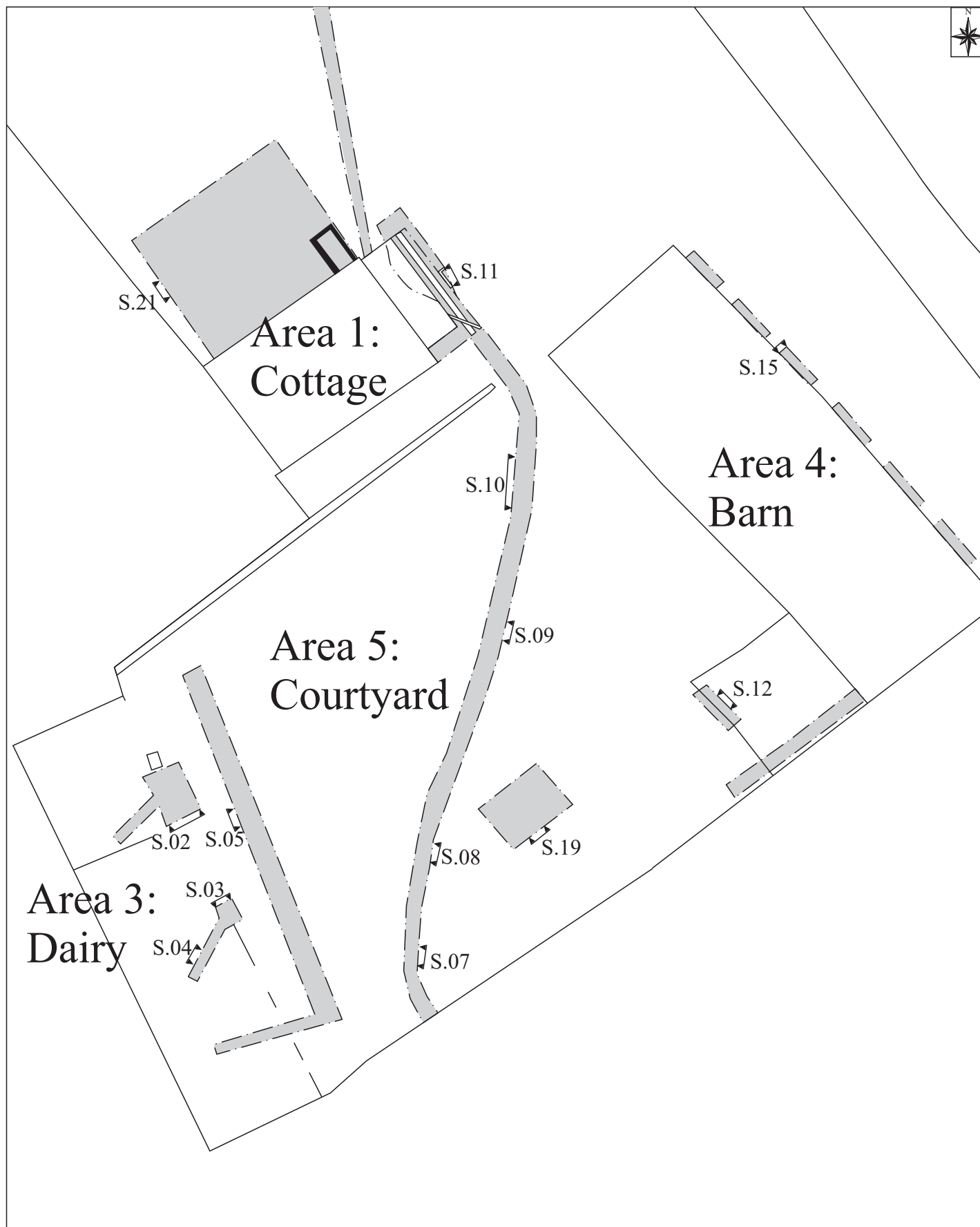
The stratigraphic composition was made of three deposits across the whole of the rear of the cottage. The earliest deposit encountered was the natural geology, (30), which was a compact, mid-yellow brown coarse gravel within a sandy silt matrix. This was the limit of excavation so the thickness was only observed to be over 0.02m. Above this was the subsoil, (29), a friable mid-grey sandy silt with an occasional flint inclusion of up to 0.05m. It was observed across the entire rear of the cottage and was 0.3m thick at its maximum. Above this was the topsoil and turf, (28), which was a 0.2m thick, dark brownish grey, sandy silt (see S.21).

The only archaeological feature uncovered was a concrete footer, **32**, which was seen set against the northern face of the cottage. It was set within a cut, 31, and filled by (33) a loose mid-grey, sandy silt with frequent gravel and concrete fragments throughout. It was 1.2m x 1.7m and was not excavated beyond what was seen in plan and therefore the depth was unknown (see Figure 2).

To the eastern elevation of the cottage in Area 1, a deposit of loose mid-reddish brown silty sand with very high amounts of gravel (17) was identified in the sides an old service trench which had been re-excavated (see S.11).



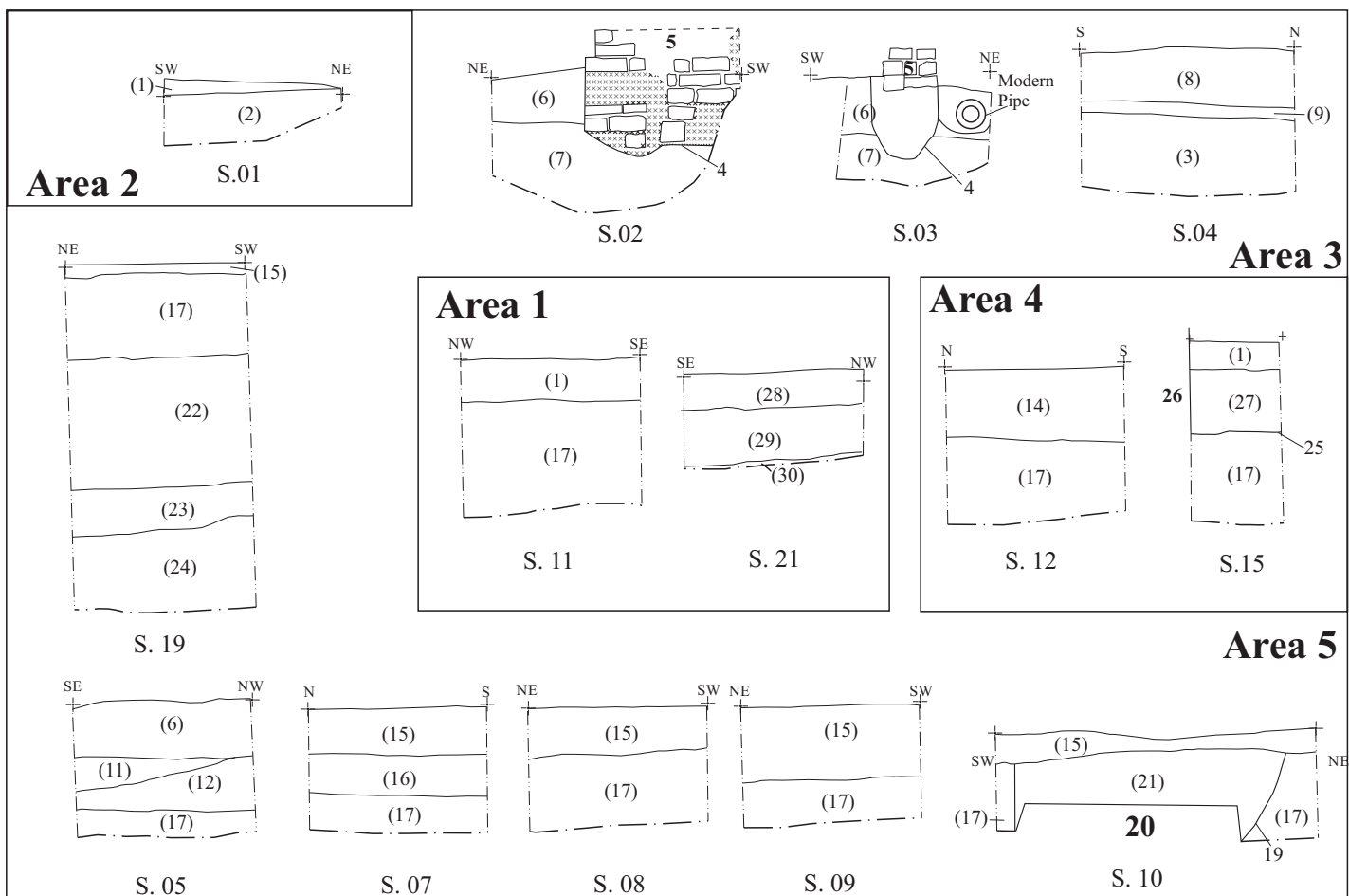
Plate 1: Area 1, foundation footer **32**.



Key Watching Brief trenches Archaeological features

0 10 m

Figure 2: Area 1 and Areas 3-5



**Key** ■ Watching Brief trenches    ▨ Archaeological features    ※ Mortar

0 ————— 2 m  
 Sections

0 ————— 10 m  
 Plan

Figure 3: Area 2 and Sections



This deposit was also seen across Area 5 and was identified as colluvium or redeposited material, although it was difficult to tell where naturally occurring colluvium was present and where the material was redeposited as made ground.

#### 4.2 Archaeologically Negative Areas

##### *Area 2: Parking Pad (Figure 3, S.01)*

This area was 9m x 5m, and stripped to a total depth of 0.36m at its lowest point. It revealed a subsoil (02) covered by a heavily organic topsoil (01). The subsoil (02) was more than 0.25m thick and was composed of a friable mid-brownish grey sandy silt with frequent rooting (due to the hedgerow which had previously been removed ahead of work) and occasional modern gravel throughout. The topsoil (01) was 0.1m thick and was composed of a friable dark blueish grey coarse sandy silty loam, with frequent rooting and occasional modern gravel throughout. Both deposits covered the entire area.

##### *Area 3: The Dairy (Figure 3, S.02-S.04)*

Three trenches were excavated for the installation of services within the footprint of Area 3, the Dairy. The lowest deposit encountered was natural geology, (03), which in this area was a compact, mid orangey brown gravel, with a sandy clay matrix, extending more than 0.4m beyond the lower limit of excavation. This was only encountered in one of the three trenches to the southwest inside the Dairy (see S.04). Above this was a surface deposit, (09), which was a firm, light blackish grey chalk with flint and charcoal inclusions throughout. It was seen to be only 0.1m in thickness. Above this was a more substantial current surface of made ground (08) which was a compact, light greyish-white chalk and flint, and was the same as deposit (06) to the north. This surface was seen across the full extent of the dairy, 21m x 5.8m.



Plate 2: Area 3, S.02.



Plate 3: Area 3, S.04.

The two service trenches to the north of the Dairy revealed the foundation footers associated with the building, **05**. The cut to these foundations had cut the lowest deposit encountered in both trenches, (07), a firm, mid-brownish grey silty clay with flint, and in the upper half of the deposit rubble. This was interpreted as a disturbed sub-soil deposit. It was 0.5m thick at the extent of excavation and extended across the area observed by the two trenches, at least a 10m x 10m area. Above this was a made ground deposit of light greyish-white chalk and flint (06), which is the same as deposit (08) to the south.

*Area 4: The Barn (Figure 3, S.12 and S.15)*

The interior of the barn was seen to be comprised of very similar made ground as that seen in the Dairy. The lowest deposit here was (17), a colluvial deposit seen elsewhere on site and very similar to (07) in the Dairy. It extended beyond 0.6m at the maximum limit of excavation. Above this was similar deposits as seen in the Dairy, the Barn surface deposit, (14), was a compact, light greyish-white chalk and flint, seen to a depth of 0.4m, and similar to deposit (06).

On the eastern elevation of the Barn, six foundation pits were excavated to help shore up the structure. These all showed nearly identical stratigraphic information for this exterior area. The lowest deposit encountered was (17) which was loose mid-reddish brown silty sand with very high amounts of gravels and was observed to an extent of 0.6m in thickness. Into this was cut the builders cut, 25, for the foundation, **26**. This wall cut was backfilled with (27), a loose, dark brownish grey clayey silt with rooting and small natural flint rubble, which was 0.42m in thickness and at least 0.23m wide. This was seen down the entire length of the barn's exterior. Above this was the same topsoil as seen in Area 2, (01). The topsoil (01) was 0.1m thick and was composed of a friable dark blueish grey coarse sandy silty loam, with frequent rooting and occasional modern gravel throughout.





Plate 4: Area 4, S.15.

*Area 5: Courtyard (Figure 3, S.05, S.07-10, and S.19)*

The courtyard contained evidence of previous disturbance across the entire area. A service trench running parallel to the Dairy (S.05) showed three, possibly four, layers of made ground. The lowest deposit was (17) which was loose mid-reddish brown silty sand with very high amounts of gravels and was observed to extend 0.5m in thickness. This deposit had been identified as a colluvium deposit elsewhere and had been cut by the construction cut for the barn. In this area of the site it was difficult to identify where the deposits were naturally occurring and where they had been redeposited as made ground. Above (17) was (12) a compact light yellowish brown, sandy clay, 0.3m thick, and above this was (11), a loose light brownish grey silty clay with 70% hardcore, seen to a depth of 0.2m. The surface deposit was the same deposit identified in the Dairy, (06), a compact, light greyish-white chalk and flint, seen to a depth of 0.4m.

A second service trench was excavated on roughly a north to south alignment transecting the courtyard. The lowest deposit encountered was (17) which was seen elsewhere across the site, and was a loose mid-reddish brown silty sand with very high amounts of gravel, extending to a maximum depth of 0.6m (S.08). Above this was a made ground deposit (16) which was a friable, dark brown silty clay, which extended 0.2m in thickness. Over this was a surface deposit (15) which was compact, light brownish grey, and made of a mixture of concrete, brick and gravel. This extended to a depth of 0.3m below the current ground level.

Near the northern end of this service trench, a modern concrete foundation pad was encountered, **20**. It was set within a cut, **19** and was filled with **(21)** a dark brown grey clayey silt. It is possible that this was associated with the construction of the large subterranean water tank known to be to the west of the concrete footer.

A 3m x 3m x 2m soakaway was also excavated within the courtyard. The lowest deposits encountered were various layers of natural geology. There was the natural chalk **(24)** encountered at 1.4m below the ground level. This was greater than 0.6m in thickness. It was overlain by two natural Head deposits, **(23)** and **(22)** which had a combined thickness of 0.86m. They were very similar in composition of very small gravels in a silty sand matrix, but where **(23)** was a light whitish yellow, 0.26m in thickness, **(22)** appeared to be a light brownish yellow, 0.6m thick. Above this was the deposit **(17)** which had been identified across the site and which was 0.41m thick. Over this was the surface deposit **(15)** which was compact, light brownish grey and made of a mixture of concrete, brick and gravel. This extended to a depth of 0.15m.



Plate 5: Area 5, Soakaway S.19

## 5 DISCUSSION

Across three of the 5 areas monitored on this site there was evidence of substantial disturbance. The main area of this disturbance was focused on Area 5, the Courtyard. The previous use of the land in agricultural work was clear and evidence of a tremendous amount of disturbance for the installation of the water tank was apparent across this area. The total lack of archaeological material across this site may also be attributed to this in large part.

Little further insight to the earlier use of the area prior to the mid-20<sup>th</sup> century seems largely lost due to this intensive development within the courtyard, but better preservation seemed likely across the rear of the cottage and to the east of the Barn. The limited excavation trenches were unable to establish much information beyond

this, however future development to the east or the north of these structures might yield better results than within the disturbed courtyard deposits.

## **6 ARCHIVE**

A Digital Archive is maintained by John Moore Heritage Services (ID 4048) and will be made available upon request (to [admin@jmheritageservices.co.uk](mailto:admin@jmheritageservices.co.uk)). Digitised copies of all the primary records will be made publicly available as appendix to the Final Report submitted to OASIS (ID johnmoor1-415713).

## **7 BIBLIOGRAPHY**

Chartered Institute for Archaeologists, 2014 *Standard and Guidance for Archaeological Watching Briefs*



Site Name: HUNTS FARM Site Code: HNHF19

Context No.	Type	Relationships	Dug	Drawn		Levels	Matrix	Comments
				Section	Plan			
1	LAYER	ABOVE (2)		13-18	01, 11			TOPSOIL
2	LAYER	BELOW (1)		01				SUBSOIL
3	LAYER	BELOW (9)		04,				NATURAL
4	CUT	CUTS (6) & (7)		02, 03				C/O (5)
5	MASONRY	WITHIN (4)		02, 03	1			DAIRY WALL
6	DEPOSIT	FILL (4) CUT BY BUTTS (4)		02, 03, 05				COURTYARD FLOOR MADE GROUND
7	DEPOSIT	CUT BY (4)		02, 03				MADE GROUND
8	↓	ABOVE (9)		04,				DAIRY FLOOR
9	↓	ABOVE (8) BELOW (8)		04,				MADE GROUND
10	*VOID*	SA		(6)				
11	DEPOSIT	BELOW (6) ABOVE (12)		05				MADE GROUND
12	"	BELOW (11) ABOVE (17)		05				"
13	*VOID*	SA		(17)				
14	DEPOSIT	ABOVE 17		06, 12				BARN FLOOR
15	DEPOSIT	ABOVE (10) (17), (18) (21)		07, 08, 09, 10				COURTYARD FLOOR
16	DEPOSIT	BELOW (15)		07				MADE GROUND IN COURTYARD
17	DEPOSIT	BELOW (1) (2), (14) (15) (16) (18)		05-12, 19, 13-18				MADE GROUND <del>COLLUVIUM</del>
18	DEPOSIT	BELOW (15), ABOVE (17), CUT BY (19)		10				RE-DEP NAT
19	CUT	CUTS (18)		10				CUT FOR (20)
20	MASONRY	WITHIN (19) BELOW (21)		10	1			CONCRETE SLAB
21	FILL	FILLS (19)		10				FILL OF (19)
22	DEPOSIT	BELOW (17) ABOVE (23)		19				MADE GROUND <del>COLLUVIUM</del>
23	DEPOSIT	BELOW (20) ABOVE 24		19				COLLUVIUM
24	NATURAL	BELOW (23)		19				NATURAL
25	CUT	CUTS (17)		13-18				FOUNDATION CUT FOR (26)
26	MASONRY	WITHIN (25)		13-18	1			BARN WALL
27	FILL	FILLS (25) DUTTS (26)		13-18				BACKFILL (25)
28	LAYER	ABOVE (29)						TOPSOIL
29	LAYER	ABOVE (30)						SUBSOIL
30	LAYER	BELOW (29)						NATURAL
31	CUT	CUTS (30)						CONSTR. CUT











Grid Squares	Area/Trench <b>AZ</b>	Context Type <b>LAYER</b>	Site Code <b>MJMF 19</b>	Context <b>R</b>
--------------	--------------------------	------------------------------	-----------------------------	---------------------

Add. Sheets	Plan Nos. <b>L</b>	Section Nos. <b>1</b>	Matrix Location
-------------	-----------------------	--------------------------	-----------------

Photographs Slide ~~122857776~~, ~~122922777~~ B&W  
~~1229118377~~ 114816361, 114822154,  
114843635

**DEPOSIT**

1 Compaction	2 Colour
3 Composition	4 Inclusions
5 Thickness	6 Extent
7 Comments	
8 Method and Conditions	

Description **1. FERRASSI 2. MID BROWN ESKY GREY 3. SANDY SRT 4. MOD GRAVEL 5. O.Z. 6. SPANS OVER ENTIRE AREA 7. HEAVY ROOT DISTURBANCE 8. MAXIMUM DRY + CLOUDY**

**CUT**

1 Shape in plan	2 Corners
3 Dimensions/Depth	
4 Break of slope-top	5 Sides
6 Break of slope-base	7 Base
8 Orientation	
9 Inclination of axis	
10 Truncation	11 Fill Nos.
12 Sketch profile	
13 Other comments	

Stratigraphic matrix

<input type="checkbox"/>	<input type="checkbox"/>	<input checked="" type="checkbox"/>	<input type="checkbox"/>	<input type="checkbox"/>
This context is		<input checked="" type="checkbox"/>		
<input type="checkbox"/>	<input type="checkbox"/>	<input type="checkbox"/>	<input type="checkbox"/>	<input type="checkbox"/>

Initials & Date  
**RLX 10/7/19**

Checked by & Date

Interpretation: Internal External Structural Other (specify) **NAR**

Discussion **SUB-SOIL**

Context same as:	Finds
Levels on plan <input type="checkbox"/> sheet	none pot bone glass metal CBM wood leather burntmat.
Highest Lowest	<input type="checkbox"/> <input type="checkbox"/> <input type="checkbox"/> <input type="checkbox"/> <input type="checkbox"/> <input type="checkbox"/> <input type="checkbox"/> <input type="checkbox"/> <input type="checkbox"/>
	Other finds (specify)

Environmental Samples Nos. Finds sample (BM) Nos.

Small finds Nos.  
Finds sieving: on-site  off-site  metal detecting: in situ  on-site  off-site

Checked Interpretation

Provisional Period Group Initials & Date



Grid Squares	Area/Trench	Context Type <i>LAYER DEPOSIT</i>	Site Code <i>HNHF19</i>	Context <i>3</i>
--------------	-------------	--	----------------------------	---------------------

Add. Sheets	Plan Nos. <i>/</i>	Section Nos. <i>04</i>	Matrix Location
-------------	-----------------------	---------------------------	-----------------

Photographs Slide *134154317, 134200679, B&W*

**DEPOSIT**

1 Compaction	2 Colour
3 Composition	4 Inclusions
5 Thickness	6 Extent
7 Comments	
8 Method and Conditions	

Description *1 COMPACT*  
*2 MID ORANGE BROWN*  
*3 SANDY CLAY*  
*4 GRAVEL*  
*5 0-4m TO LDE*  
*6 UNCERTAIN*

**CUT**

1 Shape in plan	2 Corners
3 Dimensions/Depth	
4 Break of slope-top	5 Sides
6 Break of slope-base	7 Base
8 Orientation	
9 Inclination of axis	
10 Truncation	11 Fill Nos.
12 Sketch profile	
13 Other comments	

Stratigraphic matrix

<input type="checkbox"/>	<input type="checkbox"/>	<input checked="" type="checkbox"/> (9)	<input type="checkbox"/>	<input type="checkbox"/>
This context is		<input checked="" type="checkbox"/> (3)	<input type="checkbox"/>	<input type="checkbox"/>
<input type="checkbox"/>	<input type="checkbox"/>	<input type="checkbox"/>	<input type="checkbox"/>	<input type="checkbox"/>

Initials & Date  
*SK 12/9/19*

Checked by & Date

Interpretation: Internal  **External**  Structural  Other (specify)

Discussion  
*NATURAL*

Context same as:	Finds
Levels on plan <input type="checkbox"/> sheet	none <input checked="" type="checkbox"/> pot <input type="checkbox"/> bone <input type="checkbox"/> glass <input type="checkbox"/> metal <input type="checkbox"/> CBM <input type="checkbox"/> wood <input type="checkbox"/> leather <input type="checkbox"/> burntmat. <input type="checkbox"/>
Highest <input type="checkbox"/> Lowest <input type="checkbox"/>	Other finds (specify)
Environmental Samples Nos.	Finds sample (BM) Nos.

Small finds Nos. Finds sieving: on-site  off-site  metal detecting: in situ  on-site  off-site

Checked Interpretation

Provisional Period	Group	Initials & Date
--------------------	-------	-----------------



Grid Squares	Area/Trench	Context Type <b>CUT</b>	Site Code <b>H1NHFI9</b>	Context <b>4</b>
--------------	-------------	----------------------------	-----------------------------	---------------------

Add. Sheets	Plan Nos. <b>1</b>	Section Nos. <b>02, 03</b>	Matrix Location
-------------	-----------------------	-------------------------------	-----------------

Photographs Slide 122859976, 122932179, B&W  
 122948371, 1225457294, 125519808,  
 130144848, 130232395

**DEPOSIT**

1 Compaction	2 Colour
3 Composition	4 Inclusions
5 Thickness	6 Extent
7 Comments	
8 Method and Conditions	

Description **1 LINEAR**  
**2 SQUARE**  
**3 0.5m D. 0.7m W. TO LOE c. 2.1, 2m LONG**  
**4 SHARP**  
**5 VERTICAL**  
**6 GRADUAL**  
**7 ROUNDED**  
**8 NW-SE**  
**9 VERTICAL**

**CUT**

1 Shape in plan	2 Corners
3 Dimensions/Depth	
4 Break of slope-top	5 Sides
6 Break of slope-base	7 Base
8 Orientation	
9 Inclination of axis	
10 Truncation	11 Fill Nos.
12 Sketch profile	
13 Other comments	

Stratigraphic matrix

<input type="checkbox"/>	<input type="checkbox"/>	<input checked="" type="checkbox"/>	<input type="checkbox"/>	<input type="checkbox"/>
This context is		<input checked="" type="checkbox"/>		
<input type="checkbox"/>	<input type="checkbox"/>	<input checked="" type="checkbox"/>	<input type="checkbox"/>	<input type="checkbox"/>

Initials & Date  
**SK 12/9/19**

Checked by & Date

Interpretation: Internal    External    **Structural**    Other (specify)

Discussion  
**FOUNDATION CUT OF DAIRY WALL**

Context same as:	Finds
Levels on plan <input type="checkbox"/> sheet	none <input checked="" type="checkbox"/> pot <input type="checkbox"/> bone <input type="checkbox"/> glass <input type="checkbox"/> metal <input type="checkbox"/> CBM <input type="checkbox"/> wood <input type="checkbox"/> leather <input type="checkbox"/> burntmat. <input type="checkbox"/>
Highest <input type="checkbox"/> Lowest <input type="checkbox"/>	Other finds (specify)

Environmental Samples Nos.      Finds sample (BM) Nos.

Small finds Nos.  
 Finds sieving: on-site  off-site  metal detecting: in situ  on-site  off-site

Checked Interpretation

Provisional Period	Group	Initials & Date
--------------------	-------	-----------------



Grid Squares	Area/Trench A 3	MASONRY WALL + FOUNDATIONS	Site Code MNH F 19	Context S
--------------	--------------------	-------------------------------	-----------------------	--------------

Add. Sheets	Plan Nos. L	Section Nos. 2, 3 8	Matrix Location
-------------	----------------	------------------------	-----------------

Photographs Slide SEE (4)	B&W	<ol style="list-style-type: none"> <li>1 Materials</li> <li>2 Size of materials (brick: BLT in mm)</li> <li>3 Finish of stones</li> <li>4 Coursing/bond</li> <li>5 Form</li> <li>6 Direction of face(s)</li> <li>7 Bonding material</li> <li>8 Dimensions as found</li> <li>9 Other comments</li> </ol>
------------------------------	-----	---

Description 1. RED BRICK 2. 240-- x 300-- x 70--  
3. SQUARED WITH NO FROGS 4. FLEMISH 5. WALL + FOUNDATIONS  
6. NE+SW 7. LGMT WHITISH YELLOW MORTAR WITH MOD CHALK FLEKS.  
8.- 9. FOUNDATION ROUGHLY LAFN WITH MORE LIBERAL MORTAR USAGE. BRICKS MODERATELY WEATHERED - MOSTLY TOWARDS CORNERS. ONLY SIDE WITH REGULAR WINDOWS.

Stratigraphic matrix	Initials & Date RK 10/7/19															
<table border="1"> <tr> <td><input type="checkbox"/></td> <td><input type="checkbox"/></td> <td><input type="checkbox" value="-"/></td> <td><input type="checkbox"/></td> <td><input type="checkbox"/></td> </tr> <tr> <td colspan="2">This context is</td> <td><input type="checkbox" value="5"/></td> <td><input type="checkbox"/></td> <td><input type="checkbox"/></td> </tr> <tr> <td><input type="checkbox"/></td> <td><input type="checkbox"/></td> <td><input type="checkbox" value="8 [4]"/></td> <td><input type="checkbox"/></td> <td><input type="checkbox"/></td> </tr> </table>	<input type="checkbox"/>	<input type="checkbox"/>	<input type="checkbox" value="-"/>	<input type="checkbox"/>	<input type="checkbox"/>	This context is		<input type="checkbox" value="5"/>	<input type="checkbox"/>	<input type="checkbox"/>	<input type="checkbox"/>	<input type="checkbox"/>	<input type="checkbox" value="8 [4]"/>	<input type="checkbox"/>	<input type="checkbox"/>	Checked by & Date
<input type="checkbox"/>	<input type="checkbox"/>	<input type="checkbox" value="-"/>	<input type="checkbox"/>	<input type="checkbox"/>												
This context is		<input type="checkbox" value="5"/>	<input type="checkbox"/>	<input type="checkbox"/>												
<input type="checkbox"/>	<input type="checkbox"/>	<input type="checkbox" value="8 [4]"/>	<input type="checkbox"/>	<input type="checkbox"/>												

Interpretation: Internal External COURTYARD FACING WALL OF DAIRY

---

Associated contexts: \_\_\_\_\_

Context same as: \_\_\_\_\_

Worked stones: \_\_\_\_\_

Levels on plan	sheet	Samples Petrological:	Regular bricks
----------------	-------	-----------------------	----------------

Checked Interpretation \_\_\_\_\_

---



---

Provisional period	Group	Structure No	Initials & Date
--------------------	-------	--------------	-----------------



Grid Squares	Area/Trench	Context Type <b>DEPOSIT</b>	Site Code <b>HNHF19</b>	Context <b>6</b>
--------------	-------------	--------------------------------	----------------------------	---------------------

Add. Sheets	Plan Nos. <b>1</b>	Section Nos. <b>02, 03, 05</b>	Matrix Location
-------------	-----------------------	-----------------------------------	-----------------

Photographs Slide 122859976, 122932179, B&W  
 122948371, 125457294, 125519808,  
 130144648, 130232395, 154158325, 154215143

**DEPOSIT**

1 Compaction	2 Colour
3 Composition	4 Inclusions
5 Thickness	6 Extent
7 Comments	
8 Method and Conditions	

Description **1 FIRM**  
**2 WHITE GREY**  
**3 CRUSHED CHALK**  
**4 CBM**  
**5 0.32m**  
**6 c. 32 X 23m COURTYARD**

**CUT**

1 Shape in plan	2 Corners
3 Dimensions/Depth	
4 Break of slope-top	5 Sides
6 Break of slope-base	7 Base
8 Orientation	
9 Inclination of axis	11 Fill Nos.
10 Truncation	
12 Sketch profile	
13 Other comments	

Stratigraphic matrix

<input type="checkbox"/>	<input type="checkbox"/>	<input checked="" type="checkbox"/>	<input type="checkbox"/>	<input type="checkbox"/>
This context is		<input checked="" type="checkbox"/>	<input type="checkbox"/>	<input type="checkbox"/>
<input type="checkbox"/>	<input type="checkbox"/>	<input checked="" type="checkbox"/>	<input type="checkbox"/>	<input type="checkbox"/>

Initials & Date  
**SK 12/9/19**

Checked by & Date

Interpretation: Internal  **External**  Structural  Other (specify)

Discussion  
**UPPER MADE GROUND DEPOSIT IN COURTYARD**

Context same as: **15** Finds

Levels on plan <input type="checkbox"/> sheet	none <input checked="" type="checkbox"/> pot <input type="checkbox"/> bone <input type="checkbox"/> glass <input type="checkbox"/> metal <input type="checkbox"/> CBM <input type="checkbox"/> wood <input type="checkbox"/> leather <input type="checkbox"/> burntmat. <input type="checkbox"/>
Highest <input type="checkbox"/> Lowest <input type="checkbox"/>	Other finds (specify) <input type="checkbox"/>

Environmental Samples Nos.  Finds sample (BM) Nos.

Small finds Nos. Finds sieving: on-site  off-site  metal detecting: in situ  on-site  off-site

Checked Interpretation

Provisional Period  Group  Initials & Date



Grid Squares	Area/Trench	Context Type <b>DEPOSIT</b>	Site Code <b>HJHF19</b>	Context <b>7</b>
--------------	-------------	--------------------------------	----------------------------	---------------------

Add. Sheets	Plan Nos. <b>1</b>	Section Nos. <b>02, 03</b>	Matrix Location
-------------	-----------------------	-------------------------------	-----------------

Photographs Slide **SEE (04)** B&W

**DEPOSIT**

1 Compaction	2 Colour
3 Composition	4 Inclusions
5 Thickness	6 Extent
7 Comments	
8 Method and Conditions	

Description **1 FIRM**  
**2 M.D BROWN GREY**  
**3 SILT CLAY**  
**4 CBM FLINTS**  
**5 0.5m TO LDE**  
**6 UNCERTAIN - WITHIN 2X3m TP.**

**CUT**

1 Shape in plan	2 Corners
3 Dimensions/Depth	
4 Break of slope-top	5 Sides
6 Break of slope-base	7 Base
8 Orientation	
9 Inclination of axis	
10 Truncation	11 Fill Nos.
12 Sketch profile	
13 Other comments	

Stratigraphic matrix

<input type="checkbox"/>	<input type="checkbox"/>	<input checked="" type="checkbox"/> (6)	<input type="checkbox"/>	<input type="checkbox"/>
This context is		<input checked="" type="checkbox"/> (7)	<input type="checkbox"/>	<input type="checkbox"/>
<input type="checkbox"/>	<input type="checkbox"/>	<input type="checkbox"/>	<input type="checkbox"/>	<input type="checkbox"/>

Initials & Date

---

Checked by & Date

Interpretation: Internal  **External**  Structural  Other (specify)

Discussion **MADE GROUND DEPOSIT IN COURTYARD.**

Context same as:	Finds
Levels on plan <input type="checkbox"/> sheet <input type="checkbox"/>	none <input checked="" type="checkbox"/> pot <input type="checkbox"/> bone <input type="checkbox"/> glass <input type="checkbox"/> metal <input type="checkbox"/> CBM <input type="checkbox"/> wood <input type="checkbox"/> leather <input type="checkbox"/> burntmat. <input type="checkbox"/>
Highest <input type="checkbox"/> Lowest <input type="checkbox"/>	Other finds (specify) <input type="checkbox"/>

Environmental Samples Nos.  Finds sample (BM) Nos.

Small finds Nos. Finds sieving: on-site  off-site  metal detecting: in situ  on-site  off-site

Checked Interpretation

Provisional Period	Group	Initials & Date
--------------------	-------	-----------------



Grid Squares	Area/Trench	Context Type <b>DEPOSIT</b>	Site Code <b>HNHF19</b>	Context <b>8</b>
--------------	-------------	--------------------------------	----------------------------	---------------------

Add. Sheets	Plan Nos. <b>i</b>	Section Nos. <b>04</b>	Matrix Location
-------------	-----------------------	---------------------------	-----------------

Photographs Slide **B&W**  
134154317, 134200679.

**DEPOSIT**

1 Compaction	2 Colour
3 Composition	4 Inclusions
5 Thickness	6 Extent
7 Comments	
8 Method and Conditions	

Description **1 FIRM**

**2 LIGHT GREY WHITE**

**3 CRUSHED CHALK & FLINTS**

**4 FLINTS**

**5 0.32m**

**6 c. 21 x 5.8m (WITHIN DAIRY)**

**7**

**CUT**

1 Shape in plan	2 Corners
3 Dimensions/Depth	
4 Break of slope-top	5 Sides
6 Break of slope-base	7 Base
8 Orientation	
9 Inclination of axis	
10 Truncation	11 Fill Nos.
12 Sketch profile	
13 Other comments	

Stratigraphic matrix

<input type="checkbox"/>	<input type="checkbox"/>	<input type="checkbox"/>	<input type="checkbox"/>	<input type="checkbox"/>
This context is		<b>(8)</b>		
<input type="checkbox"/>	<input type="checkbox"/>	<b>(9)</b>	<input type="checkbox"/>	<input type="checkbox"/>

Initials & Date  
**SK 12/9/19**

Checked by & Date

Interpretation: **Internal** External Structural Other (specify)

Discussion  
**CHALK DAIRY FLOOR**

Context same as:	Finds
Levels on plan <input type="checkbox"/> sheet	none <input checked="" type="checkbox"/> pot <input type="checkbox"/> bone <input type="checkbox"/> glass <input type="checkbox"/> metal <input type="checkbox"/> CBM <input type="checkbox"/> wood <input type="checkbox"/> leather <input type="checkbox"/> burntmat. <input type="checkbox"/>
Highest <input type="checkbox"/> Lowest <input type="checkbox"/>	Other finds (specify)

Environmental Samples Nos.  Finds sample (BM) Nos.

Small finds Nos. Finds sieving: on-site  off-site  metal detecting: in situ  on-site  off-site

Checked Interpretation

Provisional Period  Group  Initials & Date



Grid Squares	Area/Trench	Context Type <b>DEPOSIT</b>	Site Code <b>HNHF19</b>	Context <b>9</b>
--------------	-------------	--------------------------------	----------------------------	---------------------

Add. Sheets	Plan Nos. <b>1</b>	Section Nos. <b>04</b>	Matrix Location
-------------	-----------------------	---------------------------	-----------------

Photographs Slide <b>134154317, 134200679</b>	B&W	<b>DEPOSIT</b>
--	-----	----------------

Description **1 FIRM**

**2 2M LIGHT BLACK GRB1**

**3 CHACK**

**4 FLINT, CHARCOAL**

**5 0.1m**

**6 c. 2m x 5.8m**

1 Compaction	2 Colour
3 Composition	4 Inclusions
5 Thickness	6 Extent
7 Comments	
8 Method and Conditions	

<b>CUT</b>	
1 Shape in plan	2 Corners
3 Dimensions/Depth	
4 Break of slope-top	5 Sides
6 Break of slope-base	7 Base
8 Orientation	
9 Inclination of axis	
10 Truncation	11 Fill Nos.
12 Sketch profile	
13 Other comments	

Stratigraphic matrix

<input type="checkbox"/>	<input type="checkbox"/>	<input checked="" type="checkbox"/> (8)	<input type="checkbox"/>	<input type="checkbox"/>
This context is		<input checked="" type="checkbox"/> (9)	<input type="checkbox"/>	<input type="checkbox"/>
<input type="checkbox"/>	<input type="checkbox"/>	<input checked="" type="checkbox"/> (3)	<input type="checkbox"/>	<input type="checkbox"/>

Initials & Date  
**SK/12/9/19**

Checked by & Date

Interpretation: Internal External Structural Other (specify)

Discussion  
**PREVIOUS DAIRY FLOOR**

Context same as:	Finds
Levels on plan <input type="checkbox"/> sheet	none <input checked="" type="checkbox"/> pot <input type="checkbox"/> bone <input type="checkbox"/> glass <input type="checkbox"/> metal <input type="checkbox"/> CBM <input type="checkbox"/> wood <input type="checkbox"/> leather <input type="checkbox"/> burntmat. <input type="checkbox"/>
Highest <input type="checkbox"/> Lowest <input type="checkbox"/>	Other finds (specify)

Environmental Samples Nos.

Finds sample (BM) Nos.

Small finds Nos. Finds sieving: on-site  off-site  metal detecting: in situ  on-site  off-site

Checked Interpretation

Provisional Period	Group	Initials & Date
--------------------	-------	-----------------



Grid Squares	Area/Trench	Context Type <u>DEPOSIT</u>	Site Code <u>HNHF19</u>	Context <u>11</u>
--------------	-------------	--------------------------------	----------------------------	----------------------

Add. Sheets	Plan Nos.	Section Nos. <u>05</u>	Matrix Location
-------------	-----------	---------------------------	-----------------

Photographs Slide <u>154155325,</u> <u>154215143</u>	B&W	<b>DEPOSIT</b>
---	-----	----------------

Description 1 LOOSE

2 SILT CLAY

3 LIGHT BROWN GREY

4 c. 70% CBM

5 0.2m

6 UNCLEAR

7

1 Compaction	2 Colour
3 Composition	4 Inclusions
5 Thickness	6 Extent
7 Comments	
8 Method and Conditions	

<b>CUT</b>	
1 Shape in plan	2 Corners
3 Dimensions/Depth	
4 Break of slope-top	5 Sides
6 Break of slope-base	7 Base
8 Orientation	
9 Inclination of axis	
10 Truncation	11 Fill Nos.
12 Sketch profile	
13 Other comments	

Stratigraphic matrix

<input type="checkbox"/>	<input type="checkbox"/>	<input checked="" type="checkbox"/> (6)	<input type="checkbox"/>	<input type="checkbox"/>
This context is		<input checked="" type="checkbox"/> (11)	<input type="checkbox"/>	<input type="checkbox"/>
<input type="checkbox"/>	<input type="checkbox"/>	<input checked="" type="checkbox"/> (12)	<input type="checkbox"/>	<input type="checkbox"/>

Initials & Date  
SK 12/9/19

Checked by & Date

Interpretation: Internal  External  Structural  Other (specify)

Discussion  
LEVELLING DEPOSIT OF BRICKS

Context same as:	Finds
Levels on plan <input type="checkbox"/> sheet	none <input checked="" type="checkbox"/> pot <input type="checkbox"/> bone <input type="checkbox"/> glass <input type="checkbox"/> metal <input type="checkbox"/> CBM <input type="checkbox"/> wood <input type="checkbox"/> leather <input type="checkbox"/> burntmat. <input type="checkbox"/>
Highest <input type="checkbox"/> Lowest <input type="checkbox"/>	Other finds (specify)

Environmental Samples Nos.	Finds sample (BM) Nos.
----------------------------	------------------------

Small finds Nos. Finds sieving: on-site  off-site  metal detecting: in situ  on-site  off-site

Checked Interpretation

Provisional Period	Group	Initials & Date
--------------------	-------	-----------------



Grid Squares	Area/Trench	Context Type <b>DEPOSIT</b>	Site Code <b>HNHF19</b>	Context <b>12</b>
--------------	-------------	--------------------------------	----------------------------	----------------------

Add. Sheets	Plan Nos. 	Section Nos. <b>05</b>	Matrix Location
-------------	---------------	---------------------------	-----------------

Photographs Slide <b>154155225, 15421543</b>	B&W	<b>DEPOSIT</b>
--	-----	----------------

Description | **COMPACT**

**2 LIGHT YELLOW BROWN**

**3 SAND CLAY**

**4 ROOTING, FLINTS, CBM**

**5 0-3m**

**6 UNCLEAR**

1 Compaction	2 Colour
3 Composition	4 Inclusions
5 Thickness	6 Extent
7 Comments	
8 Method and Conditions	

<b>CUT</b>	
1 Shape in plan	2 Corners
3 Dimensions/Depth	
4 Break of slope-top	5 Sides
6 Break of slope-base	7 Base
8 Orientation	
9 Inclination of axis	
10 Truncation	11 Fill Nos.
12 Sketch profile	
13 Other comments	

Stratigraphic matrix

<input type="checkbox"/>	<input type="checkbox"/>	<input checked="" type="checkbox"/> (11)	<input type="checkbox"/>	<input type="checkbox"/>
This context is		<input checked="" type="checkbox"/> (12)	<input type="checkbox"/>	<input type="checkbox"/>
<input type="checkbox"/>	<input type="checkbox"/>	<input checked="" type="checkbox"/> (17)	<input type="checkbox"/>	<input type="checkbox"/>

Initials & Date <b>SK 12/9/19</b>
Checked by & Date

Interpretation: Internal  **External**  Structural  Other (specify)

Discussion

**MADE GROUND DEPOSIT WITHIN**

**COURTYARD**

Context same as:	Finds
Levels on plan <input type="checkbox"/> sheet	none <input checked="" type="checkbox"/> pot <input type="checkbox"/> bone <input type="checkbox"/> glass <input type="checkbox"/> metal <input type="checkbox"/> CBM <input type="checkbox"/> wood <input type="checkbox"/> leather <input type="checkbox"/> burntmat. <input type="checkbox"/>
Highest <input type="checkbox"/> Lowest <input type="checkbox"/>	Other finds (specify)

Environmental Samples Nos.	Finds sample (BM) Nos.
----------------------------	------------------------

Small finds Nos.	Finds sieving: on-site <input type="checkbox"/> off-site <input type="checkbox"/> metal detecting: in situ <input type="checkbox"/> on-site <input type="checkbox"/> off-site <input checked="" type="checkbox"/>
------------------	---

Checked Interpretation

Provisional Period	Group	Initials & Date
--------------------	-------	-----------------



Grid Squares	Area/Trench	Context Type DEPOSIT	Site Code KINHFI9	Context 14
--------------	-------------	-------------------------	----------------------	---------------

Add. Sheets	Plan Nos.	Section Nos. 06, 12	Matrix Location
-------------	-----------	------------------------	-----------------

Photographs Slide 6476-6479, 6490 B&W F1 # 2&3, F1 #10

**DEPOSIT**

1 Compaction	2 Colour
3 Composition	4 Inclusions
5 Thickness	6 Extent
7 Comments	
8 Method and Conditions	

Description 1 COMPACT  
 2 LIGHT GREY WHITE  
 3 CRUSHED CHALK  
 4 FLINT  
 5 0-28M  
 6 WITHIN BARN ANNEX c. 6m<sup>2</sup>

**CUT**

1 Shape in plan	2 Corners
3 Dimensions/Depth	
4 Break of slope-top	5 Sides
6 Break of slope-base	7 Base
8 Orientation	
9 Inclination of axis	
10 Truncation	11 Fill Nos.
12 Sketch profile	
13 Other comments	

Stratigraphic matrix

<input type="checkbox"/>	<input type="checkbox"/>	<input type="checkbox"/>	<input type="checkbox"/>	<input type="checkbox"/>
This context is		(14)		
<input type="checkbox"/>	<input type="checkbox"/>	(17)	<input type="checkbox"/>	<input type="checkbox"/>

Initials & Date  
SK 12/9/19

Checked by & Date

Interpretation: Internal External Structural Other (specify)

Discussion  
 BARN FLOOR

Context same as:	Finds
Levels on plan <input type="checkbox"/> sheet	none pot bone glass metal CBM wood leather burntmat.
Highest <input type="checkbox"/> Lowest <input type="checkbox"/>	<input checked="" type="checkbox"/> <input type="checkbox"/> <input type="checkbox"/> <input type="checkbox"/> <input type="checkbox"/> <input type="checkbox"/> <input type="checkbox"/> <input type="checkbox"/> <input type="checkbox"/>
	Other finds (specify)

Environmental Samples Nos.  Finds sample (BM) Nos.

Small finds Nos. Finds sieving: on-site  off-site  metal detecting: in situ  on-site  off-site

Checked Interpretation

Provisional Period	Group	Initials & Date
--------------------	-------	-----------------



Grid Squares	Area/Trench	Context Type <b>DEPOSIT</b>	Site Code <b>HNHF19</b>	Context <b>15</b>
--------------	-------------	--------------------------------	----------------------------	----------------------

Add. Sheets	Plan Nos.	Section Nos. <b>07, 08, 09, 10</b>	Matrix Location
-------------	-----------	---------------------------------------	-----------------

Photographs Slide <b>6480-6486</b> B&W <b>F1#4, - F1#8</b>	<b>DEPOSIT</b> 1 Compaction                      2 Colour 3 Composition                    4 Inclusions 5 Thickness                        6 Extent 7 Comments 8 Method and Conditions
--	---

Description **1 v. COMPACT.**

**2 LIGHT BROWN GREY**

**3 CONCRETE/BRICK/GRAVEL**

**4 CBM, FLINTS**

**5 0.25-0.3m**

**6 WITHIN COURTYARD.**

**CUT**

1 Shape in plan                      2 Corners

3 Dimensions/Depth

4 Break of slope-top                5 Sides

6 Break of slope-base               7 Base

8 Orientation

9 Inclination of axis

10 Truncation                        11 Fill Nos.

12 Sketch profile

13 Other comments

Stratigraphic matrix

<input type="checkbox"/>	<input type="checkbox"/>	<input type="checkbox"/>	<input type="checkbox"/>	<input type="checkbox"/>
This context is		<b>(15)</b>	<input type="checkbox"/>	<input type="checkbox"/>
<input type="checkbox"/>	<input type="checkbox"/>	<b>(17)</b>	<input type="checkbox"/>	<input type="checkbox"/>

Initials & Date

---

Checked by & Date

Interpretation: Internal      **External**      Structural      Other (specify)

Discussion

**COURTYARD FLOOR**

Context same as: <b>6</b>	Finds
Levels on plan <input type="checkbox"/> sheet	none   pot   bone   glass   metal   CBM   wood   leather   burntmat.
Highest <input type="checkbox"/> Lowest <input type="checkbox"/>	<input checked="" type="checkbox"/> <input type="checkbox"/> <input type="checkbox"/> <input type="checkbox"/> <input type="checkbox"/> <input type="checkbox"/> <input type="checkbox"/> <input type="checkbox"/> <input type="checkbox"/> <input type="checkbox"/>
Environmental Samples Nos.	Other finds (specify)

Finds sample (BM) Nos.

Small finds Nos.

Finds sieving: on-site  off-site  metal detecting: in situ  on-site  off-site

Checked Interpretation

Provisional Period	Group	Initials & Date
--------------------	-------	-----------------



Grid Squares	Area/Trench	Context Type <u>DEPOSIT</u>	Site Code <u>HNHF19</u>	Context <u>16</u>
--------------	-------------	--------------------------------	----------------------------	----------------------

Add. Sheets	Plan Nos.	Section Nos. <u>07</u>	Matrix Location
-------------	-----------	---------------------------	-----------------

Photographs Slide <u>6480</u>	B&W <u>F1#4</u>	<b>DEPOSIT</b> 1 Compaction 3 Composition 5 Thickness 7 Comments 8 Method and Conditions	2 Colour 4 Inclusions 6 Extent
----------------------------------	--------------------	---	--------------------------------------

Description 1 FRIABLE  
2 DARK BROWN GREY  
3 SILT CLAY  
4 ROOTING & FLINTS  
5 0-2M  
6 UNCERTAIN

**CUT**  
1 Shape in plan  
3 Dimensions/Depth  
4 Break of slope-top  
6 Break of slope-base  
8 Orientation  
9 Inclination of axis  
10 Truncation  
12 Sketch profile  
13 Other comments

2 Corners  
5 Sides  
7 Base  
11 Fill Nos.

Stratigraphic matrix

<input type="checkbox"/>	<input type="checkbox"/>	<u>(15)</u>	<input type="checkbox"/>	<input type="checkbox"/>
This context is		<u>(16)</u>	<input type="checkbox"/>	<input type="checkbox"/>
<input type="checkbox"/>	<input type="checkbox"/>	<u>(17)</u>	<input type="checkbox"/>	<input type="checkbox"/>

Initials & Date  
SK 13/9/19

Checked by & Date

Interpretation: Internal    External    Structural    Other (specify)

Discussion  
MADE GROUND DEPOSIT IN COURTYARD

Context same as:	Finds
Levels on plan <input type="checkbox"/> sheet	none <input checked="" type="checkbox"/> pot <input type="checkbox"/> bone <input type="checkbox"/> glass <input type="checkbox"/> metal <input type="checkbox"/> CBM <input type="checkbox"/> wood <input type="checkbox"/> leather <input type="checkbox"/> burntmat. <input type="checkbox"/>
Highest <input type="checkbox"/> Lowest <input type="checkbox"/>	Other finds (specify)

Environmental Samples Nos.	Finds sample (BM) Nos.
----------------------------	------------------------

Small finds Nos.  
Finds sieving: on-site  off-site  metal detecting: in situ  on-site  off-site

Checked Interpretation

Provisional Period	Group	Initials & Date
--------------------	-------	-----------------



Grid Squares	Area/Trench	Context Type <b>DEPOSIT</b>	Site Code <b>HNHF17</b>	Context <b>17</b>
--------------	-------------	--------------------------------	----------------------------	----------------------

Add. Sheets	Plan Nos.	Section Nos. <b>05, 06, 07, 08, 09, 10, 11, 12, 19, 13-16</b>	Matrix Location
-------------	-----------	---	-----------------

Photographs Slide **154155325, 154215143, 6476-6487, 6496, 144707083, GEDC 1969 - GEDC 1988** B&W F1#2 - F1#10

**DEPOSIT**

1 Compaction	2 Colour
3 Composition	4 Inclusions
5 Thickness	6 Extent
7 Comments	
8 Method and Conditions	

**Description | LOOSE**

**2 MID RED BROWN**

**3 SILT SAND**

**4 c. 70% GRAVELS**

**5 c. 0-5m**

**6 APPEARS ACROSS SITE**

**CUT**

1 Shape in plan	2 Corners
3 Dimensions/Depth	
4 Break of slope/top	5 Sides
6 Break of slope-base	7 Base
8 Orientation	
9 Inclination of axis	
10 Truncation	11 Fill Nos.
12 Sketch profile	
13 Other comments	

**Stratigraphic matrix**

(1)	(12)	(14)	(16)	(18)
This context is		(17)		
		(22)		

**Initials & Date**

**SK 13/9/19**

**Checked by & Date**

Interpretation: Internal  **External**  Structural  Other (specify)

**Discussion**

~~COLLUVIAL MATERIAL~~

**MADE GROUND**

Context same as:	Finds
Levels on plan <input type="checkbox"/> sheet	none <input checked="" type="checkbox"/> pot <input type="checkbox"/> bone <input type="checkbox"/> glass <input type="checkbox"/> metal <input type="checkbox"/> CBM <input type="checkbox"/> wood <input type="checkbox"/> leather <input type="checkbox"/> burntmat. <input type="checkbox"/>
Highest <input type="checkbox"/> Lowest <input type="checkbox"/>	Other finds (specify)

Environmental Samples Nos.  Finds sample (BM) Nos.

Small finds Nos. Finds sieving: on-site  off-site  metal detecting: in situ  on-site  off-site

Checked Interpretation

Provisional Period	Group	Initials & Date
--------------------	-------	-----------------











Grid Squares	Area/Trench	MASONRY SLAB	Site Code HNHF19	Context 20
--------------	-------------	-----------------	---------------------	---------------

Add. Sheets	Plan Nos. /	Section Nos. 10	Matrix Location
-------------	----------------	--------------------	-----------------

Photographs Slide 6484 - 6486	B&W F1 # 8	<ol style="list-style-type: none"> <li>1 Materials</li> <li>2 Size of materials (brick: BLT in mm)</li> <li>3 Finish of stones</li> <li>4 Coursing/bond</li> <li>5 Form</li> <li>6 Direction of face(s)</li> <li>7 Bonding material</li> <li>8 Dimensions as found</li> <li>9 Other comments</li> </ol>
-------------------------------	------------	---

Description 1 CONCRETE

2 1-2 x 0.5 x 0.2 m (SEEN WITHIN TR.)

3 ~~CONCRETE~~ SLAB

4 /

5 CONCRETE SLAB

Stratigraphic matrix	Initials & Date															
<table border="1"> <tr> <td></td> <td></td> <td>(21)</td> <td></td> <td></td> </tr> <tr> <td>This context is</td> <td></td> <td>(20)</td> <td></td> <td></td> </tr> <tr> <td></td> <td></td> <td>(19)</td> <td></td> <td></td> </tr> </table>			(21)			This context is		(20)					(19)			SK/13/9/19
		(21)														
This context is		(20)														
		(19)														
	Checked by & Date															

Interpretation: Internal External

CONCRETE SLAB IN COURTYARD.

UNKNOWN FUNCTION

Associated contexts: (19) (21)

Context same as:

Worked stones:

Levels on plan	sheet	Samples Petrological:	Regular bricks
Highest	Lowest	Mortar:	Special bricks

Checked Interpretation

---



---



---

Provisional period	Group	Structure No	Initials & Date
--------------------	-------	--------------	-----------------



Grid Squares	Area/Trench	Context Type <del>Area</del> <u>Fill</u>	Site Code <u>HN+FI9</u>	Context <u>21</u>
--------------	-------------	---	----------------------------	----------------------

Add. Sheets	Plan Nos. <u>/</u>	Section Nos. <u>10</u>	Matrix Location
-------------	-----------------------	---------------------------	-----------------

Photographs Slide <u>6484 - 6486</u>	B&W <u>FI #8</u>	DEPOSIT
--------------------------------------	------------------	---------

Description

1 FRIABLE

2 DARK BROWN GREY

3 CLAY SILT

4 ROOTING & FLINTS

5 0.5m

6 1.5m w, 0.5m L (TOCCE)

DEPOSIT

1 Compaction      2 Colour

3 Composition      4 Inclusions

5 Thickness      6 Extent

7 Comments

8 Method and Conditions

CUT

1 Shape in plan      2 Corners

3 Dimensions/Depth

4 Break of slope-top      5 Sides

6 Break of slope-base      7 Base

8 Orientation

9 Inclination of axis

10 Truncation      11 Fill Nos.

12 Sketch profile

13 Other comments

Stratigraphic matrix

<input type="checkbox"/>	<input type="checkbox"/>	<u>(15)</u>	<input type="checkbox"/>	<input type="checkbox"/>
This context is		<u>(21)</u>	<input type="checkbox"/>	<input type="checkbox"/>
<input type="checkbox"/>	<input type="checkbox"/>	<u>20</u>	<input type="checkbox"/>	<input type="checkbox"/>

Initials & Date

SK 13/9/19

Checked by & Date

Interpretation: Internal    External    Structural    Other (specify)

Discussion

BACKFILL OF FOUNDATION CUT [19]

Context same as: <u>/</u>	Finds
Levels on plan <input type="checkbox"/> sheet	none <input checked="" type="checkbox"/> pot <input type="checkbox"/> bone <input type="checkbox"/> glass <input type="checkbox"/> metal <input type="checkbox"/> CBM <input type="checkbox"/> wood <input type="checkbox"/> leather <input type="checkbox"/> burntmat.
Highest <input type="checkbox"/> Lowest <input type="checkbox"/>	Other finds (specify)

Environmental Samples Nos. /      Finds sample (BM) Nos. /

Small finds Nos. /

Finds sieving: on-site  off-site  metal detecting: in situ  on-site  off-site

Checked Interpretation

Provisional Period	Group	Initials & Date
--------------------	-------	-----------------



Grid Squares	Area/Trench	Context Type DEPOSIT	Site Code HNHF19	Context 22
--------------	-------------	-------------------------	---------------------	---------------

Add. Sheets	Plan Nos.	Section Nos. 19	Matrix Location
-------------	-----------	--------------------	-----------------

Photographs Slide B&W  
144707083

**DEPOSIT**

1 Compaction	2 Colour
3 Composition	4 Inclusions
5 Thickness	6 Extent
7 Comments	
8 Method and Conditions	

**Description**

1 LOOSE

2 LIGHT BROWN YELLOW

3 GRAVEL

4 SMALL - MED ANG. FLINTS

5 0-6m

6 UNCERTAIN

**CUT**

1 Shape in plan	2 Corners
3 Dimensions/Depth	
4 Break of slope-top	5 Sides
6 Break of slope-base	7 Base
8 Orientation	
9 Inclination of axis	
10 Truncation	11 Fill Nos.
12 Sketch profile	
13 Other comments	

**Stratigraphic matrix**

<input type="checkbox"/>	<input type="checkbox"/>	(17)	<input type="checkbox"/>	<input type="checkbox"/>
This context is		(22)	<input type="checkbox"/>	<input type="checkbox"/>
<input type="checkbox"/>	<input type="checkbox"/>	(23)	<input type="checkbox"/>	<input type="checkbox"/>

**Initials & Date**  
SK 13/9/19

**Checked by & Date**

Interpretation: Internal  External  Structural  Other (specify)

**Discussion**

~~BELOW GRAVEL~~

MADE GROUND

Context same as:  sheet

Levels on plan  Highest  Lowest

**Finds**

none  pot  bone  glass  metal  CBM  wood  leather  burntmat.

Other finds (specify)

Environmental Samples Nos.

Finds sample (BM) Nos.

Small finds Nos.

Finds sieving: on-site  off-site  metal detecting: in situ  on-site  off-site

Checked Interpretation

Provisional Period  Group  Initials & Date



Grid Squares	Area/Trench	Context Type <i>DEPOSIT</i>	Site Code <i>HNHF19</i>	Context <i>23</i>
--------------	-------------	--------------------------------	----------------------------	----------------------

Add. Sheets	Plan Nos. <i>/</i>	Section Nos. <i>19</i>	Matrix Location
-------------	-----------------------	---------------------------	-----------------

Photographs Slide *144707083* B&W

**DEPOSIT**

1 Compaction	2 Colour
3 Composition	4 Inclusions
5 Thickness	6 Extent
7 Comments	
8 Method and Conditions	

Description | *LOOSE*

*2 LIGHT WHITE YELLOW*

*3 GRAVEL*

*4 WELL SORTED SMALL ROUNDED GRAVELS*

*w/ SOME MED. SUBANG. FLINT*

*5 0.26m*

*6 UNCERTAIN*

**CUT**

1 Shape in plan	2 Corners
3 Dimensions/Depth	
4 Break of slope-top	5 Sides
6 Break of slope-base	7 Base
8 Orientation	
9 Inclination of axis	
10 Truncation	11 Fill Nos.
12 Sketch-profile	
13 Other comments	

Stratigraphic matrix

<input type="checkbox"/>	<input type="checkbox"/>	<i>(22)</i>	<input type="checkbox"/>	<input type="checkbox"/>
This context is		<i>(23)</i>	<input type="checkbox"/>	<input type="checkbox"/>
<input type="checkbox"/>	<input type="checkbox"/>	<i>(24)</i>	<input type="checkbox"/>	<input type="checkbox"/>

Initials & Date  
*SK 13/9/19*

Checked by & Date

Interpretation: Internal  External  Structural  Other (specify)

Discussion  
*COLLUVIAL GRAVEL.*

Context same as:  Finds

Levels on plan  sheet Highest Lowest

none pot bone glass metal CBM wood leather burntmat.

Other finds (specify)

Environmental Samples Nos.  Finds sample (BM) Nos.

Small finds Nos. Finds sieving: on-site  off-site  metal detecting: in situ  on-site  off-site

Checked Interpretation

Provisional Period  Group  Initials & Date



Grid Squares	Area/Trench	Context Type <i>LAYER</i>	Site Code <i>HNHF19</i>	Context <i>(24)</i>
--------------	-------------	------------------------------	----------------------------	------------------------

Add. Sheets	Plan Nos.	Section Nos. <i>19</i>	Matrix Location
-------------	-----------	---------------------------	-----------------

Photographs Slide *144707088* B&W

**DEPOSIT**

1 Compaction	2 Colour
3 Composition	4 Inclusions
5 Thickness	6 Extent
7 Comments	
8 Method and Conditions	

**Description** *1 COMPACT*  
*2 LIGHT YELLOW WHITE*  
*3 CHALK*  
*4 FLINTS*  
*5 0.5m TO LOG.*

**CUT**

1 Shape in plan	2 Corners
3 Dimensions/Depth	
4 Break of slope-top	5 Sides
6 Break of slope-base	7 Base
8 Orientation	
9 Inclination of axis	
10 Truncation	11 Fill Nos.
12 Sketch profile	
13 Other comments	

**Stratigraphic matrix**

<input type="checkbox"/>	<input type="checkbox"/>	<input checked="" type="checkbox"/> <i>(23)</i>	<input type="checkbox"/>	<input type="checkbox"/>
This context is		<input checked="" type="checkbox"/> <i>(24)</i>	<input type="checkbox"/>	<input type="checkbox"/>
<input type="checkbox"/>	<input type="checkbox"/>	<input type="checkbox"/>	<input type="checkbox"/>	<input type="checkbox"/>

**Initials & Date**  
*SK 13/9/19*

**Checked by & Date**

Interpretation: Internal  External  Structural  Other (specify)

**Discussion**  
*NATURAL CHACK*

**Context same as:**

Levels on plan  sheet Highest Lowest

**Finds**

none  pot  bone  glass  metal  CBM  wood  leather  burntmat.

Other finds (specify)

Environmental Samples Nos.

Finds sample (BM) Nos.

Small finds Nos.

Finds sieving: on-site  off-site  metal detecting: in situ  on-site  off-site

**Checked Interpretation**

Provisional Period  Group  Initials & Date



Grid Squares	Area/Trench	Context Type <u>CUT</u>	Site Code <u>HNHF19</u>	Context <u>25</u>
--------------	-------------	----------------------------	----------------------------	----------------------

Add. Sheets	Plan Nos.	Section Nos. <u>13-18</u>	Matrix Location
-------------	-----------	------------------------------	-----------------

Photographs Slide GEDC 1969 - GEDC - 1988 B&W

**DEPOSIT**

1 Compaction	2 Colour
3 Composition	4 Inclusions
5 Thickness	6 Extent
7 Comments	
8 Method and Conditions	

Description 1 LINEAR

2 SQUARE

3 c. 23m L, UNCERTAIN WIDTH, 0.56m DEEP

4 - 6 NOT SEEN

7 FLAT

8 NW - SE

9 VERTICAL

11 (27)

**CUT**

1 Shape in plan	2 Corners
3 Dimensions/Depth	
4 Break of slope-top	5 Sides
6 Break of slope-base	7 Base
8 Orientation	
9 Inclination of axis	
10 Truncation	11 Fill Nos.
12 Sketch profile	
13 Other comments	

Stratigraphic matrix

<input type="checkbox"/>	<input type="checkbox"/>	<input checked="" type="checkbox"/> <u>26</u>	<input type="checkbox"/>	<input type="checkbox"/>
This context is		<input checked="" type="checkbox"/> <u>25</u>	<input type="checkbox"/>	<input type="checkbox"/>
<input type="checkbox"/>	<input type="checkbox"/>	<input checked="" type="checkbox"/> <u>(1)</u>	<input type="checkbox"/>	<input type="checkbox"/>

Initials & Date  
SK 13/9/19

Checked by & Date

Interpretation: Internal External Structural Other (specify)

Discussion FOUNDATION CUT FOR BARN 26

Context same as:

Levels on plan <input type="checkbox"/> sheet	none	pot	bone	glass	metal	CBM	wood	leather	burntmat.
Highest <input type="checkbox"/>	<input type="checkbox"/>	<input type="checkbox"/>	<input type="checkbox"/>	<input type="checkbox"/>	<input type="checkbox"/>	<input type="checkbox"/>	<input type="checkbox"/>	<input type="checkbox"/>	<input type="checkbox"/>
Lowest <input type="checkbox"/>	Other finds (specify)								

Environmental Samples Nos.                      Finds sample (BM) Nos.                     

Small finds Nos. Finds sieving: on-site  off-site  metal detecting: in situ  on-site  off-site

Checked Interpretation

Provisional Period Group Initials & Date



Grid Squares	Area/Trench	MASONRY WALL	Site Code HNHF19	Context 26
--------------	-------------	-----------------	---------------------	---------------

Add. Sheets	Plan Nos.	Section Nos. 13-18	Matrix Location
-------------	-----------	-----------------------	-----------------

Photographs Slide GEDC 1964-1988	B&W	1 Materials
-------------------------------------	-----	-------------

Description	1 BRICK	2 Size of materials (brick: BLT in mm)
2	<del>25 x 25 x 65mm</del> 102mm x 215mm x 65mm	3 Finish of stones
4	STRETCHER BOND	4 Coursing/bond
5	WALL	5 Form
6	NE-SW	6 Direction of face(s)
7	MORTAR	7 Bonding material
8	c. 23m LONG.	8 Dimensions as found
		9 Other comments

Stratigraphic matrix	Initials & Date															
<table border="1"> <tr> <td></td> <td></td> <td>(27)</td> <td></td> <td></td> </tr> <tr> <td>This context is</td> <td></td> <td>(26)</td> <td></td> <td></td> </tr> <tr> <td></td> <td></td> <td>(25)</td> <td></td> <td></td> </tr> </table>			(27)			This context is		(26)					(25)			SR 13/9/19
		(27)														
This context is		(26)														
		(25)														
	Checked by & Date															

Interpretation:	Internal	External	NORTH EAST BARN WALL
-----------------	----------	----------	----------------------

Associated contexts: (25) (27)

Context same as:

Worked stones:

Levels on plan	sheet	Samples Petrological:	Regular bricks
Highest	Lowest	Mortar:	Special bricks

Checked Interpretation

Provisional period	Group	Structure No	Initials & Date
--------------------	-------	--------------	-----------------



Grid Squares	Area/Trench	Context Type <b>Fill</b>	Site Code <b>HNHFI9</b>	Context <b>27</b>
--------------	-------------	-----------------------------	----------------------------	----------------------

Add. Sheets	Plan Nos.	Section Nos. <b>13-18</b>	Matrix Location
-------------	-----------	------------------------------	-----------------

Photographs Slide **GEDC 1969-GEDC 1988** B&W

**DEPOSIT**

1 Compaction	2 Colour
3 Composition	4 Inclusions
5 Thickness	6 Extent
7 Comments	
8 Method and Conditions	

Description **1 LOOSE**

**2 DARK BROWN GREY**

**3 ~~SILT~~ CLAY SILT**

**4 ROOTING, CBM, SMALL SUB ANGLE FUNDS**

**5 0.42m**

**6 c. 23m L, UNCERTAIN WIDTH**

**CUT**

1 Shape in plan	2 Corners
3 Dimensions/Depth	
4 Break of slope-top	5 Sides
6 Break of slope-base	7 Base
8 Orientation	
9 Inclination of axis	
10 Truncation	11 Fill Nos.
12 Sketch profile	
13 Other comments	

Stratigraphic matrix

<input type="checkbox"/>	<input type="checkbox"/>	<input checked="" type="checkbox"/> (1)	<input type="checkbox"/>	<input type="checkbox"/>
This context is		<input checked="" type="checkbox"/> (27)	<input type="checkbox"/>	<input type="checkbox"/>
<input type="checkbox"/>	<input type="checkbox"/>	<input checked="" type="checkbox"/> (26)	<input type="checkbox"/>	<input type="checkbox"/>

Initials & Date  
**SK 13/9/19**

Checked by & Date

Interpretation: Internal External **Structural** Other (specify)

Discussion **BACK FILL OF FOUNDATION TRENCH**

**[25]**

Context same as:  Finds

Levels on plan <input type="checkbox"/> sheet	none	pot	bone	glass	metal	CBM	wood	leather	burntmat.
Highest	<input checked="" type="checkbox"/>	<input type="checkbox"/>	<input type="checkbox"/>	<input type="checkbox"/>	<input type="checkbox"/>	<input type="checkbox"/>	<input type="checkbox"/>	<input type="checkbox"/>	<input type="checkbox"/>
Lowest	Other finds (specify)								

Environmental Samples Nos. Finds sample (BM) Nos.

Small finds Nos. Finds sieving: on-site  off-site  metal detecting: in situ  on-site  off-site

Checked Interpretation

Provisional Period Group Initials & Date



Grid Squares	Area/Trench BEHIND COTTAGE	Context Type LAYER	Site Code HNHA 19	Context (28)
--------------	----------------------------------	-----------------------	----------------------	-----------------

Add. Sheets	Plan Nos.	Section Nos. 5. 20, 21	Matrix Location
-------------	-----------	---------------------------	-----------------

Photographs Slide B&W  
DICE: 7, 10

Description 1. FRIABLE 2. DARK BROWN  
GRAY 3. SANDY SILT  
4. -  
5. 0.1 - 0.2m  
6. WHOLE AREA OF EXCAVATION

DEPOSIT

1 Compaction	2 Colour
3 Composition	4 Inclusions
5 Thickness	6 Extent
7 Comments	
8 Method and Conditions	

CUT

1 Shape in plan	2 Corners
3 Dimensions/Depth	5 Sides
4 Break of slope-top	7 Base
6 Break of slope-base	
8 Orientation	
9 Inclination of axis	
10 Truncation	11 Fill Nos.
12 Sketch profile	
13 Other comments	

Stratigraphic matrix

<input type="checkbox"/>	<input type="checkbox"/>	<input checked="" type="checkbox"/>	<input type="checkbox"/>	<input type="checkbox"/>
This context is		(28)		
<input type="checkbox"/>	<input type="checkbox"/>	<input type="checkbox"/>	<input type="checkbox"/>	<input type="checkbox"/>

Initials & Date  
TJG  
23/7/20

Checked by & Date

Interpretation: Internal External Structural Other (specify)

Discussion TOPSOIL / TURF, AS ENCOUNTERED  
BYM DURING GROUND REDUCTION BEHIND  
COTTAGE FARM HOUSE

Context same as:  Finds

Levels on plan <input type="checkbox"/> sheet	none	pot	bone	glass	metal	CBM	wood	leather	burntmat.
Highest <input type="checkbox"/> Lowest <input type="checkbox"/>	<input checked="" type="checkbox"/>	<input type="checkbox"/>	<input type="checkbox"/>	<input type="checkbox"/>	<input type="checkbox"/>	<input type="checkbox"/>	<input type="checkbox"/>	<input type="checkbox"/>	<input type="checkbox"/>

Other finds (specify)

Environmental Samples Nos.  Finds sample (BM) Nos.

Small finds Nos. Finds sieving: on-site  off-site  metal detecting: in situ  on-site  off-site

Checked Interpretation

Provisional Period  Group  Initials & Date



Grid Squares	Area/Trench DEMEND FARMHOUSE	Context Type LATER	Site Code HNHF19	Context (29)
--------------	------------------------------------	-----------------------	---------------------	-----------------

Add. Sheets	Plan Nos. 	Section Nos. S-20, 21	Matrix Location
-------------	---------------	--------------------------	-----------------

Photographs Slide B&W  
 DIGS: 7, 10

**DEPOSIT**

1 Compaction	2 Colour
3 Composition	4 Inclusions
5 Thickness	6 Extent
7 Comments	
8 Method and Conditions	

**Description**

1. FINEABLE 2. MID  
 GRAY 3. SANDY SILT  
 4. OCCASIONAL SURFACE FLINT <  
 50MM  
 S.  
 6. WHOLE AREA OF EXCAVATION  
 7. MACHINE DUG, GROUND BAW

**CUT**

1 Shape in plan	2 Corners
3 Dimensions/Depth	
4 Break of slope-top	5 Sides
6 Break of slope-base	7 Base
8 Orientation	
9 Inclination of axis	
10 Truncation	11 Fill Nos.
12 Sketch profile	
13 Other comments	

**Stratigraphic matrix**

<input type="checkbox"/>	<input type="checkbox"/>	(29)	<input type="checkbox"/>	<input type="checkbox"/>
This context is		(29)		
<input type="checkbox"/>	<input type="checkbox"/>	(33)	<input type="checkbox"/>	<input type="checkbox"/>

**Initials & Date**  
 TRJ  
 23/7/20

**Checked by & Date**

Interpretation: Internal    External    Structural    Other (specify)

**Discussion** SUBSOIL - FORMER GARDEN SOIL,  
 ENCOUNTERED DURING GROUND REDUCTION TO NEAR  
 OF FARM HOUSE

Context same as:	Finds
Levels on plan <input type="checkbox"/> sheet	none <input checked="" type="checkbox"/> pot <input type="checkbox"/> bone <input type="checkbox"/> glass <input type="checkbox"/> metal <input type="checkbox"/> CBM <input type="checkbox"/> wood <input type="checkbox"/> leather <input type="checkbox"/> burntmat. <input type="checkbox"/>
Highest <input type="checkbox"/> Lowest <input type="checkbox"/>	Other finds (specify)

Environmental Samples Nos.                      Finds sample (BM) Nos.

Small finds Nos.  
 Finds sieving: on-site  off-site  metal detecting: in situ  on-site  off-site

Checked Interpretation

Provisional Period                      Group                      Initials & Date



Grid Squares	Area/Trench BENTON FARMHOUSE	Context Type LAYER	Site Code HNMF 19	Context (30)
--------------	------------------------------------	-----------------------	----------------------	-----------------

Add. Sheets	Plan Nos. 1	Section Nos. S.20, 21	Matrix Location
-------------	----------------	--------------------------	-----------------

Photographs Slide B&W  
DIGIT: PHOTOS 14, 15

DEPOSIT

1 Compaction	2 Colour
3 Composition	4 Inclusions
5 Thickness	6 Extent
7 Comments	
8 Method and Conditions	

Description

1. COMPACT
2. MID YELLOW BROWN
3. COARSE FLINT GRAVEL WITHIN A SANDY SILT MATRIX
4. ✓
5. NOT EXCAVATED
6. WHOLE AREA OF EXCAVATION
- 7.
8. MACHINE CLEANED. GROUND AMP

CUT

1 Shape in plan	2 Corners
3 Dimensions/Depth	
4 Break of slope-top	5 Sides
6 Break of slope-base	7 Base
8 Orientation	
9 Inclination of axis	
10 Truncation	11 Fill Nos.
12 Sketch profile	
13 Other comments	

Stratigraphic matrix

<input type="checkbox"/>	<input type="checkbox"/>	<input checked="" type="checkbox"/>	<input type="checkbox"/>	<input type="checkbox"/>
This context is		<input type="checkbox"/>	<input type="checkbox"/>	<input type="checkbox"/>
<input type="checkbox"/>	<input type="checkbox"/>	<input checked="" type="checkbox"/>	<input type="checkbox"/>	<input type="checkbox"/>

Initials & Date  
TRJ  
23/7/20

Checked by & Date

Interpretation: Internal    External    Structural    Other (specify)

Discussion NATURAL FLINT GRAVELS, AS SEEN DURING GROUND REDUCTION TO REAR OF FARMHOUSE

Context same as:  Finds

Levels on plan <input type="checkbox"/> sheet	none	pot	bone	glass	metal	CBM	wood	leather	burntmat.
Highest	<input checked="" type="checkbox"/>	<input type="checkbox"/>	<input type="checkbox"/>	<input type="checkbox"/>	<input type="checkbox"/>	<input type="checkbox"/>	<input type="checkbox"/>	<input type="checkbox"/>	<input type="checkbox"/>
Lowest	Other finds (specify)								

Environmental Samples Nos.    Finds sample (BM) Nos.

Small finds Nos. Finds sieving: on-site  off-site  metal detecting: in situ  on-site  off-site

Checked Interpretation

Provisional Period    Group    Initials & Date



Grid Squares	Area/Trench BEMING FARMHOUSE	Context Type CUT	Site Code 1-NHF19	Context (31)
--------------	------------------------------------	---------------------	----------------------	-----------------

Add. Sheets	Plan Nos. J /	Section Nos. /	Matrix Location
-------------	------------------	-------------------	-----------------

Photographs Slide B&W  
DIGI: 12, 13

Description 1- SQUARE 2. 90°  
3. 1.8m x 1.3m  
4. SHARP 5. VERTICAL 6. NOT EXCAVATED  
7. NOT EXCAVATED  
8. / /  
10. CUTS NATURAL (30)  
11. (32) (33)

DEPOSIT

1 Compaction	2 Colour
3 Composition	4 Inclusions
5 Thickness	6 Extent
7 Comments	
8 Method and Conditions	

CUT

1 Shape in plan	2 Corners
3 Dimensions/Depth	
4 Break of slope-top	5 Sides
6 Break of slope-base	7 Base
8 Orientation	
9 Inclination of axis	
10 Truncation	11 Fill Nos.
12 Sketch profile	
13 Other comments	

Stratigraphic matrix

		(32)		
This context is		(31)		
		(30)		

Initials & Date  
TJG  
22/7/20

Checked by & Date

Interpretation: Internal External Structural Other (specify)

Discussion CONSTRUCTION CUT OF SMALL SQUARE OUT  
BUILDING, POSSIBLY PREV. LOCATED TO  
REAR OF FARMHOUSE

Context same as:

Levels on plan	sheet	highest	lowest

Findings: none pot bone glass metal CBM wood leather burntmat.

Other finds (specify)

Environmental Samples Nos. Findings sample (BM) Nos.

Small finds Nos. Findings sieving: on-site off-site metal detecting: in situ on-site off-site

Checked Interpretation

Provisional Period Group Initials & Date



Grid Squares	Area/Trench REAR OF FARMHOUSE	MASONRY TOILET	Site Code HNMF19	Context (32)
--------------	-------------------------------------	-------------------	---------------------	-----------------

Add. Sheets	Plan Nos. 1	Section Nos.	Matrix Location
-------------	-------------	--------------	-----------------

Photographs Slide DIGI: 12, 13	B&W	<ol style="list-style-type: none"> <li>1 Materials</li> <li>2 Size of materials (brick: BLT in mm)</li> <li>3 Finish of stones</li> <li>4 Coursing/bond</li> <li>5 Form</li> <li>6 Direction of face(s)</li> <li>7 Bonding material</li> <li>8 Dimensions as found</li> <li>9 Other comments</li> </ol>
Description		
1. BRICK 2. 222 x 103 x 61 mm		
3. /		
4. RANDOM / STRETCHER		
5. FOUNDATION		
6. N, E, W		
7. WHITISH GRAY MORTAR		
8. 1.8m x 1.3m		

<p>Stratigraphic matrix</p> <table style="width:100%; text-align: center;"> <tr> <td style="border: 1px solid black; width: 20px; height: 20px;"></td> <td style="border: 1px solid black; width: 20px; height: 20px;"></td> <td style="border: 1px solid black; width: 20px; height: 20px;">(33)</td> <td style="border: 1px solid black; width: 20px; height: 20px;"></td> <td style="border: 1px solid black; width: 20px; height: 20px;"></td> </tr> <tr> <td colspan="2">This context is</td> <td style="border: 1px solid black;">(32)</td> <td colspan="2"></td> </tr> <tr> <td style="border: 1px solid black; width: 20px; height: 20px;"></td> <td style="border: 1px solid black; width: 20px; height: 20px;"></td> <td style="border: 1px solid black; width: 20px; height: 20px;">(30)</td> <td style="border: 1px solid black; width: 20px; height: 20px;"></td> <td style="border: 1px solid black; width: 20px; height: 20px;"></td> </tr> </table>			(33)			This context is		(32)					(30)			<p>Initials &amp; Date 23/7/20 TMS</p> <hr/> <p>Checked by &amp; Date</p>
		(33)														
This context is		(32)														
		(30)														

Interpretation: Internal External FOUNDATIONS OF FORMER OUTDOOR TOILET / PRIVY

---

Associated contexts: \_\_\_\_\_

Context same as: \_\_\_\_\_

Worked stones: \_\_\_\_\_

Levels on plan	sheet	Samples Petrological:	Regular bricks
Highest	Lowest	Mortar:	Special bricks

Checked Interpretation \_\_\_\_\_

---



---

Provisional period	Group	Structure No	Initials & Date
--------------------	-------	--------------	-----------------



Grid Squares	Area/Trench DITCH FARMHOUSE	Context Type FILL	Site Code MNHF 19	Context (33)
--------------	-----------------------------------	----------------------	----------------------	-----------------

Add. Sheets	Plan Nos. 1	Section Nos. ←	Matrix Location
-------------	----------------	-------------------	-----------------

Photographs Slide B&W  
DIGI: 12, 13

**DEPOSIT**

1 Compaction	2 Colour
3 Composition	4 Inclusions
5 Thickness	6 Extent
7 Comments	
8 Method and Conditions	

Description

1. LOOSE
2. MID GRN
3. SANDY SILT
4. FINE FLINT GRAVEL < 100mm CONCRETE FRAGMENTS
5. UNEXCAVATED
6. ~~WOOD~~ 1.2m x 1.7m
7. ✓
8. ↓

**CUT**

1 Shape in plan	2 Corners
3 Dimensions/Depth	
4 Break of slope-top	5 Sides
6 Break of slope-base	7 Base
8 Orientation	
9 Inclination of axis	
10 Truncation	11 Fill Nos.
12 Sketch profile	
13 Other comments	

**Stratigraphic matrix**

<input type="checkbox"/>	<input type="checkbox"/>	<input checked="" type="checkbox"/> (29)	<input type="checkbox"/>	<input type="checkbox"/>
This context is		<input checked="" type="checkbox"/> (33)	<input type="checkbox"/>	<input type="checkbox"/>
<input type="checkbox"/>	<input type="checkbox"/>	<input checked="" type="checkbox"/> (32)	<input type="checkbox"/>	<input type="checkbox"/>

**Initials & Date**  
JRJ  
23/7/20

**Checked by & Date**

Interpretation: Internal    External    Structural    Other (specify)

**Discussion** FILL OF SQUARE STRUCTURE (32). (CRAIL) BACKFILL DITCHED AFTER STRUCTURE WAS DECOMMISSIONED

**Context same as:**  **Finds**

Levels on plan <input type="checkbox"/> sheet	none	pot	bone	glass	metal	CBM	wood	leather	burntmat.
Highest	<input checked="" type="checkbox"/>	<input type="checkbox"/>	<input type="checkbox"/>	<input type="checkbox"/>	<input type="checkbox"/>	<input type="checkbox"/>	<input type="checkbox"/>	<input type="checkbox"/>	<input type="checkbox"/>
Lowest	Other finds (specify)								

Environmental Samples Nos.    Finds sample (BM) Nos.

Small finds Nos.  
Finds sieving: on-site  off-site  metal detecting: in situ  on-site  off-site

Checked Interpretation

Provisional Period    Group    Initials & Date



















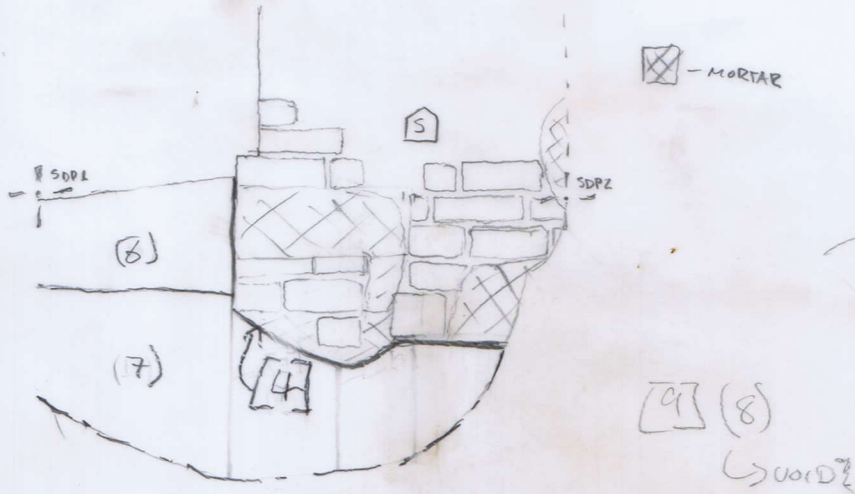
S.O1 HNHF19 1:20  
SEC #1

SE FACING SECTION OF A2.

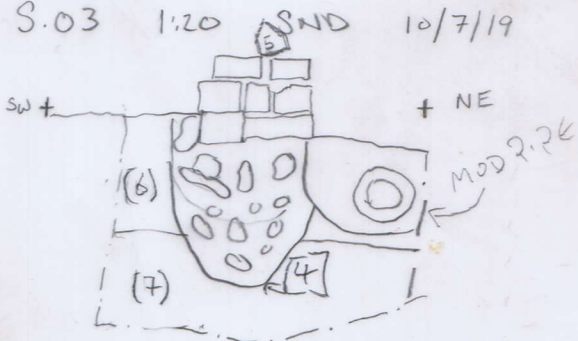


S.O2  
SEC #2

NW FACING SECTION OF A3 INCLUDING FOUNDATION

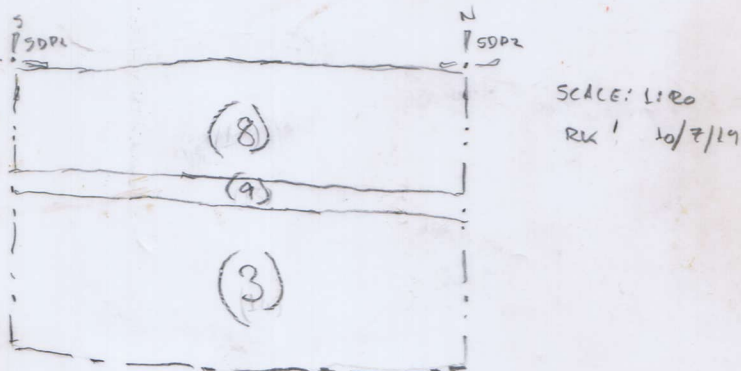


HNHF19  
S.O3 1:20 SND 10/7/19



S.O4

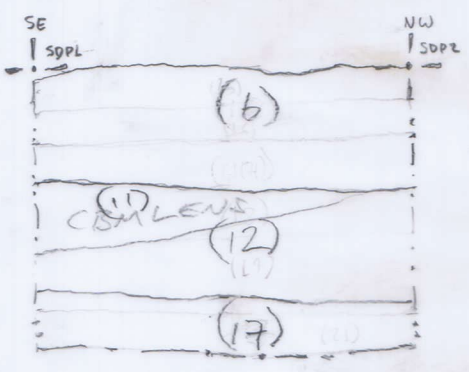
E FACING SECTION OF SLOT IN A3.



WHERE IS  
A3?

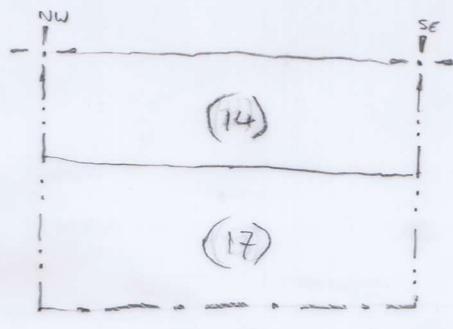


S.05  
NE FACING REP SEC.



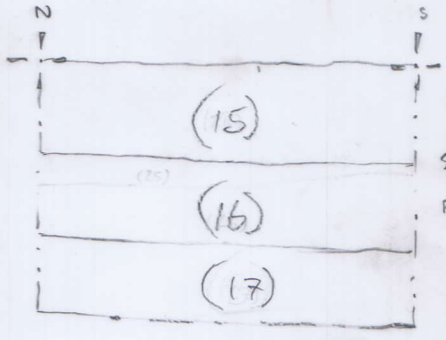
SCALE: 1:20  
RX 10/7/19

S.06: NE FACING REP SEC BY BARN



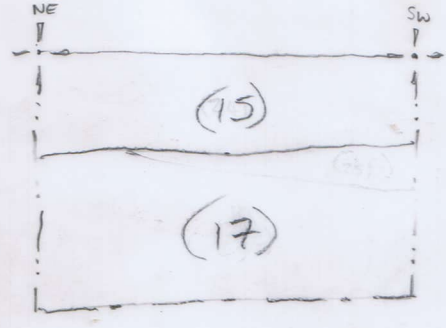
SCALE: 1:20  
RX 5/8/19

S.07: W FACING REP. SEC  
OF SERVICE TRENCH TO  
FARM HOUSE.



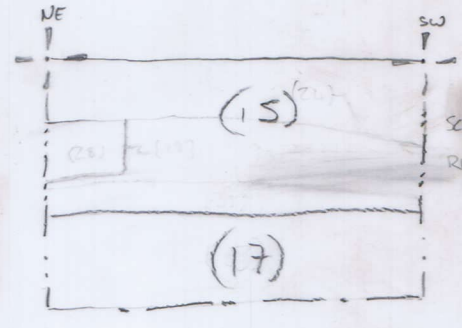
SCALE: 1:20  
RX 5/8/19

S.08: NW FACING REP  
SEC. CARRYING ON FROM  
S.07.



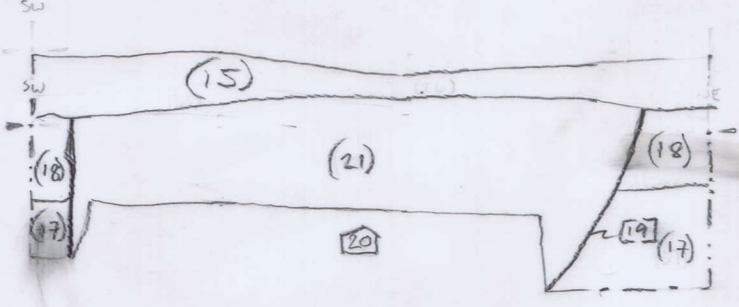
SCALE: 1:20  
RX 5/8/19

S.09: NW FACING REP  
SEC.



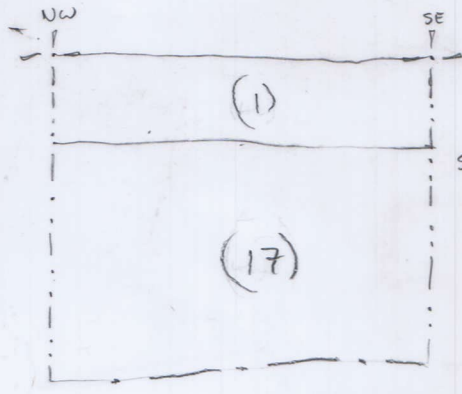
SCALE: 1:20  
RX 5/8/19

S.10: SE FACING SECTION OF CONCRETE  
BASE 33.



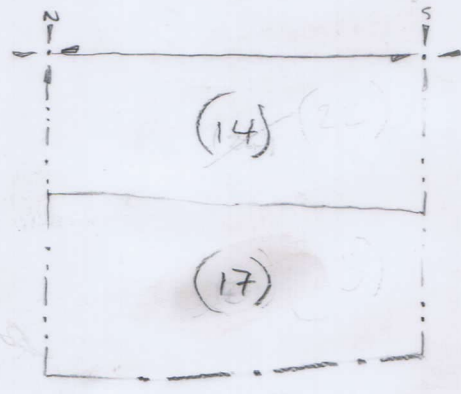
SCALE: 1:20  
RX 5/8/19

S.11: SW FACING REP SEC  
OF A.I.



SCALE: 1:20  
RX 5/8/19

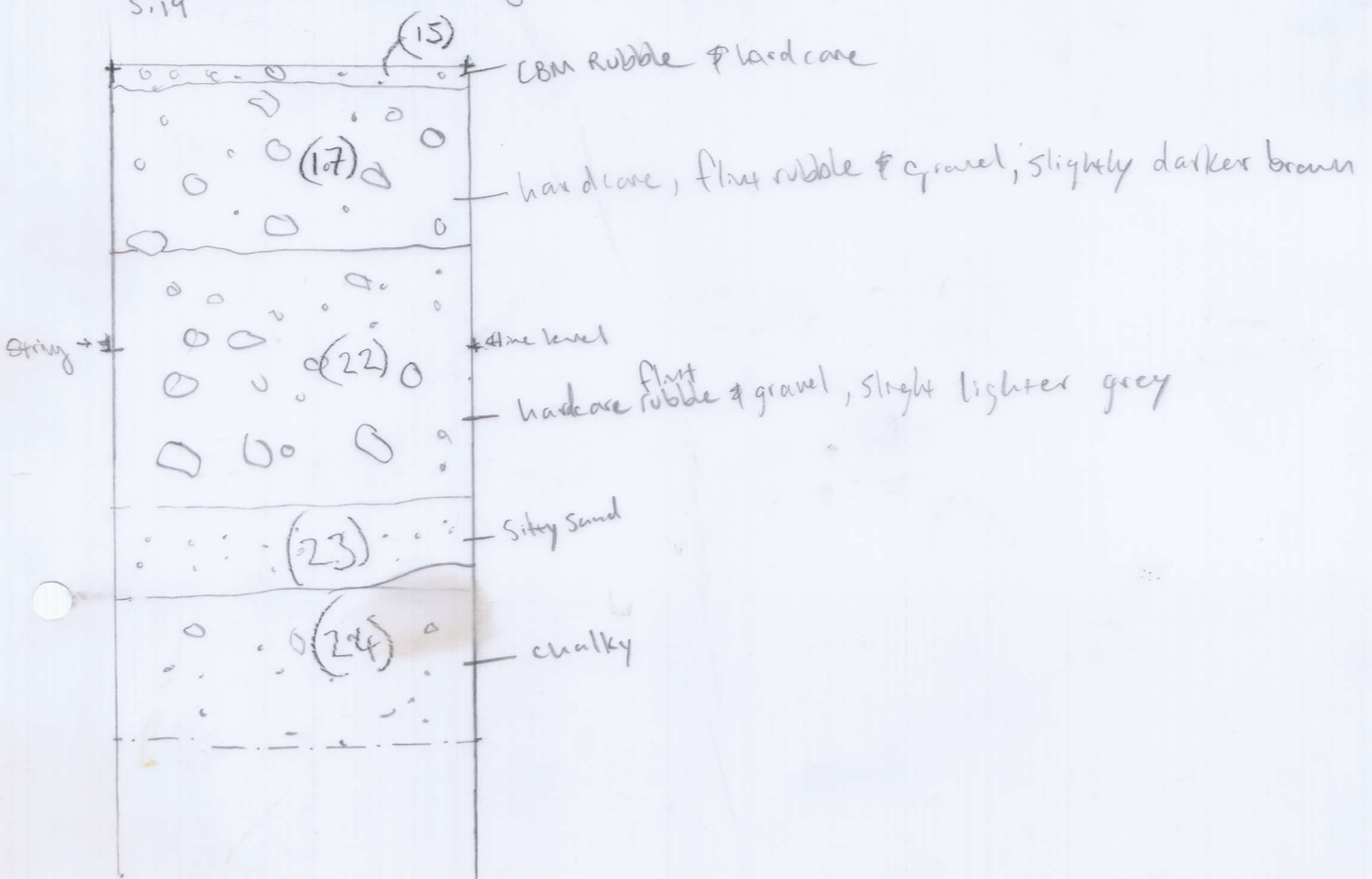
S.12: W FACING REP SEC OF  
BARN FOUNDATION.



SCALE: 1:20  
RX 5/8/19



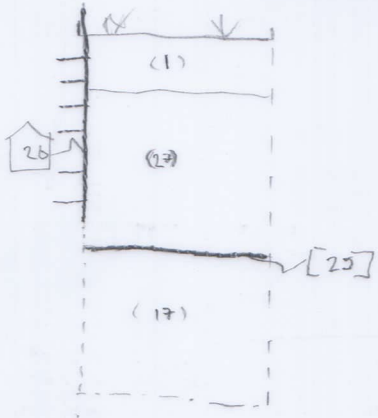
S. 19: Rep See for Soakaway.  
S. 19



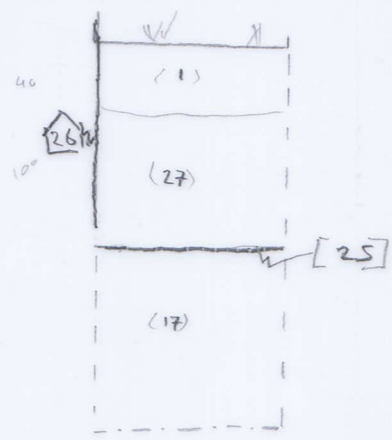


S.13 FP1 S.14

S.13 1:20

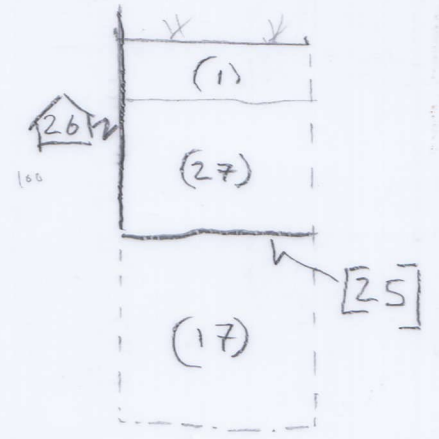


FP2 S.14 1:20

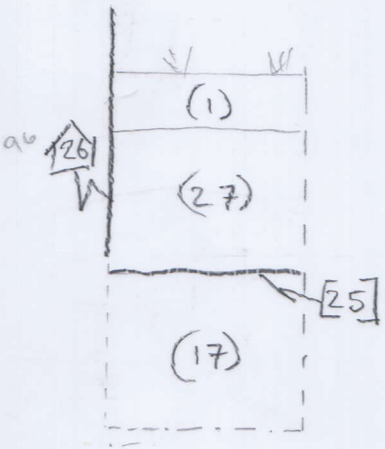


S.15

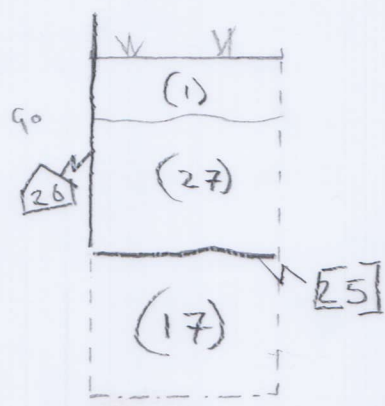
FP3 S.15 1:20



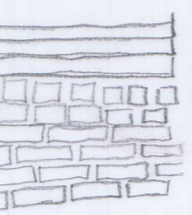
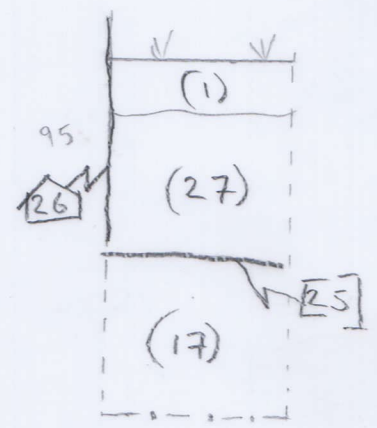
FP4 S.16 1:20



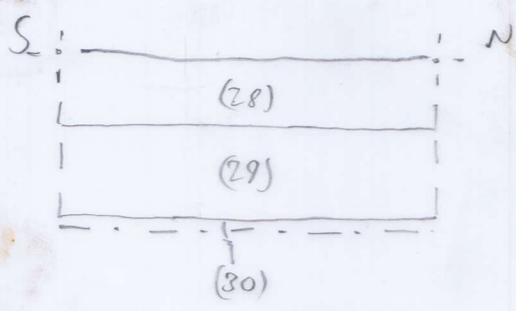
FP5 S.17 1:20



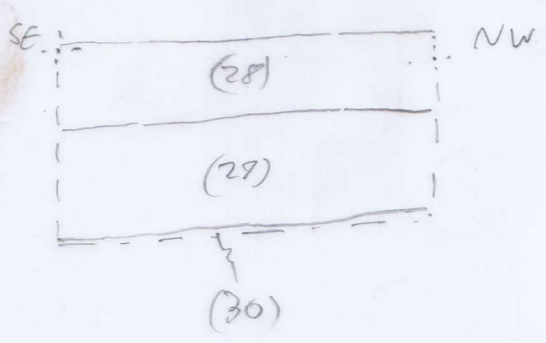
FP6 S.18 1:20







HNHF19 S.20  
1:20 23/7/20 TRJ



HNHF19 S.21  
1:20 23/7/20 TRJ