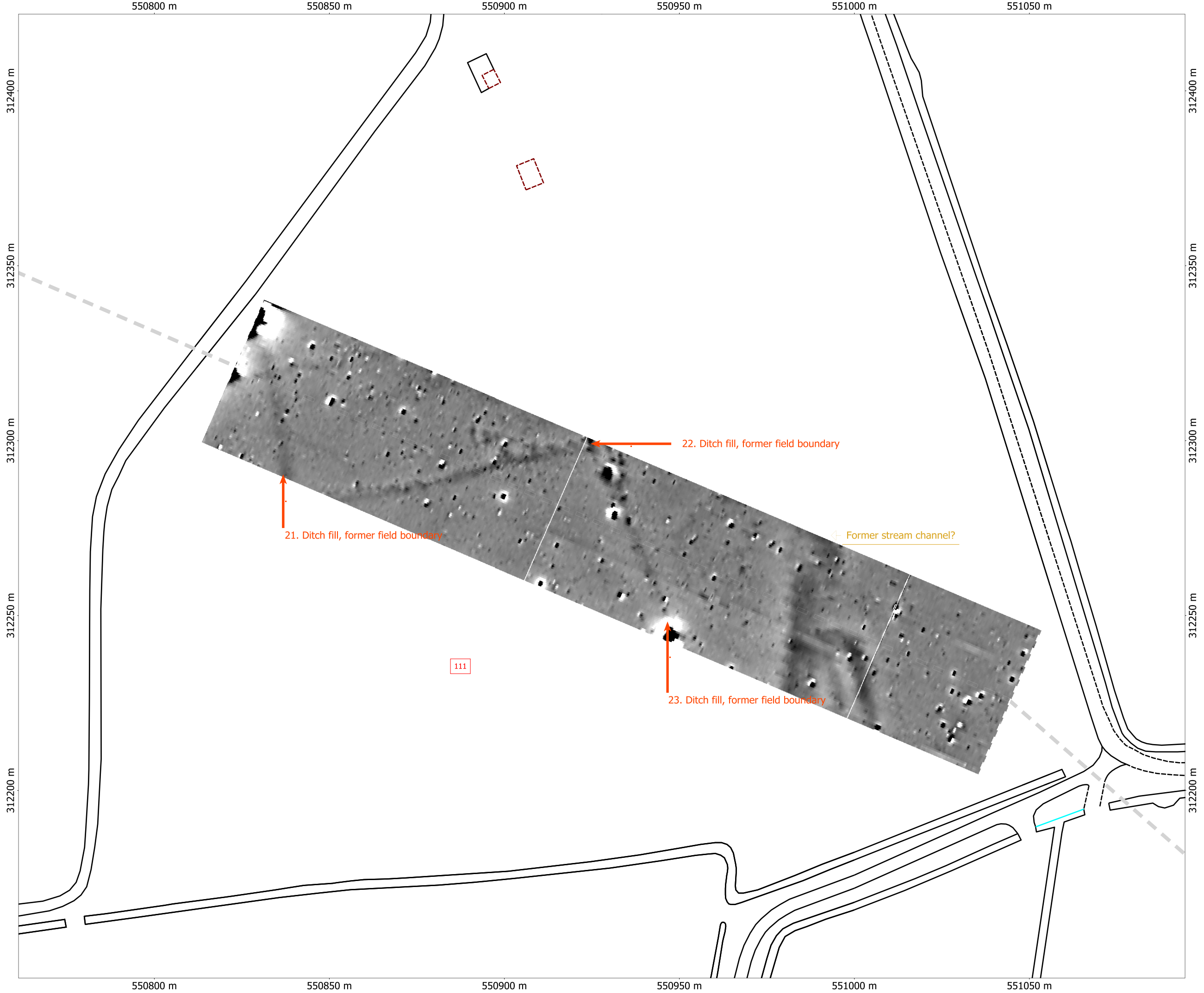
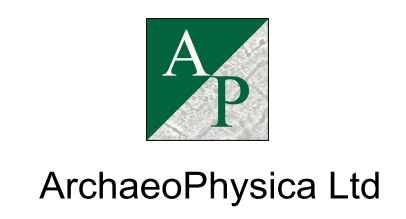


Project Name:  
Kings Lynn to Wisbech Pipeline  
Project Code:  
KLW061  
Client:  
Network Archaeology



Pseudogradiant data  
White -5 nT/m: Black +5 nT/m  
DWG 19



Orthographic  
Centre X: 550927.84 m  
Centre Y: 312284.16 m  
Scale: 1:1000 @ A3  
Spatial Units: Meter  
File: KLW GIS 3  
Printed by:  
\\ACER-2\Canon Bubble-Jet S4500  
From  
ACER-2 on 13/11/2006  
Copyright ArchaeoPhysica Ltd 2006