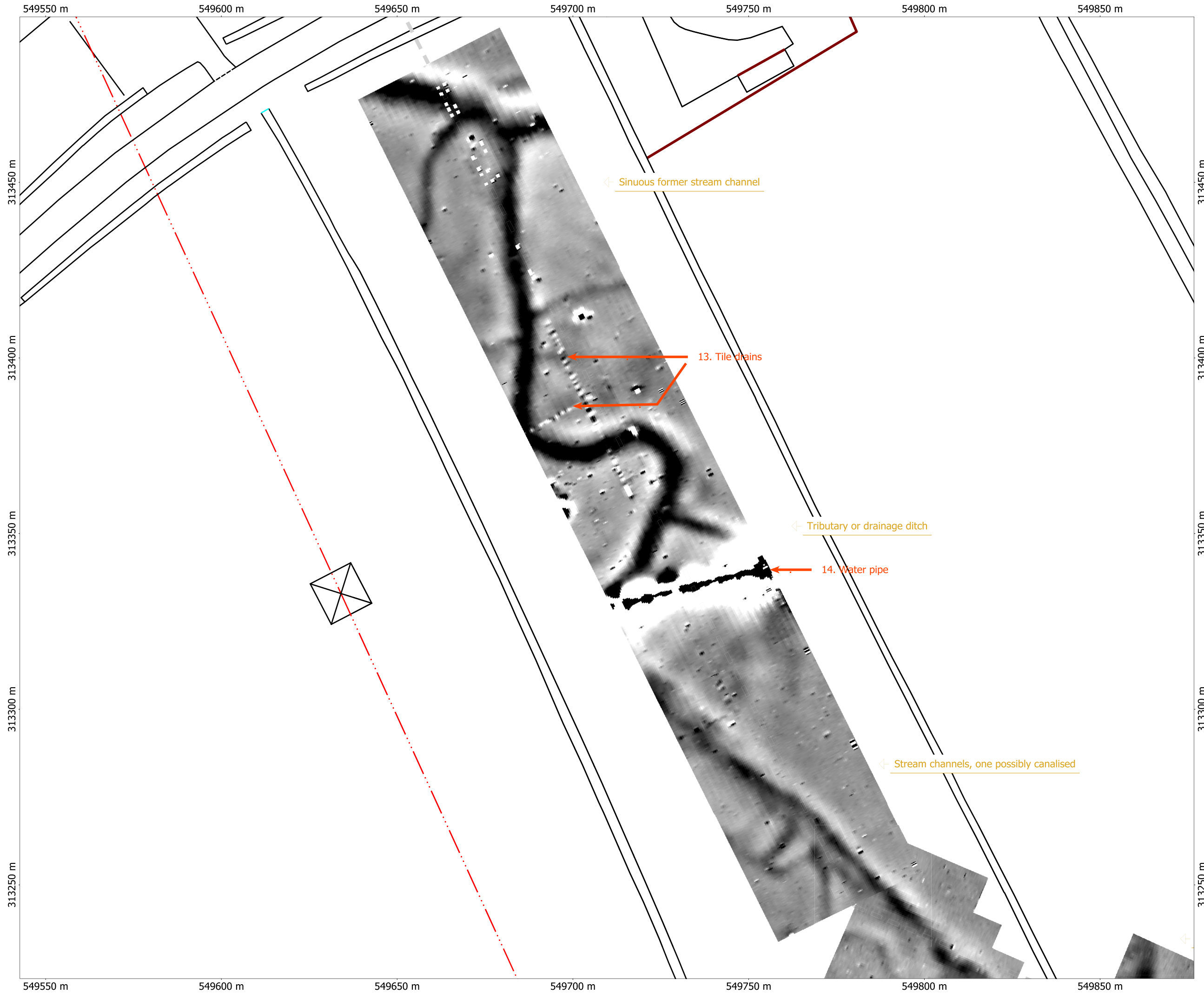


Project Name:
Kings Lynn to Wisbech Pipeline
Project Code:
KLW061
Client:
Network Archaeology



Pseudogradiation data
White -5 nT/m: Black +5 nT/m

DWG 22



ArchaeoPhysica Ltd

Orthographic
Centre X: 549709.70 m
Centre Y: 313360.22 m

Scale: 1:1000 @ A3
Spatial Units: Meter

File: KLW GIS 3
Printed by:
\\ACER-2\Canon Bubble-Jet S4500
From
ACER-2 on 13/11/2006

Copyright ArchaeoPhysica Ltd 2006