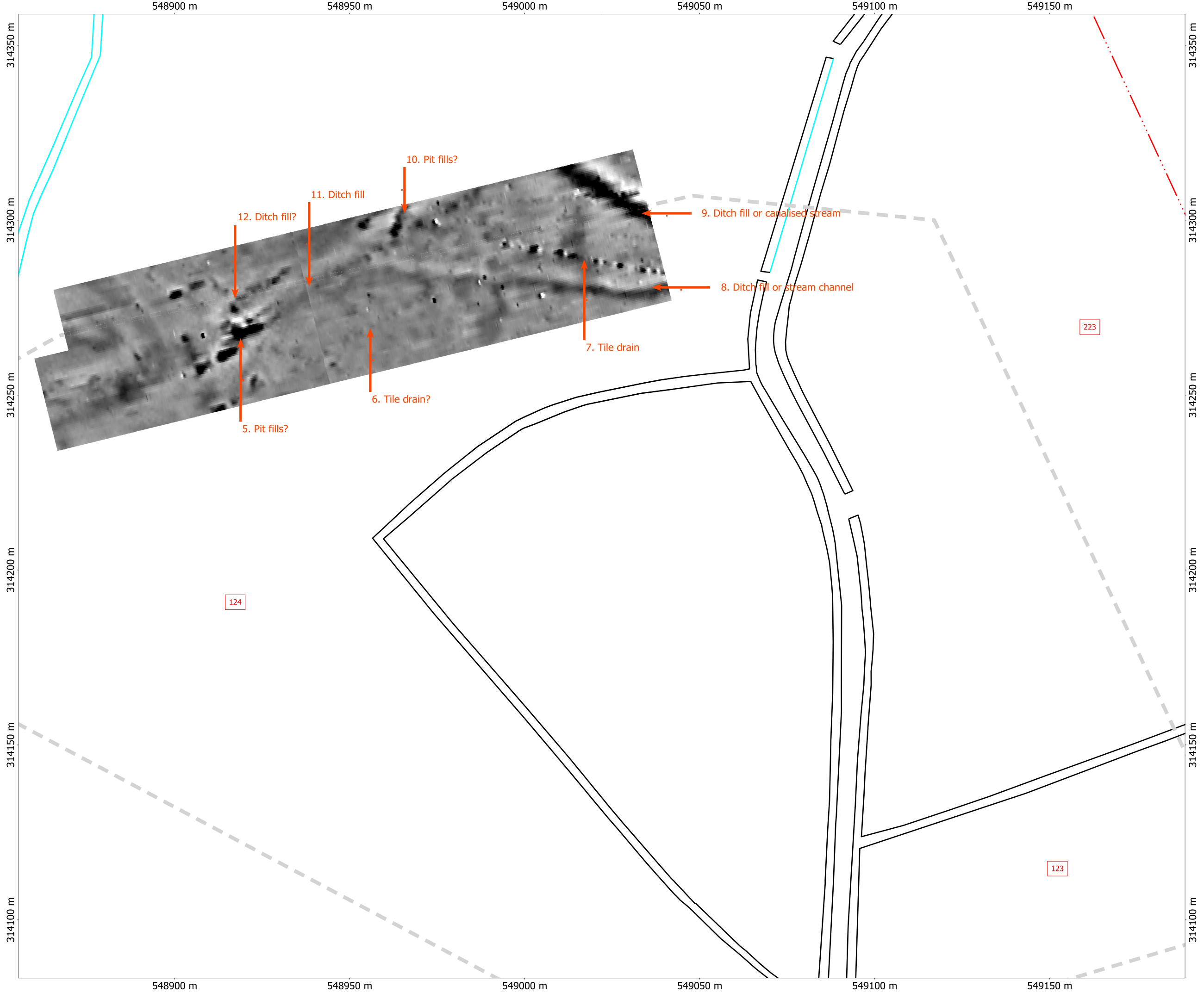


Project Name:
Kings Lynn to Wisbech Pipeline
Project Code:
KLW061
Client:
Network Archaeology



Pseudogradient data
White -5 nT/m: Black +5 nT/m
DWG 23



ArchaeoPhysica Ltd

Orthographic
Centre X: 549022.02 m
Centre Y: 314221.14 m

Scale: 1:1000 @ A3
Spatial Units: Meter

File: KLW GIS 3
Printed by:
\\ACER-2\Canon Bubble-Jet S4500
From
ACER-2 on 13/11/2006

Copyright ArchaeoPhysica Ltd 2006