

# PLATES



Plate 1

Plot 3-5: Excavated kiln from which part of a Roman glass bangle was recovered



Plate 2

Plot 3-5: Excavated section through bank





Plate 3: Plot 6-7: The remains of the northern brick clamp represented by five rows of fired red bricks

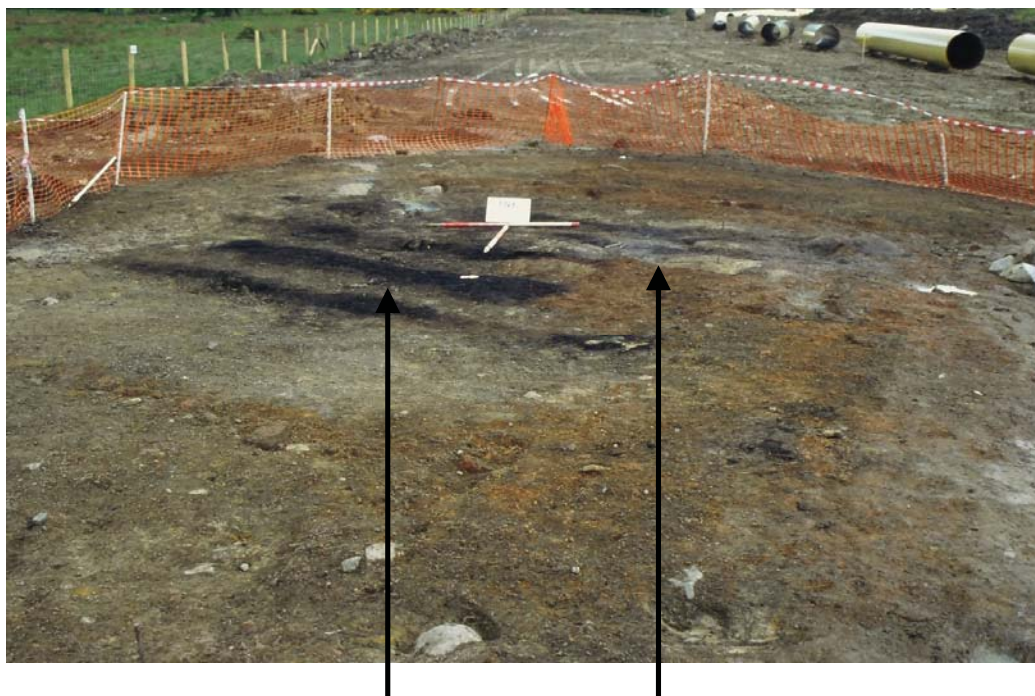


Plate 4  
Plot 6-7: Rows of burnt deposits between the fired red brick walls of the southern brick clamp





Plate 5

Plot 7-18: Floor and wall of the medieval remains in the foreground

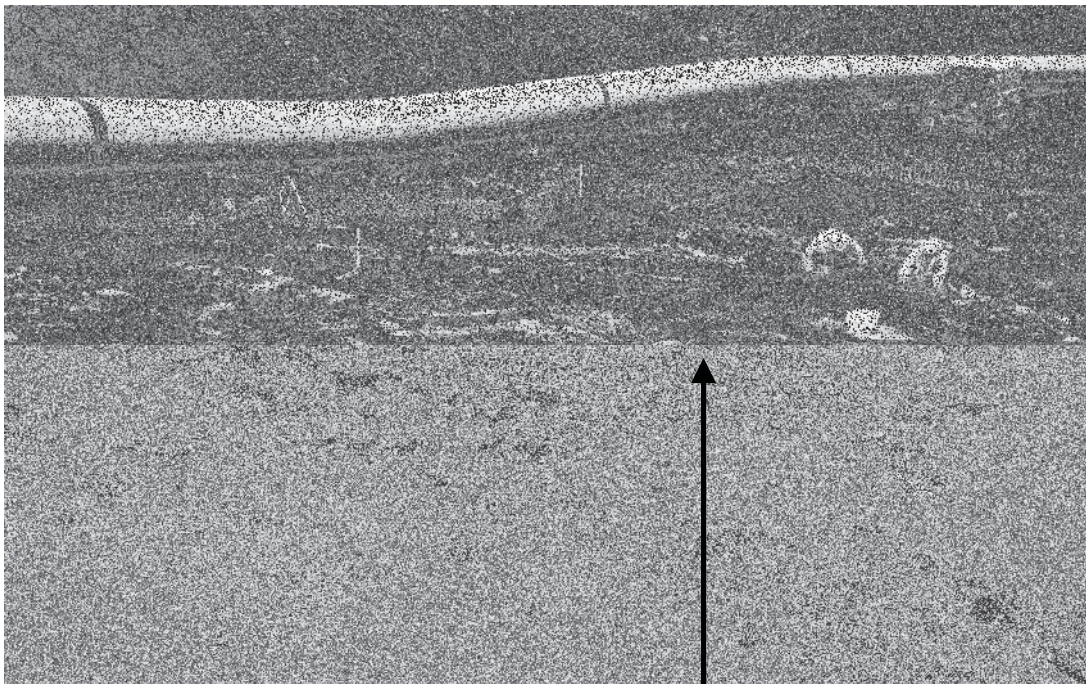


Plate 6

Plot 7-18: North-west corner of the building showing surface [13110] and pit [13080]



Plate 7  
Plot 7-18: Early fork

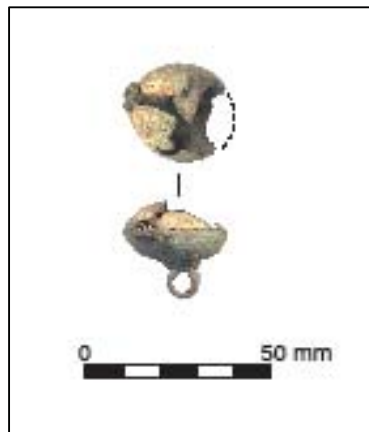


Plate 8  
Plot 7-18: Northamptonshire Militia button





Plate 9  
Plot 7-18: North side of the building after removal of  
floor surface [13024]



Plate 10  
Plot 7-18: The eastern wall [13013], constructed with re-used stone [13031]





Plate 11  
Plot 7-18: Threshold stone [13031] reused as part of the base of the eastern wall



Plate 12  
Plot 7-18: Drain [13004] and floor surface [13008]





Plate 13  
Plot 7-18: Excavated kiln section with ashlar masonry visible at the base



Plate 14  
Plot 8-5: Metal working site





Plate 15: Plot 8-5: The furnace



Plate 16  
Plot 8-5: Extent of the furnace tap and flue





Plate 17: Plot 11-6: Ditch [5123] appearing as a slight earthwork in the field beyond the working width of the pipeline



Plate 18: Plot 11-6: Excavated section through stone-filled ditch [5123]



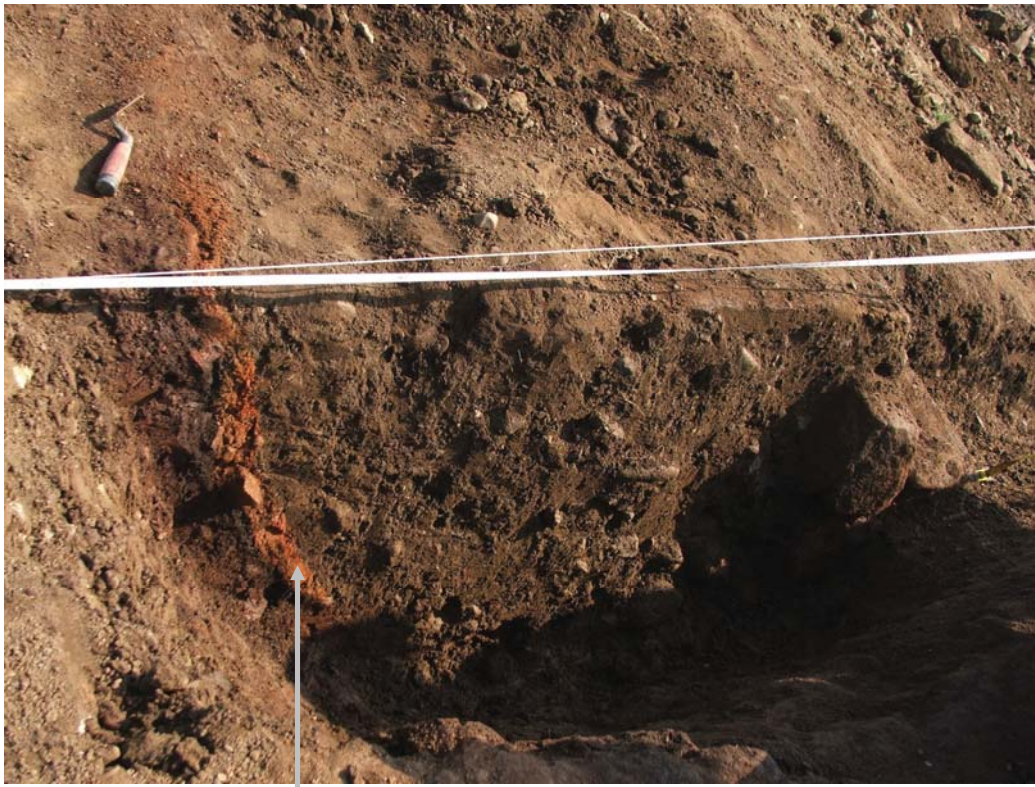


Plate 19: Plot 12-4: Burnt clay lining from secondary firing of field kiln



Plate 20: Plot 13-9: Final recording of the stone building as the pipeline groundworks approach the site





Plate 21: Plot 13-19: Extent of the stone building, with a relatively complete cross passage



Plate 22  
Plot 13-19: Cross passage situated perpendicular to stone-lined ditch





Plate 23: Plot 13-19: Stone surface adjacent to carved stone socket for upright beam

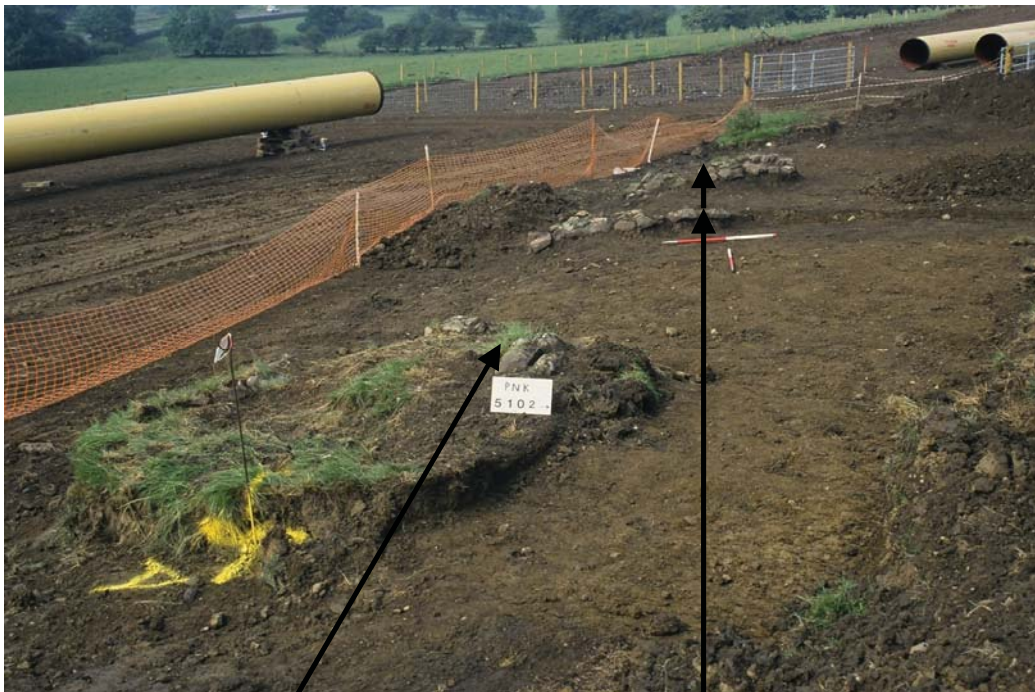


Plate 24  
Plot 14-1: Stone-lined features





Plate 25: Plot 14-1: Shallow stone-lined pit, interpreted as a recent garden feature



Plate 26: Plot 15-1: General view of the site at the beginning of excavation





Plate 27: Plot 15-1: The kiln

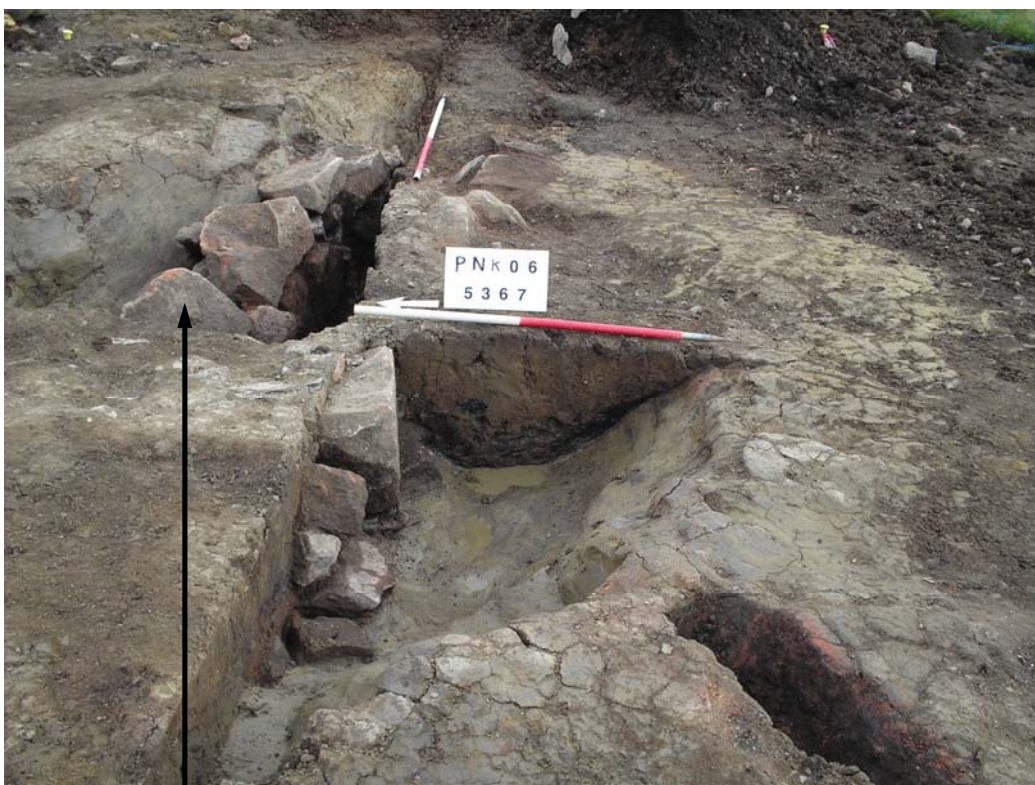


Plate 28  
Plot 15-8: Stone feathering observed within kiln



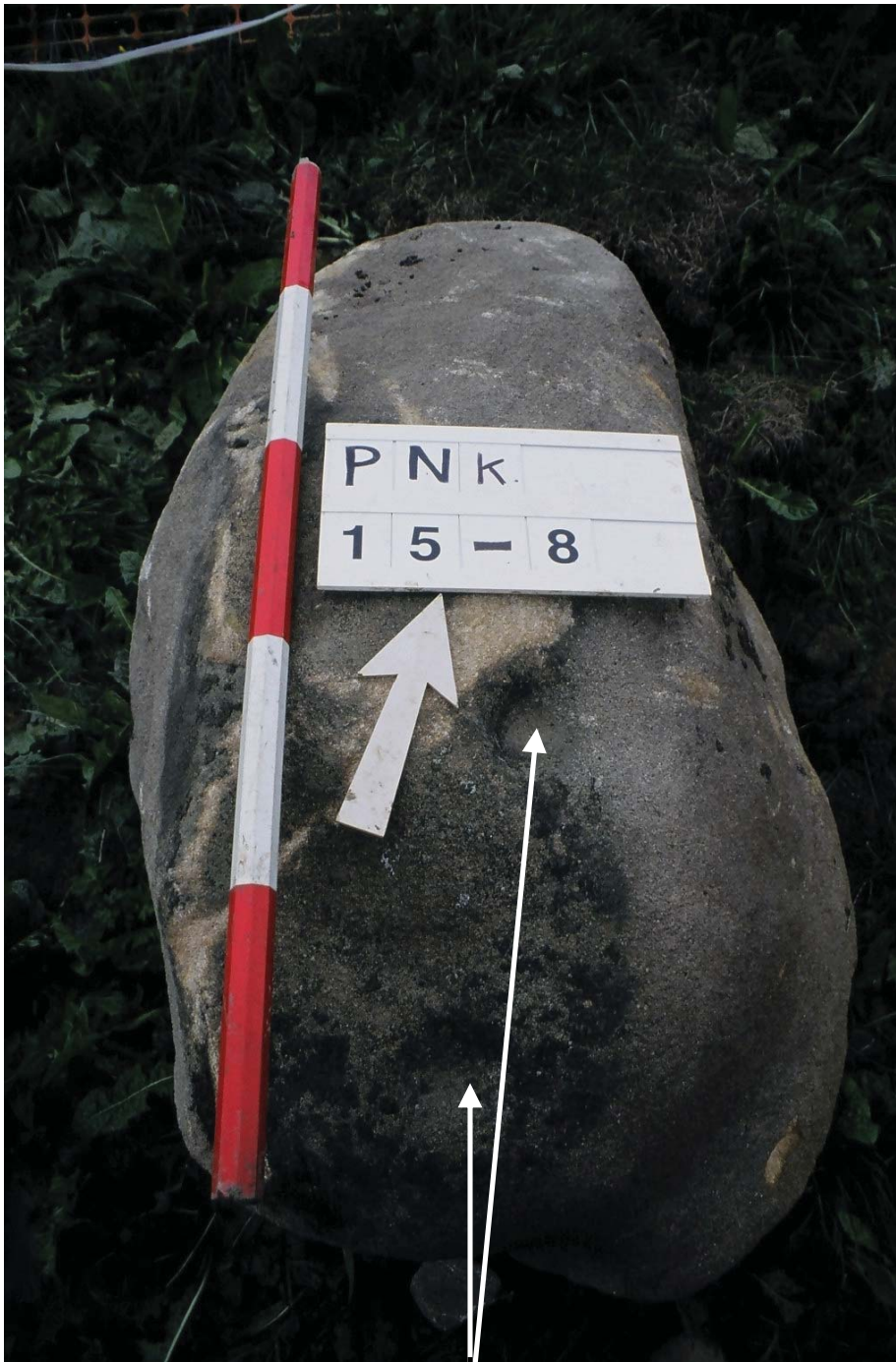


Plate 29

Plot 15-8: Prehistoric rock art, cup marks on boulder



Plate 30: Plot 19-1: General view of the site before the start of excavation



Plate 31

Plot 19-1: The horseshoe-shaped structure before excavation





Plate 32: Plot 19-1: Excavation of horseshoe-shaped structure



Plate 33  
Plot 21-10: General view of the site, showing the topography of the wider landscape



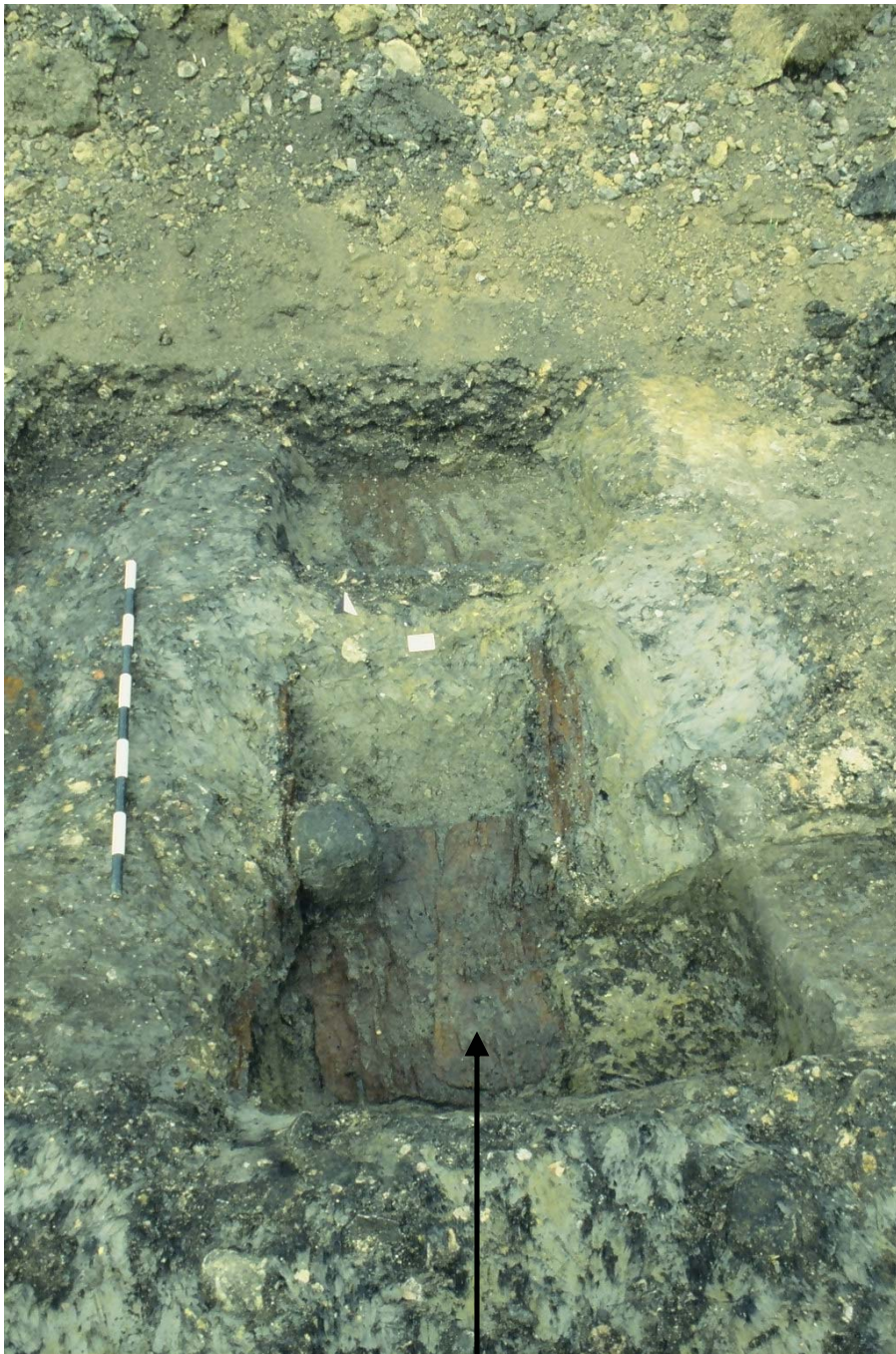


Plate 34

Plot 21-10: Remains of a wooden trough in the base of the pit below the burnt mound





Plate 35: Plot 21-18: The possible ring cairn during excavation



Plate 36:  
Plot 21-18: Kerbing in main cairn wall





Plate 37: Plot 21-18: The outer kerbing, [10109], revealed after the removal of the rubble spread



Plate 38: Plot 21-18: The central structure of the stone ring, with the outer kerbing beyond





Plate 39

Plot 21-18: the ring cairn, with buried soil in its centre



Plate 40

Plot 21-18: Bone ring from layer (10219)

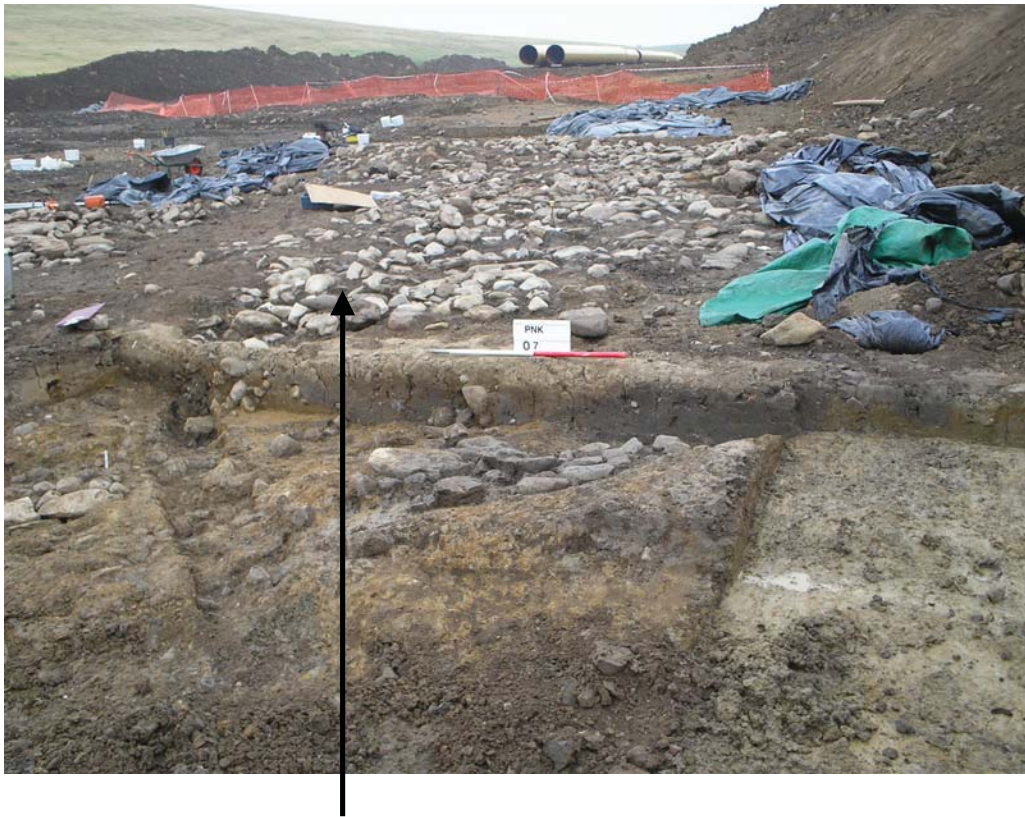


Plate 41  
Plot 21-18: Possible house platform



Plate 42  
Plot 21-18: Three possible house platforms





Plate 43

Plot 21-18: Polished quern fragment, special find no. 473



Plate 44

Plot 21-18: Quern stone fragment, special find no. 474





Plate 45: Plot 21-18: Polished quern stone fragment, special find 479



Plate 46: Plot 21-18: Quern stone fragment, special find no. 480



Plate 47

Plot 21-18: Quern stone fragment, special find no. 483





Plate 48

Plot 21-18: Quern stone fragment, special find 484



Plate 49

Plot 21-18: Quern stone fragment, special find 485





Plate 50

Plot 21-18: Quern stone fragment, special find no. 486



Plate 51

Plot 21-18: The circular millstone (with plugged hole) incorporated into floor surface





Plate 52

Plot 21-18: The large millstone with the stone plug removed



Plate 53  
Plot 28-1: General view of the site during excavation



Plate 54  
Plot 28-1: Stone-lined tank





Plate 55

Plot 28-1: Natural hollow filled with a stone spread overlying redeposited drift geology



Plate 56

Plot 31-2: Underlying geology



Plate 57

Plot 34-5: General view of the extent of the excavated stone building



Plate 58

Plot 34-5: Stone-lined trough on exterior of the building





Plate 59

Plot 34-5: Flagstone flooring within building, with remains of a cobbled surface



Plate 60

Plot 34-5: Excavation in progress, revealing stone walls and surfaces





Plate 61: Plot 35-8: The modern burnt spread



Plate 62: Plot 35-8: Excavated section through the burnt spread





Plate 63  
Plot 36-3 Excavation of kiln in opposing quarters, with flue to the north-west



Plate 64  
Plot 36-3: Section through kiln pit, showing large limestone block fill





Plate 65

Plot 50-2: Burnt mound pre-excitation shot, showing the close proximity of a natural watercourse



Plate 66

Plot 50-2: Excavation and recording of the burnt mound





Plate 67

Plot 54-2: Group of iron cauldrons located in the boundary ditch, associated with a glass beer bottle (marked with a white arrow)





Plate 68

Plot 56-7: Pre-excavation shot, showing the burnt corona of the kiln pit lining



Plate 69  
Plot 56-7: The kiln during excavation





Plate 70

Plot 56-7: Excavated kiln, displaying the burnt lining of the pit and flue