

Rapid Walkover Survey
Glengoulandie, Perth and Kinross



Section of General Wade's military road at Northern end of site



26th January 2012

Introduction (Illus 1 and 2)

Torso Ltd intend planting forestry on the eastern side of Glengoulandie, the author was commissioned to undertake a rapid walkover survey of the proposed new plantation area to identify any archaeological remains that might need to be protected. The rapid walkover survey was carried out by the author on Thursday 19th January 2012 (Site Code GOU01), weather conditions were overcast with occasional snow showers. The survey was carried out in line with Forestry Commission Scotland guidelines *Forest and Archaeology* (1995) and Scotland's Woodlands and the Historic Environment (2008). The corridor for the Beauldy-Denny power line upgrade runs through the Western side of this site and as a record of its archaeological remains were commissioned on a separate contract to GUARD archaeology by SSEB they do not form part of this study.

Historical Background (Illus 3 to 6)

A brief scan of the available Cartographic evidence indicated that Pont's map 23 of Garry, Tummel and Upper Tay (late 16th century) shows 'Garth castle' which lies at the start of the glen but has nothing marked in the survey area. General Roy's Military Survey of 1747-55 has two settlements 'Kinnaldy' and 'Glentown' marked. Thomson's map of 1832 marks the settlements of 'Glengoulandy' and 'Tychurrair' and by the First Edition Ordnance Survey of 1862 'Glengoulandie' is the only settlement marked.

Rapid Walkover Survey

Following a study of the Perth and Kinross Sites and Monuments Record (SMR) and the National Monuments Record (NMR) a total of eight recorded sites within the bounds of the proposed forestry area were noted (MPK576, MPK16666, MPRK16670, MPK16671, MPK16672, MPK16673, MPK17870 and MPK1803). The author visited each of the locations marked on the maps and also walked the track from beside Creag Odhar around past Sliabh Fada, Creag Chean and Meall Dubh Mor and then back down into the glen, the line of Wade's military road was then followed to its Northern limit in the proposed forestry area.

In the following gazetteer the SMR / NMR entries are listed and accompanied by a short report of how these features survive on the ground. Any features not recorded in the SMR or NMR are also logged and final recommendations made for mitigation in advance of planting.

Site Gazetteer

Site Number MPK576 (NN75SE 4)

Site Name Cnoc Dubh (Illus 7)

Site Type Cairn?

Description

At NN 7719 5329 on a low ridge, is a turf-covered mound c 18.5m in diameter and 0.6m high. The interior has been slightly hollowed out. A later field bank crosses the mutilated southern arc and a small quarry scoop occurs immediately outside the South Western arc. There are no stones visible but it is probably the remains of a cairn.

Walkover Record

This feature is still visible and has changed little from the above description in the Sites and Monuments Record.

Site Number MPK16666 (NN75SE 31)

Site Name Garth Castle (Illus 8 and 9)

Site Type Field System

Description

Centred at NN 7747 5032 is a large field system divided by dykes and head dykes.

Walkover record

The largest part of this well preserved field system lies across the stone field boundary which forms the Southern limit of the proposed forestry area, however elements of it are visible extending slightly into the site area. This includes a potential head dyke which bounds the track on its South side.

Site Number MPK 16670 (NN75SE 32)

Site Name Creag Odhar

Site Type Hut Circle? (Illus 10)

Description

Possible hut circle spotted on RCAHMS air photograph, other interpretations might be as a sheep fank, while faint traces of other circular features might suggest a row of bell pits forming a strip mine.

Walkover Record (Illus 11)

The author could find no trace of this feature at the grid reference given in the SMR, careful examination of the surrounding area indicated the presence of several water filled hollows which, depending on ground conditions, could resemble hut circles or other features on aerial photographs. However careful study of a recent aerial photograph supplied by Bowlts did locate a feature matching this description further to the NE of this location (NN718 514) (Illus 11).

Site Number MPK 16671 (NN75SE 33)

Site Name Creag Odhar

Site Type Field Boundary (Undated) (Illus 12)

Description

Aside from the basic descriptions above no further details are given for this feature.

Walkover Record

On the ground a low bank is visible running NW from the side of the track towards a small group of structures just at the foot of the hill slope (Illus 12).

Site Number MPK 16672 (NN75SE 34)

Site Name Creag Odhar (Illus 13 and 14)

Site Type Shieling Huts and Rig and Furrow

Description

A group of shieling huts and a large patch of plough rig occupy the area between the two water courses near Creag Odhar. Spotted during RCAHMS airphoto sortie.

Walkover Record

A group of seven structures are visible on the ground the largest of which has a diameter of 5.60m and an entrance on its NE side defined by large stones, the upstanding wall foundation stands to 0.60m in height. The other six structures vary in diameter between 2.40 and 3.20m with wall foundations standing to 0.30m in height. The plough rig visible on the aerial photograph is not very visible on the ground.

Site Number MPK16673 (NN75SE 35)

Site Name Creag Odhar

Site Type Shielings (Illus 15)

Description

A group of sheilings occupies ground near a watercourse in the vicinity of Creag Odhar, visible on aerial photography from RCAHMS.

Walkover Record

A group of four structures are visible on the ground the largest of which has a diameter of 6.40m with a wall foundation standing to a height of 0.30m. The remaining structures have diameters of 3.20m, 2.40m and 3.20m respectively and wall foundations standing to 0.30m.

Site Number MPK17870 (NN75SE 21)

Site Name Glengoulandie to White Bridge; Military Road

Site Type Military Road (Illus 16)

Description

Upstanding remains of the military road begin on the northern side of a modern drystone dyke and follow the contours of the land. The road is flanked by substantial earth and stone banks on either side. After a short distance the eastern bank becomes less well defined as the road is incorporated into the modern farm track before rejoining the modern road.

Walkover Record

This particular stretch of the military road is very well defined and has changed little from the description above.

Site Number MPK18034 (NN75SE 46)

Site Name Glen Goulandie

Site Type Cup marked stone (see Appendix 1 map 3 for site location)

Description

350m E of Glen Goulandie Farm in unimproved pasture at 330m OD an outcrop bears 18 marks.

Walkover Record

From conversations with the onsite SSEB consultant this cup marked stone was supposed to lie in the corridor of the Beauly – Denny power line upgrade, the archaeological contractor employed by SSEB was not able to find it at the location stated in the SMR/NMR.

Features not recorded in either PKHT SMR or NMR

Apart from the items listed above the author also recorded the presence of the following features.

NN 789 514 (Illus 11)

In the aerial photograph supplied by Bowlts a linear feature is visible running NW towards the course of the track below Creag Odhar, this is probably a former field boundary.

NN 793 519 (Illus 17)

A built stone structure standing 1.30m high with a length of 2.30m was recorded lying beside the track. This is probably a grouse butt.

NN 773 529 to NN 778 529 (Illus 18 and 19)

A line of thirteen identically built subcircular structures were located on the Western slopes of Meall Dubh Mhor straddling the burn that runs down into the glen. These structures were consistently 3.2m in diameter and 1.70m high and built of coursed drystone walls covered in turf. These features are marked on the OS map as 'Grouse butts'.

Centred at NN 772 532 (Illus 20)

A series of turf and stone banks are visible to the East of the military road these are former field boundaries and one of them crosses the possible cairn MPK576 (see above).

Recommendations

From the rapid walkover survey of the proposed forestry area there are eight monuments present that the author considers worthy of exclusion from any planting, six of these are listed in the local SMR and the NMR and the other two are visible on the aerial photograph supplied by Bowlts (see Appendix 1). The line of thirteen grouse butts may also be considered for protection although they are probably of an early modern date, it is worth noting that they are not marked on the First Edition Ordnance Survey map of 1862. The vast percentage of the proposed plantation area lies above the 350m OD contour and there is no sign of any human settlement above that level (Illus 21). However the final decision on these recommendations rests with Perth and Kinross Heritage Trust.

References

Cartographic Sources

Pont's map of Garry, Tummel and Upper Tay (<http://www.nls.uk/pont/specialist/pont23.html>)

Roy Military Survey of Scotland, 1747-55 (<http://maps.nls.uk/roy/index.html>)

John Thomson's atlas of Scotland 1832; Perthshire with Clackmannan (<http://maps.nls.uk/atlas/thomson>)

First edition Six Inch Ordnance Survey map 1843-1882 (<http://www.nls.uk/maps/os/6inch/>)

Acknowledgements

The author would like to thank John Culpin of Murphy Construction (Beaully-Denny) for allowing access for this walkover and Sarah Malone of Perth and Kinross Heritage Trust for supplying the maps and information from the Sites and Monuments Record.

Illustration List

Illus 1 location of proposed forestry area (based on Ordnance Survey map Crown Copyright 2012. All Rights Reserved. Licence number 100049628)

Illus 2 Proposed forestry plantation, Glengoulandie, Perth and Kinross (map supplied by Bowlts)

Illus 3 Ponts map of Garry, Tummel and Upper Tay showing Garth Castle (© Trustees of National Library of Scotland)

Illus 4 Roy map 1747-1755 showing settlements of 'Kinaldy' and 'Glentown' (© Trustees of National Library of Scotland)

Illus 5 John Thomson's map of 1832 showing settlements of 'Glengoulandie', 'Tychurrair' and 'Kinaldy' (© Trustees of National Library of Scotland)

Illus 6 1st Edition Ordnance Survey map of 1862 showing plantation area (© Trustees of National Library of Scotland)

Illus 7 MPK576 Cnoc Dubh looking North West

Illus 8 MPK16666 Garth Castle field system as visible beyond boundary wall

Illus 9 MPK 16666 Part of field system visible within plantation area

Illus 10 MPK 16670 Location of possible 'hut circles' showing water filled hollows

Illus 11 hut circle and possible field boundary as visible on recent aerial photograph supplied by Bowlts

Illus 12 MPK16671 field boundary and structures on Bowlts aerial photograph

Illus 13 MPK16672 Group of shieling huts looking North West towards Schiehallion

Illus 14 MPK 16672 Largest shieling hut with stones either side of entrance

Illus 15 MPK 16673 Largest shieling hut Schiehallion visible in background

Illus 16 MPK 17870 section of military road looking North East

Illus 17 Stone built grouse butt

Illus 18 Grouse Butt visible on slope of Meall Dubh Mhor (one of line of thirteen), next one in line circled in red

Illus 19 Line of thirteen grouse butts as visible on Bowlts aerial photograph

Illus 20 Part of field system to East of military road

Illus 21 General view of proposed plantation area at 494m OD looking West

Illus 22 PKHT sites and monuments record map showing location of recorded monuments considered worthy of exclusion from plantation area

Appendix 1

Maps from PKHT SMR showing location of monuments considered worthy of protection

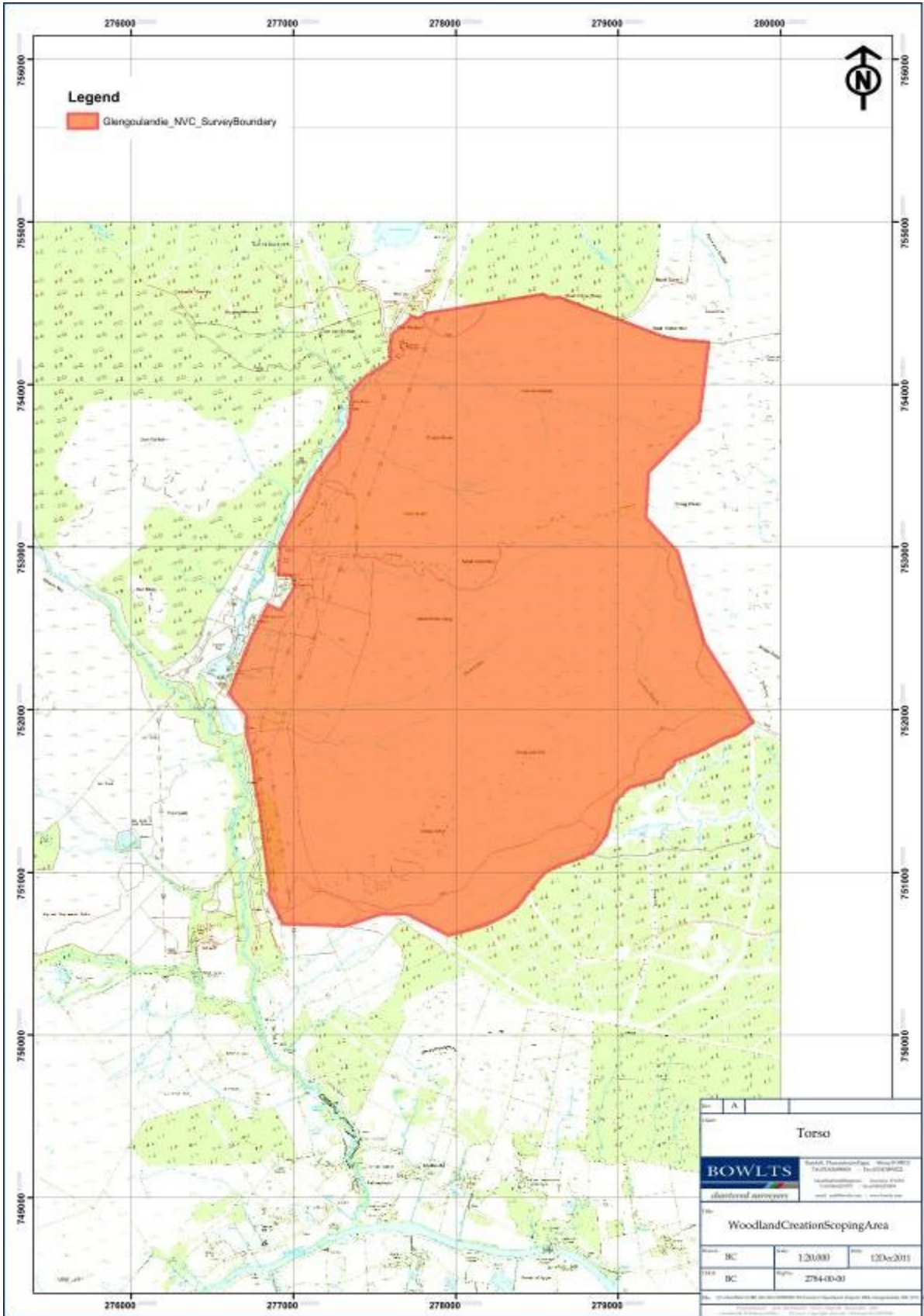
1. Map from Perth and Kinross Sites and Monuments Record showing line of General Wade's Military road (MPK 17870) and location of Cnoc Dubh (MPK576)
2. Map from Perth and Kinross Sites and Monuments Record showing recorded location of possible hut circle (MPK16670) which was not visible on the ground, a red dot indicating the hut circle visible on the aerial photograph and a field boundary (MPK16671)
3. Map from Perth and Kinross Sites and Monuments Record showing location of cup marked rock (MPK18034) on line of Beaully-Denny upgrade, sheilings (MPK16673) and sheilings and rig (MPK16672)
4. Map from Perth and Kinross Sites and Monuments Record showing Northern limit of field system (MPK16666) extending into plantation area

Discovery & Excavation in Scotland Entry

| | |
|--|--|
| LOCAL AUTHORITY: | Perth and Kinross |
| PROJECT TITLE/SITE NAME: | Glengoulandie forestry |
| PROJECT CODE: | GOU01 |
| PARISH: | Dull |
| NAME OF CONTRIBUTOR(S): | Derek Hall |
| NAME OF ORGANISATION: | Derek Hall, archaeologist and ceramic specialist |
| TYPE(S) OF PROJECT: | Rapid Walkover Pre-forestry Survey |
| NMRS NO(S): | None |
| SITE/MONUMENT TYPE(S): | Military road, sheilings, cairn, field system and grouse butts |
| SIGNIFICANT FINDS: | None |
| NGR (2 letters, 6 figures) | Site centred on NN 780 526 |
| START DATE | 18 th January 2012 |
| END DATE | 18 th January 2012 |
| PREVIOUS WORK (incl. <i>DES</i> ref.) | None |
| MAIN (NARRATIVE) DESCRIPTION: (May include information from other fields) | A rapid walkover survey was carried out in advance of a proposed forestry plantation. Features and monuments recorded in both the NMR and local SMR were checked on the ground and recommendations made for those that should be excluded from the plantation. A line of thirteen stone and turf built grouse butts were recorded on the slopes of Meall Dubh Mor. |
| PROPOSED FUTURE WORK: | None |
| SPONSOR OR FUNDING BODY: | Torso Ltd |
| CAPTIONS FOR ILLUSTRS | N/A |
| ADDRESS OF MAIN CONTRIBUTOR: | 34 Glenfarg Terrace, Perth, PH2 0AP |
| ARCHIVE LOCATION (intended) | NMRS |
| EMAIL ADDRESS: | Derek.hall1@blueyonder.co.uk |



Illus 1 location of proposed forestry area (based on Ordnance Survey map Crown Copyright 2012. All Rights Reserved. Licence number 100049628)



Illus 2 Proposed forestry plantation, Glengoulandie, Perth and Kinross



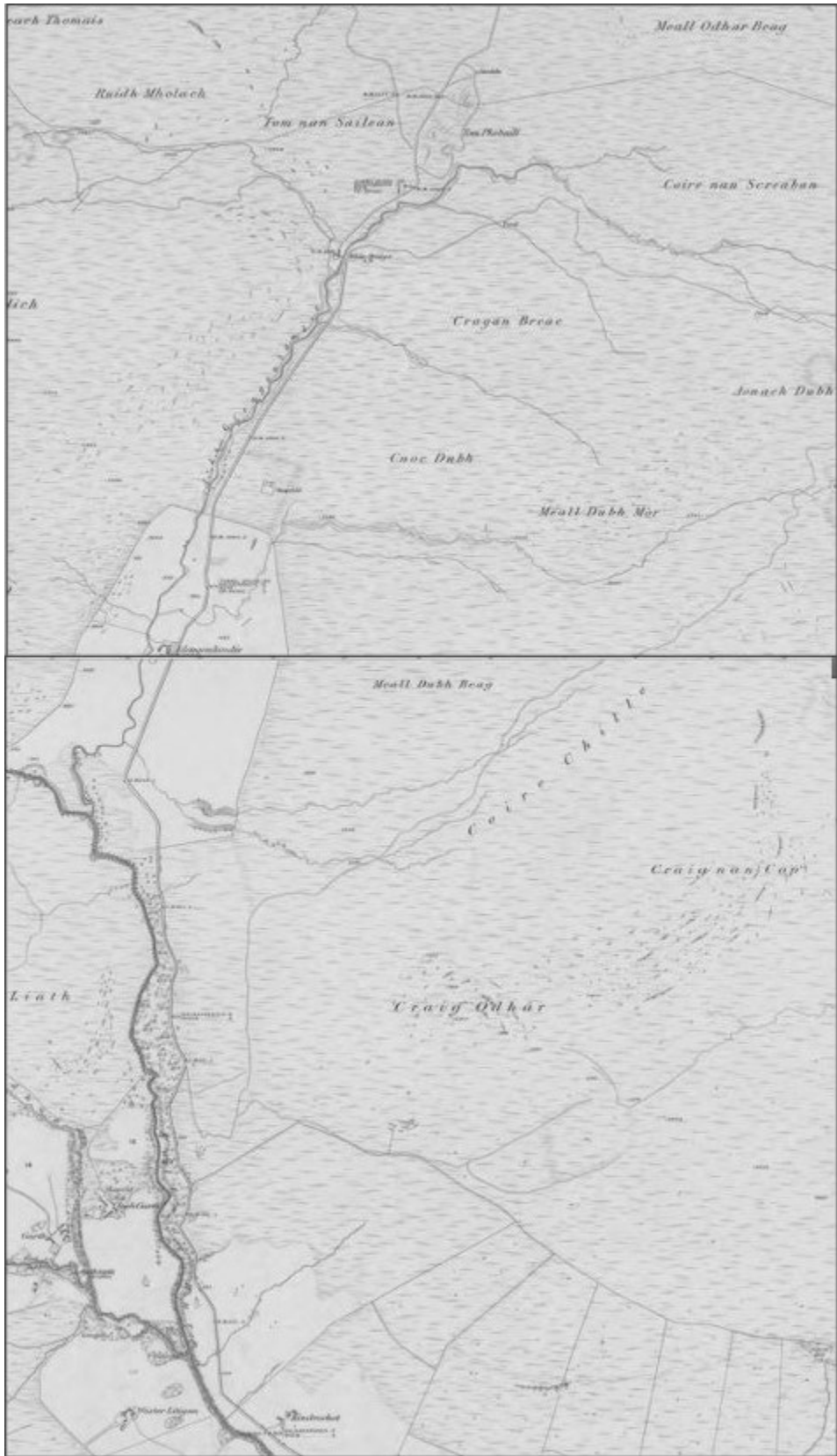
Illus 3 Pont's map of Garry, Tummel and Upper Tay showing Garth Castle (© Trustees of National Library of Scotland)



Illus 4 Roy map 1747-1755 showing settlements of 'Kinaldy' and 'Glentown' (© Trustees of National Library of Scotland)



Illus 5 John Thomson's map of 1832 showing settlements of 'Glengoulindy', 'Tychurrair' and 'Kinaldy' (© Trustees of National Library of Scotland)



Illus 6 1st Edition Ordnance Survey map of 1862 showing plantation area (© Trustees of National Library of Scotland)



Illus 7 MPK 576 Cnoc Dubh looking North West



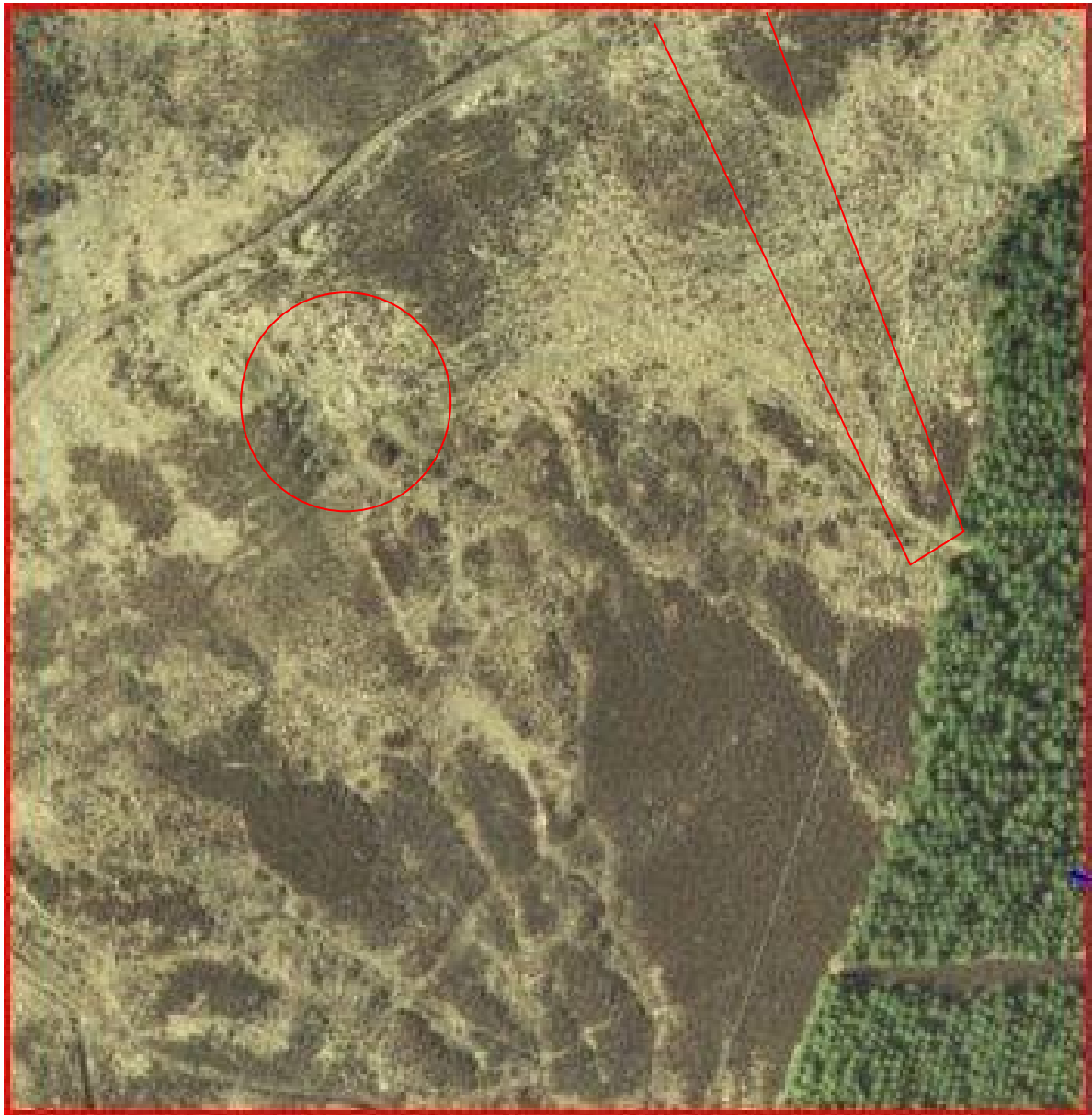
Illus 8 MPK16666 Garth Castle field system as visible beyond boundary wall



Illus 9 MPK16666 Part of field system visible within plantation area



Illus 10 MPK16670 Location of possible 'hut circles' showing water filled hollows



Illus 11 Hut circle and possible field boundary as visible on recent aerial photograph supplied by Bowlts



Illus 12 MPK16671 Field boundary and structures on Bowlts aerial photograph



Illus 13 MPK16672 Group of sheiling huts looking North West towards Schiehallion



Illus 14 MPK16672 Largest shieling hut visible with stones either side of entrance



Illus 15 MPK16673 Largest Sheiling hut, Schiehallion visible in background



Illus 16 MPK17870 section of military road looking North East



Illus 17 Stone built grouse butt at NN 793 519



Illus 18 Grouse Butt visible on slope of Meall Dubh Mhor (one of line of thirteen), next one in line to East circled in red



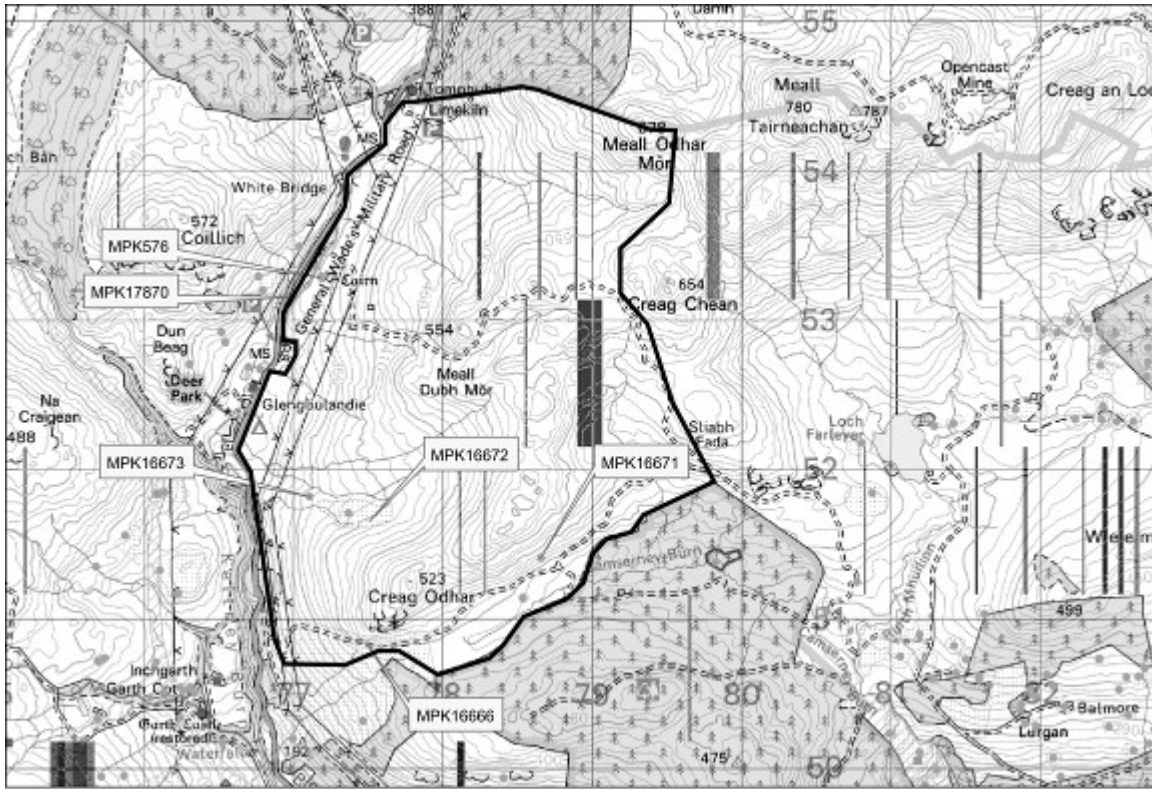
Illus 19 Line of 13 grouse butts as visible on Bowlts aerial photograph



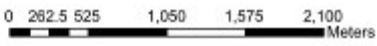
Illus 20 Part of field system to East of military road



Illus 21 General view of proposed plantation area at 494m OD looking West



Reproduced by permission of Ordnance Survey on behalf of HMSO
 © Crown copyright and database right (2011).
 All rights reserved. Ordnance Survey Licence number 100016971. (2011)



Illus 22 PKHT sites and monuments record showing location of recorded monuments considered worthy of exclusion from plantation area

Appendix 1 (Detailed maps of recorded sites worthy of exclusion from plantation)

SMR/NMR numbers of relevant sites (see Illus 22)

MPK576 (NN75SE 4) Cnoc Dubh cairn

MPK17870 (NN75SE 21) Military road

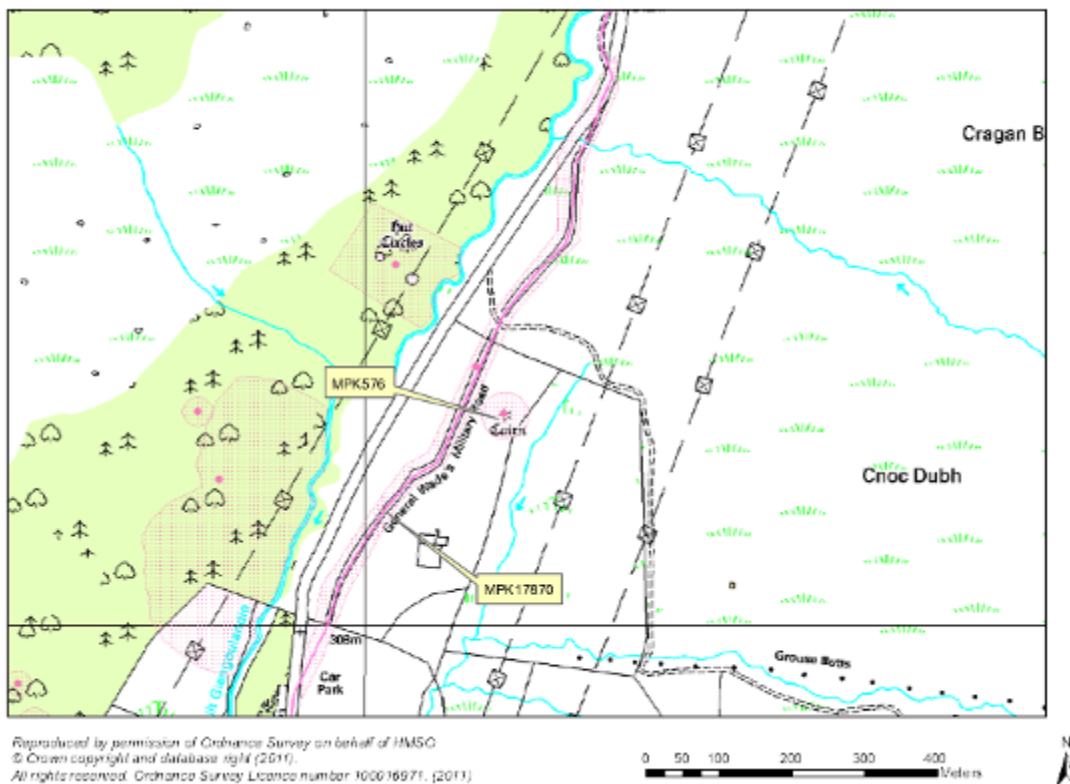
MPK 16671 (NN75SE 33) field boundary

NN718 514 hut circle and field boundary visible on aerial photograph

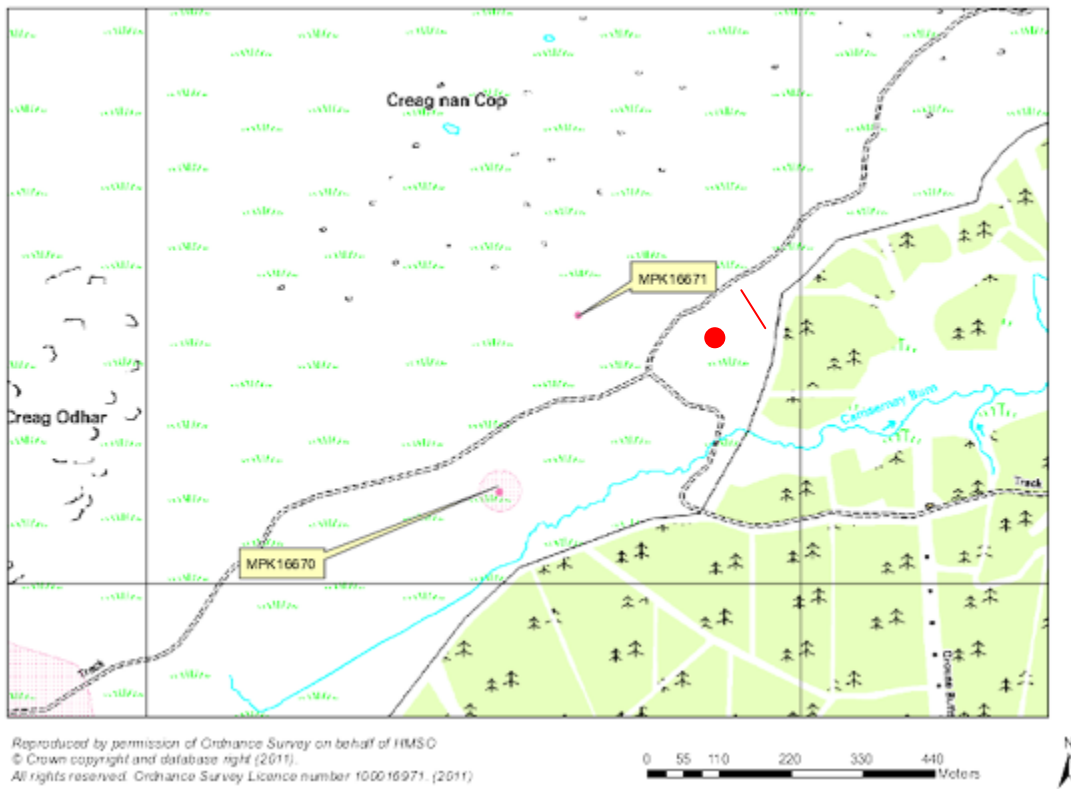
MPK 16672 (NN75SE 34) Shieling huts

MPK16673 (NN75SE 35) Shieling huts and rig

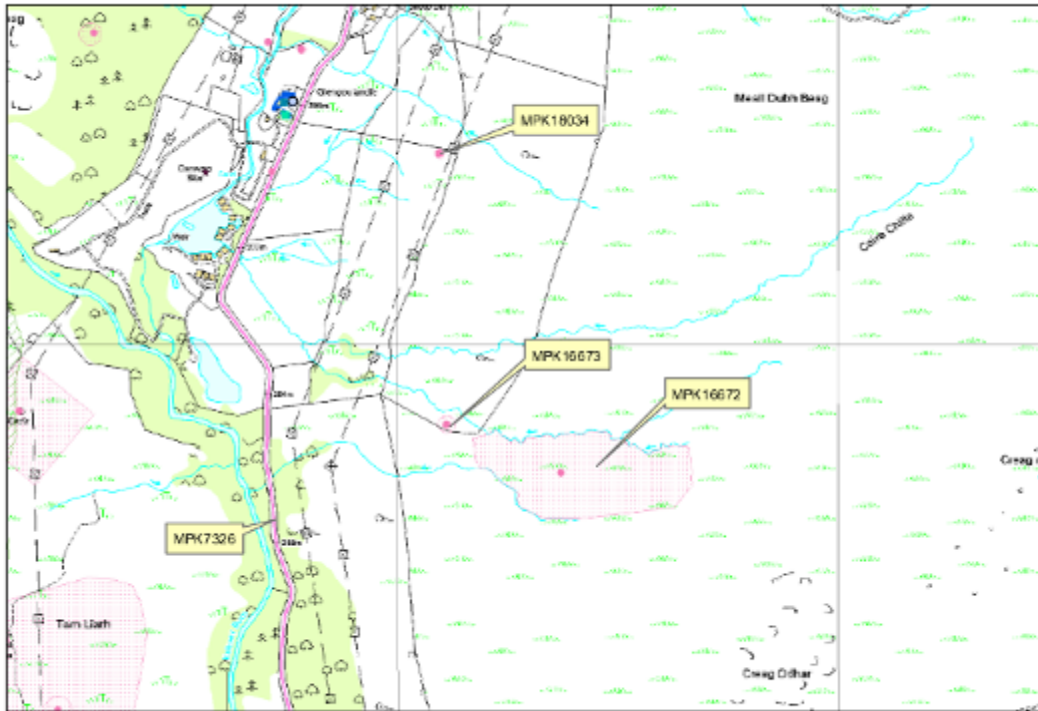
MPK16666 (NN75SE 31) Field system



1. Map from Perth and Kinross Sites and Monuments Record showing line of General Wade's Military road (MPK 17870) and location of Cnoc Dubh (MPK576)



- Map from Perth and Kinross Sites and Monuments Record showing recorded location of possible hut circle (MPK16670) which was not visible on the ground, a red dot indicating the hut circle and a red line indicating the field boundary visible on the aerial photograph and the field boundary recorded in the SMR (MPK16671)



Reproduced by permission of Ordnance Survey on behalf of HMSO
© Crown copyright and database right (2011).
All rights reserved. Ordnance Survey Licence number 100016971. (2011)

0 80 160 320 480 640 Meters



3. Map from Perth and Kinross Sites and Monuments Record showing location of cup marked rock (MPK18034) on line of Beaulieu-Denny upgrade, sheilings (MPK16673) and sheilings and rig (MPK16672)



Reproduced by permission of Ordnance Survey on behalf of HMSO
© Crown copyright and database right (2011).
All rights reserved. Ordnance Survey Licence number 100016971. (2011)

0 62.5 125 250 375 500
Meters



4. Map from Perth and Kinross Sites and Monuments Record showing Northern limit of field system (MPK16666) extending into plantation area