

Standing Building Survey

The Smithy, Cargill, Perth and Kinross



Sign at entrance to The Smithy, Cargill



9th February 2012

Introduction

The planning consent for this development (Perth and Kinross Council Planning Application 08/0084/FUL dated 1st December 2008) included an archaeological condition specifying the need an evaluation of the site of the proposed new house and associated heating and a standing building record of 'The Smithy'. The site evaluation was carried out by the author on 23rd April 2010 and the report submitted to Perth and Kinross Heritage Trust (Hall 2010). This standing building survey was carried out by the author on Monday 6th February 2012 (Site Code CAR02), weather conditions were bright, cold and sunny.

Historical Background (Illus 1 and 2)

The smithy at Cargill is a rare surviving example of a rural industrial building in a Scottish context (Hume 1977) and is dated to the 19th century. Limited cartographic analysis by the author has indicated that it is first visible on the 1st Edition Ordnance Survey map of 1864, earlier maps by Stobie (1783) and Thomson (1832) do not appear to show a building in this location.

Description of building (note that letters in brackets refer to rooms as marked on Illustration 3)

Location

The Smithy stands on the western side of the A93 Perth to Blairgowrie road and has excellent views of the River and the Grampian mountains to the North. The building is a long one storey building aligned NW to SE with extensions to its Eastern and Western ends, the main structure has an attic level.

Eastern extension (A) (Illus 6, 7 and 8)

This is a single storey stone built structure with a pitched corrugated iron roof which butts against the Eastern elevation of the main building.

Eastern Elevation

This is a plain wall face constructed of mortar bonded rough sandstone blocks, schist and a single white quartzite boulder. It contains a large low level window/access point which has been blocked with stone. A section of the SE corner angle of the gable is smoothed off.

Southern Elevation

This elevation is built of mortar bonded sandstone blocks and has traces of white wash, a single wooden framed window with twelve individual glass lights and a blocked doorway.

Northern Elevation

This elevation is built of mortar bonded sandstone blocks and a single white quartz pebble. It contains a blocked window and a doorway with a long wooden lintel and a wooden door containing two glass panels.

Main Smithy building (B and C) (Illus 9 to 14)

Roof

This building has a pitched slate roof that projects out over its Northern and Southern elevation by 0.40m.

Southern Elevation

This elevation is built of mortar bonded red sandstone blocks and has traces of white wash on its face. It contains three wooden framed windows with sixteen individual glass panels in each and a single doorway that has been blocked on the inside by mortar bonded red bricks. There is a butt joint visible in this wall face that suggests that the first phase building only had two windows either side of a doorway.

Northern Elevation

This elevation is built of mortar bonded red sandstone blocks and has traces of white wash on its face. It contains three blocked narrow slit windows, a wooden double doorway and a single doorway with a wooden lintel.

Western Elevation

This elevation has an extension built against it (see below) but where visible contains a square hole or window just below its gable and it has a brick built chimney which is slightly set back from the gable end.

Eastern Elevation

This elevation has an extension built against it (see above) but where visible comprises a blank wall face.

Western Extension (D) (Illus 10)

This small building is constructed of vertical steel sheets coloured blue grey and has a locked double door in its Northern elevation.

Interior rooms

Eastern Extension (Illus 15 and 16)

This room has a concrete floor and in places a beaten earth one, it is partially subdivided by brick walls standing about three feet high and is being used for storage. Its threshold is built of 'WELLWOOD' red bricks (brickworks in Fife).

Main Smithy building

Eastern room (Illus 17)

This has a concrete floor and in places a beaten earth one, in its SE corner there is a small room constructed of wooden panels that reach ceiling level. There is a visible broken attic floor level and a doorway into the western end of the building.

Western room (Illus 18 to 21)

This room has wooden sleepers forming its floor surface up until 2m from its Western wall where the floor becomes concrete. Where it is accessed by the double wooden doors there is a raised concrete platform standing about 10cm above floor level which has a wooden slab surface. This room has a chimney and flue at either end.

Observations (Illustration 3)

The straight joints visible in the Southern elevation of the main Smithy building may suggest that the structure began life as a small single roomed building (C) with a fireplace at either end that was accessed either through a single doorway from the South or a double doorway from the North. The reinforced sleeper floor and elevated platform in C would suggest that heavy equipment was in use at this end of the structure. The slit windows in the Northern elevation were presumably designed to aid ventilation of the smithy forge.

Recommendations

The author feels that the photographic survey and written notes on the building are an adequate record of 'The Smithy' prior to its refurbishment and there would seem to be no need for any further work. However the final decision on that rests with Perth and Kinross Heritage Trust.

References

Cartographic Sources((<http://www.nls.uk/maps>)

Stobie, James 1783 A large scale map of Perth and Clackmannan

Thomson, John 1832 Atlas of Scotland

Ordnance Survey Maps - Six-inch 1st edition, Scotland, 1843-1882

Printed

Hume, J R 1977 The industrial archaeology of Scotland, 2, the Highlands and Islands London

Illustration List

Illustration 1 Site location (red dot) (based on Ordnance Survey map Crown Copyright 2012. All Rights Reserved. Licence number 100049628)

Illustration 2 The Smithy as marked on 1st Edition Ordnance Survey map of 1864 (red arrow) (© Trustees of National Library of Scotland)

Illustration 3 Building as recorded by survey, elevations marked with blocked doorways (red is brick brown is stone) and windows and visible straight joints (amended architects drawing). Light blue indicates a very long wooden lintel. Scale 1:100 at A3

Illustration 4 'The Smithy' looking South East

Illustration 5 'The Smithy' in relation to new house to its South and neighbouring cottages to North

Illustration 6 Eastern elevation of extension (A) showing blocked window/access point with stone lintel to right of scale

Illustration 7 Southern elevation of Eastern extension (A) showing single window and blocked doorway

Illustration 8 Northern elevation of Eastern extension (A) showing blocked window (behind scale) and doorway with long wooden lintel

Illustration 9 Southern elevation of main Smithy building (B and C) showing windows, internally blocked doorway and visible straight butt joint to left of scale

Illustration 10 Western elevation of main Smithy building with extension (D) visible in foreground, small hole/window visible in gable end and brick chimney set back from top of gable

Illustration 11 Northern elevation of main Smithy building (red arrows indicate position of blocked slit windows)

Illustration 12 Blocked slit window at West end of North elevation (1 on Illustration 3)

Illustration 13 Blocked slit window (2 on Illustration 3)

Illustration 14 Blocked slit window in Northern elevation (3 on Illustration 3)

Illustration 15 Interior of Eastern extension (A) showing inside face of blocked window/access point in elevation

Illustration 16 Northern side of interior of Eastern extension (A) showing low subdividing brick wall

Illustration 17 Interior of Eastern room (B) in main Smithy building

Illustration 18 Interior of Western room (C) of main Smithy building

Illustration 19 Interior of Western room (C) showing sleeper floor, raised platform and concrete floor in foreground

Illustration 20 Flue and chimney base at Western end of western room (C) in main Smithy building

Illustration 21 Flue and chimney base in Eastern elevation of Western room (C) of main Smithy building

Discovery & Excavation in Scotland Entry

LOCAL AUTHORITY:	Perth and Kinross
PROJECT TITLE/SITE NAME:	The Smithy, Cargill
PROJECT CODE:	CAR02
PARISH:	Cargill
NAME OF CONTRIBUTOR(S):	Derek Hall
NAME OF ORGANISATION:	Derek Hall, archaeologist and ceramic specialist
TYPE(S) OF PROJECT:	Standing Building Record
NMRS NO(S):	N/A
SITE/MONUMENT TYPE(S):	None
SIGNIFICANT FINDS:	None
NGR (2 letters, 6 figures)	NS
START DATE	6 th February 2012
END DATE	6 th February 2012
PREVIOUS WORK (incl. <i>DES</i> ref.)	None
MAIN (NARRATIVE) DESCRIPTION: (May include information from other fields)	A photographic survey was carried out of the 19 th century rural smithy at Cargill, Perth and Kinross. Blocked windows, doorways and evidence for different phases of the buildings construction were recorded on supplied architects elevation drawings.
PROPOSED FUTURE WORK:	None
SPONSOR OR FUNDING BODY:	Mr Keith Miller
CAPTIONS FOR ILLUSTRS	N/A
ADDRESS OF MAIN CONTRIBUTOR:	34 Glenfarg Terrace, Perth, PH2 0AP
ARCHIVE LOCATION (intended)	NMRS
EMAIL ADDRESS:	Derek.hall1@blueyonder.co.uk

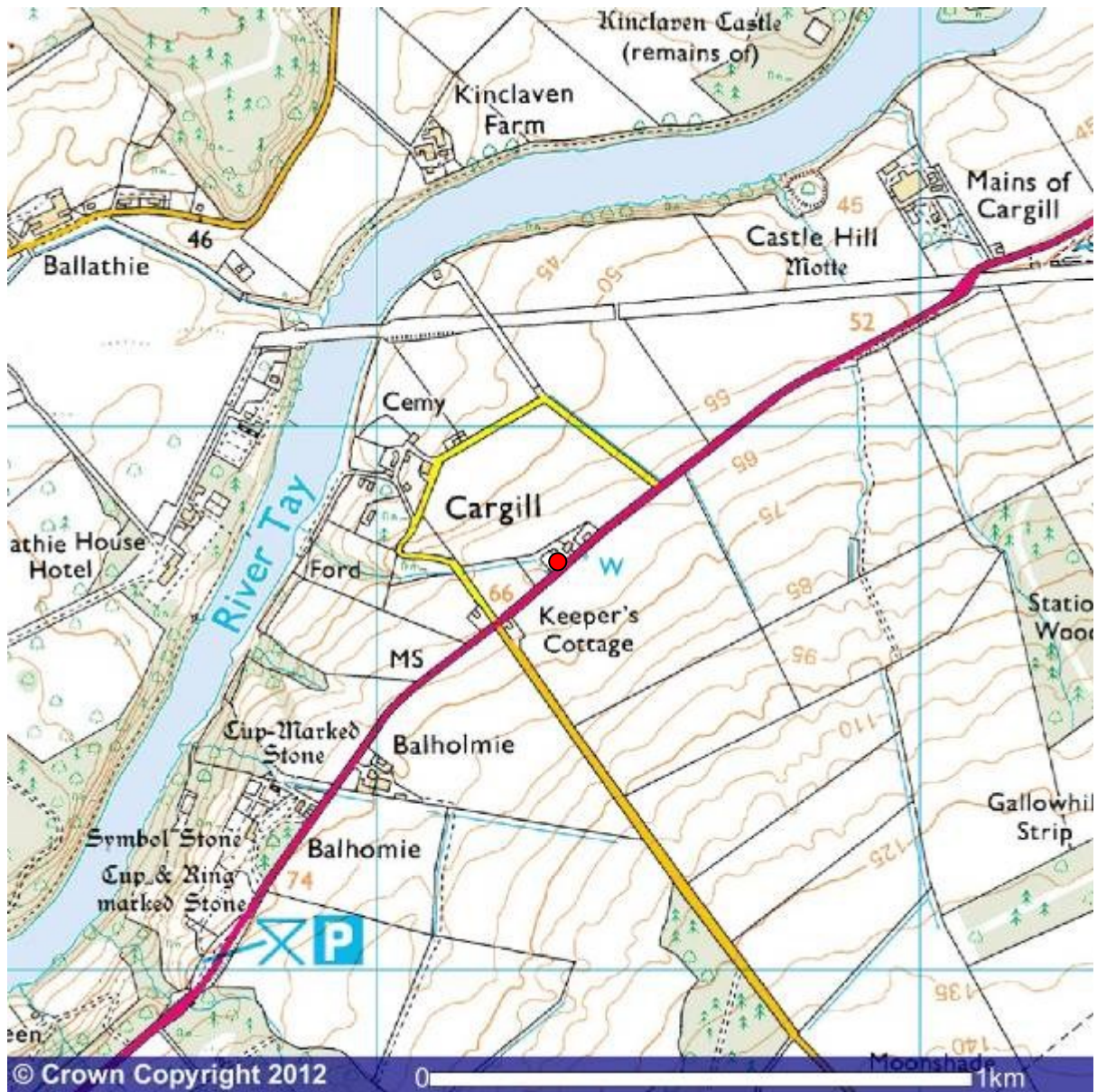


Illustration 1 Site location (red dot) (based on Ordnance Survey map Crown Copyright 2012. All Rights Reserved. Licence number 100049628)

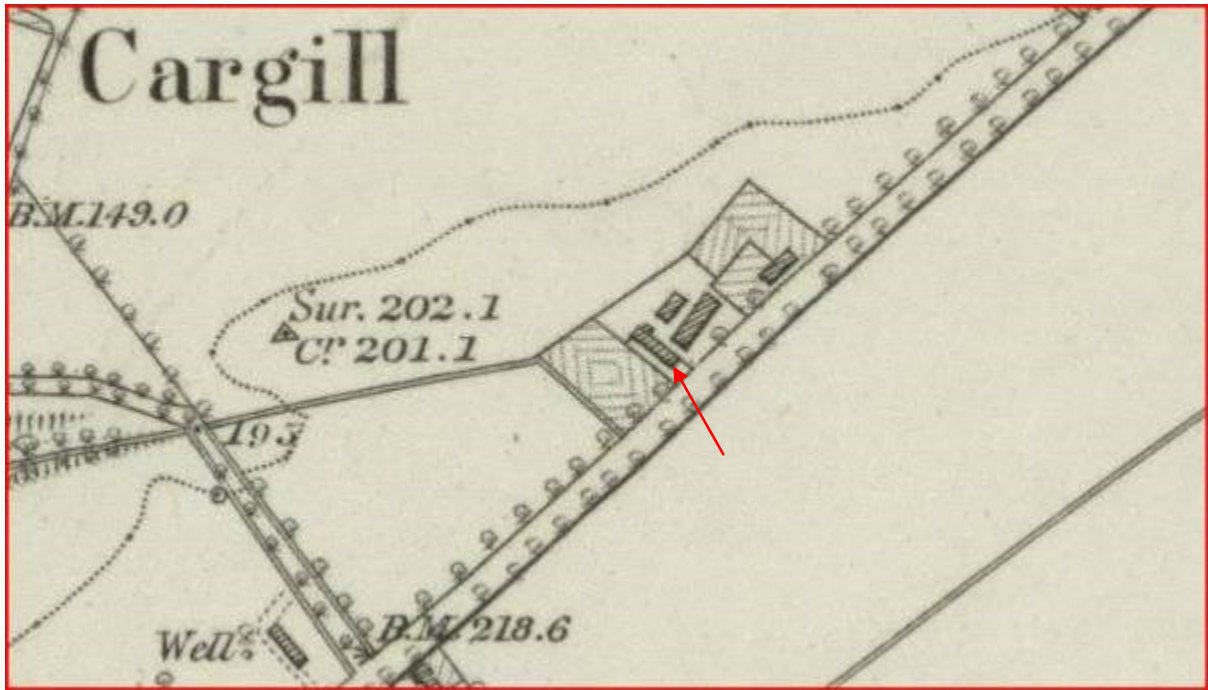


Illustration 2 The Smithy as marked on 1st Edition Ordnance Survey map of 1864 (red arrow) (© Trustees of National Library of Scotland)

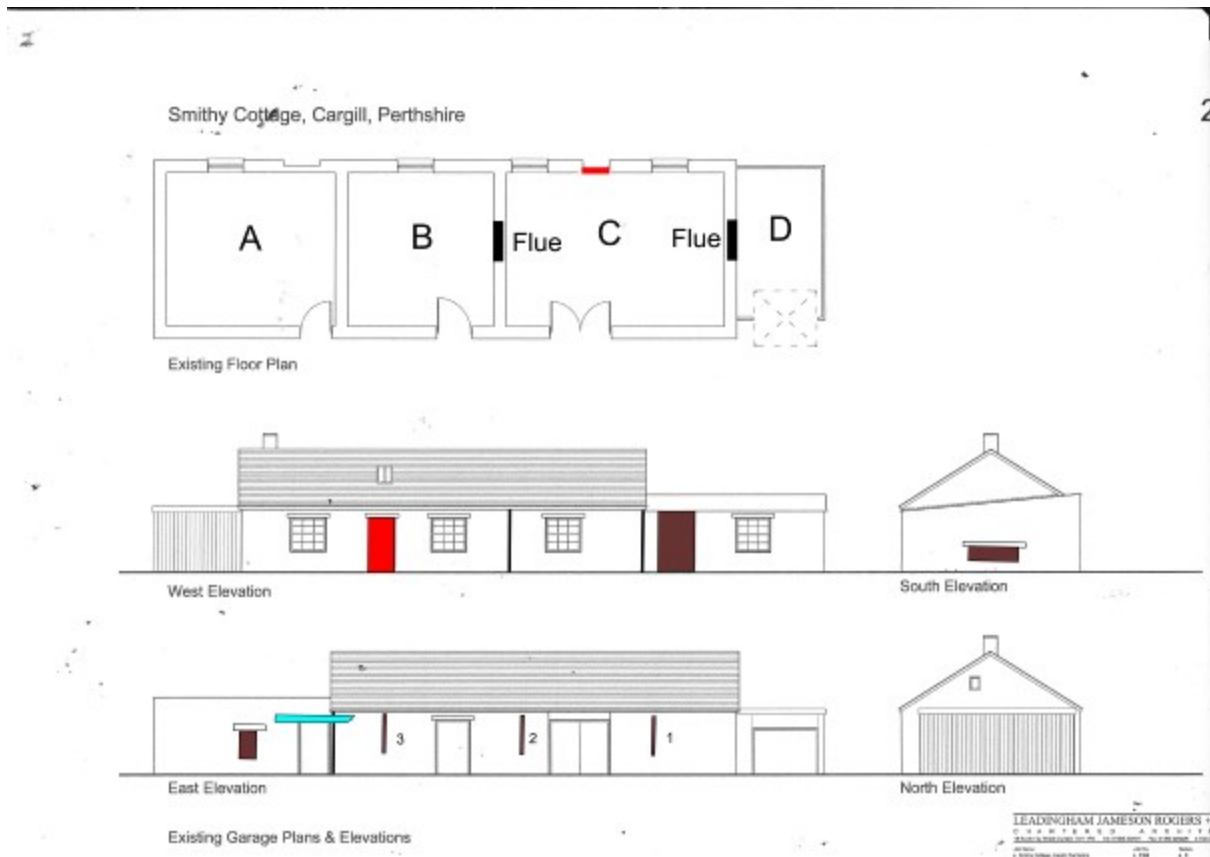


Illustration 3 Building as recorded by survey, elevations marked with blocked doorways (red is brick brown is stone) and windows and visible straight joints (amended architects drawing). Light blue indicates a very long wooden lintel. Scale 1:100 at A3.



Illustration 4 'The Smithy' looking South East



Illustration 5 'The Smithy' in relation to new house to its South and neighbouring cottages to North



Illustration 6 Eastern elevation of extension (A) showing blocked window/access point with stone lintel to right of scale



Illustration 7 Southern elevation of Eastern extension (A) showing single window and blocked doorway



Illustration 8 Northern elevation of Eastern extension (A) showing blocked window (behind scale) and doorway with long wooden lintel



Illustration 9 Southern elevation of main Smithy building (B and C) showing windows, internally blocked doorway and visible straight butt joint to left of scale



Illustration 10 Western elevation of main Smithy building with extension (D) visible in foreground, small hole/window visible in gable end and brick chimney set back from top of gable



Illustration 11 Northern elevation of main Smithy building (B and C) (red arrows indicate position of blocked slit windows)



Illustration 12 Blocked slit window at West end of North elevation (1 on Illustration 3)



Illustration 13 Blocked slit window (2 on Illustration 3)



Illustration 14 Blocked slit window in Northern elevation (3 on Illustration 3)



Illustration 15 Interior of Eastern extension (A) showing inside face of blocked window/access point in elevation



Illustration 16 Northern side of interior of eastern extension (A) showing low subdividing brick wall



Illustration 17 Interior of eastern room (B) in main Smithy building



Illustration 18 Interior of Western room (C) of main Smithy building



Illustration 19 Interior of western room (C) showing sleeper floor, raised platform and concrete floor in foreground



Illustration 20 Flue and chimney base at Western end of western room (C) in main Smithy building



Illustration 21 Flue and chimney base in Eastern elevation of Western room (C) of main Smithy building

