

Further Archaeological Evaluation

Kilmagadwood, Perth and Kinross



Development site looking south (Vane Hill in the background)



19th January 2013

Introduction

This further programme of archaeological works was carried out for Rhubarb Blue Ltd to satisfy the outstanding archaeological condition on the planning consent for this development, as noted by Perth and Kinross Heritage Trust in the Terms of Reference to Planning Application 10/00134/FLL, dated 11th January 2012. This further work was carried out by the author on Wednesday 16th January 2013 (site code KGW02); weather conditions were cold and overcast.

Archaeological Background (Illus 1, 2 and 3)

The proposed development is located in an area of archaeological potential. A prehistoric cinerary urn was discovered in the 1940's in the field adjacent to the proposed development (Stevenson 1948, 145-6; see illus 3 below). A first phase of site evaluation in December 2012 located a line of four cremation urns in close proximity to the proposed location of one of the new houses.

Further Evaluation (Illus 4 to 6)

An area measuring 10m by 11.50m was opened by machine centred on the location of the four cremation urns that were discovered during the first phase site evaluation. Four further cremation urns were located at a similar level to the previous four.

Cremation urns 5 and 6 (Illus 7 and 8)

Both these urns were located to the west of the original line of four at a distance of 0.90m and 0.86m from that line and at a depth of 0.30m below modern ground level. The base of both these urns was visible suggesting that they remain largely intact and have not been touched by the ploughing of the field. The visible part of urn 5 had a diameter of 12cm; urn 6 was 16cm in diameter.

Cremation urns 7 and 8 (Illus 9 and 10)

Both these urns were located to the east of the original line of four at a distance of 1.45m and 1.43m from that line and at a depth of 0.35m below modern ground level. Both these urns had been smashed by ploughing of field and a slightly dispersed cremation burial was visible in the remains of urn 7.

Burnt patch (Illus 11 and 12)

A concentrated patch of black charcoal was located in the south eastern corner of the trench; there was no sign of any cremated bone or pottery associated with this deposit.

Conclusions (Illus 13 and 14)

The opening of a larger area around the four cremation urns located in the first phase site evaluation has located a further four urns in close proximity to the original group. The only other deposit of archaeological interest is the black patch of charcoal in the south eastern corner of the trench although this is not obviously associated with either cremated bone or pottery. Prior to the backfilling of the larger area all of the cremation urns were marked with soil filled plastic bags and the boundary of this concentration of urns was marked with wooden pegs with yellow tops.

Recommendations

The recovery of four further cremation urns suggests that the total group of eight can be regarded as a cremation cemetery. The area around the findspot was pegged out and then located by taped triangulation (Illus 4), this indicates that the cremation urns lie to the south of the proposed site of house 1 at least 2.4m away from its wall line. Preservation in situ may be an option depending on the proposed construction method of that house otherwise full excavation, dating and analysis of the urns and their contents may need to take place. The final decision on the need and scale of any further work however rests with Perth and Kinross Heritage Trust.

Acknowledgements

The author would like to thank Tam Milne and Colin McIntyre for their help with this further evaluation.

Reference

Stevenson, R B K 1948 'An encrusted-urn burial at Scotlandwell, Kinross-shire', *Proc Soc Antiq Scot*, vol.80, 145-6

Illustration List

Illustration 1 Site Location (red circle) (based on Ordnance Survey map Crown Copyright 2012. All Rights Reserved. Licence number 100049628)

Illustration 2 Site location in relation to former cremation urn discovery to NW (plan as supplied by Perth and Kinross Heritage Trust)

Illustration 3 Cremation urn excavated in the field to the west in 1940 (after Stevenson PSAS Vol LXXX)

Illustration 4 Location of larger area around the findspot of the cremation urns (based on supplied architects plan), house footprints are marked as red dotted lines and access roads as blue lines. The eight red dots indicate the location of the cremation urns and the small yellow rectangles the position of the wooden pegs visible after backfilling of the trench. The burnt patch is also shown. Numbered phase 1 site evaluation trenches in the vicinity are also indicated.

Illustration 5 General view of site showing location of larger area in process of excavation looking south

Illustration 6 Larger area opened to level of cremation urns (red arrows indicate positions) looking North

Illustration 7 Detail view of intact cremation urn number 5 looking east

Illustration 8 Detail view of cremation urn number 6 looking east

Illustration 9 Detail view of smashed cremation urn number 7 (marked with red arrow) looking west, cremated bone is also visible.

Illustration 10 Detail view of smashed cremation urn number 8 looking west

Illustration 11 burnt patch towards south eastern corner of trench looking north, red arrow indicates centre of group of cremation urns

Illustration 12 Detail view of burnt patch to south east of group of cremation urns looking north

Illustration 13 location of newly discovered cremation urns (in blue) in relation to previously located ones (in red) and burnt patch to south east Scale 1:100

Illustration 14 defined area around cremation urns as pegged out prior to backfilling of trench looking north

Discovery & Excavation in Scotland Entry

LOCAL AUTHORITY:	Perth and Kinross
PROJECT TITLE/SITE NAME:	Two new dwelling houses at Kilmagadwood
PROJECT CODE:	KGW02
PARISH:	Portmoak
NAME OF CONTRIBUTOR(S):	Derek Hall
NAME OF ORGANISATION:	Derek Hall, archaeologist and ceramic specialist
TYPE(S) OF PROJECT:	Further Archaeological Evaluation
NMRS NO(S):	NO10SE1
SITE/MONUMENT TYPE(S):	Cremation urns
SIGNIFICANT FINDS:	None
NGR (2 letters, 6 figures)	NO 18057 02119
START DATE	16th January 2013
END DATE	16th January 2013
PREVIOUS WORK (incl. <i>DES</i> ref.)	First phase evaluation December 2012
MAIN (NARRATIVE) DESCRIPTION: (May include information from other fields)	A larger area measuring 10m by 11.50m was opened centred on the line of four cremation urns that were discovered in the first phase of site evaluation. A further four cremation urns were located in close proximity to the first find spot, two of these were intact the other two had been smashed by the plough. An area of burning was also located which was not obviously associated with either cremated bone or pottery.
PROPOSED FUTURE WORK:	Unknown
SPONSOR OR FUNDING BODY:	Rhubarb Blue Ltd
CAPTIONS FOR ILLUSTRS	N/A
ADDRESS OF MAIN CONTRIBUTOR:	34 Glenfarg Terrace, Perth, PH2 0AP
ARCHIVE LOCATION (intended)	NMRS
EMAIL ADDRESS:	Derek.hall1@blueyonder.co.uk

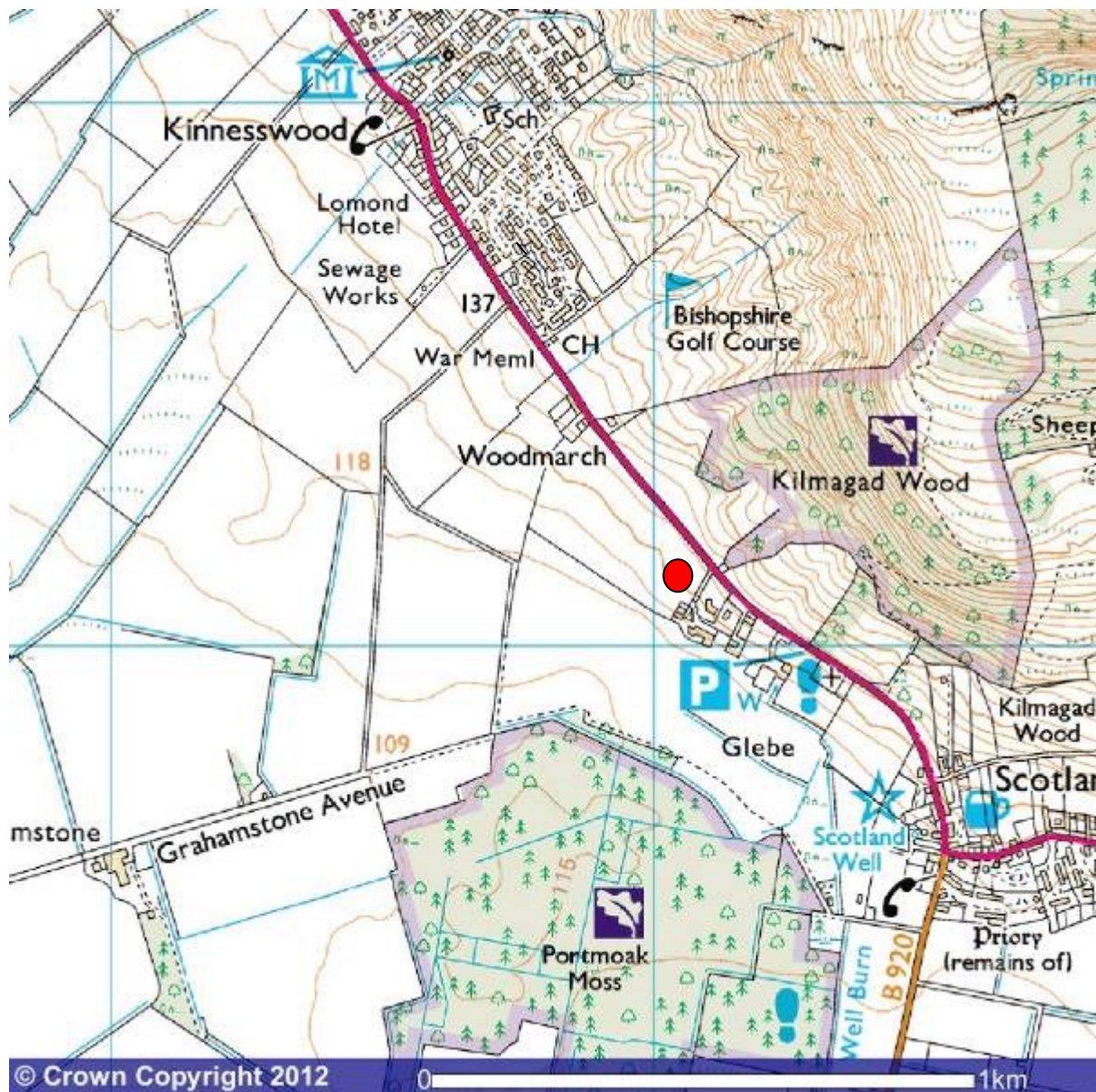


Illustration 1 Site Location (red circle) (based on Ordnance Survey map Crown Copyright 2012. All Rights Reserved. Licence number 100049628)

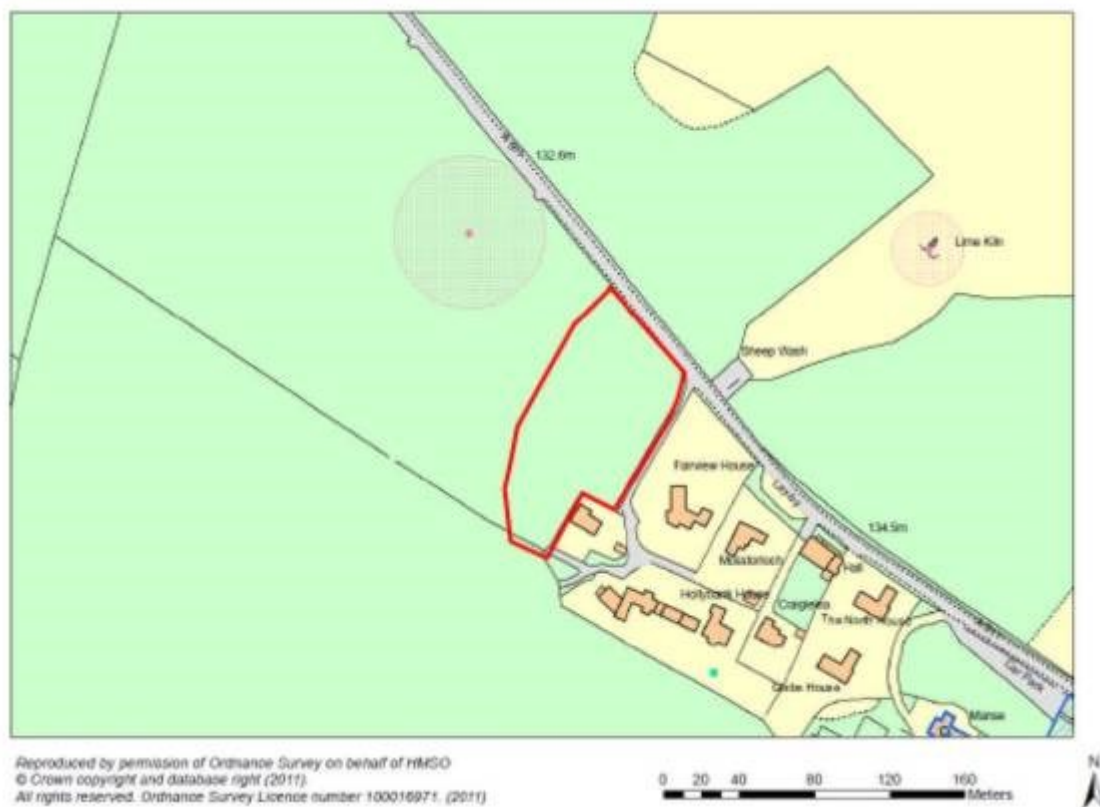


Illustration 2 Site location in relation to former cremation urn discovery to NW (plan as supplied by Perth and Kinross Heritage Trust)



1. Encrusted Urn from Scotlandwell. ($\frac{1}{4}$.)



2. Scotlandwell: Urn *in situ*.



3. Scotlandwell: Paving on which the Urn rested.

R. B. K. STEVENSON.

[To face p. 146,

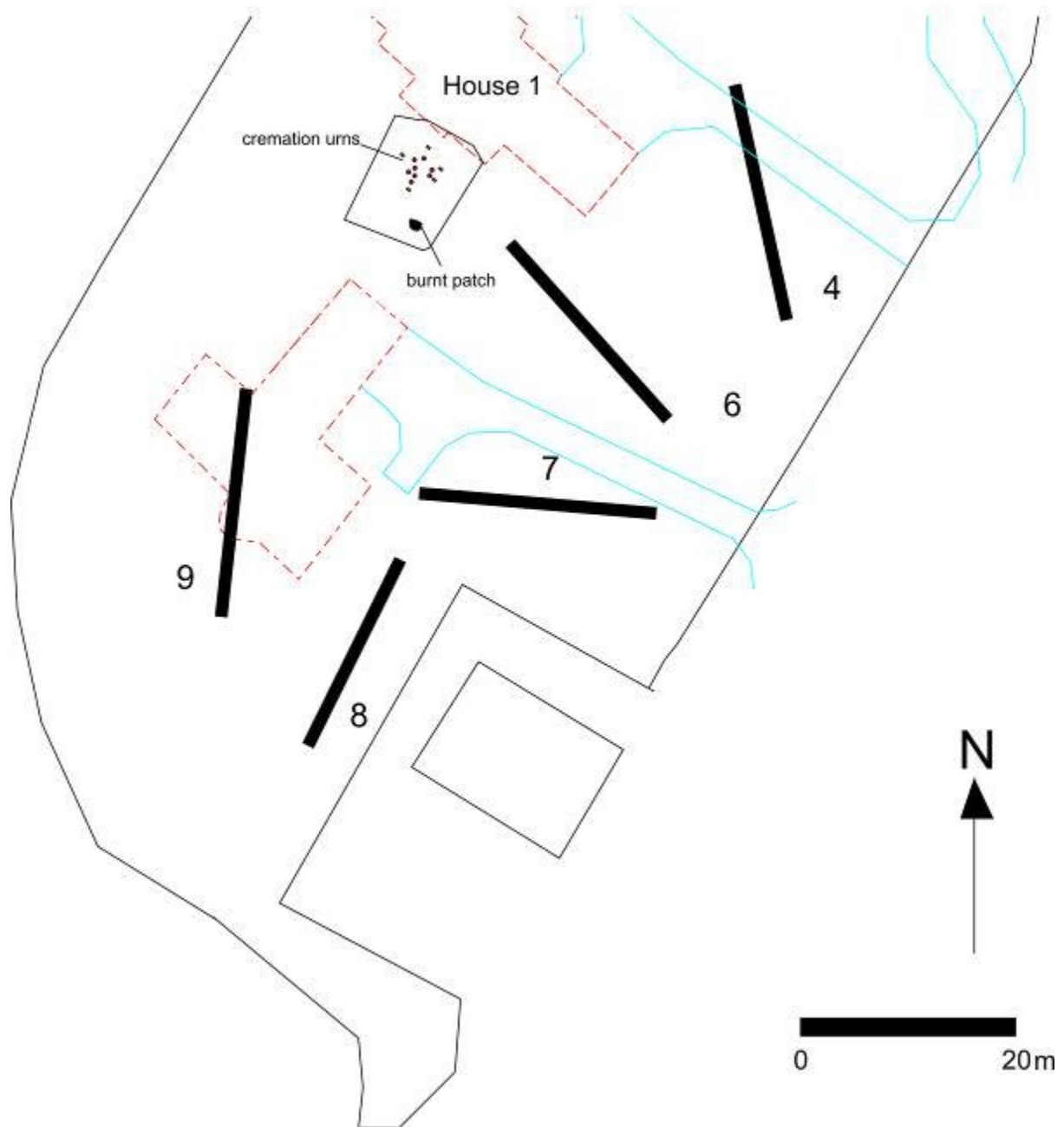


Illustration 4 Location of larger area around the findspot of the cremation urns (based on supplied architects plan), house footprints are marked as red dotted lines and access roads as blue lines. The eight red dots indicate the location of the cremation urns and the small yellow rectangles the position of the wooden pegs visible after backfilling of the trench. The burnt patch is also shown. Numbered phase 1 site evaluation trenches in the vicinity are also indicated.



Illustration 5 General view of site showing location of larger area in process of excavation looking south (Vane Hill in background)



Illustration 6 Larger area opened to level of cremation urns (red arrows indicate positions) looking North



Illustration 7 Detail view of intact cremation urn number 5 (marked with red arrow) looking east



Illustration 8 Detail view of cremation urn number 6 (marked with red arrow) looking east



Illustration 9 Detail view of smashed cremation urn number 7 (marked with red arrow) looking west, cremated bone is also visible.



Illustration 10 Detail view of smashed cremation urn number 8 (marked with red arrow) looking west



Illustration 11 burnt patch towards south eastern corner of trench looking north, red arrow indicates centre of group of cremation urns



Illustration 12 Detail view of burnt patch to south east of group of cremation urns looking north

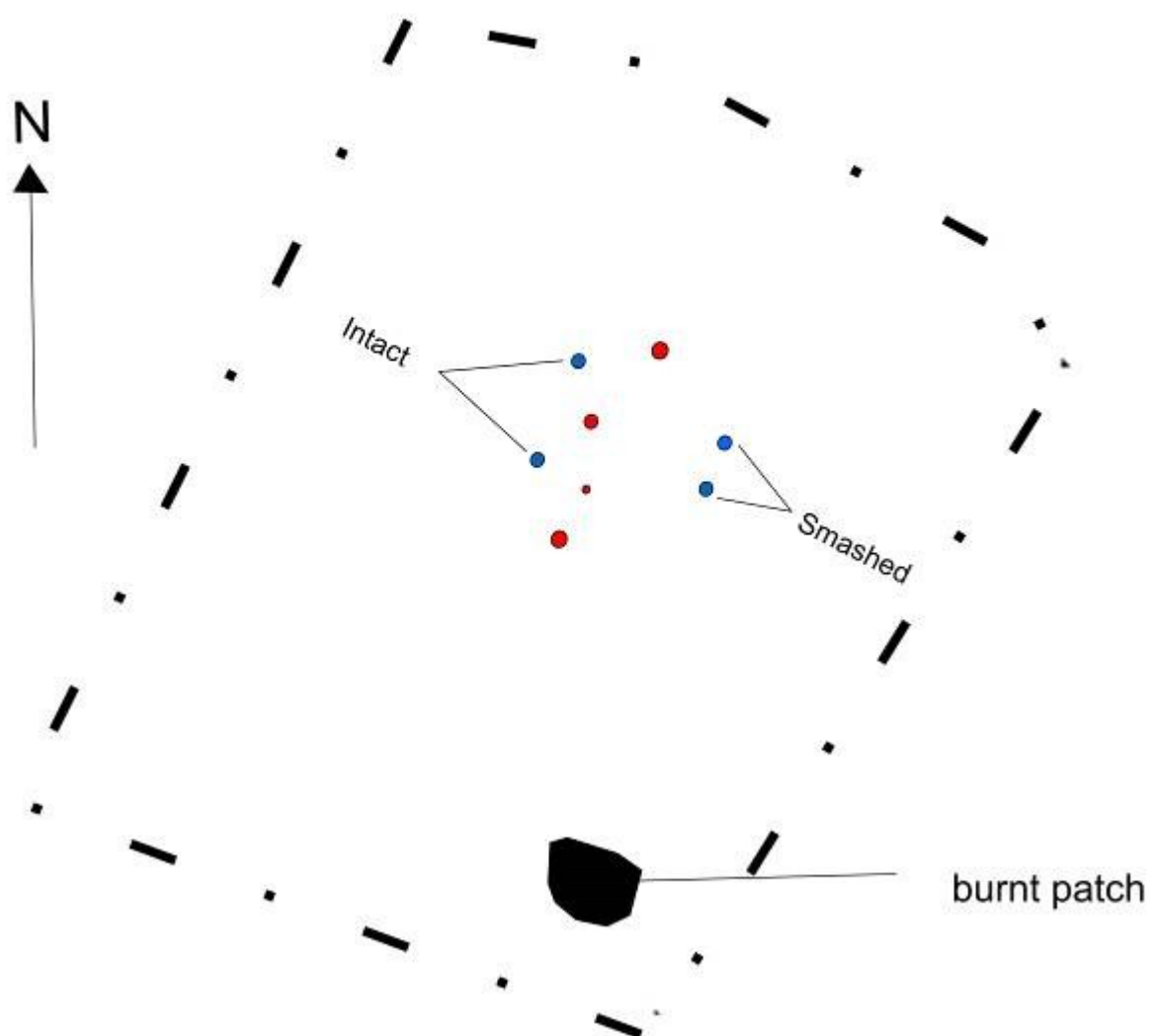


Illustration 13 location of newly discovered cremation urns (in blue) in relation to previously located ones (in red) and burnt patch to south east Scale 1:100



Illustration 14 defined area around cremation urns as pegged out prior to backfilling of trench looking north