

Standing Building Survey

Burial enclosure, Cleish Parish Church,
Perth and Kinross



Burial enclosure on north-western corner of Cleish Parish Church looking south east



1st March 2013

Introduction

The planning consent for this development, Perth and Kinross Council Planning Application 11/01710/FLL dated 10th January 2013, included a planning condition that required a Level 1 standing building survey of the burial enclosure and northern elevation of the church prior to the proposed redevelopment. This standing building survey was carried out by the author on Friday 8th February 2013 (Site Code CLE01); weather conditions were cold, damp and overcast.

Historical Background (Illus 1)

The site of Cleish Parish Church appears to have been a site of worship since at least the medieval period. The parish was disjoined from Kinross in 1685. A new church was built in 1775, designed by renowned architect John Adam, but this was destroyed by fire in 1832, when the current church was erected. The church is B-listed, has memorials to the Adams of Blairadam and Young's of Cleish inside, and an 18th-century sundial from the old church on the S wall exterior. A high medieval cross fragment was discovered inside the church in 1980 and this is now displayed on a pedestal by the church entrance with a simple interpretation panel.

Description of burial enclosure

Location (Illus 2 and 3)

The burial enclosure is built against the external face of the northern elevation of the church at its north-western corner. All of the enclosure walls are built of cut and dressed red sandstone blocks and are capped with flat sandstone slabs. The enclosure has a single gated entrance on its western side.

External elevations (Illus 4 to 6)

These are all plain apart from the western elevation which contains a gated entrance. The walls stand four courses high are 0.46m thick and are capped with flat sandstone slabs 0.60m thick.

Internal Southern Elevation (Illus 7, 8 and 14)

This internal elevation has a single gravestone (0.17m thick) built into it which reads:

‘HERE REST THE REMAINS OF
HARY YOUNG ESQ
OF CLEISH AND WARROCH
WHO DIED 1 OCTOBER 1780 AGED 68
AND OF MARGARET CHALMERS HIS WIFE
WHO DIED 14 JUNE 1780 AGED 30
AND OF THEIR CHILDREN

MARGARET

WHO DIED 21 DEC 1778 AGED 3 MONTHS

THOMAS

WHO DIED 8 DEC 1780 AGED 6 MONTHS

ALSO OF JOHN YOUNG ESQ OF CLEISH

THEIR ELDEST SON WHO DIED 19 FEB 1840

AGED 71

GRIZZELL

WHO DIED 25 MAY 1850 AGED 76

AND OF ALEXANDER YOUNG MD THEIR

GRANDSON

WHO DIED 20 AGUST 1848 AGED

31'

At the bottom of this gravestone at each of its ends are small square sandstone blocks, the eastern one of these has 'Hunter Edin' carved into it. The lower course of this elevation has been faced with mortar which is now cracked and broken, there are occasional loose stones in this lower course.

Internal western elevation(Illus 9 , 10 and 15)

This internal elevation has a gravestone (0.17m thick) built into it which reads:

'In loving memory of

MARY JOHNSTON

WIFE OF HARRY YOUNG ESQ OF CLEISH

WHO DIED AT CLEISH CASTLE

21 SEPTEMBER 1850 AGED 74

AND OF HARRY YOUNG OF CLEISH

WHO DIED AT CLEISH CASTLE

19 OCTOBER 1893 AGED 77'

The bottom of this gravestone also has small square sandstone blocks at each end, the southern one of these has 'Hunter Edin' carved into it.

Internal northern elevation(Illus 11, 12 and 16)

This internal elevation is plain apart from single block which has a cartouche with an inscription which reads:

‘JY
1813’

Internal eastern elevation(Illus 13 and 17)

This internal elevation is plain but has an entrance at its southern end which has a wrought iron gate.

Interior of burial enclosure (Illus 18)

This is a mixture of grass and gravel, there are no gravestones present.

Other gravestone(Illus 3 and 6)

Lying to the east of the eastern wall of the burial enclosure is a flat graveslab which is very moss grown and has no visible inscription.

Internal elevation of church(Illus 19 and 20)

A photographic record was also made of the north western corner of the church at the point at which the entry to the new vestry will be made.

Summary

The external burial enclosure at Cleish Parish Church has an internal date stone suggesting that it was built in 1813, it contains grave memorials to members of the Young family of Cleish at least two of whom are recorded as dying in Cleish Castle. There is no sign of any reused stonework that may have originated from earlier buildings on the site.

Illustration List

Illustration 1 Location of Cleish Parish Church (based on Ordnance Survey map Crown Copyright 2013. All Rights Reserved. Licence number 100049628)

Illustration 2 Location plan of burial enclosure indicated by red arrow (based on supplied architects drawing) Scale 1:250

Illustration 3 General view of burial enclosure and western end of northern elevation of church looking south west, flat graveslab out side enclosure also visible

Illustration 4 External west facing elevation of burial enclosure

Illustration 5 External north facing elevation of burial enclosure

Illustration 6 External east facing elevation of burial enclosure (flat graveslab visible in foreground)

Illustration 7 Internal south facing elevation of burial enclosure showing grave memorial

Illustration 8 Detail of grave memorial on south facing elevation of burial enclosure

Illustration 9 Internal west facing elevation of burial enclosure showing grave memorial

Illustration 10 Detail of grave memorial on west facing elevation of burial enclosure

Illustration 11 internal north facing elevation of burial enclosure showing date stone (to left of scale)

Illustration 12 detail view of date stone in north facing elevation of burial enclosure

Illustration 13 internal east facing elevation of burial enclosure showing gated entrance

Illustration 14 Drawing of south facing elevation of burial enclosure Scale 1:40

Illustration 15 Drawing of west facing internal elevation of burial enclosure Scale 1:40

Illustration 16 Drawing of north facing internal elevation of burial enclosure Scale 1:40

Illustration 17 Drawing of east facing internal elevation of burial enclosure Scale 1:40

Illustration 18 View of interior of burial enclosure looking east

Illustration 19 Internal view of north eastern corner of church at point where new entry to vestry where entrance will be made

Illustration 20 Detail of north western interior of church at point where new entry to vestry will be made

Discovery & Excavation in Scotland Entry

LOCAL AUTHORITY:	Perth and Kinross Council
PROJECT TITLE/SITE NAME:	Cleish Parish Church
PROJECT CODE:	CLE01
PARISH:	Cleish
NAME OF CONTRIBUTOR(S):	Derek Hall
NAME OF ORGANISATION:	Derek Hall, archaeologist and ceramic specialist
TYPE(S) OF PROJECT:	Standing Building Record
NMRS NO(S):	N/A
SITE/MONUMENT TYPE(S):	Burial enclosure
SIGNIFICANT FINDS:	None
NGR (2 letters, 6 figures)	NN 530 287
START DATE	8th February 2013
END DATE	8th February 2013
PREVIOUS WORK (incl. <i>DES</i> ref.)	None
MAIN (NARRATIVE) DESCRIPTION: (May include information from other fields)	A level 1 survey was carried out of the burial enclosure built against the north western corner of Cleish Parish Church. A full drawn and photographic record was made of the elevations, grave memorials and date stone.
PROPOSED FUTURE WORK:	None
SPONSOR OR FUNDING BODY:	Kirk Session, Cleish Parish Church
CAPTIONS FOR ILLUSTRS	N/A
ADDRESS OF MAIN CONTRIBUTOR:	34 Glenfarg Terrace, Perth, PH2 0AP
ARCHIVE LOCATION (intended)	NMRS
EMAIL ADDRESS:	Derek.hall1@blueyonder.co.uk



Illustration 1 Location of Cleish Parish Church (based on Ordnance Survey map Crown Copyright 2013. All Rights Reserved. Licence number 100049628)

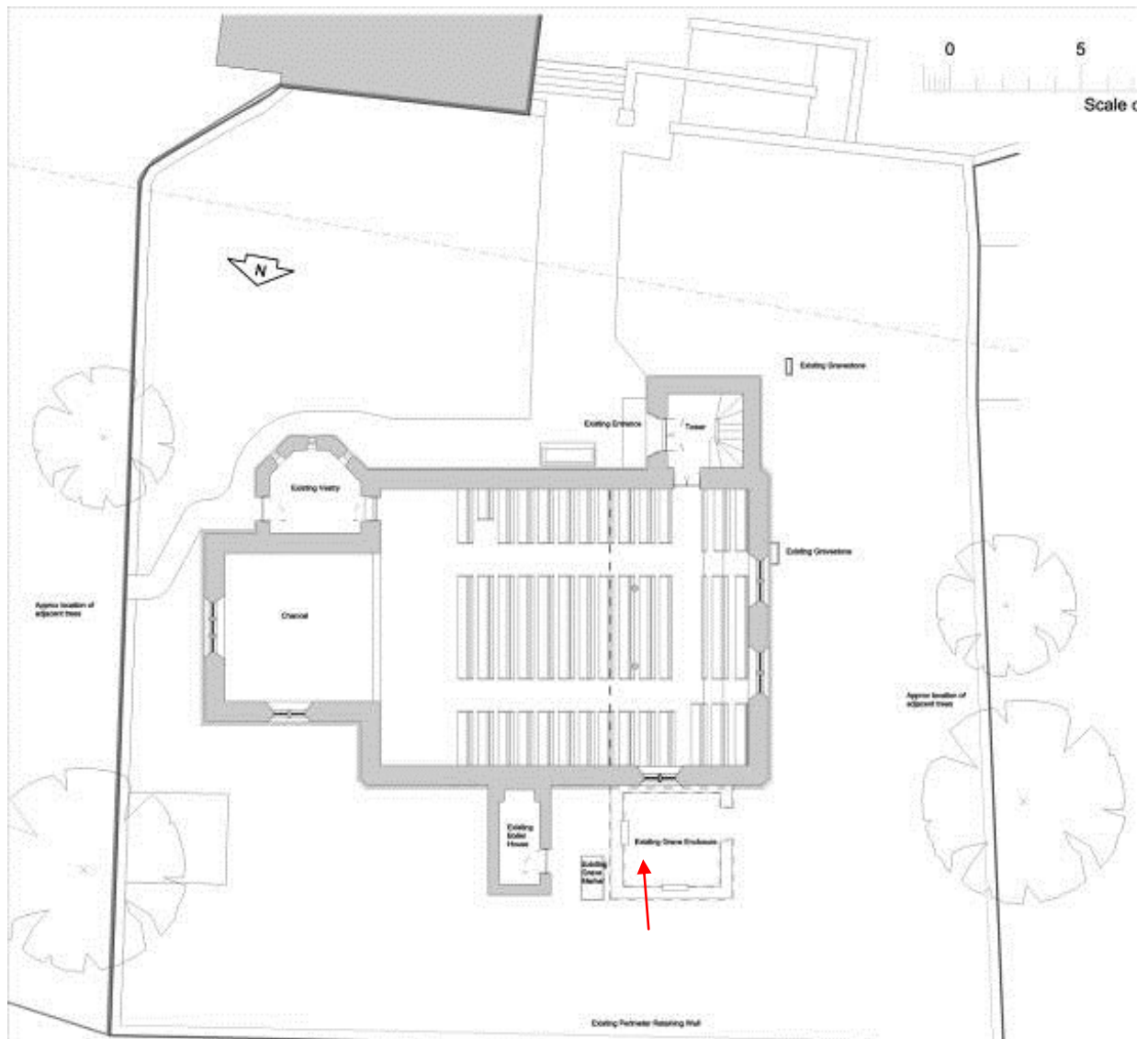


Illustration 2 Location plan of burial enclosure indicated by red arrow (based on supplied architects drawing) Scale 1:250



Illustration 3 General view of burial enclosure and western end of northern elevation of church looking south west, flat graveslab out side enclosure also visible



Illustration 4 External west facing elevation of burial enclosure



Illustration 5 External north facing elevation of burial enclosure



Illustration 6 External east facing elevation of burial enclosure (flat graveslab visible in foreground)



Illustration 7 Internal south facing elevation of burial enclosure showing grave memorial



Illustration 8 Detail of grave memorial on south facing elevation of burial enclosure



Illustration 9 Internal west facing elevation of burial enclosure showing grave memorial



Illustration 10 Detail of grave memorial on west facing elevation of burial enclosure



Illustration 11 internal north facing elevation of burial enclosure showing date stone (to left of scale)



Illustration 12 detail view of date stone in north facing elevation of burial enclosure



Illustration 13 internal east facing elevation of burial enclosure showing gated entrance

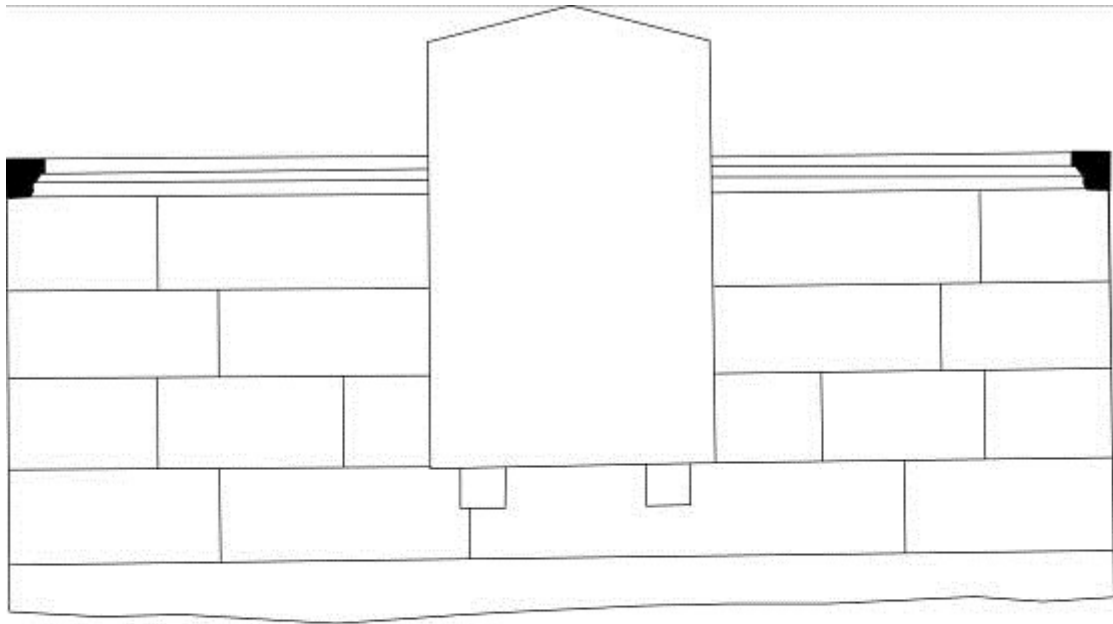


Illustration 14 Drawing of south facing elevation of burial enclosure Scale 1:40

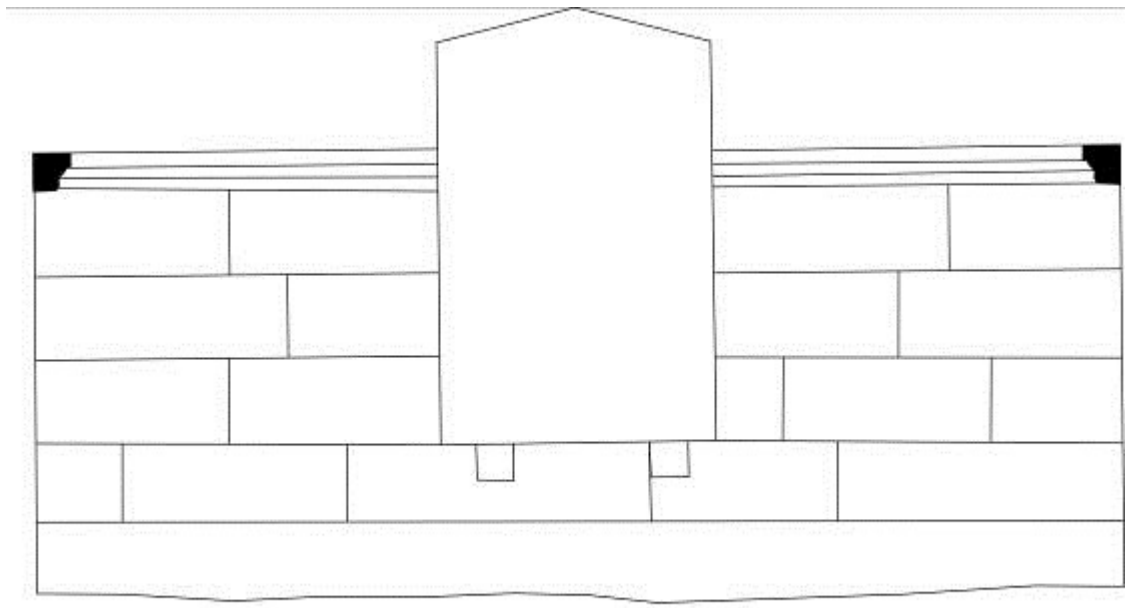


Illustration 15 Drawing of west facing internal elevation of burial enclosure Scale 1:40

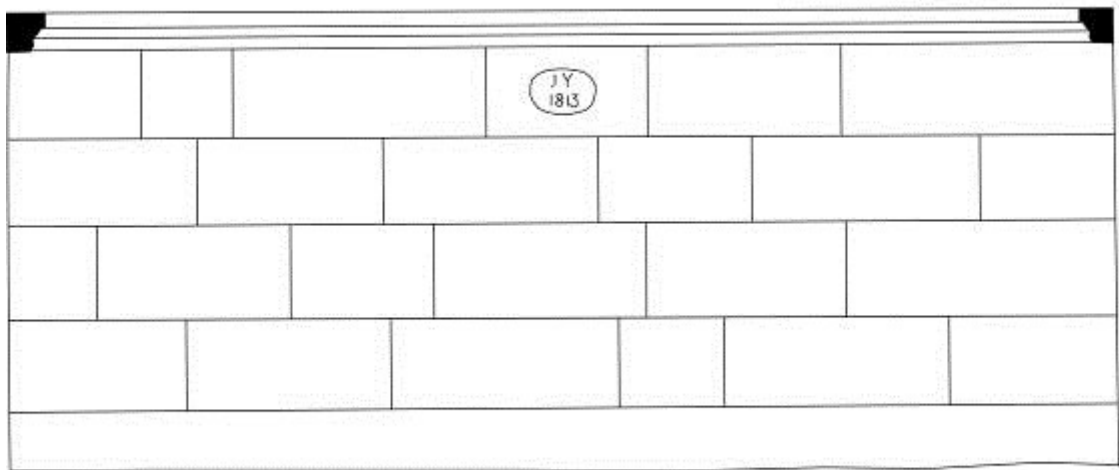


Illustration 16 Drawing of north facing internal elevation of burial enclosure Scale 1:40

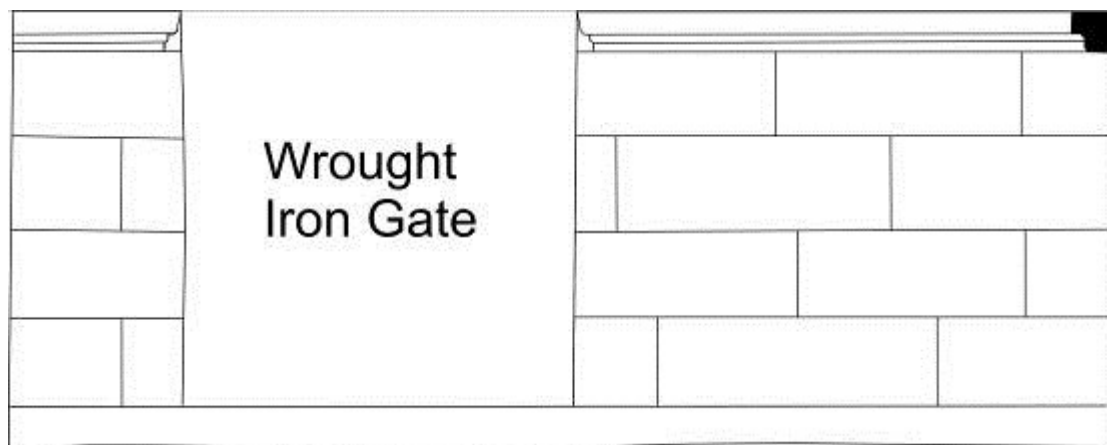


Illustration 17 Drawing of east facing internal elevation of burial enclosure Scale 1:40



Illustration 18 View of interior of burial enclosure looking east



Illustration 19 Internal view of north eastern corner of church at point where new entry to vestry where entrance will be made



Illustration 20 Detail of north western interior of church at point where new entry to vestry will be made