

Standing Building Survey  
Pleasance Road Tannery, Coupar Angus  
Perth and Kinross



Pleasance Road Tannery buildings from the south



5th May 2013

## **Introduction**

The planning consent for this development, Perth and Kinross Council Planning Application 07/02696/FUL dated 14th January 2013, included a planning condition that required a Level 2 standing building survey of the standing remains of the former Strathmore Tannery, Pleasance Road, Coupar Angus. This standing building survey was carried out by the author on Monday 29th April 2013 (Site Code COU02); weather conditions were bright and windy.

## **Historical Background (Illus 1 and 2)**

The development site was considered to be archaeologically sensitive for two reasons. The Tannery buildings to be demolished date from the mid 19th century and formed part of the Strathmore Tannery. The buildings survive as a group of rubble buildings, the largest of which is a four-storey, six-bay block with louvered ventilators in the top floor. It is recommended that a programme of standing building recording takes place to ensure a record is created of these industrial buildings that have played a part in the industrial history of Coupar Angus. The complete tannery layout is best shown on the First Edition Ordnance Survey map of 1867 (Illus 2) which shows a long building running across the site to a mill lade which is now culverted. Limited documentary research of the Census record has indicated that the tanner in 1871 was one John MacPherson who lived on site (at Tanyard Cottage) with his wife and four children ([www.scotlandspeople.gov.uk](http://www.scotlandspeople.gov.uk) 1871 Census).

## **Building Survey (Illus 3)**

The group of five buildings on the site at Pleasance Road were labelled as shown on Illustration 3 and then recorded separately.

## **Location (Illus 4, 5, 6 and 7)**

The site of the former Strathmore Tannery lies on the eastern side of Pleasance Road on the western side of Coupar Angus.

### *Building A (Illus 8)*

This structure stands two storeys high and is built of red sandstone; its top floor level has wooden walls. It is topped with a slate roof.

### *Northern elevation (Illus 9)*

At ground floor level there are five windows and a sliding wooden door. At first floor level there are three slightly smaller windows. At the top floor level there are three small windows and six skylights/louvers.

### *Eastern elevation (Illus 10)*

The western end of Building A has been demolished at some point in the past and this elevation is a section through the building. The ground floor, first and second floor levels have all been blocked with brick walls and blocked doorways are visible at first and second floor level. A steel girder is visible running across the building just above the lintel of the doorway at first floor level.

### *Southern elevation (Illus 11)*

At ground floor level there are four windows and there is a sliding door at the western end of this elevation. At first floor level there are two wooden doors with small windows and then above that another wooden door and three small windows. At top floor level there are three small windows.

### *Western elevation (Illus 12)*

This elevation is plain and has Building B built against it.

### *Interior of Building A*

#### *Ground Floor accessible from north side (Illus 13 and 14)*

This has a concrete floor and a set of steps in its north eastern corner which lead up to a wooden stair which leads up to the first floor. Its eastern elevation is built of brick and its western elevation is built of concrete.

#### *Ground Floor accessible from south side (Illus 15 and 16)*

This has a concrete floor and a small wooden office building in its south western corner. Its eastern elevation is built of concrete breeze blocks and its western one is stone. There is no visible access to the first floor.

#### *First Floor (Illus 17, 18, 19 and 20)*

This is a very big enclosed space and has a wooden floor and a set of wooden stairs against its southern elevation which lead up to wooden door and then up to the top floor. Against its northern elevation there is an electric motor which drove a belt which runs up to top floor level. A wooden chute leads down from the top floor towards the lower of the two wooden doors in the southern internal elevation.

#### *Second Floor (Illus 21-23)*

This is a much lower enclosed space than the first floor and has a wooden floor and a wooden roof. There are a line of narrow windows/louvers which have red leaded glass in them. One of the wooden upright on this floor has a fire extinguisher on it.

### *Building B*

This is a single storey building that is built against the western end of Building A. It is built of red sandstone and the part at its western end is still lived in.

### *Northern Elevation (Illus 24)*

This elevation has four windows, two of which are blocked and a blocked doorway.

### *Southern Elevation (Illus 25)*

This elevation has four windows, two of which are blocked and another access door which is now in use as a garage.

### *Western Elevation (Illus 5)*

This elevation faces on to Pleasance Road and is part of the occupied house.

### *Building C (Illus 26 – 28)*

This structure lies to the south of Buildings A and B and is on an east to west alignment. Its walls are brick built on a stone base. At its eastern end a ramped slope leads up on to it. This building appears to have functioned as a loading bay for the tannery. At its western end there is a small structure built of wooden sleepers and loose bricks of uncertain function.

### *Building D (Illus 29)*

This is a corrugated iron lean to on vertical metal supports. Its eastern end is a brick and stone wall which provides the support for the structure. It has a concrete floor.

### *Building E*

This is a single storey structure that is on an east to west alignment. It is built of harled concrete and has a concrete panelled roof.

### *Southern Elevation (Illus 30)*

This elevation has seven windows (glass panelled) and two steel loading bay doors and a wooden door at its eastern end.

### *Western Elevation (Illus 31)*

This is a plain elevation with a single door at its northern end.

### *Northern Elevation (Illus 32)*

This elevation has nine windows (glass panelled).

### *Eastern Elevation (Illus 33)*

This elevation is plain.

### *Interior of Building E (Illus 34-36)*

This building is split into two internal rooms, the one at the eastern end contains former offices the other room occupies the rest of the building and they both have concrete floors.

### *Boundary around complex of buildings (Illus 37-38)*

This building complex is surrounded by a stone wall on its eastern wide (back garden wall of properties) on Abbey Road and Abbey Gardens. Its southern side is surrounded by a tall stone wall

which has a window looking out from the loading bay. The northern and western boundaries are comprised of a wire fence, the entrance gates are in the western boundary.

#### *Yard area (Illus 4)*

The area to the north of Building E is grassed over, there are concrete surfaces on the western and southern sides of Building E and an access road running around its northern side and there are traces of former metalled surfaces between Buildings A and E and Buildings C and A.

### **Summary**

Buildings A, B and C appear to belong to the Strathmore Tannery phase of activity on this site. Building A has the interesting survival of an entirely wooden top floor level with red leaded glass louvers on its northern side. This top floor level was presumably designed to aid the drying of the skins. The electric driven belt and chute at first floor level were presumably connected with the transport of material from the top floor down to a wooden doored access point on the first floor which is on the same side as the loading bay (Building C). The demolition of the western end of Building A at some point in antiquity has removed the other elements of the tanning industry such as the tanks etc. Building B presumably acted as the offices and accommodation for the tannery and is now still partly occupied at its western end. Building C appears to have been a loading bay and lies on the side of Building A that has the main wooden access doors. Buildings D and E would appear to relate to a later phase of activity on the site.

### **References**

**Cartographic Sources** (<http://www.nls.uk/maps>)

Ordnance Survey Maps - Six-inch 1st edition, Scotland, 1843-1882

### **Census Record**

[www.scotlandspeople.gov.uk](http://www.scotlandspeople.gov.uk)

## Illustration List

Illustration 1 Location of Pleasance Road tannery (red dot) (based on Ordnance Survey map Crown Copyright 2013. All Rights Reserved. Licence number 100049628)

Illustration 2 Tannery as marked on First Edition Ordnance Survey map of 1864, note that main tannery building runs across entire site up to the Mill lade. (©Trustees of the National Library of Scotland)

Illustration 3 Location of Buildings A, B, C, D and E (based on supplied topographic survey)

Illustration 4 Illustration 35 general view of northern side of site showing Building E with top of Building A just visible looking south

Illustration 5 entrance into site from Pleasance Road looking east showing Buildings E (to left), D (at red arrow), A and B

Illustration 6 General view of southern sides of Buildings B and A and location of Building C (at red arrow) looking east

Illustration 7 General view of Building A and site from the south, Abbey Church marked by red arrow

Illustration 8 General view of Buildings A, C (red arrow) and E looking west

Illustration 9 northern elevation of Building A (line of louvers at top floor level marked by red arrows)

Illustration 10 eastern elevation of Building A

Illustration 11 southern elevation of Building A red arrow indicates door in front of chute on first floor (see Illus 18)

Illustration 12 western elevation of Building A at junction with Building B

Illustration 13 Ground floor of Building A accessible from north side showing wooden stair to first floor

Illustration 14 western side of ground floor of Building A accessible from north

Illustration 15 Ground floor of Building A accessible from south

Illustration 16 Ground floor of Building A accessible from south showing office building

Illustration 17 eastern end of first floor level of Building A

Illustration 18 steps to top floor level on first floor of Building A, chute from top floor also visible

Illustration 19 western end of first floor of Building A

Illustration 20 electric motor and drive belt on first floor of Building A

Illustration 21 western end of top floor of Building A

Illustration 22 northern side of top floor of Building A showing four of red leaded glass louvers

Illustration 23 eastern end of top floor of Building A showing remaining red leaded glass louvers and fire extinguisher at red arrow

Illustration 24 north facing elevation of Building B looking west

Illustration 25 south facing elevation of Building B looking north west

Illustration 26 north facing elevation of Building C (Loading Bay) looking west

Illustration 27 west facing elevation of Building C looking south east

Illustration 28 View of sleeper built structure in Building C looking south east

Illustration 29 Detail of structure on top of loading bay (Building C) built of sleepers and loose bricks looking east

Illustration 30 Building D looking north

Illustration 31 south facing elevation of Building E looking north west

Illustration 32 western elevation of Building E looking south east

Illustration 33 northern elevation of Building E looking east

Illustration 34 eastern elevation of Building E looking north

Illustration 35 Former office buildings at eastern end of Building E

Illustration 36 interior of eastern end of Building E looking north

Illustration 37 interior of remainder of Building E looking west

Illustration 38 stone wall forming southern boundary around tannery buildings looking south east

Illustration 39 window in southern boundary wall looking south

## Discovery & Excavation in Scotland Entry

LOCAL AUTHORITY:	Perth and Kinross Council
PROJECT TITLE/SITE NAME:	Pleasance Road tannery, Coupar Angus
PROJECT CODE:	COU01
PARISH:	Coupar Angus
NAME OF CONTRIBUTOR(S):	Derek Hall
NAME OF ORGANISATION:	Derek Hall, archaeologist and ceramic specialist
TYPE(S) OF PROJECT:	Standing Building Record
NMRS NO(S):	N/A
SITE/MONUMENT TYPE(S):	Strathmore Tannery
SIGNIFICANT FINDS:	None
NGR (2 letters, 6 figures)	NO 22180 39624
START DATE	29th April 2013
END DATE	29th April 2013
PREVIOUS WORK (incl. <i>DES</i> ref.)	None
MAIN (NARRATIVE) DESCRIPTION: (May include information from other fields)	A level 2 survey was carried out of the surviving buildings in the Strathmore Tannery complex prior to redevelopment. All buildings were photographically recorded and a written description was made.
PROPOSED FUTURE WORK:	None
SPONSOR OR FUNDING BODY:	Peter Thomson, Proactive
CAPTIONS FOR ILLUSTRS	N/A
ADDRESS OF MAIN CONTRIBUTOR:	34 Glenfarg Terrace, Perth, PH2 0AP
ARCHIVE LOCATION (intended)	NMRS
EMAIL ADDRESS:	Derek.hall1@blueyonder.co.uk



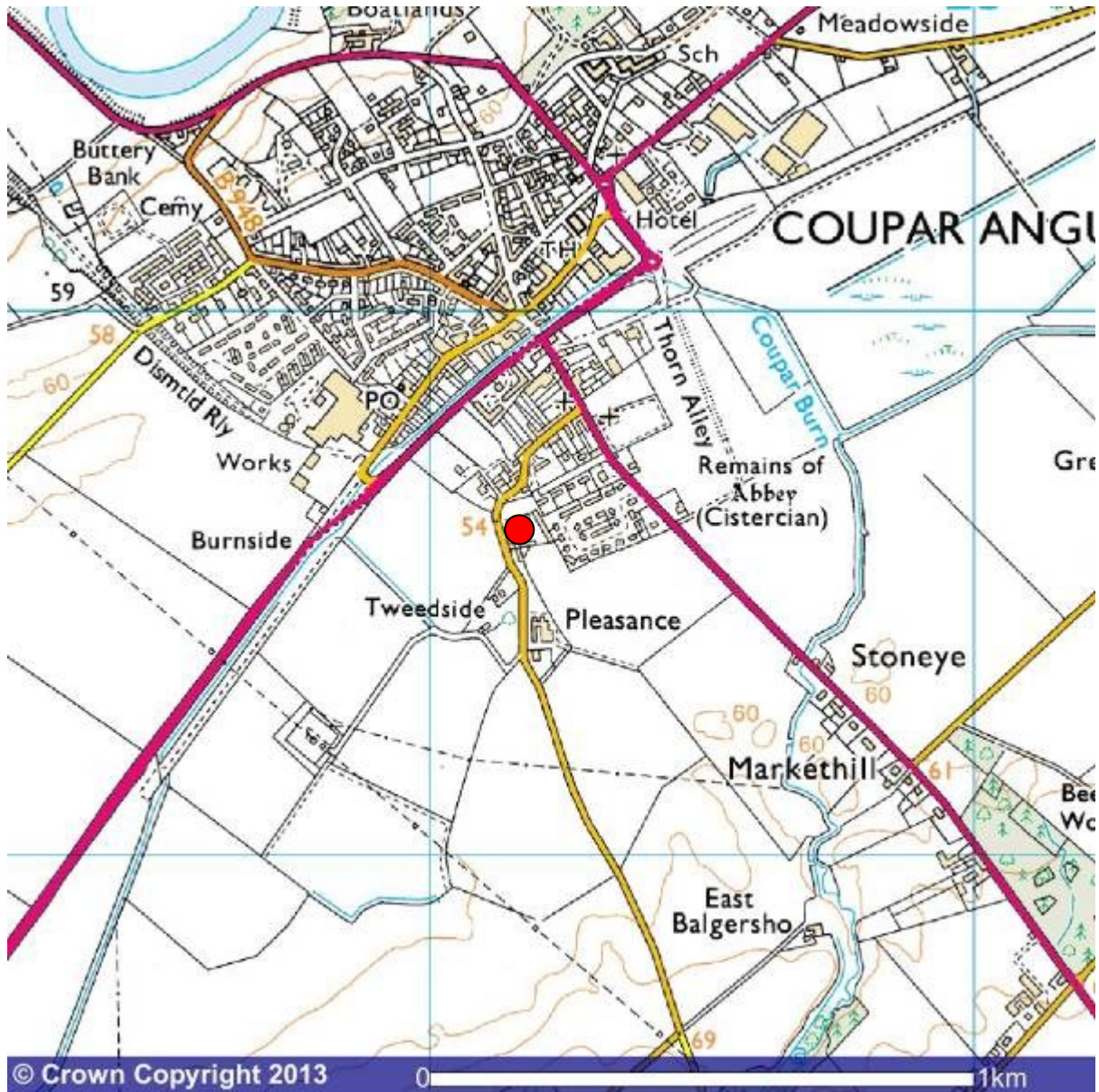


Illustration 1 Location of Pleasance Road tannery (red dot) (based on Ordnance Survey map Crown Copyright 2013. All Rights Reserved. Licence number 100049628)

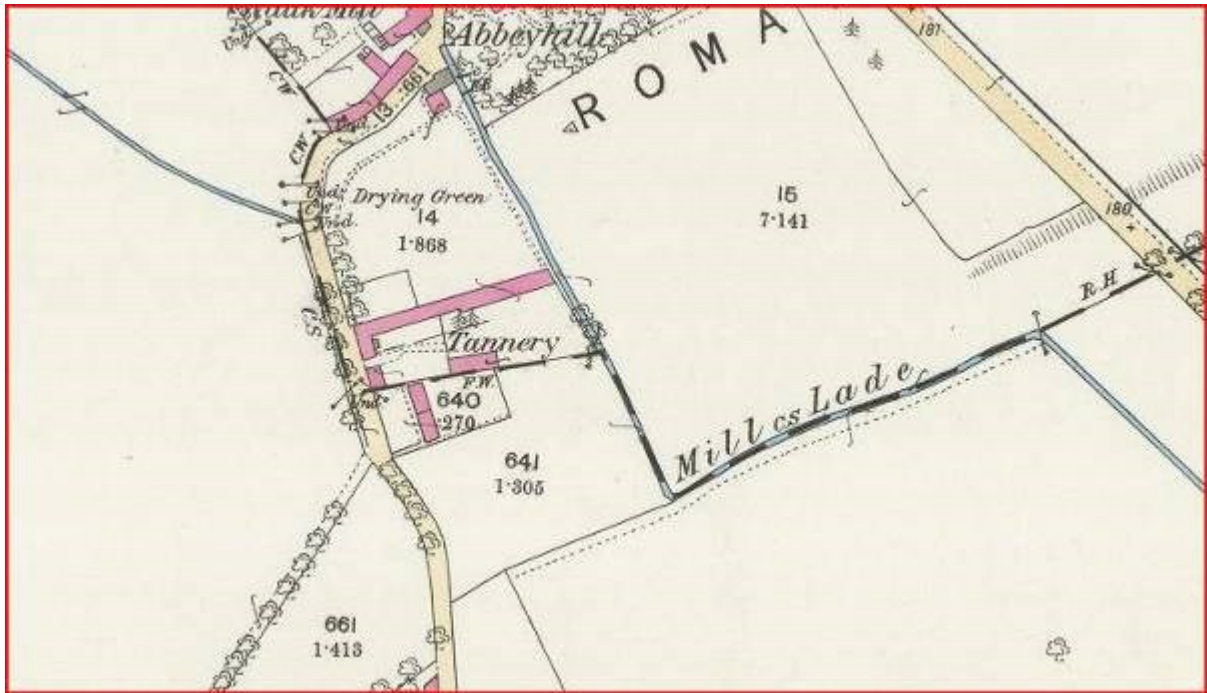


Illustration 2 Tannery as marked on First Edition Ordnance Survey map of 1864, note that main tannery building runs across entire site up to the Mill lade (now culverted) (©Trustees of National Library of Scotland)

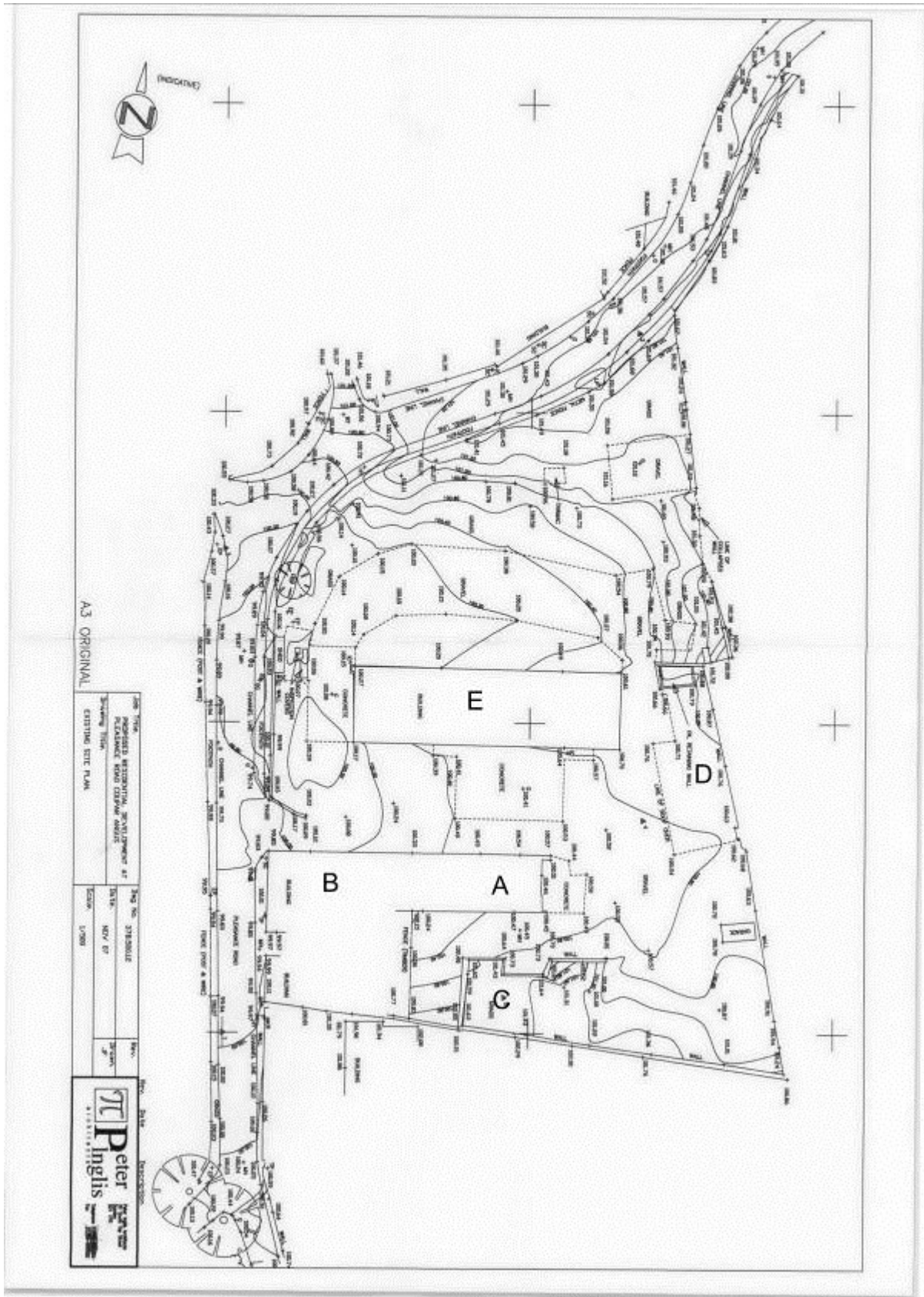


Illustration 3 Location of Buildings A, B, C, D and E (based on supplied topographic survey)



Illustration 4 general view of northern side of site showing Building E with top of Building A just visible looking south



Illustration 5 entrance into site from Pleasance Road looking east showing Buildings E (to left), D (at red arrow), A and B



Illustration 6 General view of southern sides of Buildings B and A and location of Building C (at red arrow) looking east



Illustration 7 General view of Building A and site from the south, Abbey Church marked by red arrow



Illustration 8 General view of Buildings B, C (red arrow) and E looking west





Illustration 9 northern elevation of Building A (louvers at top floor level marked with red arrows)



Illustration 10 eastern elevation of Building A



Illustration 11 southern elevation of Building A, red arrow indicates door in front of chute on first floor (see Illus 18)



Illustration 12 western elevation of Building A at junction with Building B



Illustration 13 Ground floor of Building A accessible from north side showing wooden stair to first floor



Illustration 14 western side of ground floor of Building A accessible from north



Illustration 15 Ground floor of Building A accessible from south



Illustration 16 Ground floor of Building A accessible from south showing office building





Illustration 17 eastern end of first floor level of Building A



Illustration 18 steps to top floor level on first floor of Building A, chute from top floor also visible



Illustration 19 western end of first floor of Building A electric motor and belt visible to right



Illustration 20 electric motor and drive belt on first floor of Building A looking north



Illustration 21 western end of top floor of Building A



Illustration 22 northern side of top floor of Building A showing four of red leaded glass louvers



Illustration 23 eastern end of top floor of Building A showing remaining red leaded glass louvers and fire extinguisher at red arrow



Illustration 24 north facing elevation of Building B looking west





Illustration 25 south facing elevation of Building B looking north west



Illustration 26 north facing elevation of Building C (Loading Bay) looking west



Illustration 27 west facing elevation of Building C looking south east



Illustration 28 View of sleeper built structure in Building C looking south east



Illustration 29 Detail of structure on top of loading bay (Building C) built of sleepers and loose bricks looking east



Illustration 30 Building D looking north



Illustration 31 south facing elevation of Building E looking north west



Illustration 32 western elevation of Building E looking south east





Illustration 33 northern elevation of Building E looking east



Illustration 34 eastern elevation of Building E looking north



Illustration 35 Former office buildings at eastern end of Building E



Illustration 36 interior of eastern end of Building E looking north



Illustration 37 interior of remainder of Building E looking west



Illustration 38 stone wall forming southern boundary around tannery buildings looking south east



Illustration 39 window in southern boundary wall looking south