

Further site evaluation and
site monitoring at
Land 70m SE of Main Street, Longforgan,
Perth and Kinross



Paving and sunken garden looking west



6th October 2014

Introduction

This programme of further archaeological evaluation and monitoring of the soil strip for the new house was carried out for Dr and Mrs A Reid to satisfy the outstanding archaeological condition on the planning consent for this development, as noted by Perth and Kinross Heritage Trust in the Terms of Reference to Planning Application 14/00035/FLL, dated 2nd June 2014. . This work was carried out by the author between Monday 29th September and Thursday 2nd October 2014 (site code LON02). Weather conditions were bright and sunny.

Archaeological Background (Illus 1 and 2)

The area proposed for development was considered to have archaeological potential. It is situated in close proximity to the centre of Longforgan, an historic settlement, dating back at least to the Pictish period, as evidenced by finds of a Pictish symbol stone and prehistoric souterrains. Further, whilst the development site is to the south of Main Street - and therefore slightly lower than the medieval / post-medieval settlement of Longforgan – it remains on the ‘inch’, an area of raised ground above the Carse. Aerial photography has revealed a possible prehistoric settlement on a similar contour to the west.

A site evaluation of June 2014 located an area of flat stones in one of the trenches and two linear features in another. No dating evidence was retrieved for any of these features and further evaluation of a larger area was recommended (Hall June 2014).

Further Site Evaluation (Illus 3-16)

Perth and Kinross Heritage Trust requested that a larger area was opened around the stone feature located in the evaluation. An area measuring 11m by 10m was opened by a mechanical excavator with a toothless ditching bucket and exposed features were then cleaned up and defined by hand.

Trench D (Illus 4 – 10)

Machining of the turf and topsoil exposed an area of stone paving (1001) and two walls (1003 and 1004) running South East down the hill. Paving 1001 appeared to have defined limits but there was no sign of any remaining fence or wall lines that it had respected. It did not run right up to the edge of wall 1003 but stopped 0.50m away. Walls 1003 and 1004 were cleaned up and defined and proved to be only one stone thick, the area between them was filled with homogenous dark grey brown silty clay with abundant charcoal (1002). A further wall 1007 was located running on a curved alignment between the southern ends of 1003 and 1004 and creating a closed end to the feature. The southern end of the defined structure was sectioned by hand to reveal a paved surface (1005) at a depth of 0.40m below the top of layer 1002. Further limited machine excavation 3m further north between 1003 and 1004 located a further patch of paving indicating that the whole area enclosed by the three walls was paved. A narrow stone lined feature (1006) was located at the southern end of 1004 running SW.

Monitoring of site strip (Illus 11 and 12)

The machine excavation of the footprint of the new house was monitored by the author on 1st and 2nd October. Walls 1003 and 1004 were seen to continue right up to the edge of the western house plot boundary and presumably the feature ends further up the hill in the garden. Stone feature 1006 was seen to continue right up to the southern boundary of the house plot. In the remainder of the house plot 0.80m of dark brown silty clay was removed to expose natural red sandy gravel and stone (natural). No further archaeological features were encountered.

Trenches E and F (Illus 13 and 14)

Two trenches measuring 1.80m by 4.20m were opened on the northern edge of the proposed building footprint. Trench E located the line of the modern sewer at a depth of 0.90m below dark brown silty clay. Trench F located a plastic water pipe running from the garden pond to the north at a depth of 0.60m below dark brown silty clay. Nothing of archaeological interest was located.

Finds (Illus 15 and 16)

Sherds of whiteware ceramic and a small sherd of porcelain were recovered from the surface of paving 1001 and from the soil filling the enclosed paved area 1002. Bottle glass and glass fragments from clear glass containers were also recovered from the surface of paving 1001. All of this material is of a date no earlier than the 19th century.

Interpretation

The paved stone area 1001 represents the area of flat stones located in Trench C of the site evaluation (202) and the other stonework in Trench C (203) was the eastern wall of the enclosed sunken paved area (1004). Both these features only produced sherds of whiteware ceramic, tile and glass which were all of 19th / early 20th century date. It seems likely that they are both associated with the former use of this part of the garden, the enclosed paved area was either a sunken garden or possibly a pond although there was no sign of any clay waterproofing on its paved base. The stone lined drainage feature (1006) was probably designed to feed rainwater away from the sunken area. The two linear features recovered in trench A of the evaluation (102 and 104) are probably the lines of drainage features running off the enclosed paved area. No archaeological features of an earlier date were located.

Acknowledgements

The author would like to thank Kenny of Dewar Plant for operating the machine to open the trench and carry out the site strip and Bob Gunn, site architect for his advice and interest in this piece of work.

Reference

Hall, D W 2014 'Archaeological Evaluation Land 70m SE of Main Street, Longforgan', report prepared for Dr and Mrs A Reid.

Illustration List

Illustration 1 Site Location (red circle) (based on Ordnance Survey map Crown Copyright 2012. All Rights Reserved. Licence number 100049628)

Illustration 2 Long Forgan as shown on General Roy's Military Survey of 1747-55 showing rig and furrow cultivation to South of the settlement (©Trustees of the National Library of Scotland)

Illustration 3 General view of site of proposed new house looking South prior to evaluation

Illustration 4 Location of excavated features in relation to stripped area for house plot and trenches E and F (based on supplied architect's survey)

Illustration 5 – Plan of excavated features as exposed in larger area of evaluation Scale 1:100

Illustration 6 – North facing section across enclosed paved area Scale 1:10

Illustration 7 General view of larger evaluation area looking South showing paving 1001 and walls 1003 and 1004 beginning to appear

Illustration 8 Paving 1001 fully exposed looking west

Illustration 9 Southern end of enclosed area of paving 1005, stone lined drain 1006 visible top right

Illustration 10 - Natural ground surface directly below paving 1005 in enclosed area

Illustration 11 - Line of drain 1006 from enclosed paved area visible in base of site strip (lines of arrows)

Illustration 12 - Continuation of enclosed paved area running to the North West beyond house plot

Illustration 13 – Trial trench E looking north towards 'The Cottage', line of sewer visible in foreground

Illustration 14 – Trial trench F looking west, water pipe from pond visible in foreground.

Illustration 15 - Decorated whiteware bodysherd, rim from glass bottle and sherds from glass containers from surface of paving 1001

Illustration 16 - Whiteware teacup handle and porcelain bodysherd from context 1002

Context List

Trench D

1000 – Dark Brown silty clay

1001 – Laid stone paving

1002 – Dark grey brown silty clay with abundant charcoal

1003 – Stone wall

1004 – Stone wall

1005 – Laid stone paving between 1003 and 1004

1006 – Stone drain running SW from end of 1004

1007 – Stone wall

Discovery & Excavation in Scotland Entry

LOCAL AUTHORITY:	Perth and Kinross
PROJECT TITLE/SITE NAME:	Land 70m SE of Main Street, Longforgan
PROJECT CODE:	LON02
PARISH:	Longforgan
NAME OF CONTRIBUTOR(S):	Derek Hall
NAME OF ORGANISATION:	Derek Hall, archaeologist and ceramic specialist
TYPE(S) OF PROJECT:	Archaeological Evaluation
NMRS NO(S):	N/A
SITE/MONUMENT TYPE(S):	N/A
SIGNIFICANT FINDS:	None
NGR (2 letters, 6 figures)	NO 3125 2997
START DATE	29 th September 2014
END DATE	2 nd October 2014
PREVIOUS WORK (incl. <i>DES</i> ref.)	None
MAIN (NARRATIVE) DESCRIPTION: (May include information from other fields)	A larger area was opened around the stone features that had been located in the evaluation. These were defined by hand and a paved stone area and a sunken enclosed paved feature with a drain running off its SW corner were located. All datable material recovered was off 19 th / early 20 th century date and included white earthenwares, tile and vessel glass. The features were interpreted as a sunken garden and paving that had been buried following the construction of a bowling green to the north in the 1920's.
PROPOSED FUTURE WORK:	None
SPONSOR OR FUNDING BODY:	Dr and Mrs A Reid
CAPTIONS FOR ILLUSTRS	N/A
ADDRESS OF MAIN CONTRIBUTOR:	34 Glenfarg Terrace, Perth, PH2 0AP
ARCHIVE LOCATION (intended)	NMRS
EMAIL ADDRESS:	Derek.hall1@blueyonder.co.uk

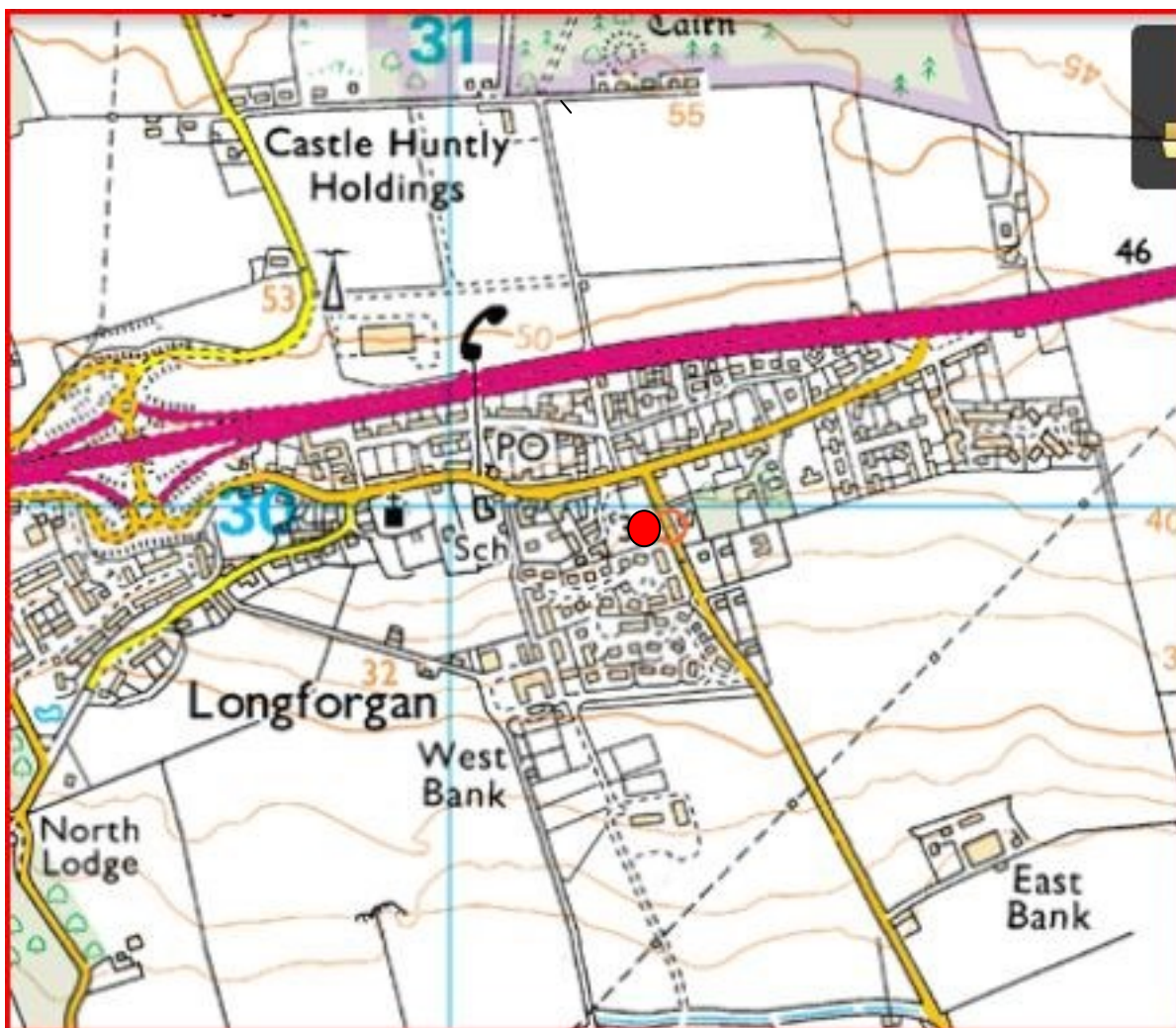


Illustration 1 Site Location (red circle) (based on Ordnance Survey map Crown Copyright 2014. All Rights Reserved. Licence number 100049628)



Illustration 2 Long Forgan as shown on General Roy's map of 1747-55 showing rig and furrow cultivation to South of settlement (©Trustees of the National Library)



Illustration 3 General view of site of proposed new house looking South prior to evaluation

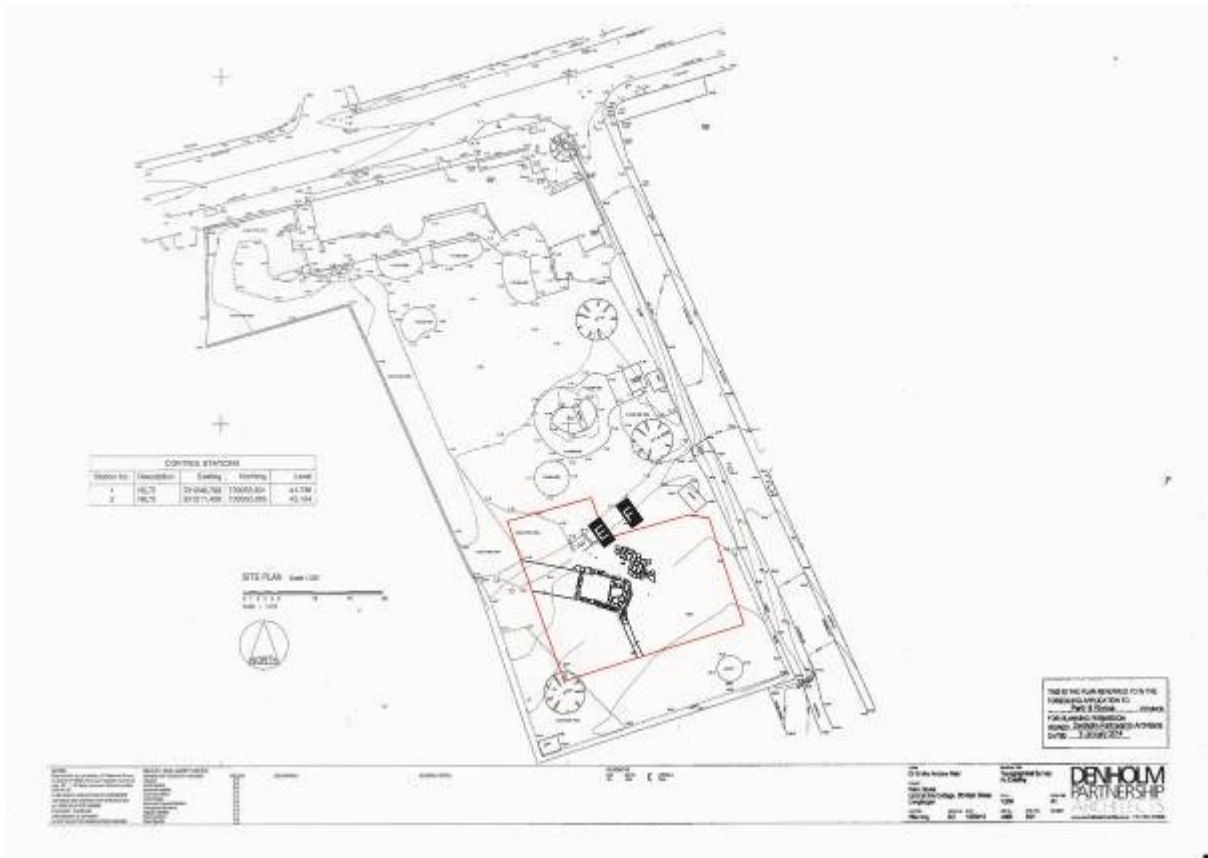


Illustration 4 Location of excavated features in relation to stripped area for house plot and trenches E and F (based on supplied architect's survey)

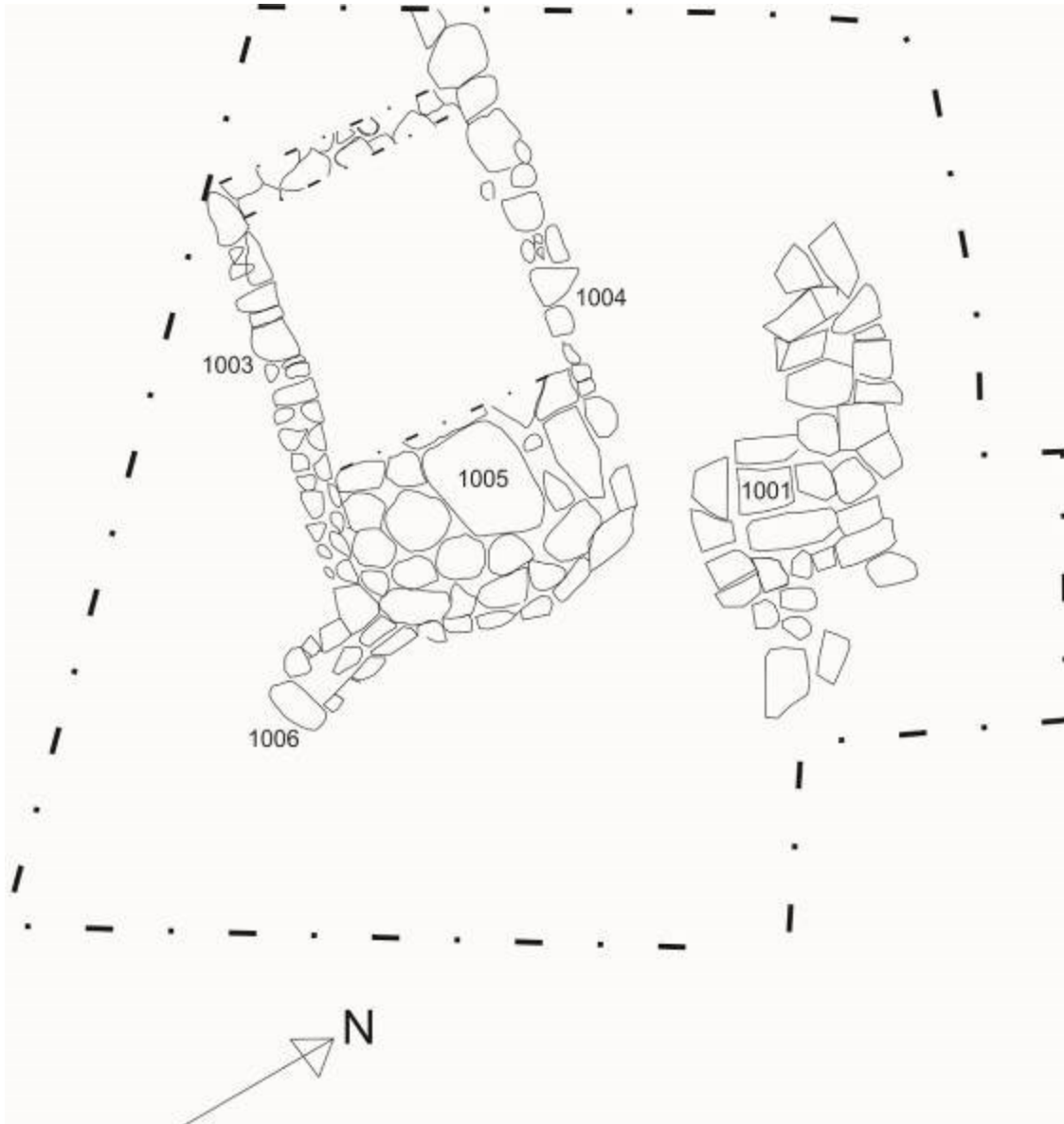


Illustration 5 – Plan of excavated features as exposed in larger area of evaluation Scale 1:100

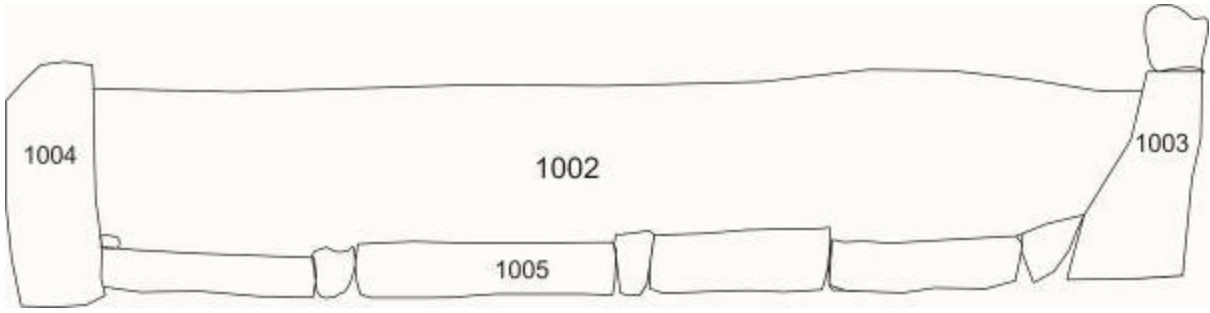


Illustration 6 – North facing section across enclosed paved area Scale 1:10



Illustration 7 General view of larger evaluation area looking East showing paving 1001 and walls 1003 and 1004 beginning to appear



Illustration 8 Paving 1001 fully exposed looking west



Illustration 9 Southern end of enclosed area of paving 1005, stone lined drain 1006 visible top right



Illustration 10 - Natural ground surface directly below paving 1005 in enclosed area



Illustration 11 - Line of drain 1006 from enclosed paved area visible in base of site strip (lines of arrows)



Illustration 12 - Continuation of enclosed paved area running to the North West beyond house plot



Illustration 13 – Trial trench E looking north towards ‘The Cottage’, line of sewer visible in foreground.



Illustration 14 – Trial trench F looking west, water pipe from pond visible in foreground.



Illustration 15 - Decorated whiteware bodysherd, rim from glass bottle and sherds from glass containers from surface of paving 1001

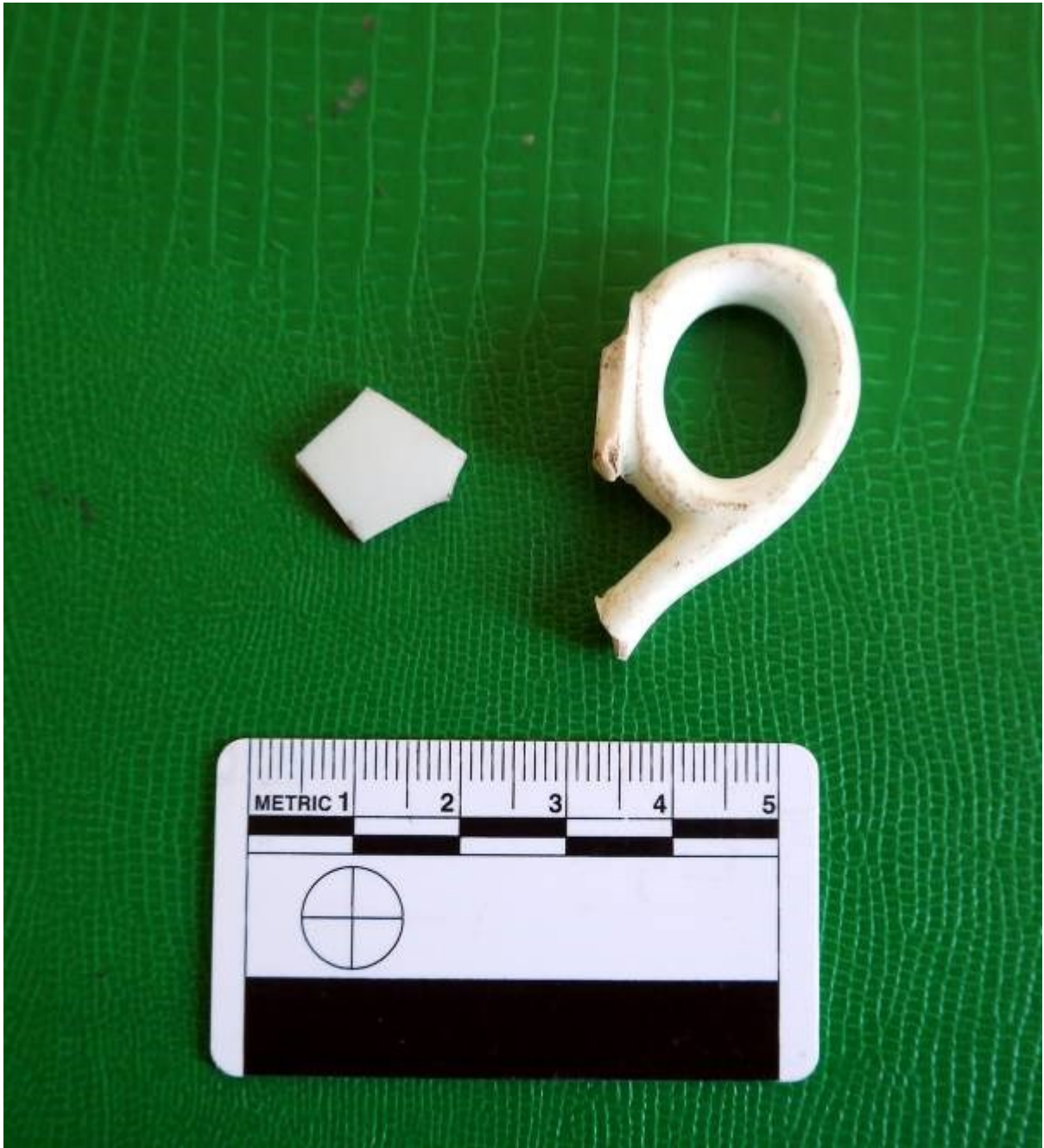


Illustration 16 - Whiteware teacup handle and porcelain body sherd from context 1002

