

Standing Building Survey

Former Airfield, Errol, Perth and Kinross



Memorial stone to Errol Airfield at entrance to Sunday market (erected by Airfield of Britain Conservation Trust).



3rd March 2015

Introduction

The planning consent for this development, Perth and Kinross Council Planning Applications 05/02418/IPM and 13/01823/FLM, dated 11th February 2015, included a planning condition that required a Level 2 standing building survey of the standing remains of any buildings formerly associated with Errol Airfield prior to the sites redevelopment. This standing building survey was carried out by the author on Thursday 26th February and Monday 2nd March 2015 (Site Code ERR01); weather conditions were bright, windy and cold.

Location (Illus 1)

The former airfield at Errol lies between the villages of Errol and Grange in the Carse of Gowrie at NO 2648 2431.

Historical Background (Illus 2 and 3)

The proposed development encompasses the western third of Errol Airfield which was opened on August 1 1942. It was a well-appointed airfield with three runways, six 'T1' hangars and 13 Blisters, as well as all the ancillary buildings required for an airfield of this size. Errol housed No. 305 Ferry Training Unit as a special air training /conversion/ unit for the Soviet crews receiving deliveries of Armstrong Whitworth Albemarles. This joint operation continued until April 1944, despite cancellation of Albemarle deliveries in September, 1943. On June 21 1945 the unit at Errol was disbanded and the airfield was placed in care and maintenance. In 1947 the Minister of Civil Aviation issued a preliminary list of airfields which were to be acquired and operated by the ministry. Errol was one of these but nothing came of this. In 1967 it was suggested that it be re-opened to replace Dundee Riverside but a local action committee was formed to combat non-agricultural development. Currently this site is owned by Morris Leslie and Co and is the home to regular Sunday markets, car boot sales, car auctions and light industrial activities.

Building Survey (Illus 4)

All surviving structures which could be linked with the airfield were photographically recorded and noted. Each building has been assigned a number and is discussed in turn.

Building 1 (Illus 6 to 8)

This brick built externally plastered building is one of the original airfield accommodation blocks and is now derelict. It has two doorways and three windows on its east facing elevation, small windows at gable height on its northern and southern elevations and three windows on its western elevation. It has a corrugated iron roof, 9 narrow buttresses on its western elevation and a porch and 6 buttresses on its eastern elevation.

Building 2 (Illus 9 to 11)

This large corrugated iron hangar currently houses Low's Horticultural supplies and is recorded by RCHAMS as being an original T1 type hangar from the 1940's. It has double sliding doors at its

northern and southern ends and an internal concrete floor. The external walls were reclad in the 1990's and are not the original 1940's ones (pers comm. Low's employee).

Building 3 (Illus 12 to 14)

This corrugated iron structure is a small hangar with sliding doors on its SE and NW sides. At each of its external corners are wheel hubs indicating that this intended to be a portable structure. There is an area of concrete paving on its SE side with a sub-circular shaped end. It has an internal concrete floor and is currently used for storing cars for auction.

Building 4 (Illus 15 to 17)

This small corrugated iron structure is another small hangar with sliding doors on its N and S ends. There are 7 windows in the side of the roof on either side. The building was locked at the time of the site visit so nothing was recorded of its internal features.

Building 5 (Illus 18 to 20)

This large corrugated iron building has sliding doors at its E and W ends and an internal concrete floor. It is in the location of a large hangar that is visible on aerial photographs of the airfield in 1943. It is currently used for housing cars due to be auctioned. A large roofed extension has been added on to its Northern side.

Building 6 (Illus 21 and 22)

This corrugated iron structure is a small hangar with sliding doors on its NE and SW sides. It has a concrete floor and is currently used for storing cars.

Building 7 (Illus 23 to 27)

This small brick built structure lies to the West of the main runway. It has a corrugated iron roof, a single door on its S side and two windows in its W wall which are now blocked with bricks. This was formerly part of a group of three buildings visible on aerial photographs of 1943, the other two structures have been demolished. Its original function is unknown.

Buildings 8 and 9 (Illus 28 to 33)

These two corrugated iron buildings are identical hangars aligned SE – NW with sliding doors at both ends. They lie at the south western end of the main SW – NE aligned runway. Building 8 has 9 windows in its roof, building 9 has none. Both structures were locked at the time of the site visit so nothing was recorded of their internal features.

Discussion and Recommendations

Of the nine buildings recorded five of them appear to be visible on aerial photographs of Errol airfield in the 1940's (1, 2, 3, 5 and 7). Buildings 4, 6, 8 and 9 are all of an aeronautical nature but probably relate to later use of the airfield.

The author feels that the photographic survey and written notes on the buildings on this site are an adequate record of the surviving elements of Errol Airfield at prior to their demolition and there would seem to be no need for any further work. However the final decision on that rests with Perth and Kinross Heritage Trust.

Acknowledgements

The author would like to thank the staff of Low's Horticultural supplies for letting him see photos of the hangar (Building 2) prior to its recladding.

Illustration List

Illustration 1 Location of former airfield at Errol (based on Ordnance Survey map Crown Copyright 2015. All Rights Reserved. Licence number 100049628)

Illustration 2 Luftwaffe aerial photograph of Errol Airfield in April 1943 looking North (©SCRAN)

Illustration 3 Aerial photograph of Errol airfield from 1944 looking West, red arrows indicate locations of surviving buildings recorded by this survey. (©SCRAN)

Illustration 4 Location of numbered Structures 1 to 9 and limit of proposed development in red looking North (based on supplied architect's survey)

Illustration 5 Building 1 looking North West

Illustration 6 Northern elevation of Building 1

Illustration 7 Western elevation of Building 1

Illustration 8 Southern elevation of Building 1

Illustration 9 Northern elevation of Building 2 looking south

Illustration 10 Building 2 prior to recladding in the 1990's (©Low's Horticultural Supplies)

Illustration 11 Southern elevation of Building 2

Illustration 12 North Eastern elevation of Building 3

Illustration 13 South Western elevation of Building 3

Illustration 14 Wheel hub visible at South Western corner of Building 3

Illustration 15 Southern elevation of Building 4

Illustration 16 Eastern elevation of Building 4 showing line of windows in roof

Illustration 17 Eastern elevation of Building 4

Illustration 18 Eastern elevation of Building 5

Illustration 19 Western elevation of Building 5

Illustration 20 Later lean to extension on Building 5

Illustration 21 Eastern elevation of Building 6

Illustration 22 Western elevation of Building 6

Illustration 23 General view of Building 7 looking west

Illustration 24 Southern elevation of Building 7

Illustration 25 Western elevation of Building 7

Illustration 26 Northern elevation of Building 7

Illustration 27 Eastern elevation of Building 7

Illustration 28 General view of Buildings 8 and 9 looking South East

Illustration 29 Eastern elevation of Building 8

Illustration 30 Eastern elevation of Building 8

Illustration 31 Western elevation of Building 9

Illustration 32 Northern elevation of Building 9

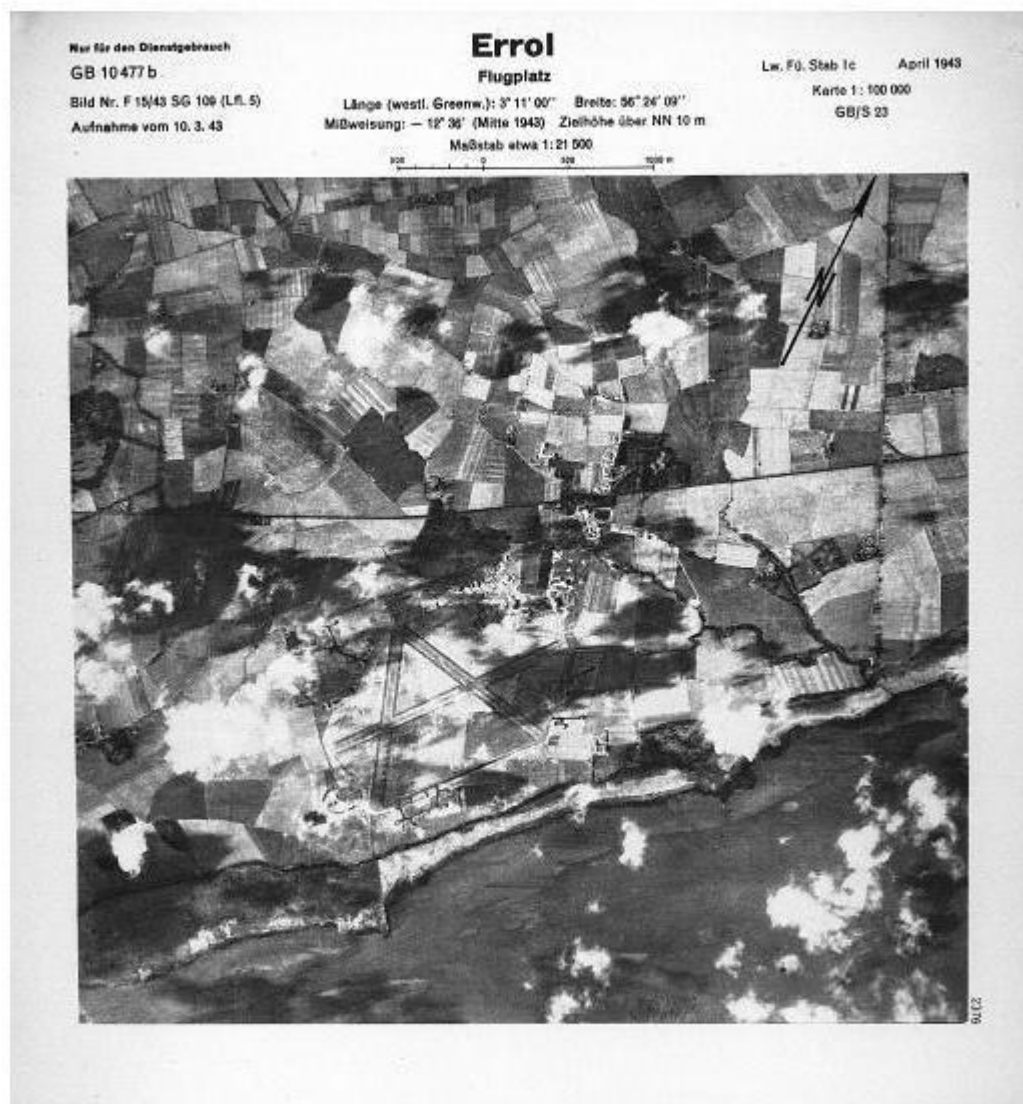
Illustration 33 Southern elevation of Building 9

Discovery & Excavation in Scotland Entry

LOCAL AUTHORITY:	Perth and Kinross Council
PROJECT TITLE/SITE NAME:	Errol Airfield
PROJECT CODE:	ERR01
PARISH:	Errol
NAME OF CONTRIBUTOR(S):	Derek Hall
NAME OF ORGANISATION:	Derek Hall, archaeologist and ceramic specialist
TYPE(S) OF PROJECT:	Standing Building Record
NMRS NO(S):	N/A
SITE/MONUMENT TYPE(S):	Former World War 2 airfield
SIGNIFICANT FINDS:	None
NGR (2 letters, 6 figures)	NO 2648 2431
START DATE	25 th February 2015
END DATE	2 nd March 2015
PREVIOUS WORK (incl. <i>DES</i> ref.)	None
MAIN (NARRATIVE) DESCRIPTION: (May include information from other fields)	A level 2 survey was carried out of the surviving buildings at Errol airfield prior to their demolition in advance of redevelopment. 7 hangars and two brick built structures were photographically recorded.
PROPOSED FUTURE WORK:	None
SPONSOR OR FUNDING BODY:	Mr M Leslie
CAPTIONS FOR ILLUSTRS	N/A
ADDRESS OF MAIN CONTRIBUTOR:	34 Glenfarg Terrace, Perth, PH2 0AP
ARCHIVE LOCATION (intended)	NMRS
EMAIL ADDRESS:	Derek.hall1@blueyonder.co.uk

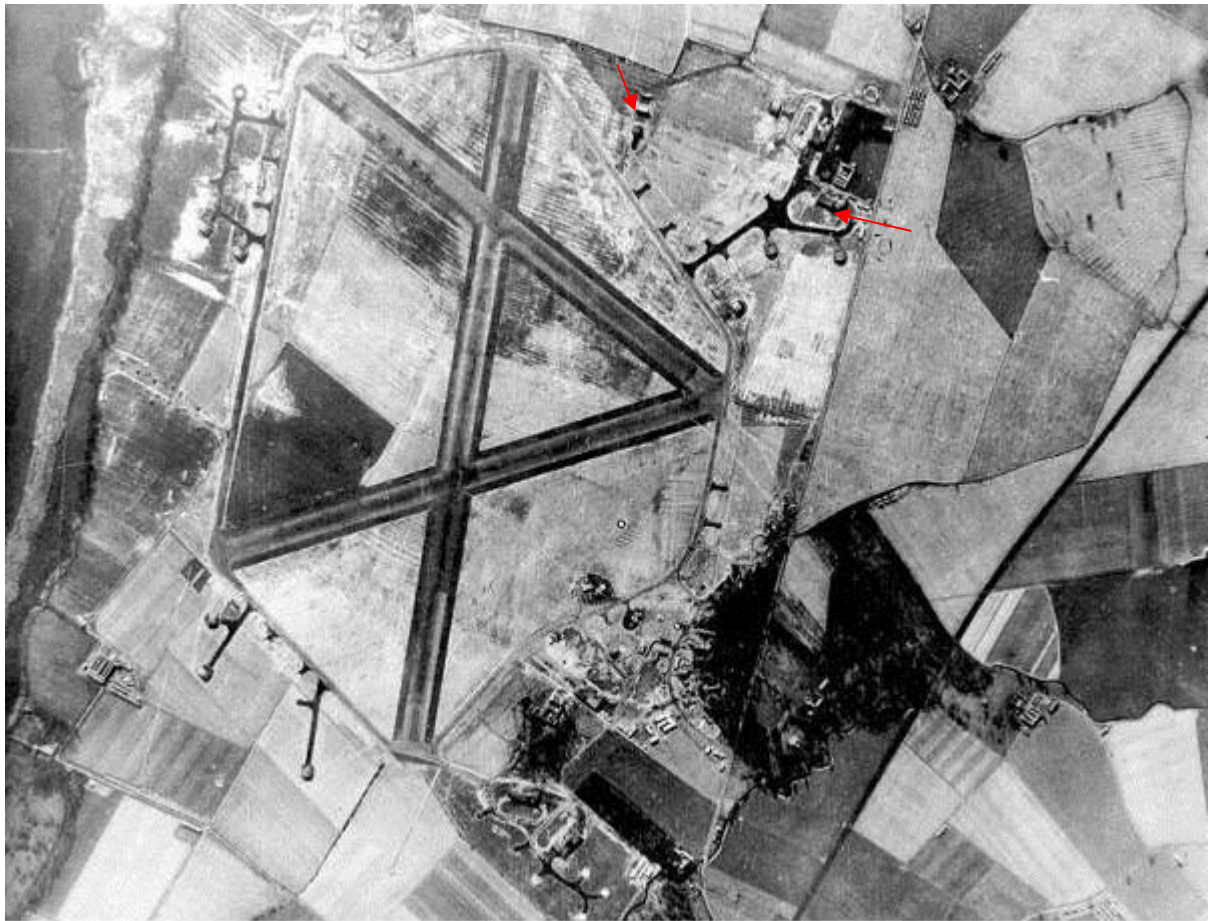


Illustration 1 Location of former airfield at Errol (red dot) (based on Ordnance Survey map Crown Copyright 2015. All Rights Reserved. Licence number 100049628)



Supplied for licensed use only by Scran. No Internet use. | 250215 | 00996825.jpg | www.scran.ac.uk/000-299-993-162-R

Illustration 2 Luftwaffe aerial photograph of Errol Airfield in April 1943 looking North (©SCRAN)



Supplied for licensed use only by Scran. No Internet use. | 250215 | 86120180.jpg | www.scran.ac.uk/001-000-406-117-R

Illustration 3 Aerial photograph of Errol airfield from 1944 looking West, red arrows indicate locations of surviving buildings recorded by this survey. (©SCRAN)

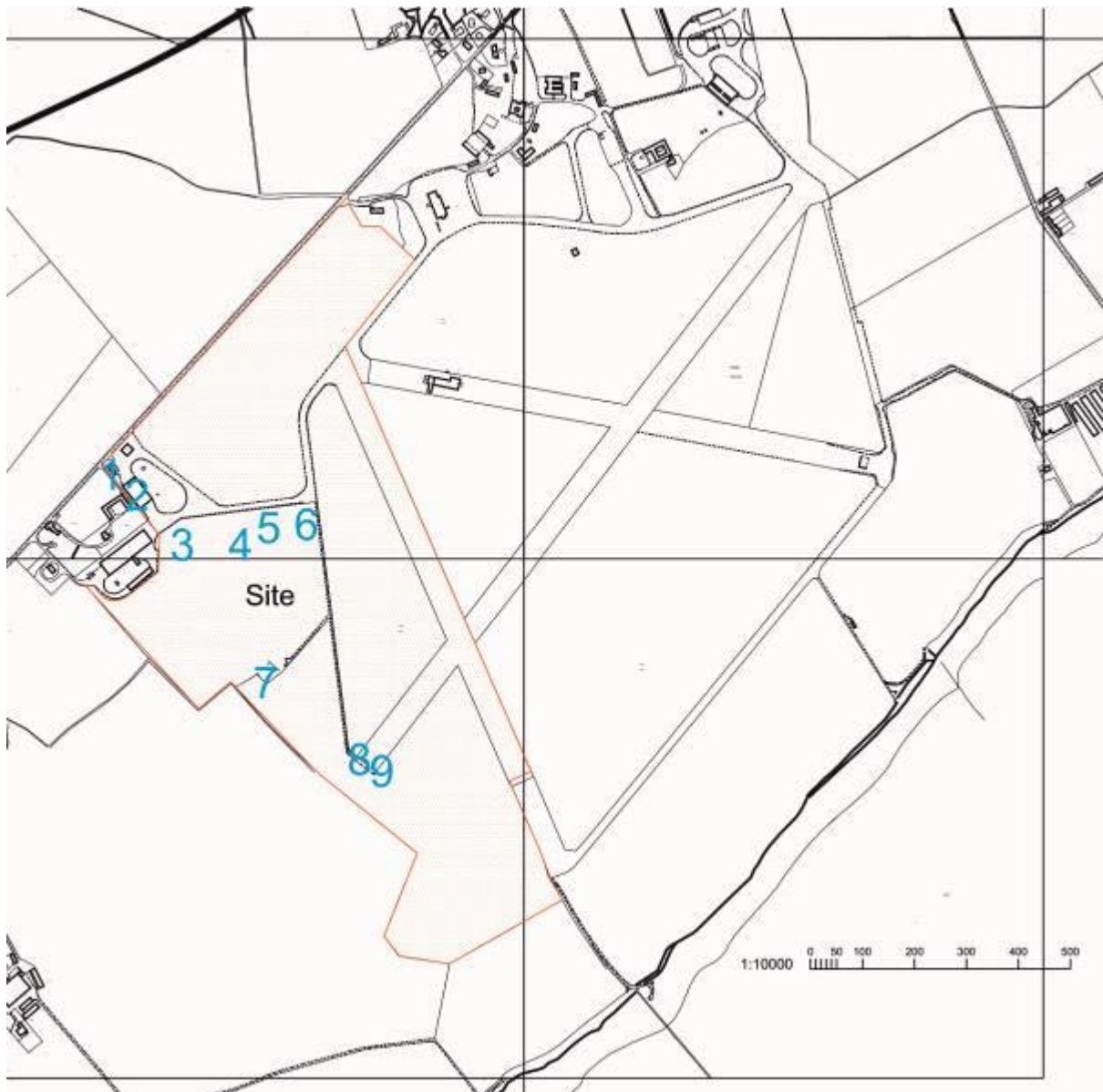


Illustration 4 Location of numbered Structures 1 to 9 and limit of proposed development in red looking North (based on supplied architect's survey)



Illustration 5 Building 1 looking north west



Illustration 6 Northern elevation of Building 1



Illustration 7 Western elevation of Building 1



Illustration 8 Southern elevation of Building 1



Illustration 9 Northern elevation of Building 2 looking south



Illustration 10 Building 2 prior to recladding in the 1990's (©Low's Horticultural Supplies)



Illustration 11 Southern elevation of Building 2



Illustration 12 North Eastern elevation of Building 3



Illustration 13 South Western elevation of Building 3



Illustration 14 Wheel hub visible at South Western corner of Building 3



Illustration 15 Southern elevation of Building 4



Illustration 16 Eastern elevation of Building 4 showing line of windows in roof



Illustration 17 Eastern elevation of Building 4



Illustration 18 Eastern elevation of Building 5



Illustration 19 Western elevation of Building 5



Illustration 20 Roofed extension on Northern side of Building 5



Illustration 21 Eastern elevation of Building 6



Illustration 22 Western elevation of Building 6



Illustration 23 General view of Building 7 looking west



Illustration 24 Southern elevation of Building 7



Illustration 25 Western elevation of Building 7



Illustration 26 Northern elevation of Building 7



Illustration 27 Eastern elevation of Building 7



Illustration 28 General view of Buildings 8 and 9 looking South East



Illustration 29 Eastern elevation of Building 8



Illustration 30 Eastern elevation of Building 8



Illustration 31 Western elevation of Building 9



Illustration 32 Northern elevation of Building 9



Illustration 33 Southern elevation of Building 9