

Standing Building Survey
Shannoch Farmhouse, Logiealmond,
Perth and Kinross



Shannoch Farmhouse and Steadings looking West (mill building in foreground)



20th September 2018

Introduction

The planning consent for this development (Perth and Kinross Council Planning Application 18/00916/FLL dated 28th May 2018) included an archaeological condition specifying the need for a standing building record of the farmhouse using ALGAO Scotland's Historic Building Recording Guidance (2013). This standing building survey was carried out by the author on Thursday 13th September 2018 (Site Code SHA01), weather conditions were slightly overcast.

Historical Background (Illus 2-4)

The farmhouse at Shannoch is a good example of a one and half storey Estate farmhouse of the mid-19th century formerly belonging to the Earls of Mansfield. From a limited Cartographic study by the author a settlement at Shannoch is shown both on Roy's map of 1747-1755 and Stobie's map of 1783 (Illus 2 and 3). The Census record of 1841 refers to the settlement of Shannoch and lists 18 people as living there, 12 of these are members of the Wylie family (Scotlands People 1841 Census). In the 1840's the Logiealmond Estate was sold to the Earl's of Mansfield and Shannoch Farm is first mapped on the First Edition Ordnance Survey map of 1866 (Illus 4), this map shows the farmhouse in its original ground plan. The Census record of 1851 lists Shannoch Farm as being occupied by James Wylie (farmer of 150 acres), his wife Alison, their two children and 3 servants (Scotlands People 1851 Census). Interestingly the 1855 Ordnance Survey name book describes Shannoch as 'a large farm steading and a few cot houses...The farm steading and dwelling house are both two storeys in height, slated, and in good repair; cot houses one storey, thatched and in bad repair, all the property of the Earl of Mansfield, Scone Palace' (OS Names books Volume 58 Scotland's People). In the 1861 Census Easter and Wester Shannoch are listed with Alexander Wylie, his sister and niece living in Easter Shannoch and James Wylie, his wife Alison, his daughter Jessie and 2 servants in Wester Shannoch (Scotlands People 1861 Census). Easter Shannoch is presumably the building shown on the 1862 OS map on the North side of the track that leads to Shannoch. In 1871 it is Shannoch only that is recorded with James and Alison Wylie living there accompanied by their daughter and 2 servants (Scotlands People 1871 Census). In the Valuation Rolls of 1875 the tenants of Shannoch are listed as being the heirs of James Wylie (Scotlands People 1875 Valuation Rolls). By 1881 James Robertson, his wife, father, their five children and a female servant are living in Shannoch Farm (Scotlands People 1881 Census). At the start of the new century in 1901 Shannoch is occupied by William Ronald's his wife and mother (Scotlands People 1901 Census). In the most recent available Census of 1911, William Ronald and his wife are still living at Shannoch (Scotlands People 1911 Census).

Description of building (note that letters in brackets refer to rooms as marked on Illustration 5)

Location (Illus 1 and 6)

Shannoch Farm lies on elevated ground to the West of the road to Little Glenshee. It is reached by a rough track that crosses the course of a burn. There is an associated group of farm steading buildings (including a mill) to the North of the farmhouse.

Farmhouse

This is a one and a half storey building on an East-West axis with a modern wooden porch added on its Northern side and a small 'bothy' and wooden 'shed' added to its Eastern gable end. Unless specified all the walls are built of mortar bonded shaped sandstone blocks.

Roof

The pitched roof of the farmhouse is slated with brick chimneys at its Eastern and Western ends. The gutters and down pipes are all cast iron, there are wooden flashings painted purple at either roof end.

Northern Elevation (Illus 7 and 8)

This elevation has a wooden shed (coal store) (13) at its Eastern end, this has a door leading into it. There is then a single window for the 'bothy' (14) which has been added to the original buildings Eastern gable, this structure has been built against the original Eastern external face of the farmhouse and the earlier shaped ashlar quoins on the corner are still visible. There is a brick built chimney in the 'bothy' roof. There is then a window for the farmhouse kitchen and then a modern wooden porch with a doorway. The porch covers a window for room 7 in the farmhouse. The remainder of this elevation is blank with shaped ashlar quoins at its western end corner.

Western Elevation (Illus 9)

This elevation is the Western gable end of the farmhouse and is plain with shaped ashlar quoins at its Northern and Southern corners. There is a blocked window with a rounded arch at first floor level and a brick-built chimney at the point of the gable. The wooden flashings at the roof line are painted purple.

Southern Elevation (Illus 10)

This elevation has shaped ashlar quoins at its Western and Eastern ends and a central pediment with a triangular gable. The pediment contains the original double entrance doors into the farmhouse from the South and has a window with a rounded arch. There are windows either side of the pediment for the ground floor rooms of the farmhouse and gable windows in the roof line for the rooms on the upper floor. There is a small greenhouse/conservatory covering the doorway into the farmhouse.

Eastern Elevation (Illus 11)

This elevation contains the gable end of the original farmhouse which has a blocked window with a rounded arch at first floor level. This original gable end has a brick-built chimney at its point and purple painted wooden flashings at the roof line. Built against this gable end are the brick-built rooms which contain the ground floor toilet and bathroom (5), both these rooms have windows in this elevation. The 'bothy' (14) has been built against the northern section of this elevation and the wooden shed (13) is built against the 'bothy's gable end.

Internal Rooms

Farmhouse

Porch (1) (Illus 12)

This is built of vertical wooden planks and is entered by a door from the north. It has a concrete floor.

Kitchen (2) (Illus 13)

This contains modern kitchen units and is decorated with wallpaper on wooden panels. There is linoleum on the concrete floor.

Lounge (3) (Illus 14 and 15)

This room has a fireplace for a wood burning stove in its Eastern wall and is decorated with wallpaper on wooden panels. An exposed section of the original stone wall shows that the wooden panels are fixed to a wooden lath frame that is attached to the stone wall. There is a carpet on the floor.

Passage (4) (Illus 16)

This leads to the toilet and kitchen which have been added to this side of the farmhouse and there is a step down to this level from the lounge.

Toilet and Bathroom (5) (Illus 17)

Both these rooms are wood panelled on both walls and ceiling and have concrete floors.

Lobby (6) (Illus 18)

This contains the original doorway into the farmhouse from the South and its walls are made up of wooden panels on plaster on the stone wall faces. The stairs to the upper floor are accessed from here.

Small room (7) (Illus 19)

This small room has a window in its Northern wall which looks out into the porch and is decorated with wallpaper on wooden panels. There is a wooden shelf/seat below the window.

Second Lounge (8) (Illus 20 and 21)

This room has a wooden floor and is decorated with wall paper on wooden panels. There is a cupboard in its West wall and a window with a wooden shelf/seat in its South wall.

Upper Floor

Stairs (Illus 22 and 23)

This staircase has an ornate wooden central pillar, a wooden banister and a wooden balustrade at first floor level.

Upper Lobby (9) (Illus 24)

This is carpeted and has a window with a rounded arch in its South wall. There is a modern wooden chest below the window.

Bedroom (10) (Illus 25 and 26)

This has a wooden floor, a gable window in its Southern wall and a blocked fireplace in its East wall. It is decorated with wallpaper on wooden panels. The roof lines in this room are slightly pitched.

Bedroom (11) (Illus 27 and 28)

This room has a wooden floor, a gable window to the South and is decorated with wallpaper on wooden panels. The roof lines in this room are slightly pitched.

Small Bedroom (12) (Illus 29)

This room has a small skylight in its northern wall and has a carpet on its floor. It is decorated with wallpaper on wooden panels.

Wooden shed (coal store) (13) (Illus 30)

This is built of vertical wooden planks and externally painted red/purple. It has a concrete floor and was last used as a coal store. The doorway into the 'Bothy' is accessed from this shed.

Bothy (14) (Illus 31-33)

This is a single living room with a wooden floor and a large fireplace in its Western wall. The walls are decorated with plaster on wooden lath and the ceiling is of a similar construction. The fireplace has a wooden mantelpiece and is built of large vertical shaped stones, it contains the remains of a decorated cast iron fireplace/range. A piece of graffiti saying 'Archie' is painted across the top of the fireplace.

Observations and Phasing of building (Illus 34)

The original ground plan of the farmhouse appears to have been L-shaped as is shown on the First Edition Ordnance Survey map (Illus 4). The 'bothy' (14) appears to have been added next then followed by the shed (13), toilet and bathroom (4 and 5)) these additions have created the more regular modern ground plan. The first-floor windows in the Eastern and Western gables and Southern pediment of the farmhouse all have round arches at their heads something that may be regarded as a style of the Estate.

Recommendations

The author feels that the photographic survey and written notes on the building are an adequate record of Shannoch Farmhouse prior to its redevelopment and there would seem to be no need for any further work. However, the final decision on that rests with Perth and Kinross Heritage Trust.

References

Cartographic Sources(<http://www.nls.uk/maps>)

Roy, William 1747-55 Military Survey of Scotland

Stobie, James 1783 A large scale map of Perth and Clackmannan

Ordnance Survey Maps - Six-inch 1st edition, Scotland, 1843-1882

Online

<https://www.scotlandspeople.gov.uk/>

Scottish Census 1841, 1851, 1871, 1891, 1901 Scotland's People

Scottish Valuation Rolls 1875

Illustration List

Illustration 1-Site location (red circle) (based on Ordnance Survey map Crown Copyright 2012. All Rights Reserved. Licence number 100049628)

Illustration 2-Shannoch as marked on William Roy's map of 1747-55 (red arrow) (© Trustees of National Library of Scotland)

Illustration 3-Shannoch (red arrow) as marked on Stobies map of 1783 (© Trustees of National Library of Scotland)

Illustration 4- Shannoch Farm as marked on the First Edition Ordnance Survey map of 1862, red arrow indicates what maybe Easter Shannoch (as referred to in 1861 Census) (© Trustees of National Library of Scotland)

Illustration 5-Ground and upper floor plans of Shannoch Farmhouse (numbers refer to text descriptions of rooms)

Illustration 6-Shannoch Farmhouse and steadings looking West

Illustration 7-Northern elevation of farmhouse looking South

Illustration 8-Detail of Northern elevation showing junction of 'bothy' with original Eastern end of farmhouse, shaped ashlar quoins visible (red arrow)

Illustration 9-Western elevation of farmhouse looking North East showing blocked arched window at first floor level (red arrow).

Illustration 10-Southern elevation of farmhouse showing central pediment with round arched window

Illustration 11-Eastern elevation of farmhouse looking West, blocked window with round headed arch visible behind later toilet/bathroom block (red arrow).

Illustration 12-Modern wooden porch (1) attached to Northern elevation of farmhouse looking East

Illustration 13-Kitchen (2) in farmhouse looking North

Illustration 14 Fireplace in lounge (3) with wooden lath and plaster exposed in wall

Illustration 15-Lounge (3) looking West showing enclosed stairwell to first floor

Illustration 16-Wood lined passage to toilet (4) looking East

Illustration 17-Interior of wood lined bathroom (5) looking North

Illustration 18-Original entrance lobby to farmhouse (6) looking West

Illustration 19-Interior of small room (7) with window looking out into porch

Illustration 20-Interior of second lounge with wooden floor (8) looking North

Illustration 21-Interior of second lounge looking South (8), wall cupboard visible to right

Illustration 22-Stairs up to first floor level showing central wooden pillar

Illustration 23-Wooden balustrade at the top of the stairs

Illustration 24-Interior of window in pediment looking South from upper lobby (9)

Illustration 25- Blocked fireplace in upstairs bedroom (10) looking North East

Illustration 26- Interior of gable window in upstairs bedroom (10) looking South

Illustration 27- Interior of upstairs bedroom (11) looking North East

Illustration 28-Interior of gable window in upstairs bedroom (11) looking South

Illustration 29 -Interior of small upstairs bedroom (12) looking North

Illustration 30- Interior view of wooden extension/coal store (13) looking South doorway into 'bothy' (14) visible to right of scale

Illustration 31-General view of interior of 'bothy' (14) looking West

Illustration 32-Interior view of 'bothy' window looking North

Illustration 33 -Detail of fireplace in 'bothy' (14) showing decorated cast iron grate and graffiti

Illustration 34- Suggested phasing of building, red area 1 indicates first phase with blue area 2 as first addition to ground plan. Further modern extensions to ground plan are left uncoloured.

Discovery & Excavation in Scotland Entry

LOCAL AUTHORITY:	Perth and Kinross
PROJECT TITLE/SITE NAME:	Shannoch Farmhouse, Logiealmond
PROJECT CODE:	SHA01
PARISH:	Monzie
NAME OF CONTRIBUTOR(S):	Derek Hall
NAME OF ORGANISATION:	Derek Hall, archaeologist and ceramic specialist
TYPE(S) OF PROJECT:	Standing Building Record
NMRS NO(S):	N/A
SITE/MONUMENT TYPE(S):	None
SIGNIFICANT FINDS:	None
NGR (2 letters, 6 figures)	NS
START DATE	13 th September 2018
END DATE	13 th September 2018
PREVIOUS WORK (incl. <i>DES</i> ref.)	None
MAIN (NARRATIVE) DESCRIPTION: (May include information from other fields)	A photographic survey was carried out of the 19 th century farmhouse at Shannoch, Perth and Kinross. Written descriptions were made of external elevations and internal rooms and a suggested phasing of the building was made.
PROPOSED FUTURE WORK:	None
SPONSOR OR FUNDING BODY:	Mr and Mrs David Legat
CAPTIONS FOR ILLUSTRS	N/A
ADDRESS OF MAIN CONTRIBUTOR:	34 Glenfarg Terrace, Perth, PH2 0AP
ARCHIVE LOCATION (intended)	NMRS
EMAIL ADDRESS:	Derek.hall1@blueyonder.co.uk



Illustration 1 Site location (red circle) (based on Ordnance Survey map 1:50000 Crown Copyright 2012. All Rights Reserved. Licence number 100049628)

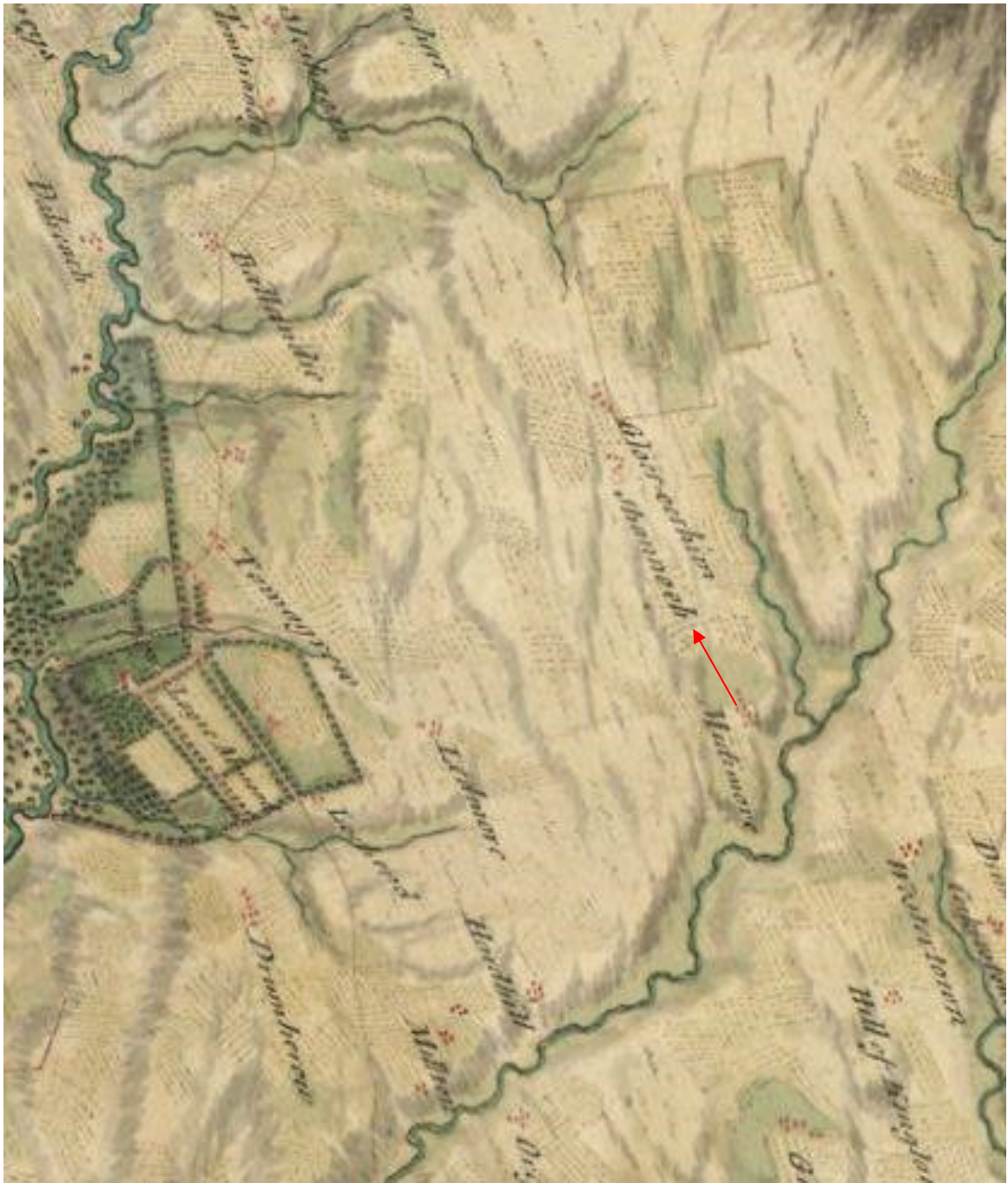


Illustration 2 Shannoch as marked on William Roy's map of 1747-55 (red arrow) (© Trustees of National Library of Scotland)

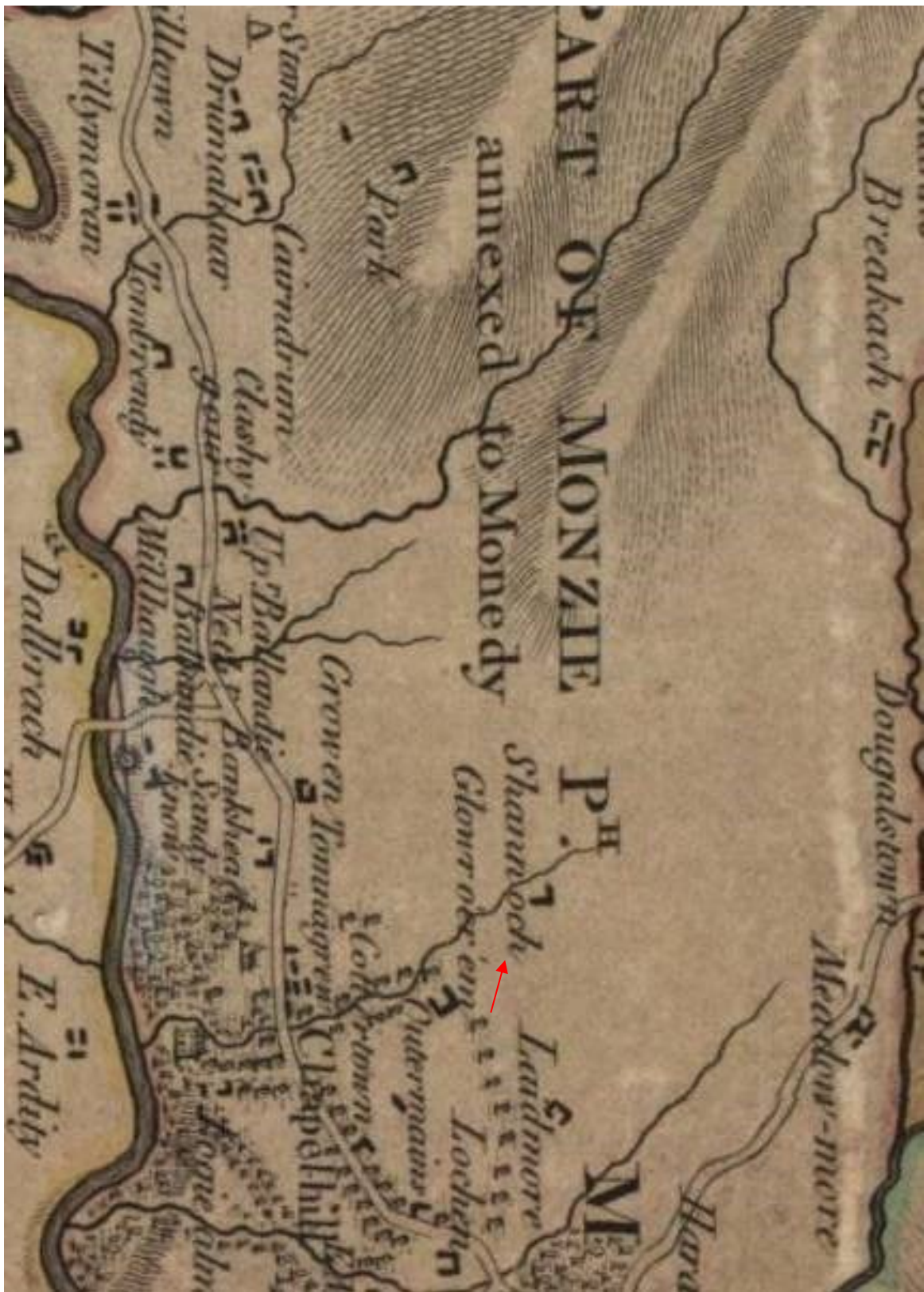


Illustration 3. Shannoch (red arrow) as marked on Stobies map of 1783 (© Trustees of National Library of Scotland)

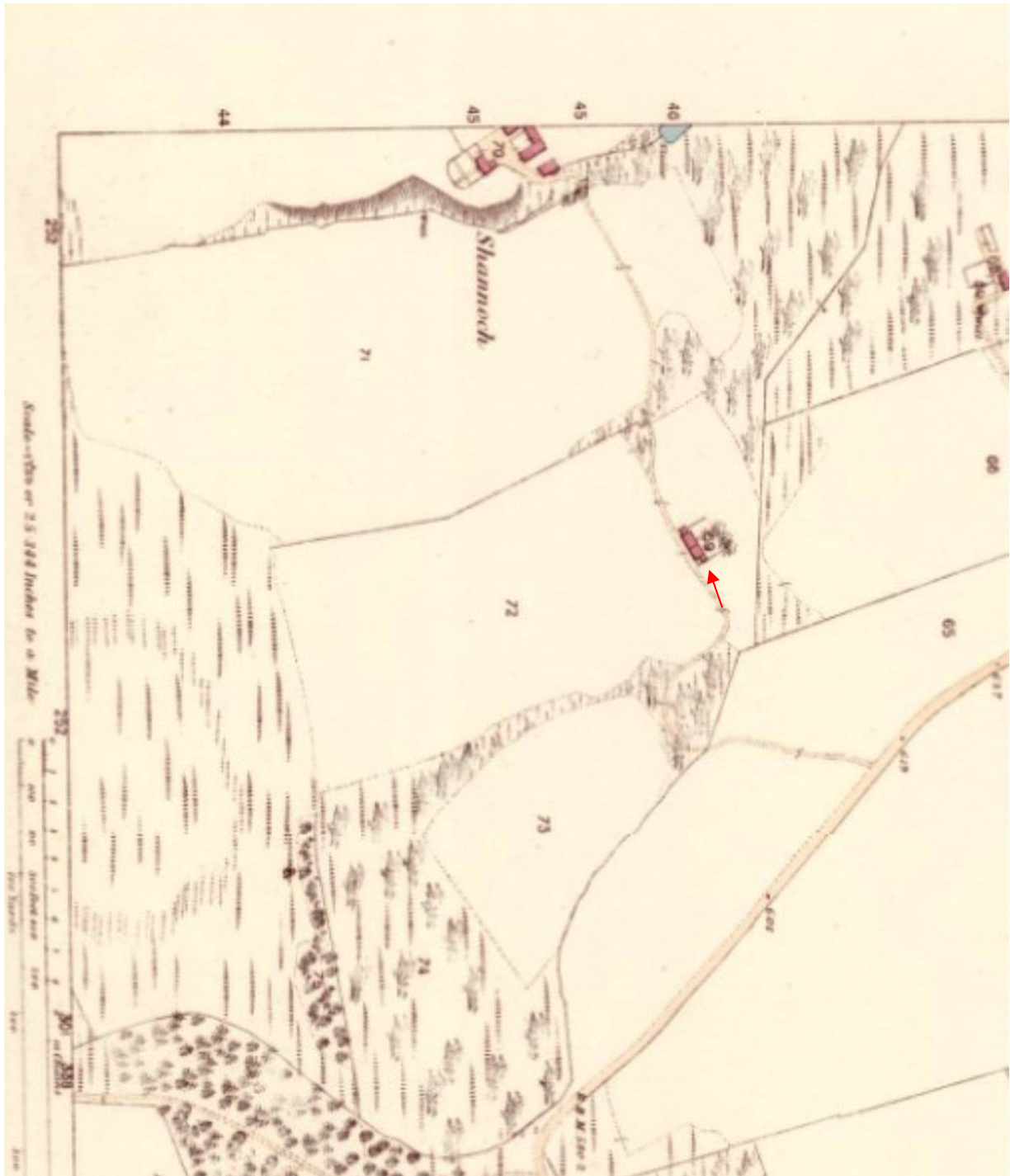


Illustration 4- Shannoch Farm as marked on the First Edition Ordnance Survey map of 1866, red arrow indicates what maybe Easter Shannoch (as referred to in 1861 Census) (© Trustees of National Library of Scotland)

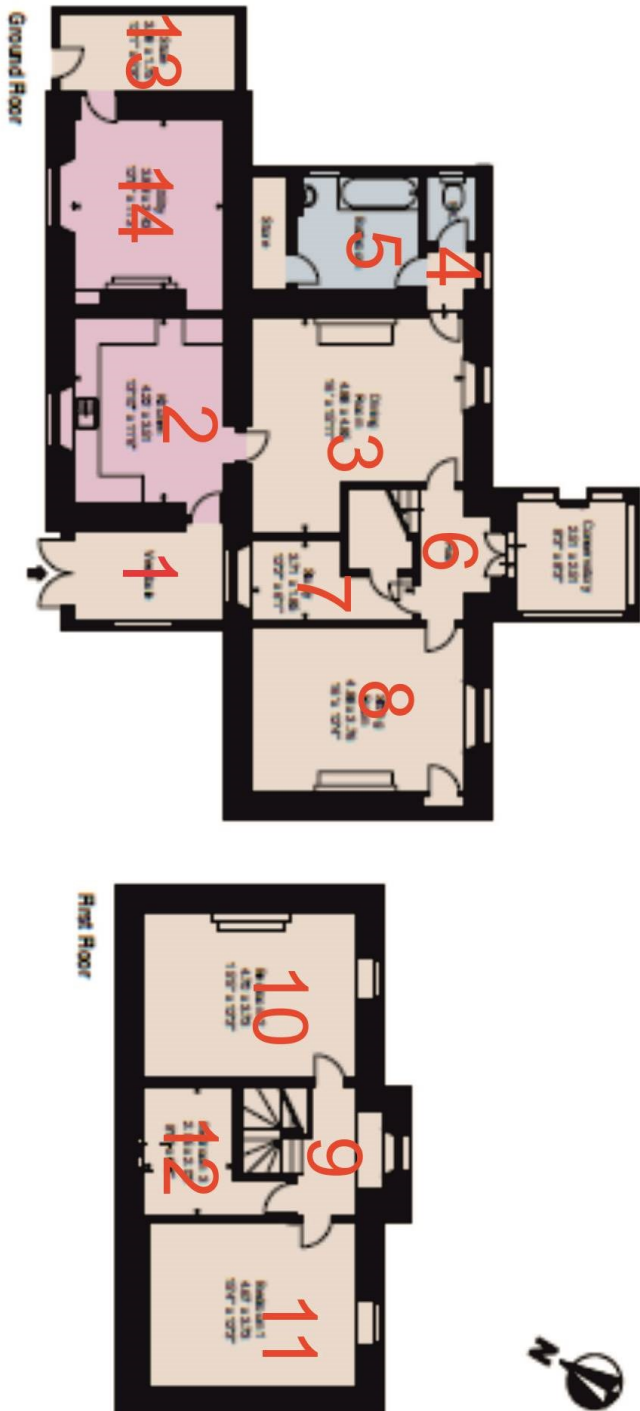


Illustration 5 Ground and upper floor plans of Shannoch Farmhouse (numbers refer to text descriptions of rooms) (based on Saville’s sale plans)



Illustration 6-Shannoch Farmhouse and steadings looking West (mill building to left of telegraph poles)



Illustration 7-Northern elevation of farmhouse looking South



Illustration 8-Detail of Northern elevation showing junction of 'bothy' with original Eastern end of farmhouse, shaped ashlar quoins visible (red arrow)



Illustration 9-Western elevation of farmhouse looking North East showing blocked arched window at first floor level (red arrow).



Illustration 10-Southern elevation of farmhouse showing central pediment with round arched window



Illustration 11-Eastern elevation of farmhouse looking West, blocked window with round headed arch visible behind later toilet/bathroom block (red arrow).



Illustration 12-Modern wooden porch (1) attached to Northern elevation of farmhouse looking East



Illustration 13-Kitchen (2) in farmhouse looking North



Illustration 14 Fireplace in lounge (3) with wooden lath and plaster exposed in wall



Illustration 15-Lounge (3) looking West showing enclosed stairwell to first floor



Illustration 16-Wood lined passage (4) to toilet looking East



Illustration 17-Interior of wood lined bathroom (5) looking North



Illustration 18-Original entrance lobby to farmhouse (6) looking West



Illustration 19-Interior of small room (7) with window looking out into porch



Illustration 20-Interior of second lounge (8) with wooden floor looking North



Illustration 21-Interior of second lounge (8) looking South, wall cupboard visible to right



Illustration 22-Stairs up to first floor level showing central wooden pillar



Illustration 23-Wooden balustrade at the top of the stairs



Illustration 24-Interior of window in pediment looking South from upper lobby (9)



Illustration 25- Blocked fireplace in upstairs bedroom (10) looking North East



Illustration 26- Interior of gable window in upstairs bedroom (10) looking South



Illustration 27- Interior of upstairs bedroom (11) looking North East



Illustration 28-Interior of gable window in upstairs bedroom (11) looking South



Illustration 29 -Interior of small upstairs bedroom (12) looking North



Illustration 30- Interior view of wooden extension/coal store (13) looking South doorway into 'bothy' (14) visible to right of scale



Illustration 31-General view of interior of 'bothy' (14) looking West



Illustration 32-Interior view of 'bothy' window looking North



Illustration 33 -Detail of fireplace in 'bothy' (14) showing decorated cast iron grate and graffiti

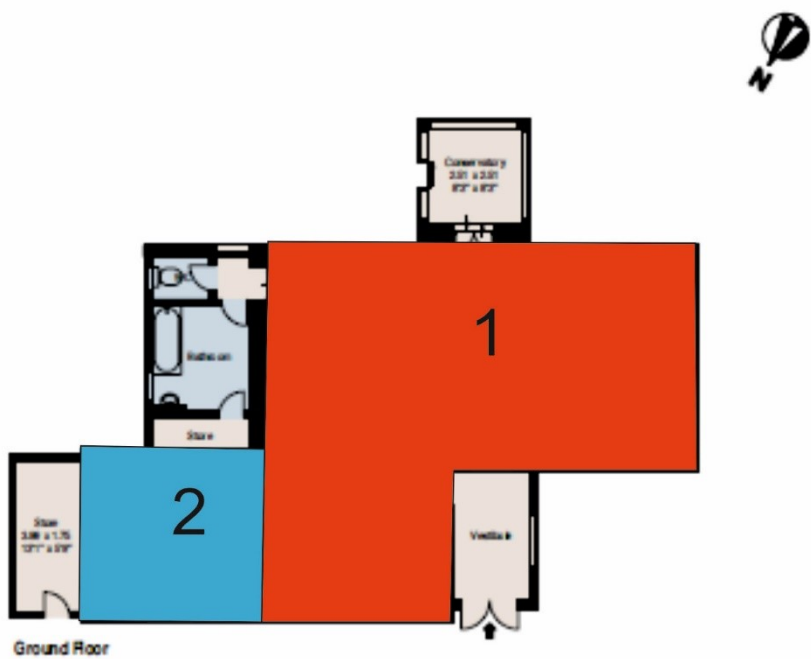


Illustration 34- Suggested phasing of building, red area 1 indicates first phase with blue area 2 as first addition to ground plan. Further modern extensions to ground plan are left uncoloured.