

Standing Building Survey  
Mucklarie Farmhouse, Snaigow  
Perth and Kinross



Building 1 at Mucklarie Farmhouse from the East



4<sup>th</sup> March 2019

## **Introduction**

The planning consent for this development (Perth and Kinross Council Planning Application 18/02170/FLL) included an archaeological condition specifying the need for a standing building record of Mucklarie Farmhouse using ALGAO Scotland's Historic Building Recording Guidance (2013). This standing building survey was carried out by the author on Tuesday 19<sup>th</sup> February 2019 (Site Code MCK01), weather conditions were slightly overcast.

## **Location (Illus 1)**

Mucklarie Farmhouse lies to the West of Snaigow Home Farm, 2 miles North West of Caputh. The main Farmhouse building has been unoccupied for at least 30 years and lies within a fenced and walled off garden area that is approached by a track from the West.

## **Historical Background (Illus 2-3)**

A settlement named 'Mucklierie' is shown on Stobie's map of 1783 (Illus 2) and probably lay in the fields to the North of the site under survey. Mucklarie Farmhouse is not properly mapped in its existing layout until it appears on the First Edition Ordnance Survey map of 1862 (Illus 3). From a brief examination of the Census Records there are eight people listed at Mucklarie in 1851, their occupations are listed as shepherd, agricultural labourer, farm labourer and forester (Scotland's People 1851 Census Record). It seems likely that they were living in the group of three buildings that were involved in this survey.

## **Description of building (Illustration 4)**

The group of buildings at Mucklarie Farmhouse have been numbered individually for this survey (as indicated on illus 4).

### **Building 1**

This building is laid out on a North to South alignment and has a slate roof with chimneys at each gable end.

#### **External Description**

##### *Eastern Elevation (Illustration 5 and 6)*

This is built of mortar bonded rough green sandstones with cut red sandstone blocks at the corner quoins, doorway and windows. At first floor level there are three plain windows, two of these are completely blocked with wood the third is half blocked and half glazed. At ground floor level there is a plain window which is blocked with wood, a doorway with a wooden door painted light blue and another window which is unblocked.

##### *Northern Elevation (Illustration 5 and 7)*

This is a gable end to the building with a chimney at its apex. The plain wall face is built of mortar bonded green sandstones with cut red sandstone quoins at the corners. The wooden roof flashings are painted light blue.

##### *Southern Elevation (Illustration 5 and 8)*

This is the other gable end to this building and has a chimney at its apex. The plain wall face is built of mortar bonded green sandstones with cut red sandstone quoins at the corners. The wooden roof flashings are painted light blue.

##### *Western elevation (Illustration 5 and 9)*

This is built of mortar bonded green sandstones with cut red sandstones at its northern corner. Building 2 is built against the wall face and there are two windows (one glazed and blocked internally and one fully blocked) above each other adjacent to the junction of the two buildings.

#### **Internal Descriptions**

Internally this building is now a pigeon infested shell. The upper floor has been completely removed and holes for floor supports are visible in all internal elevations. This building has a modern timber framed roof.

##### *Eastern elevation (Illustration 10)*

The rough stone wall face is painted white and contains a doorway into Building 2 which is blocked with wood. On the northern side of the doorway there are two windows above each other which are blocked with wood. The upper window has a wooden lintel. A hole in the wall above the

blocked doorway has been repaired using mortared breeze blocks and there are visible mortared brick repairs between the windows.

#### *Northern elevation (Illustration 11-13)*

The rough stone wall face is painted white and contains a fireplace at first floor level and another larger fireplace at ground floor level. The lower fireplace is tiled with decorated tiles with a floral pattern (Illus 11), the upper one has had its tiles removed (Illus 12).

#### *Southern elevation (Illustrations 14 and 15)*

The rough stone wall face is painted white and contains fireplaces at first floor and ground floor level. Both fireplaces are tiled with plain tiles. There is a cupboard in the north eastern corner with a wooden lintel (Illus 14).

#### *Western elevation (Illustration 16)*

The rough stone wall face is painted white and at first floor level contains three windows with angled recesses. All three are blocked with wooden panels. At ground floor level there is an open window at the northern end of the elevation, a doorway with a wooden door and a window blocked with a wooden panel.

### **Building 2**

This building is in a dangerous state of collapse and was inaccessible. It is built of a mortar bonded rough stone and slate mix and has a slate roof with a chimney on its Western gable.

#### *Eastern Elevation*

This building is built against the Western elevation of Building 1 so has no Eastern elevation.

#### *Northern Elevation (Illustration 5 and 17)*

This is a wall built of mortar bonded green sandstones and has a plastered face. It contains a doorway with a wooden door painted blue and a wooden lintel. There is a single glazed window that is blocked internally with wood.

#### *Southern Elevation (Illustration 5 and 18)*

This wall is built of mortar bonded rough green sandstones and rounded boulders mixed with slates. It contains a glazed window that is blocked internally with wood and another smaller glazed window at a slightly lower level at its Eastern end.

#### *Western Elevation (Illustration 19)*

This is a gable end to Building 2 and has a chimney at its apex, Building 3 is butt jointed against this elevation.

### **Building 3**

This building is now roofless and is built against the Western elevation of Building 2 (Illustration 20), it is subdivided into three rooms (3a, 3b and 3c).

#### *Eastern Elevation*

This building is butt jointed against Building 2 and has no external Eastern elevation.

#### *Northern Elevation (Illustration 21)*

This is a mortar bonded rough stone and slate wall with large sandstone quoins at its junction with the Western end of Building 2. There is a doorway into Room 3a which has a surviving stone lintel, a glazed window into Room 3b with a cast iron stove or boiler chimney running out through it and a doorway into Room 3c which has a stone lintel and an open window on its Western side.

#### *Western Elevation (Illustration 22)*

This wall is built of mortar bonded rough stones and slates and is a blank face.

#### *Southern Elevation (Illustration 23 and 24)*

This wall is built of mortar bonded rough stones and slates and apart from a doorway into Room 5 is a blank wall face. A garden wall runs South of this elevation.

#### **Room 3a** (Illustrations 25 and 26)

The Western, Southern and Northern internal elevations of this room are painted white. The Eastern elevation is built of small mortar bonded rounded stones and has plaster collapsing from its wall face. The chimney for Building 2 is visible at the apex of the gable in the Western elevation. The doorway into this room is in its Southern internal elevation. The floor level is buried under collapsed roof slates and timbers and is not visible.

#### **Room 3b** (Illustrations 27 to 29)

The doorways into this room are in its internal Northern and Southern elevations. The Western and Eastern internal elevations are blank wall faces. There is a rusty cast iron stove or boiler against its Southern elevation and a glazed window, the stove/boiler chimney runs out through the window. The floor level is buried under collapsed roof slates and timbers and is not visible.

#### **Room 3c** (Illustration 30)

The doorway into this room is in its internal Southern elevation and there is an unglazed and open window space on the Western wide of the doorway. The Northern, Western and Eastern internal

elevations are blank. The floor level is buried under collapsed roof slates and timbers and is not visible.

#### **Building 4** (Illustration 31)

This is a collapsing wooden shed or garage that stands against the Western end of the external Southern elevation of Building 3.

#### **Garden Wall** (Illustrations 4 and 24)

This wall runs South off the external Southern elevation of Building 3 and encloses a small group of trees that lies to the South of the building complex.

#### **Machine Dug Trenches** (Illustrations 33 and 34)

There are three machine excavated trenches lying on the Northern side of Buildings 2 and 3. The first of these measures 10m by 1m and is 0.5m deep. The second is 5m by 1m and 0.7m deep, the third trench lies 15m West of the buildings, measures 3m by 1m and is 0.5m deep. Natural clay and stone is visible in all three trenches at 0.20m, 0.30m and 0.50m respectively. These trenches appear to have been dug to trace the course of a water pipe.

#### **Suggested Phasing of Buildings and general comments**

It would appear that Buildings 1 and 2 were built first and Building 3 was butted against the Western elevation of Building 2. Where wooden doorways or roof flashings survive on these buildings, they are painted light blue which appears to be the signature colour of the buildings belonging to the Snaigow Estate.

#### **Recommendations**

The author feels that the photographic survey and written notes of the complex of buildings at Mucklarie Farmhouse are an adequate record of the buildings prior to their demolition and refurbishment and there would seem to be no need for any further work. However, the final decision on that rests with Perth and Kinross Heritage Trust.

#### **References**

*Cartographic Sources*((<http://www.nls.uk/maps>)

Stobie, James 1783 A large scale map of Perth and Clackmannan

Ordnance Survey Maps - Six-inch 1st edition, Scotland, 1843-1882

*Online*

Scotland's Places ([https://www.scotlandspeople.gov.uk/view-image/nrs\\_census/6561718?image=8](https://www.scotlandspeople.gov.uk/view-image/nrs_census/6561718?image=8))

## Illustration List

Illustration 1- Site location (red circle) (based on Ordnance Survey map 1:50000 Crown Copyright 2012. All Rights Reserved. Licence number 100049628)

Illustration 2- 'Mucklerie' as marked on Thomas Scobie's map of 1783 (© Trustees of National Library of Scotland)

Illustration 3- Mucklarie Farmhouse as marked on the First Edition Ordnance Survey map of 1862, marked with red arrow (© Trustees of National Library of Scotland)

Illustration 4- Top drawing shows the ground floor plan of the Mucklarie Farmhouse building complex (numbers refer to text descriptions of buildings) Lower drawing shows ground floor plans of Buildings 1 and 2 (based on supplied architect's plan)

Illustration 5-Elevations of Buildings 1, 2 and 3 at Mucklarie Farmhouse (based on supplied architects drawings)

Illustration 6- Eastern elevation of Building 1

Illustration 7- Northern elevation of Building 1

Illustration 8-Southern elevation of Building 1

Illustration 9- Western elevation of Building 1 showing Buildings 2 and 3 built against it.

Illustration 10 - Internal Eastern elevation of Building 1

Illustration 11 - Internal Northern elevation of Building 1

Illustration 12- Fireplace at first floor level in internal Northern elevation of Building 1

Illustration 13- Fireplace at ground floor level in Northern elevation of Building 1

Illustration 14- Southern internal elevation of Building 1 showing fireplaces on first and ground floor level.

Illustration 15- Cupboard in internal Southern elevation of Building 1

Illustration 16 – Internal Western elevation of Building 1

Illustration 17- Northern elevation of Building 2

Illustration 18 - Southern elevation of Building 2

Illustration 19 – Western elevation of Building 2 visible behind butt jointed Building 3

Illustration 20 – Butt joint between Buildings 2 and 3 visible in Southern elevation (to the right of the scale)

Illustration 21 - Northern elevation to Building 3

Illustration 22 - Western elevation to Building 3, collapsing Building 4 visible on right

Illustration 23 - Southern elevation of Building 3 up to edge of doorway into room 3b

Illustration 24 - Southern Elevation of Building 3 showing doorway into Room 3b

Illustration 25 – Plastered internal Northern and Western elevations of Room 3a in Building 3

Illustration 26 – Internal Eastern elevation of Room 3a in Building 3

Illustration 27 - Internal Northern elevation of Room 3b in Building 3

Illustration 28 – Internal Western and Southern elevations of Room 3b in Building 3 showing cast iron stove

Illustration 29 - Internal Eastern elevation of Room 3b in Building 3

Illustration 30 – General view of interior of Room 3c in Building 3

Illustration 31 – Building 4 looking East

Illustration 32 – General view of location of machine dug trenches to North of building complex.

Illustration 33 – General view of Machine dug trench 1 looking West

Illustration 34 – General view of machine dug trench 2



## Discovery & Excavation in Scotland Entry

LOCAL AUTHORITY:	Perth and Kinross
PROJECT TITLE/SITE NAME:	Mucklarie Farmhouse
PROJECT CODE:	MCK01
PARISH:	Caputh
NAME OF CONTRIBUTOR(S):	Derek Hall
NAME OF ORGANISATION:	Derek Hall, archaeologist and ceramic specialist
TYPE(S) OF PROJECT:	Standing Building Record
NMRS NO(S):	N/A
SITE/MONUMENT TYPE(S):	None
SIGNIFICANT FINDS:	None
NGR (2 letters, 6 figures)	NO 0721 4292
START DATE	19 <sup>th</sup> January 2019
END DATE	19 <sup>th</sup> January 2019
PREVIOUS WORK (incl. <i>DES</i> ref.)	None
MAIN (NARRATIVE) DESCRIPTION: (May include information from other fields)	A photographic survey was carried out of the 19 <sup>th</sup> century Farmhouse at Mucklarie, Snaigow, Perth and Kinross. Written descriptions were made of external and internal elevations and fittings.
PROPOSED FUTURE WORK:	None
SPONSOR OR FUNDING BODY:	Snaigow Estate
CAPTIONS FOR ILLUSTRS	N/A
ADDRESS OF MAIN CONTRIBUTOR:	34 Glenfarg Terrace, Perth, PH2 0AP
ARCHIVE LOCATION (intended)	NMRS
EMAIL ADDRESS:	Derek.hall1@blueyonder.co.uk

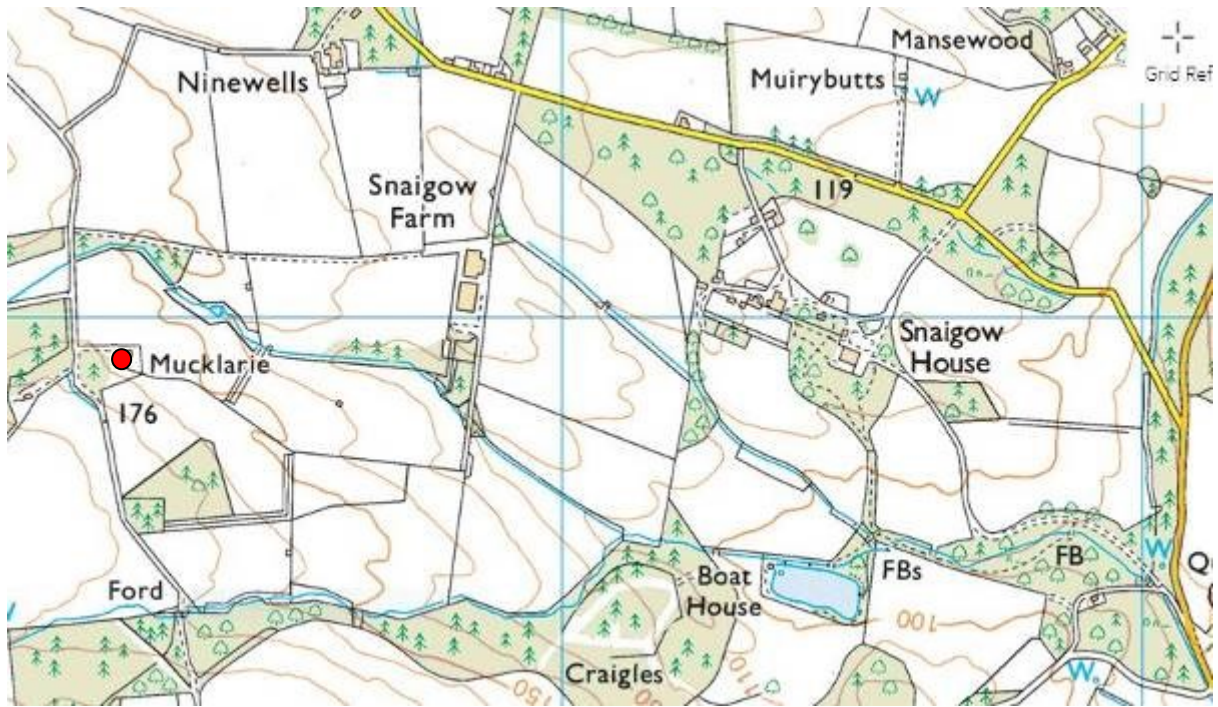


Illustration 1- Site location (red circle) (based on Ordnance Survey map 1:50000 Crown Copyright 2012. All Rights Reserved. Licence number 100049628)



Illustration 2- 'Mucklerie' as marked on Thomas Scobie's map of 1783 (© Trustees of National Library of Scotland)



Illustration 3- Mucklarie Farmhouse as marked on the First Edition Ordnance Survey map of 1862, marked with red arrow (© Trustees of National Library of Scotland)

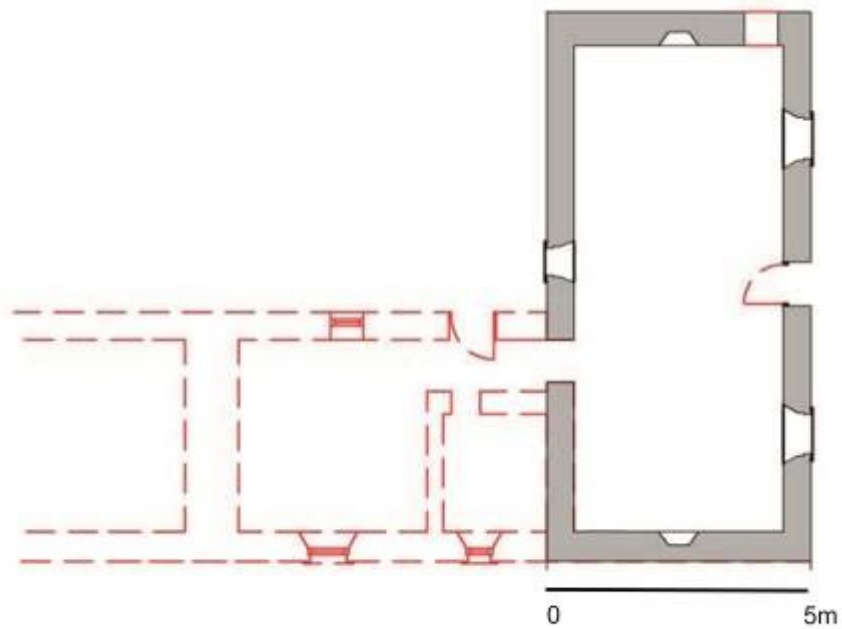


Illustration 4- Top drawing shows the ground floor plan of the Mucklarie Farmhouse building complex (numbers refer to text descriptions of buildings) Lower drawing shows ground floor plans of Buildings 1 and 2 (based on supplied architect's plan)

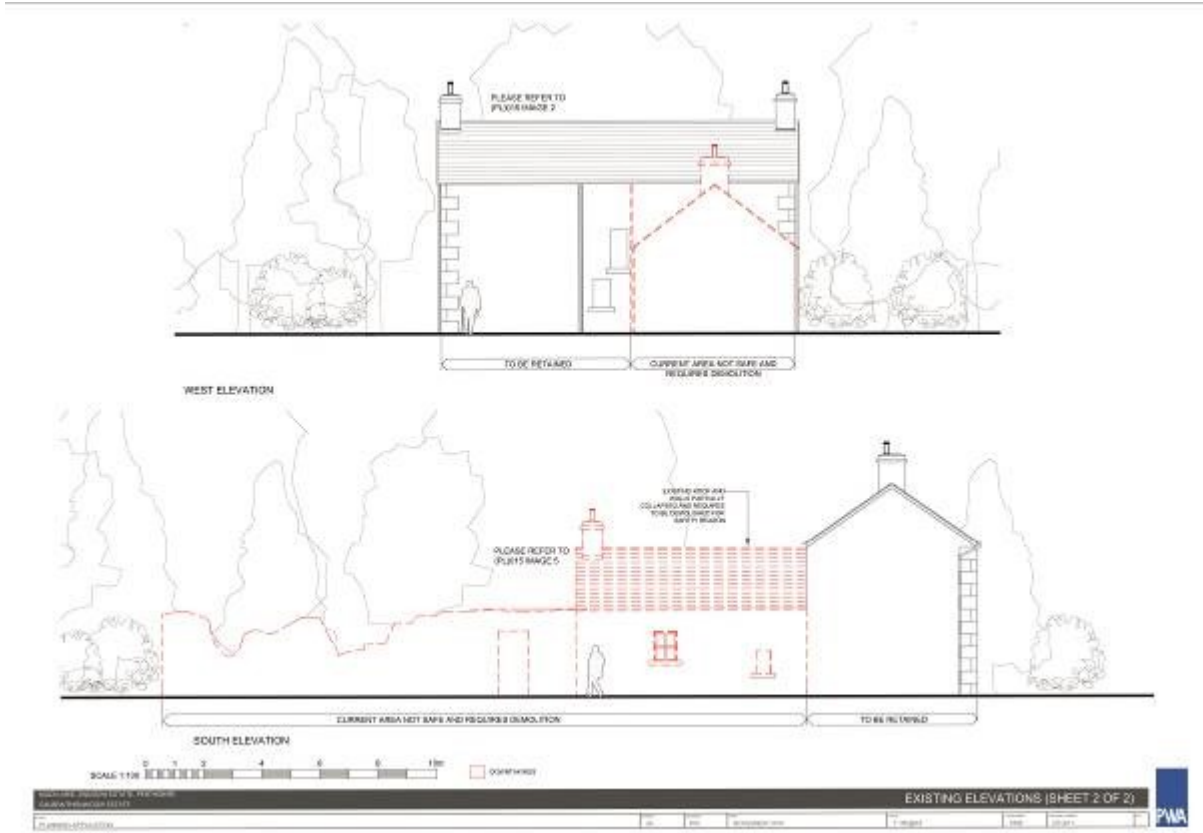


Illustration 5-Elevations of Buildings 1, 2 and 3 at Mucklarie Farmhouse (based on supplied architects drawings)



Illustration 6- Eastern elevation of Building 1



Illustration 7- Northern elevation of Building 1





Illustration 8-Southern elevation of Building 1



Illustration 9- Western elevation of Building 1 showing Buildings 2 and 3 built against it.



Illustration 10 - Internal Eastern elevation of Building 1



Illustration 11 - Internal Northern elevation of Building 1



Illustration 12- Fireplace at first floor level in internal Northern elevation of Building 1



Illustration 13- Fireplace at ground floor level in Northern elevation of Building 1 with decorated tiles



Illustration 14- Southern internal elevation of Building 1 showing fireplaces on first and ground floor level.



Illustration 15- Cupboard in internal Southern elevation of Building 1





Illustration 16 – Internal Western elevation of Building 1



Illustration 17 - Northern elevation of Building 2, note straight joint between the Western end of Building 2 and the Eastern end of Building 3 (red arrow)



Illustration 18 - Southern elevation of Building 2



Illustration 19 – Western elevation of Building 2 visible behind butt jointed Building 3



Illustration 20 – Butt joint between Buildings 2 and 3 visible in Southern elevation (to the right of the scale)



Illustration 21 - Northern elevation to Building 3



Illustration 22 - Western elevation to Building 3, collapsing Building 4 visible on right



Illustration 23 - Southern elevation of Building 3 up to edge of doorway into room 3b





Illustration 24 - Southern Elevation of Building 3 showing doorway into Room 3b



Illustration 25 – Plastered internal Northern and Western elevations of Room 3a in Building 3



Illustration 26 – Internal Eastern elevation of Room 3a in Building 3



Illustration 27 - Internal Northern elevation of Room 3b in Building 3



Illustration 28 – Internal Western and Southern elevations of Room 3b in Building 3 showing cast iron stove or boiler (red arrow)



Illustration 29 - Internal Eastern elevation of Room 3b in Building 3



Illustration 30 – General view of interior of Room 3c in Building 3



Illustration 31 – Building 4 looking East





Illustration 32 – General view of location of machine dug trenches to North of building complex.



Illustration 33 – General view of Machine dug trench 1 looking West



Illustration 34 – General view of machine dug trench 2