

# Standing Building Survey

## Orchilmore Farm and Cottage, Killiecrankie



Orchilmore Farm looking South



18<sup>th</sup> May 2010

## **Introduction**

Mr and Mrs Muirhead propose to develop the existing buildings at Orchilmore Farm (NN 9160 6366) and alter and extend the 'B' listed Orchilmore Cottage (NN 9162 6364). The planning consents for these two developments (Perth and Kinross Planning Applications 09/01118/FUL and 08/00545/FUL) included archaeological conditions which specified the need for standing building recording of the farm buildings, cottage and any surviving elements of the 18<sup>th</sup> century township. This survey was carried out by the author on Thursday 6<sup>th</sup> May 2010 (Site Code ORC01); weather conditions were fine with bright sunlight.

## **Historical Background (Illustrations 3 and 4)**

Although it is not named General Roy's military survey of Scotland (1747-55) appears to show a settlement where Orchilmore is located close to the 'Field of Battle' (Killiecrankie 1679), James Stobie's map of the late 18<sup>th</sup> century shows 'Orchil-more', thus indicating the definite presence of a settlement by that name on this site at that date. John Thomson's map of 1832 marks Orchilmore beside a symbol and date indicating the location of the Battle of Killiecrankie in 1679. The 1<sup>st</sup> Edition Ordnance Survey map of c1860 shows at least five buildings on the site and includes a long row of buildings on its eastern side. From a brief study of a published compendium of Scottish land ownership c 1770 Orchilmore is not listed although both the nearby settlements of Urrard and Orchilbeg are (Timperley 1976). By the first Valuation Rolls of the 1850's Easter Orchilmore is listed as being under the proprietorship of Captain Boxer Alston Stewart of Urrard (Valuation Rolls 1857-58).

## **Description of buildings (Illustration )**

### *Location*

Orchilmore Farm and cottage stand on the hill side above Killiecrankie in Northern Perthshire. The farm is built at a height of 218m OD and the modern route of the A9 runs below. For the purpose of this report the buildings at Orchilmore have been numbered 1-6 (Illus 1 and 2).

### **Building 1 ('B' listed cottage) (Illustrations 5-16)**

This single storey building is aligned NW-SE and is constructed of mortar bonded random rubble and has a corrugated iron roof with two skylights. There are two small chimneys which are set in from the gable ends

#### *South Western Elevation(Illus 5, 6 and 7)*

This elevation contains two small windows and a doorway that is located slightly off centre. A visible straight joint in the wall face indicates a blocked much wider entranceway.

#### *South Eastern Elevation(Illus 8)*

This gable elevation is blank with a small wooden outhouse/toilet built against it. There is a projecting stone at a height of 3.25m from ground level 0.50m from the roof line.

#### *North Eastern Elevation(Illus 9)*

This elevation has a small window half way along its length.

#### *Northern Elevation(Illus 10)*

This gable elevation is blank.

#### *Earthwork platform(Illus 16)*

A semicircular earthwork platform is visible in front of the South Western Elevation of this building. It has the remnants of a revetted stone face on its Western side.

### *Interior(Illus 10-13)*

This building comprises two rooms internally, the room at its north western end contains a fire place and hearth of 'cat and clay' construction projecting out from the gable wall (Walker 1979, 52). This room has a low ceiling and attic space above which contains the 'hanging lum' (Illus 11). The other room contains the remains of two wooden crucks built into its North Eastern wall face, the southernmost cruck (2) survives to a height of 1.37m and stands on a cruck stone 0.60m above the floor and has been sawn off where it meets the roof line (Illus 13). The northernmost cruck (1) survives to a height of 1.3m and runs up into the attic space. This room has a curved panel board ceiling which extends up to ridge height. Both rooms have concrete floors.

## **Summary**

This simple single storey building seems to have originally had much wider entrance through its South Western wall, at its gable ends its wall corner elevations slope inwards from base to roof line. The fireplace, hearth and 'hanging lum' are unique survivals and appear to be largely unaltered. A function for the earthwork platform in front of the cottage is difficult to define, there are traces of a former kerbed pathway leading up to the front door.

### **Building 2 a (Illus 16, 17 and 21)**

This southern half of this building has two storeys (2a), the northern half only one (2b). It is built of mortar bonded dressed cut stone and has a concrete tile roof.

#### *South Eastern Elevation(Illus 16)*

This elevation has two small windows and a loading bay at first floor level and a window and small doorway at ground level.

#### *South Western Elevation(Illus 17)*

This gable end has a blank wall face.

#### *North Eastern Elevation(Illus 17)*

This elevation has two shed/loading bays at ground level and two small windows at first floor level. The lintel for the entrances into the shed/bays is a long cast iron girder.

#### *South Western Elevation(Illus 17)*

This elevation contains a single doorway.

### **Building 2 b (Illus 18 and 20)**

This structure has Building 3 butted against its North Western elevation.

#### *South Western Elevation(Illus 18)*

This elevation contains a single doorway.

#### *South Eastern Elevation(Illus 18)*

This elevation contains a single doorway that is blocked with concrete breeze blocks.

#### *South Western Elevation*

This contains one window.

### *Interior*

Building 2a was used for storage and has a timber mezzanine first floor level with a ladder access to the first floor level of the South Western elevation.

Building 2b contains animal pens and has also been used for storage.

### **Summary**

Buildings 2a and 2b are both agricultural buildings used for storage and housing animals. They would appear to be of a later date than Building 1 probably late 19<sup>th</sup> century.

### **Building 3 (Illus 19, 20 and 23)**

This structure is butted against the North Eastern face of Building 2b and its Northern Eastern and North Western walls are built of brick it has a corrugated iron roof.

#### *South Western Elevation(Illus 19)*

This elevation has a wide entranceway with two wooden doors.

#### *North Eastern Elevation (Illus 19)*

This is a blank wall face.

### *Interior*

This building contains straw and was probably an animal shed. There are traces of large paving stones on the floor of this building (Illus 23) and a stepped area into the North end of 2b.

### **Summary**

This brick built structure is butted against the North Eastern face of Building 2b, the paving and step suggest that prior to its erection this area was an open courtyard in front of the Northern end of Building 2b.

### **Shed (Illus 22)**

This small building stands to the south west of buildings 2a and 2b. It is constructed of mortar bonded dressed stones and has a pitched corrugated iron roof.

#### *South Eastern Elevation*

This is a blank wall face.

#### *South Western Elevation(Illus 22)*

This elevation contains two doorways and a central window.

#### *North Eastern and North Western Elevations*

Both these elevations have blank wall faces.

#### *Interior*

There are the remains of small wooden cages suggesting this may have been a chicken shed.

### **Building 4 (Illus 23-26)**

This structure stands on the eastern side of the site and is built slightly into the hill slope it is built of mortar bonded stone and has a corrugated iron roof.

#### *South Eastern Elevation(Illus 24)*

This is blank wall face, there is a slight slope to the wall corner from roof to ground level.

#### *South Western Elevation(Illus 23 and 24)*

There is a central wide entrance into this building and one window at the Northern end of this elevation. There is a visible change in build at the Southern end of this elevation, it is of similar construction to Building 1 (the listed cottage).

#### *North Western Elevation(Illus 25)*

This is a blank wall face.

#### *North Eastern Elevation(Illus 25 and 26)*

This is a blank wall face. At two places on this elevation there are pairs of large stones projecting from the wall face.

### *Interior*

There is a standard fireplace in the inside face of the North Western Elevation of this building. It would appear to have been used for storage purposes.

### *Summary*

This building would appear to have originally been of a similar date to the listed cottage but has been rebuilt at a later stage. The only surviving element that may be of an early date is visible at its South Eastern corner where the stonework resembles that visible in Building 1 (Illus 24). The projecting stones on the South Eastern elevation may have been designed to aid the support of a thatched roof?

### **Stone Wall (Illus 2 and 27)**

This drystone built wall is 1.4m high and runs for 9.32m South from the back SE corner of building 4. It may represent the back wall of the line of buildings that are marked on the 1<sup>st</sup> Edition Ordnance Survey map.

### **Buildings 5 and 6 (Illus 28 and 29)**

These two structures are modern steel frame animal sheds. There are large piles of stone rubble visible both behind and on the Northern side of these buildings (Illus 2 and 29), this may well represent the remains of earlier buildings that have been cleared during their construction.

### **Recommendations**

The author feels that the photographic survey, written notes and drawn elevations of the buildings are an adequate record of them prior to their redevelopment. Consideration may need to be given to recommending the need for a watching brief on all ground breaking works, new service trenches or wall reduction or rebuild that are part of any redevelopment scheme. However the final decision on the need for any further work rests with Perth and Kinross Heritage Trust.

### **References**

*Cartographic Sources* (<http://www.nls.uk/maps>)

Roy, William General 1747-55 **Military Survey of Scotland**

Stobie, James 1783 **A large scale map of Perth and Clackmannan**

Thomson, John 1832 **Atlas of Scotland**

**Ordnance Survey Maps - Six-inch 1st edition, Scotland, 1843-1882**

*Printed*

Timperley, Loretta 1976 *A Directory of Landownership in Scotland, c.1770*, Scottish Record Society, New Series 5 (Edinburgh, 1976)

Walker, Bruce 1979 'The vernacular buildings of North East Scotland: An exploration', *Scottish Geographical Journal*, 95: 1, 45 — 60



## Discovery & Excavation in Scotland Entry

LOCAL AUTHORITY:	Perth and Kinross
PROJECT TITLE/SITE NAME:	Orchilmore Farm and Cottage, Killicrankie
PROJECT CODE:	ORC01
PARISH:	Moulin
NAME OF CONTRIBUTOR(S):	Derek Hall
NAME OF ORGANISATION:	Derek Hall, archaeologist and ceramic specialist
TYPE(S) OF PROJECT:	Standing Building Survey
NMRS NO(S):	None
SITE/MONUMENT TYPE(S):	Farmhouse , steadings and cottage
SIGNIFICANT FINDS:	None
NGR (2 letters, 6 figures)	NN 677 393
START DATE	6 <sup>th</sup> May 2010
END DATE	6 <sup>th</sup> May 2010
PREVIOUS WORK (incl. <i>DES</i> ref.)	None
MAIN (NARRATIVE) DESCRIPTION: (May include information from other fields)	A rapid photographic standing building survey was undertaken in advance of the redevelopment of the farm steadings and 'B' listed cottage. Two in situ crucks a fireplace and hanging lum in the cottage were photographically recorded. The major elevations of the cottage were drawn.
PROPOSED FUTURE WORK:	Watching Brief
SPONSOR OR FUNDING BODY:	Mr and Mrs Gordon Muirhead
CAPTIONS FOR ILLUSTRS	N/A
ADDRESS OF MAIN CONTRIBUTOR:	34 Glenfarg Terrace, Perth, PH2 0AP
ARCHIVE LOCATION (intended)	NMRS
EMAIL ADDRESS:	Derek.hall1@blueyonder.co.uk

## **Report Illustration List**

Illustration 1 Location of Orchilmore Farm and Cottage (based on Ordnance Survey map Crown Copyright 2010. All Rights Reserved. Licence number 100049628)

Illustration 2 Buildings at Orchilmore Farm as numbered for survey

Illustration 3 Orchilmore on General Roy's Military Survey 1747-55 and James Stobies map of 1783 (© Trustees of National Library of Scotland)

Illustration 4 Orchilmore on John Thomson's map of 1832 and First Edition Ordnance Survey map of c 1860 (© Trustees of National Library of Scotland)

Illustration 5 General view of Orchilmore Farm looking South South West and South Western Elevation of Orchilmore Cottage (B listed)

Illustration 6 Northern end of South Western elevation of Building 1

Illustration 7 Existing doorway in South Western elevation to Building 1 with straight joint indicating blocked wider entrance and Southern end of South Western elevation

Illustration 8 Southern and South Eastern elevation of Building 1

Illustration 9 Window in North Eastern elevation of Building 1 and Northern elevation

Illustration 10 General view of 'cat and clay' fireplace in Building 1 and detail view of fireplace

Illustration 11 'Hanging Lum' visible in attic of Building 1

Illustration 12 Cruck 1 in Eastern wall of Building 1

Illustration 13 Cruck 2 in Eastern wall of Building 1

Illustration 14 South Western, Northern, Southern and South Eastern elevations of Building 1 at 1:100

Illustration 15 Ground plan of Building 1 showing location of crucks and fireplace at 1:100

Illustration 16 Revetted platform in front of Building 1 and Southern Eastern elevation of Building 2a

Illustration 17 Northern elevation of Building 2a and South Western elevations of Buildings 2a and 2b

Illustration 18 South Eastern and South Western elevation of Building 2b

Illustration 19 South Western and North Eastern elevations of Building 3

Illustration 20 Eastern elevations of Buildings 3 and 2b

Illustration 21 Eastern elevation of Building 2a

Illustration 22 South Western elevation of small shed

Illustration 23 Large paving stones visible in floor of building 3 and South Western elevation of Building 4

Illustration 24 Change in build visible in South Western elevation of Building 4 and its South Eastern elevation

Illustration 25 North Western and North Eastern elevations of Building 4

Illustration 26 Protruding thatch supports in North Eastern elevation of Building 4

Illustration 27 Stone wall running South East from Building 4

Illustration 28 Buildings 5 and 6

Illustration 29 Rubble visible behind Buildings 5 and 6

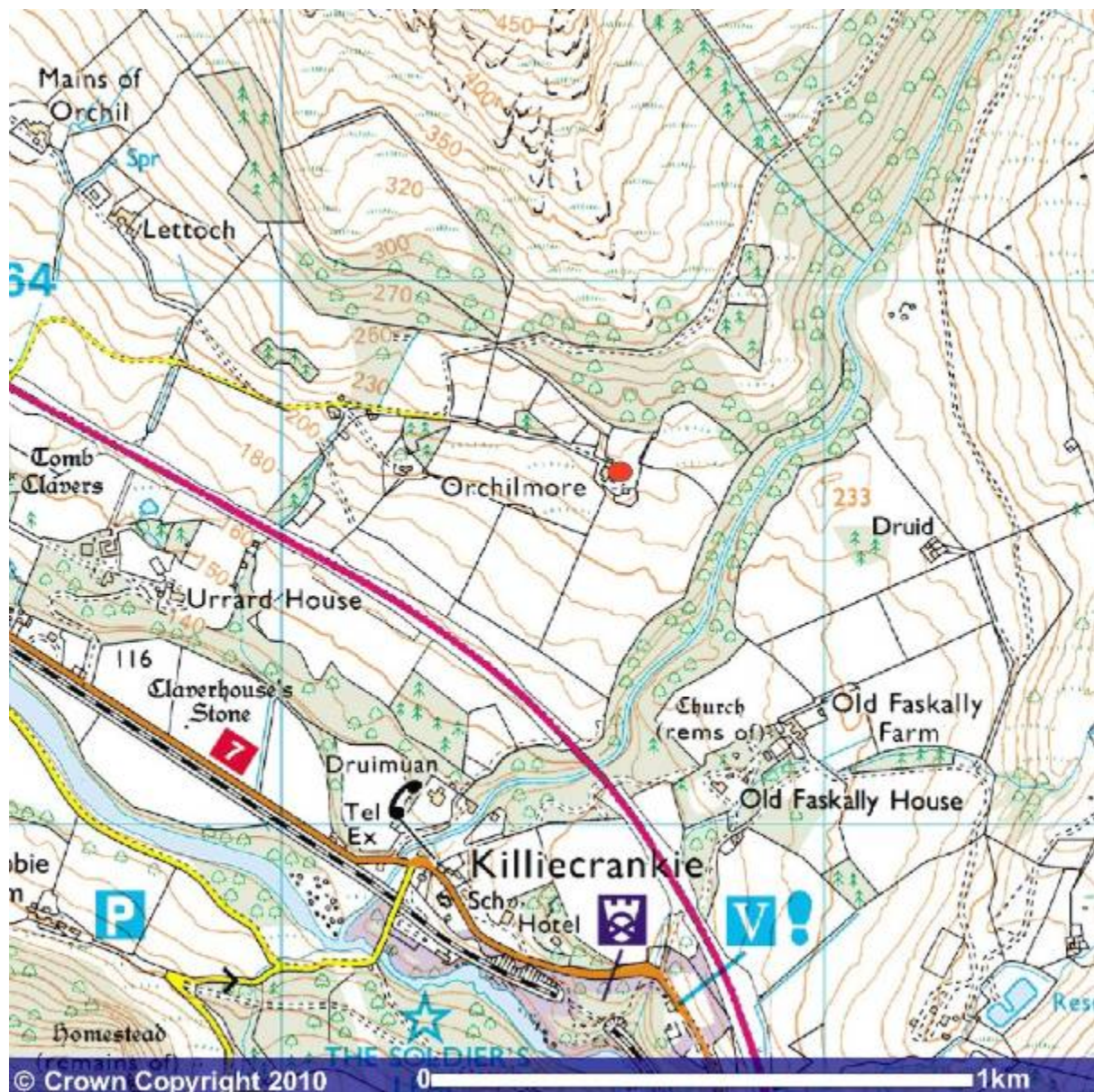


Illustration 1 Location of Orchilmore Farm and Cottage (based on Ordnance Survey map Crown Copyright 2010. All Rights Reserved. Licence number 100049628)

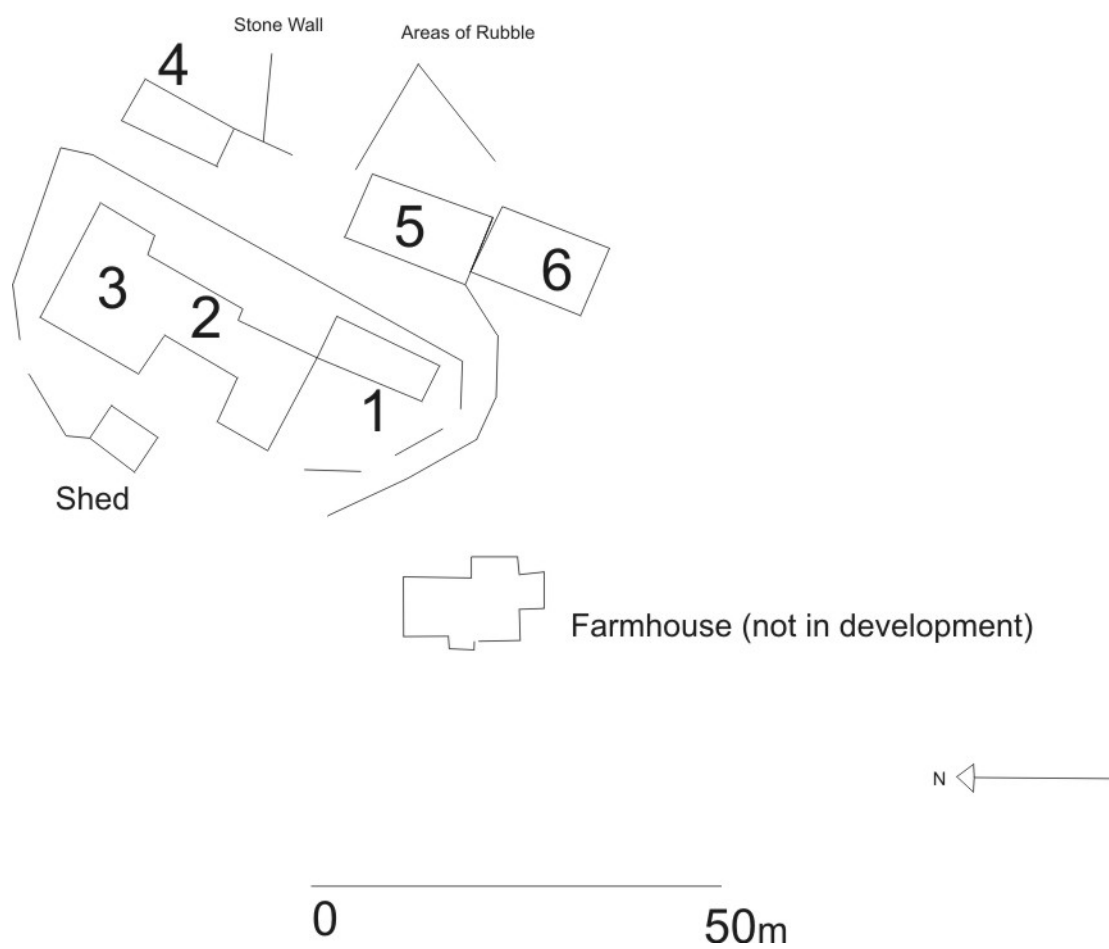


Illustration 2 Buildings at Orchilmore Farm as numbered for survey





Illustration 3 Orchilmore on General Roy's Military Survey 1747-55 and James Stobies map of 1783  
(© Trustees of National Library of Scotland)

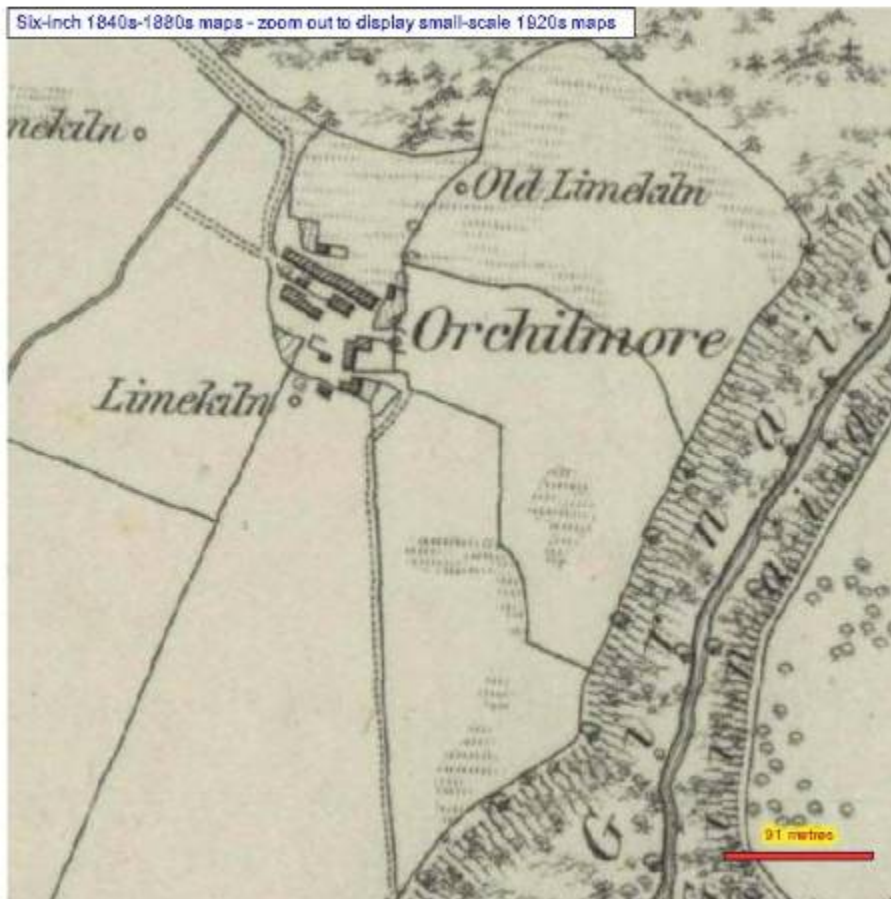


Illustration 4 Orchilmore on John Thomson's map of 1832 and First Edition Ordnance Survey map of c 1860 (© Trustees of National Library of Scotland)



Illustration 5 General view of Orchilmore Farm looking South South West and South Western  
Elevation of Orchilmore Cottage (Building 1) (B listed)





Illustration 6 Northern end of South Western elevation of Building 1



Illustration 7 Existing doorway in South Western elevation to Building 1 with straight joint indicating blocked wider entrance and Southern end of South Western elevation





Illustration 8 Southern and South Eastern elevation of Building 1



Illustration 9 Window in South Eastern elevation of Building 1 and Northern elevation





Illustration 10 General view of 'cat and clay' fireplace in Building 1 and detail view of fireplace



Illustration 11 'Hanging Lum' visible in attic of Building 1



Illustration 12 Cruck 1 in Eastern wall of Building 1



Illustration 13 Cruck 2 visible in Eastern wall of Building 1



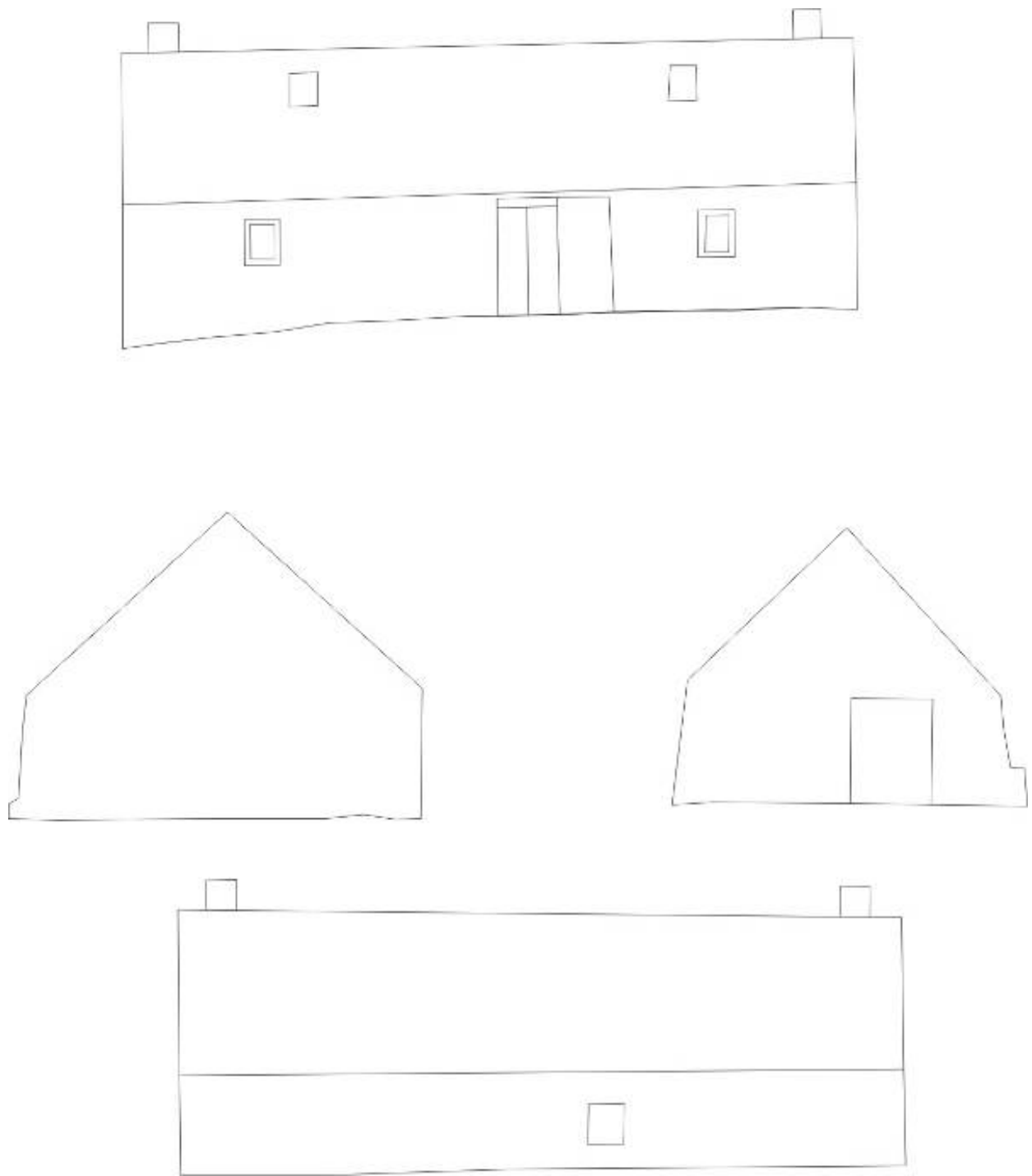


Illustration 14 South Western, Northern, Southern and South Eastern elevations of Building 1 Scale 1:100

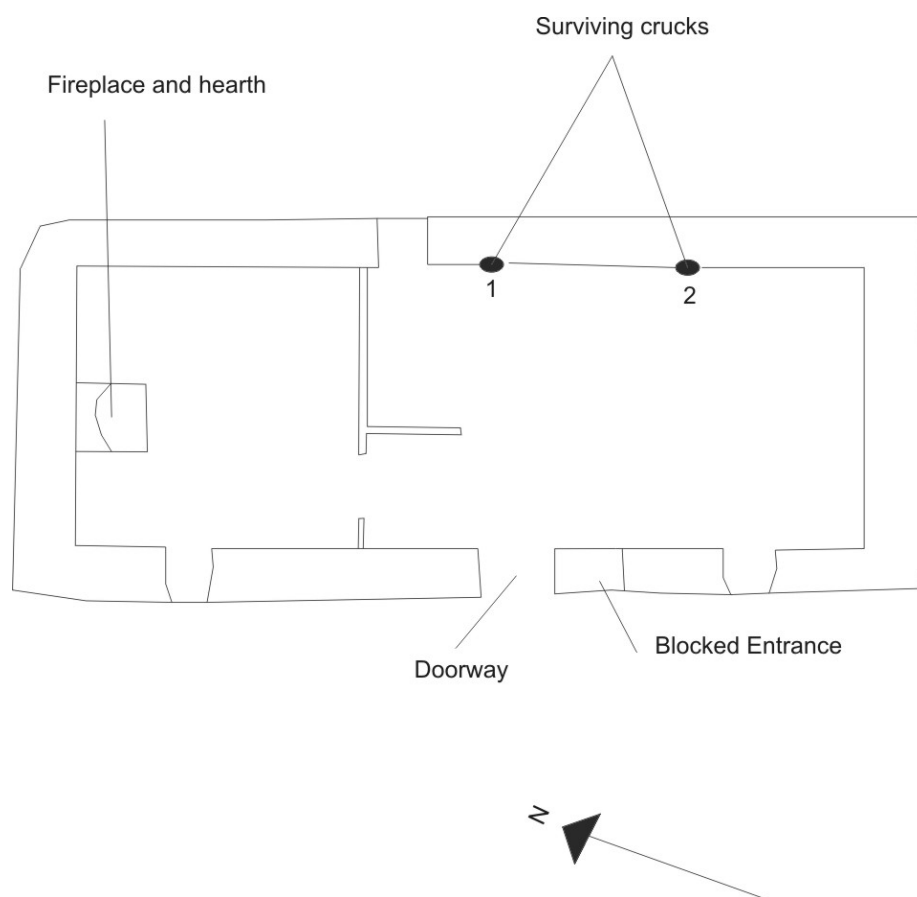


Illustration 15 Ground plan of Building 1 showing location of crucks and fireplace Scale 1:100



Illustration 16 Revetted platform in front of Building 1 and Southern elevation of Building 2a





Illustration 17 Northern elevation of Building 2a and South Western elevations of Buildings 2a and 2b



Illustration 18 Southern elevation and South Western elevation of Building 2b





Illustration 19 South Western and Northern elevations of Building 3



Illustration 20 Eastern elevations of Buildings 3 and 2b





Illustration 21 Eastern elevation of Building 2a





Illustration 22 South Western elevation of small shed



Illustration 23 Large paving stones visible in floor of building 3 and South Western elevation of Building 4





Illustration 24 Change in build visible in South Western elevation of Building 4 and its Southern elevation



Illustration 25 Northern and North Eastern elevations of Building 4





Illustration 26 Protruding thatch supports in North Eastern elevation of Building 4



Illustration 27 Stone wall running South East from Building 4





Illustration 28 Buildings 5 and 6





Illustration 29 Rubble visible behind Buildings 5 and 6