

# The proposed changes to OASIS...



## The HERALD Project

Jo Gilham  
HERALD Project Manager

# Things we will cover today

- Overview of the changes planned for OASIS
- Focussing on a couple of those changes so we can discuss them later

# General changes

More up to date  
technology

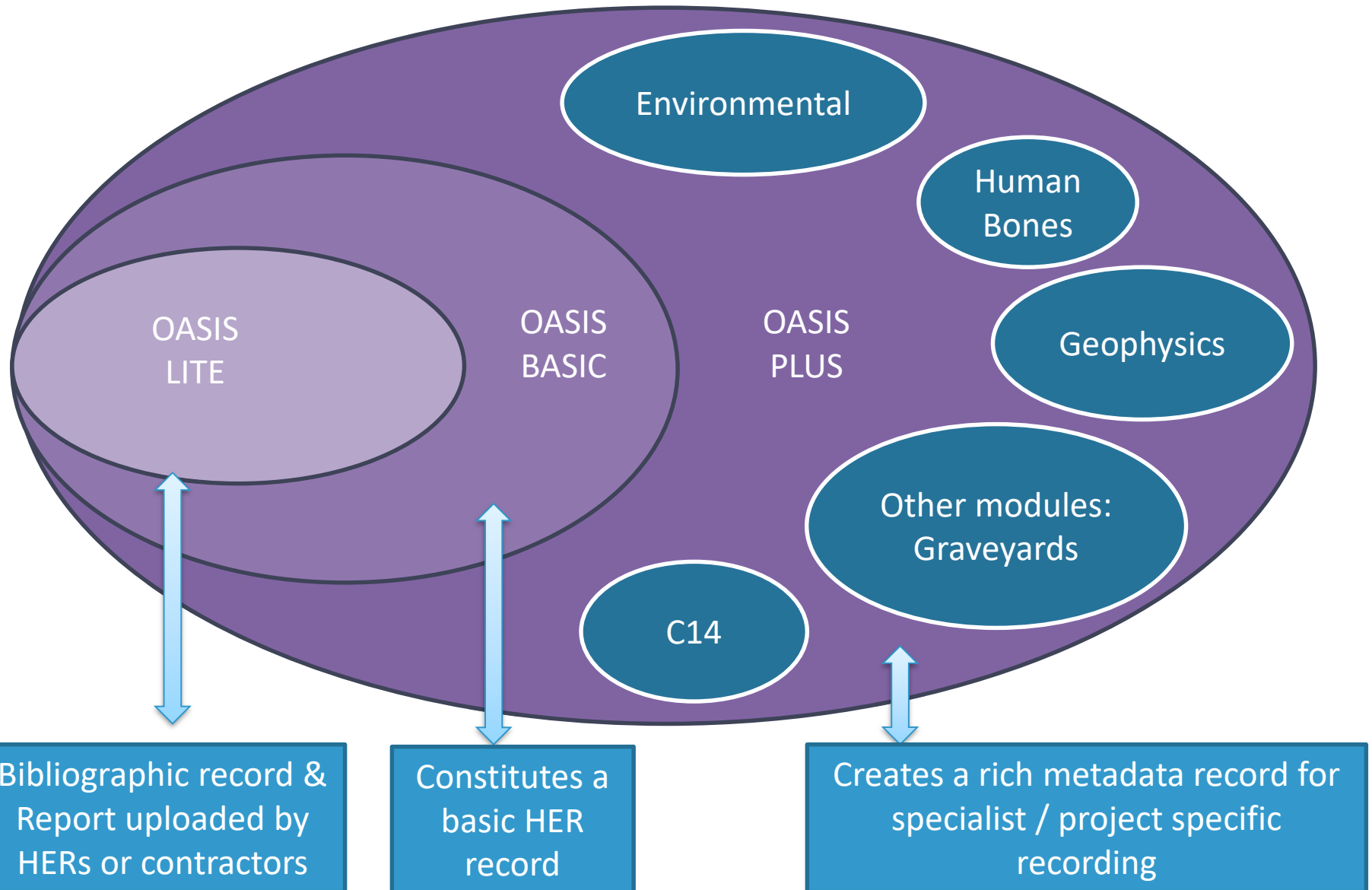
Longer page timeouts,  
auto saves

Records 'always open'

Review not validation

Versioning

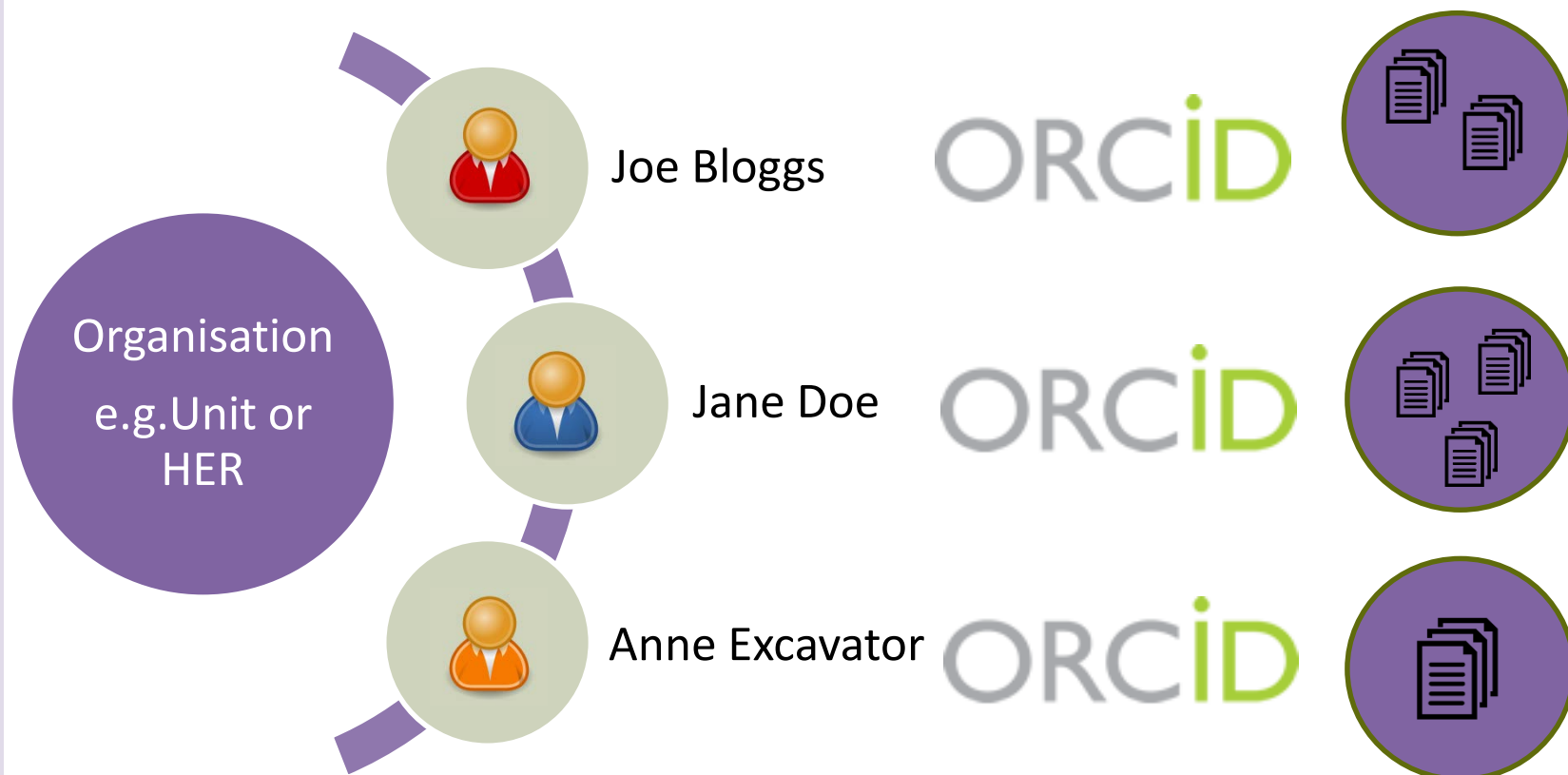
# Levels of OASIS data collection



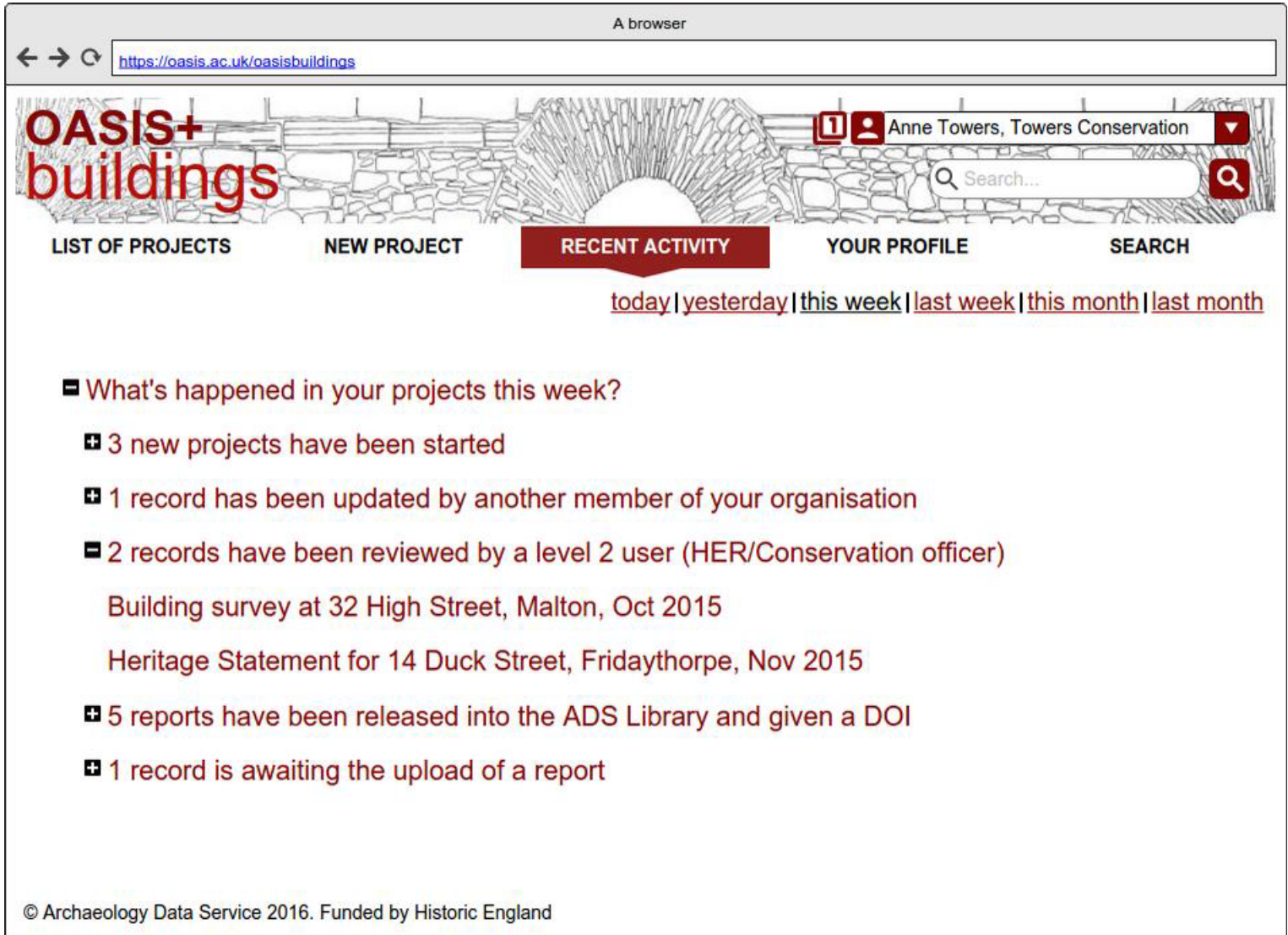
# Types of user



# Register & ORCID



# Recent activity updates

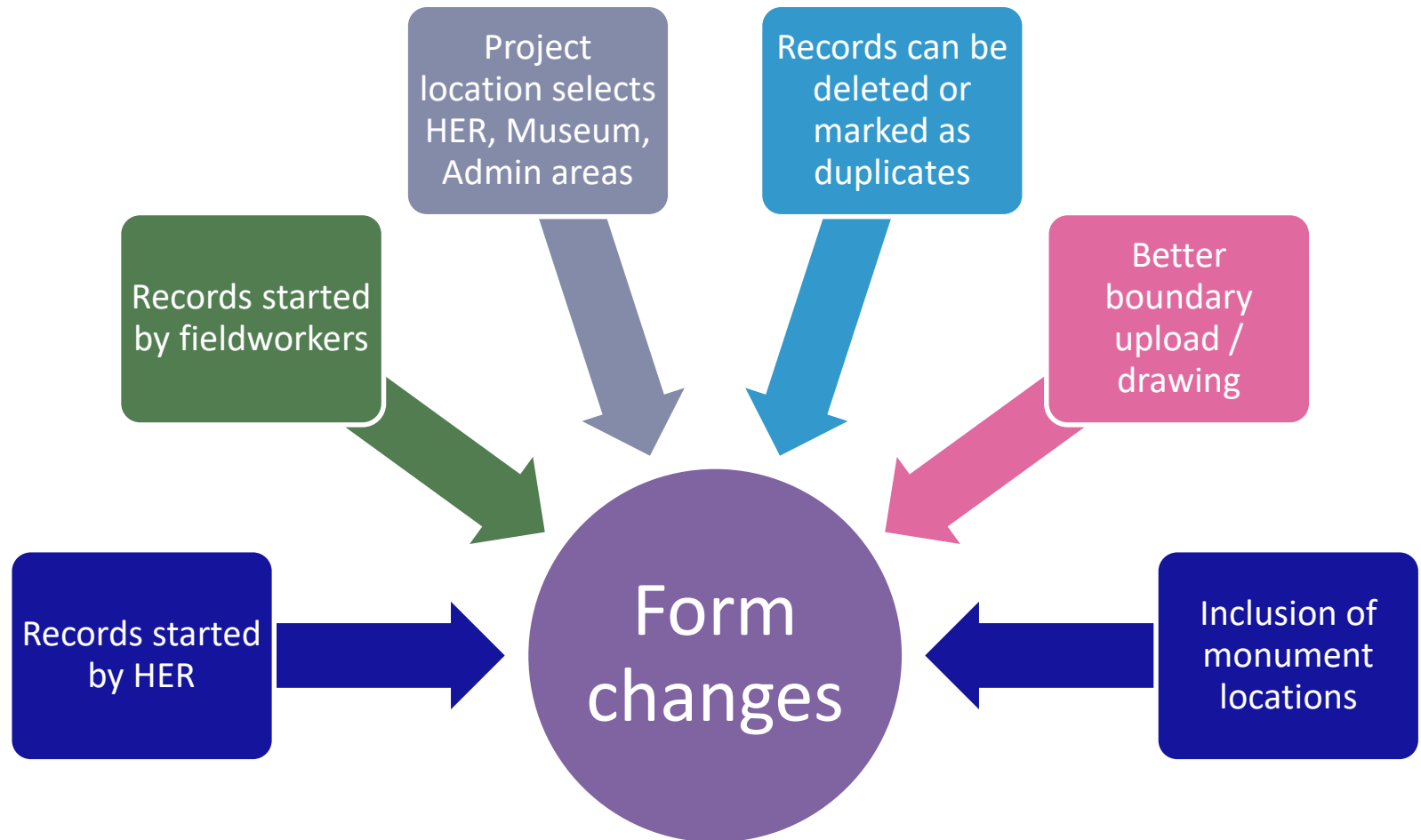


The screenshot shows a web browser window with the URL <https://oasis.ac.uk/oasisbuildings>. The page features a header with the "OASIS+ buildings" logo and a navigation bar with links: LIST OF PROJECTS, NEW PROJECT, RECENT ACTIVITY (highlighted), YOUR PROFILE, and SEARCH. A user profile for "Anne Towers, Towers Conservation" is visible in the top right. Below the navigation bar, there are filters for time periods: today, yesterday, this week, last week, this month, and last month. The main content area displays a summary of recent activity:

- What's happened in your projects this week?
  - ✚ 3 new projects have been started
  - ✚ 1 record has been updated by another member of your organisation
  - 2 records have been reviewed by a level 2 user (HER/Conservation officer)
    - Building survey at 32 High Street, Malton, Oct 2015
    - Heritage Statement for 14 Duck Street, Fridaythorpe, Nov 2015
  - ✚ 5 reports have been released into the ADS Library and given a DOI
  - ✚ 1 record is awaiting the upload of a report

© Archaeology Data Service 2016. Funded by Historic England

# The records within the form





# Organisation information pages

- One for each organisation
- Tells other OASIS users how this HER, Unit, Museum uses OASIS
- Partly automatically completed shows the settings in OASIS – OASIS LITE/STANDARD
- Also space for including area specific requirements, uploaded documents and links out to organisation web pages

# Report uploads



# Research frameworks

A browser

← → ↻
<https://oasis.ac.uk/oasisbuildings>

Anne Towers, Towers Conservation

LIST OF PROJECTS

NEW PROJECT

RECENT ACTIVITY

YOUR PROFILE

SEARCH

Project Summary

Event type

Location

Project details

Associated Ids

Report upload

Keywords

Research outcomes

Project creators

Archive details

OASIS ID towers1-135790

**Research frameworks**

Does the project brief or Written Scheme of Investigation (WSI) refer to a particular Research Framework?

Add

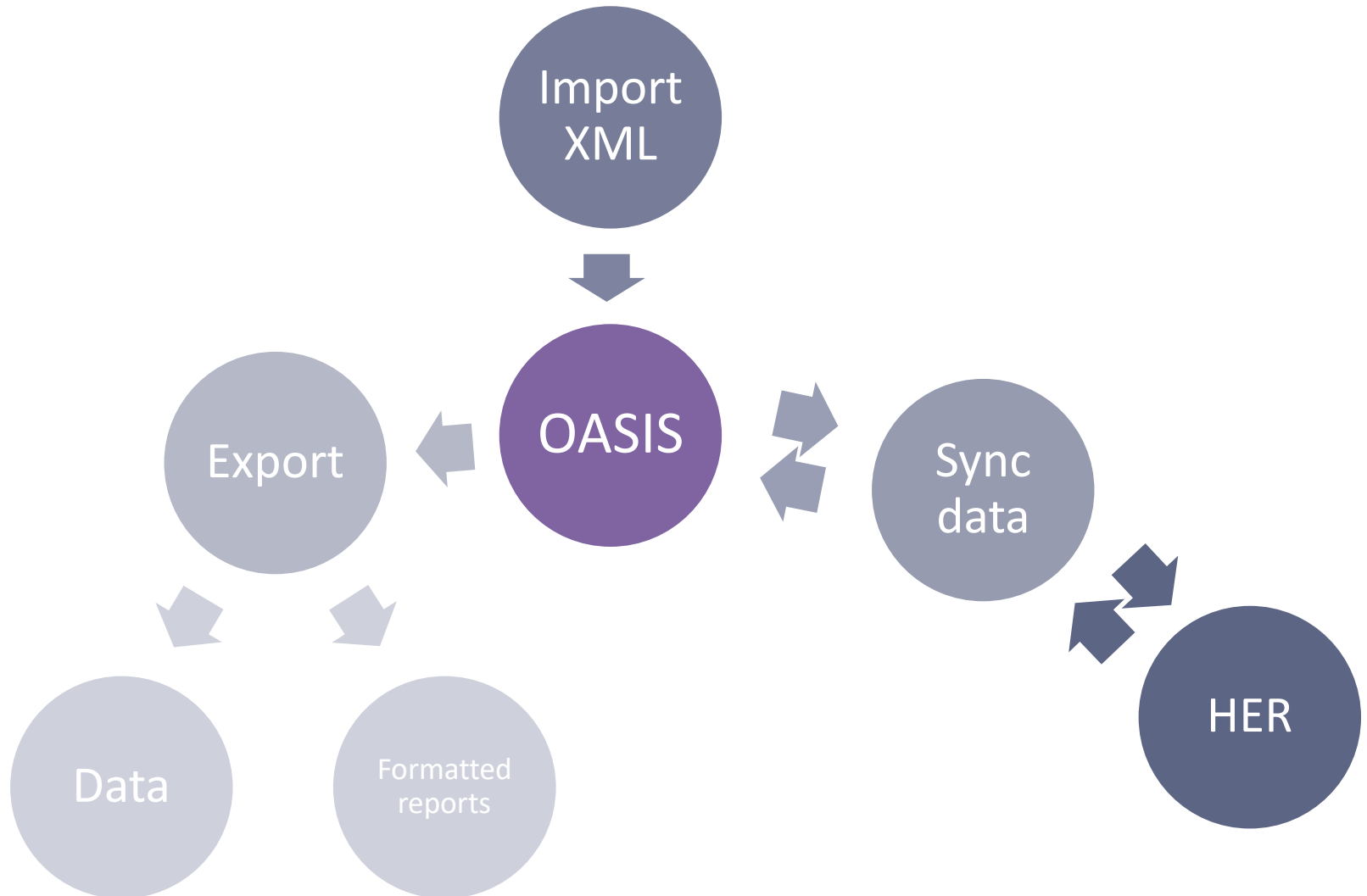
**Research outcomes**

Back

Next page

© Archaeology Data Service 2016. Funded by Historic England

# Import, export and synchronisation



# Archive section and museums

ads ARCHAEOLOGY DATA SERVICE

A browser

← → ↻ <https://oasis.ac.uk/oasisbuildings>

## OASIS+ buildings

1 Anne Towers, Towers Conservation ▼

Search...

LIST OF PROJECTS **NEW PROJECT** RECENT ACTIVITY YOUR PROFILE SEARCH

Project Summary

Event type ☒

Location ☒

Project details ☒

Associated ids ☒

Report upload ☒

Keywords ☒

Research outcomes ☒

Project creators ☒

Archive details ☒

OASIS ID towers1-135790

### Archive: Durham County Record Office

**Archive Identifier** ?

Enter the archive number assigned by the archive

**Deposition date** ?

Date the archive is to be or has been deposited

**change/add archive**

Quantity ?	Contents ?	Other ?	Location before deposition ?
Boxes / Mbs ▼	Contents ▼	If other, please specify	Select from list ▼
Boxes / Mbs ▼	Contents ▼	If other, please specify	Select from list ▼
Boxes / Mbs ▼	Contents ▼	If other, please specify	Select from list ▼
Boxes / Mbs ▼	Contents ▼	If other, please specify	Select from list ▼

**Back** **Upload contents list** **Next page**

© Archaeology Data Service 2016. Funded by Historic England

# Four major changes within OASIS

Web mapping services  
(WMS) and monument  
concordance vs  
monument recording

The differences  
between OASIS LITE  
and OASIS STANDARD

Synchronising records  
between OASIS and  
HER

Reports uploaded to  
ADS Library in real time  
(in some cases)

## HERALD Stage 1 Report Recommendation No 2

### **Design of OASIS to include grey literature only options and backlog upload options.**

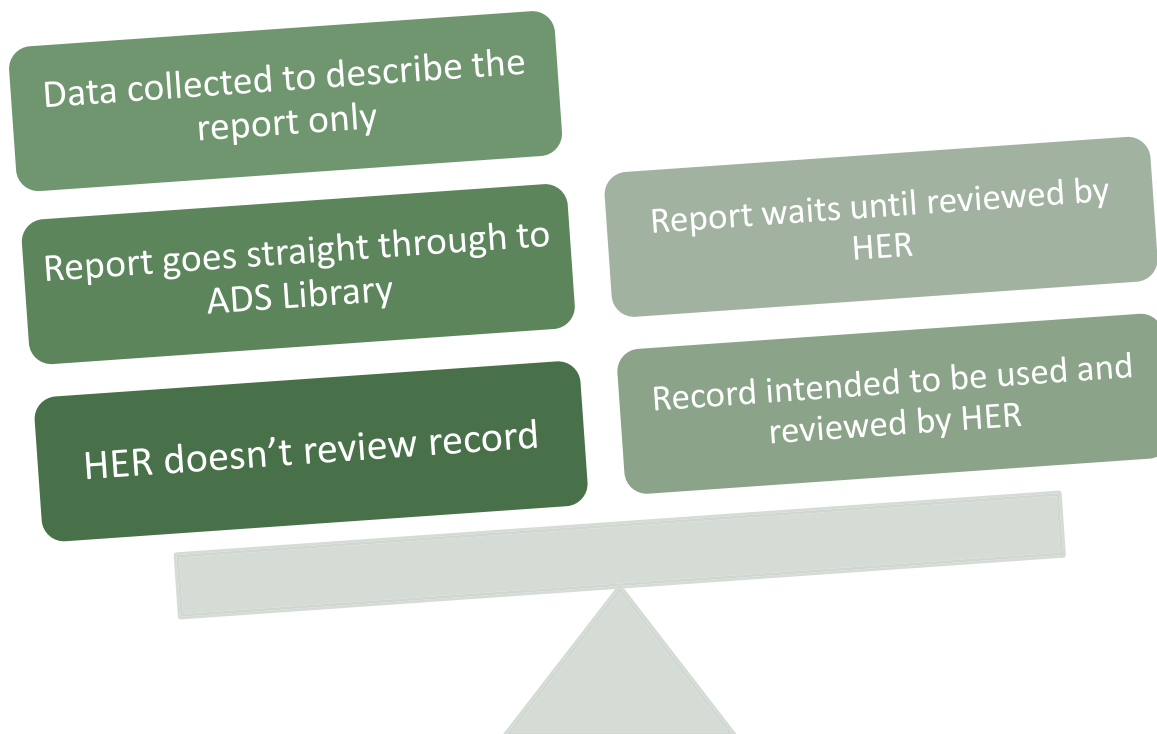
*The OASIS survey responses support the development of different levels of interaction with OASIS by contractors and HERs. To this end, a mechanism that allows OASIS to collect enough data to accompany a grey literature report, whilst not duplicating the whole HER event record, would be welcomed for situations where the HER does not want to participate in OASIS but the contractor would like their report to be archived and online.*

# OASIS LITE

Enhanced Bibliographic record

# OASIS STANDARD

Full OASIS fields





# OASIS LITE

## Bibliographic record

What

Where

When

Associated  
identifiers

project  
name  
description  
event type

monument  
artefact  
ecofact

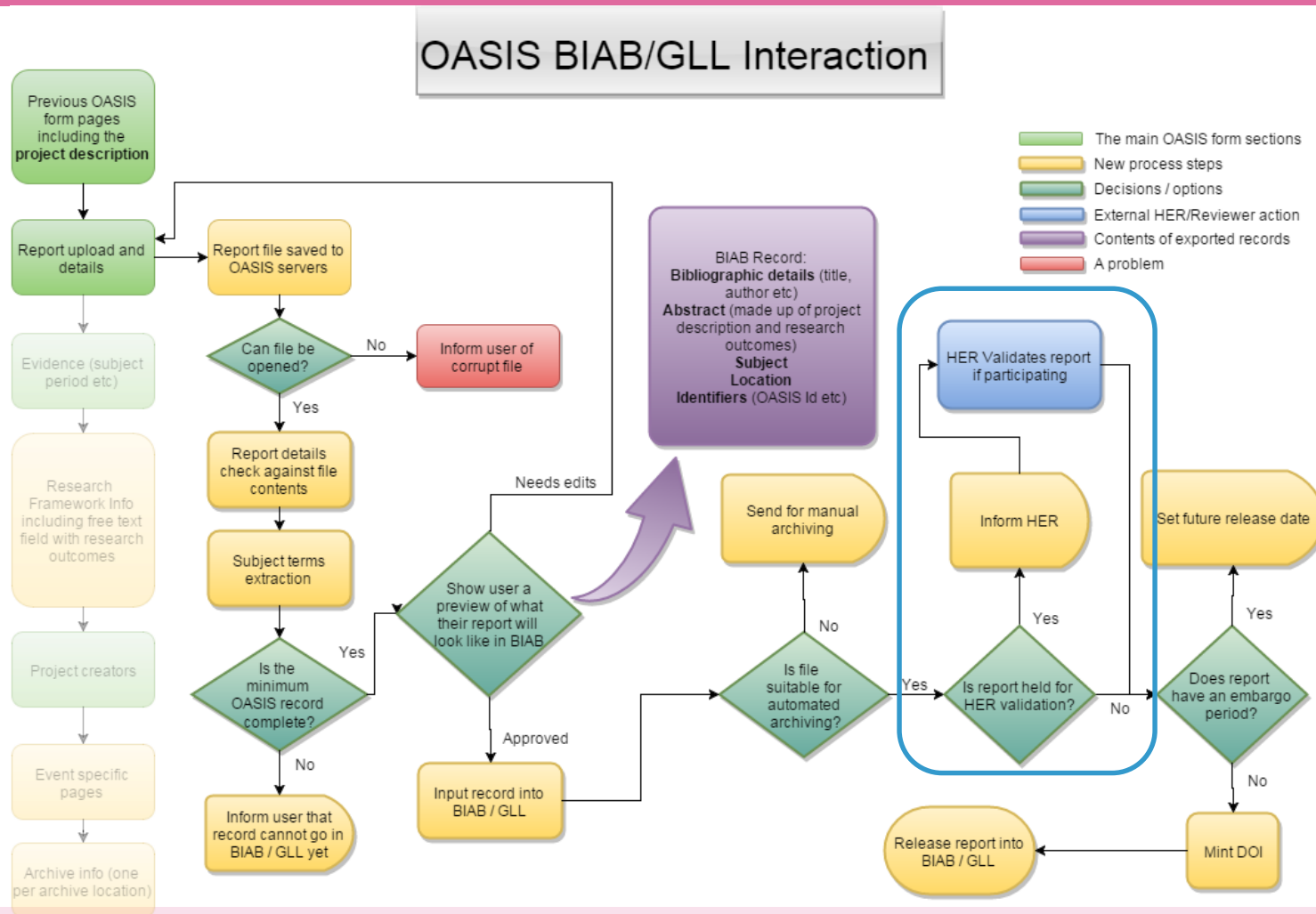
grid  
reference  
CDP

period

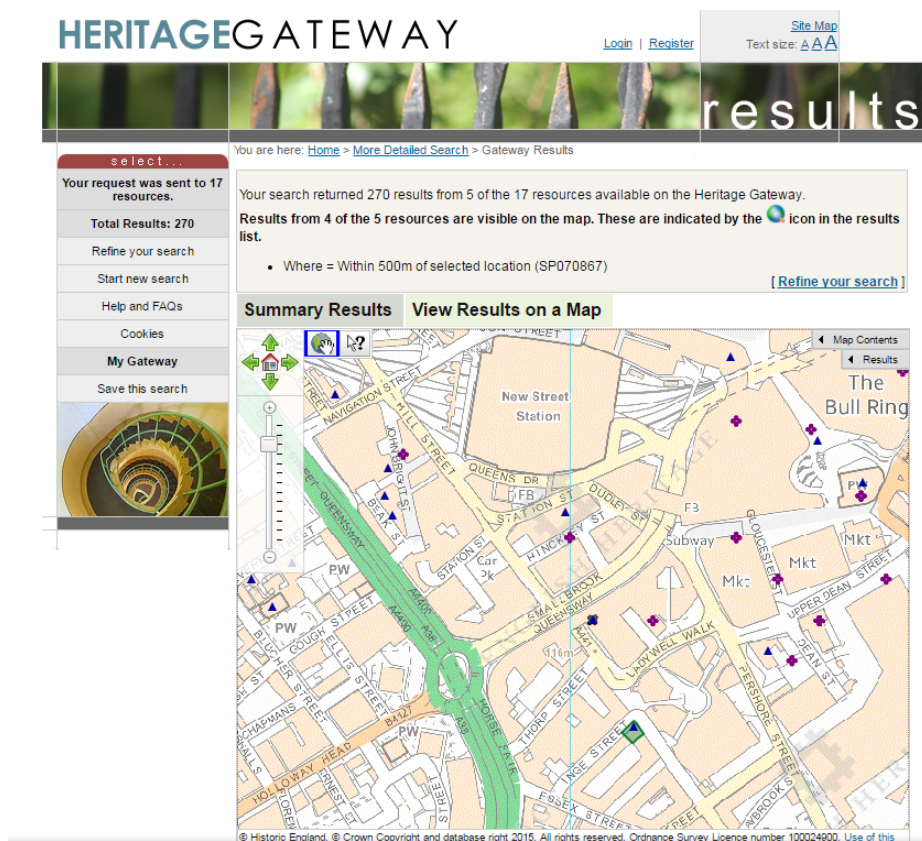
HER no.  
site code  
etc

museum  
accession  
no.

# Report Upload



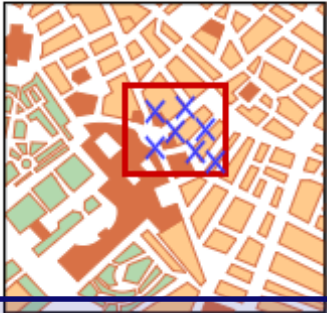
# Web mapping services



HERs on the Heritage Gateway have a WMS which could be reused by OASIS to provide monument concordance for projects

# Monument concordance / reporting

Site information



**Site Name**

Monuments listed below are from the Blankshire HER, please select and comment on any which are relevant to your project. Please add any additional monuments located at the bottom of the list.

Monument description	Monument Id	Comments
<input checked="" type="checkbox"/> Ditch, Medieval	VBFI2365495	<input type="text"/>
<input type="checkbox"/> Building, Medieval	VBFI2365412	<input type="text"/>
<input checked="" type="checkbox"/> Pit, Medieval	VBFI2365457	<input type="text"/>

3

- Monument reporting
- Numerous fields

2

- Enhanced concordance
- Monument ids and user comments

1

- Just concordance
- Monument ids

# HERALD Survey results

Do you think that OASIS should record monument identifier information in event records?

HER

Users:

45% YES (30)

55% NO (36)

HER

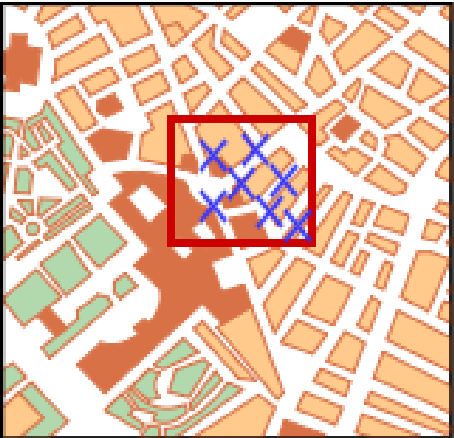
Non users:

29% YES (7)

71% NO (17)

# Project boundaries

Site information



**Site Name**

Monuments listed below are from the Blankshire HER, please select and comment on any which are relevant to your project. Please add any additional monuments located at the bottom of the list.

Uploaded boundary file vs boundary drawn on screen.

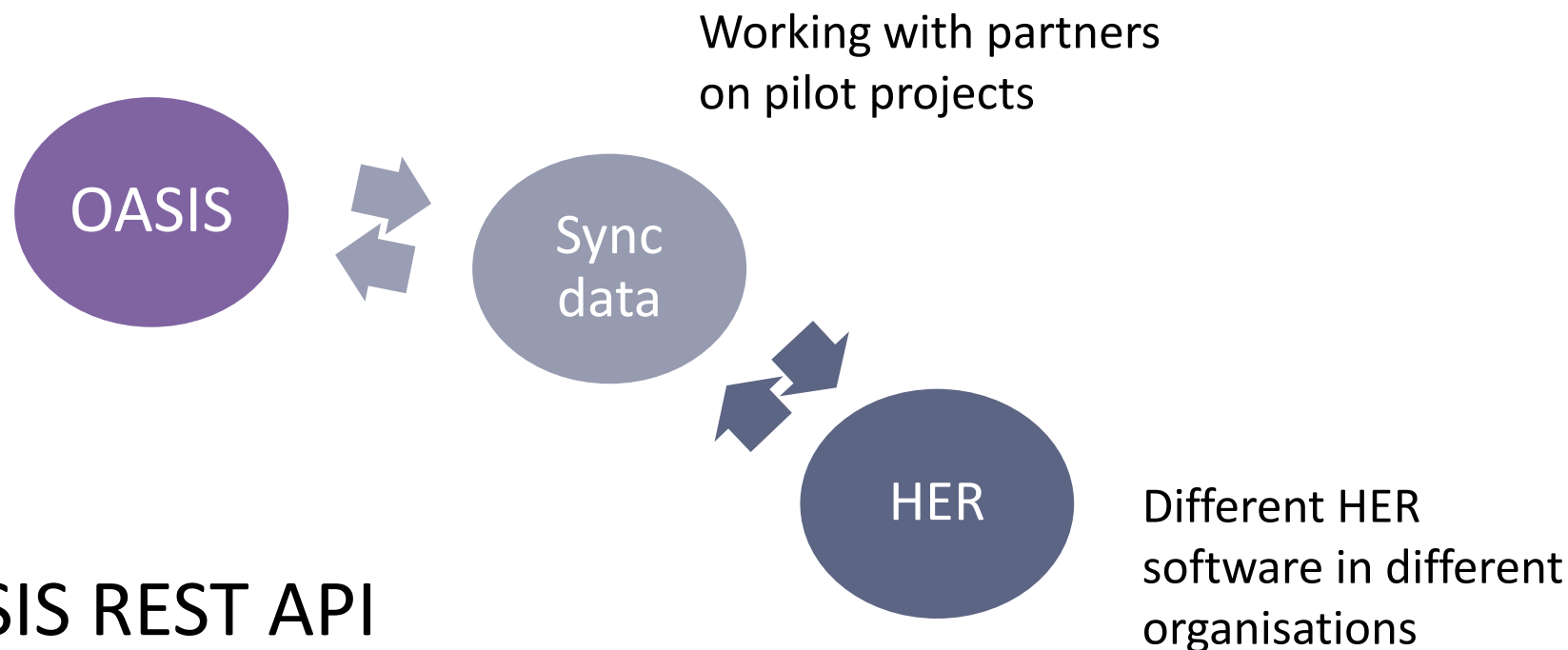
Is an approximate boundary better than none?

# HERALD Stage 1 Report Recommendation No 3

## **Importance of import / export / synchronisation functions.**

*HERs need to be able to transfer data automatically between the HER and OASIS. This would allow for HERs to contribute to, or benefit from, the data in OASIS at a point in the workflow that fits with them...*

# Synchronisation between OASIS & HERs



## OASIS REST API

- Allows pulling of records out of OASIS
- Allows updating of records in OASIS
- Allows the start of new records in OASIS



# Timescales



# The rest of the day

- Questions and discussions on the general changes to OASIS

Followed by:

- Directed discussions on Syncing and reuse of Web Mapping Services (WMS)

# Keeping up to date with OASIS

OASIS form and FAQs and documents are on the OASIS web site:

<http://oasis.ac.uk>

Subscribe to the OASIS Blog:

<http://archaeologydataservice.ac.uk/blog/oasis>

Contact OASIS:

[oasis@ads.ac.uk](mailto:oasis@ads.ac.uk)